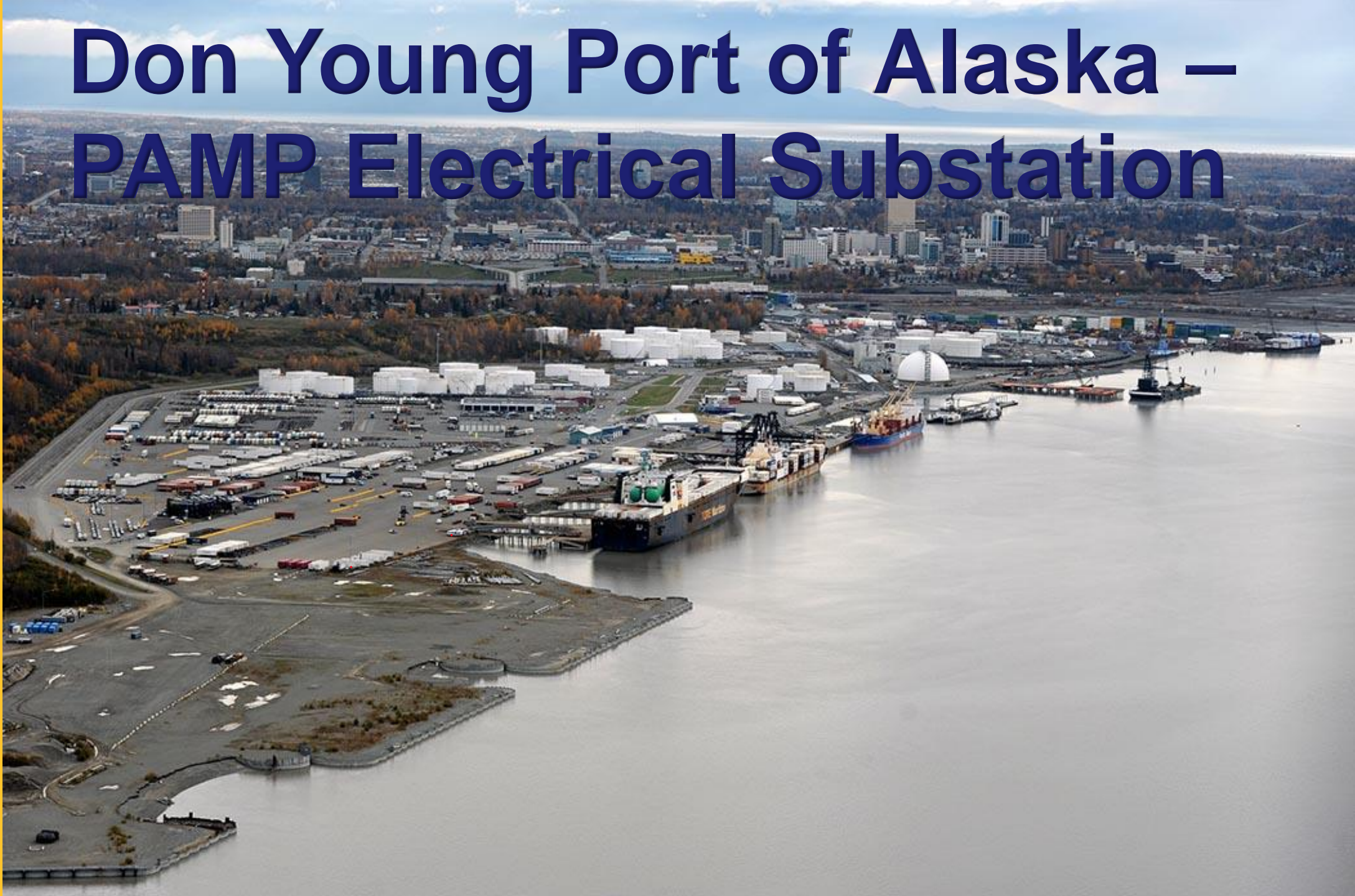


# Don Young Port of Alaska – PAMP Electrical Substation

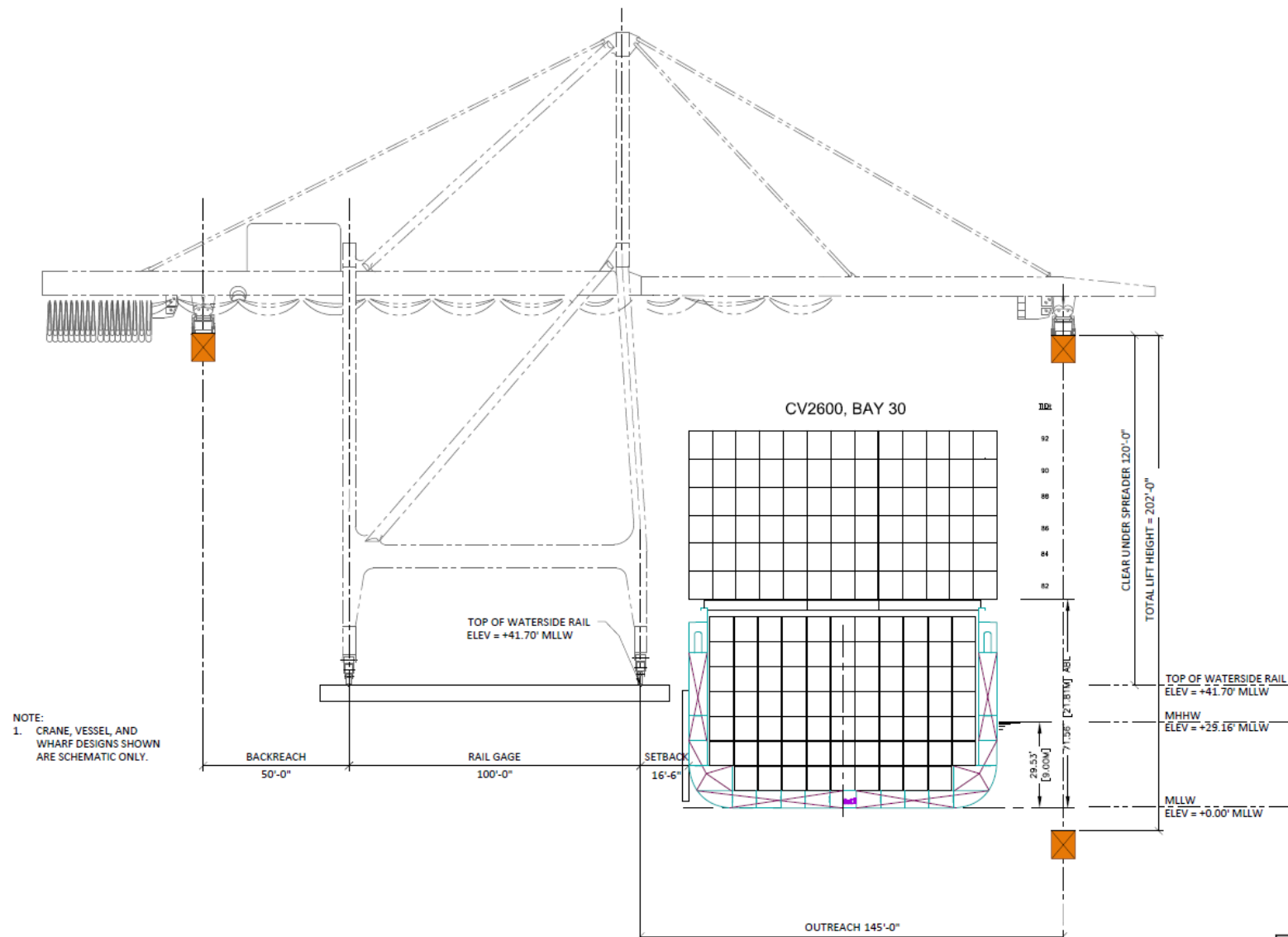


# Overview

- The Terminal 1 replacement project will include three (3) new ship to shore cranes. These require significant electrical power.
- The substation was broken out as a standalone design build project.
- Three qualified proposals were received.
- All three were within the engineer's estimate of \$30 million.
- Fully funded with State of Alaska matching grant
- Currently under negotiations



# New Ship to Shore Crane Sketch



# Major Elements

- Two 34.5 KV – 12.47 KV transformers
- A 2.5 MW generator with transformer and load bank
- A substation control building
- Underground conduit
- Coordination with Chugach Electric

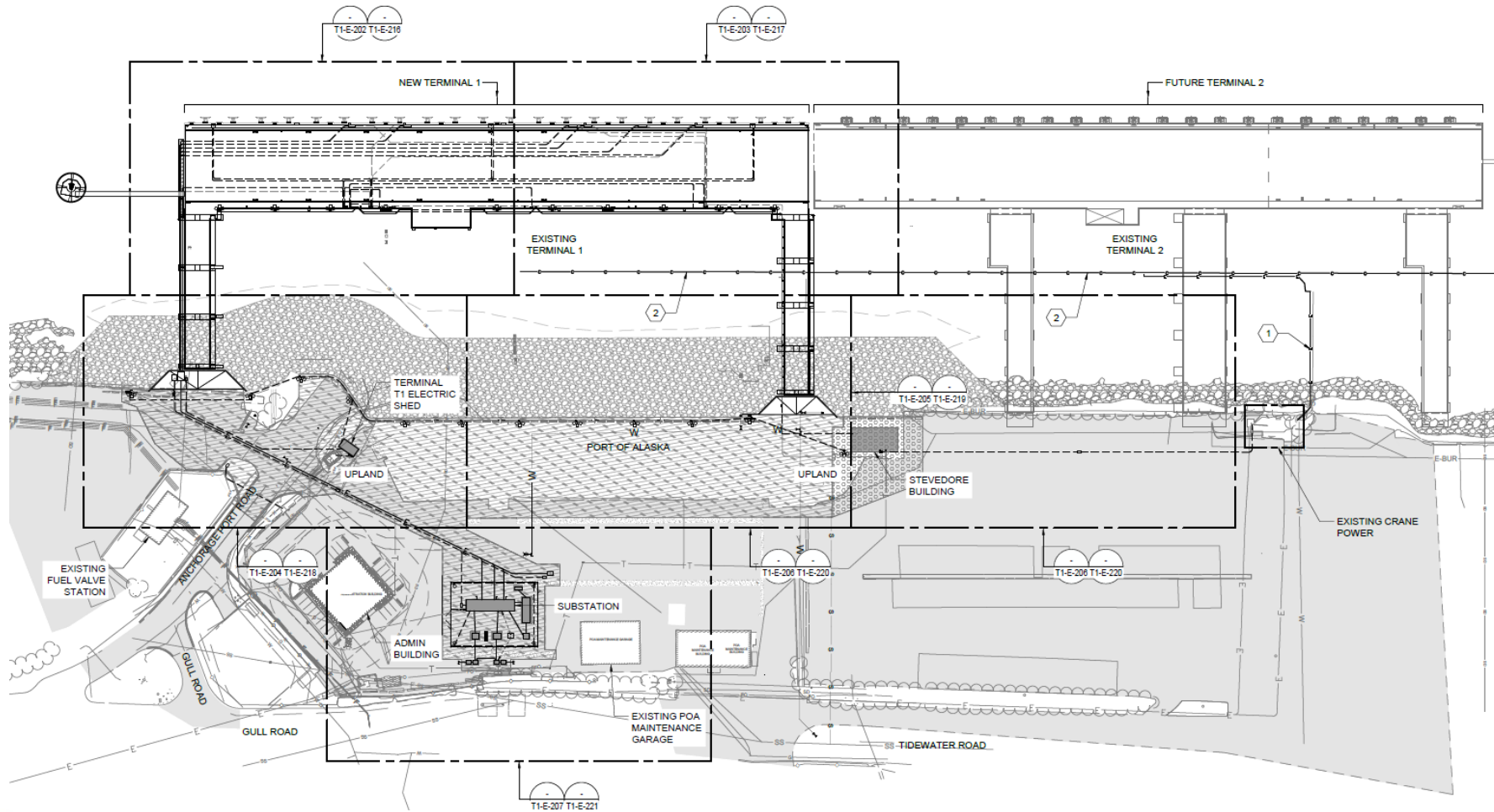


# Site Study

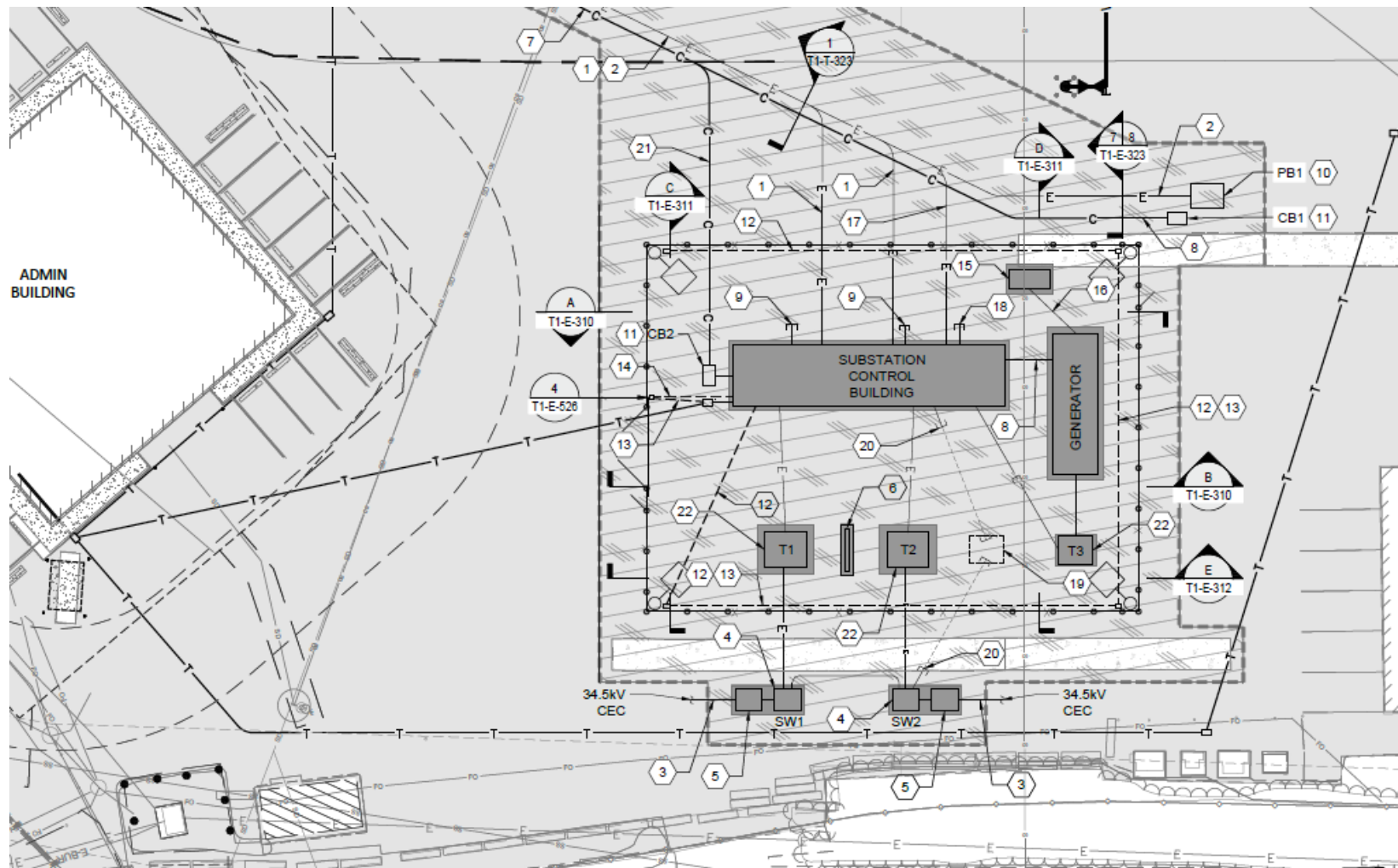
- The base project is located adjacent to the new Port Admin Building.
- The project includes a study to locate the facility at the north extension



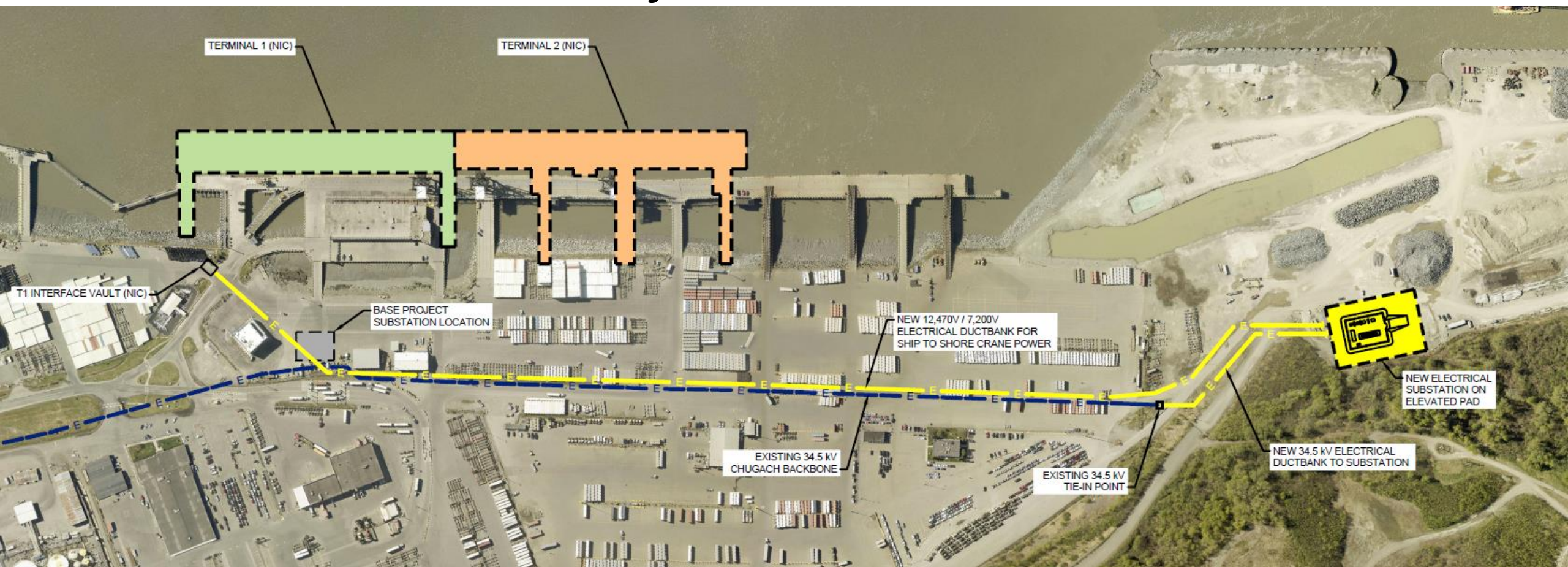
# Base Project Site



# Base Project Site



# North Extension Project Site



# Schedule

- June 10, 2025 Assembly Approval - Award & Limited Notice to Proceed (Design & Long Lead Procurements)
- Fall 2025 Alternative Location Site Study Complete
- Fall 2025 Long Lead Items Procured
- Spring 2026 Design Development through IFC Complete
- Spring 2026 Construction NTP
- 2026 Substation site and equipment pad construction
- 2027 Phase one electrical construction.
- 2028 Phase two electrical construction and commissioning
- July 1st, 2028, Substantial Completion
- August 2028 cranes arrive.

