



Homelessness and Health Metrics Dashboard *Draft* *How did we do in 2025?* *What's next for 2026?*

January 21, 2026

Thea Agnew Bemben, Special Assistant, Homelessness and Health, Community Safety

What success looks like

Safe community for everyone who lives, works and visits here.

- Fewer people sleeping outside
- Year-round safety net system
- More crisis care
- More housing
- Partnerships, funding, and data

We need **clear pathways from crisis to safety** for individuals experiencing homelessness.

Mayor Suzanne LaFrance

JANUARY 31, 2025

HOMELESSNESS AND HEALTH STRATEGY

The LaFrance Administration is committed to a comprehensive and coordinated strategy to address homelessness and related health and public safety issues.

With a public health approach that focuses on harm reduction and prevention, we can improve the health and safety of our entire community, including those experiencing homelessness, with immediate action and long-term solutions.

Our response is driven by our focus on public safety. People sleeping outside need safe alternatives. We need enforcement of laws that keep our community safe. Since July, we have abated 15 camps that pose a public safety risk. We've stood up over 530 beds of shelter across four sites this winter and opened warming centers in mid-December as another layer of safety. We are looking ahead to spring to increase housing options so fewer people return to sleeping outside.

By balancing abatement and enforcement with shelter and services, we are doing the work to create a visible reduction in unsheltered homelessness in our community.

GOALS



1. Significantly reduce unsheltered homelessness through low-barrier shelter and connections to housing.



2. Increase access to behavioral and physical health services.



3. Add new housing and increase access to existing housing.



4. Harness community partnerships, funding, and data to reduce systemic contributors to homelessness.

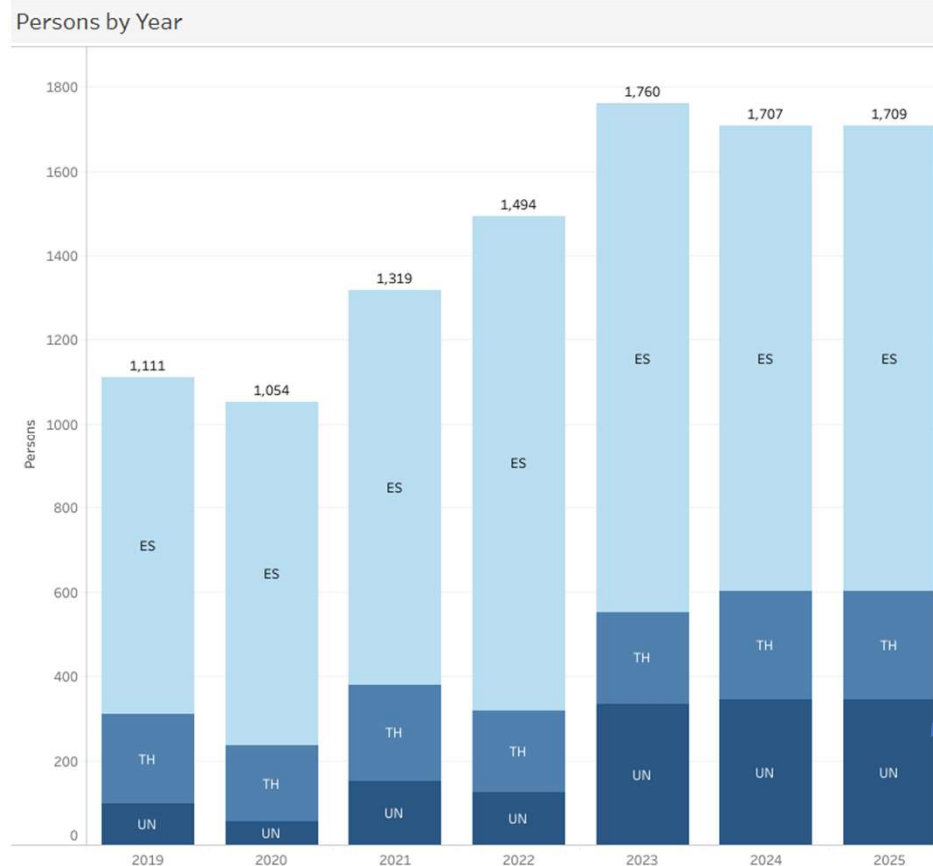
RESULTS

In three years, we will see:

- Fewer people camping
- More people in housing and connected to health services and supports
- Adequate year-round shelter
- Legal parking for vehicles and RVs
- Fewer outdoor deaths
- Innovative pilot projects, including use of modular structures for transitional living

How many people are unhoused and/or in crisis?

Point in Time Count, 2019-2025

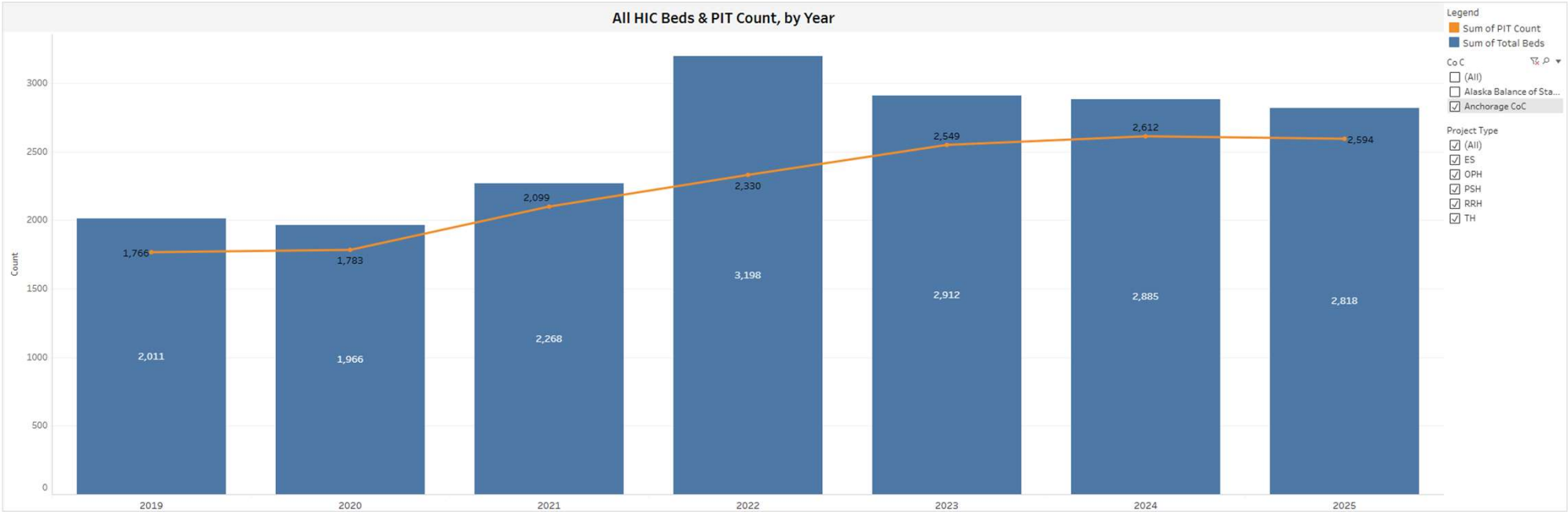


Fewer people sleeping outside means reducing this number in 2026

**PIT Count happens
January 26-29,
2026!**

How many people are unhoused and/or in crisis?

Annual Housing Inventory and PIT Count, 2019-2025



How many people are unhoused and/or in crisis?

Administration of Narcan + Transports, 2025

Transports 2025

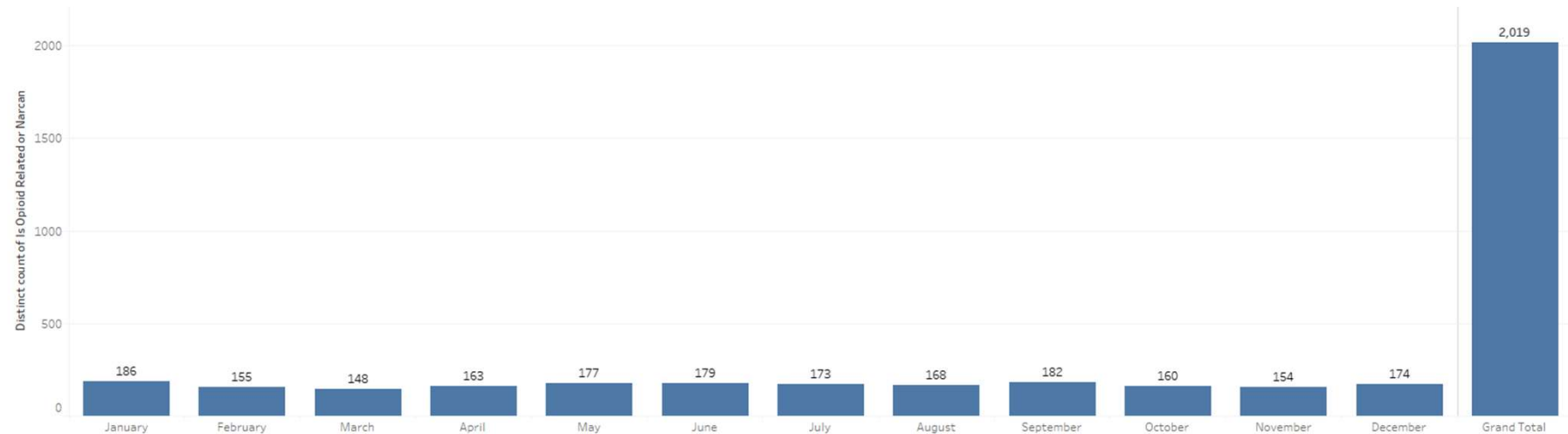
Incidents counted if:

AFD or Public Narcan administered

Primary or Secondary Impression contains opioid or overdose

Patient Alcohol Drug Use Indicators contains drug paraphernalia at scene or admits to drug use

Situation Possible Overdose is yes



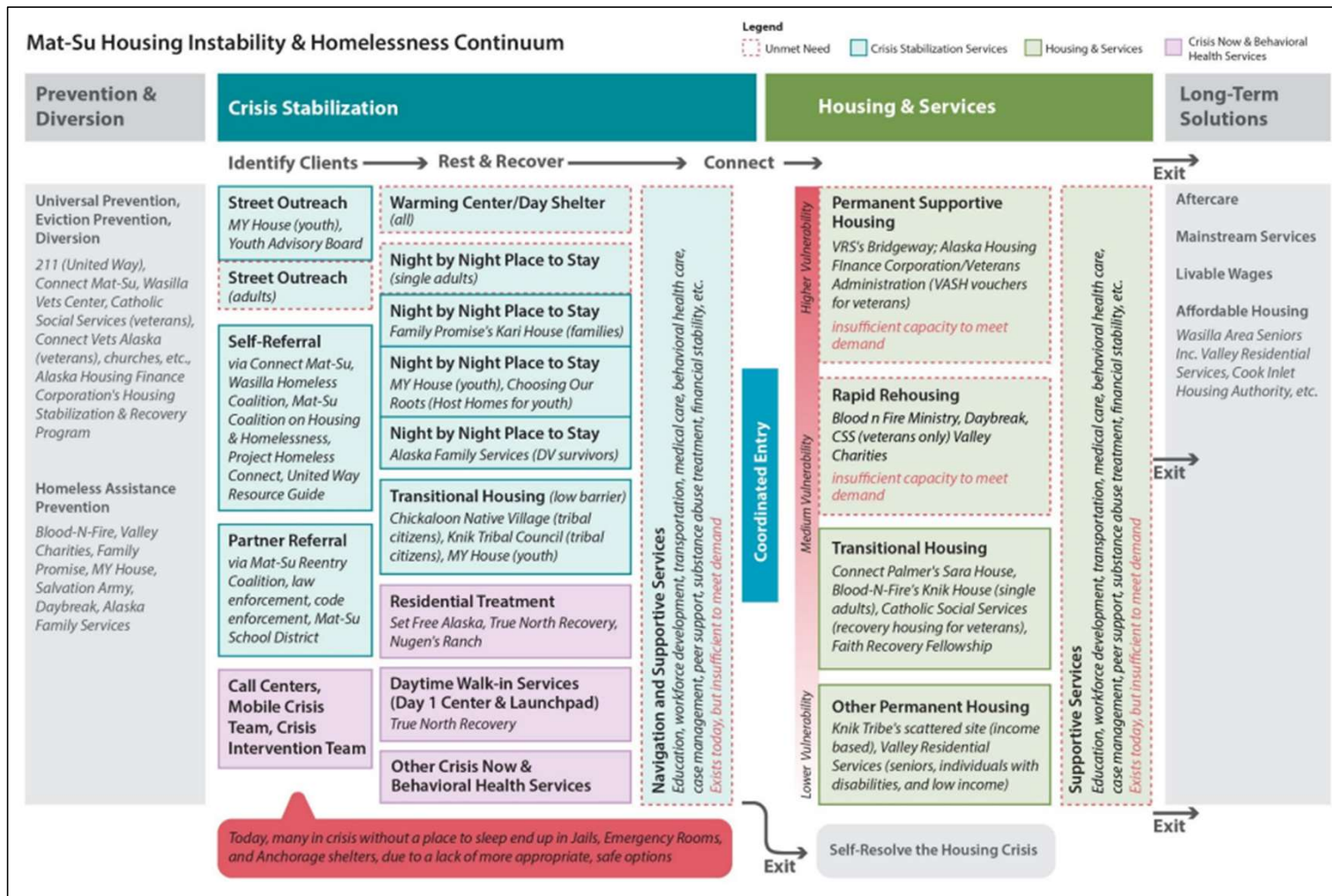
AFD added two questions to help identify opioid-related incidents and Narcan administration in 2025.

AHD distributed 1,034 Narcan kits at community locations in 2025.

How are we addressing this?



Many Points of Intervention



Example from Mat-Su mapping their continuum:

- Prevention
- Diversion
- Outreach
- Crisis Response
- Treatment
- Shelter
- Housing
- Long-term Solutions

Are we preventing people from becoming homeless?

- **544** households helped by the ADRC and community partners to prevent homelessness
- **717** people helped by AHD through the ERA-2 funds to get into housing or prevent homelessness
- **366** of the 1,397 people (26%) who had been housed in the past two years returned to homelessness
- **2,401** people came to shelter or transitional housing for the first time

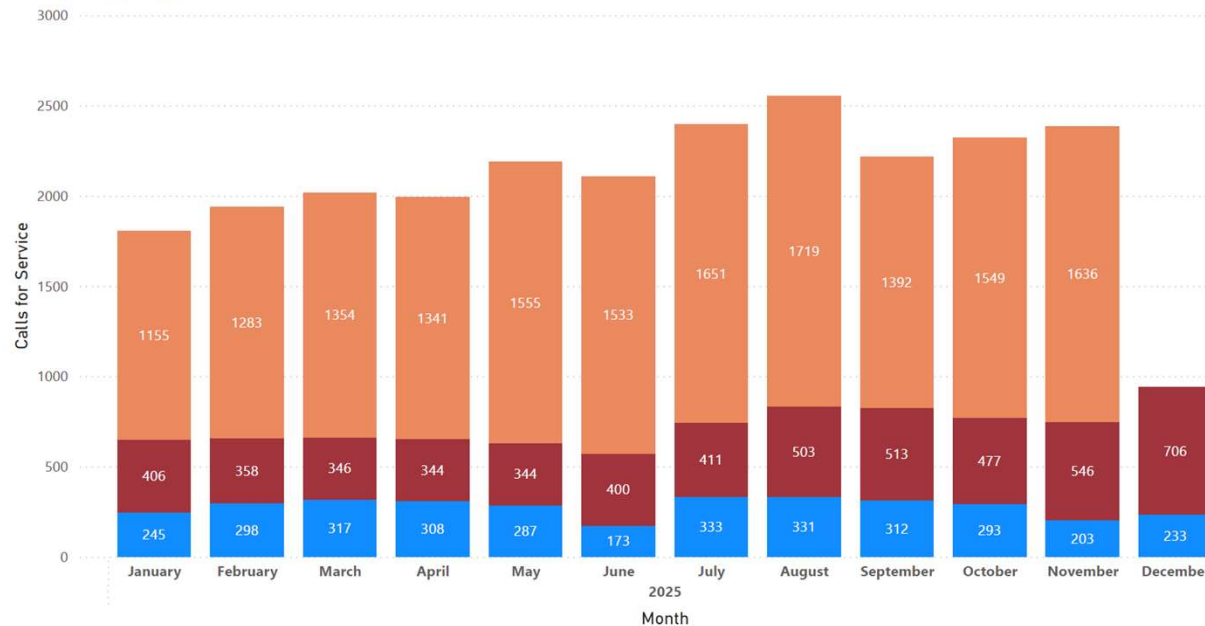
Are we reaching people in crisis, in camps, and on the street?

Mobile Teams Calls for Service

Definition: Total number of mobile team responses during the time period. May include in person, telephonic, and outreach contacts.

Number of Calls for Service Per Month

team ● MIT ● MCT ● ASP



SOMEONE TO RESPOND

Total Requests YTD

24,855

Total MIT Calls YTD

3,333

Total MCT Calls YTD

5,354

Total ASP Calls YTD

16,168

HOPE team
had **3,176**
contacts.

AHD Clinical
team had
10,762
contacts.

RRS had **1,947**
contacts.

Are we reaching people in crisis, in camps, and on the street?

Mobile Teams Annual Unique Individuals

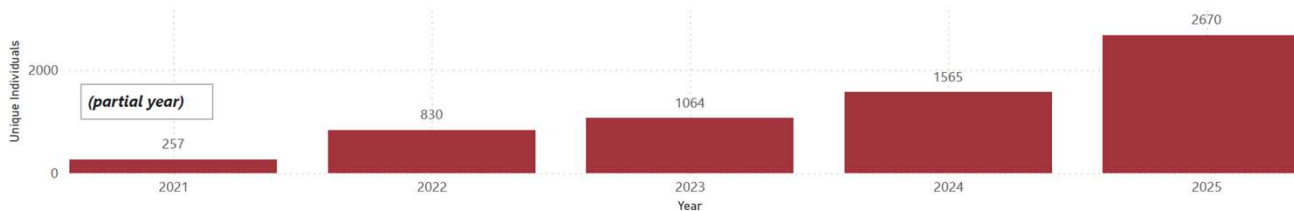
Definition: The total count of known unique individuals receiving mobile crisis services from the first to the last day of the reporting month *as of November, 2025*



SOMEONE TO RESPOND

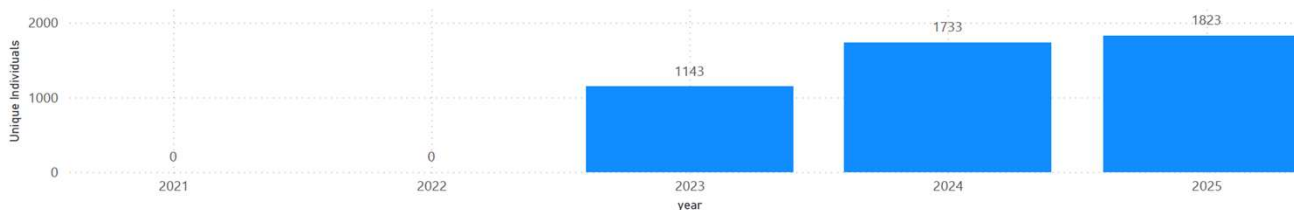
AFD MCT

Unique Individuals Per Year



APD MIT

Unique Individuals Per Year



AHD Clinical team served **736** people in camp outreach.

Community outreach served **615** clients.

RRS served **905** clients.

Are we reaching people in camps and on the street?

Mobile Teams Housing Status

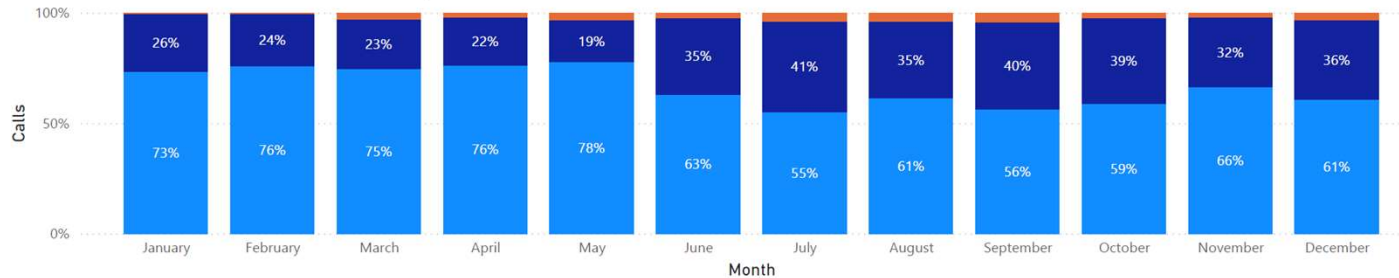
Definition: Counts of self-reported housing status from unique individuals receiving mobile crisis services. Housing status can be unstable, and reporting counts are anticipated to change within communities.



SOMEONE TO RESPOND

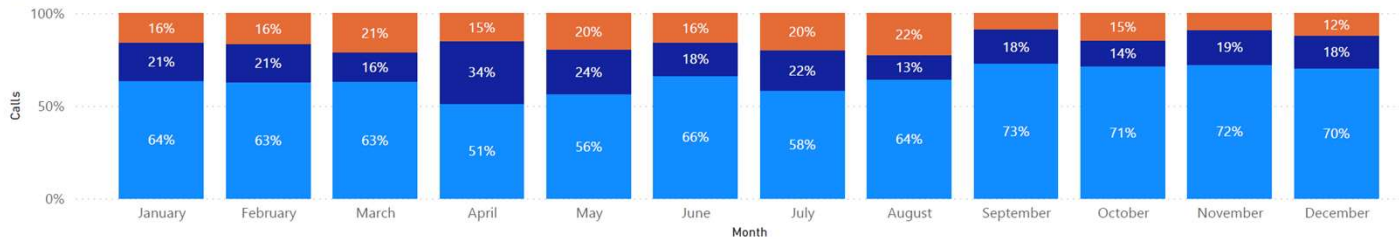
MCT Housing Status

● # Housed ● # Unhoused ● # Unknown / Not reported



MIT Housing Status

● # Housed ● # Unhoused ● # Unknown / Not reported

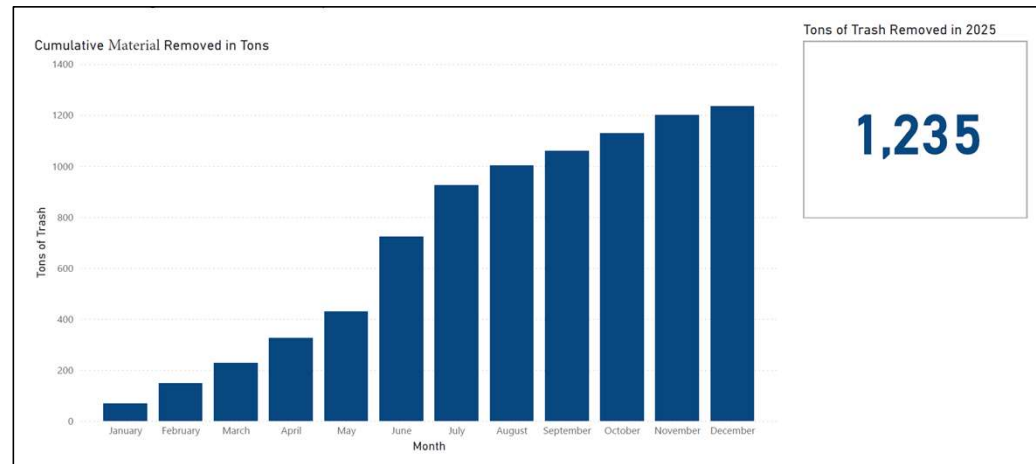
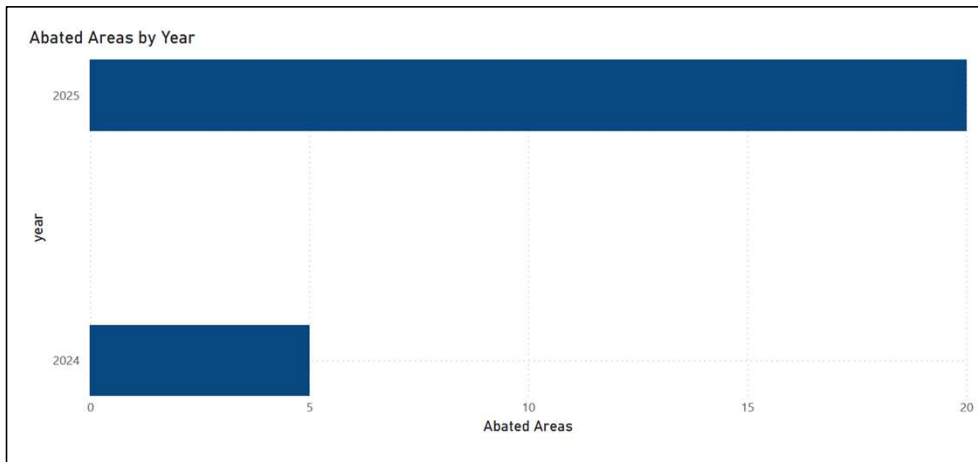


31% (827) of MCT's clients, and **20% (365)** of MIT's clients are unhoused.

Are we immediately connecting people in camps or on the street with shelter, treatment, and housing?

- HOPE team helped **154** individuals enter shelter or housing, and **31** enter treatment
- Community outreach helped **142** individuals enter shelter or housing
- Good Neighbor Fund pilot project helped **61** people enter shelter or housing

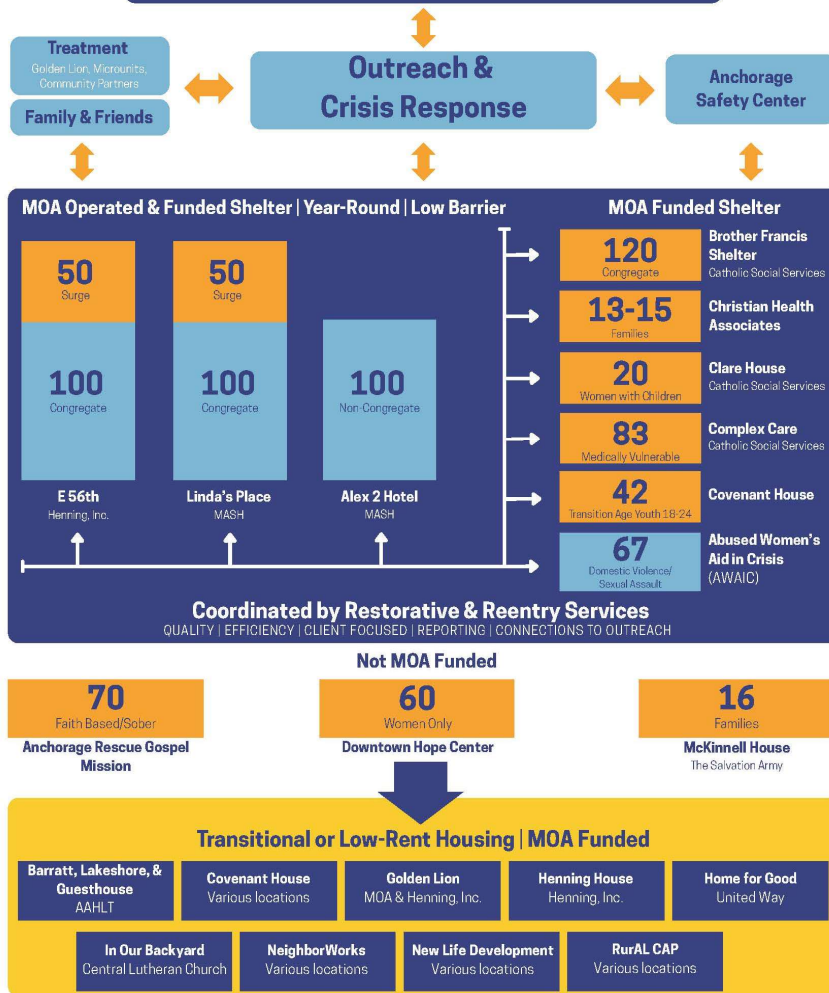
Are we removing camps and making parks and public spaces safe?





MOA Safety Net Shelter & Crisis System

People Experiencing Homelessness



Are we providing shelter and spaces to connect with resources?

Are we providing shelter and connections to resources?

Number of people served in MOA-operated and –funded Shelters

Provider	Client Count
Henning Inc. - 56th Congregate Shelter [ES](1259)	730
zz - 2025.08.31 - Catholic Social Services - East 56th Shelter [ES](1219)	1,186
Total	1,536

Clients Active in Period v2023.11.13

Summary

Report Dates: 1/1/2025 - 12/31/2025

Provider	Client Count
Catholic Social Services - Brother Francis Shelter [ES](107)	687
Catholic Social Services - Complex Care Shelter [ES](1097)	240
Christian Health Associates - Family ECWS Hotel [ES](1212)	282
Christian Health Associates - Family Emergency Cold Weather Shelter [ES](1113)	140
Henning Inc. - 56th Congregate Shelter [ES](1259)	730
MASH Property Management - Alex Hotel Building 2 Shelter [ES](1249)	509
MASH Property Management - Linda's Place [ES](1258)	450
zz - 2025.05.15 - Henning Inc. - Alex Hotel [ES](1220)	430
zz - 2025.08.31 - Catholic Social Services - East 56th Shelter [ES](1219)	1,186
Total	2,962

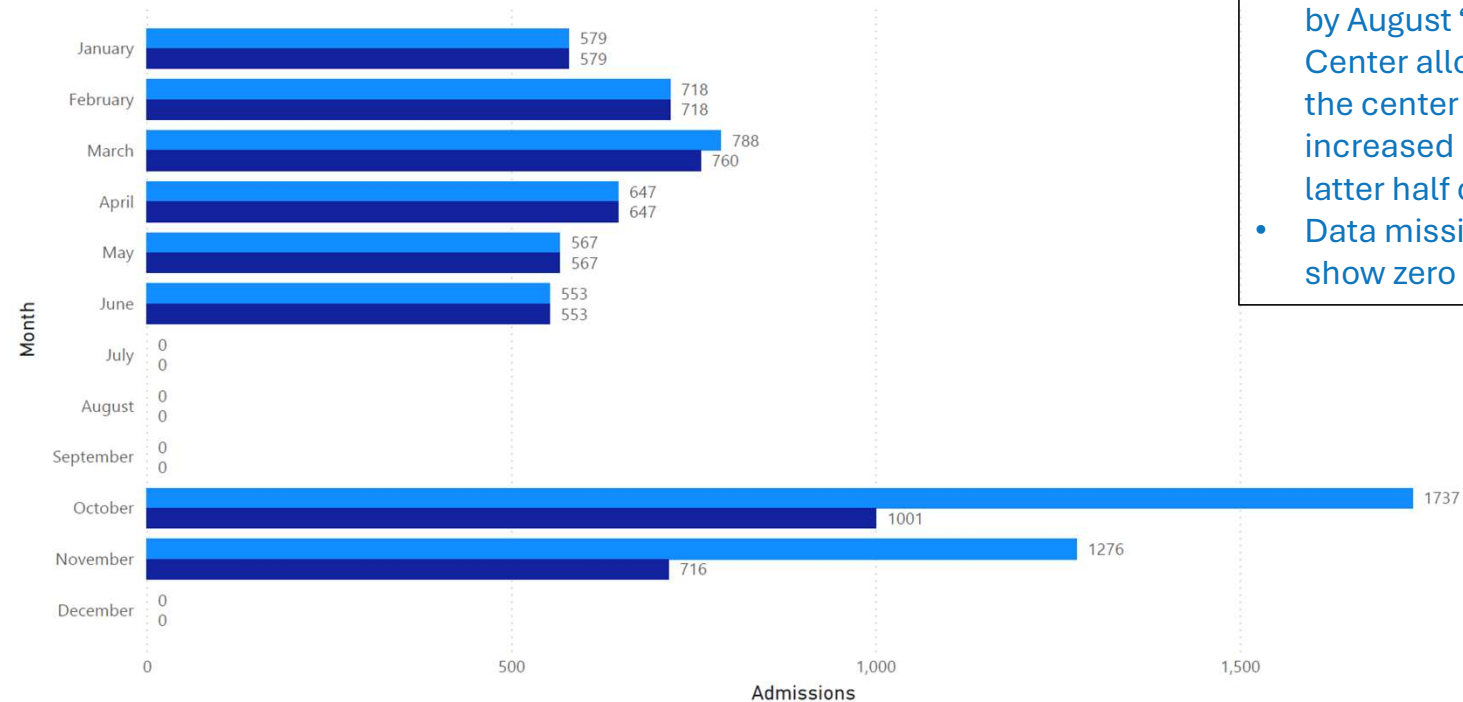
- **2,962** unique clients were served in MOA-operated and -funded emergency shelters
- E. 56th served **1,536** unique clients, or **52%** of all emergency shelter clients in those sites
- Individuals had a median length of shelter stay between **9 and 28 days**; families, between **36 and 47 days**
- Shelters serving individuals **were 97% occupied**; those serving families were **69% occupied**
- Turnaways from shelter will be systematically tracked in 2026; in 2025, in-person turnaways ranged from **0-10 people per day**; people move into shelter beds as available, usually within a few days
- Current system struggles to serve people who have behaviors that pose safety risks for themselves and others when in shelter

Are we providing shelter and connections to resources?

Number of total admissions at the Anchorage Safety Center by involuntary status

Safety Center Total Admissions

metric ● # Admissions / Intakes ● # Involuntary



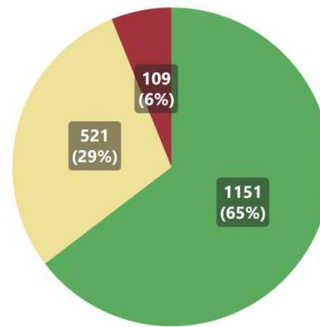
- Policy change fully implemented by August '25 at Anchorage Safety Center allows individuals to use the center voluntarily. This increased admissions during the latter half of 2025
- Data missing for months that show zero admissions

Are we providing shelter and connections to resources?

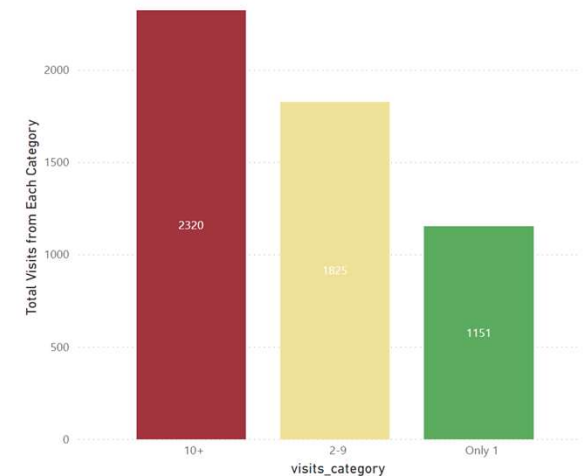
Number of clients at the Anchorage Safety Center and frequency of visits

- Average number of clients per day in January was **8**; in November it doubled to **16**
- **65%** of Safety Center clients had 1 visit; **29%** had between 2-9 visits; **6%** had over 10 visits
- **109 individuals** accounted for 2,320 visits, an average of 21 visits per individual

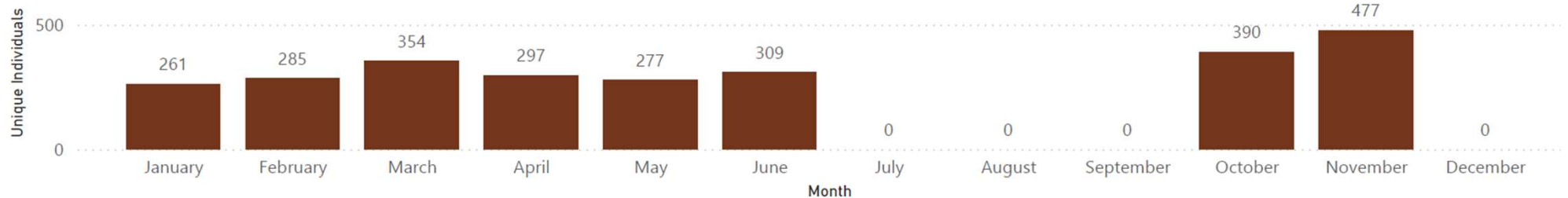
Clients Per ASC Utilization Category
visits_category ● Only 1 ● 2-9 ● 10+



ASC Visits by Client's Utilization Category
visits_category ● 10+ ● 2-9 ● Only 1



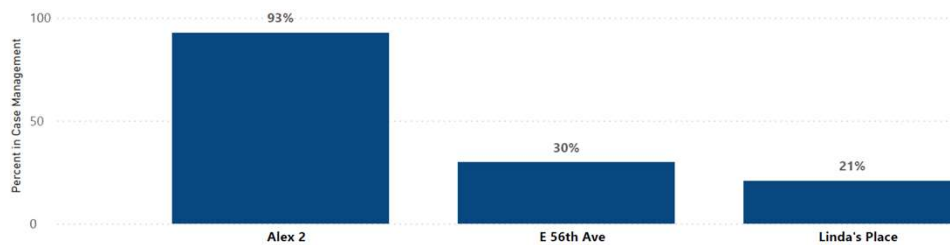
Safety Center Unique Clients



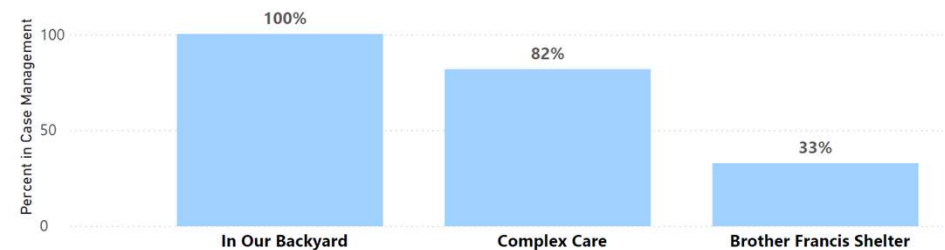
Are we providing shelter and connections to resources?

Percent of clients engaged in case management (Q4 only), with disabling conditions, and exits from shelter

Percent Case Management in MOA Funded and Operated Shelters



Percent Case Management in MOA Funded Transitional Housing and Shelters



Where did people go from shelter?

- **42%** Unknown
- **21%** Permanent housing
- **17%** Unsheltered
- **9%** Transitional: friends/family, hotel, etc.
- **8%** Emergency shelter
- **3%** Institutional care: foster care, hospital, jail, long-term care, treatment, etc.

How many people using shelter have disabling conditions?

- **38%** None
- **52%** One or more disabling conditions
 - **22%** 3+ disabling conditions
- **10%** Unknown

Are we making the pie bigger?

Who is helping address homelessness in Anchorage?

- Good Neighbor Fund

- Established at Alaska Community Foundation
- Steering Committee formed, MOA directors ex officio
- **242** donors since October 1, 2025
- **\$148,607** contributed by community members



FOR ANCHORAGE, BY ANCHORAGE.

Are we making the pie bigger?

Who is helping address homelessness in Anchorage?

2026 Mayor's Community Safety Budget				
	GG	ATAX	Other	TOTAL
Outreach + Crisis Response: Safe Streets, Parks, Neighborhoods	\$ -	\$ 2,799,592	\$ 175,000	\$ 2,974,592
APD: HOPE Multi-Disp Outreach Team/3RNC		\$ 500,000		
APD: Program Operations		\$ 798,206		
Muni Attorney: Program Operations		\$ 292,195		
Parks: Healthy Spaces Team		\$ 859,191		
AHD: ACEH Outreach + Navigation		\$ 350,000		
AFD: MCT + CORE Team			\$ 175,000	
Prevent + Divert from Homelessness	\$ 165,000	\$ 2,248,699	\$ 167,000	\$ 2,580,699
AHD: Eviction Prevention, ADRC			\$ 167,000	
AHD: Child Abuse and Neglect Prevention		\$ 1,500,000		
AHD: DV/SA Core Services	\$ 165,000	\$ 675,000		
AHD: Program Operations		\$ 73,699		
Low-barrier, Emergency Shelter	\$ 9,067,458	\$ 10,104,488	\$ 363,440	\$ 19,535,386
AHD: Program Operations	\$ 370,589	\$ 721,008		
AHD: Shelter Transportation			\$ 213,440	
AHD: MOA-Operated Low-Barrier Shelter	\$ 8,696,869			
AHD: MOA-Funded Low-Barrier Shelter		\$ 9,383,480	\$ 150,000	
More Housing!	\$ -	\$ -	\$ 4,792,325	\$ 4,792,325
AHD: Low-Income Housing Development			\$ 1,450,000	
AHD: Housing exits from shelter			\$ 550,000	
AHD: Microunits for Recovery Residences			\$ 2,100,000	
AHD: Housing Rehabilitation Fund			\$ 692,325	
Data: Monitor and Share Results	\$ -	\$ -	\$ 100,729	\$ 100,729
AHD: HMIS Data System Support			\$ 100,729	
TOTAL	\$ 9,232,458	\$ 15,152,779	\$ 5,598,494	\$ 29,983,731

2026 Community Safety Budget: 80% MOA, 20% Other Sources

Goal 1: Fewer people sleeping outside

- Increase and coordinate outreach, crisis care, and diversion
 - HOPE AMDOT at Bean's and 3rd Avenue Resource + Navigation
- Maintain and improve safety net system
 - Preserve and improve shelter beds
 - Increase successful exits from shelter
 - Improve transportation
- Continue to rapidly address camping in public spaces

Goal 2: More crisis care

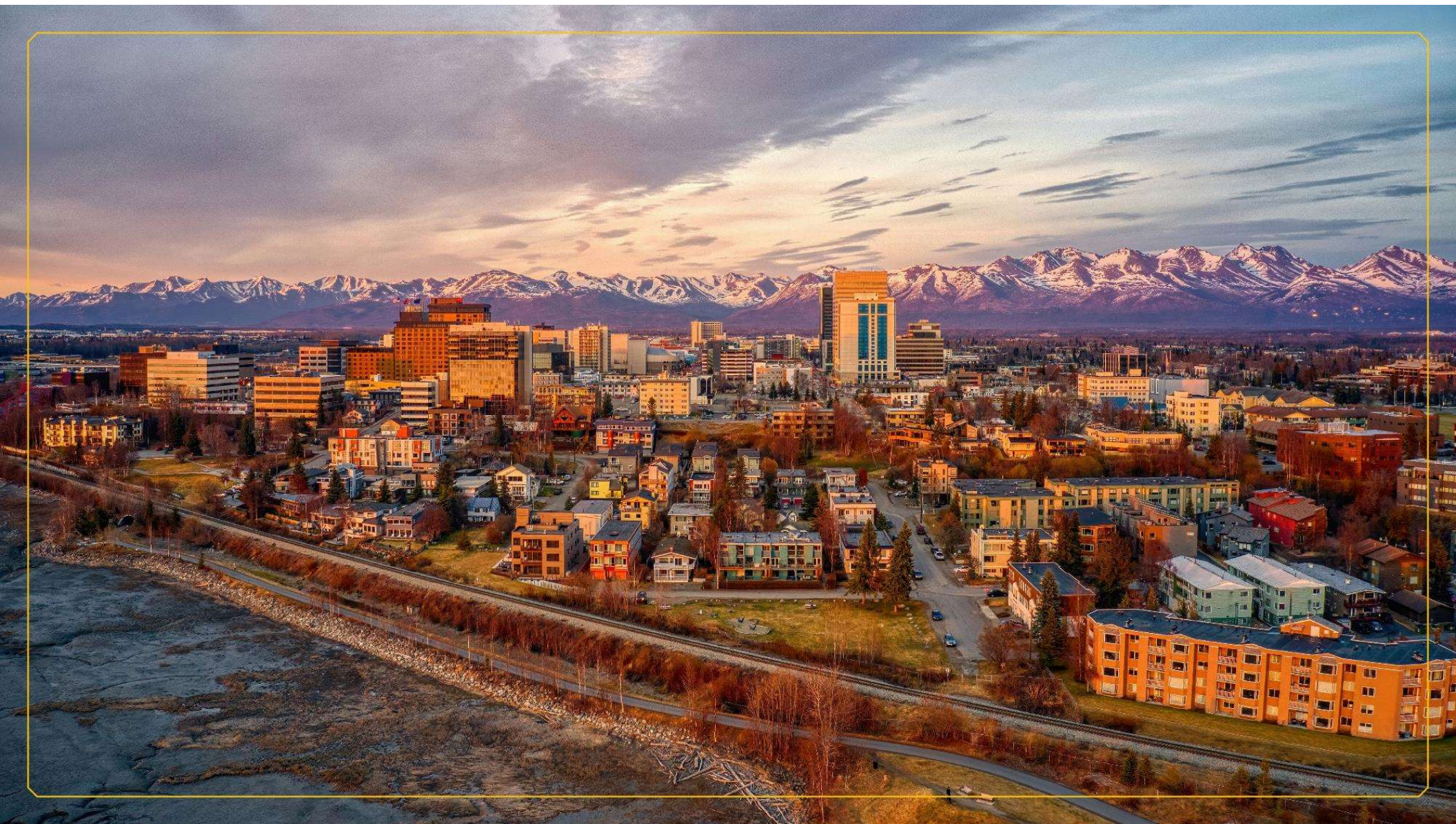
- Increase immediate access to healthcare and supports
 - AFD CORE and MCT expansion
 - Immediate access to MAT
 - APD Diversion to treatment and DV coordination
- Address people with complex care needs
 - Add Assisted Living beds appropriate to meet needs
 - Increase outpatient and residential beds for behavioral health treatment
 - Crisis Stabilization Centers opening in June and October
 - Improve the Safety Center as a Sobering Center
 - Launch interoperable electronic health records at MOA departments for care coordination, data, and towards billing

Goal 3: More housing

- Add and preserve transitional housing and other very-affordable housing
 - Add Microunits, Relocatable Dwelling Units, ADUs and Tiny Homes
 - Launch AHFC-MOA Voucher Program
 - Launch Housing Rehab Fund
 - Support CoC-funded housing and preserve and add units

Goal 4: More partnerships, data, and funding

- Grow Good Neighbor Fund
- Secure Rural Health Transformation funds
 - Technology leap! Care coordination, data reporting, shared intake and referral tool, real-time bed availability
- Secure private and State funds
- Preserve and guide federal funds





THANK YOU