

Anchorage Neighborhood Greenways Program 2026 Update

WAYFINDING



SHARROWS



 Neighborhood Greenways 

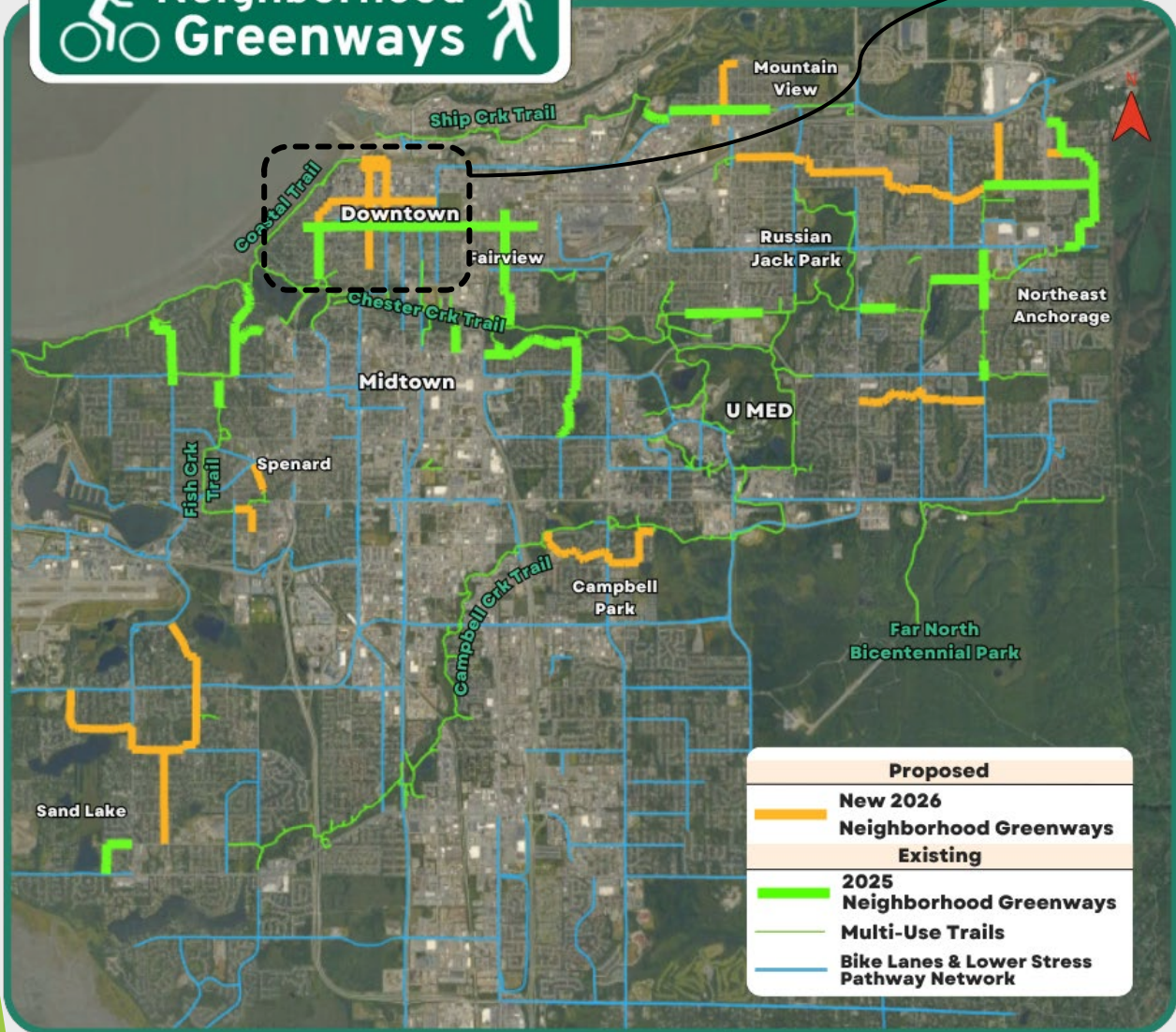


TRAFFIC CALMING



Anchorage

Neighborhood Greenways



Proposed	
	New 2026 Neighborhood Greenways
	Existing 2025 Neighborhood Greenways
	Multi-Use Trails
	Bike Lanes & Lower Stress Pathway Network

INTERACTIVE GIS MAP AND MORE INFO

Downtown Routes



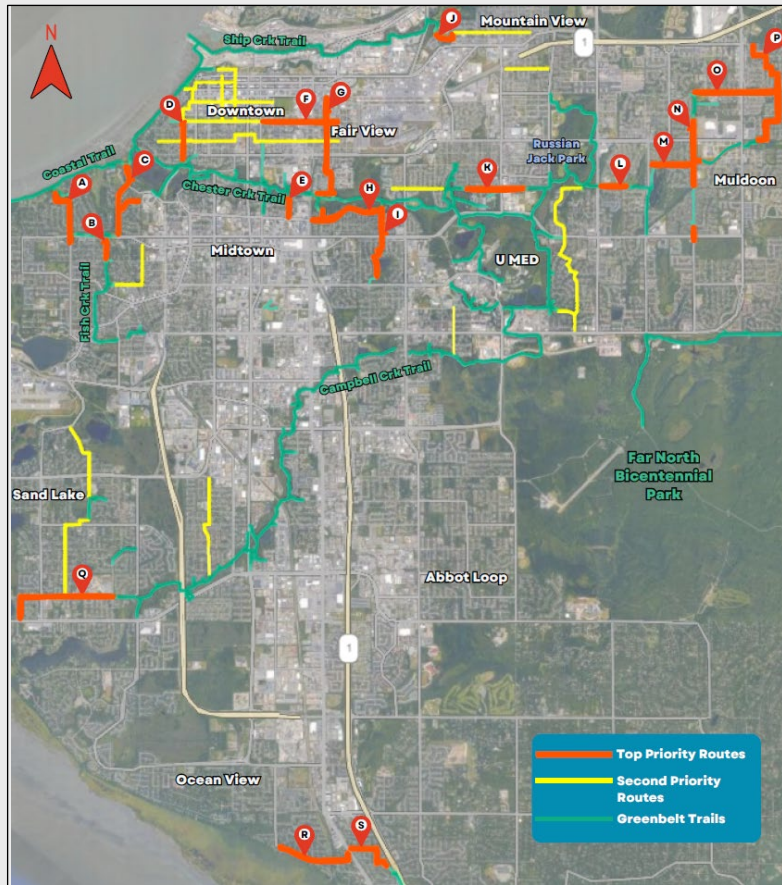
Proposed 2026 Routes	
	Downtown Neighborhood Greenways
Existing Biking & Rolling Network	
	Multi-Use Trails
	Existing Bike Facilities



Signing & Marking Show Lane Markings

2025 Program and Impact:

- Added 14 miles of Neighborhood Greenways.
- Included robust public input with GIS Survey and 14+ Community Council Presentations.
- Traffic data collection and impact assessment scheduled this summer.



2025 Greenway Planning Map

Bicyclists on E 20th Ave Greenway



Paint and Sign Crew at work



New Sign Types



Intersection of Karluk and 10th Ave Greenways

MEET THE CITIES

Anchorage, AK

Anchorage Neighborhood Greenway Program

In 2025, the Municipality of Anchorage launched its Neighborhood Greenway program to promote, connect, and formalize an existing low-stress, non-motorized network along local streets. Neighborhood Greenways are designed to prioritize pedestrians and bicyclists while maintaining access for residential vehicles. Treatments such as modified sharrows, branded 20 mph speed limits, and wayfinding signage help calm traffic, increase visibility for shared use, and make navigation easier for non-motorized users. These proven strategies create safer environments for families to walk and bike, while enhancing connections to greenbelt trails, parks, safe routes to schools, and business districts.



(Intersection of two Neighborhood Greenways at the Fairview Community Center)



INTERACTIVE GIS MAP AND MORE INFO

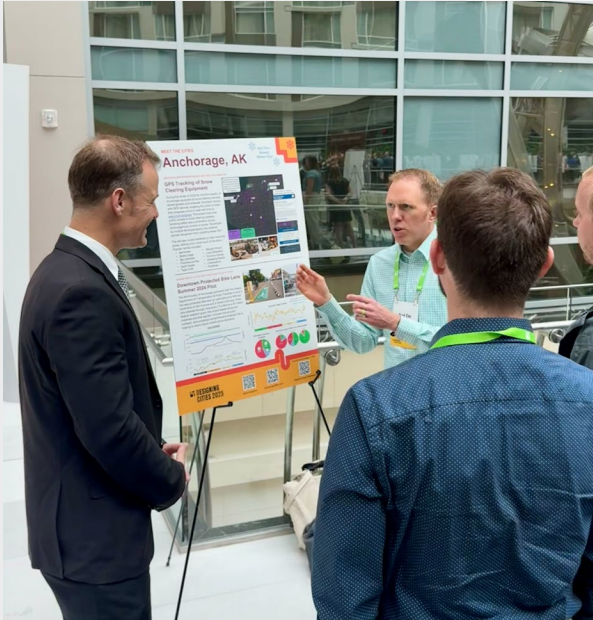
Brad Coy - Anchorage Municipal Traffic Engineer
Bradley.Coy@anchorageak.gov

Donovan Camp - Bicycle/Pedestrian/Traffic Calming Coordinator
Donovan.Camp@anchorageak.gov

The program's first year delivered 14 miles of enhanced shared-use treatments. An additional 13 miles are planned for construction this summer (shown in bright green and orange, respectively, on the map).

This program follows an annual, iterative approach. Ongoing data collection—before and after implementation—will be used to monitor traffic conditions and evaluate the effectiveness of greenway designations. Future efforts will include intersection upgrades, additional traffic calming measures, and expanded network connections. Repaving projects will incorporate and refine greenway treatments to ensure the design continues to support low-volume traffic conditions.

Winter City Compatibility: Inconsistent pathway plowing and increased traffic stress during winter snow event conditions have led many users to prefer neighborhood routes. While the city works to address these long-term challenges, enhancing a neighborhood non-motorized network provides an immediate improvement to these alternative routes. The program has a relatively neutral impact on the city's maintenance budget.



Meet the Cities Event



Minneapolis All Season Complete Street

Questions and Contacts:



Brad Coy - Anchorage Municipal Traffic Engineer
Bradly.Coy@anchorageak.gov

Donovan Camp – Bicycle/Pedestrian/Traffic Calming Coordinator
Donovan.Camp@anchorageak.gov



MOA Neighborhood Greenway Webpage Link

<https://www.muni.org/Departments/traffic/Pages/Greenways.aspx>