

Submitted by: ASSEMBLY REAPPORTIONMENT
COMMITTEE
Prepared by: Assembly Counsel
For reading: February 15, 2022

ANCHORAGE, ALASKA
AO No. 2022-37(S-1)*

1 **AN ORDINANCE OF THE ANCHORAGE ASSEMBLY PROVIDING FOR**
2 **REAPPORTIONMENT OF THE ASSEMBLY ELECTION DISTRICTS.**
3

4
5 **WHEREAS**, for the Assembly’s consideration, attached is **Map 11 [MAP 6V2]** for
6 reapportioning Assembly Election Districts; and
7

8 **WHEREAS**, Anchorage Municipal Charter section 4.01 states the "assembly shall
9 be reapportioned whenever it becomes malapportioned” and requires the Assembly
10 to review its election districts following the State of Alaska's adoption of a final state
11 redistricting plan.
12

13 **WHEREAS**, after the U.S. 2020 Census and the State of Alaska’s adoption of a final
14 state redistricting plan, the Assembly declared itself malapportioned with passage
15 of AR 2021-382 on November 23, 2021; and
16

17 **WHEREAS**, the Assembly’s Reapportionment Committee explored a number of
18 alternatives, keeping in mind the mandates of federal, state and local law, including
19 principles of “one person, one vote”, equal protection’s substantial equality of
20 population, and the requirement to maintain compact and contiguous districts
21 containing as nearly as practicable relatively integrated socioeconomic areas; and
22

23 **WHEREAS**, the public was invited to submit Assembly apportionment maps to the
24 Committee and several maps were received;
25

26 **WHEREAS**, the Assembly Reapportionment Committee selected maps best
27 meeting the legal criteria and public policy objectives for reapportioning at this time,
28 and introduces the attached **[PUBLIC SUBMISSION]** map from **Assembly**
29 **Member Weddleton, Map 11 [ANCHORAGE ACTION, MAP 6V2]** for the full
30 Assembly’s consideration; now, therefore,
31

32 **THE ANCHORAGE ASSEMBLY ORDAINS:**
33

34 **Section 1.** The official Assembly Election Districts apportionment map is replaced
35 with the Assembly reapportionment map in Exhibit A, **Map 11 [MAP 6V2]**, attached
36 hereto. The revisor of ordinances shall replace the existing map in Anchorage
37 Municipal Code section 2.25.010 with Exhibit A.
38

39 **Section 2.** Anchorage Municipal Code section 2.25.010 is hereby amended to
40 read as follows:
41

(*Note: legislative drafting shows only changes from original AO, does not show changes from other S versions.)

2.25.010 - Election districts.

A. There are established six election districts, each of which is entitled to the following number of assembly members:

- 1. District 1 (Downtown), two [ONE] members.
- 2. District 2 (Eagle River/Chugiak), two members.
- 3. District 3 (West Anchorage), two members.
- 4. District 4 (Central Anchorage), two members.
- 5. District 5 (East Anchorage), two members.
- 6. District 6 (South Anchorage), two members.

B. The geographic boundaries of the districts established in this section are described on the copy of the official assembly apportionment map following this section. The original of this map is maintained in the office of the municipal clerk.

C. Assembly members shall be elected by the voters of their respective election districts.

(AO No. 81-37; AO No. 81-76; AO No. 85-77; AO No. 86-11; AO No. 88-76; AO No. 91-20; AO No. 91-182; AO No. 2001-159, §§ 1, 2, 9-11-01)

Section 3. The new official Assembly Election Districts Map in Section 1 shall be applicable to all Municipal elections held subsequent to the April 5, 2022 regular election, except any new election ordered as a remedy after an election contest to any Assembly seat race on the April 2022 regular election ballot shall be conducted with the former Assembly Election Districts Map.

Section 4. This ordinance shall be effective immediately upon passage and approval by the Assembly.

PASSED AND APPROVED by the Anchorage Assembly this _____ day of _____, 2022.

Chair of the Assembly

ATTEST:

Municipal Clerk

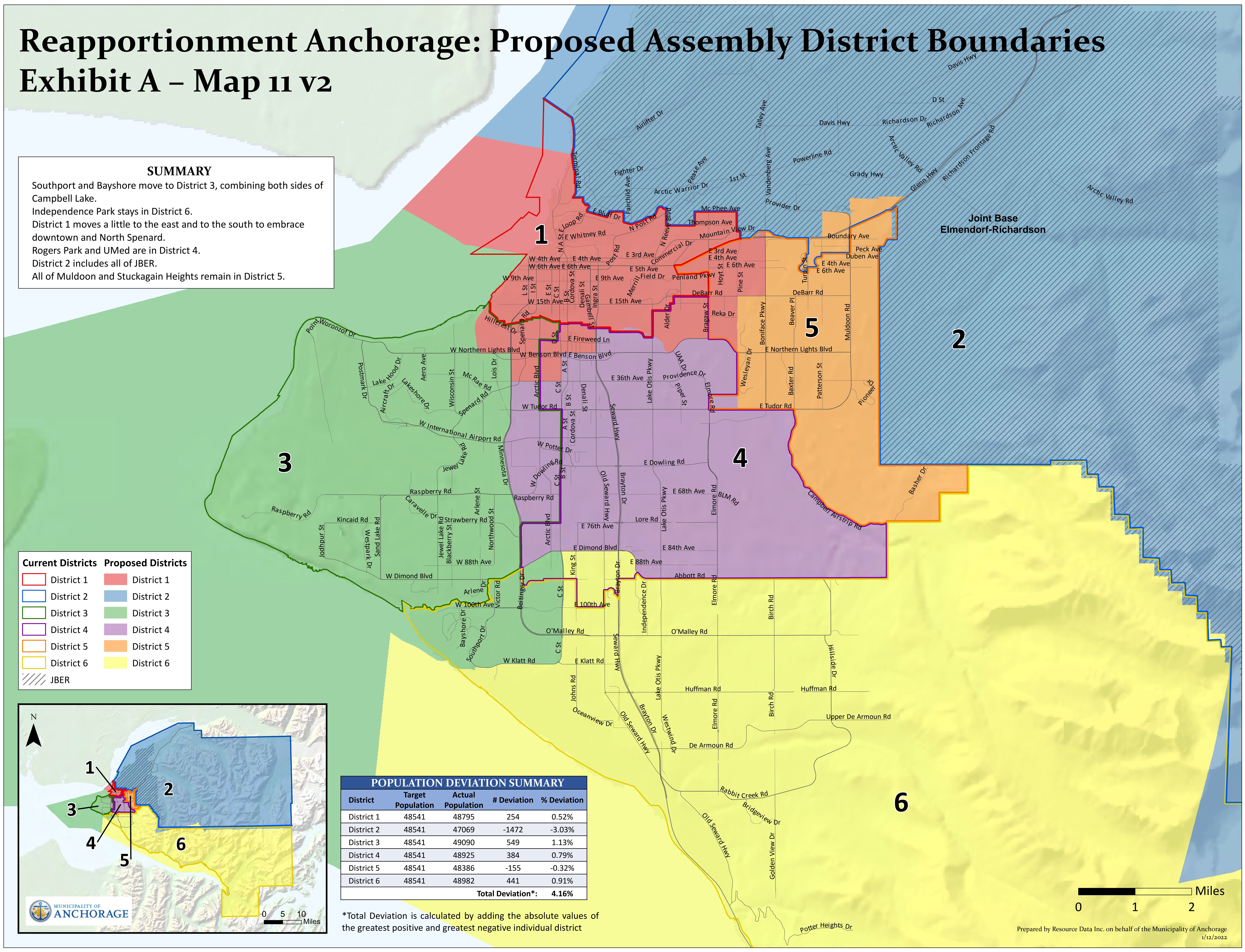
1
2
3
4
5
6
7
8
9
10
11
12
13
14
15
16
17
18
19
20
21
22
23
24
25
26
27
28
29
30
31
32
33
34
35
36
37
38
39
40
41
42

Reapportionment Anchorage: Proposed Assembly District Boundaries

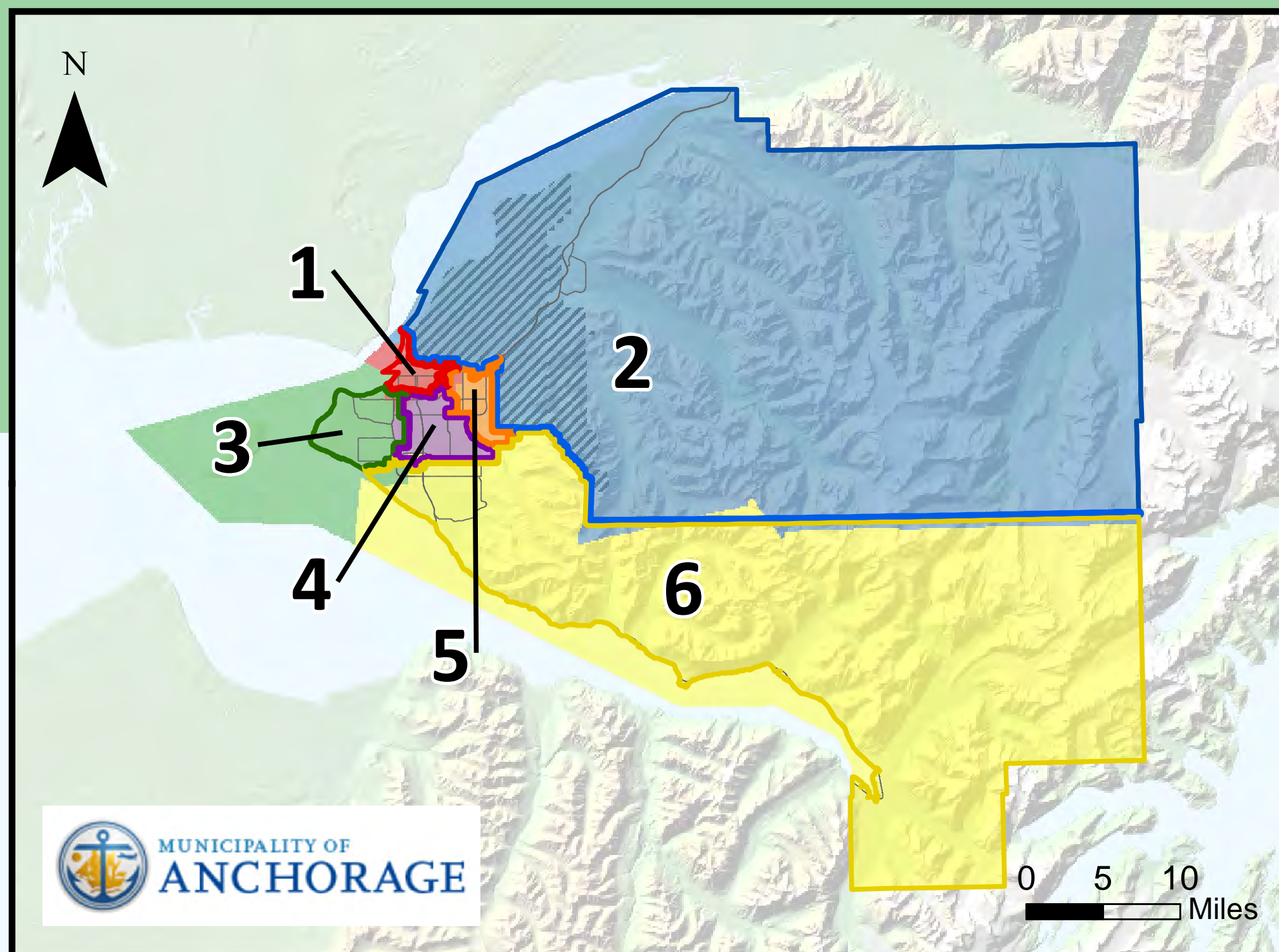
Exhibit A – Map 11 v2

SUMMARY

Southport and Bayshore move to District 3, combining both sides of Campbell Lake.
 Independence Park stays in District 6.
 District 1 moves a little to the east and to the south to embrace downtown and North Spenard.
 Rogers Park and UMed are in District 4.
 District 2 includes all of JBER.
 All of Muldoon and Stuckagain Heights remain in District 5.



Current Districts	Proposed Districts
District 1	District 1
District 2	District 2
District 3	District 3
District 4	District 4
District 5	District 5
District 6	District 6
JBER	



POPULATION DEVIATION SUMMARY				
District	Target Population	Actual Population	# Deviation	% Deviation
District 1	48541	48795	254	0.52%
District 2	48541	47069	-1472	-3.03%
District 3	48541	49090	549	1.13%
District 4	48541	48925	384	0.79%
District 5	48541	48386	-155	-0.32%
District 6	48541	48982	441	0.91%
Total Deviation*:			4.16%	

*Total Deviation is calculated by adding the absolute values of the greatest positive and greatest negative individual district

