

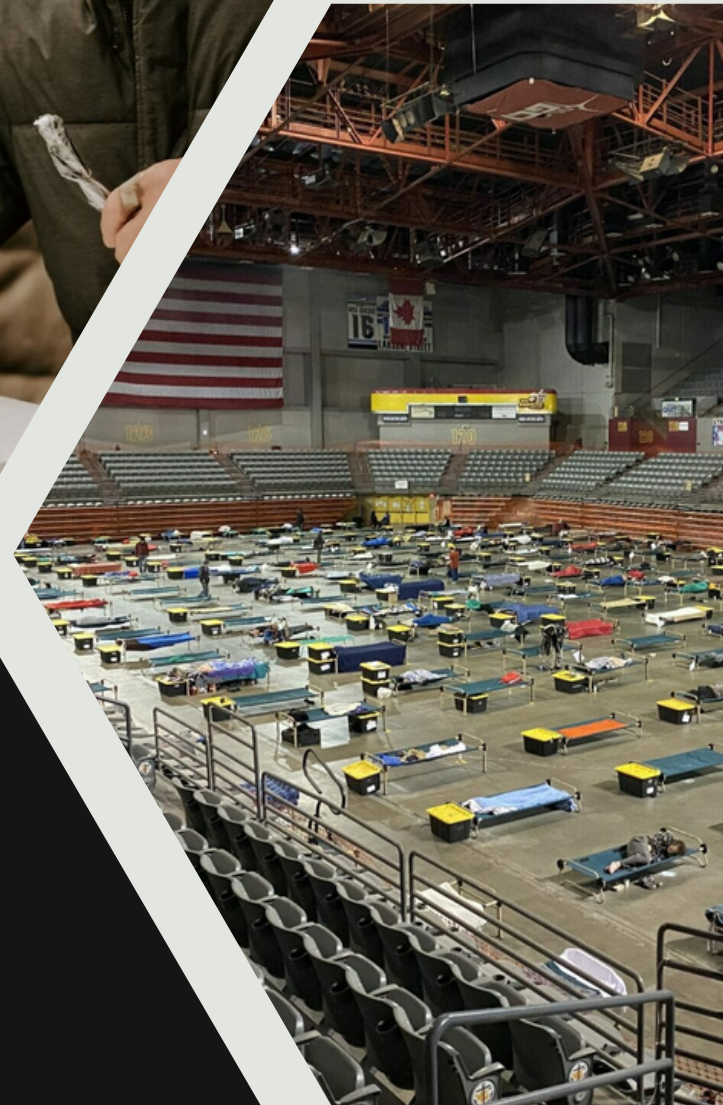


SWS ADMIN

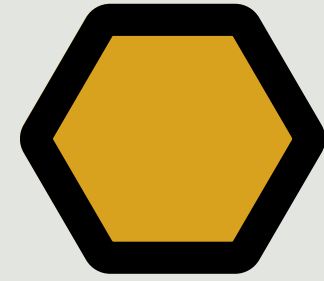
1111 E. 56th Ave



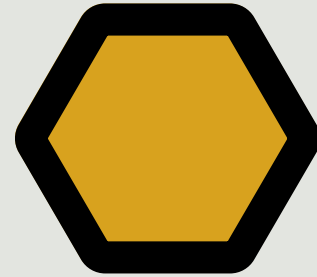
**Anchorage Health
Department**



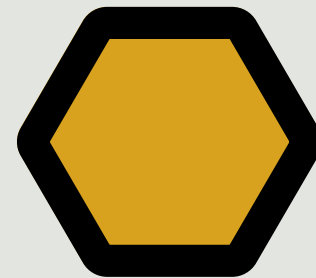
AGENDA



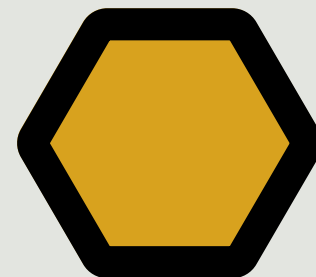
ITB CLOSING



SWS FACILITY



TIMELINE



DEMOBING OF CAMPS



ITB CLOSED FOR NON CONGREGATE & CONGREGATE FACILITY

ITB closes October 2nd & 4th - **UPDATE** Due to City Hall power outage affecting pre-bid conference.

Award to follow. Contract Negotiations

Assumptions after initial discussions prior to ITB: 272 Beds @ Location 1, 100 Beds at Location 2, up to 150 Beds @ Location 3.

Total: Up to 522 available , (400 fully funded)



Strategic Planning

The Closing of Camps

Currently AHD Outreach has been working with providers to figure out which campers are planning to seek emergency cold weather.

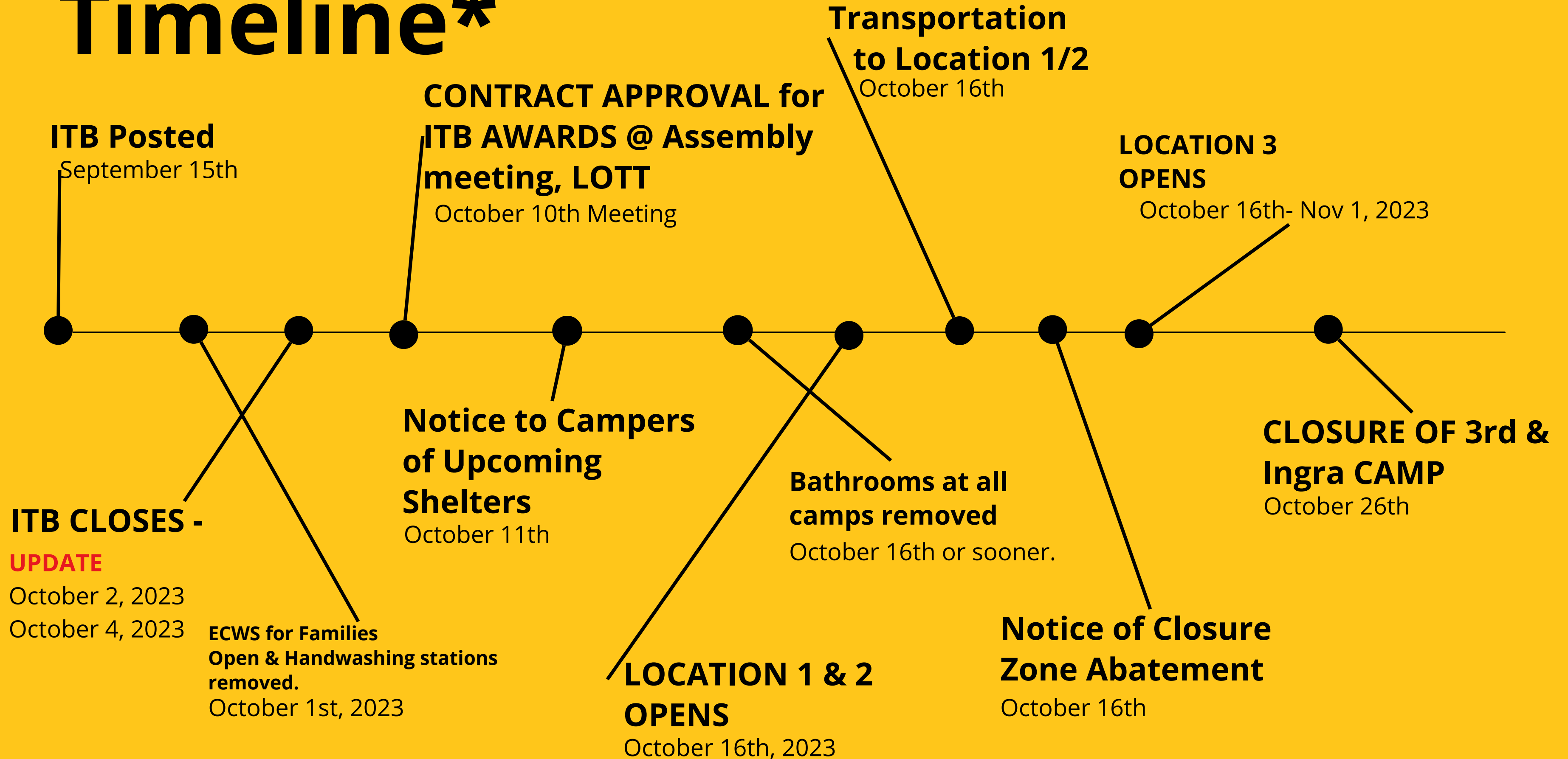
Clients have been surveyed for which facility would suit their needs best. ADA needs matching ADA facility etc. Viability or projected success in non congregate vs congregate locations.

Our priority is to work with clients at 3rd/Ingra encampment, Chanshtnu, Cuddy Park/Archive, and Davis Park.

It is our goal to get 3rd & Ingra **posted and closed** and to move all clients into shelter or housing.

***In a perfect world**

Timeline*



SWS ADMIN UPDATES



- **Available**

Facility is undergoing fire inspection corrective actions (~\$150K) making this facility available and we are planning to utilize for ECWS pending contract approval from assembly.

- **Met with Community**

- Taku Campbell
- Midtown
- Campbell Park



Waived in Title 16 Dec
CURRENTLY ACTIVATED

Zoning



Sq Feet



Condition



ADA

1st floor



School



Playground



Transportation



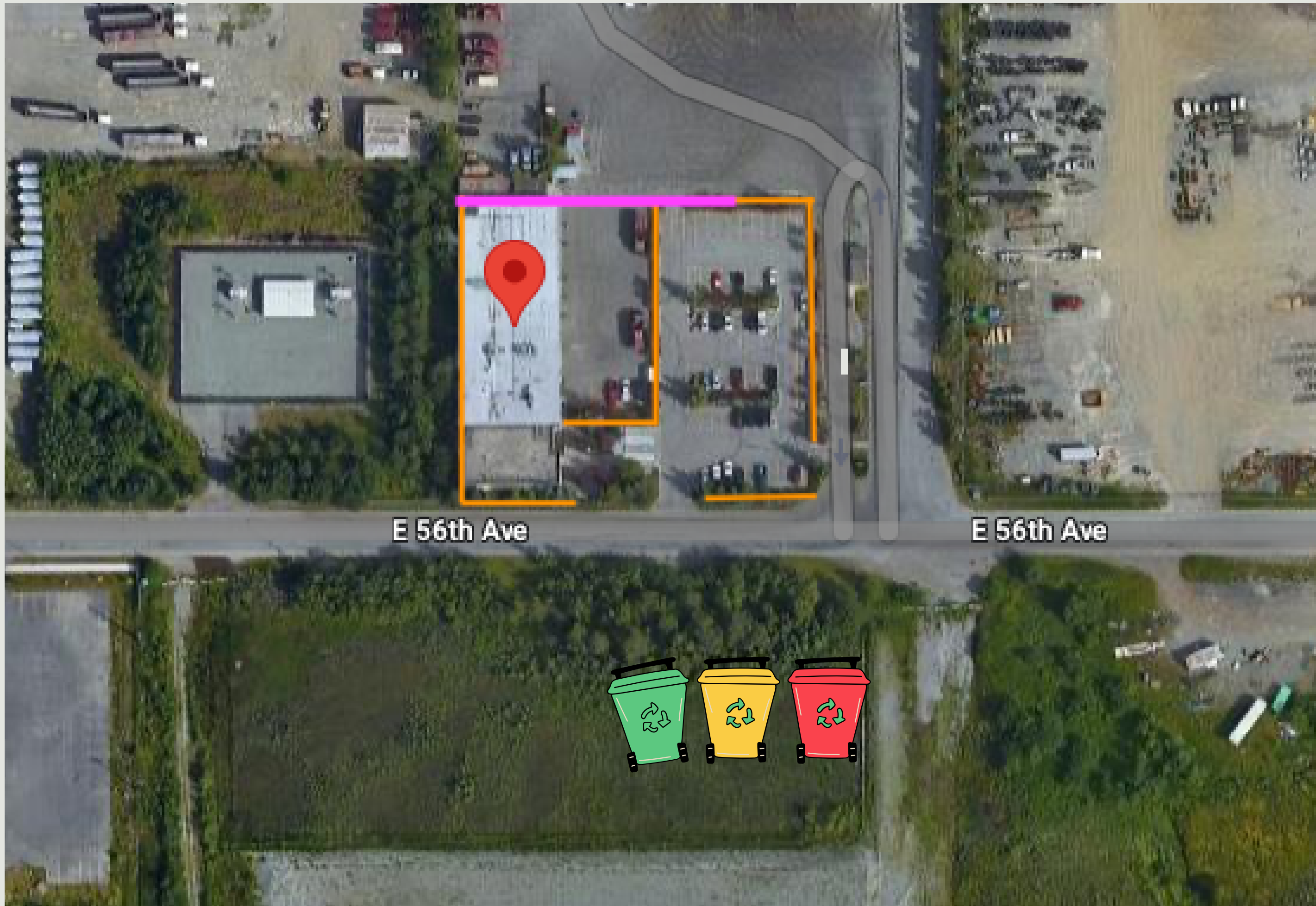
Visibility



Residential



CLEAN SLATE STRATEGY



E 56th Ave

E 56th Ave

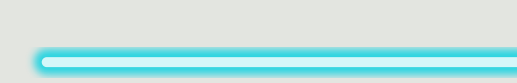
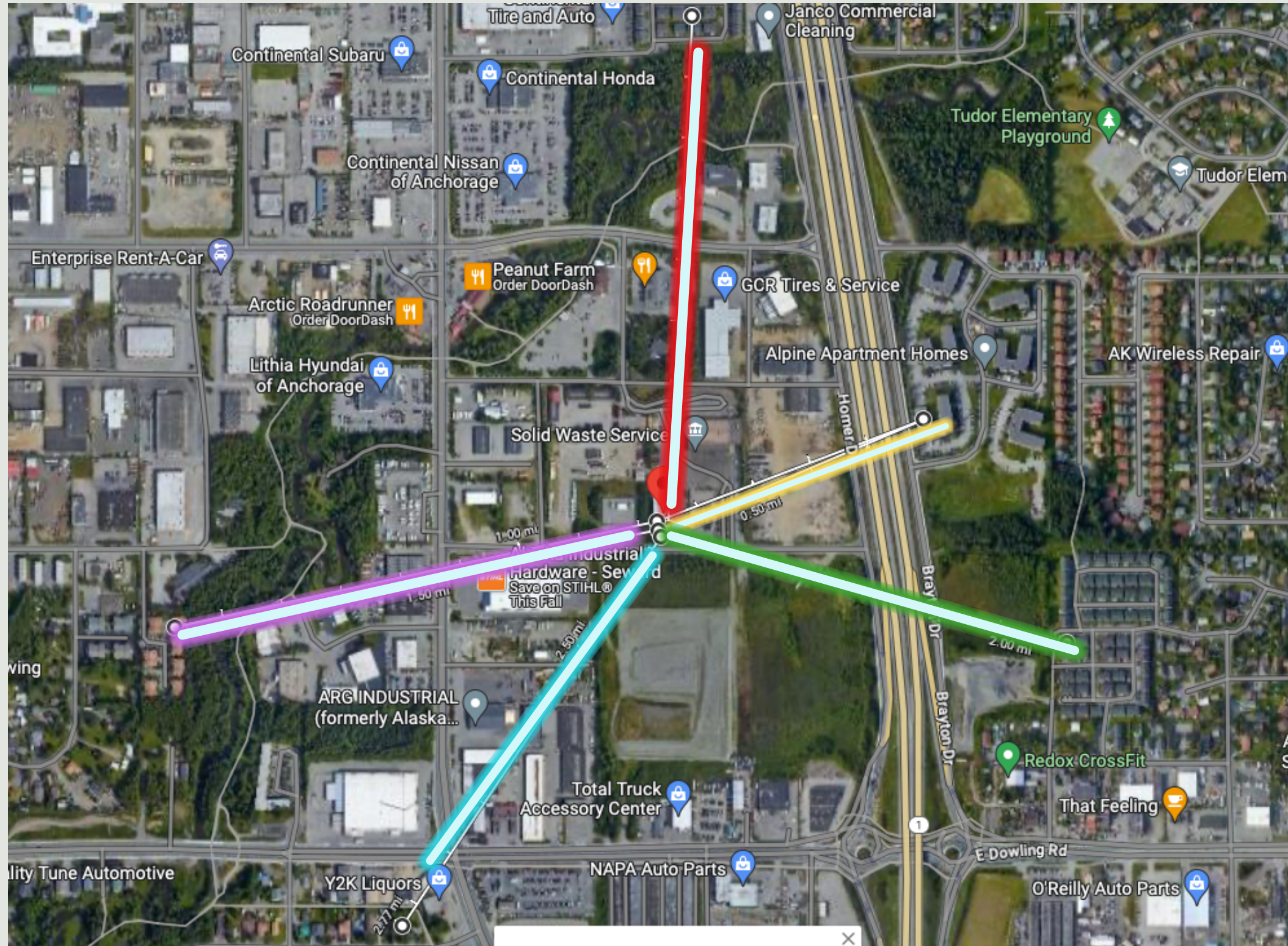


 Existing Fence

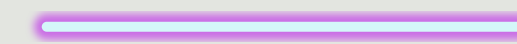
 Adding Fence


New SWS Facility

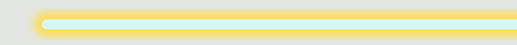
Residential



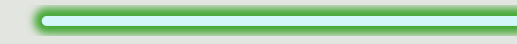
2127 ft



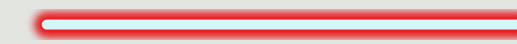
2132 ft~



1243 ft*



1803 ft*



2199 ft

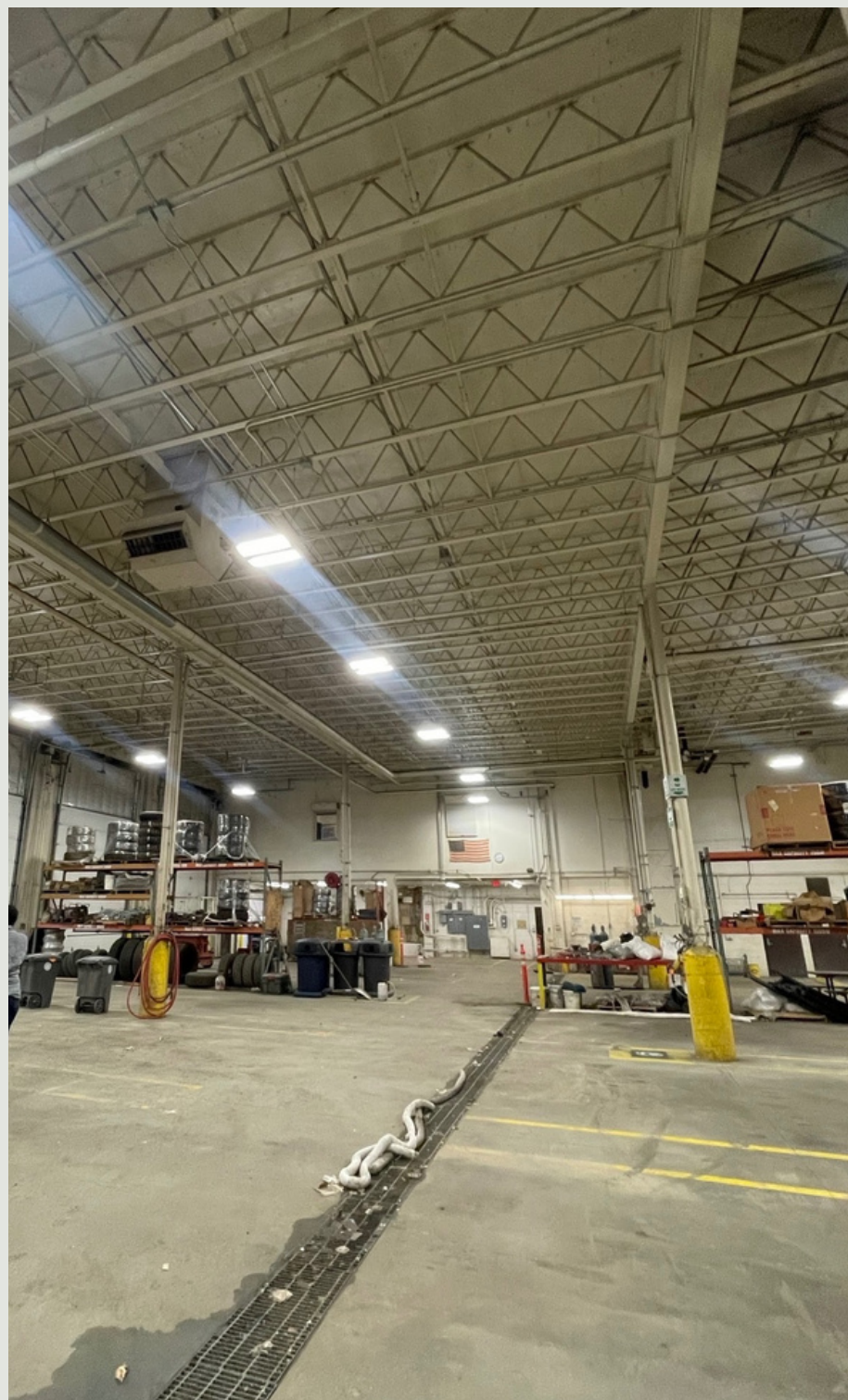
***Separated by the New Seward Highway**
~ Separated by Campbell Creek

Nearest Bus Stop

1,030 Feet

Old Seward & 56th

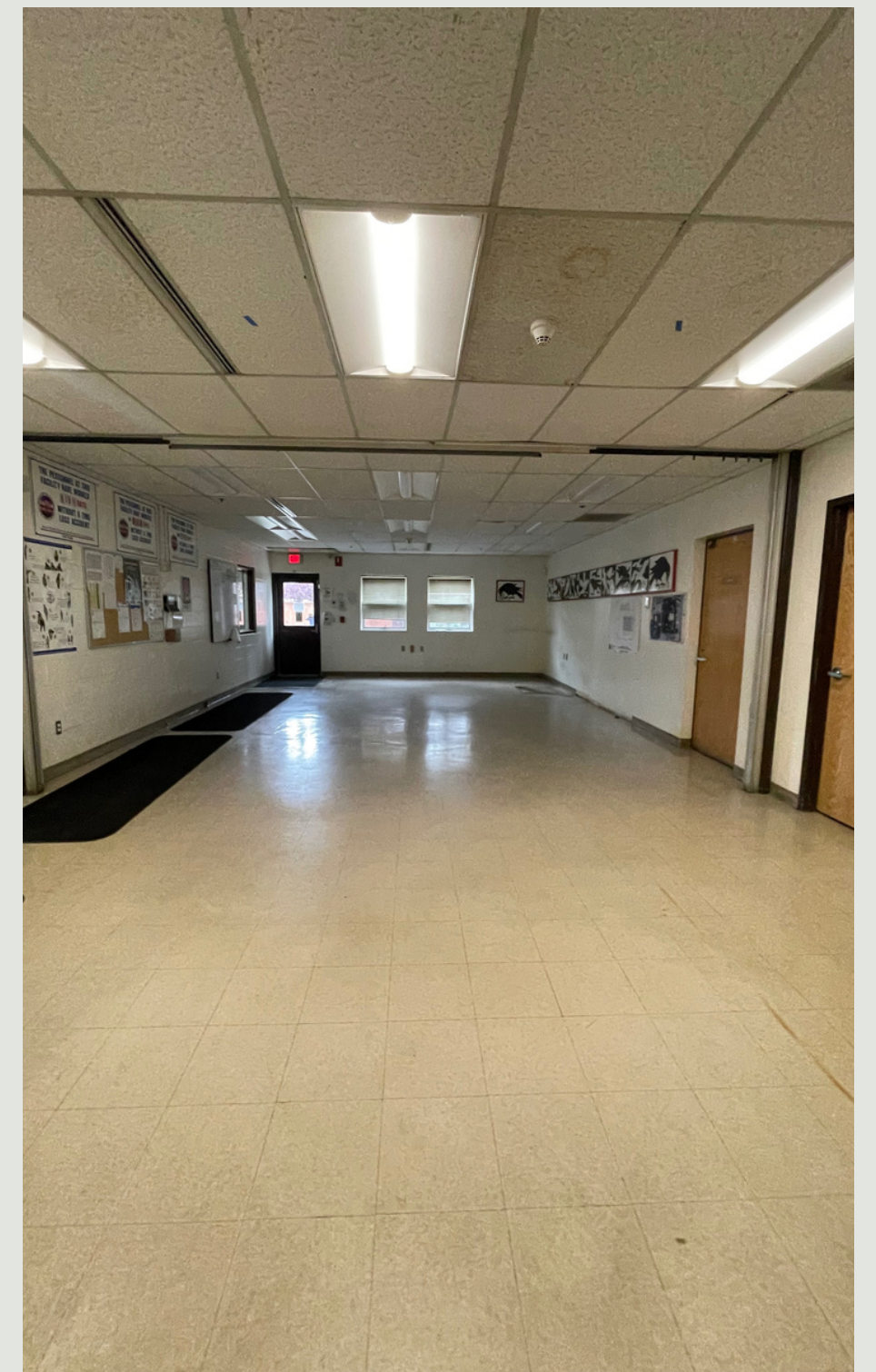




Large Bays will be utilized for shelter beds and 2 tote storage.



Private offices will be used for intake and navigation



Large spaces for dining and food service.



Front entry is safe and secure and not conducive for loitering or predatory behavior.



Large fenced-in outdoor space for outdoor activities, pet space and small smoking section.



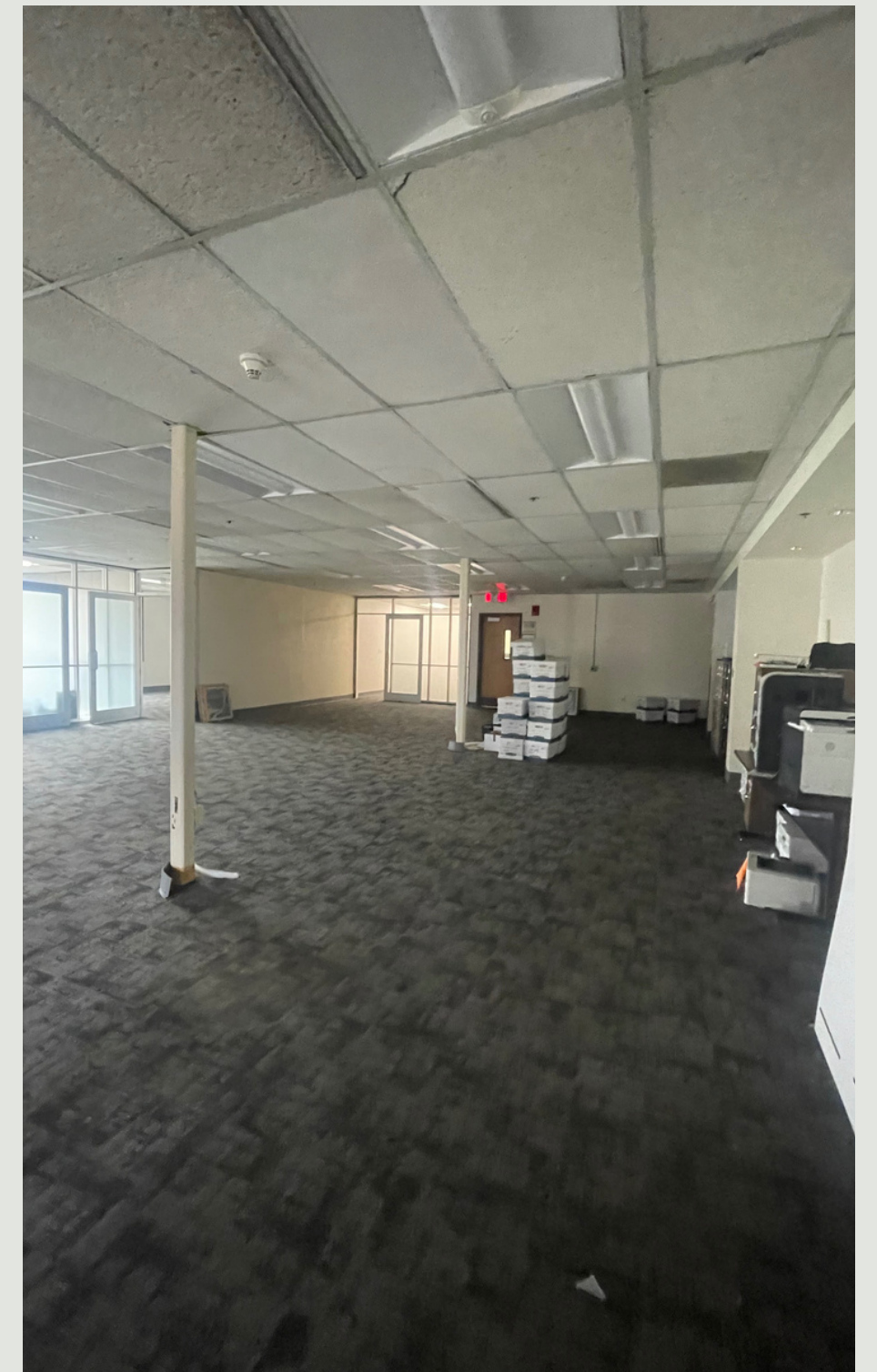
Locker Room space available.



Men & Women's Bathrooms are fully functional, 3 showers on site.



2 small kitchens in the building to allow for warming of personal food. This will not be utilized for daily service.



Large indoor spaces for tv room, & day engagement center

Noteworthy updates

UPDATE

Working with Law to find solutions.

Because SWS is an enterprise, this is not a simple lease or use agreement like the Sullivan Arena. There are a few additional legal questions still unanswered on how to best lease up the facility.

LOTT - SORRY!

Because of the ITB delay, we will most likely be seeing a number of Laid on the Table documents for Assembly approval.

Closure of Camps

Currently priority remains at 3rd & Ingra, Chanshtnu Muldoon Park then we will reassess under Martin V Boise which additional encampments can be closed.

CONTACT



Alexis Johnson



907-343-9841



alexis.d.johnson@anchorageak.gov

