



Merrill Field (MRI) CARES Plan Update

By

Ralph Gibbs, PhD, ATP, CM

Airport Manager

May 19, 2021





MRI CARES Vision

- Use CARES as AIP match to more fully execute airport master plan projects debt free, many of which were postponed due to a lack of matching funds.
- Restructure airport processes to ensure airport economic viability after CARES expires.
- Next slide shows the proposed CARES spending plan through June 2024 with \$.5M reserve for future match requirements





2020-2024

MRI CARES Overview

GRANT	\$ Amount	Notes
DOT CARES I	\$ 17,898,469.00	exp 4/24
DOT CARES II	\$ 1,009,004.00	exp 6/25
Total CARES	\$ 18,907,472.00	
Plan CARES Dev	\$ 9,200,000.00	
Plan CARES AIP Match	\$ 666,850.00	
Plan CARES Operating	\$ 8,470,684.00	
Sub Total/RESERVE for future AIP match	\$ 569,938.00	

* FAA provided \$10M for Airport Access road w/o any match Requirement. Thus, net effect of CARES is plus another \$625K.

* CARES Development will be managed by the FAA just like AIP.





MRI CARES Priorities & 2020-2024 Vision

- Provide financial relief to airport customers (2021-Done)
- Replace Maintenance (MX) vehicles, snow removal vehicles (POs in process)
- Rehab MX spaces (Engineering In Process)
- Fund engineering for precision approach into and departures out of Merrill (Development In Process).





MRI CARES Vision

- Rehab Orca street properties, thereby improving MOA “interface” with Fairview neighbors (**Engineering In Process**)
- Acquire City Electric (CE) properties for development, to house high tech aviation companies, such as Launch Alaska (LA) (**Waiting for Environmental study**).
- Property includes a large parking lot, separate from three large office buildings, both suitable for development and revenue generation.





MRI CARES Vision

- Acquire flight simulators from SOA property disposal to continue Medallion Foundation mission to reduce Controlled Flight into Terrain (CFIT) accident rates in Alaska (**Done-75K**)
- Make flight simulation assets available to all flight schools on Merrill field, AK General Aviation pilots looking to keep their instrument skills proficient, and University of Alaska, Anchorage Aviation (**Done**)





MRI CARES Vision





MRI CARES Vision

- Build MOA Sim Center (10,000 sq ft) on CE parking lot (**Waiting for Environmental study for next steps**)
- Pave CE parking lot for ORCA street businesses and CE property developers (**Waiting for Environmental study for next steps**)





MRI CARES Vision



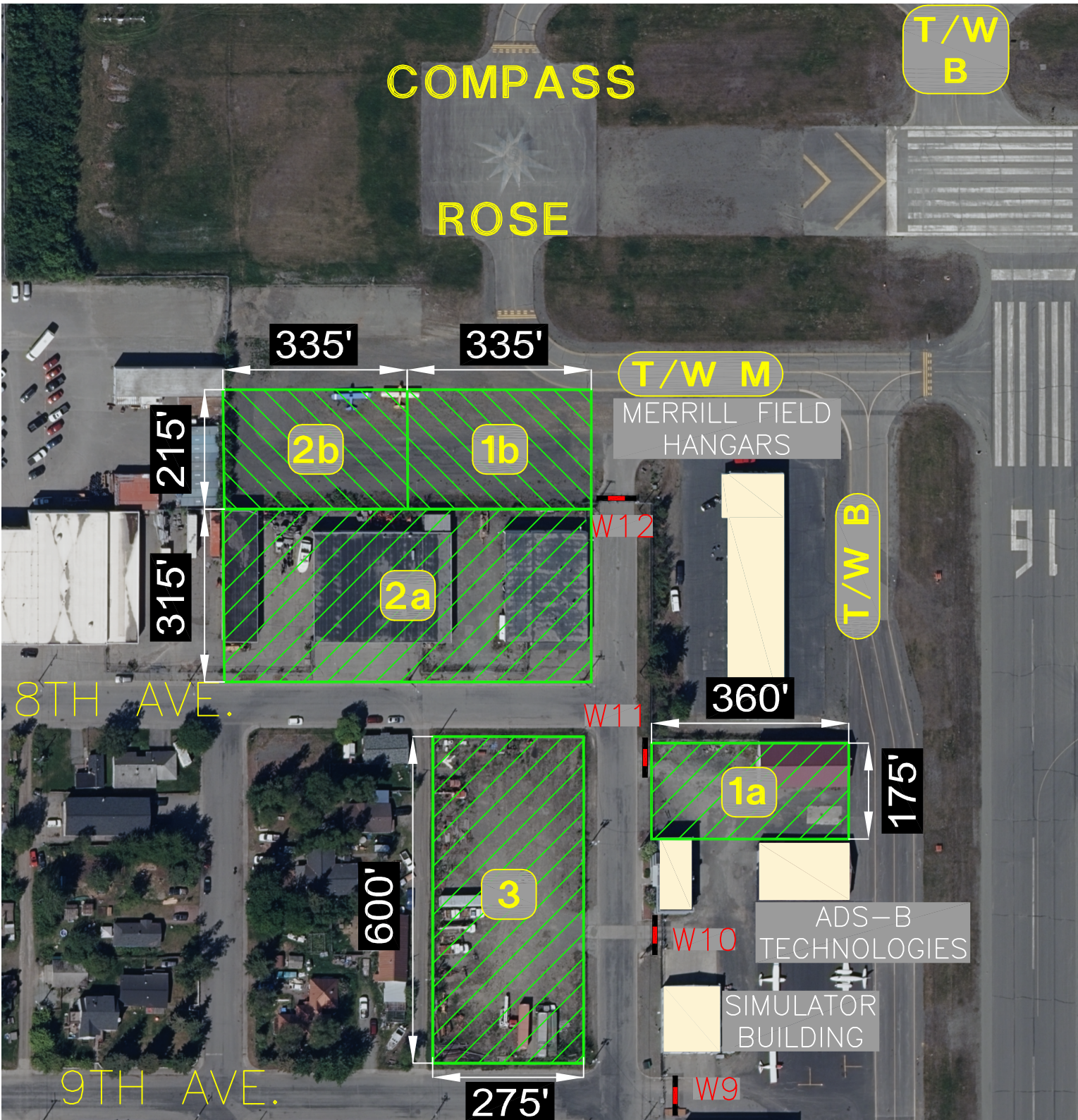


Concluding Remarks

- Between AIP grants and CARES development, construction grant dollars into the Anchorage economy equals approximately \$34M!

- Questions?





COMPASS

ROSE

T/W
B

335'

335'

T/W M

MERRILL FIELD
HANGARS

2b

1b

215'

315'

2a

W12

T/W
B

8TH AVE.

360'

W11

175'

1a

600'

3

ADS-B
TECHNOLOGIES

W10

SIMULATOR
BUILDING

9TH AVE.

275'

W9