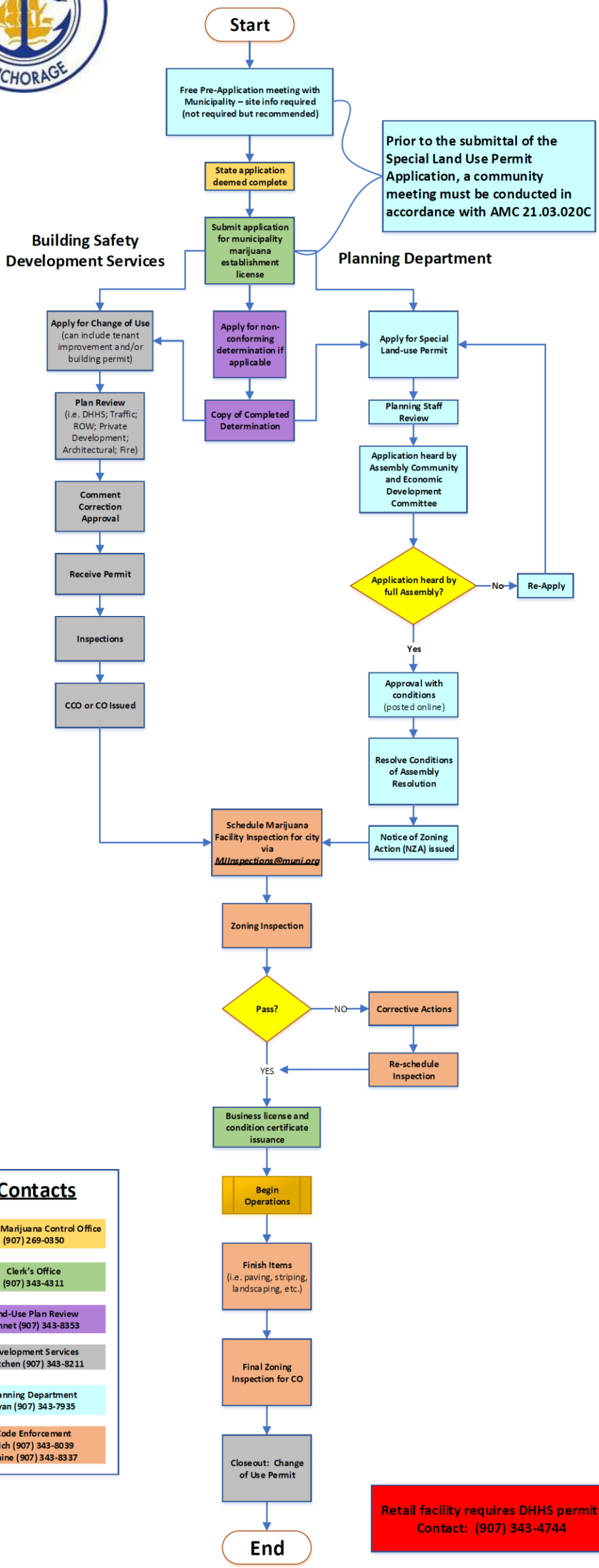




Marijuana Permit Flowchart



Contacts

- Alcohol/Marijuana Control Office (907) 269-0350
- Clerk's Office (907) 343-4311
- Land-Use Plan Review Sonnet (907) 343-8353
- Development Services Gretchen (907) 343-8211
- Planning Department Ryan (907) 343-7935
- Code Enforcement Rich (907) 343-8039 Elaine (907) 343-8337

Retail facility requires DHHS permit. Contact: (907) 343-4744