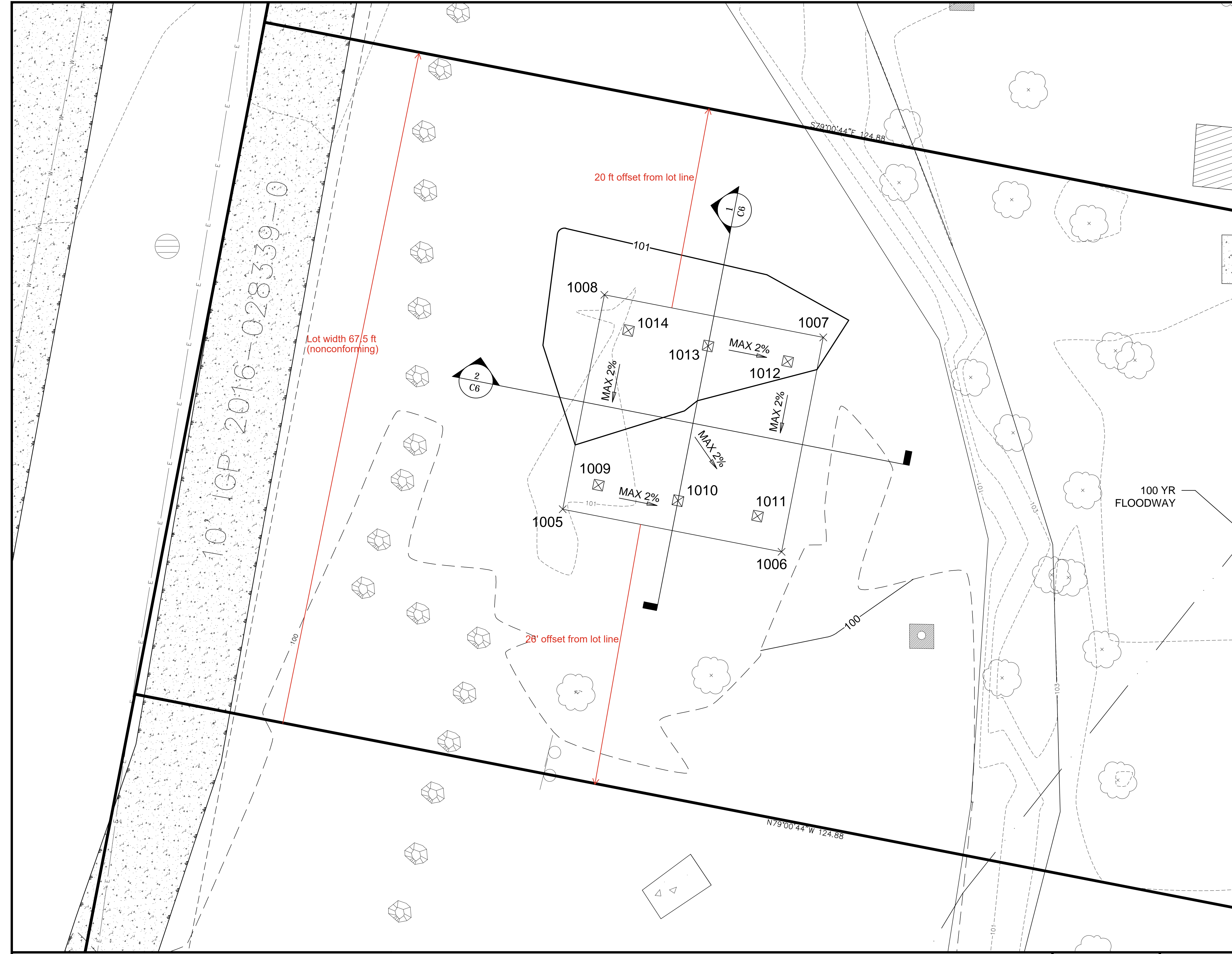


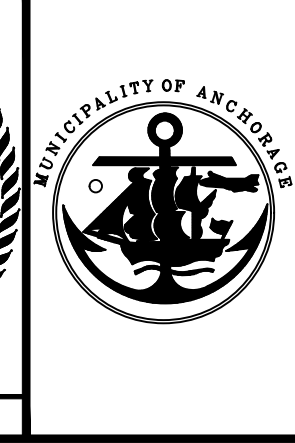
Point Table				
Point #	Northing	Easting	Elevation	Description
1005	2544153.86	1794298.59	100.88	SLAB CORNER
1006	2544149.65	1794320.19	100.66	SLAB CORNER
1007	2544170.80	1794324.30	101.06	SLAB CORNER
1008	2544175.00	1794302.71	101.28	SLAB CORNER
1009	2544156.23	1794302.11	-	POST
1010	2544154.70	1794309.96	-	POST
1011	2544153.17	1794317.82	-	POST
1012	2544168.43	1794320.79	-	POST
1013	2544169.95	1794312.93	-	POST
1014	2544171.48	1794305.08	-	POST



APPROVED
 DATE 7/22/2025
 BY Paul Hatcher
 MUNICIPALITY OF ANCHORAGE
 PLANNING DEPARTMENT

FIELD BOOKS	BM NO.	LOCATION	ELEV.	DATA	DRAWN BY	CHECKED BY	DATA	DRAWN BY	CHECKED BY	REVI	DATE	DESCRIPTION	BY	REVI	DATE	DESCRIPTION	BY
DESIGN:				BASE	TBC		TELEPHONE	---									
STAKING:				TOPOGRAPHY	TBC		ELECTRIC	---									
ASBUILT:				PROFILE	---		CABLE TV	---									
CONTRACTOR:				SANITARY SEWER	---		TRAFFIC SIGNAL	---									
INSPECTOR:				STORM SEWER	---		DESIGN	---									
				WATER	---		QUANTITIES	---									
				GAS	---		MUN. FINAL CHECK	---									
CONSTRUCTION RECORD		VERTICAL DATUM		PLAN CHECK													

hbc
 The Boutet Company, Inc.
 601 E. 57th Place #102
 Anchorage, AK 99518
 Ph. 907-522-6776
 Fx. 907-522-6779
 License No. AECC957
 CONSULTANT



PROJECT MANAGEMENT AND ENGINEERING DEPARTMENT
 GIRWOOD LIONS CLUB PARK SHELTER
 SITE AND GRADING PLAN
 HORZ SCALE: 1"=5' DATE 02/21/2025 GRID: SE4815 SHEET C5 of C6
 VERT SCALE: N.T.S. acct. No.