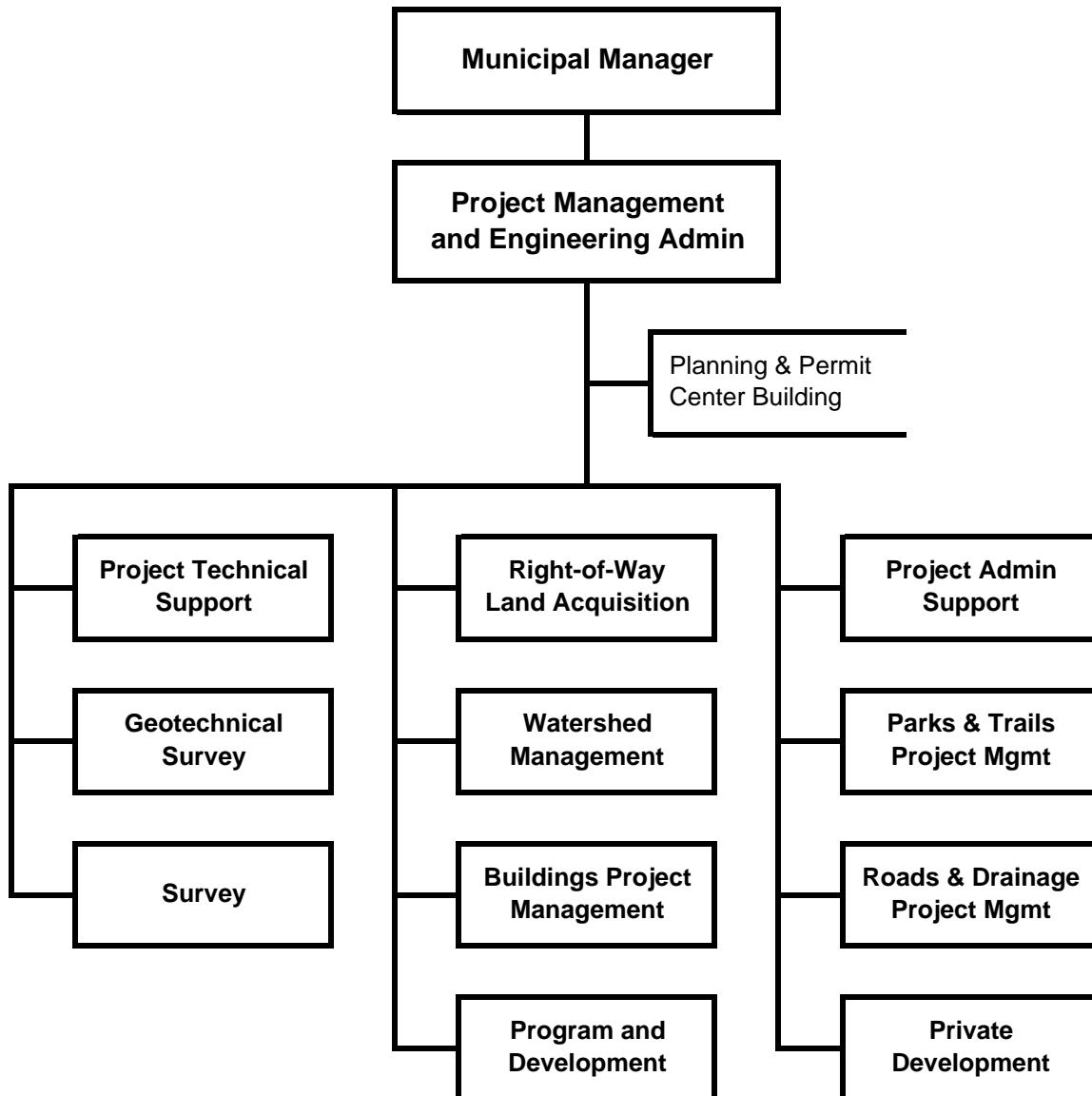


---

# PROJECT MANAGEMENT AND ENGINEERING

---



2007 Updated General Government Operating Budget

**Project Management & Engineering**

**Resource Plan**

Description	2006 Revised	2007 Approved	2007 Updated
<b>Financial Summary</b>			
Administration	\$ 492,900	\$ 499,040	\$ 540,100
Project Technical Support	799,370	866,990	825,960
Geotechnical Survey	289,980	305,990	329,450
Survey	218,280	237,930	241,860
Right-of-Way Land Acquisition	242,530	264,700	263,580
Watershed Management	1,615,770	1,366,800	1,404,840
Buildings Project Management	108,250	117,760	117,920
Program & Development	362,190	383,670	389,140
Project Admin Support	541,910	593,500	585,380
Parks and Trails Project Management	274,280	305,440	286,780
Roads & Drainage Project Management	1,574,620	1,706,890	1,771,630
Private Development	647,440	700,560	669,610
<b>Operating Cost</b>	<b>7,167,520</b>	<b>7,349,270</b>	<b>7,426,250</b>
Add Debt Service	-	-	-
<b>Direct Organization Cost</b>	<b>7,167,520</b>	<b>7,349,270</b>	<b>7,426,250</b>
Charges From/(To) Others	(4,519,200)	(4,827,610)	(4,873,350)
<b>Function Cost</b>	<b>2,648,320</b>	<b>2,521,660</b>	<b>2,552,900</b>
Less Program Revenues	1,466,750	1,386,560	1,386,560
<b>Net Program Cost</b>	<b>\$ 1,181,570</b>	<b>\$ 1,135,100</b>	<b>\$ 1,166,340</b>
<b>Personnel Summary</b>			
Full-Time Employees	62	62	62
Part-Time Employees	-	-	-
Temporary Employees	3	3	3
<b>Total Employees</b>	<b>65</b>	<b>65</b>	<b>65</b>
<b>Resource Costs by Category</b>			
Personal Services	\$ 6,131,120	\$ 6,643,650	\$ 6,605,310
Supplies	75,410	75,410	100,960
Other Services *	1,259,260	928,480	1,018,250
Depreciation & Amortization	-	-	-
Capital Outlay	9,340	9,340	9,340
<b>Total Direct Cost</b>	<b>7,475,130</b>	<b>7,656,880</b>	<b>7,733,860</b>
Less Vacancy Factor	(307,610)	(307,610)	(307,610)
Add Debt Service	-	-	-
<b>Total Direct Organization Cost</b>	<b>\$ 7,167,520</b>	<b>\$ 7,349,270</b>	<b>\$ 7,426,250</b>
* Travel for this department included in the Other Services category	\$ 2,500	\$ 2,500	\$ 2,500

2007 Updated General Government Operating Budget

**Project Management & Engineering**

**Reconciliation From 2006 Revised Budget to 2007 Updated Budget**

	<u>Direct Costs</u>	<u>Positions</u>		
		<u>FT</u>	<u>PT</u>	<u>T</u>
<b>2006 Revised Budget</b>	\$ 7,167,520	62		3
<b>2006 One-Time Requirements</b>				
- Hillside District Plan	(300,000)			
<b>Debt Service Changes - Not Applicable</b>				
<b>Changes in Existing Programs for 2007</b>				
- Salary and benefits adjustments	474,190			
<b>2007 Continuation Level</b>	\$ 7,341,710	62	-	3
<b>Transfers (To)/ From Other Agencies</b>				
- None				
<b>2007 Program/Funding Changes</b>				
- Fleet vehicle fuel distribution	25,550			
- Fleet vehicle rentals	58,990			
<b>2007 Updated Budget</b>	<b>\$ 7,426,250</b>	<b>62</b>	<b>-</b>	<b>3</b>

2007 Updated General Government Operating Budget

**Project Management & Engineering**

**OPERATING GRANT FUNDED PROGRAMS**

GRANT PROGRAM	FY 2006				FY 2007				Latest Grant Expiration
	Anticipated resources used Amount	FT	PT	T	Anticipated resources used Amount	FT	PT	T	
TOTAL GRANT FUNDING	\$ 593,234	1	-	-	\$ 623,704	3	-	-	
TOTAL PROJECT MANAGEMENT & ENGINEERING GENERAL GOVERNMENT OPERATING BUDGET	\$ 7,167,520	62	-	3	\$ 7,426,250	62	-	3	
	\$ 7,760,754	63	-	3	\$ 8,049,954	65	-	3	
GRANT FUNDING MAY REPRESENT	8.28%	OF THE DEPARTMENT'S REVISED 2006 DIRECT COST OPERATING BUDGET.							
GRANT FUNDING MAY REPRESENT	8.40%	OF DEPARTMENT'S DIRECT COST IN THE UPDATED 2007 OPERATING BUDGET.							
NPDES PERMIT REIMBURSEMENT	\$ 298,704				\$ 298,704	2			2007
- Reimbursement from State of Alaska for Municipal efforts managed and performed as required by federal NPDES Permit.									
PCSRF CREEKS COMMUNITY DEVELOPMENT MANAGER	\$ 75,000	1			\$ 200,000	1			Jun-09
- Reimbursement from State of Alaska for Anchorage efforts of oversight, coordination and outreach regarding Pacific Coastal Salmon Recovery.									
U.S. FISH AND WILDLIFE REIMBURSABLE GRANTS									
- Little Campbell Creek Watershed Grant to subsidize efforts in creating a watershed plan.	\$ 10,000				\$ 25,000				Dec-07
- Rain Garden Grant will reimburse efforts to promote environmental stewardship in the city.	\$ 35,000				\$ -				2006
STATE OF ALASKA REIMBURSEMENT GRANTS									
- Little Campbell Creek Sediment Study grant will reimburse efforts to identify sediment sources in Little Campbell Creek.	\$ 32,000				\$ -				2006
- Water Quality Education Grant will reimburse Municipal efforts to inform the public on water quality issues impacting Anchorage creeks.	\$ 42,530				\$ -				2006
- Girdwood Flood Hazard Mapping Grant will reimburse efforts to perform a flood hazard study for Furrow and Glacier Winter Creeks.	\$ 50,000				\$ 100,000				Jun-08
RABBIT CREEK WATERSHED ASSESSMENT	\$ 50,000				\$ -				2006
- U. S. D. A. reimbursement of efforts to accomplish Rabbit Creek watershed assessment.									
Total	593,234	1	-	-	\$ 623,704	3	-	-	