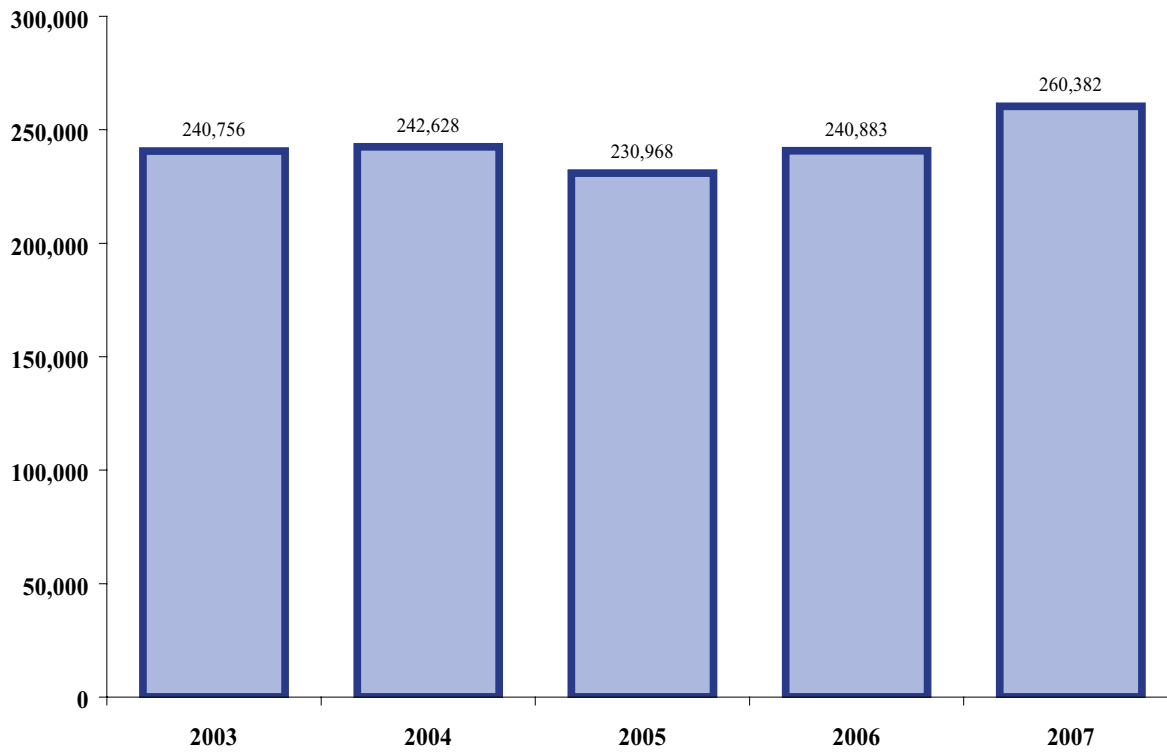


# APD Section



# Calls For Service 2003-2007

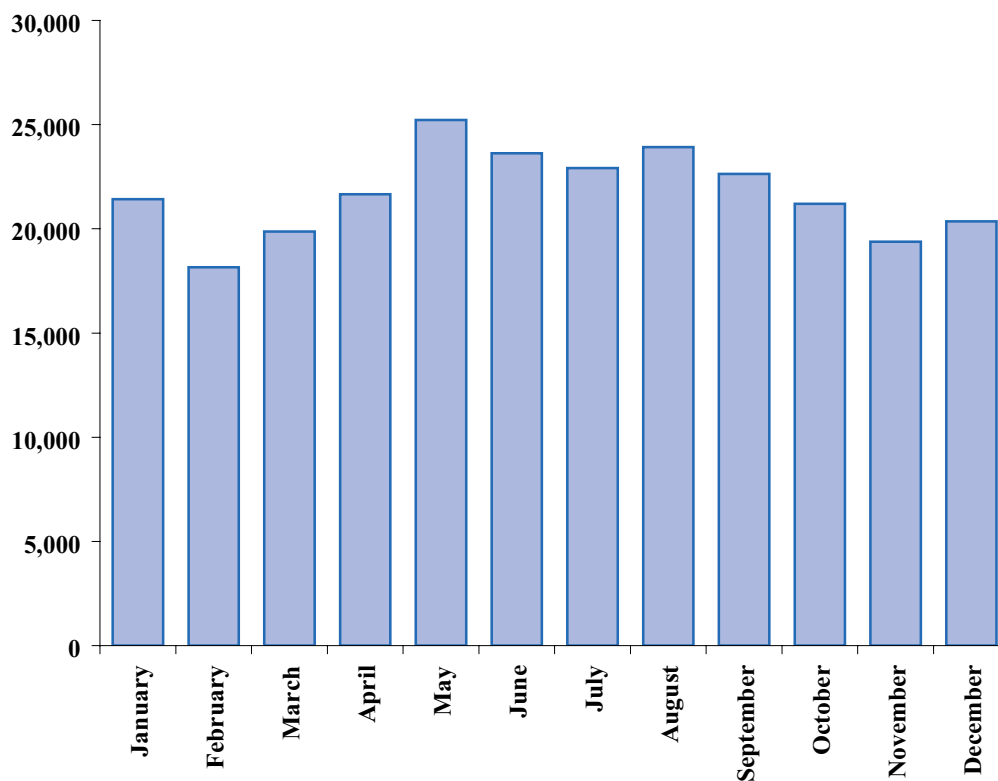


## Yearly Totals

<b>2003</b>	240,756
<b>2004</b>	242,628
<b>2005</b>	230,968
<b>2006</b>	240,883
<b>2007</b>	260,382

# Calls For Service by Month

## 2007

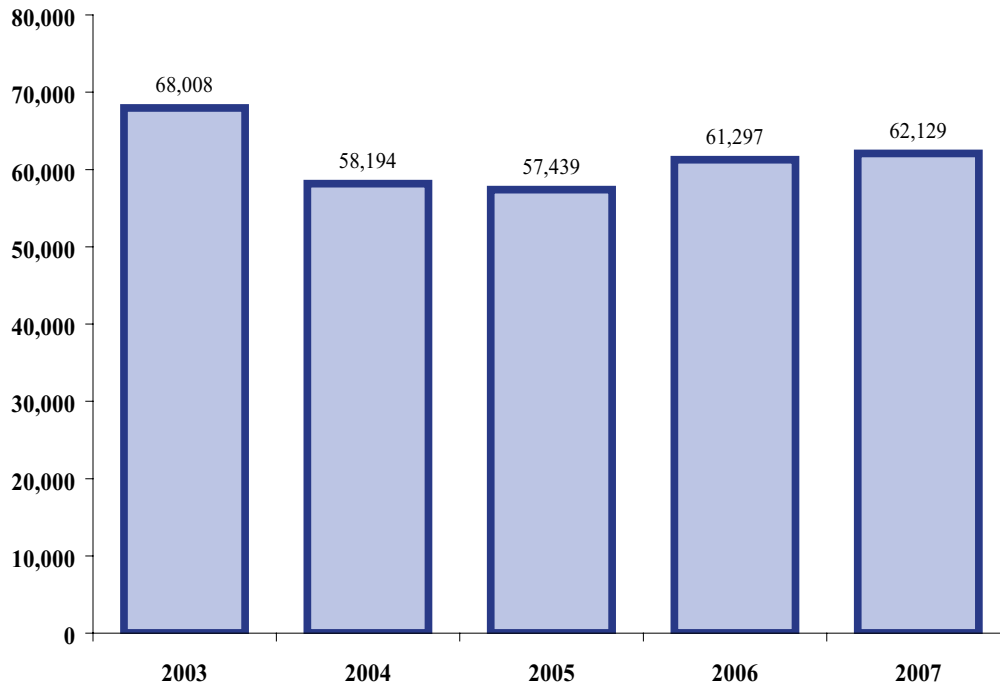


### Monthly Breakdown by Year

	2003	2004	2005	2006	2007
January	18,528	19,008	17,458	17,412	21,418
February	17,429	17,795	16,286	16,620	18,155
March	18,102	17,829	19,197	20,063	19,865
April	19,427	18,857	19,244	19,828	21,657
May	21,455	22,410	20,675	22,522	25,225
June	20,768	23,123	20,563	20,966	23,630
July	22,086	23,305	21,103	22,779	22,923
August	23,109	23,154	20,186	21,714	23,918
September	22,502	22,092	21,283	20,788	22,637
October	19,364	19,489	18,951	20,309	21,204
November	17,398	17,079	17,347	17,383	19,386
December	20,588	18,487	18,675	20,499	20,364
<b>Total</b>	<b>240,756</b>	<b>242,628</b>	<b>230,968</b>	<b>240,883</b>	<b>260,382</b>

# Police Reports

## 2003-2007



CATEGORY	2003	2004	2005	2006	2007
Homicide*	20	18	18	21	24
Sexual Assault*	364	325	297	306	325
Robbery	347	340	387	470	457
Assault*	3,485	3,264	3,435	3,601	4,093
Burglary	1,467	1,567	1,788	1,739	1,468
Theft	9,269	7,625	8,296	8,580	8,480
Motor Vehicle Theft	1,402	1,244	1,475	1,598	1,394
Arson	131	86	79	110	146
Fraud	1,973	1,830	2,196	2,593	2,692
Stolen Property	53	41	49	55	57
Criminal Mischief/Vandalism	4,403	2,833	3,094	3,095	3,387
Weapon Offense	264	320	284	316	249
Prostitution	50	105	94	176	335
Sex Offenses Against Juveniles**	366	269	255	273	367
Drugs	1,182	956	1,035	943	782
Gambling	20	10	9	4	12
Child Abuse/Neglect	419	319	325	350	413

\* Represents cases. UCR figures represent victims.

\*\* Only represents closed cases due to the confidentiality of this type of investigation.

# Police Reports

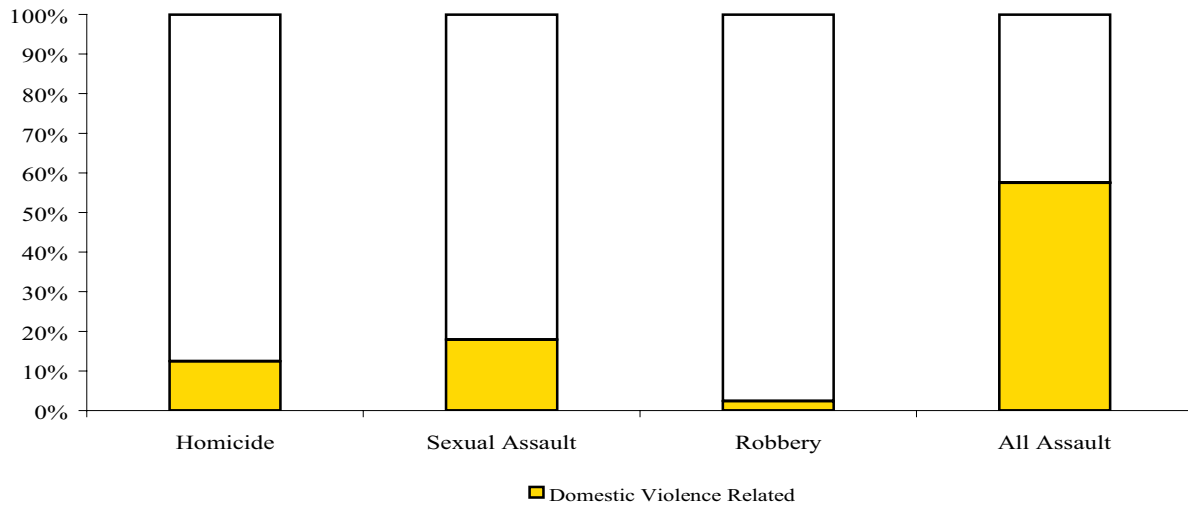
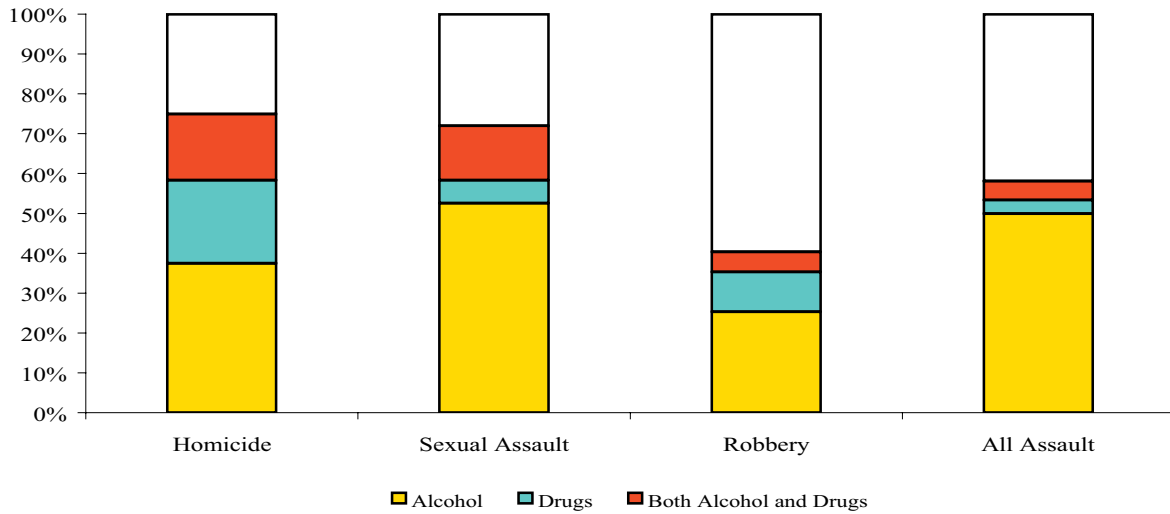
## 2003-2007 (continued)

<b>CATEGORY</b>	<b>2003</b>	<b>2004</b>	<b>2005</b>	<b>2006</b>	<b>2007</b>
Enticement of a Minor	7	5	5	28	6
DUI*	1,305	1,222	1,148	1,080	1,493
Liquor Law Violation	613	452	365	446	572
Drunkenness Offense	373	509	493	586	124
Disorderly Conduct	389	398	402	364	364
Indecent Exposure	52	43	47	47	52
Stalking	14	21	32	32	32
Suspicion	943	891	980	952	964
Juvenile Problem	122	67	48	55	48
Runaway	1,675	1,339	949	981	890
Rescue Assist	153	122	136	150	180
Conspiracy	1	1	0	0	0
Domestic Violence Related	583	523	494	503	473
Traffic Violation	5,022	4,017	3,324	3,722	3,965
Traffic Accident	10,085	8,538	7,928	8,472	8,541
Warrant Service	3,843	4,030	3,178	4,183	4,061
Escape/Resisting	198	196	195	232	187
Missing Person	606	557	501	528	525
Non-Criminal Deaths	304	266	281	272	333
Animal Problem	39	34	34	33	46
Lost/Found Property	2,249	1,710	1,640	1,596	1,596
Public Assist	370	305	380	482	495
Outside Assist	277	250	263	281	308
Unsecured Premise	10	6	3	0	0
Violation City/State Reg's	164	87	121	97	105
Disturbance	1,768	1,540	1,788	1,765	1,564
Civil Problem/Standby	200	187	197	182	135
False Alarm	6,221	5,430	5,372	5,718	5,840
False Information	175	194	180	191	194
Bomb Call/Explosives	46	22	42	28	33
Information Reports	830	685	681	669	591
Miscellaneous Incidents	85	54	42	21	17
All Other Offenses	4,071	3,341	3,074	3,371	3,714

\*Driving Under the Influence. Replaced DWI and adds drugs as a cause of impairment in addition to alcohol.

# Violent Crime-Contributing Factors

Alcohol, Drug and Domestic Violence Involvement Known to Police

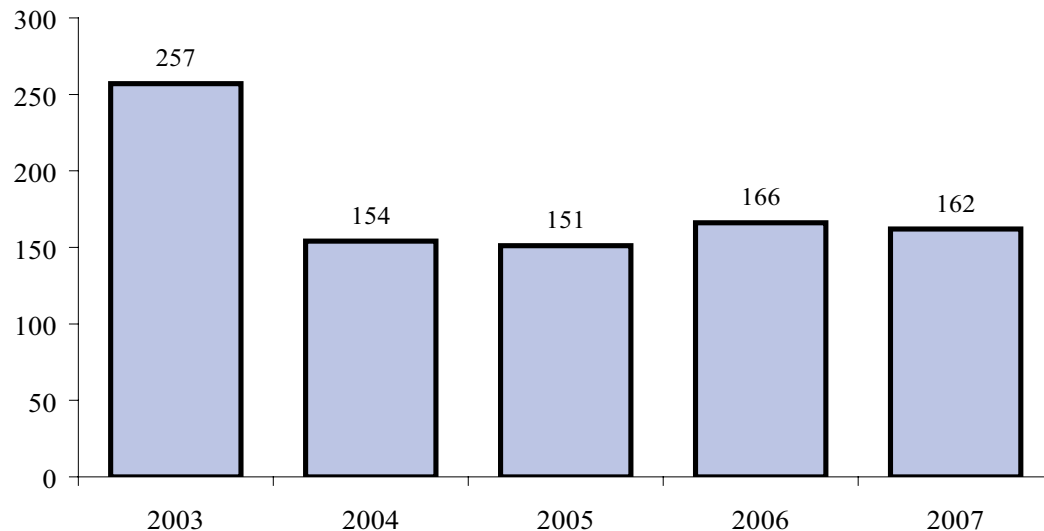


	<b>Total</b>	<b>Alcohol</b>	<b>Drugs</b>	<b>Both Alcohol and Drugs</b>	<b>DV</b>
Homicide	24	9	5	4	3
Sexual Assault	329	173	19	45	59
Robbery	458	116	46	23	11
All Assault	4096	2046	140	197	2357

*Percentages*

	<b>Alcohol</b>	<b>Drugs</b>	<b>Both Alcohol and Drugs</b>	<b>DV</b>
Homicide	38%	21%	17%	13%
Sexual Assault	53%	6%	14%	18%
Robbery	25%	10%	5%	2%
All Assault	50%	3%	5%	58%

# Under-21 Alcohol Violations 2003-2007

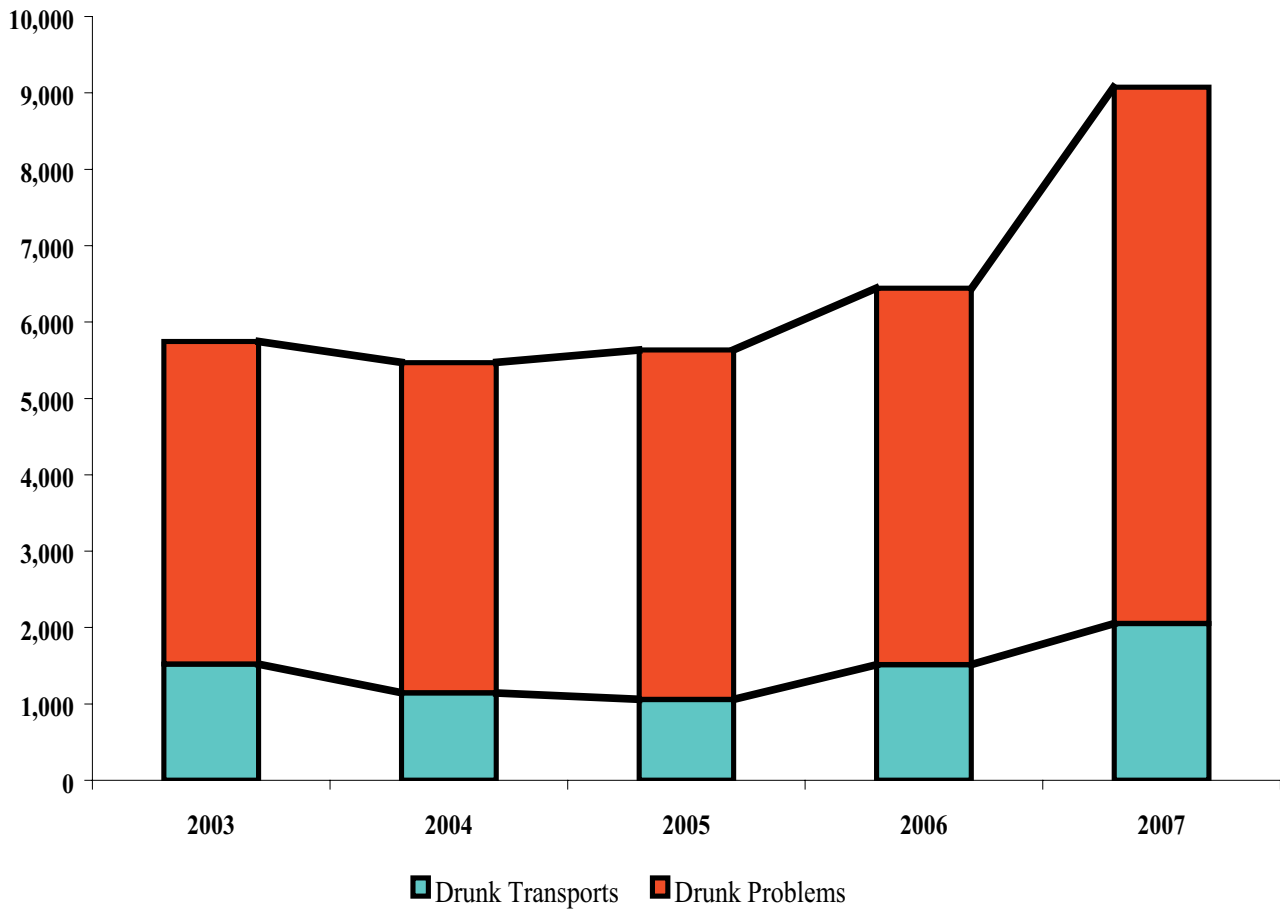


	<b>2003</b>	<b>2004</b>	<b>2005</b>	<b>2006</b>	<b>2007</b>
<b>Total</b>	257	154	151	166	162

The following select offenses were used in the compilation of this graph:  
 AS 4.16.050 prohibits possession, control, or consumption of alcohol by persons under the age of 21 years.  
 AS 4.16.060 prohibits purchase or solicitation to purchase of alcoholic beverages by or for persons under 21 years of age.

# Drunk Problems 2003-2007

*Calls for Service regarding drunk problems typically do not result in a police report, therefore, determining the number of actual incidents is problematic. The numbers below represent those calls that were not "cancelled" or "unfounded."*



	2003	2004	2005	2006	2007
Drunk Transports	1,522	1,144	1,058	1,516	2,055
Drunk Problems	4,225	4,326	4,580	4,927	7,021
<b>Total</b>	<b>5,747</b>	<b>5,470</b>	<b>5,638</b>	<b>6,443</b>	<b>9,076</b>