



Municipality of Anchorage, Alaska
Parks & Recreation Department

632 W. 6th Avenue, Suite 630
P.O. Box 196650
Anchorage, AK 99519
Tel 907-343-4355

URL www.muni.org/departments/parks



MEMORANDUM

Date: February 2, 2017

To: Parks & Recreation Commission

Cc: Josh Durand, Parks Superintendent

From: Tom Korosei, Park Planner

Project: **PRC 2017-08** AWWU Reservoir 6 Drainage Improvements (Proj. No. 7055)
Including Trail Upgrade—Hillside/Far North Bicentennial Park

PROJECT OVERVIEW—FLOOD-CONTROL BERM AND NEIGHBORHOOD TRAIL

Anchorage Water and Wastewater Utility is preparing to construct a berm approximately 700 feet long, 20 feet wide, and two feet high, within Hillside Park and extending into Far North Bicentennial Park. The purpose of the berm is to prevent potential flooding damage to property adjoining the westerly boundary of the Park north of Trailside Elementary School. As proposed the berm may include a trail along the top.

AWWU determined a potential for flooding and consequent property damage from draining the 10-million-gallon Water Reservoir No. 6 (Service High School), in an emergency. AWWU approached staff with alternative proposed solutions, including relocation of the drainage outfall, and different berm locations. The current outfall at the boundary of Trailside Elementary School discharges into the park.

The proposed berm was considered to be cost effective and have the least potential impact on the park, much of which is classified wetland. The placement of the fill material in this wetland area was approved by the Corps of Engineers under Nationwide Permit #39.

The alignment of the berm traverses an area characterized by relatively sparse vegetation, generally coinciding with a social trail that connects the neighborhood to the trail system within FNBP. The trail is not managed by the Municipality but appears to have considerable local use, with neighborhood additions such as wood planks in wetter areas. Because of apparent interest in continued public use of the trail, AWWU has incorporated a replacement of the trail in its berm design.

The *Far North Bicentennial Park Trail Improvements Plan* (Jan. 2011) does not propose improvement of this trail. The trail does not appear in the *Areawide Trails Plan* (1997); however, it was shown as a "Winter Only" trail on a "Far North Bicentennial Park and Campbell Tract Trails" map (2005) released by Parks & Recreation and BLM.

Besides aligning the berm to minimize disturbance of vegetation, the design incorporates other features to further minimize impacts to the area. The plan will salvage the organic mat in the berm area and replace it on the berm. Restoration will include supplemental topsoil and infill with appropriate seeding to facilitate revegetation. The project calls for varying the clearing limits as well as the specific alignment and "toe" of the berm to minimize clearing and provide a more natural contour and appearance.

AWWU has obtained public support for the project, including trail reconstruction, from residents in the neighborhood.

AWWU presented the proposed project to the Abbott Loop Community Council at its meeting January 26, 2017. Parks and Recreation staff presented the proposed project to the Far North Bicentennial Park Users Group at its meeting January 11, 2017.

Both of the Community Council and User Group generally support the project including trail improvements. As proposed the trail surface would be gravel, approximately 5 feet wide, similar to a Class 3 or Class 4 trail as described in the *Trail Improvements Plan*. Only the section that is incorporated as part of AWWU's drainage improvements would be improved at this time. The Parks and Recreation Department currently has no plan or funds to improve other portions of the trail to fully upgrade the trail connection.

Additional information about the project is attached.

STAFF RECOMMENDATION

The Parks and Recreation Department requests that the Parks and Recreation Commission approve the attached resolution of support for the proposed trail upgrade including construction of the portion as proposed by AWWU as part of its Reservoir 6 Drainage Improvements project.

Cc: Robin Ward, MOA Real Estate Dept.
Will O'Malley, AWWU



Municipality of Anchorage, Alaska
Parks & Recreation Commission

632 W. 6th Avenue, Suite 630
P.O. Box 196650
Anchorage, AK 99519



Resolution No. 2017-02

Request for Approval of Proposed Trail Improvements as Part of Proposed Reservoir 6 Drainage Improvements, Hillside Park/Far North Bicentennial Park

WHEREAS, the Anchorage Parks and Recreation Commission serves in an advisory capacity to both the Mayor and the Assembly; and

WHEREAS, the Anchorage Parks and Recreation Commission has the responsibility and duty to provide for the long term vision of our park system by ensuring that a balance of parks, natural resources, and recreation facilities provides for the health, welfare, and safety of all residents of the Anchorage Bowl; and

WHEREAS, the Anchorage Water and Wastewater Utility is proposing improvements to the drainage system for municipal Reservoir 6 (Service High), which system is also used by Trailside Elementary School and discharges water into Hillside Park; and

WHEREAS, proposed drainage improvements include construction of an earthen berm to control potential surface water flooding in the event of emergency draining of Reservoir 6; and

WHEREAS, the berm as proposed would coincide with a portion of an existing, informal, neighborhood trail that is not managed by the Municipality and is not identified for improvement as part of the *Far North Bicentennial Park Trails Improvement Plan* (2011); and

WHEREAS, the design and construction of the berm may include reconstruction of the informal trail using standards similar to Class 3 or 4 as described in the *Trails Plan*; and

WHEREAS, the Far North Bicentennial Park Users Group and Abbott Loop Community Council at their respective meetings in January 2017, as well as park area residents previously, have considered the AWWU drainage improvement plans including proposed trail improvements; and

WHEREAS, the above mentioned groups generally support the plans and in particular support proposed trail improvements; now, therefore,

BE IT RESOLVED, that the Anchorage Parks and Recreation Commission supports in principle the improvement and maintenance of the subject informal “non-managed” trail within Hillside Park and Far North Bicentennial Park, and supports construction of a portion of the trail as part of AWWU drainage improvements, to connect the Sahalee Subdivision and Trailside Elementary School area to the Homestead Trail.

PASSED AND APPROVED by the Anchorage Parks and Recreation Commission this 9th day of February 2017.

Chair
Parks and Recreation Commission

ATTEST:

John H. Rodda, Director
Parks & Recreation Department



MUNICIPALITY OF ANCHORAGE WATER AND WASTEWATER UTILITY

RESERVOIR 6 (SERVICE HIGH SCHOOL) DRAINAGE

AWWU PROJECT ID. NO.
000007055(WTR)
10/12/2016

SHEET INDEX	
SHEET	SUBJECT
1	CORNER SHEET
2	KEY MAP, NOTES, AND LEGEND
3-4	SURVEY CONTROL 1 & 2
5	WORK LIMITS & RESTORATION PLAN
6	BERM PLAN AND PROFILE
7-8	STORM DRAIN PLAN



VICINITY MAP
ANCHORAGE, ALASKA

PTS
PROFESSIONAL & TECHNICAL SERVICES, INC.
CONSULTING • ENGINEERING • SURVEYING
912 EAST 15TH AVE. SUITE 200
ANCHORAGE, ALASKA 99501
PHONE: (907) 561-8237
FAX: (907) 561-3913
LICENSE # REC0324

UNOFFICIAL
GRAPHIC SCALE
0 1/2 1 MILE 2 MILES

[illegible]

THIS BAR REPRESENTS ONE HALF INCH ON SCALE		1/2"		IF BAR IS NOT ONE INCH LONG, ADJUST DRAWING SCALE ACCORDINGLY.	
DATE	BY	DATA	REV	DATE	DESCRIPTION
10/1/80	W	PLATE	1		
		ENGINE			
		PLATE	2		
		CABLE TV			
		PLATE 3 SERIAL			
		DRISH			
		QUANTITIES			
		PLATE 4			
		PLATE 5			
		PLATE 6			
		PLATE 7			
		PLATE 8			
		PLATE 9			
		PLATE 10			
		PLATE 11			
		PLATE 12			
		PLATE 13			
		PLATE 14			
		PLATE 15			
		PLATE 16			
		PLATE 17			
		PLATE 18			
		PLATE 19			
		PLATE 20			
		PLATE 21			
		PLATE 22			
		PLATE 23			
		PLATE 24			
		PLATE 25			
		PLATE 26			
		PLATE 27			
		PLATE 28			
		PLATE 29			
		PLATE 30			
		PLATE 31			
		PLATE 32			
		PLATE 33			
		PLATE 34			
		PLATE 35			
		PLATE 36			
		PLATE 37			
		PLATE 38			
		PLATE 39			
		PLATE 40			
		PLATE 41			
		PLATE 42			
		PLATE 43			
		PLATE 44			
		PLATE 45			
		PLATE 46			
		PLATE 47			
		PLATE 48			
		PLATE 49			
		PLATE 50			
		PLATE 51			
		PLATE 52			
		PLATE 53			
		PLATE 54			
		PLATE 55			
		PLATE 56			
		PLATE 57			
		PLATE 58			
		PLATE 59			
		PLATE 60			
		PLATE 61			
		PLATE 62			
		PLATE 63			
		PLATE 64			
		PLATE 65			
		PLATE 66			
		PLATE 67			
		PLATE 68			
		PLATE 69			
		PLATE 70			
		PLATE 71			
		PLATE 72			
		PLATE 73			
		PLATE 74			
		PLATE 75			
		PLATE 76			
		PLATE 77			
		PLATE 78			
		PLATE 79			
		PLATE 80			
		PLATE 81			
		PLATE 82			
		PLATE 83			
		PLATE 84			
		PLATE 85			
		PLATE 86			
		PLATE 87			
		PLATE 88			

RECORD DRAWING *Notes: To be*

DATA PROVIDED BY: _____

This sheet serves to certify that these Record Drawings are a true and accurate representation of the project as constructed.

CONTRACTOR: _____

BY: _____ TITLE: _____

DATE: _____

DATA TRANSFERRED BY: _____

COMPANY: _____

DATE: _____

Based on periodic field observations by the Engineer for an individual under his/her direct supervision, the Contractor-provided data appears to represent the project or construction.

DATA TRANSFER CHECKED BY: _____
 COMPANY: _____
 BY: _____ TITLE: _____
 DATE: _____

THIS DOCUMENT AND THE IDEAS INCORPORATED HEREIN, AS AN INSTRUMENT OF PROFESSIONAL SERVICE, IS THE PROPERTY OF AWWA AND IS NOT TO BE USED, IN WHOLE OR IN PART, FOR ANY OTHER PROJECT WITHOUT WRITTEN AUTHORIZATION OF AWWA.

PRO
CONSTRUCTION & SERVICE, INC.
 872 EAST 10TH AVE. SUITE 200
 ANCHORAGE, ALASKA 99501
 PHONE (907) 563-4923
 FAX (907) 563-3913
 LICENSE # NE000284

MUNICIPALITY	PERM SCALE 1/2" = 1'	DATE
WATER	VERT SCALE 1/2" = 1'	
RESERVOIR	PROJECT NO.: 00000007255	
KEY MAP		

QUALITY OF ANCH
% WASTE WATER
6 (SERVICE HIGH SCHOOL
P. NOTES, AND
DATE: 10/20/86
GNDX: SW2337
(WTR)

STORAGE UTILITY	LEGEND	SHEET 2	OF 8
--------------------	--------	---------	------

[illegible]

AC	ASBESTOS CEMENT
AC	ASPHALT CONCRETE
ALC	ALGEBRAIC DIFFERENCE
AW	WATER SUPPLY AND WASTEWATER
BOH	BOTTOM OF HOLE
BOB	BOTTOM OF PIPE
BV	BUTTERFLY VALVE
BVC	BEGIN VERTICAL CURVE
BVC	BEGIN VERTICAL CURVE - STATION
CB	CURB CUT
CC	CAST IRON PIPE
CE	CEMENT
CE	CEMENT
DP	DUPLEX IRON PIPE
EG	EXISTING GROUND
EL	ELEVATION
ELEV	ELEVATION
EDP	EDGE OF PAVEMENT
EVCE	END VERTICAL CURVE
EVCE	END VERTICAL CURVE - STATION

[illegible]

SOIL	ABBREVIATIONS
GW	WELL GRADED GRAVEL
GP	POORLY GRADED GRAVEL
GM	SILT CLAY
GC	CLAYEY GRAVEL
SW	WELL GRADED SAND
SM	POORLY GRADED SAND
SC	SILT SAND
ML	CLAYEY SAND
CL	CLAYEY SILT
OL	ORGANIC CLAY
OH	ORGANIC SILT
CH	ORGANIC CLAY
PT	PEAT

EXISTING	PROPOSED	DESCRIPTION
—	—	CENTERLINE GRADE
—	—	LEFT PROPERTY LINE GRADE
—	—	RIGHT PROPERTY LINE GRADE
—	—	INSULATION
—	—	WATER LEVEL
—	—	UTILITY MAIN
—	—	STORM DRAIN/SEWER MANHOLE

DATE: 10/2/2017	WTR
ERT STAGE: N/A	0000007096 (WTR)

HORIZONTAL CONTROL STATEMENT

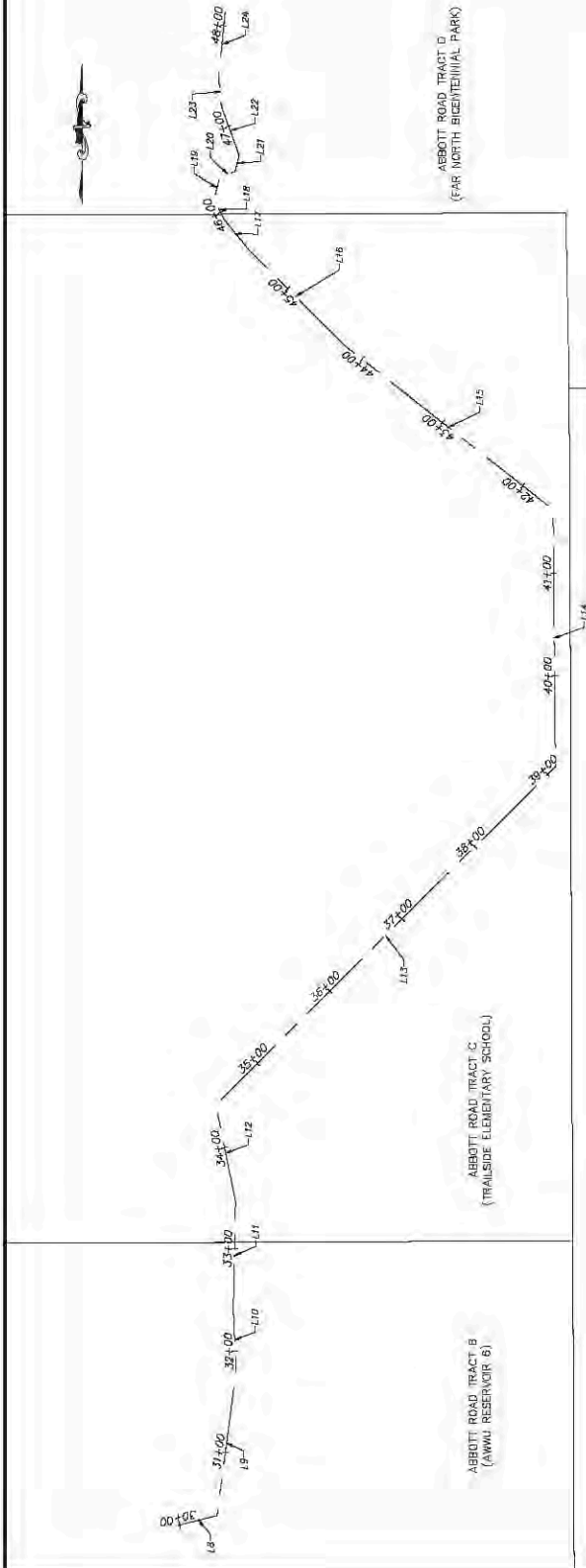
- [illegible]

VERTICAL CONTROL STATEMENT

1. ELEVATIONS ARE BASED ON THE M.G.A. VERTICAL CONTROL NETWORK. THE DATUM IS MEAN SEA LEVEL, 02448 1972. ADJUSTMENT AND THE UNIT OF MEASURE IS U.S. SURVEY FEET.
2. THE BASIS OF ELEVATION IS 480.1' (1526.2') A TOP RUN BOLT OF INVARIANT, WITH AN ELEVATION OF 373.80' AT THE EAST SIDE OF SHAHJAHAN DRIVE NEAREST TO CORBY ROAD INTERSECTION AND 348.58' (1062.60'), BRASS CAP AT INTERSECTION OF CHAN AND CHAN (1762.00). BRASS CAP IS LOCATED IN GRASS BERM, 10' FROM CHAN ROAD, 10' FROM CORBY ROAD, AS SHOWN ON PL 2013-21.
3. ALL ELEVATIONS ON HORIZONTAL CONTROL POINTS WERE TO BE FIELD-ADJUSTED BEFORE THEY WERE USED.

NOTES

1. FIELD SURVEY PERFORMED BY RECON, LLC ON APRIL 5TH AND 6TH, 2016.
2. ALL DIMENSIONS AND COORDINATES SHOWN ARE IN U.S. SURVEY FEET UNLESS OTHERWISE NOTED.



NUMBER	LENGTH	RADIUS	LINE/CHORD BEARING	ALIGNMENT				START CASTING	END CASTING	END EASTING	END NORTHING
				START	STOPPING	START	STOPPING				
L18	37.72		N75° 23' 00"E	317366.87		305608.00		311576.04		306294.80	
L19	143.32		N70° 29' 30"E	311376.06		305620.45		311518.17		306434.47	
L20	53.11		N69° 42' 35"N	316158.17		305633.43		311577.81		306546.61	
L21	105.29		N61° 11' 32"E	311572.21		305649.41		311642.91		306645.81	
L22	36.60		N61° 26' 57"N	311655.91		305642.61		311777.66		306824.59	
L23	424.18		N45° 37' 22"E	311777.66		305643.59		312108.20		306954.34	
L24	224.18		N70° 28' 12"E	312108.20		305651.35		312539.35		306961.26	
L25	296.43		N61° 47' 44"N	312535.35		305653.39		312950.42		307446.63	
L26	133.40		N44° 51' 25"E	312950.42		305748.53		312874.09		308264.55	
L27	36.28		N39° 33' 53"N	312951.99		305765.45		312843.72		308357.69	
L28	21.01		N27° 14' 14"N	312843.72		305761.66		312661.86		308382.07	
L29	94.59		N42° 34' 17"E	312661.86		305812.07		312495.02		308427.47	
L30	13.77		N73° 11' 57"E	312495.02		305827.77		312268.97		308464.23	
L31	16.69		N44° 53' 20"E	312268.97		305838.20		312103.00		308496.45	
L32	59.64		N20° 13' 27"N	312103.00		305846.42		312223.36		308526.03	
L33	33.90		N46° 41' 28"N	312223.36		305852.90		312328.14		308584.36	
L34			N46° 41' 13"E	312328.14		305852.90		312064.76		308587.47	

LEGEND

FOUND BRASS CAP MONUMENT

FOUND ALUMINUM CAP MONUMENT

FOUND PLASTIC CAP MONUMENT

CONSTRUCTION &

RECORD DRAWING	State-To-ha [land not on original information upon revision]	DATE OF COMPLETION

- | | | | |
|----------------------------|--|---|--|
| RECORD DRAWING | | THIS DOCUMENT AND THE IDEAS INCORPORATED HEREIN ARE THE PROPERTY OF AMCA INTERNATIONAL, INC. AND ARE NOT TO BE REPRODUCED OR TRANSMITTED IN ANY FORM OR BY ANY MEANS, ELECTRONIC OR MECHANICAL, INCLUDING PHOTOCOPYING, RECORDING, OR BY ANY INFORMATION STORAGE AND RETRIEVAL SYSTEM, WITHOUT THE WRITTEN PERMISSION OF AMCA INTERNATIONAL, INC. | |
| DATE: _____ | | DATE: _____ | |
| BY: _____ | | BY: _____ | |
| FOR: _____ | | FOR: _____ | |
| TITLE: _____ | | TITLE: _____ | |
| DATA TRANSFERRED BY: _____ | | DATA TRANSFERRED BY: _____ | |
| DATE: _____ | | DATE: _____ | |
| BY: _____ | | BY: _____ | |
| FOR: _____ | | FOR: _____ | |
| CONTRACTOR: _____ | | CONTRACTOR: _____ | |

VERIFY THIS BAR REPRESENTS IF BAR IS NOT ONE HALF

[illegible]

VERIFY THIS BAR REPRESENTS

ORIGINAL DOCUMENT					
DATE	TIME	RECORD NO.	DATA	REV	DATE
			TELEPHONE		
			ELECTRIC		
			CABLE TV		
			TRAFFIC SIGNAL		
			DESIGN		
			QUANTITIES		
			MATERIAL SPEC		

VERIFY THIS BAR REPORT

DATE	TIME	LOCATION	BY	DATE	TIME	LOCATION	BY
		BASE				TELEPHONE	
		TOPOGRAPHY				ELECTRIC	
		PROFILE				CABLE TV	
		SEWANTARY SEWER				TRAFFIC	
		STORM SEWER				DESIGN	
		WATER				CLIMATE	
		GAS				MUNICIPAL	
						PLANT CHEMICAL	



DECEASED/NE DOMINICANTE

THIS DOCUMENT AND THE REUSE OF DOCUMENTS
EAS INCORPORATED HEREIN IS AN INSTRUMENT OF PROFESSIONAL SERVICE, IS THE PROPERTY OF AWWA AND IS NOT TO BE USED, IN WHOLE OR IN PART, FOR ANY OTHER PROJECT WITHOUT WRITTEN AUTHORIZATION OF AWWA.

Information on the use of the instrument is available at <http://www.ips.ac.uk>

ER CHECKED BY: _____
TITLE: _____

C. Hobbie-To be killed not necessary

3. Based on performance of the Engineer (or its supervision), it appears to be constructed.

DATA TRANSFER COMPANY: _____

BY: _____

DATE: _____

RECORD DRAWMN

RECORD DRAWING

DATA PROVIDED BY: _____

This shall serve to certify that _____

Drawings are a true and accurate _____

representation of the project.

CONTRACTOR: _____

BY: _____ TITLE: _____

DATE: _____

DATA TRANSFERRED BY: _____

COMPANY: _____

DATE: _____

[illegible][illegible]

IF BAR IS NOT ONE HALF

[illegible]

PRESENTS

REV		DATE
1	0	

VERIFY THIS BAR REPORT

[illegible]

RESTORATION SCHEDULE		
FROM STATION	TO STATION	NOTES
08+71	10+73	R/R ASPHALT (140 SY), SEED [SCH. A] & SUPPLEMENTAL TOPSOIL (20.0 MSF)
10+73	15+08	SEED [SCH. C] & SUPPLEMENTAL TOPSOIL (16.0 MSF)
15+08	16+79	SEED [SCH. C] & SUPPLEMENTAL TOPSOIL (3.0 MSF)
16+79	24+23	SEED [SCH. C] & SALVAGED ORGANIC TOPSOIL (41.0 MSF)



1. CONTRACTOR IS RESPONSIBLE FOR MAINTENANCE AND DESTRUCTION OF HAIL ROADS TO INCLUDE THE STREET, PATWAY, AND ALL OTHER DISTURBED ITEMS. THE CONTRACTOR SHALL BE RESPONSIBLE FOR THE MAINTENANCE AND RESTORATION OF THE RESTORATION SCHEDULE OF THESE PLANTS MAINTENANCE AND RESTORATION TO THIS CONTRACT.
2. THE QUALITY GUARANTEED ON THE RESTORATION SCHEDULE FOR R/A ASPHALT IS PHOTOGRAPHY AND VISUALLY EXISTING CONDITION OF LANDSCAPE IMPROVEMENTS BEING INSTALLED. THE CONTRACTOR SHALL BE RESPONSIBLE FOR LANDSCAPE MAINTENANCE BEHIND THE SCHEDULING AND TO ENSURE SUFFICIENTLY GOOD QUALITY PLANTS, ENGINEER TREES, SHRUBS AND OTHER LANDSCAPE IMPROVEMENTS BESIDES GRASS SHALL BE PROTECTED IN-PLACE OR REPLACED AT THE CONTRACTORS EXPENSE.
3. TYPICAL SECTION FOR R/A ASPHALT SURFACING IS 2" CLASS C PAVEMENT AND 4" LEVELING COURSE.
4. MATERIALS IDENTIFIED ON THE RESTORATION SCHEDULE FOR SEED (ALL TYPES) AND ALL PLANTS IDENTIFIED ON THE RESTORATION SCHEDULE TO BE PLANTED BY THE CONTRACTOR SHALL BE PLANTED IN A MINIMUM QUANTITY TO BE PLANTED WHICH EXCEED THESE, AND WILL BE CONSIDERED INCIDENTAL TO THE CONTRACT.
5. PRIOR TO SEEDING, THE CONTRACTOR SHALL PREPARE A LANDSCAPE PLAN AND SUBMIT IT TO THE ENGINEER FOR APPROVAL. THE LANDSCAPE PLAN SHALL COVER PLANTING AND MAINTENANCE OF SEEDING OPERATIONS FOR SCHEDULE A.
6. TERRACE PROTECTION SYSTEM SHALL BE UTILIZED FOR WATERING OF ALL SEED NOT BE ALLOWED DUE SEEDING HAS BEEN PLACED. THE IRRIGATION SYSTEM IS INCIDENTAL TO CLASS 75-D "SEEDING".
7. TEMPORARY STABILIZATION, MAINTENANCE, AND REPAIR OF STABILIZATION MEASURES

[illegible]

RECORD DRAWING Note: To be filed as an original drawing upon project completion.

1. DATA REQUESTED BY: _____ DATE: _____

2. DATA TRANSFERRED BY: _____ DATE: _____

3. SOURCE: _____

4. ENGINEER (or individual under his/her direct supervision) who prepared this drawing and represents the project as constructed. _____

5. CONTRACTOR: _____

6. TITLE: _____

7. DATE: _____

8. COMPANY: _____

9. DATE: _____

10. TITLE: _____

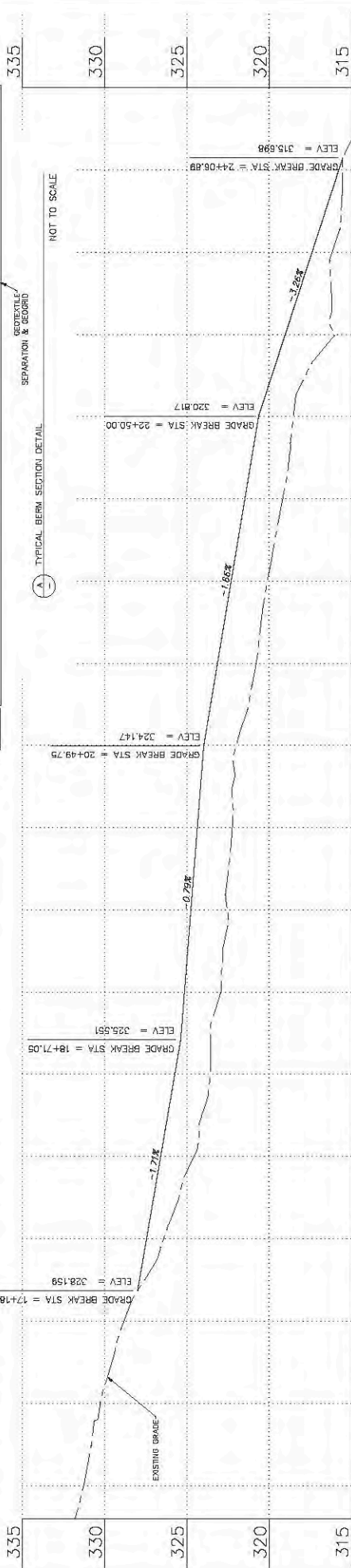
THIS DOCUMENT AND THE IDEAS INCORPORATED HEREIN, AS AN INSTRUMENT OF PROFESSIONAL SERVICE, IS THE PROPERTY OF AIAA AND IS NOT TO BE USED, IN WHOLE OR IN PART, FOR ANY OTHER PROJECT WITHOUT WRITTEN AUTHORIZATION OF AIAA.

PRO
COMMERCIAL & INDUSTRIAL SERVICES, INC.
 912 EAST 19TH AVE, SUITE 200
 ANCHORAGE, ALASKA 99501
 PHONE: (907) 561-4237
 FAX: (907) 561-3813
 LICENSE # AC12394

CRASH TALK

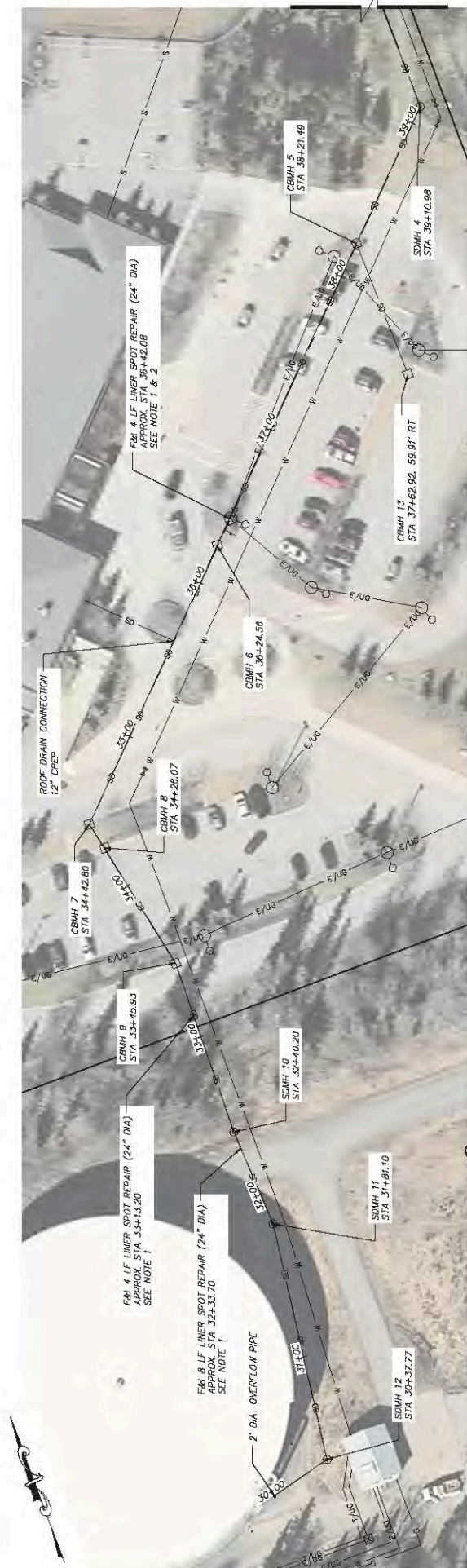
MUNICIPAL WATER & SEWER	RESERVOIR	WORK LIMIT	HORIZ SCALE 1:100	DATE
			VERT SCALE 1/4"	PROJ. ID: 0000007055

CITY OF ANCHORAGE WASTEWATER UTILITY (SERVICE HIGH SCHOOL) DRAINAGE	1: 10/2018 SW 2336 GRID: SW 2337	SHEET 5 of 8
---	--	-----------------

[illegible]

- [illegible]

[illegible]



NOTES

- LOCATION AND LENGTH OF SPOT REPAIRS TO BE FIELD INSTALLED BY CCTV AND APPROVED BY THE ENGINEER IN THE FIELD PRIOR TO INSTALLATION. SPOT REPAIRS TO BE PERFORMED IAW MASS 55.22 AND THE SPECIAL PROVISIONS.
- SPOT REPAIR NAME: SPOT REPAIR 34+42.0M IS TO BE INSTALLED AROUND A LIGHT DAMAGE TO THE ASPHALT SURFACE. THE SPOT REPAIR SHALL BE APPLIED IN SUCH A WAY THAT THE DAMAGE IS COMPLETELY SEALED OFF AND THE STORM DRAIN IS WATER TIGHT.
- CLEANING OF THE STORM DRAIN SHALL BE PERFORMED IAW MASS 55.24.
- PREPARE STORM PIPE FOR LINING.
- SEEDING AND RESTORATION OF DISTURBED AREAS IS INCIDENTAL TO MORE WORK. SEE SECTION 600 FOR "WORK UNDER EXISTING PAVEMENT" FOR DETAILS.

[illegible]

RECORD DRAWING Note: To be filed out on original drawings upon project completion.

DATE OF RECORD DRAWS: _____
 DRAWN BY: _____
 CHECKED BY: _____
 ENGINEER FOR AN INDIVIDUAL UNDER HIS/HER DIRECT SUPERVISION: _____
 This shall serve to certify that these Record Drawings are true and correct as they represent representation of the product as constructed.
 CONTRACTOR: _____ TITLE: _____
 DATE: _____ DATA TRANSFERRED BY: _____
 COMPANY: _____ DATE: _____
 DATE: _____ TITLE: _____
 DATE: _____

THIS DOCUMENT AND THE IDEAS INCORPORATED HEREIN, AS AN INSTRUMENT OF PROFESSIONAL SERVICE, IS THE PROPERTY OF AWWA AND IS NOT TO BE USED, IN WHOLE OR IN PART, FOR ANY PROJECT WITHOUT WRITTEN AUTHORIZATION OF AWWA.

PBS



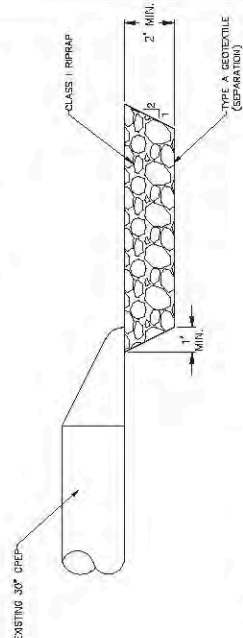
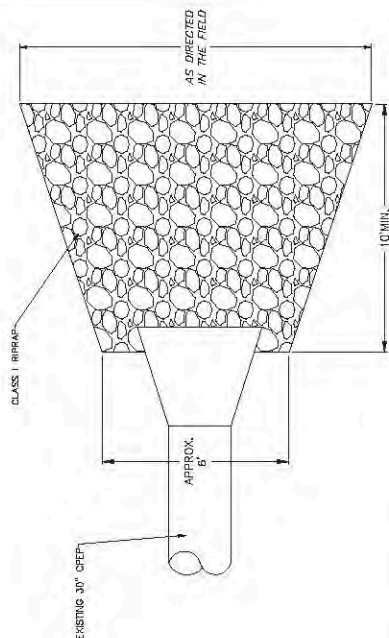
MUNICIPALITY OF ANCHORAGE WATER & WASTEWATER UTILITY RESERVOIR 6 (SERVICE HIGH SCHOOL) DRAINAGE		STORM DRAIN PLAN	
DRAWN: SCALLES 1/20 CHECKED: SCALLES 1/24 PROJECT: 00-000927/556 (WIR)	DATED: 10/20/08 GRID: SW 2337	SHEET	



ENERGY, DESPANDER SHALL BE STAKED AND APPROVED IN FIELD PRIOR TO CONSTRUCTION. EXISTING TREES TO BE PROTECTED IN PLACE. PROTECTING OF BRANCHES SHALL BE ALLOWED UNLESS OTHERWISE DIRECTED BY THE ENGINEER. THE EXISTING TRAIL SHALL BE IN THE MASS AND SPECIAL PROVISIONS SECTION 20.32.

OTHER PERMANENT CONTROL MEASURES USED TO KEEP FLOW FROM ENTERING THE EXISTING TRAIL MUST BE APPROVED BY THE ENGINEER IN THE FIELD.

EXISTING ORANGE CHANNEL TO BE LINED WITH COBBLES FOR A MINIMUM OF 25 FEET AS DIRECTED BY THE ENGINEER IN THE FIELD. HIS WORK SHALL BE COMPLETED WITHIN 10 DAYS OF THE DATE OF THE ORDER BEING ISSUED. THE EXISTING TRAIL LINE TO MINIMIZE DISTURBANCE.



ENERGY DISSIPATER SECTIONS

NOT TO SCALE

[illegible]

