



Municipality of Anchorage, Alaska
Parks & Recreation Department

632 W. 6th Avenue, Suite 630
P.O. Box 196650
Anchorage, AK 99519
Tel 907-343-4355

URL www.muni.org/departments/parks



MEMORANDUM

Date: October 6, 2017

To: Parks & Recreation Commission

Cc: Josh Durand, Parks Superintendent

From: Parks & Recreation Dept.

Project: **PRC 2017-32** AMATS: Bicycle Plan Implementation -- Mountain View Drive Pathway Project—Louie G. Mizelle Memorial Park Segment

PROJECT OVERVIEW

The following information is provided by PTS, Inc., project manager.

The AMATS: Bicycle Plan Implementation – Mountain View Drive Pathway Project (Project No.: TA17004/CFHWY00259) proposes to construct a 10-foot-wide asphalt multi-use pathway along the north side of Mountain View Drive, between North Bliss Street and North Lane Street in the Mountain View area of Anchorage. The proposed project would also realign an existing pathway within Louie G. Mizelle Park, between North Lane Street and North Bunn Street.

Purpose and Need

The purpose of this project overall is to increase bicycle facilities and the use of bicycles for transportation in accordance with Anchorage Metropolitan Area Transportation Solution's (AMATS) *Anchorage Bicycle Plan* (2010). The project would also address identified connectivity gaps in the plan's proposed bicycle network by constructing an important missing east-west connection between the Ship Creek Trail and the Glenn Highway Multi-Use Pathway. The connection is needed to increase cyclist safety in the area, which is compromised because currently bicycles must share the existing sidewalk with pedestrians, or the roadway with vehicles.

Proposed Action

In addition to the proposed pathway construction and realignment, other activities of the project may include the following (as needed):

- Drainage improvements (e.g., ditching)
- Installing or upgrading curb ramps to meet Americans with Disabilities Act (ADA) requirements
- Signage and striping
- Vegetation clearing and grubbing
- Lighting improvements
- Utility relocations
- Landscaping
- Installing a 2-foot-wide concrete buffer between existing asphalt parking areas and the proposed pathway

Additional information is attached.

STAFF RECOMMENDATION

The Parks and Recreation Department requests that the Parks and Recreation Commission approve the attached resolution of support for the proposed pathway reconstruction and related modifications to Louie G. Mizelle Memorial Park, including restoration of disturbed areas as approved by Parks and Recreation Department, as part of the AMATS Bicycle Plan Implementation – Mountain View Drive Pathway Project.

Cc: Nichole Rehm, PTS
Carrie Connaker, Solstice Alaska Consulting, Inc.



Municipality of Anchorage, Alaska
Parks & Recreation Commission

632 W. 6th Avenue, Suite 630
P.O. Box 196650
Anchorage, AK 99519



Resolution No. 2017- 20

**Park & Pathway Modifications to Louie G. Mizelle Memorial Park as Part of AMATS
Bicycle Plan Implementation Project**

WHEREAS, the Anchorage Parks and Recreation Commission serves in an advisory capacity to both the Mayor and the Assembly; and

WHEREAS, the Anchorage Parks and Recreation Commission has the responsibility and duty to provide for the long term vision of our park system by ensuring that a balance of parks, natural resources, and recreation facilities provides for the health, welfare, and safety of all residents of the Anchorage Bowl; and

WHEREAS, Anchorage Metropolitan Transportation Solutions (AMATS) is proposing the Mountain View Drive Pathway Project to be constructed as an element implementing the *Anchorage Bicycle Plan* (2010) to improve safety and convenience for multimodal transportation in Anchorage; and

WHEREAS, a segment of the recommended bicycle pathway alignment would traverse Louie G. Mizelle Memorial Park consisting, in part, of public right-of-way used as park and not currently used for motorized vehicle traffic; and

WHEREAS, the project would replace an existing pathway with a new pathway meeting current multi-use pathway standards as well as current engineering standards for this type of non-motorized transportation facility, and would also result in improved sight lines in the park; now, therefore,

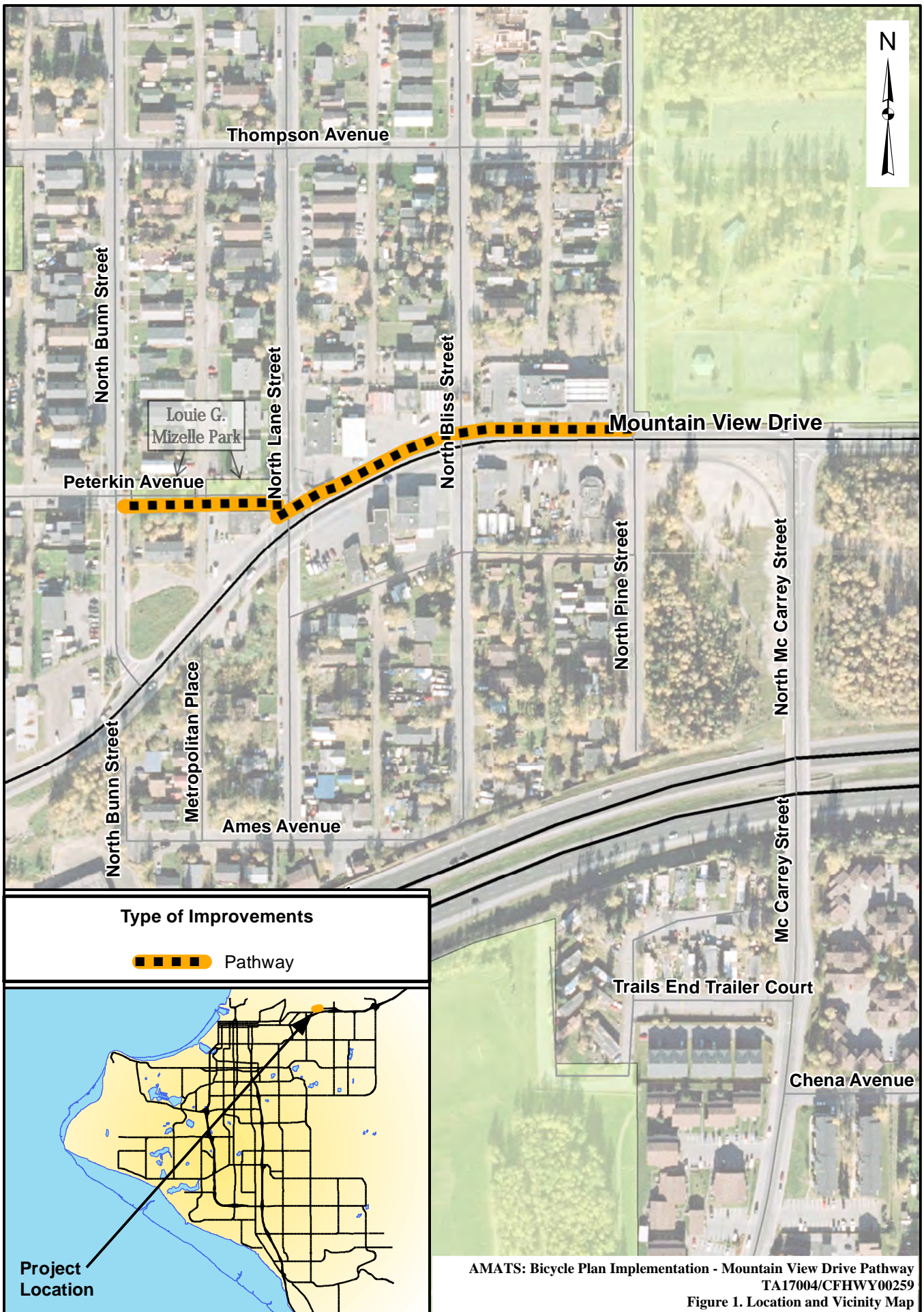
BE IT RESOLVED, that the Anchorage Parks and Recreation Commission supports the reconstruction of the pathway and related improvements in Mizelle Park as part of the Mountain View Drive Pathway project, in accordance with approved plans.

PASSED AND APPROVED by the Anchorage Parks and Recreation Commission this 12th day of October 2017.

Chair
Parks and Recreation Commission

ATTEST:

John H. Rodda, Director
Parks & Recreation Department



AMATS: Bicycle Plan Implementation - Mountain View Drive Pathway
TA17004/CFHWY00259
Figure 1. Location and Vicinity Map

FILE \\G:\WORKING\PROJECTS\JOBS\DATA\10136\12-AMATS-BIKE-PLAN\MOUNTAIN-VIEW-DRIVE-PATHWAY\00-CADD\01-WORKING-SET\01-LAYOUT\10136\12-TYPICAL-SECTIONS.DWG

DRAFTED

CHECKED

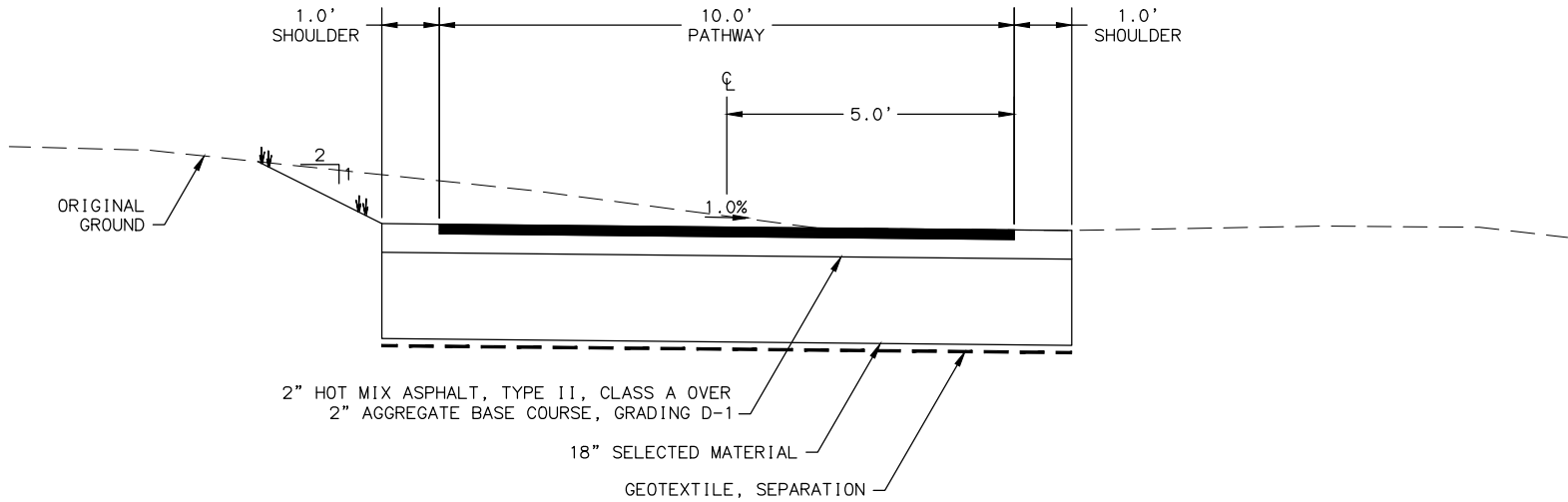
DESIGNED

1

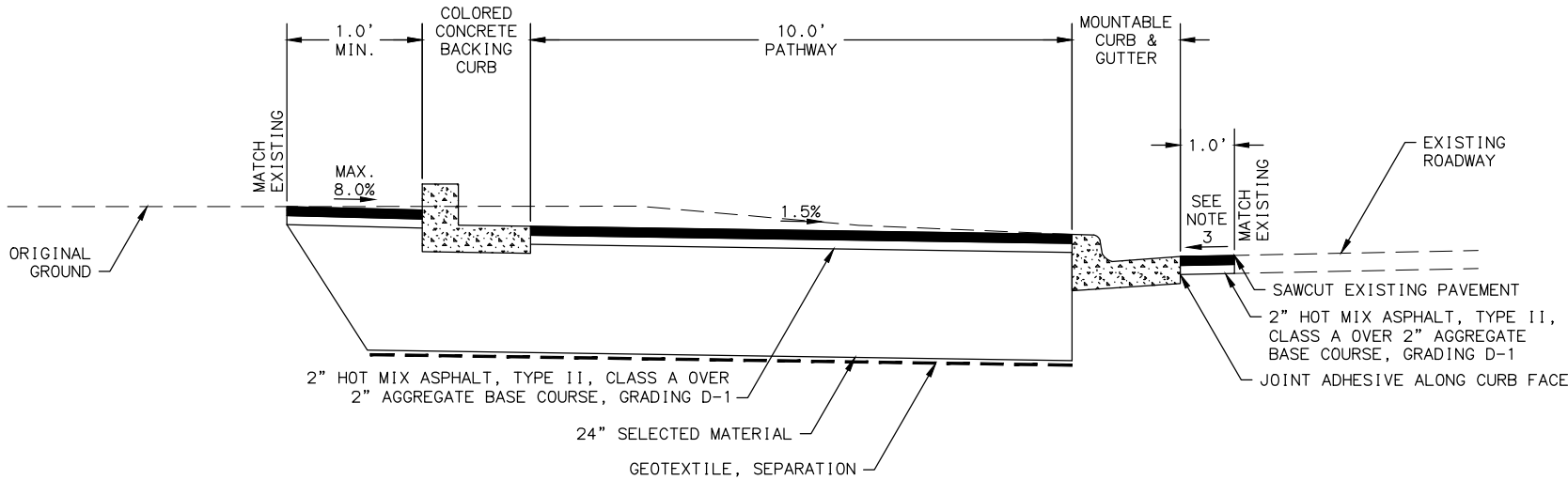
LAYOUT

DATE/TIME 9/18/2017 12:31 PM

NO.	DATE	REVISION	STATE	PROJECT DESIGNATION	YEAR	SHEET NO.	TOTAL SHEETS
			ALASKA	TA17004/CFHWY00259	2018	1	1



LOUIE G. MIZELLE MEMORIAL PARK PATHWAY

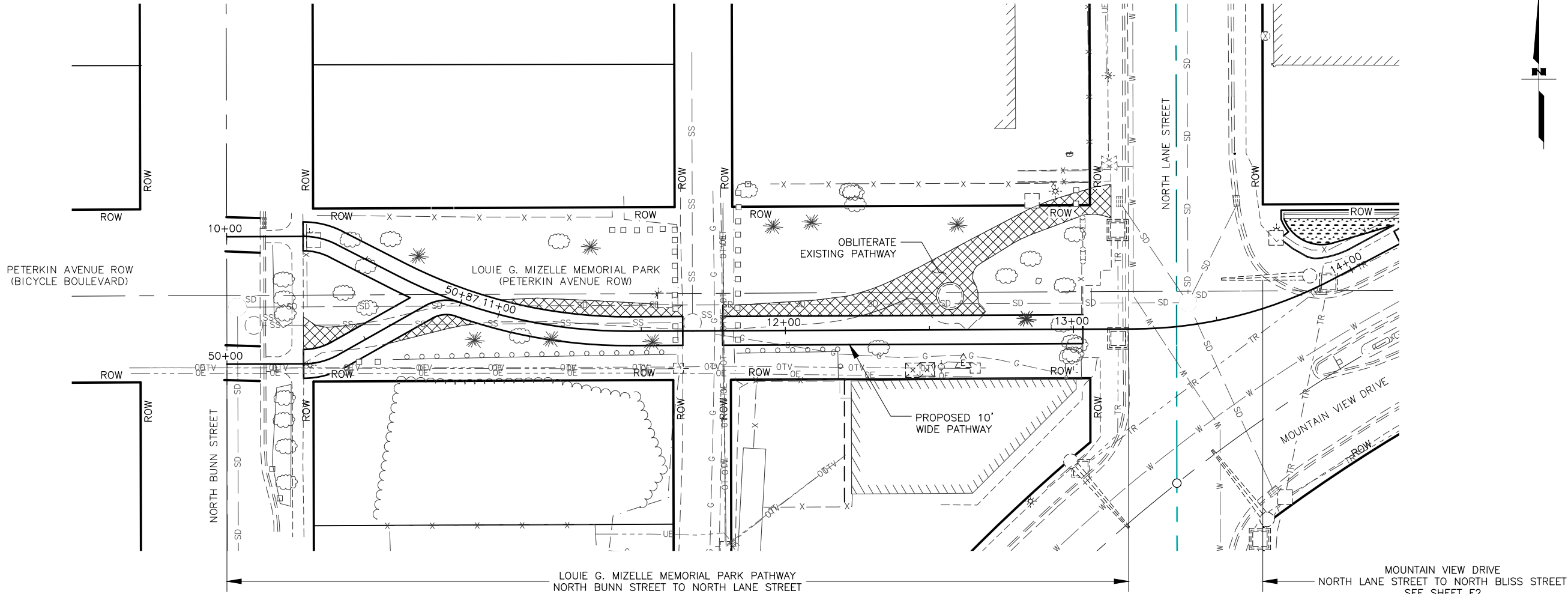


MOUNTAIN VIEW DRIVE PATHWAY



STATE OF ALASKA
DEPARTMENT OF TRANSPORTATION
AND PUBLIC FACILITIES
**AMATS: BICYCLE PLAN
IMPLEMENTATION
MOUNTAIN VIEW DRIVE PATHWAY**
TYPICAL SECTIONS

FILE \\G:\WORKING\PROJECTS\JOBS\DATA\10130-12-AMATS-BIKE-PLAN-MOUNTAIN-VIEW-DRIVE-PATHWAY\00-CADD\02-FIGURES\01-DSR\10130-12-PLAN-AND-PROFILE-DSR.DWG DATE/TIME 9/18/2017 12:31 PM [LAYOUT] F1 DESIGNED CHECKED DRAFTED



SHEET NO.	TOTAL SHEETS
F1	F2
STATE	YEAR
ALASKA	2018
PROJECT DESIGNATION	
TA17004/ CFHWY00259	
NO.	REVISION
DATE	
NO.	REVISION
DATE	
NO.	REVISION
DATE	



CRW ENGINEERING GROUP, LLC 3940
ARCTIC BLVD. SUITE 300
ANCHORAGE, ALASKA 99503
(907) 562-3252
#AECL862-AK

STATE OF ALASKA
DEPARTMENT OF TRANSPORTATION
AND PUBLIC FACILITIES

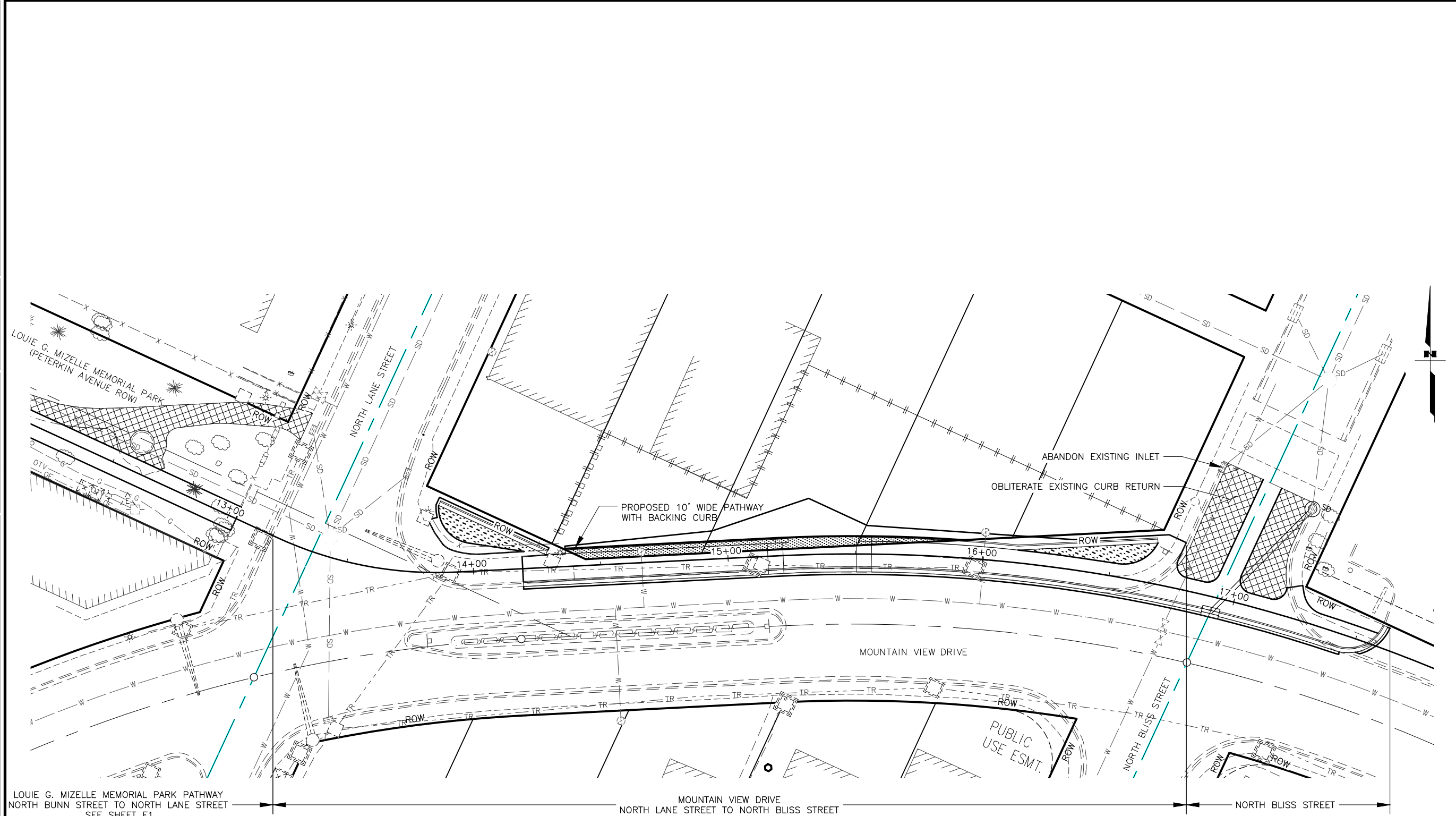
AMATS: MOUNTAIN
VIEW DRIVE PATHWAY
RECONSTRUCTION

PRELIMINARY PLANS

FILE \\GRWENG-COM\PROJECTS\JOBS\DATA\10130-12-AMATS-BIKE-PLAN-MOUNTAIN-VIEW-DRIVE-PATHWAY\00-CADD\02-FIGURES\01-DSR\10130-12-PLAN-AND-PROFILE-DSR.DWG

DATE/TIME 9/18/2017 12:31 PM [LAYOUT] F2

DESIGNED
CHECKED
DRAFTED



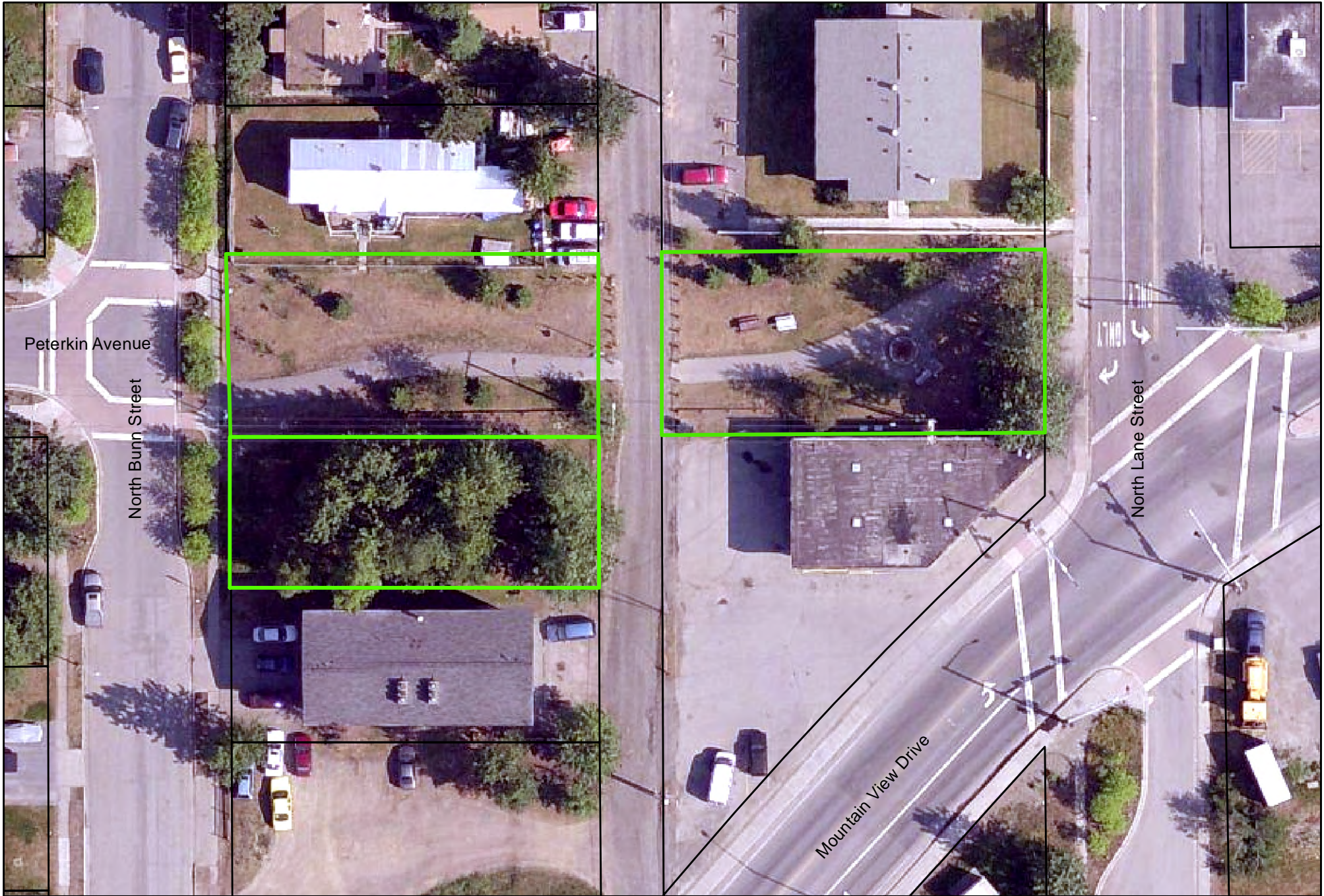
SHEET NO.	TOTAL SHEETS
F2	F2
STATE	YEAR
ALASKA	2018
PROJECT DESIGNATION	
TA17004/ CFHWY00259	
NO.	REVISION
DATE	
NO.	REVISION
DATE	
NO.	REVISION
DATE	

CRW ENGINEERING GROUP, LLC 3940
ARCTIC BLVD. SUITE 300
ANCHORAGE, ALASKA 99503
(907) 562-3252
#AECL882-AK

STATE OF ALASKA
DEPARTMENT OF TRANSPORTATION
AND PUBLIC FACILITIES

AMATS: MOUNTAIN
VIEW DRIVE PATHWAY
RECONSTRUCTION

PRELIMINARY PLANS



Peterkin Avenue

North Bunn Street

North Lane Street

Mountain View Drive

 Park Boundary

Louie G. Mizelle
Memorial Park

