

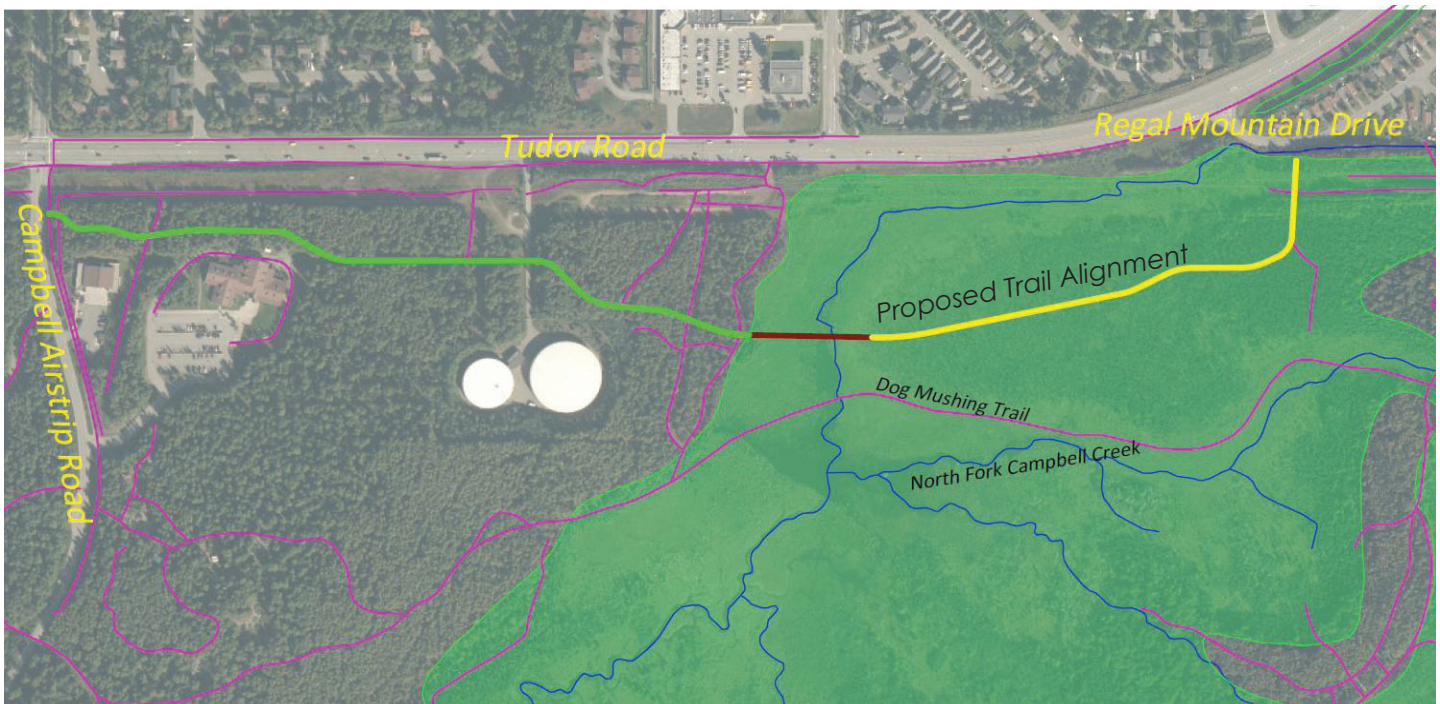
# North East Trail Connector Phase II

## PROJECT BACKGROUND:

The Chugach Foothills community has expressed a safety concern over the lack of a safe, accessible, east-west pedestrian and bicycle route near the Tudor Road and Muldoon Road curve just east of Campbell Airstrip Road. MOA Parks & Recreation has developed a phased solution to establish an east-west trail in the Far North Bicentennial Park south of Tudor. Phase 1 is completed connecting Klutina Drive to Regal Mountain Drive. Phase 2 will connect Regal Mountain Drive to the trail at Campbell Airstrip Road.

The MOA Parks & Recreation Department received Federal Highway Administration (FHWA) funding through Anchorage Metropolitan Area Transportation Solutions (AMATS) for design in 2019. The earliest construction is anticipated is 2020 for Phase II of the North East Trail Connector project.

**The project is just getting started; contact Van Le at [vle@rmconsult.com](mailto:vle@rmconsult.com) to get involved!**



## CONTACT:



### MOA Parks & Recreation

Taylor Keegan, Project Manager  
[taylor.keegan@anchorageak.gov](mailto:taylor.keegan@anchorageak.gov)  
343-4518

### R&M Consultants, Inc.

Van Le, AICP Planning & Public Involvement  
[vle@rmconsult.com](mailto:vle@rmconsult.com)  
646-9659