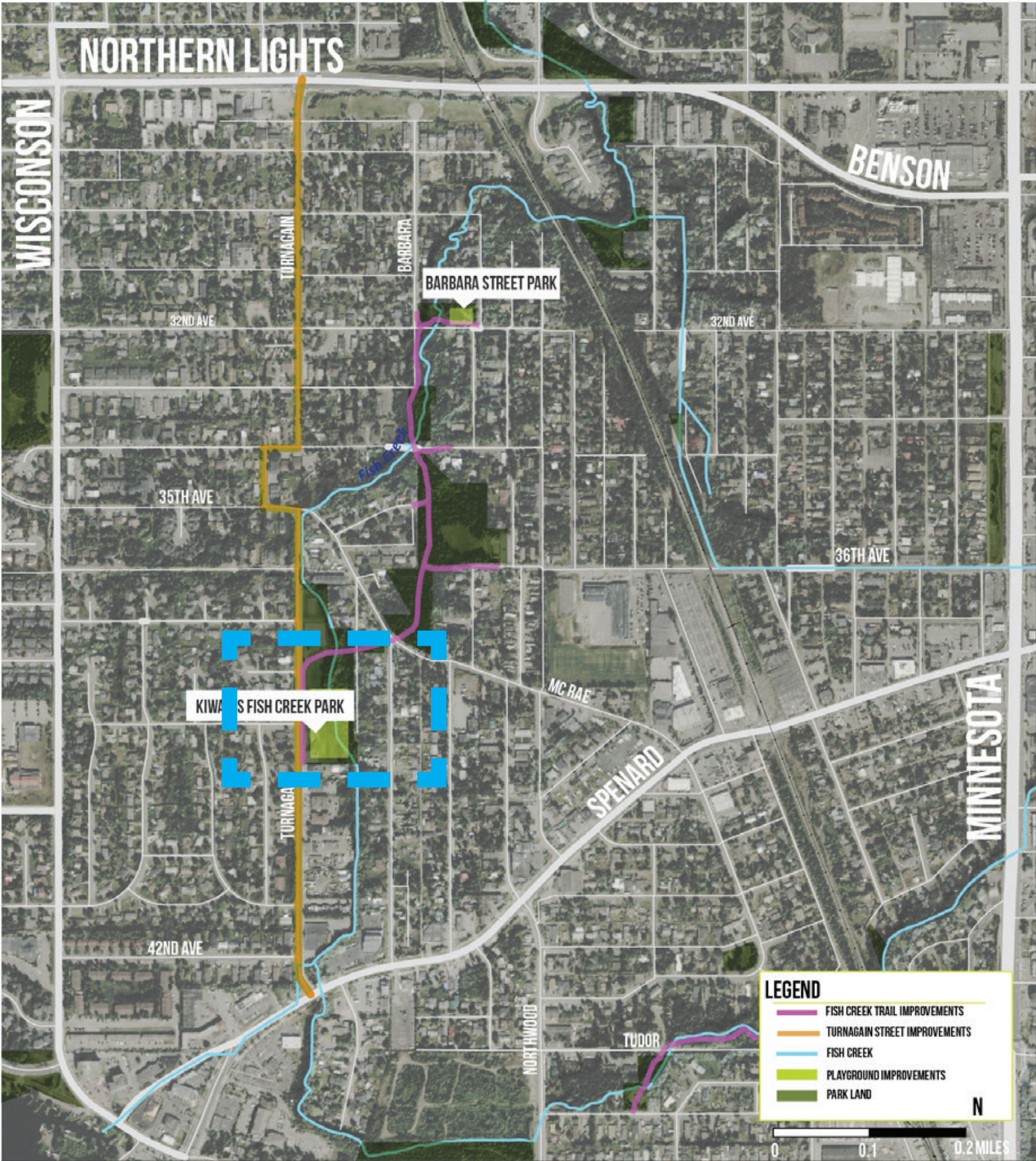


# KIWANIS FISH CREEK PLAYGROUND



## 2016 FUNDING:

- 27K DONOR MATCH
- 65K RASUMSON CLEAN + GREEN
- 120K RASUMSON ACCESSIBILITY FUNDS
- 20K REITMAN CHARTABLE FUND
- 6.2K STATE GRANT FUNDS

\$238K

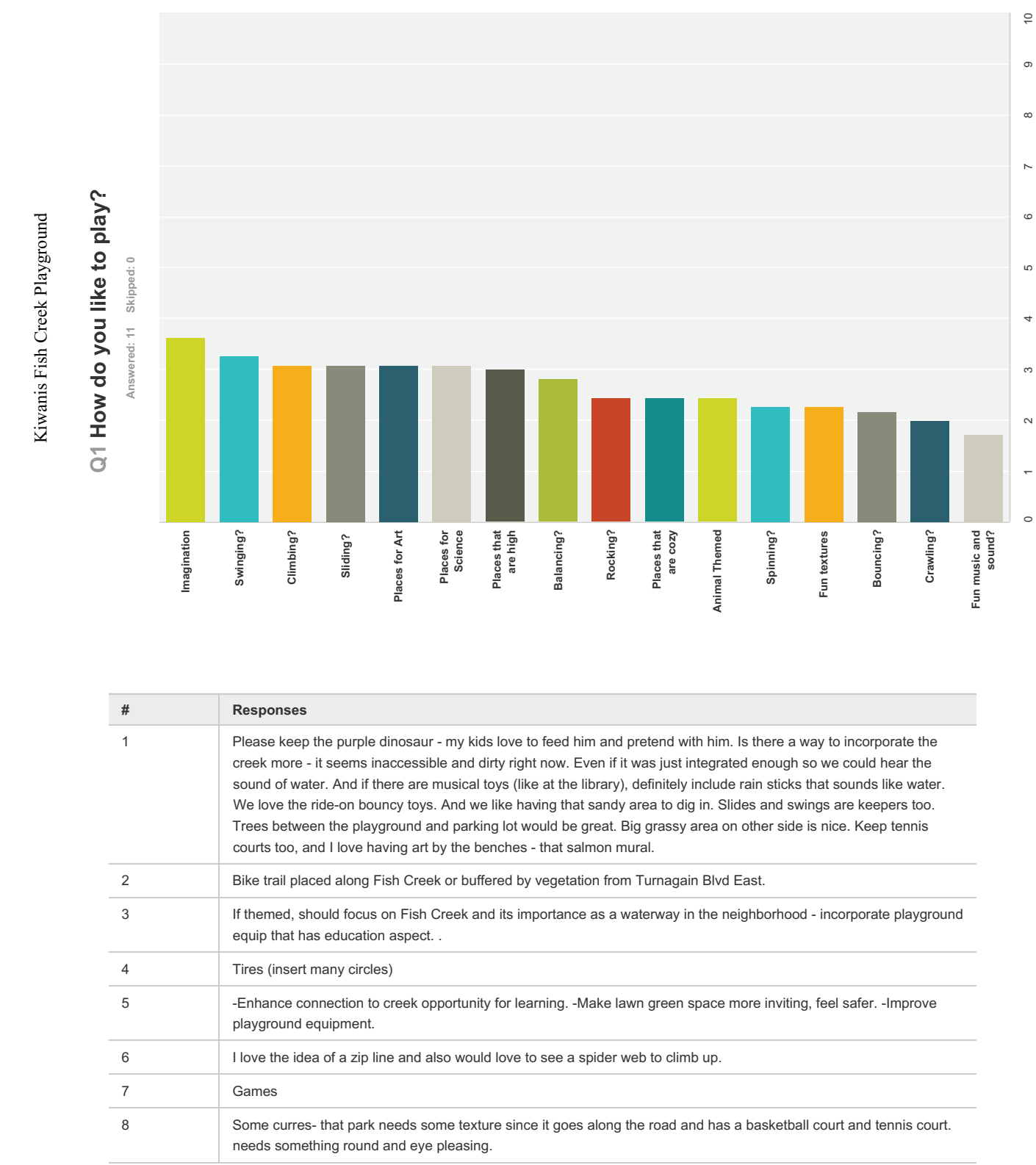
## STRENGTHS:

- PURPLE DINOSAUR
- CONNECTS TO CREEK
- GREENBELT IS REALLY NICE THROUGH THE FORESTED AREA, SPECIFICALLY BIKING THROUGH THE NATURAL AREAS
- AMPLE PARKING
- DIVERSE USERS
- PRESERVE THE ART ALONG THE BENCHES-LIKE THE WALL, BUT IT COULD BE IMPROVED ON
- GIRLSGOUTS AS STAKEHOLDERS

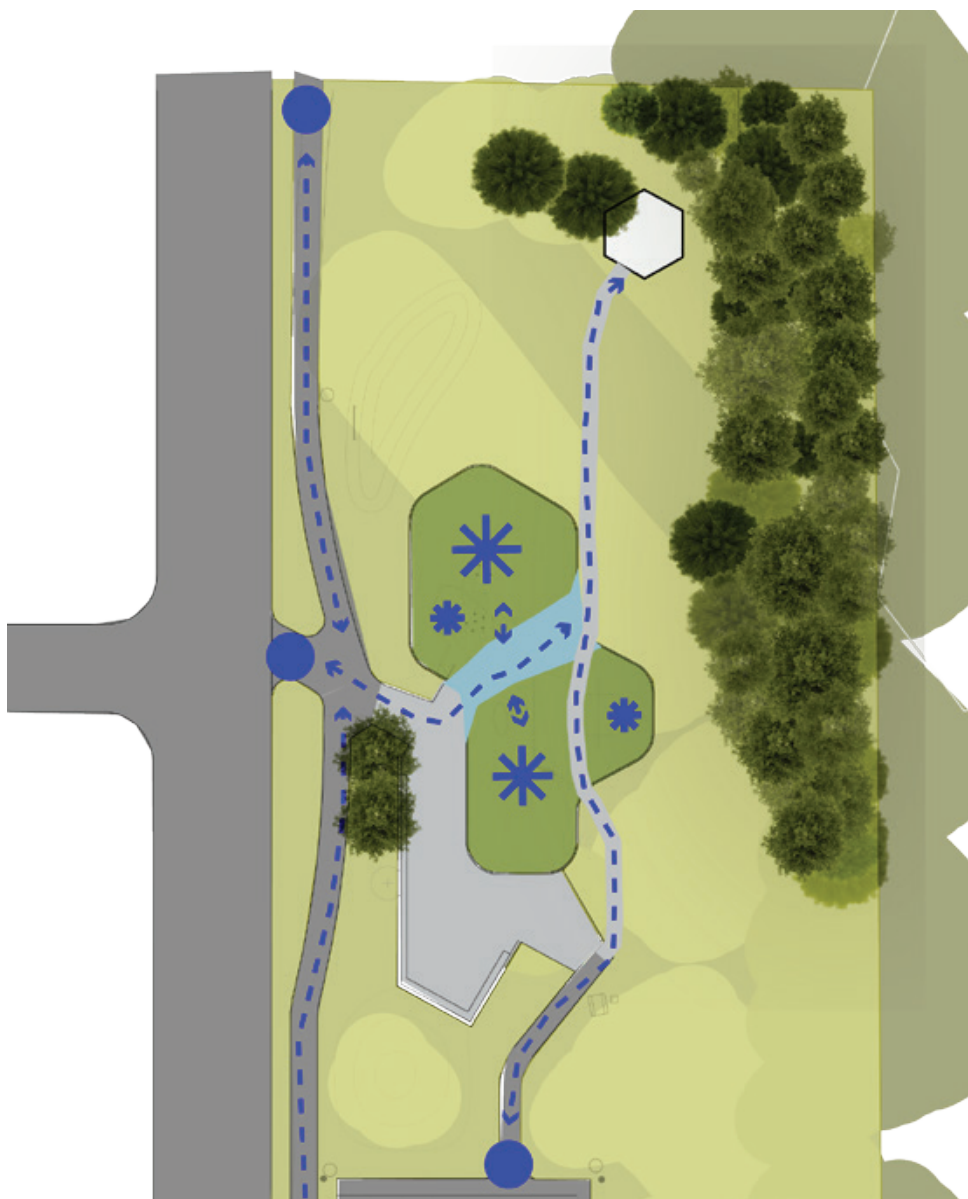
## WEAKNESSES:

- ROAD EDGE, PLEASE WORK WITH ROAD FOLK
- POOR ALONG ROAD EDGE- NEEDS MORE TREES
- OPEN GRASSY AREA RARELY GETS USED
- PLAY EQUIPMENT AND SURFACING, GRASS GROWING IN PLAY AREA
- CONNECTION FROM MCRAY IN PARK IS “SPOOKY”
- INVASIVE PLANT MATERIAL- PRUNUS SP.
- THE AREA WITH WALL AND ART IS NOT A PLAZA THAT DRAWS FOLKS IN, (COULD WE GET AN ARTIST TO COME IN AND ENHANCE AREA?)

## SURVEY RESPONSES:

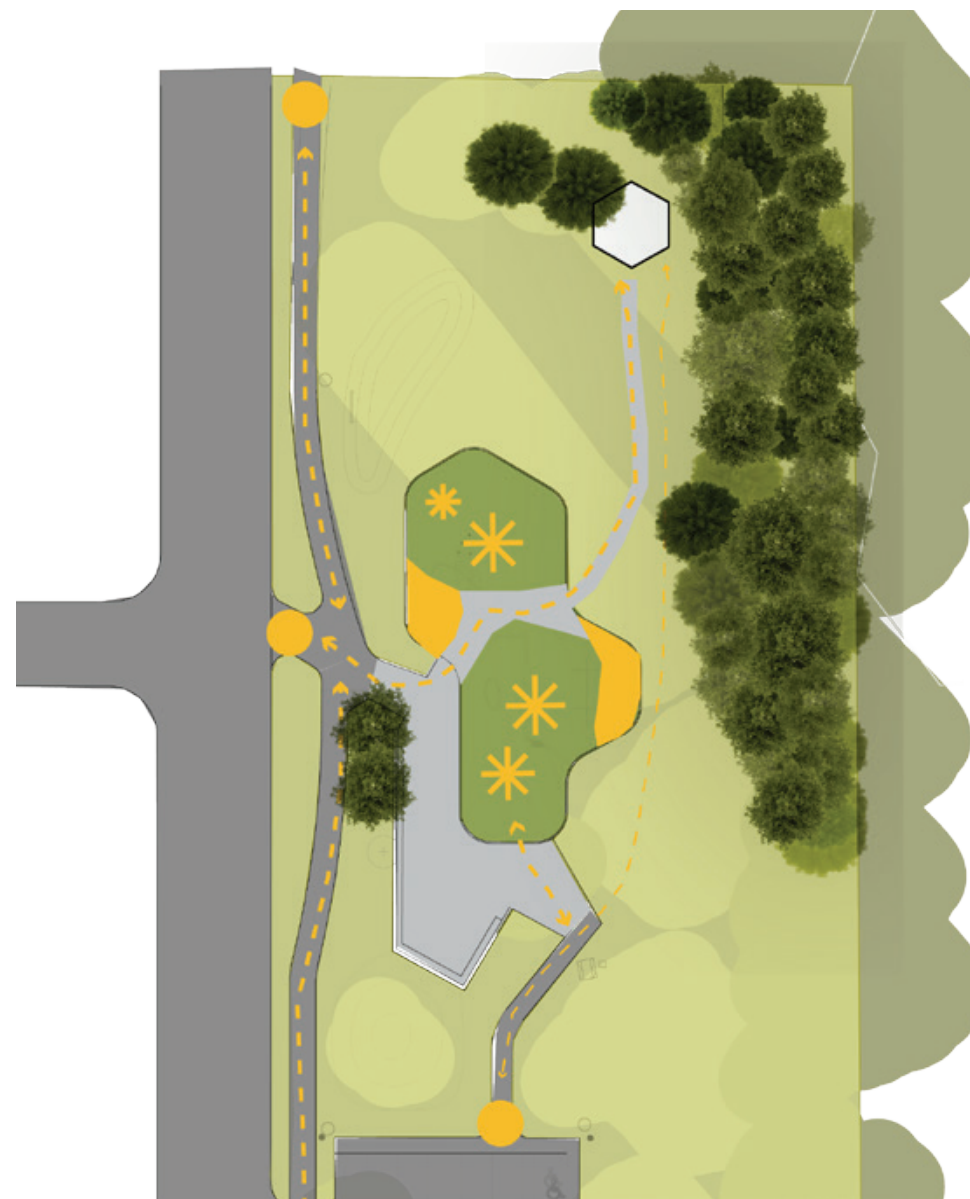


### CONCEPT ONE



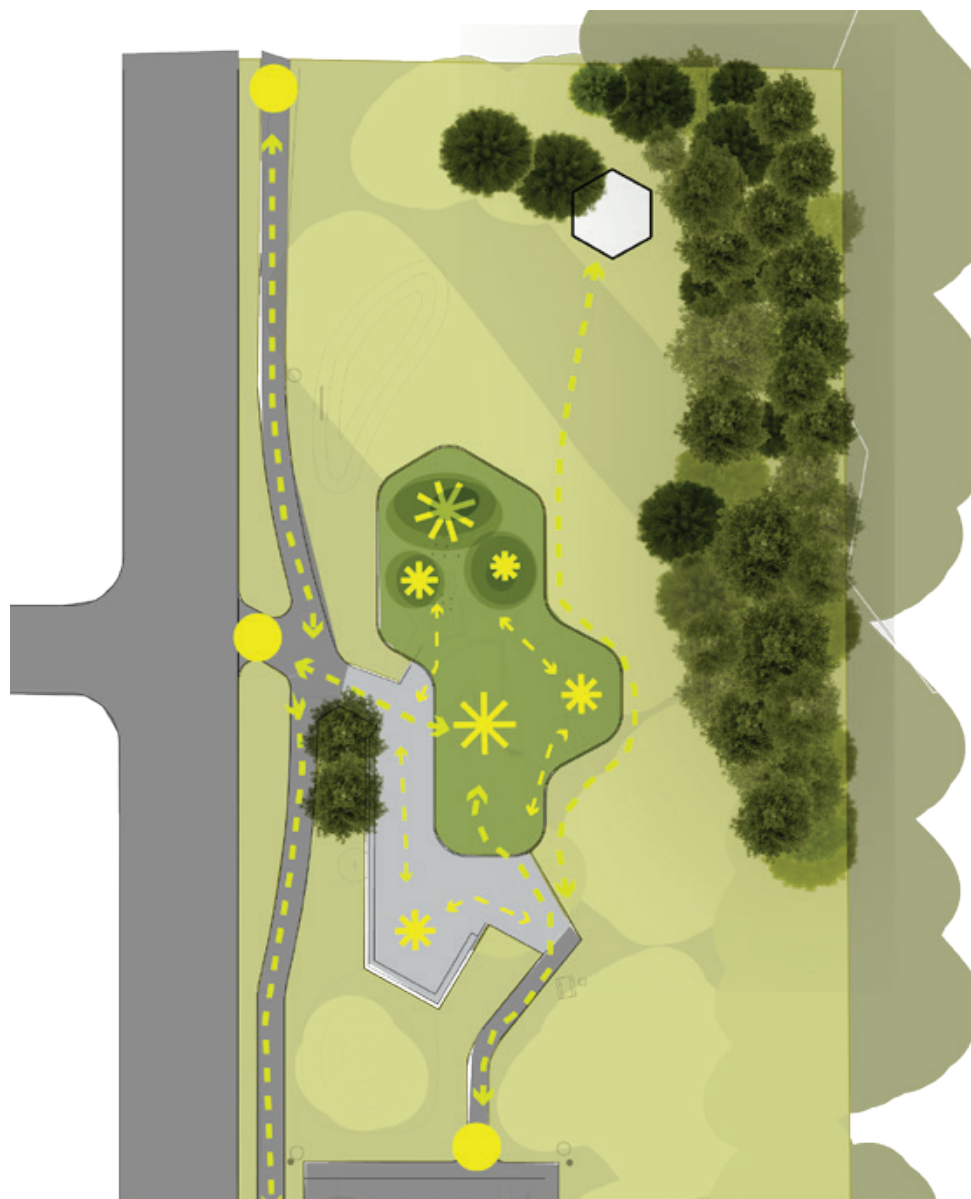
WATER THEMED SCIENCE/IMAGINATION

### CONCEPT TWO



CANYON THEME/CLIMBING AND IMAGINATION

### CONCEPT THREE



USE TOPOGRAPHY TO INFORM PLAY

## KIWANIS FISH CREEK PLAYGROUND CONCEPTS