



MUNICIPALITY OF ANCHORAGE
ANCHORAGE PARKS & RECREATION



PRC 11-11

DATE: April 14, 2011
TO: Parks & Recreation Commission
FROM: Joshua A Durand, Park Planner
SUBJECT: **PRC 11-11: 2011 Youth Employment in Parks Projects**

Overview

The Youth Employment in Parks (YEP) program is a program of the Anchorage Parks & Recreation Department and the Anchorage Park Foundation. The goal of the YEP program is to **positively engage a new generation of diverse youth leaders with the environment and the Anchorage community through meaningful training, employment, and outdoor recreation.**

Each summer, YEP hires Anchorage teens to complete park improvements and offer recreation programs in Anchorage parks. Teens learn valuable natural resource management and recreation job skills by building trails, restoring stream banks or leading neighborhood children in content-based play. In addition, youth learn from civic engagement and leadership training and participate in "Mentorship Week" at the end of the program to link their new skills to future careers.

The following YEP projects are planned and funded for the summer of 2011. You will notice some overlap with the Neighborhood Park Fix-It project list as well as the Urban Forestry 2011 work plan. This overlap is strategic for Park Operations allowing us to utilize private dollars and the YEP workforce to supplement annual operations thereby accomplishing more work.

University Lake, Cheney Lake and Ship Creek Bank Restoration

University Lake is a heavily used off-leash dog area and also part of Chester Creek. YEP Crews will restore approximately 77 ft of the lakes bank. The project will include measures to protect the restoration from foot traffic. This is a continuation of the 2010 YEP University Lake Project.

Cheney Lake located in east anchorage is a popular park with fishing, walking and numerous activities. The YEP crews will restore approximately 190 feet of bank adjacent a popular walking trail.

The YEP crews will add plantings to banks along Ship Creek to limit erosion along the trail system associated with the creek.

Anticipated Schedule: June 13th – June 17th
Anticipated Budget: \$62,000

Davis Park

YEP Crews will install a soft surface trail connecting the popular McPhee Community Gardens with Davis Park. The new trail will be approximately 1,500 lineal feet with an average width of 6 feet. Existing social trails were utilized in determining this projects alignment.

Anticipated Schedule: June 27th – July 1st *Anticipated Budget: \$34,000*

Harvard Park

YEP Crews will install a soft surface trail connecting Harvard Park to Browns Point using the Harvard Park Greenbelt. The new trail will be approximately 2,000 lineal feet with an average width of 6 feet. Existing social trails were utilized in determining this projects alignment.

Anticipated Schedule: June 27th – July 1st

Anticipated Budget: \$33,000

FNBP Forest Health Project: Spruce Bark Beetle Mitigation

Every year live spruce trees blow over and attract bark beetles due to a release in chemicals that the beetles can sense. YEP crews will reduce the number of green trees on the ground; chip branches back into the forest and debark the trees. Additionally crews will plant spruce seedlings in areas treated last year to help improve stand quality, structure and habitats.

This Project is contingent on funding from a Forest Service Grant. If funding becomes unavailable APF & MOA funds may be used to support (1) week of Brushing and Clearing associated with the Black Bear Trail located within FNBP.

Anticipated Schedule: July 11th – July 19th

Anticipated Budget: \$50,000

Beaver Pond Trail

This project will rehabilitate the existing singletrack (*Singletrack is a term used to describe a trail that is only wide enough for one person or mountain biker at a time. Singletrack is the most popular or sought after type of mountain bike trail*) located in Girdwood. The trail is approximately (3) miles long and littered with obstacles that inhibit the flow desired by Mountain Bike enthusiasts. The obstacles include roots, perennial mud and fallen trees. Improvements to this trail will benefit both Girdwood residents and the greater Anchorage area as the diversity and aesthetics contained in this easily accessible trail are unmatched.

Anticipated Schedule: July 5th – July 8th

Anticipated Budget: \$18,000

Kincaid Singletrack

Yep crews will perform the hand work associated with the construction of new singletrack trails located in Kincaid Park. Planned improvements include: the installation of 7 miles of new singletrack and the updating of 2 miles of existing social trails. All of this being led by Singletrack Advocates, a group of concerned mountain bikers and recreationists working with other trail users and land managers to preserve, maintain and create natural trails in the greater Anchorage area. Their efforts will be managed by Parks and Recreation and assisted by the Youth Employment in Parks program (YEP).

The Nordic Ski Association of Anchorage, the Arctic Bicycle Club and the Sand Lake Community Council are strong supporters of the planned improvements. The park has over 1 million visitors each year and hosts a number of statewide Mountain Biking and Cross Country running events which provides economic development to the region through hotel and visitor expenditures.

Anticipated Schedule: July 20th – July 29th

Anticipated Budget: \$200,000

YEP Budget: 30,000

Staff Recommendation: Parks & Recreation Staff recommends that the Parks & Recreation Commission approve the included resolution supporting the 2011 YEP Work and Project Plan



MUNICIPALITY OF ANCHORAGE
ANCHORAGE PARKS & RECREATION



RESOLUTION No. 2011 - 07

2011 Youth Employment in Parks Projects

WHEREAS, the Anchorage Parks and Recreation Commission serves in an advisory capacity to both the Mayor and the Assembly; and

WHEREAS, the Anchorage Parks and Recreation Commission has the responsibility and duty to provide for the long term vision of our park system by ensuring that a balance of parks, natural resources, and recreation facilities provides for the health, welfare, and safety of all residents of the Anchorage Bowl; and

WHEREAS, the Municipality of Anchorage Parks Department and the Anchorage Park Foundation has dedicated or achieved funding to support the 2011 Youth Employment in Parks crew season totaling \$227,000; and

WHEREAS the Youth Employment in Parks (YEP) is in its 5th year of operation with a planned scope of work that includes trail work, bank restoration and forest health projects to be completed during the 2011 YEP program season.

NOW THEREFORE BE IT RESOLVED, that the Anchorage Parks and Recreation Commission approves the Scope of Work submitted by the Department for the 2011 Youth Employment in Parks Projects.

PASSED AND APPROVED by the Anchorage Parks and Recreation Commission this 14th day of April, 2011.

Chair
Parks and Recreation Commission

ATTEST:

John Rodda, Director
Parks & Recreation Department



U N I V E R S I T Y L A K E

Sheet Title:

Location: Anchorage, AK

Sheet: L-1

Date: 4-4-2010

Scale: NTS





C H E N E Y L A K E B A N K R E S T O R A T I O N

Sheet Title: Site Plan

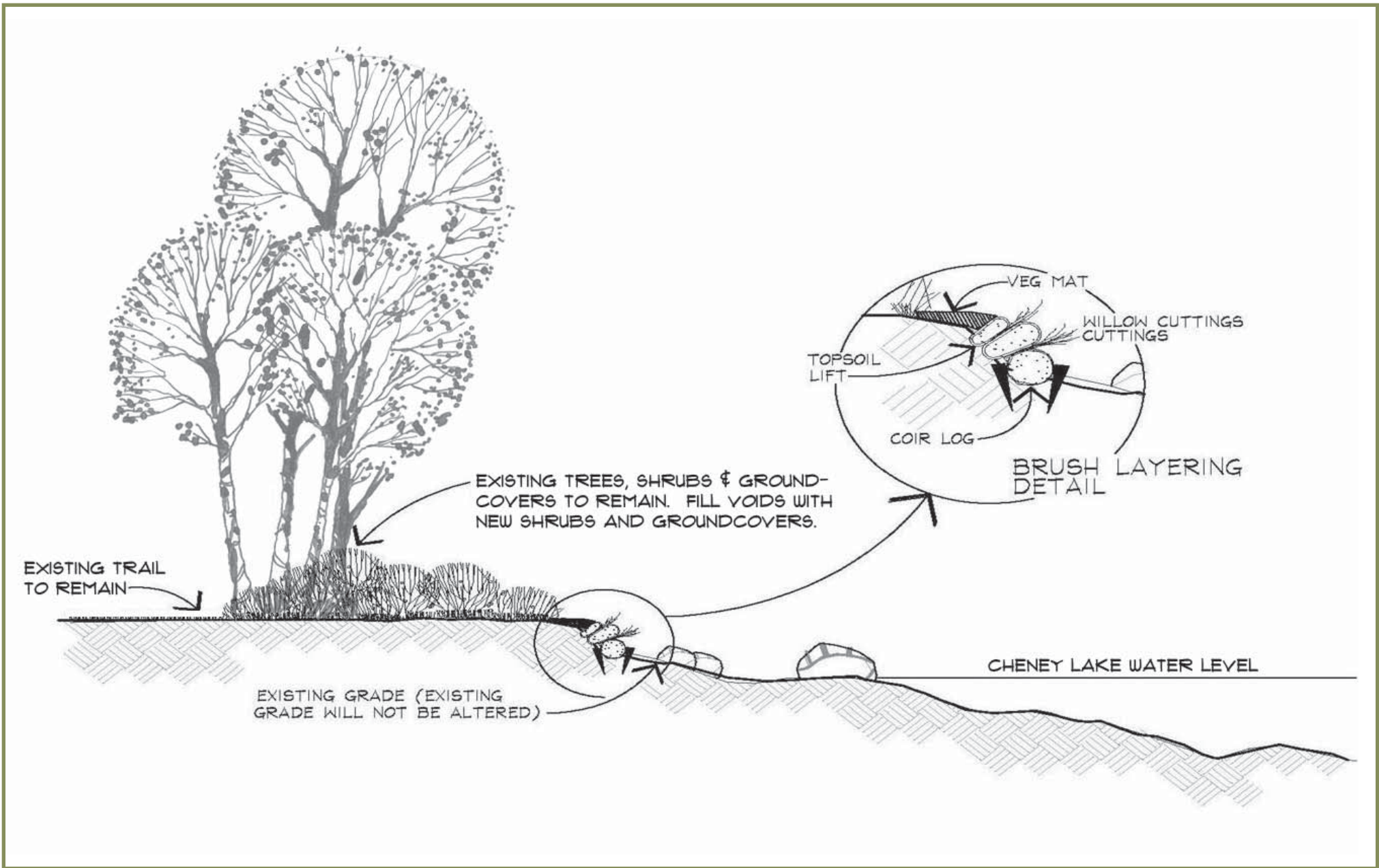
Legal Description: NE & SE 1/4 SEC 23 T113N B3W

Sheet: L-1

Date: 12-22-2010

Scale: NTS





C H E N E Y L A K E B A N K R E S T O R A T I O N

Sheet Title: Bank Restoration Cross Section

Legal Description: NE & SE 1/4 SEC 23 T113N B3W

Sheet: L-2

Date: 12-22-2010

Scale: NTS



PARKS & RECREATION



Project Overview

Goal: To restore an estimated 190 lineal feet of shoreline. See areas associated with blue safety fence in images above.

Method: Per ADFG Stream bank Restoration Guide. Brush layering with dormant willows and vegetative mat. Upland landscaping, including topsoil and approximately 250 alders. Restoration conforms to current bank slope and current bank line. Use silt fence during project. YEP (Youth Employment in Parks) crew members will implement project guided by MOA and FWS staff and a Landscape Contractor specializing in bank restoration using sustainable techniques.

C H E N E Y L A K E B A N K R E S T O R A T I O N

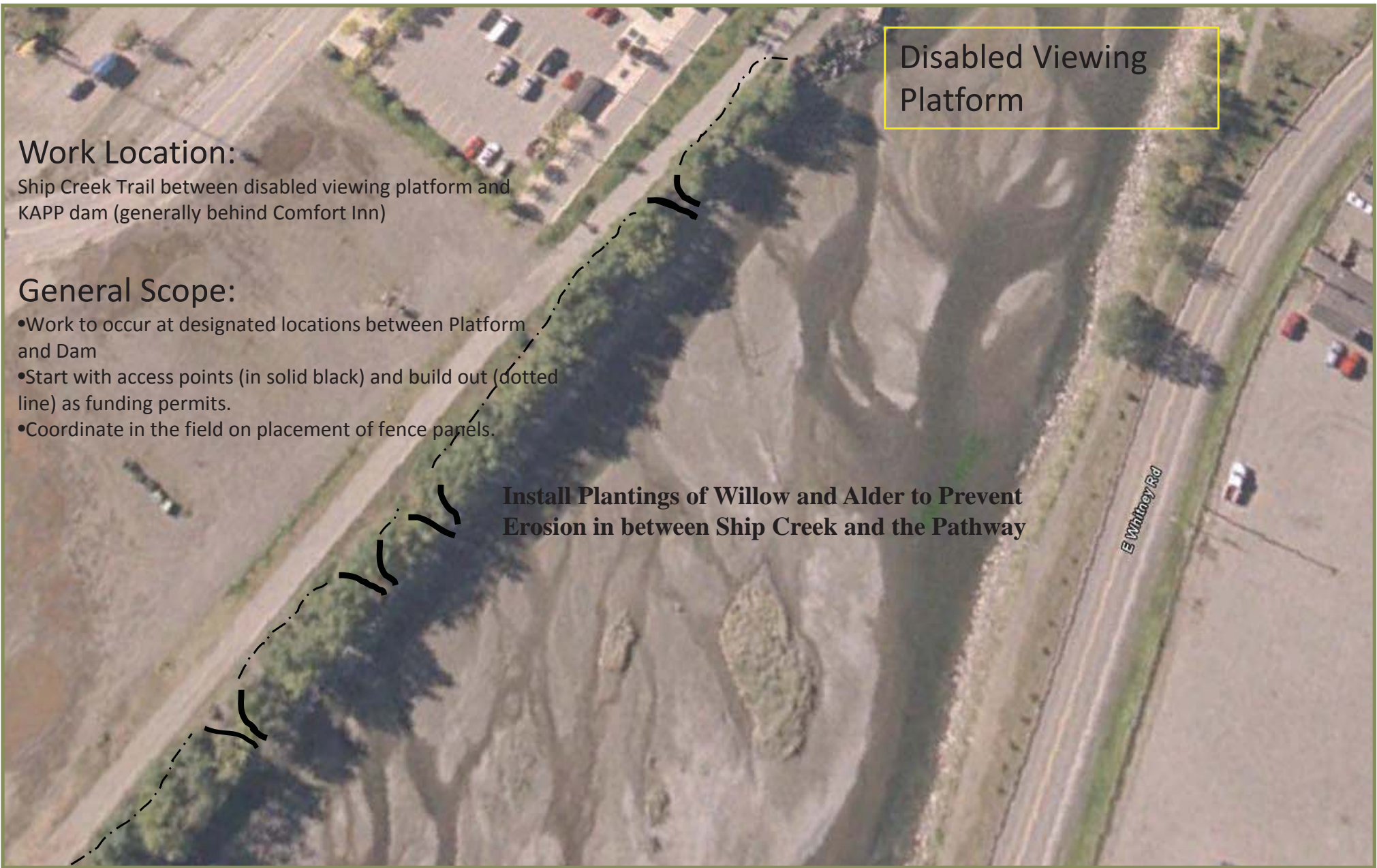
Sheet Title: Project Overview

Legal Description: NE & SE 1/4 SEC 23 T113N B3W

Sheet: L-3

Date: 12-22-2010

Scale: NTS



Work Location:

Ship Creek Trail between disabled viewing platform and KAPP dam (generally behind Comfort Inn)

General Scope:

- Work to occur at designated locations between Platform and Dam
- Start with access points (in solid black) and build out (dotted line) as funding permits.
- Coordinate in the field on placement of fence panels.

Install Plantings of Willow and Alder to Prevent Erosion in between Ship Creek and the Pathway

S H I P C R E E K B A N K R E S T O R A T I O N

Sheet Title: Site Plan

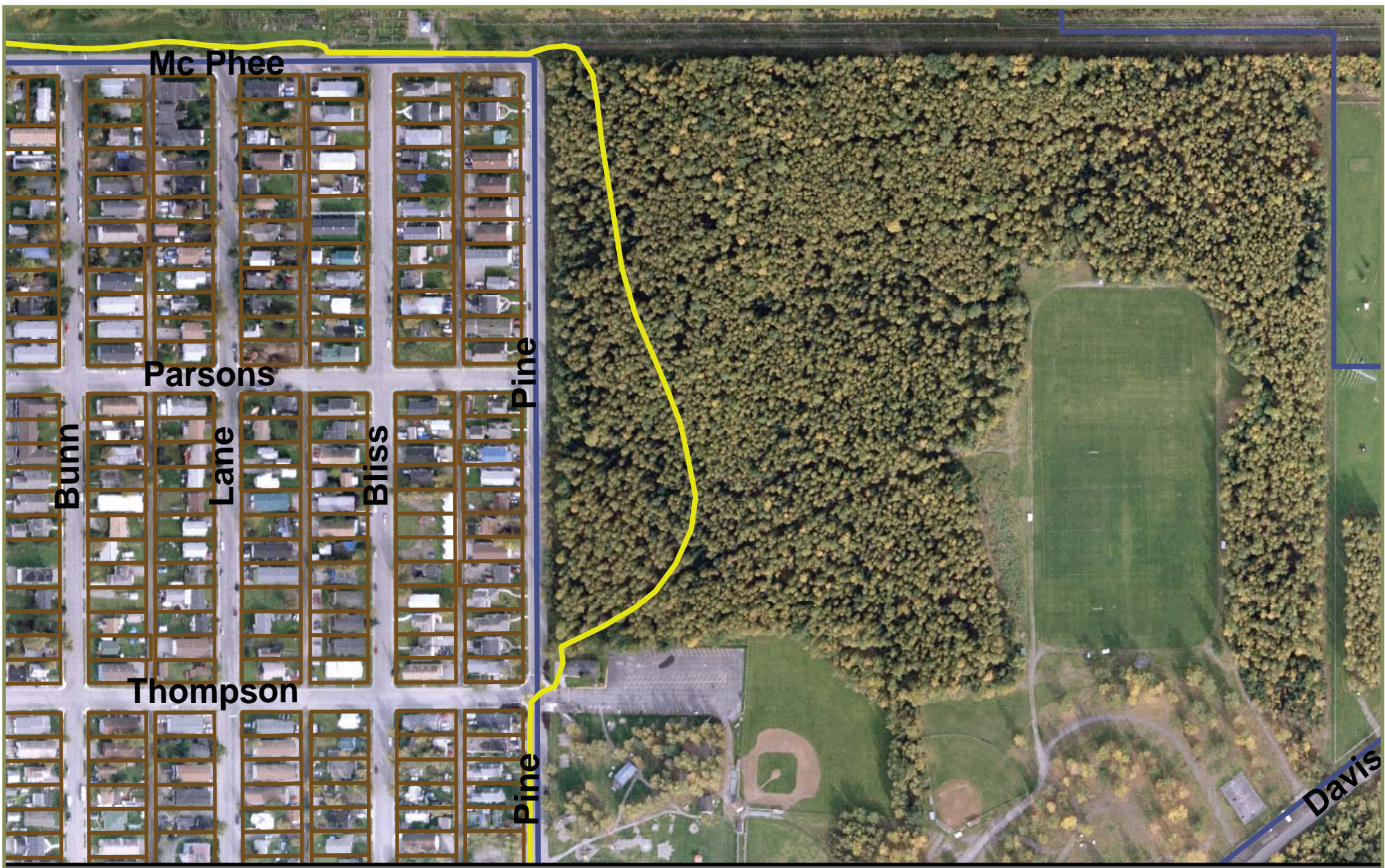
Location: Anchorage, AK

Sheet: L-1

Date: 3-22-2010

Scale: NTS





DAVIS PARK TRAIL

Sheet Title: Trail Alignment

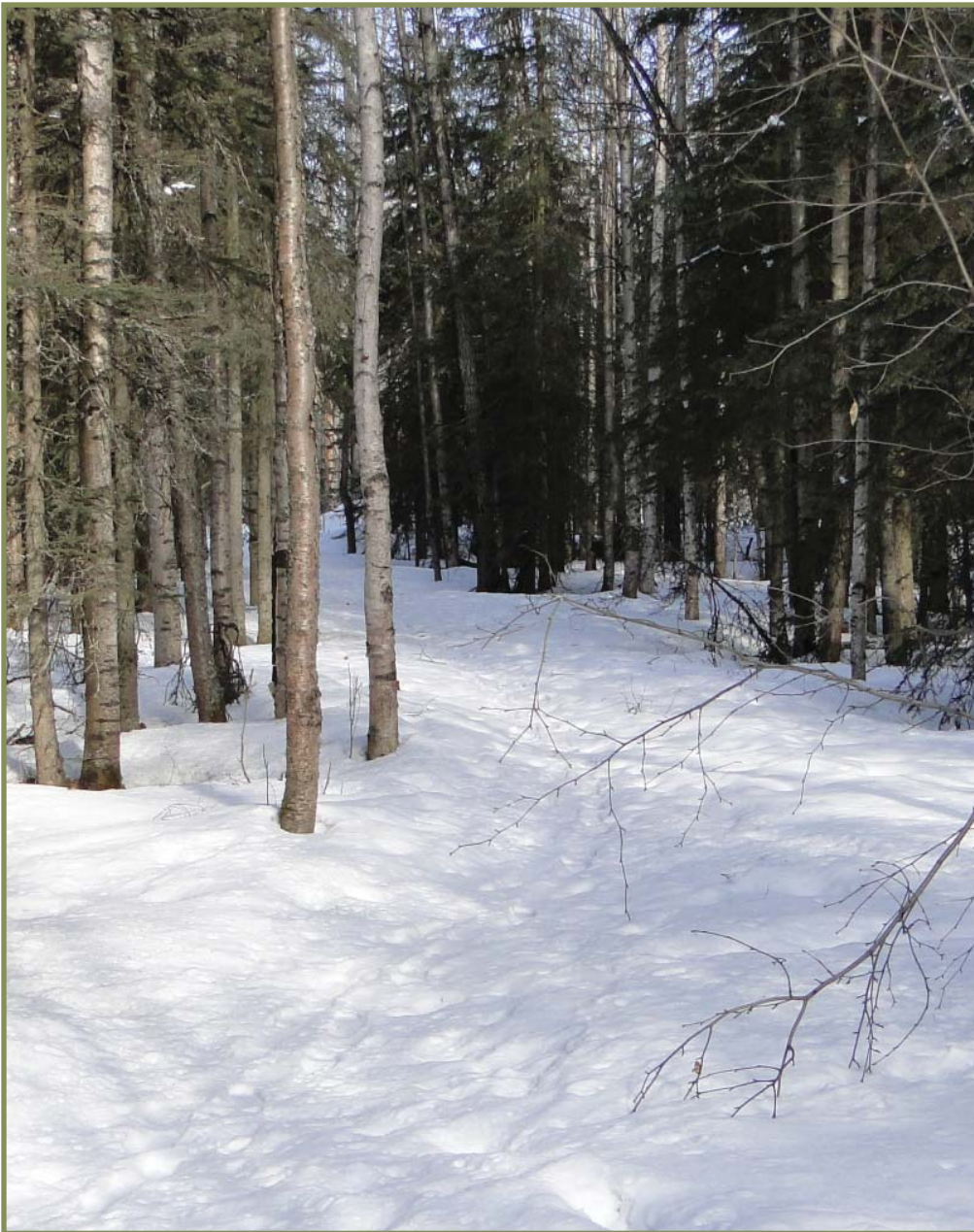
Location: 5081 Mountain View Drive Anchorage, AK

Sheet: L-1

Date: 3-22-2010

Scale: NTS





DAVIS PARK TRAIL

Sheet Title:

Location: 5081 Mountain View Drive Anchorage, AK

Sheet: L-2

Date: 3-22-2010

Scale: NTS





H A R V A R D P A R K T R A I L

Sheet Title: Trail Alignment

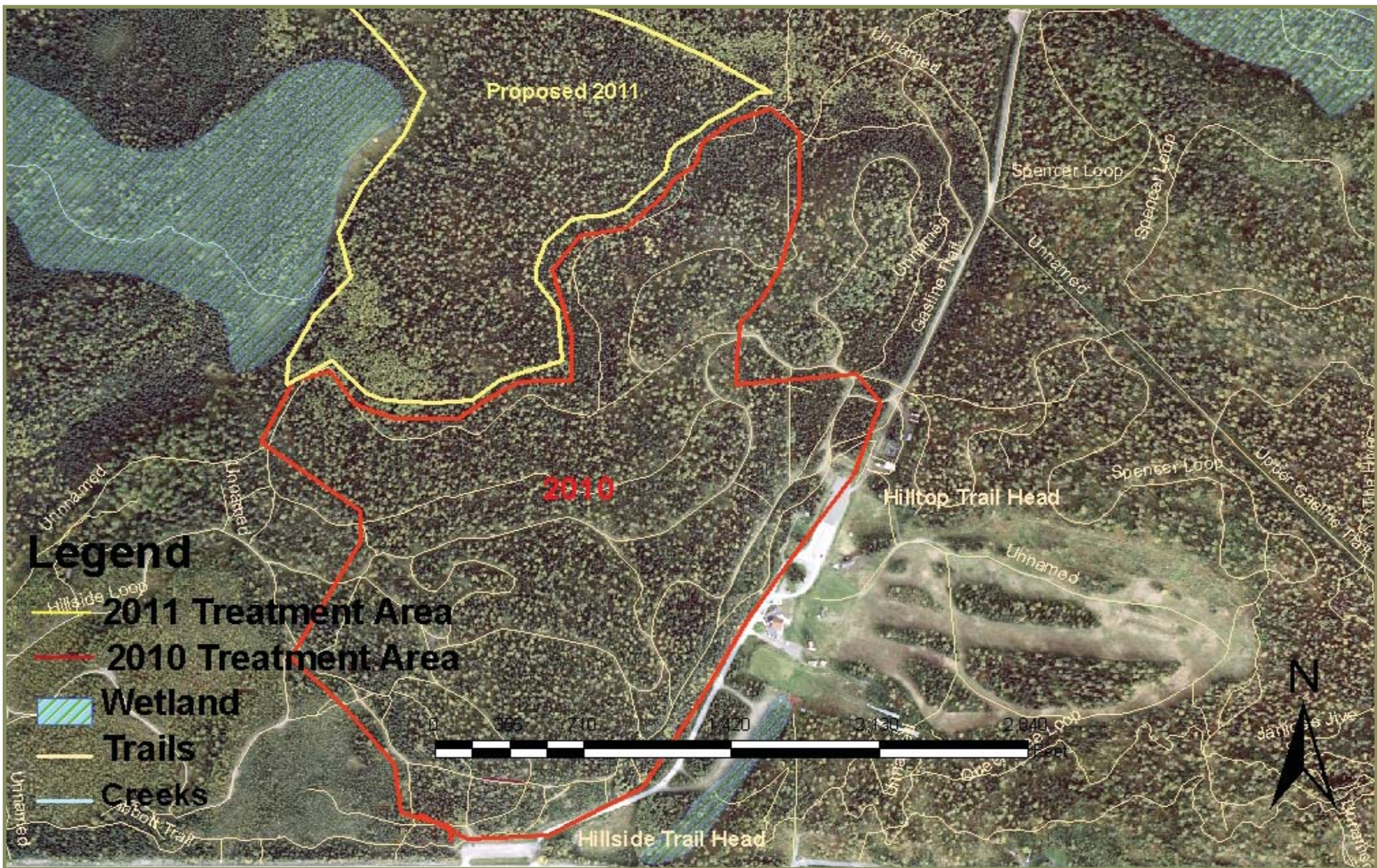
Location: 432 East Harvard Avenue Anchorage, AK

Sheet: L-1

Date: 3-22-2010

Scale: NTS





F N B P F O R E S T H E A L T H P R O J E C T

Sheet Title: Site Plan

Location: 4970 Campbell Airstrip Road Anchorage, AK

Sheet: L-1

Date: 4-1-2010

Scale: NTS



Healthy Parks
Healthy People
PARKS & RECREATION



F N B P F O R E S T H E A L T H P R O J E C T

Sheet Title:

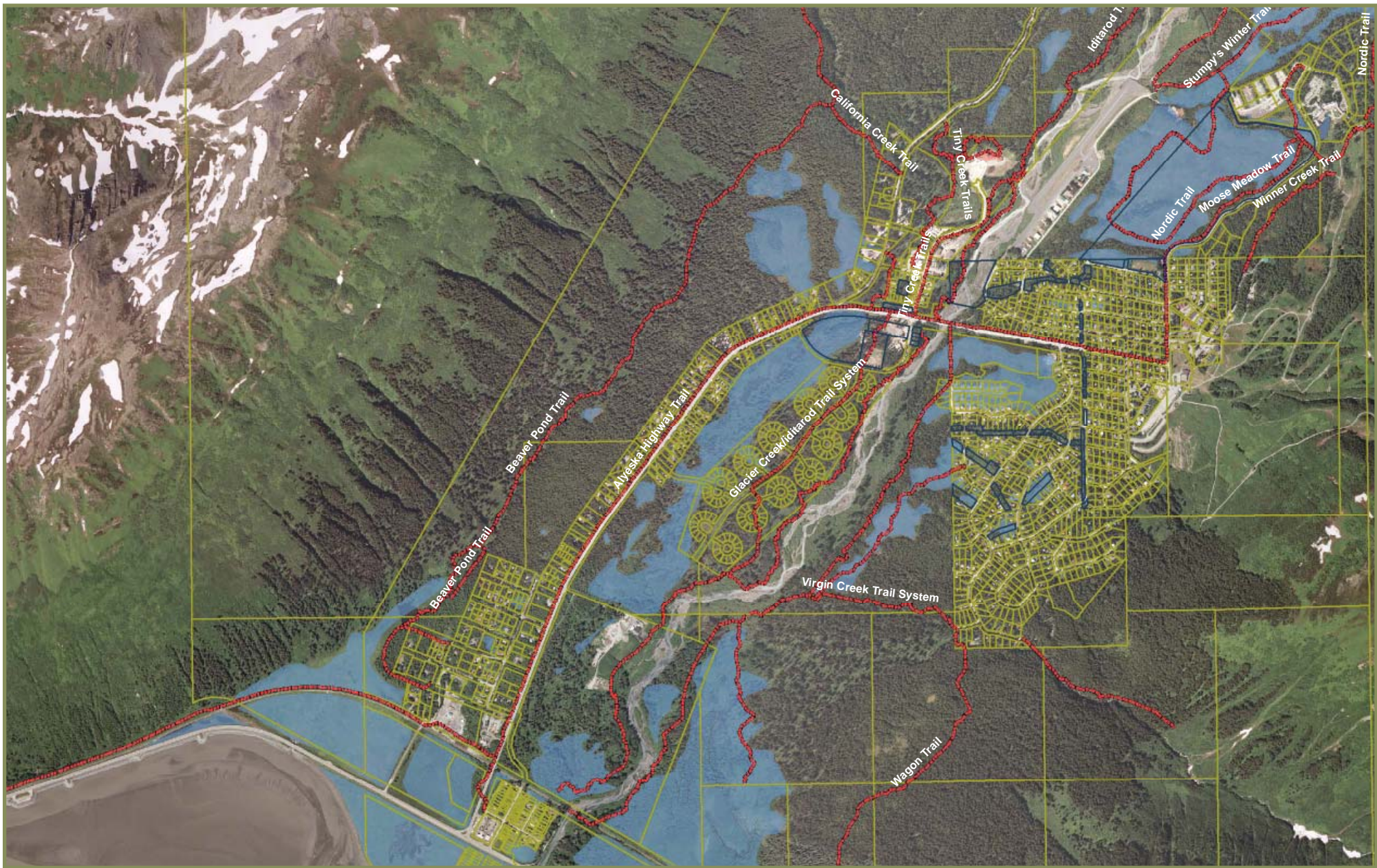
Location: 4970 Campbell Airstrip Road Anchorage, AK

Sheet: L-2

Date: 4-1-2010

Scale: NTS





BEAVER POND TRAIL

Sheet Title: Site Plan

Location: Girdwood, AK

Sheet: L-1

Date: 4-4-2010

Scale: NTS





B E A V E R P O N D T R A I L

Sheet Title:

Location: Girdwood, AK

Sheet: L-2

Date: 4-4-2010

Scale: NTS

Legend

- Proposed New Singletrack Trails
- Existing Social Trails to be maintained & upgraded
- Existing Social Trails
- Nordic Ski Trails

Kincaid Chalet

Raspberry R

Kincaid R

Jodhpur St

Jodhpur Parking Lot



K I N C A I D S I N G L E T R A C K

Sheet Title: Site Plan

Location: Anchorage, AK

Sheet: L-1

Date: 3-22-2010

Scale: NTS





K I N C A I D S I N G L E T R A C K

Sheet Title:

Location: Anchorage, AK

Sheet: L-2

Date: 3-22-2010

Scale: NTS





PROJECT OVERVIEW

1) TRAIL REPAIR

Goal: To repair sections of asphalt damaged by root systems located on the connecting trail in between Nichols & Tikishla Park.

Method: Paved trail to be repaired through saw cuts, root removal and cold patches in all areas with significant damage. YEP (Youth Employment in Parks) crew members will implement project guided by MOA Planning Staff and contracted Professional Trail Builder.

2) INVASIVE PLANT REMOVAL

Goal: Selected removal of the invasive Bird Cherry associated with the trail. Please see the following link for additional information on Bird Cherry <http://www.muni.org/Departments/parks/Documents/Final%20Bird%20Cherry%20Report.pdf>

Method: Physical removal of all young samplings through root wrenching. YEP (Youth Employment in Parks) crew members will implement project guided by MOA Forester and contracted Professional Trail Builder.

Recommended Future Work: Removal of large Cottonwood Trees in close proximity to the trail per recommendations by Municipal Forester. Re-paving of the entire trail with a new soft surface trail flanking the existing trail.

NICHOLS & TIKISHLA PARK CONNECTOR TRAIL IMPROVEMENTS

Sheet Title: Project Overview

Location: Chester Creek Greenbelt

Date: 05-02-2011

Scale: NTS

ANCHORAGE



PARKS & RECREATION



NICHOLS & TIKISHLA PARK CONNECTOR TRAIL IMPROVEMENTS

Sheet Title: Project Overview

Location: Chester Creek Greenbelt

Date: 05-02-2011

Scale: 1" = 200'-0"

ANCHORAGE



PARKS & RECREATION