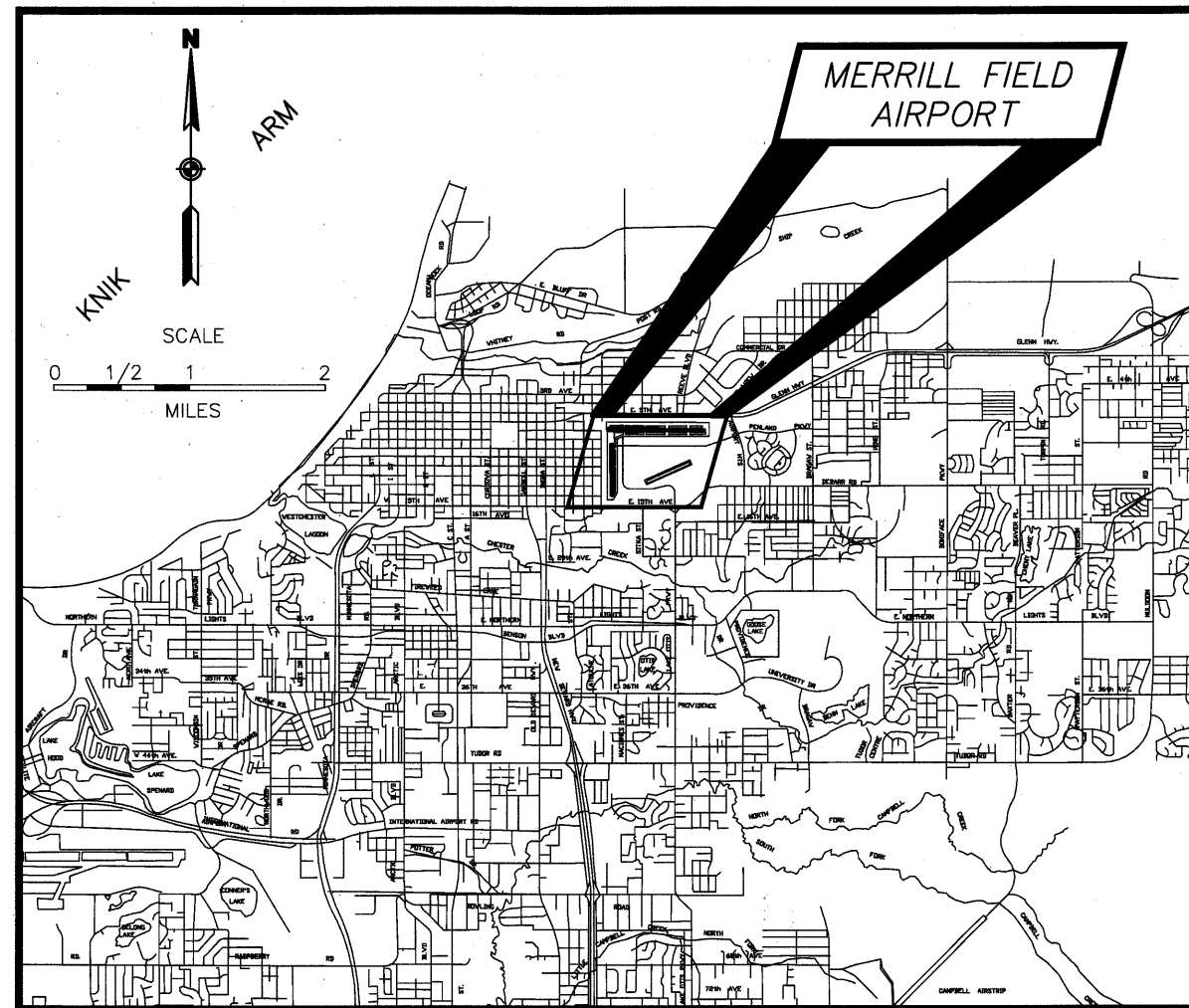


AS-BUILT AIRPORT LAYOUT PLAN MERRILL FIELD AIRPORT ANCHORAGE, ALASKA



LOCATION MAP

SHEET INDEX

- 1 COVER
- 2 AIRPORT LAYOUT DRAWING
- 3 DATA TABLES
- 4 AIRSPACE PLAN
- 5 INNER PORTION APPROACH SURFACE DRAWING RUNWAY 7-25
- 6 INNER PORTION APPROACH SURFACE DRAWING RUNWAY 16-34
- 7 INNER PORTION APPROACH SURFACE DRAWING RUNWAY 5-23
- 8 TERMINAL AREA PLAN
- 9 AIRPORT ACCESS PLAN
- 10 LAND USE PLAN
- 11 PROPERTY MAP - EXHIBIT "A"
- 12 LAND OCCUPANCY DRAWING
- 13 LAND OCCUPANCY TABLE

PREPARED BY:

USKH

Architecture • Engineering • Land Surveying • Planning
2515 'A' Street
Anchorage, Alaska 99503
(907) 276-4245

UPDATED BY:

HDR
Alaska, Inc.

R&M CONSULTANTS, INC.
9101 Vanguard Drive, Anchorage, Alaska 99507

David A. Lundby
APPROVED BY: DAVID A. LUNDEBY, AIRPORT MANAGER
DATE 11/26/2012

PLOT DATE: 11/14/2012 3:31 PM
FILE NAME: C:\pwworking\sec\00700040\MRI-ALP03.dwg

RUNWAY DATA						
RUNWAY (SEE NOTE 5)	RUNWAY 7-25		RUNWAY 16-34		RUNWAY 5-23	
	EXISTING	ULTIMATE	EXISTING	ULTIMATE	EXISTING	ULTIMATE
EFFECTIVE GRADIENT (%)	0.25%	SAME	0.26%	SAME	0.26%	SAME
10.5 KNOT WIND COVERAGE	98.39%	SAME	99.77%	SAME	98.51%	SAME
RUNWAY SURFACE	ASPHALT	SAME	ASPHALT	SAME	GRAVEL	SAME
PAVEMENT STRENGTH	SW 50,000/DW 80,000	SAME	SW 20,000	SAME	< 12,500	SAME
APPROACH SURFACES (WITH VISIBILITY MINIMUMS)	20:1	SAME	20:1	SAME	20:1	SAME
	VISUAL	SAME	VISUAL	SAME	VISUAL	SAME
RUNWAY LIGHTING	MIRL	SAME	MIRL	SAME	REFLECTORS	MIRL
RUNWAY MARKING	PRECISION	SAME	VISUAL	SAME	NONE	SAME
RUNWAY VISUAL AND INSTRUMENT NAVIGATION AIDS	GPS-A REIL/VASI-2	SAME	REIL, PAPI-2 R/W 34	SAME	NONE	VASI-2
	R/W 7 AND 25		REIL, VASI-2 R/W 16	R/W 16 AND 34		R/W 5 AND 23
RUNWAY SAFETY AREA	4600 X 150	SAME	3044 X 120	3044 X 120	2480 X 120	SAME
RUNWAY DIMENSION	4000 X 100	SAME	2640 X 75	SAME	2000 X 60	SAME
TAXIWAY SURFACE	ASPHALT	SAME	ASPHALT	SAME	GRAVEL	SAME
TAXIWAY LIGHTING	MITL	SAME	MITL	SAME	REFLECTORS	SAME
RUNWAY END COORDINATES**	7	LATITUDE	61°12'57.25" N	SAME		
		LONGITUDE	149°51'11.78" W	SAME		
	25	LATITUDE	61°12'57.24" N	SAME		
		LONGITUDE	149°49'50.10" W	SAME		
RUNWAY END COORDINATES**	16	LATITUDE		61°12'58.46" N	SAME	
		LONGITUDE		149°51'09.04" W	SAME	
	34	LATITUDE		61°12'30.46" N	SAME	
		LONGITUDE		149°51'09.10" W	SAME	
RUNWAY END COORDINATES**	5	LATITUDE			61°12'34.82" N	SAME
		LONGITUDE			149°50'42.51" W	SAME
	23	LATITUDE			61°12'42.79" N	SAME
		LONGITUDE			149°50'05.17" W	SAME
RUNWAY PROTECTION ZONE DIMENSIONS	LENGTH	1000	SAME	1000	SAME	SAME
	INNER WIDTH	250	SAME	250	SAME	SAME
	OUTER WIDTH	450	SAME	450	SAME	SAME
	AREA	8.03 ACRES	SAME	8.03 ACRES	SAME	8.03 ACRES
OBJECT FREE AREA	4600 X 500	SAME	3120 X 250	SAME	2480 X 250	SAME
OBSTACLE FREE ZONE	4400 X 250	SAME	3040 X 250	SAME	2400 X 250	SAME
BUILDING RESTRICTION LINE	300'NORTH 365' SOUTH	SAME	300'EAST 200'WEST	SAME	225'	SAME
RUNWAY END STATIONING	94+17.91/134+17.91	SAME	300+00/273+60	SAME	10+00/30+00	SAME
RUNWAY END ELEV. (NAD83)						
RUNWAY 7/25	124.4/136.9	SAME				
RUNWAY 16/34			124.4/117.1	SAME		
RUNWAY 5/23					128.50/133.65	SAME
RUNWAY TOUCHDOWN ELEV. (TDZE)						
RUNWAY 7/25	***127.6/136.9	SAME				
RUNWAY 16/34			N/A	N/A		
RUNWAY 5/23					N/A	N/A

***1000' FROM THRESHOLD

TAXIWAY DATA																			
TAXIWAY DESIGNATION	A	B	C	D	E	F	G	H	J	K	L	M	N	P	Q	R	S	T	W
TAXIWAY WIDTH	75	35	60	75/65	35	35	75	35	75/50	340/230	35	35/100	75	N/A	65	50	200	35	35
TAXIWAY OBJECT FREE AREA WIDTH	131+	89+	89+	131+	131+	131+	131+	131+	131+	N/A	131+	89+	131+	N/A	131+	89+	N/A	131+	131+
TAXIWAY SAFETY AREA WIDTH	79+	49+	49+	79+	79+	79+	79+	79+	79+	N/A	79+	49+	79+	N/A	79+	79+	N/A	79+	79+
TAXIWAY ULTIMATE WIDTH												100							

- * FOR SMALL AIRPLANES (<12,500 LBS GROSS TAKE OFF WEIGHT)
** NORTH AMERICAN DATUM OF 1983 (NAD 83)

AIRPORT DATA			EXISTING	ULTIMATE
AIRPORT ELEVATION (MSL)			136.9	SAME
AIRPORT REFERENCE POINT (A.R.P.)**	LATITUDE		61°12'48.77" N	SAME
	LONGITUDE		149°50'40.95" W	SAME
MEAN TEMPERATURE HOTTEST MONTH			68° (JULY)	SAME
AIRCRAFT DESIGN GROUP				
RUNWAY 7-25			II	SAME
RUNWAY 16-34			I	SAME
RUNWAY 5-23			I	SAME
AIRCRAFT APPROACH CATEGORY				
RUNWAY 7-25			B	SAME
RUNWAY 16-34			B	SAME
RUNWAY 5-23			A	SAME
AIR TRAFFIC CONTROL TOWER			YES	SAME
AIRPORT CATEGORY AND ROLE			PRIMARY COMMERCIAL SERVICE AND G.A. RELIEVER	SAME
AIRPORT SURVEY MONUMENTATION **			NAD 83	SAME
GPS MONUMENT "FIELD"	LATITUDE		61°12'54.46"N	
	LONGITUDE		149°51'06.96"W	SAME
	ELEVATION		123.7 FT.	
GPS MONUMENT "MRI-ARP-1967"	LATITUDE		61°12'58.26"N	
	LONGITUDE		149°50'31.79W	SAME
	ELEVATION		129.9 FT.	
GPS-A TO AIRPORT WITH CIRCLING MINIMUMS			600'/1 MILE	SAME

- NOTES:
1. OBSTACLE FREE ZONE 250 FEET WIDE FOR SMALL AIRCRAFT.
 2. THERE ARE NO OBSTACLE FREE ZONE PENETRATIONS.
 3. THERE ARE NO THRESHOLD SITING SURFACE OBJECT PENETRATIONS.
 4. THE RUNWAYS ARE LIMITED TO USE BY AIRCRAFT OF 12,500 POUNDS OR LESS EXCEPT BY PRIOR PERMISSION OF AIRPORT.

NON STANDARD CONDITIONS			
DESCRIPTION	STANDARD	ACTUAL	DISPOSITION
RUNWAY 7-25 TO TAXIWAY A	240	200	NONE
RUNWAY 16-34 RSA LENGTH	3120	3044	CONDUCTED RSA ANALYSIS AS PART OF A.I.P. 3-02-0015-050-2010 RUNWAY 16/34 REHABILITATION PROJECT. RSA WAS EXTENDED 44 FEET

MODIFICATIONS TO STANDARDS			
DESCRIPTION	STANDARD	ACTUAL	DISPOSITION
RUNWAY 25 WIND CONE			FAA APPROVED 6/23/99

DJG	11/09/12	ASBUILT UPDATE
DJG	07/08/08	NEW RUNWAY NUMBERS & 5TH AVE DESIGN
DJG	12/30/08	AIRPORT REDLINES 9-16-2008
DJG	11/09/12	PROPERTY DATA UPDATE
BY	DATE	REVISIONS

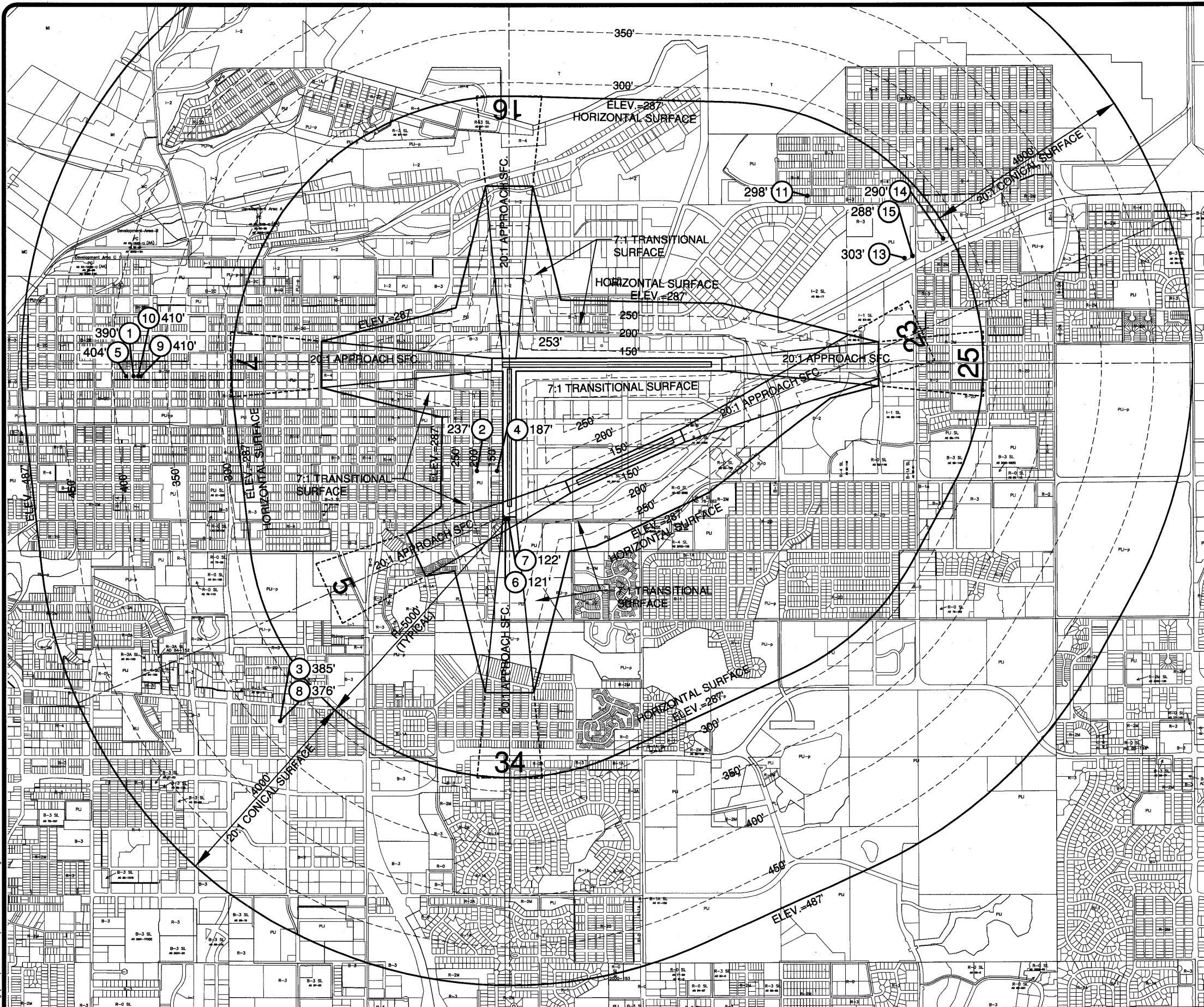
FAA AIRSPACE CASE NO.: 00-AAL-149-NRA
FAA APPROVAL LETTER DATED: *12/12*
BY: *For Ance*
FAA ALASKA REGION, AIRPORTS DIVISION

USKH
ANCHORAGE • WASILLA • JUNEAU • FAIRBANKS
2515 'A' Street • Anchorage, Alaska 99503
Phone (907) 276-4245 FAX (907) 258-4653

MERRILL FIELD AIRPORT
ANCHORAGE, AK
DATA TABLES

SHEET
3 OF 13

PLOT DATE: 11/7/2012 11:36 AM
FILE NAME: C:\pwworking\sea\0700040\MRI-ALP04-ULT.dwg



OBSTRUCTION DATA

No.	DESCRIPTION	TOP ELEV	PART 77 SURFACE PENETRATION	DISPOSITION OF OBSTRUCTION
1	ANT. ON BLDG.	390'	+10'	NO LIGHTING
2	ANT. ON BLDG.	237'	+46'	NO LIGHTING
3	ANT. TOWER ON BLDG.	385'	+53'	NO LIGHTING
4	ANT. ON BLDG.	187'	+51'	NO LIGHTING
5	ANT. ON BLDG.	404'	+17'	NO LIGHTING
6	STREET LIGHT	121'	+1'	NO LIGHTING
7	STREET LIGHT	122'	+2'	NO LIGHTING
8	ANT. ON BLDG.	376'	+44'	NO LIGHTING
9	ANT. TOWER ON BLDG.	410'	+37'	MARKED AND LIGHTED
10	ANT. TOWER ON BLDG.	410'	+34'	MARKED AND LIGHTED
11	TOWER	298'	+11'	NO LIGHTING
12	ANT. ON TOWER	253'	+88'	NO LIGHTING
13	UNUSED	---	---	---
14	HIGH TOWER	290'	+3'	MARKED AND LIGHTED
15	HIGH TOWER	288'	+1'	MARKED AND LIGHTED

SEE INNER PORTION-APPROACH SURFACE DRAWINGS FOR CLOSE-IN OBSTRUCTIONS
ANT=ANTENNA, OL=OBSTRUCTION LIGHTED, TWR=TOWER, BLDG=BUILDING

DJG	11/09/12	ASBUILT UPDATE
DJG	07/08/08	NEW RUNWAY NUMBERS & 5TH AVE DESIGN
DJG	12/30/08	AIRPORT REDLINES 9-16-2008
DJG	11/09/12	PROPERTY DATA UPDATE
BY	DATE	REVISIONS

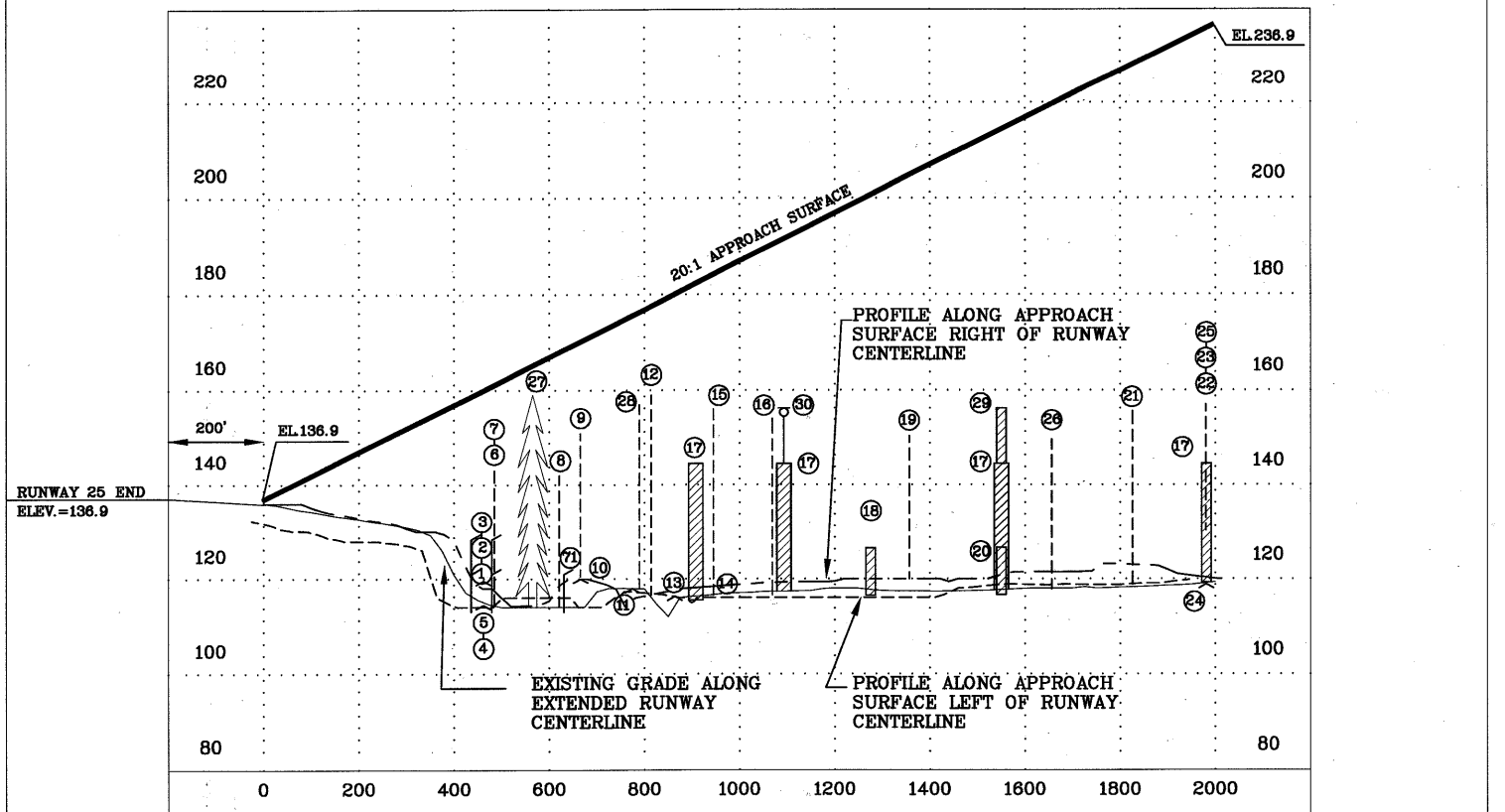
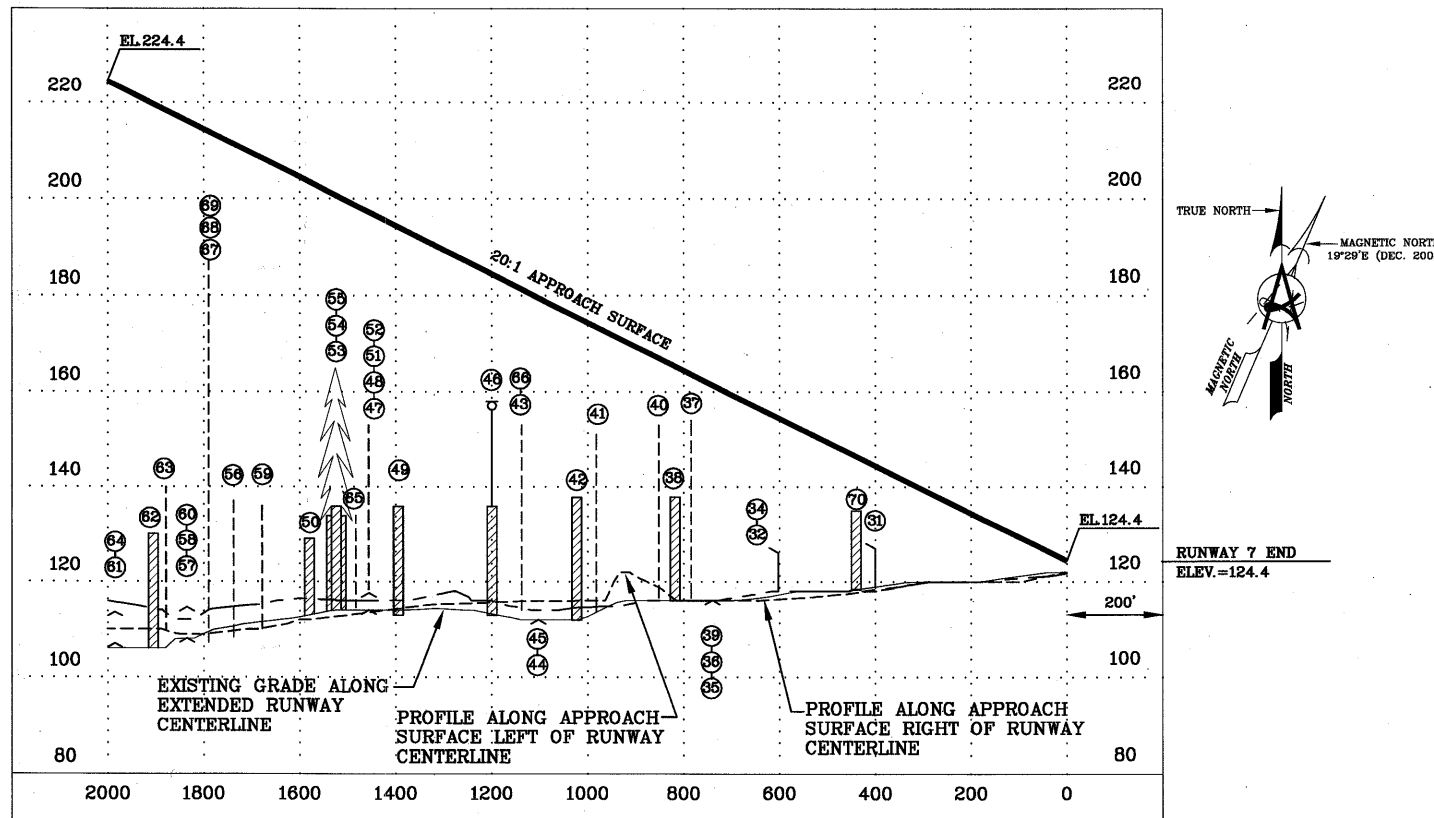
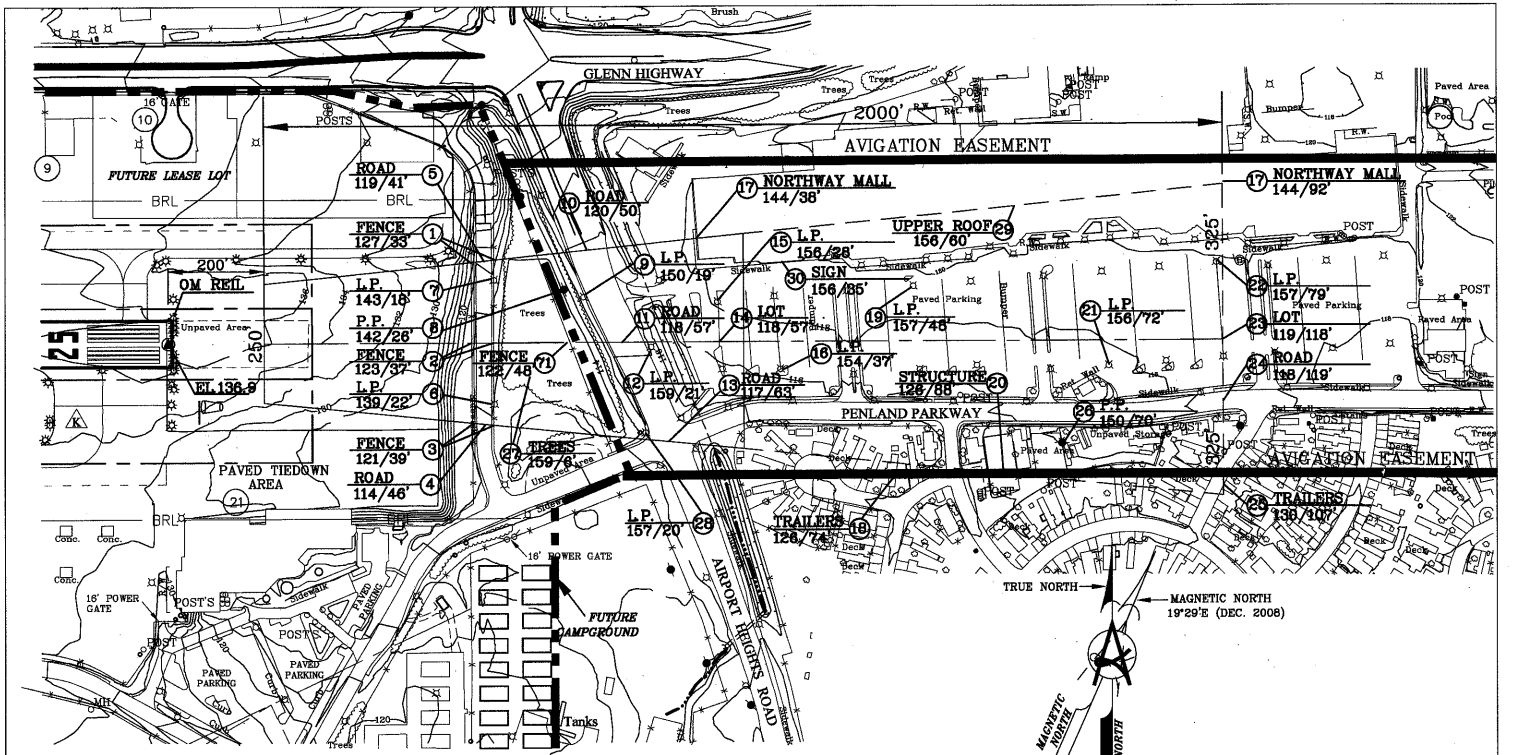
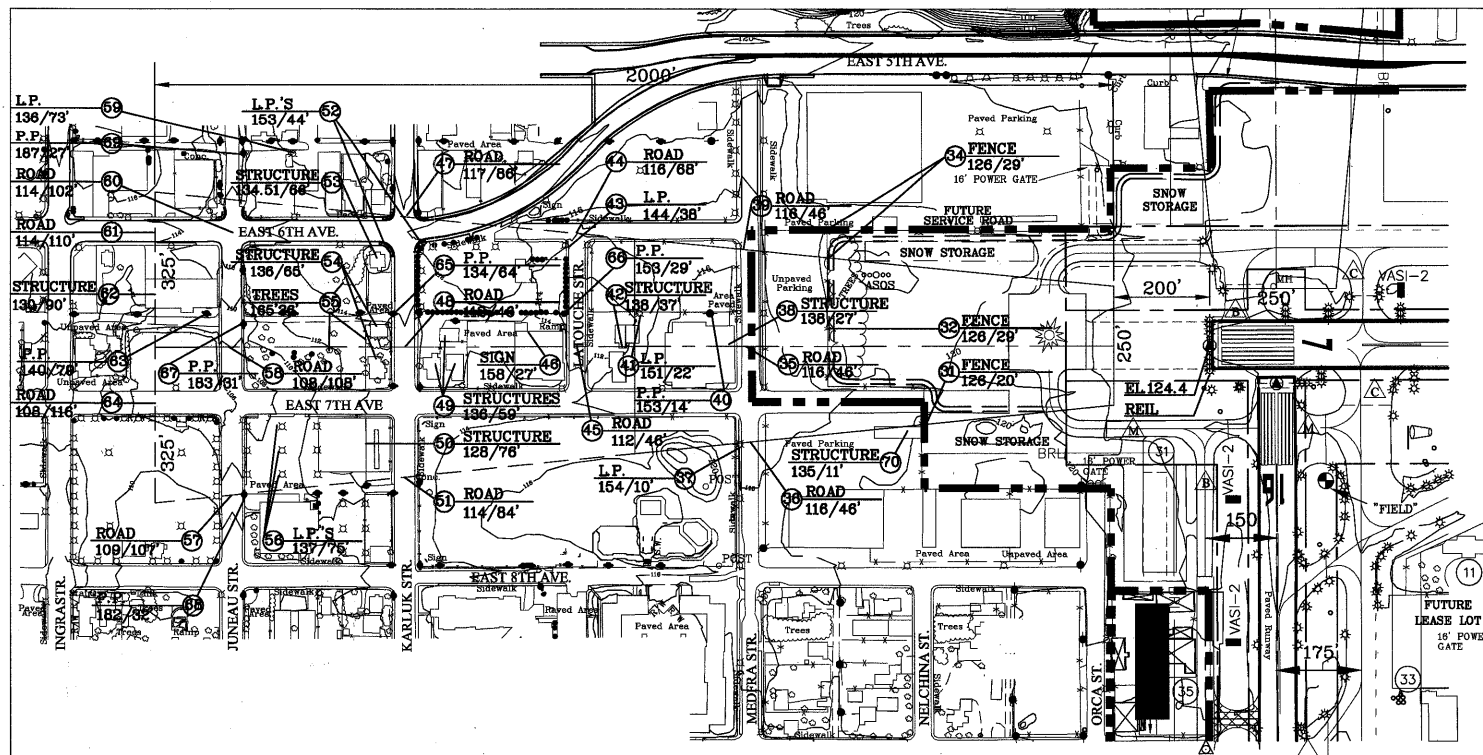
FAA AIRSPACE CASE NO.: 00-AAL-149-NRA
FAA APPROVAL LETTER DATED: 10/31/12
BY: *[Signature]*
FAA ALASKA REGION, AIRPORTS DIVISION

USKH
ANCHORAGE • WASILLA • JUNEAU • FAIRBANKS
2515 'A' Street • Anchorage, Alaska 99503
Phone (907) 276-4245 FAX (907) 258-4653

MERRILL FIELD AIRPORT
ANCHORAGE, AK
AIRSPACE PLAN

SHEET
4 OF 13

PLOT DATE: 11/7/2012 3:05 PM
FILE NAME: C:\working\sea\0700040\MR-ALP05-ULT.dwg



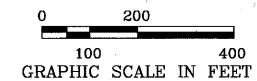
RUNWAY 7 APPROACH SURFACE

LEGEND

- ② FEATURE
ELEVATION/VERTICAL CLEARANCE TO APPROACH SURFACE
- P.P. POWER POLE
L.P. LIGHT POLE
T/W TAXIWAY

RUNWAY 25 APPROACH SURFACE

NOTE: NO PENETRATIONS



RUNWAY 7 OBSTRUCTION DATA

No.	DESCRIPTION	TOP ELEV	APPROACH SURFACE PENETRATION	DISPOSITION OF OBSTRUCTION
	NO PENETRATIONS			

BY	DATE	REVISIONS
DJG	11/09/12	ASBUILT UPDATE
DJG	07/08/08	NEW RUNWAY NUMBERS & 5TH AVE DESIGN
DJG	12/30/08	AIRPORT REDLINES 9-16-2008
DJG	11/09/12	PROPERTY DATA UPDATE

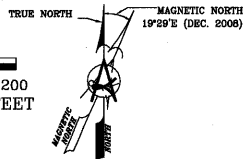
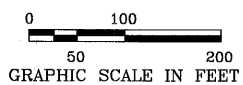
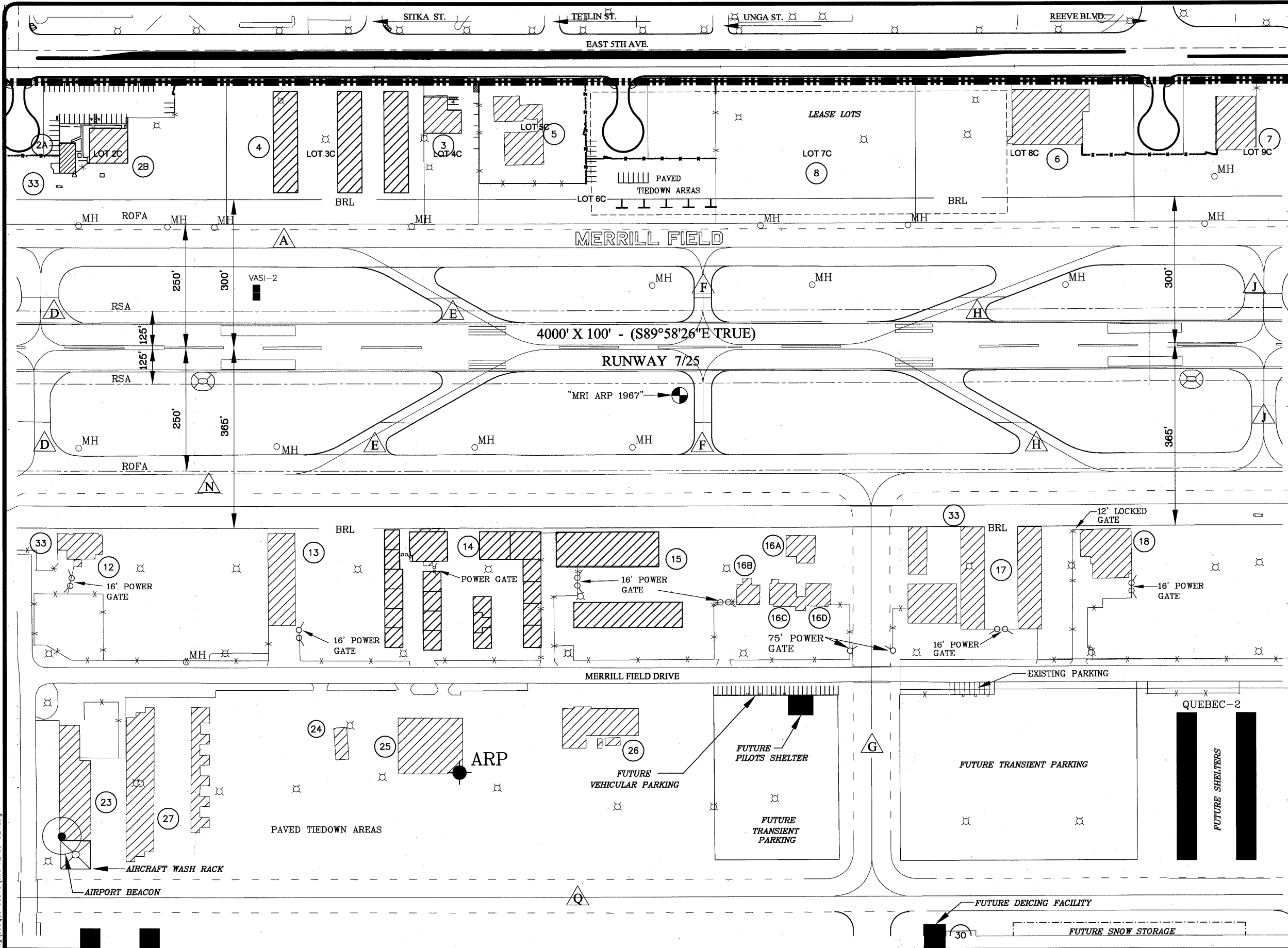
FAA AIRSPACE CASE NO.: 00-AAL-149-NRA
FAA APPROVAL LETTER DATED: 12/13/12
BY: *[Signature]*
FAA ALASKA REGION, AIRPORTS DIVISION

USKH
ANCHORAGE • WASILLA • JUNEAU • FAIRBANKS
2515 'A' Street • Anchorage, Alaska 99503
Phone (907) 276-4245 FAX (907) 258-4653

MERRILL FIELD AIRPORT
ANCHORAGE, AK
INNER PORTION-
APPROACH SURFACE DRAWING
RUNWAY 7/25

SHEET
5 OF 13

PLOT DATE: 11/7/2012 11:42 AM
FILE: \\NAS6000\ANCHORAGE\90700040\MR-ALP08-ULT.dwg



DJG	11/09/12	ASBUILT UPDATE
DJG	07/08/08	NEW RUNWAY NUMBERS & 5TH AVE DESIGN
DJG	12/30/08	AIRPORT REDLINES 9-16-2008
DJG	11/09/12	PROPERTY DATA UPDATE
BY	DATE	REVISIONS

FAA AIRSPACE CASE NO.: 00-AAL-149-NRA
FAA APPROVAL LETTER DATED: 12/3/12
BY: *Pat Olin* AAL-021
FAA ALASKA REGION, AIRPORTS DIVISION

USKH
ANCHORAGE • WASILLA • JUNEAU • FAIRBANKS
2515 'A' Street • Anchorage, Alaska 99503
Phone (907) 276-4245 FAX (907) 258-4653

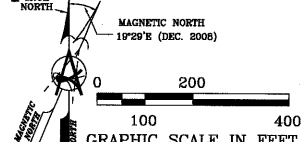
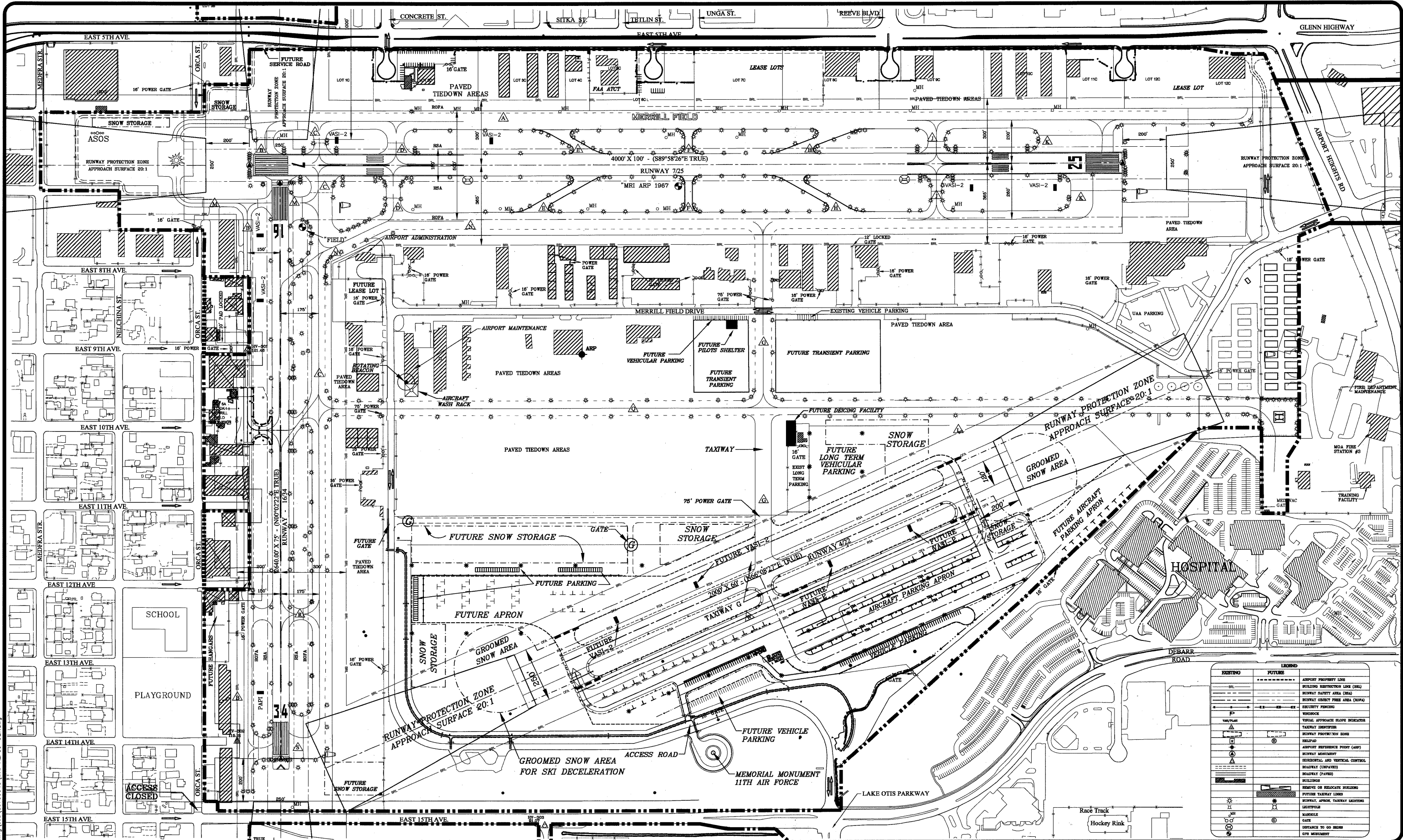
MERRILL FIELD AIRPORT
ANCHORAGE, AK
TERMINAL AREA PLAN

SHEET
8 OF 13

EXISTING FACILITIES		
NO.	FACILITY	ELEVATIONS
1	FOX PAPA LLC	
2A	TAKE FLIGHT ALASKA, INC. (ANTENNA ELEV.)	163.4'
2B	TAKE FLIGHT ALASKA, INC.	152.5'
3	CIVIL AIR PATROL	152.1'
4	SLIP STREAM HANGARS A & B & C	
5	NEW FAA AIR TRAFFIC CONTROL TOWER (ANTENNA ELEV.)	283.4'
6	STATE OF ALASKA	187.2'
7	RAMAK, INC. DBA REEVE AIRMOTIVE	152.9'
8	PARAMOUNT INVESTMENTS LLC	
9	NORTH EDGE LLC	161.5'
10	STODDARD AERO SERVICES, INC.	
11	MUNICIPALITY OF ANCHORAGE	
12	MICHAEL B. SPERNAK & MARITA C. CROSBY (SIGN ELEV.)	146.5'
13	DIMOND D. PARTNERS	143.3'
14	DAN'S HANGARS	151.6'
15	PACIFIC ALASKAN AIRWAYS LLC	153.9'
16	KONTOR DEVELOPMENT	149.1'
17	ACE HANGARS A,B,C,D. (POLE ELEV.)	173.1'
18	AERO TWIN, INC.	154.9'
19	A & W SERVICES (ANTENNA ELEV.)	161.6'
20	UNIVERSITY OF ALASKA, ANCHORAGE	155.1'
21	UNIVERSITY OF ALASKA, ANCHORAGE (LIGHT POLE)	163.6'
22	AERO CENTER PARTNERSHIP	139.2'
23	MUNICIPALITY OF ANCHORAGE	151.8'
24	A.C.E. FLYERS, INC. DBA JAY-HAWK AIR	135.3'
25	EVERGREEN HELICOPTERS OF ALASKA, INC. (ANTENNA ELEV.)	170.0'
26	AERO METRIC, INC.	146.5'
27	T-HANGARS UNITS/20 INDIVIDUAL LEASE LOTS	137.6'
28	FUEL ISLAND	

LEGEND		
EXISTING	FUTURE	
---	---	AIRPORT PROPERTY LINE
---	---	BUILDING RESTRICTION LINE (BRL)
---	---	RUNWAY SAFETY AREA (RSA)
---	---	RUNWAY OBJECT FREE AREA (ROFA)
---	---	SECURITY FENCING
---	---	WINDSOCK
---	---	VISUAL APPROACH SLOPE INDICATOR
---	---	TAXIWAY IDENTIFIER
---	---	RUNWAY PROTECTION ZONE
---	---	HELIPAD
---	---	AIRPORT REFERENCE POINT (ARP)
---	---	RUNWAY MONUMENT
---	---	HORIZONTAL AND VERTICAL CONTROL
---	---	ROADWAY (UNPAVED)
---	---	ROADWAY (PAVED)
---	---	BUILDINGS
---	---	REMOVE OR RELOCATE BUILDING
---	---	RUNWAY, APRON, TAXIWAY LIGHTING
---	---	LIGHTPOLE
---	---	MANHOLE
---	---	GATE
---	---	DISTANCE TO GO SIGNS
---	---	RELOCATED BEACON
---	---	HELIPAD
---	---	GPS MONUMENT

PLOT DATE: 11/15/2012 9:59 AM
FILE NAME: C:\working\sea\0700040\MRI-ALP09-ULT.dwg



EDK	11/24/03	ASBUILT UPDATE
DJG	07/08/08	NEW RUNWAY NUMBERS & 5TH AVE DESIGN
DJG	12/30/08	AIRPORT REDLINES 9-16-2008
DJG	4/30/10	PROPERTY DATA UPDATE
BY	DATE	REVISIONS

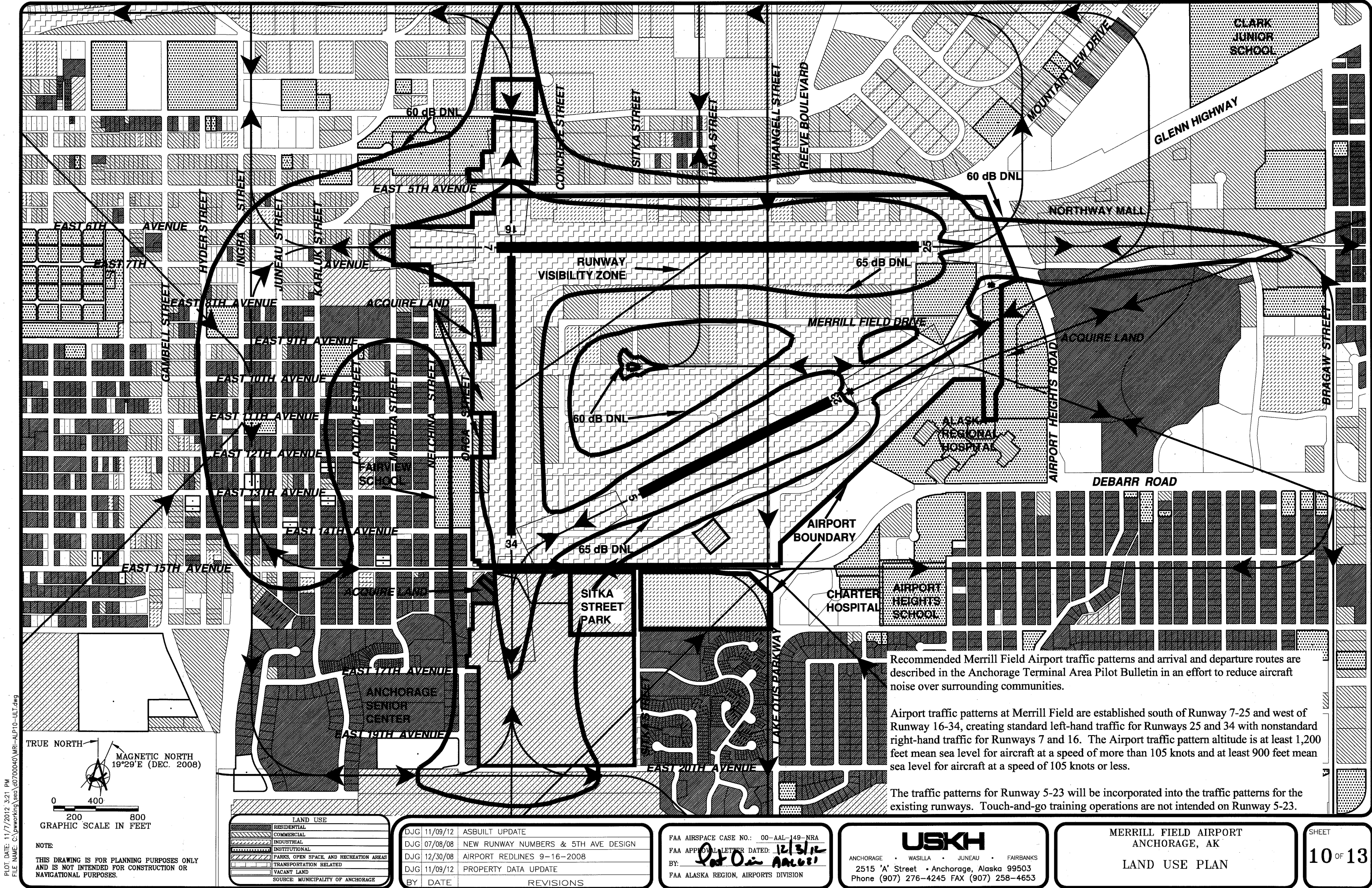
FAA AIRSPACE CASE NO.: 00-AAL-149-NRA
FAA APPROVAL LETTER DATED: 12/14/10
BY: *[Signature]*
FAA ALASKA REGION, AIRPORTS DIVISION

USKH
ANCHORAGE • WASILLA • JUNEAU • FAIRBANKS
2515 'A' Street • Anchorage, Alaska 99503
Phone (907) 276-4245 FAX (907) 258-4653

MERRILL FIELD AIRPORT
ANCHORAGE, AK
AIRPORT ACCESS PLAN

SHEET
9 OF 13

EXISTING	FUTURE	LEGEND
---	---	AIRPORT PROPERTY LINE (BRL)
---	---	BUILDING RESTRICTION LINE (BRL)
---	---	RUNWAY SAFETY AREA (RSA)
---	---	RUNWAY OBJECT FREE AREA (ROFA)
---	---	SECURITY FENCING
---	---	WINDROCK
---	---	VISUAL APPROACH SLOPE INDICATOR
---	---	TAXIWAY IDENTIFIER
---	---	RUNWAY PROTECTION ZONE
---	---	HELIPAD
---	---	AIRPORT REFERENCE POINT (ARP)
---	---	RUNWAY MEASUREMENT
---	---	SECTORIAL AND VERTICAL CONTROL
---	---	ROADWAY (UNPAVED)
---	---	ROADWAY (PAVED)
---	---	BUILDING
---	---	RESERVE OR RELOCATE BUILDING
---	---	FUTURE TAXIWAY LINES
---	---	RUNWAY, APRON, TAXIWAY LIGHTING
---	---	LAKE/POLE
---	---	GATE
---	---	OBSTACLE TO GO BEHIND
---	---	OPEN MEASUREMENT



PLOT DATE: 11/7/2012 3:21 PM
FILE NAME: C:\pwworking\sec\00700040\MRI-ALP10-ULT.dwg

TRUE NORTH
MAGNETIC NORTH
19°29'E (DEC. 2008)

0 400 800
GRAPHIC SCALE IN FEET

NOTE:
THIS DRAWING IS FOR PLANNING PURPOSES ONLY
AND IS NOT INTENDED FOR CONSTRUCTION OR
NAVIGATIONAL PURPOSES.

LAND USE	
[Pattern]	RESIDENTIAL
[Pattern]	COMMERCIAL
[Pattern]	INDUSTRIAL
[Pattern]	INSTITUTIONAL
[Pattern]	PARKS, OPEN SPACE AND RECREATION AREAS
[Pattern]	TRANSPORTATION RELATED
[Pattern]	VACANT LAND
SOURCE: MUNICIPALITY OF ANCHORAGE	

BY	DATE	REVISIONS
DJG	11/09/12	ASBUILT UPDATE
DJG	07/08/08	NEW RUNWAY NUMBERS & 5TH AVE DESIGN
DJG	12/30/08	AIRPORT REDLINES 9-16-2008
DJG	11/09/12	PROPERTY DATA UPDATE

FAA AIRSPACE CASE NO.: 00-AAL-149-NRA
FAA APPROVAL LETTER DATED: 12/3/12
BY: *Pat O. AAL681*
FAA ALASKA REGION, AIRPORTS DIVISION

USKH
ANCHORAGE • WASILLA • JUNEAU • FAIRBANKS
2515 'A' Street • Anchorage, Alaska 99503
Phone (907) 276-4245 FAX (907) 258-4653

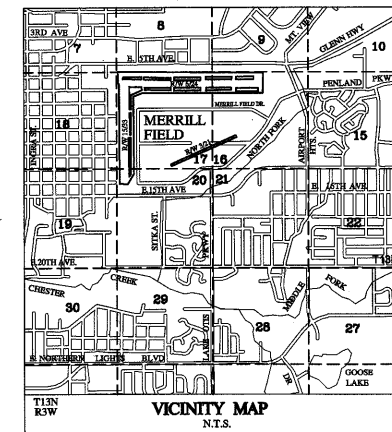
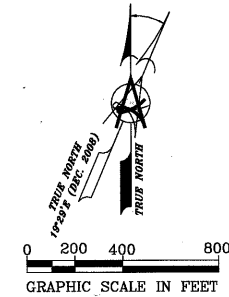
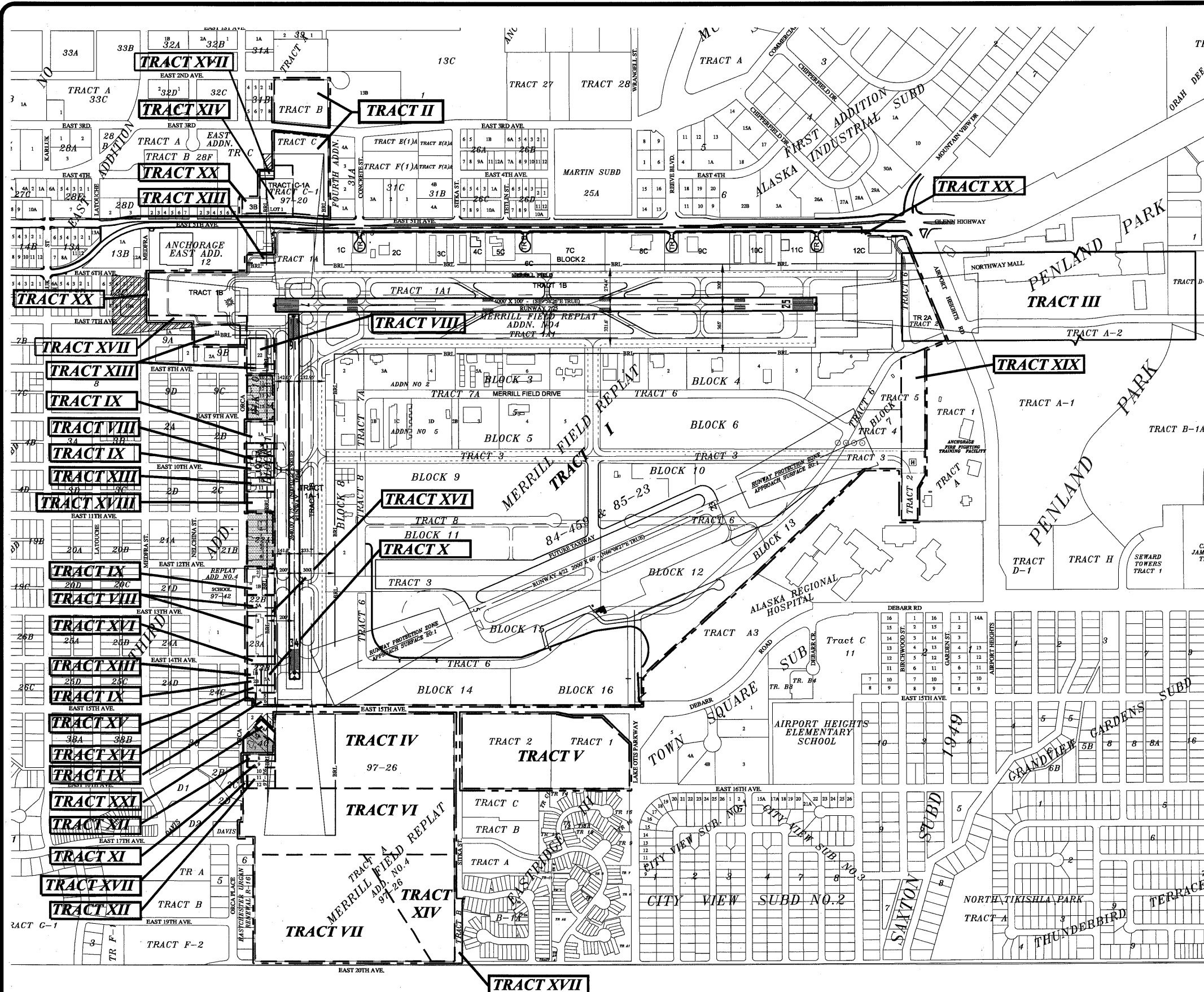
MERRILL FIELD AIRPORT
ANCHORAGE, AK
LAND USE PLAN

SHEET
10 OF 13

Recommended Merrill Field Airport traffic patterns and arrival and departure routes are described in the Anchorage Terminal Area Pilot Bulletin in an effort to reduce aircraft noise over surrounding communities.

Airport traffic patterns at Merrill Field are established south of Runway 7-25 and west of Runway 16-34, creating standard left-hand traffic for Runways 25 and 34 with nonstandard right-hand traffic for Runways 7 and 16. The Airport traffic pattern altitude is at least 1,200 feet mean sea level for aircraft at a speed of more than 105 knots and at least 900 feet mean sea level for aircraft at a speed of 105 knots or less.

The traffic patterns for Runway 5-23 will be incorporated into the traffic patterns for the existing runways. Touch-and-go training operations are not intended on Runway 5-23.



LAND ACQUISITION STATUS

TRACT	DESCRIPTION	TYPE
* I	Replat of Merrill Field - 336.28 acres	Fee Simple - *see below
**** II	Tracts B & C Merrill Field Lease Lots - 7.41 acres	Fee Simple - WD 3/23/43
III	State of Alaska - Patent No. 4535	Avigation Easement 10/31/79 (Expires 1/31/13)
IV	Replat of Merrill Field Portion of Tr. 4 - 16.75 acres	Fee Simple - Fed. Pat. 8/8/58 State Pat. 11/18/68
** V	A Portion of Tract 1 & Tract 2, Fourth Addition to Anchorage - Net Acres 14.95	Fee Simple - State Patent 11/18/68
VI	Replat of Merrill Field Portion of Tr. 4 - 17.38 acres	Fee Simple - Through FAA ADAP Grant 06 & 07 Acquired by WD 4/28/81
VII	Tract 9, Merrill Field Replat Add. No. 1 Resubdivision of Tract 7E & 8E Eastchester Subdivision - 19.16 acres	Fee Simple - Through FAA ADAP Grant 06 & 07 Acquired by Declaration of Taking 1984
VIII	Lots 5-8, Block 10, East Addition AOT; Lot 7, Block 1, Lot 5A, Block 22B, Lots 1-4, 5A & 6A, Block 23A, 3rd Addition AOT - 3.10 acres	Fee Simple - Through FAA AIP 07 Acquired by WD 4/18/86, 10/28/86, 12/10/86, 12/12/86
IX	Lots 1A, 5, 6, 8, 9, Block 1, Lot 1B, Block 22B, Lots 2B, 5, 6, Block 23B, 3rd Addition AOT - 3.19 acres	Fee Simple - Through FAA AIP 08 Acquired by WD 9/25/87, 9/28/87, 10/02/87, 12/01/87
X	Lot 3A, Block 23B, Third Addition - 0.36 acres	Fee Simple - Through FAA AIP 11, Acquired by WD 3/24/89
XI	Lot 9, Block 40, 3rd Addition - 0.24 acres	Fee Simple - Through Gift, Acquired by WD 3/20/89
XII	Lots 8, 10, 11, & 12, Block 40, 3rd Addition - 0.95 acres	Fee Simple - Through FAA AIP 12, Acquired by WD 9/10/90
XIII	South 60 of North 260', Block 11, Lots 1C & 1B, Block 9B, Lot 9, Block 10, East Addition; Lots 10 & 11, Block 1, Lot 1B, Block 23B, 3rd Addition - 2.36 acres	Fee Simple - Through FAA AIP 14, Acquired by WD 1/07/92, 8/16/91, 9/20/91, 10/18/91, 4/03/92 and QCD 1/14/92
**** XIV	Lot 1 of East Fifth Avenue Subdivision; Tract 8E, Resurvey Eastchester Subdivision - 9.37 acres	Fee Simple - Through FAA Grant AIP 16, Acquired by WD 12/04/92, QCD 3/23/93
XV	Lot 4, Block 23B, Third Addition - 0.24 acres	Fee Simple - Through FAA Grant AIP-21, Acquired by WD 3/11/96
*** XVI	Lot 5A, Block 23B, 3rd Addition; and the replat of 13th & 14th Avenues R.O.W. vacation by Plat 97-42, Anchorage Recording District - 0.64 acres	Fee Simple - Through FAA Grant AIP-24, Acquired by WD 8/07/97, plat 97-42 Recorded 6/25/97
XVII	Vacation of Portions of 4th Ave. (.15 acres), 7th Ave & Orca St. (1.14 Ac.) and Sitka St. (.67 Ac.) All replatted by Plat 97-26 - 1.96 acres	Vacation Resolution 96-13A, B, C, & D Recorded 5/6/97
XVIII	South 150 Feet of Block One, Third Addition - 0.72 acres	Fee Simple - Through FAA Grant AIP 43, Acquired by WD 7/10/2007
XIX	East 175 Feet of Tract 5 (2.79 acres), East 175 Feet of Tract 3 (0.61 acres), and Tract 2 (1.17 acres) of Regional Fire Training Station Subdivision Tracts 1 Through 5 Anchorage Recording District PL2008-116 - 4.57 acres	Fee Simple - Land Exchange Agreement, plat 2008-116 recorded 11/17/2008 Designation of Management Authority October 16, 2012
XX	West 130 Feet of Lot 3B, Block 30B (0.34 acres), Portion of Lot 12C, Block 2 (0.06 acres), and Medfra St. R.O.W. Vacation (0.25 acres), Merrill Field Replat Addn. No. 6, PL2009-120 - 0.65 acres	Fee Simple - Land Exchange Agreement, Acquired by QCD 8/10/2012, Vacation Resolution 2007-008, plat 2009-120 recorded 12/30/2009
XXI	Lot 4A, Block 40, 3rd Addition - 0.25 acres	Fee Simple - Through FAA Grant AIP-51, Acquired by WD 8/12/2010

TOTAL ACREAGE = 440.53 ACRES (TRACTS I THROUGH XXI)

* FROM: Warranty Deeds (WD) 7/05/29, 6/10/36, 11/17/42, 2/15/67, Federal Patents 8/08/58 and Airport use Restriction 10/31/79, State Patents 11/13/68 and 11/07/79
3.00 acres released to State of Alaska for Glenn Hwy R.O.W. by QCD 8/10/2012, plat 2009-120
** 0.73 Acres Relinquished to the State of Alaska For Right-of-Way. 11-17-94, Plat 94-135
*** .07 Acres released to the Municipality of Anchorage Dept. of Public Works for street Right-of-Way. Release by WD 07-17-2002.
**** 0.15 acres released to the State of Alaska for Glenn Hwy R.O.W. by QCD 8/10/2012, plat 2009-120
***** 0.21 acres released to the State of Alaska for Glenn Hwy R.O.W. by QCD 8/10/2012, plat 2009-120

LEGEND

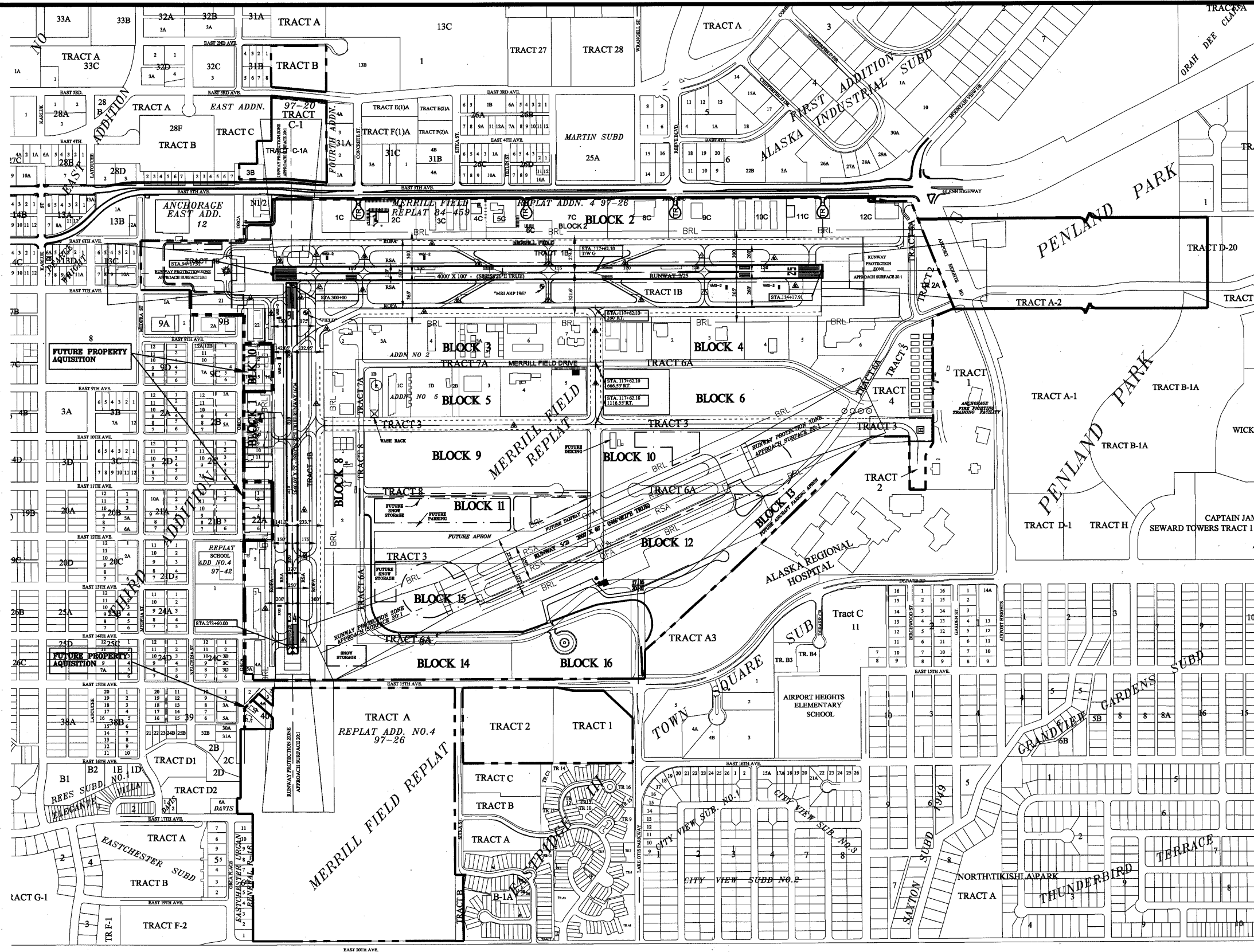
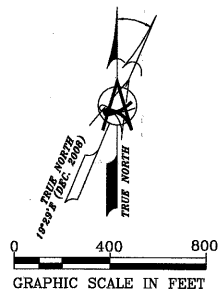
- Current Airport Boundary
- Acquisition Tract Boundaries
- Future Property Acquisition
- Future Avigation Easement Acquisition

BY	DATE	REVISIONS
DJG	11/09/12	ASBUILT UPDATE
DJG	07/08/08	NEW RUNWAY NUMBERS & 5TH AVE DESIGN
DJG	12/30/08	AIRPORT REDLINES 9-16-2008
DJG	11/09/12	PROPERTY DATA UPDATE

FAA AIRSPACE CASE NO.: 00-AAL-149-NRA
FAA APPROVAL LETTER DATED: 12/11/12
BY: *R. A. AALORI*
FAA ALASKA REGION, AIRPORTS DIVISION

USKH
ANCHORAGE • WASILLA • JUNEAU • FAIRBANKS
2515 'A' Street • Anchorage, Alaska 99503
Phone (907) 276-4245 FAX (907) 258-4653

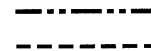
MERRILL FIELD AIRPORT
ANCHORAGE, AK
PROPERTY MAP-EXHIBIT "A"



LEGEND

Current Airport Boundary

Acquisition Tract Boundaries



BY	DATE	REVISIONS
DJG	11/09/12	ASBUILT UPDATE
DJG	07/08/08	NEW RUNWAY NUMBERS & 5TH AVE DESIGN
DJG	12/30/08	AIRPORT REDLINES 9-16-2008
DJG	11/09/12	PROPERTY DATA UPDATE

FAA AIRSPACE CASE NO.: 00-AAL-149-NRA
FAA APPROVAL LETTER DATED: 12/31/12
BY: *AD Olin* *pac021*
FAA ALASKA REGION, AIRPORTS DIVISION

USKH
ANCHORAGE • WASILLA • JUNEAU • FAIRBANKS
2515 'A' Street • Anchorage, Alaska 99503
Phone (907) 276-4245 FAX (907) 258-4653

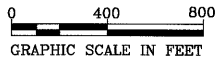
MERRILL FIELD AIRPORT
ANCHORAGE, AK
LAND OCCUPANCY DRAWING

SHEET
12 OF 13

PLOT DATE: 11/14/2012 4:40 PM
FILE NAME: C:\pwworking\sec\0700040\MR-ALP13-ULT.dwg

LAND OCCUPANCY TABLE

LOT & BLOCK	LESSEE	ADDRESS	AREA	EXPIRES
BLOCK 1	THIRD ADDITION			
BLOCK 1, LOT 1A	MOA		31,200 S.F.	
BLOCK 1, LOT 10	MOA		10,393 S.F.	
BLOCK 1, LOT 11	MOA		10,393 S.F.	
BLOCK 1, SOUTH 150'	MOA		31,179 S.F.	
BLOCK 40	THIRD ADDITION			
BLOCK 40, LOT 4A	MOA		10,958 S.F.	
BLOCK 1	MERRILL FIELD REPLAT ADDN. NO. 6			
BLOCK 1, LOT 5A	JANSSEN HANGARS LLC	1520 POST ROAD, ANCHORAGE, AK. 99501	39,001 S.F.	7/31/2063
BLOCK 2	MERRILL FIELD REPLAT ADDN. NO. 6			
BLOCK 2, LOT 1C	FOX PAPA LLC	P.O. BOX 1514, GIRDWOOD, AK 99587	80,664 S.F.	7/31/2065
BLOCK 2, LOT 2C	DAVE AND JACQUELYN WILDER	1740 EAST 5TH AVE. ANCHORAGE, AK 99501	120,974 S.F.	9/30/2059
BLOCK 2, LOT 3C	SLIPSTREAM HANGARS CONDO ASSOC.	1812 EAST 5TH AVE. ANCHORAGE, AK 99501	114,393 S.F.	8/31/2059
BLOCK 2, LOT 4C	MOA		31,592 S.F.	
BLOCK 2, LOT 5C	FAA/NEW TOWER	ATTEN: EDDA HAHN AAL-33, 222 WEST 7TH AVE. BOX 14 ANCHORAGE, AK 99501	44,911 S.F.	5/31/2016
BLOCK 2, LOT 6C	MOA		51,448 S.F.	
BLOCK 2, LOT 7C	PARAMOUNT INVESTMENTS, LLC	1801 EAST 5TH AVE. ANCHORAGE, AK 99501	136,337 S.F.	12/31/2066
BLOCK 2, LOT 8C	STATE OF ALASKA	P.O. BOX 196900, ANCHORAGE, AK 99519	125,523 S.F.	1/31/2013
BLOCK 2, LOT 9C	RAMAK, INC	2425 E. 5TH AVE., ANCHORAGE, AK 99501	120,543 S.F.	2/28/2064
BLOCK 2, LOT 10C	CHUGACH HANGARS OWNERS ASSOC.	DAVE COTTRELL 3601 'C' ST. STE 600, ANCHORAGE, AK 99503	107,205 S.F.	7/31/2065
BLOCK 2, LOT 11C	NORTH EDGE LLC	2841 DEBAR ROAD, STE. 23, ANCHORAGE, AK 99504	67,161 S.F.	4/30/2065
BLOCK 2, LOT 12C	STODDARD AERO SERVICE, INC	2550 EAST 5TH AVE. ANCHORAGE, AK 99501	178,187 S.F.	2/28/2065
BLOCK 3	MERRILL FIELD REPLAT			
BLOCK 3, LOT 1	AERO CENTER LLC	AERO CENTER LLC/TED MARCINEK 900 MARRILL FIELD DR. ANCH.,AK 99501	82,945 S.F.	8/31/2059
BLOCK 3, LOT 2	MUNICIPALITY OF ANCHORAGE	MFA MANAGER'S OFFICE (OLD FAA TOWER)	92,662 S.F.	
BLOCK 3, LOT 3A	MICHAEL B SPERNAK/MARITA C CROSBY	SPERNAK AIRWAYS INC. BOX 102255 ANCHORAGE,AK 99501	102,469 S.F.	6/30/2019
BLOCK 3, LOT 4	DIMOND D PARTNERS	8530 DIMOND D CIRCLE ANCHORAGE, AK 99515	110,304 S.F.	6/30/2019
BLOCK 3, LOT 5A	DAN'S HANGARS CONDO ASSOC.	DAN HOLLINGSWORTH 1931 MERRILL FIELD DR. ANCHORAGE, AK 99501	110,342 S.F.	5/31/2061
BLOCK 3, LOT 6	PACIFIC ALASKAN AIRWAYS LLC	2015 MERRILL FIELD DR. ANCHORAGE, AK 99501	110,271 S.F.	8/31/2058
BLOCK 3, LOT 7	KONTOR DEVELOPMENT LLC	2113 MERRILL FIELD DR. ANCHORAGE, AK 99501	81,826 S.F.	6/30/2015
BLOCK 4	MERRILL FIELD REPLAT			
BLOCK 4, LOT 1	ACE HANGARS OWNERS ASSOC.	C/O BONANZA REALTY 2825 ROSE ST. STE 202, ANCHORAGE, AK 99508	110,360 S.F.	11/30/2055
BLOCK 4, LOT 2	AERO TWIN INC	VINCENT CESTNIK 2403 MERRILL FIELD DR. ANCHORAGE, AK 99501	89,775 S.F.	3/01/2032
BLOCK 4, LOT 3	A & W SERVICES	2425 MERRILL FIELD DR. ANCHORAGE, AK 99501	122,850 S.F.	5/31/2060
BLOCK 4, LOT 4	UNIVERSITY OF ALASKA, ANCHORAGE	2555 MERRILL FIELD DRIVE ANCHORAGE, AK 99501	102,509 S.F.	4/30/2060
BLOCK 4, LOT 5	UNIVERSITY OF ALASKA, ANCHORAGE	2555 MERRILL FIELD DRIVE ANCHORAGE, AK. 99501	72,655 S.F.	4/30/2060
BLOCK 4, LOT 6	UNIVERSITY OF ALASKA, ANCHORAGE	2811 MERRILL FIELD DRIVE ANCHORAGE, AK 99501	265,117 S.F.	7/31/2035
BLOCK 4, LOT 7	UNIVERSITY OF ALASKA, ANCHORAGE	2811 MERRILL FIELD DRIVE ANCHORAGE, AK 99501	79,318 S.F.	7/31/2035
BLOCK 5	MERRILL FIELD REPLAT			
BLOCK 5, LOT 1B	MOA		49,141 S.F.	
BLOCK 5, LOT 1C	KRAFT,EDWIN	BOX 244991 ANCHORAGE, AK. 99524	75,396 S.F.	6/30/2028
BLOCK 5, LOT 1C	CUNNINGHAM, PAUL	BOX 221942 ANCHORAGE, AK. 99522		
BLOCK 5, LOT 1C	MOON, KEN	P.O. BOX 1085, CAMAS, WA. 98607		
BLOCK 5, LOT 1C	JOSEPH PALMER	P.O. BOX 100402, ANCHORAGE, AK 99510		
BLOCK 5, LOT 1C	HANSON, ROBERT	4991 EAST 5TH AVE. ANCHORAGE, AK 99508		
BLOCK 5, LOT 1C	RUDDERROW, PRESTON	13340 RIDGEWOOD CIR, ANCHORAGE, AK 99516		
BLOCK 5, LOT 1C	SIRES, ROGER	612 HIGHLAND CIR, ANCHORAGE, AK 99518		
BLOCK 5, LOT 1C	EDWARDS, STEPHEN	3847 GUNFLINT TRAIL, WASILLA, AK 99654		
BLOCK 5, LOT 1C	TOWER PROPERTIES	205 E. DIMOND #515 ANCHORAGE, AK. 99515		
BLOCK 5, LOT 1C	WAGGOOD, CLAYTON	BOX 111822 ANCHORAGE, AK 99511		
BLOCK 5, LOT 1C	BLEDSE, MARK	2525 BLUEBERRY SUITE 202 ANCHORAGE, AK 99503		
BLOCK 5, LOT 1C	POST, BILL	P.O. BOX 271, TALKEETNA, AK 99676		
BLOCK 5, LOT 1C	MICHELLT, MATT	941 JOHAM CIR, ANCHORAGE, AK 99515		
BLOCK 5, LOT 1C	PALMER, JOE	P.O. BOX 100402, ANCHORAGE, AK 99510		
BLOCK 5, LOT 1C	CORP. OF CATHOLIC ARCHBISHOP	225 CORDOVA ST. BUILD. B ANCH. AK 99501		
BLOCK 5, LOT 1C	HUDSON, DONALD	7130 CHESTER HEIGHTS CIRCLE, ANCHORAGE, AK 99504		
BLOCK 5, LOT 1C	GILL, JAMES	1320 W. 77TH AVE., ANCHORAGE, AK 99518		
BLOCK 5, LOT 1C	ROTH, BILL	7954 RESURRECTION DRIVE, ANCHORAGE, AK 99504		
BLOCK 5, LOT 1C	BOSLOUGH CONSTRUCTION, INC	730 I STREET, SUITE 200, ANCHORAGE, AK 99501		
BLOCK 5, LOT 1C	JOHNSTONE, KARL	18618 SNOW PLOVER CIR., ANCHORAGE, AK 99516		
BLOCK 5, LOT 1D	A.C.E. FLYERS,INC. DBA JAY HAWK AIR	1842 MERRILL FIELD DR. ANCHORAGE, AK 99501	110,318 S.F.	5/1/2016
BLOCK 5, LOT 2B	MOA		18,418 S.F.	
BLOCK 5, LOT 3	EVERGREEN HELICOPTERS OF AK	3850 THREEMILE LANE MCMINNVILLE OR. 97128	110,317 S.F.	1/31/2021
BLOCK 5, LOT 4	AERO-METRIC, INC.	2014 MERRILL FIELD DR. ANCHORAGE, AK. 99501	137,901 S.F.	12/31/2064
BLOCK 5, LOT 5	MOA		95,500 S.F.	



DJG	11/09/12	ASBUILT UPDATE
DJG	07/08/08	NEW RUNWAY NUMBERS & 5TH AVE DESIGN
DJG	12/30/08	AIRPORT REDLINES 9-16-2008
DJG	11/09/12	PROPERTY DATA UPDATE
BY	DATE	REVISIONS

FAA AIRSPACE CASE NO.: 00-AAL-149-NRA
FAA APPROVAL LETTER DATED: 12-3-12
BY: *Pat Olin* AAL621
FAA ALASKA REGION, AIRPORTS DIVISION

USKH
ANCHORAGE • WASILLA • JUNEAU • FAIRBANKS
2515 'A' Street • Anchorage, Alaska 99503
Phone (907) 276-4245 FAX (907) 258-4653

MERRILL FIELD AIRPORT
ANCHORAGE, AK
LAND OCCUPANCY TABLE

SHEET
13 OF 13

LAND OCCUPANCY TABLE

LOT & BLOCK	LESSEE	ADDRESS	AREA	EXPIRES
BLOCK 6	MERRILL FIELD REPLAT			
BLOCK 6	MOA		13.83 AC.	
BLOCK 8	MERRILL FIELD REPLAT			
BLOCK 8, LOT 1	EXECUTIVE HANGARS	980 MERRILL FIELD DR. ANCHORAGE, AK 99501	72,502 S.F.	9/30/2059
BLOCK 8, LOT 2	AERO TECH FLIGHT SCHOOL, INC	1100 MERRILL FIELD DR. ANCHORAGE, AK 99501	126,074 S.F.	5/13/2023
BLOCK 9	MERRILL FIELD REPLAT			
BLOCK 9	MOA		14.73 AC.	
BLOCK 10	MERRILL FIELD REPLAT			
BLOCK 10	MOA		13.54 AC.	
BLOCK 11	MERRILL FIELD REPLAT			
BLOCK 11	MOA		14.73 AC.	
BLOCK 12	MERRILL FIELD REPLAT			
BLOCK 12	MOA		12.55 AC.	
BLOCK 13	MERRILL FIELD REPLAT			
BLOCK 13	MOA		8.23 AC.	
BLOCK 14	MERRILL FIELD REPLAT			
BLOCK 14	MOA		11.55 AC.	
BLOCK 15	MERRILL FIELD REPLAT			
BLOCK 15	MOA		17.46 AC.	
BLOCK 16	MERRILL FIELD REPLAT			
BLOCK 16	MOA		9.68 AC.	
BLOCK 30B	MERRILL FIELD REPLAT ADDN. NO. 6			
BLOCK 30B, LOT, 3B	MOA	NORTH OF 5th AVE.	0.47 AC.	
LOTS	FAIRVIEW SCHOOL ADDN. NO. 1			
LOT 2	MOA		49,340 S.F.	
LOT 3	NORTH JANSSEN HANGARS OWNERS	1520 POST ROAD, ANCHORAGE, AK 99501	53,765 S.F.	6/30/2061
LOT 4A	JANSSEN HANGARS OWNERS ASSOC.	1520 POST ROAD, ANCHORAGE, AK 99501	45,758 S.F.	11/30/2060
LOT 21	MERRILL FIELD ADD. NO. 4	MOA	58,408 S.F.	
LOT 22	AIRPORT DEVELOPMENT CORP.	BOX 672043 CHUCIAK AK. 99567	38,700 S.F.	9/30/2032
TRACTS				
TRACT 1 & 2	MERRILL FIELD ADDN. NO. 4	15TH AVENUE	14.95 AC.	
TRACT 1B	MERRILL FIELD REPLAT ADDN. NO. 6	RUNWAYS 7/25 AND 16/34	94.83 AC.	
TRACT 3	MERRILL FIELD REPLAT	TAXIWAY Q	18.55 AC.	
TRACT 2A	MERRILL FIELD REPLAT ADDN. NO. 6	AIRPORT HEIGHTS ROAD AND MERRILL FIELD DRIVE	1.94 AC.	
TRACT 6A	MERRILL FIELD REPLAT ADDN. NO. 6	MERRILL FIELD DRIVE	14.63 AC.	
TRACT 7A	MERRILL FIELD ADDN. NO. 2	MERRILL FIELD DRIVE	2.84 AC.	
TRACT 8	MERRILL FIELD REPLAT	MERRILL FIELD DRIVE	3.22 AC.	
TRACT A	MERRILL FIELD ADDN. NO. 4	15TH AVENUE	62.33 AC.	
TRACT B	MERRILL FIELD ADDN. NO. 4	SITKA STREET	29,310 S.F.	
TRACT B	MERRILL FIELD LEASE LOTS C-27	2ND AND 3RD AVENUE	2.93 AC.	
TRACT C-1A	MERRILL FIELD REPLAT ADDN. NO. 6	NORTH OF 5TH AVENUE	6.09 AC.	
TRACT A	MERRILL FIELD REPLAT ADDN. NO. 6	TRACTS A, B, C & D ARE FOR THE CUL-DE-SACS LOCATED IN BLOCK 2	15,000 S.F.	
TRACT B	MERRILL FIELD REPLAT ADDN. NO. 6		19,497 S.F.	
TRACT C	MERRILL FIELD REPLAT ADDN. NO. 6		15,000 S.F.	
TRACT D	MERRILL FIELD REPLAT ADDN. NO. 6		15,000 S.F.	
TRACT 2	MOA-REGIONAL FIRE TRAINING STA. SUBD.	TRACTS 2, 3, 4 & 5 ARE APRON & TAXIWAY EAST SIDE APT.	1.17 AC.	
TRACT 3	MOA-REGIONAL FIRE TRAINING STA. SUBD.		2.25 AC.	
TRACT 4	MOA-REGIONAL FIRE TRAINING STA. SUBD.		2.20 AC.	
TRACT 5	MOA-REGIONAL FIRE TRAINING STA. SUBD.		4.09 AC.	