



Municipality of Anchorage

**2018 Approved
Municipal Utilities / Enterprise Activity
Anchorage Community Development
Authority
Operating and Capital Budgets**

**Ethan Berkowitz, Mayor
Anchorage, Alaska**



Municipality of Anchorage

Office of the Mayor

Ethan Berkowitz, Mayor

September 30, 2017

Dear Residents:

Enclosed are the proposed 2018 Municipal Utilities and Enterprise Departments Operating Budgets and their respective 2018-2023 Capital Budgets and Program.

Municipal owned utilities provide residents and businesses safe water, dependable electricity, and the collection and disposal of waste. Their efforts to provide outstanding and efficient services and infrastructure at affordable rates will continue.

Utilities are subject to both oversight from the Regulatory Commission of Alaska and review from the Assembly Utility and Enterprise Committee.

These proceedings are open to the public and we encourage community members to participate in these discussions.

Regards,

A handwritten signature in cursive script that reads "Ethan".

Ethan Berkowitz

MUNICIPALITY OF ANCHORAGE

ETHAN BERKOWITZ, MAYOR

ASSEMBLY

| | | |
|-----------------------------|-------------------------|-----------------------|
| Dick Traini, Chair (2019) | Forrest Dunbar (2019) | Felix Rivera (2020) |
| Christopher Constant (2020) | Fred Dyson (2020) | Tim Steele (2020) |
| Eric Croft (2019) | Suzanne LaFrance (2020) | John Weddleton (2019) |
| Amy Demboski (2019) | Pete Petersen (2020) | |

BUDGET ADVISORY COMMISSION

| | | |
|------------------------------|------------------------------|------------------------|
| Alfred Tamagni, Chair (2018) | Tasha Hotch (2019) | Joe Riggs (2018) |
| Lois Epstein (2017) | Carla McConnell (2019) | Karl von Lührte (2018) |
| Bob Griffin (2017) | Shirley Nelson (2018) | Jon Watkins (2019) |
| | Austin Quinn-Davidson (2019) | |

OFFICE OF MANAGEMENT AND BUDGET

Lance Wilber, Director

| | | |
|-----------------|-------------------|-------------------|
| Marilyn Banzhaf | Christine Chesnut | Courtney Petersen |
| Natalia Meyers | Darlene Williams | |



MUNICIPALITY OF ANCHORAGE

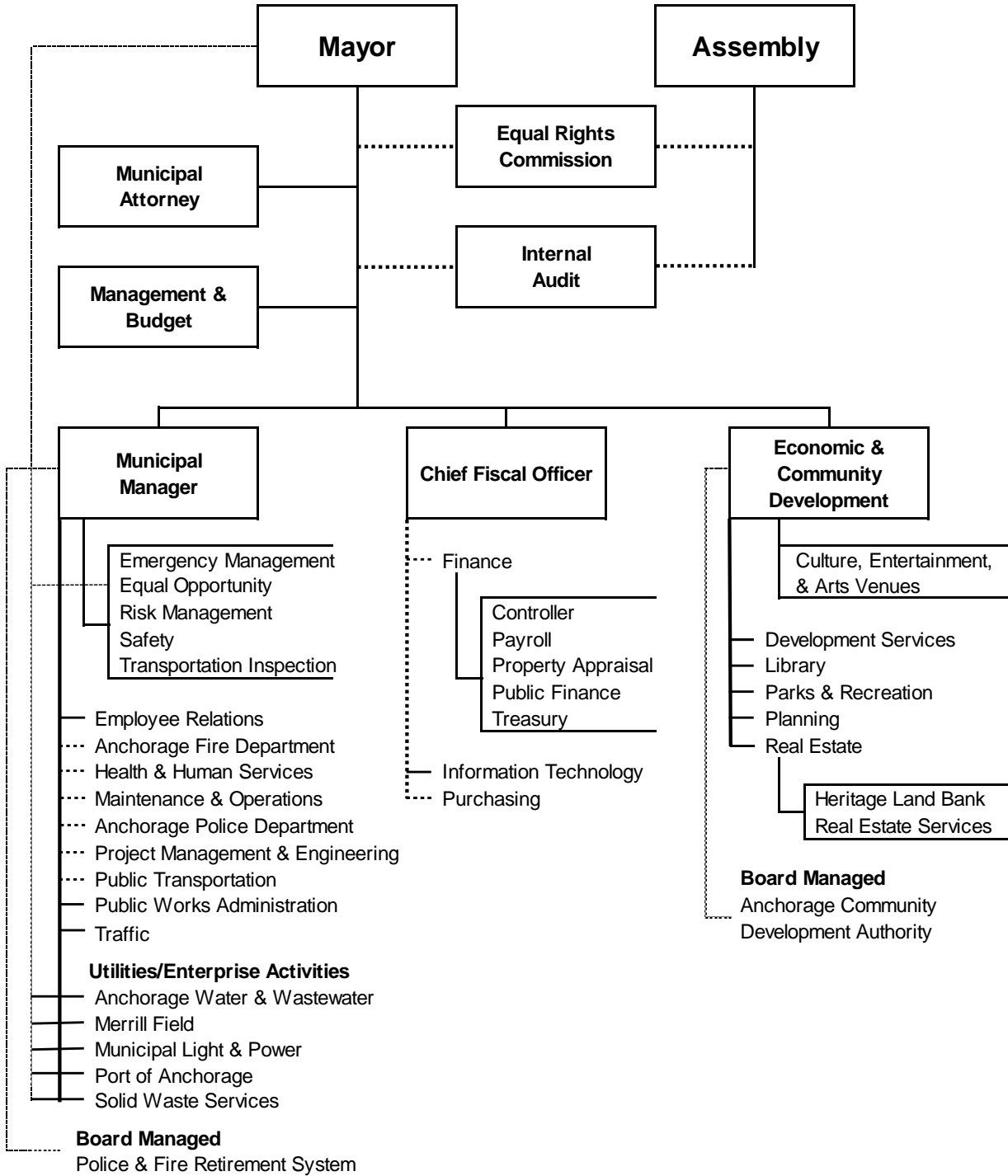


Table of Contents

| | <u>Page</u> |
|---|-------------|
| OVERVIEW | 1 |
| | |
| I. ANCHORAGE WATER & WASTEWATER UTILITY | |
| Organization Chart | AWWU - 1 |
| Organizational Overview | AWWU - 2 |
| Business Plan..... | AWWU - 4 |
| Performance.Value.Results..... | AWWU - 5 |
| Highlights and Future Events | AWWU - 10 |
| External Impacts..... | AWWU - 13 |
| Workforce Projections | AWWU - 14 |
| Water Utility 8-Year Summary..... | AWWU - 15 |
| Water Utility Statement of Revenues and Expenses | AWWU - 16 |
| Water Utility Reconciliation to Prior Year Budget..... | AWWU - 17 |
| Water Utility Capital Improvement Program..... | AWWU - 18 |
| Water Utility Capital Improvement Budget | AWWU - 19 |
| Water Utility Statement of Cash Sources and Uses..... | AWWU - 20 |
| Wastewater Utility 8-Year Summary | AWWU - 21 |
| Wastewater Utility Statement of Revenues and Expenses | AWWU - 22 |
| Wastewater Utility Reconciliation to Prior Year Budget..... | AWWU - 23 |
| Wastewater Utility Capital Improvement Program | AWWU - 24 |
| Wastewater Utility Capital Improvement Budget..... | AWWU - 25 |
| Wastewater Utility Statement of Cash Sources and Uses | AWWU - 27 |
| Profile | AWWU - 28 |
| | |
| II. MERRILL FIELD AIRPORT | |
| Organization Chart | MF - 1 |
| Organizational Overview | MF - 2 |
| Business Plan..... | MF - 3 |
| Performance.Value.Results..... | MF - 5 |
| Highlights and Future Events | MF - 10 |
| External Impacts..... | MF - 11 |
| Workforce Projections | MF - 13 |
| 8-Year Summary | MF - 14 |
| Statement of Revenues and Expenses | MF - 15 |
| Reconciliation to Prior Year Budget | MF - 16 |
| Capital Improvement Program | MF - 17 |
| Capital Improvement Budget..... | MF - 18 |
| Statement of Cash Sources and Uses | MF - 19 |
| Profile | MF - 20 |

Table of Contents

| | <u>Page</u> |
|---|-------------|
| III. MUNICIPAL LIGHT & POWER | |
| Organization Chart | MLP - 1 |
| Organizational Overview | MLP - 2 |
| Business Plan..... | MLP - 7 |
| Performance.Value.Results..... | MLP - 9 |
| Highlights and Future Events | MLP - 15 |
| External Impacts..... | MLP - 16 |
| Workforce Projections | MLP - 17 |
| 8-Year Summary | MLP - 18 |
| Electric Statement of Revenues and Expenses | MLP - 19 |
| Electric Reconciliation to Prior Year Budget..... | MLP - 20 |
| Gas Statement of Revenues and Expenses | MLP - 21 |
| Gas Reconciliation to Prior Year Budget..... | MLP - 22 |
| Capital Improvement Program | MLP - 23 |
| Capital Improvement Budget..... | MLP - 24 |
| Statement of Cash Sources and Uses | MLP - 25 |
| Profile | MLP - 26 |
| IV. PORT OF ANCHORAGE | |
| Organization Chart | PORT - 1 |
| Organizational Overview | PORT - 2 |
| Business Plan..... | PORT - 3 |
| Performance.Value.Results..... | PORT - 5 |
| Highlights and Future Events | PORT - 7 |
| External Impacts..... | PORT - 8 |
| Workforce Projections | PORT - 9 |
| 8-Year Summary | PORT - 10 |
| Statement of Revenues and Expenses..... | PORT - 11 |
| Reconciliation to Prior Year Budget | PORT - 12 |
| Capital Improvement Program | PORT - 13 |
| Capital Improvement Budget..... | PORT - 14 |
| Statement of Cash Sources and Uses | PORT - 15 |
| Profile | PORT - 16 |

Table of Contents

| | <u>Page</u> |
|--|-------------|
| V. SOLID WASTE SERVICES | |
| Organization Chart | SWS - 1 |
| Organizational Overview | SWS - 2 |
| Business Plan..... | SWS - 7 |
| Performance.Value.Results..... | SWS - 8 |
| Highlights and Future Events | SWS - 19 |
| External Impacts..... | SWS - 21 |
| Workforce Projections | SWS - 23 |
| Disposal 8-Year Summary | SWS - 24 |
| Disposal Statement of Revenues and Expenses..... | SWS - 25 |
| Disposal Reconciliation to Prior Year Budget | SWS - 26 |
| Disposal Capital Improvement Program | SWS - 27 |
| Disposal Capital Improvement Budget..... | SWS - 28 |
| Disposal Statement of Cash Sources and Uses | SWS - 29 |
| Refuse Collections 8-Year Summary | SWS - 30 |
| Refuse Collections Statement of Revenues and Expenses..... | SWS - 31 |
| Refuse Collections Reconciliation to Prior Year Budget | SWS - 32 |
| Refuse Collections Capital Improvement Program | SWS - 33 |
| Refuse Collections Capital Improvement Budget..... | SWS - 34 |
| Refuse Collections Statement of Cash Sources and Uses | SWS - 35 |
| Profile | SWS - 36 |
| VI. Anchorage Community Development Authority | |
| Organization Chart | ACDA - 1 |
| Organizational Overview | ACDA - 2 |
| Statement of Revenues and Expenses..... | ACDA - 5 |
| Capital Improvement Budget..... | ACDA - 6 |
| Statement of Cash Sources and Uses | ACDA - 7 |