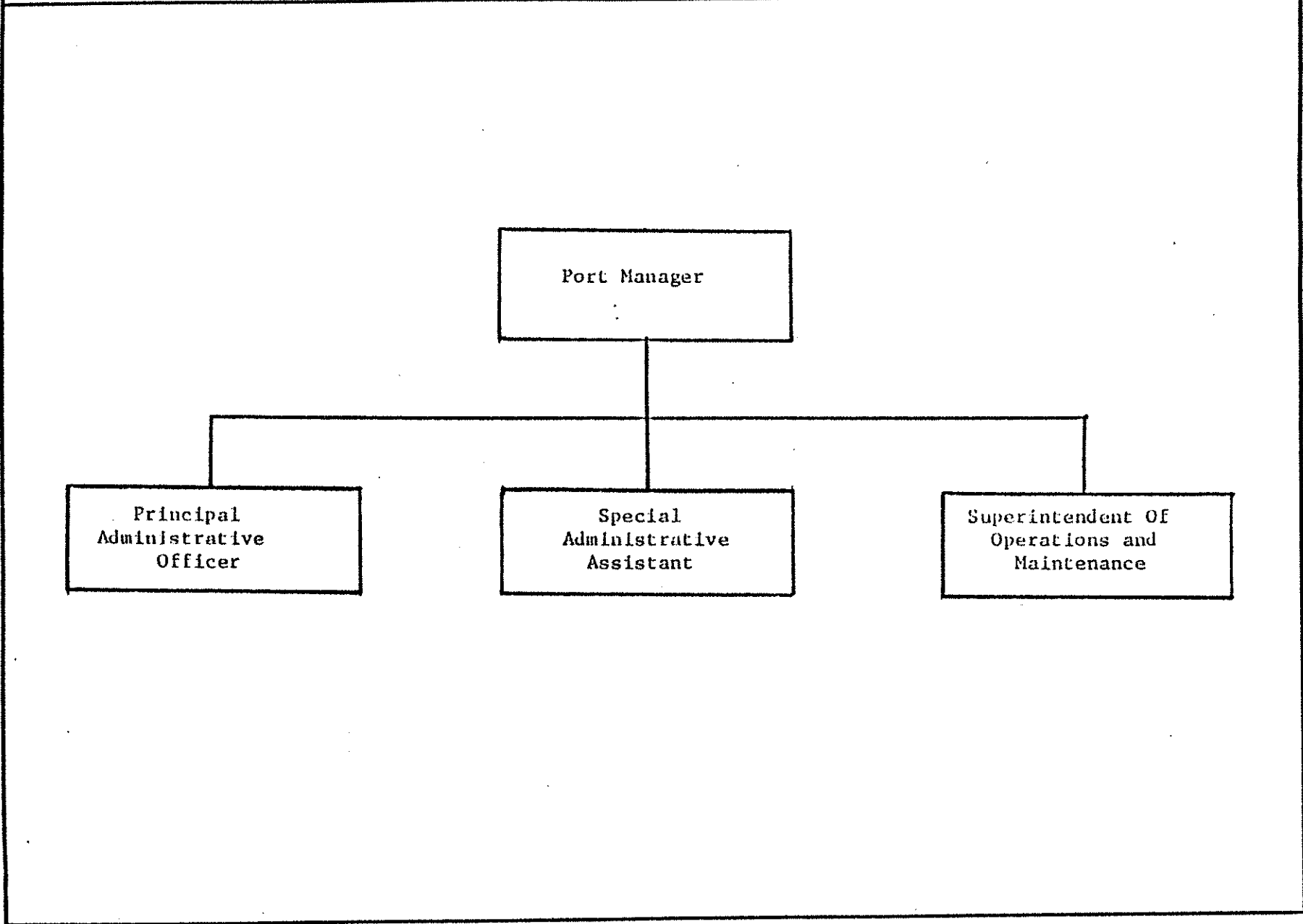


# **PORT OF ANCHORAGE**

MUNICIPALITY OF ANCHORAGE

Public Utilities	Unit No. 8000	Utility PORT OF ANCHORAGE	Unit No. 8970	Division	Unit No.
------------------	------------------	------------------------------	------------------	----------	----------



Public Utilities	Unit No	Utility	Unit No	Division	Unit No.
Port of Anchorage - 1987	8000	Port of Anchorage	8970		

### MISSION

Provide a modern, efficient Port facility for the movement of goods into and out of Southcentral Alaska. Expand and maintain existing property, facilities and equipment to meet growth in established marine trade and to handle new cargo movement. Support and assist increases in cargo movement that will aid and stimulate the economy and quality of life of Anchorage. Broaden the use and public benefit derived from the waterfront resources of Southcentral Alaska.

### MAJOR GOALS

The goals of the Port of Anchorage are to:

1. Provide facilities for direct water transportation of commercial cargos to Anchorage, the Railbelt and the balance of Alaska.
2. Manage and maintain the facilities in a manner that enables carriers to operate efficiently, thereby holding down transportation costs for consumers.
3. Promote the movement of cargos that encourage sound economic development with increased focus on Pacific Rim Trade.
4. Insure the future viability of the Port by husbanding resources, monitoring transportation activities statewide and by conserving Anchorage's limited waterfront for marine-related activities.
5. Heighten public awareness and use of the waterfront by facilitating access to the public waterfront area south of Ship Creek and by aiding safe viewing of cargo operations.

### EXTERNAL FACTORS AFFECTING THE PORT

1. Tightening of the economy and its impact on marine transportation.
2. Population change which directly affects marine transportation companies.
3. Fluctuating demand for developed Port land by marine transportation companies.

MUNICIPALITY OF ANCHORAGE

PAGE

Public Utilities	Unit No.	Utility	Unit No.	Division	Unit No.
Port of Anchorage - 1987	8000	Port of Anchorage	8970		

EXTERNAL FACTORS AFFECTING THE PORT (CONTINUED)

4. Increased capacity by new and/or expanding marine carriers calling at competitive Southcentral ports.
5. Entitlement of general public to use a portion of Anchorage waterfront for recreational and other public purposes.
6. Pressure to develop additional marine terminals in Southcentral Alaska.

PLANNING ASSUMPTIONS

The following assumptions have been used in developing the Port's 1987-1992 plans. They are not intended to be a fixed course of action. They are, however, the best data available at this stage of planning.

1. Tonnage Growth

Intensely competitive Southcentral Ports and carriers will impede general cargo growth at the Port of Anchorage.

1987 general cargo will equal that of 1986 and increase by 1% each year thereafter.

Bulk petroleum tonnage will remain constant during the 1987-1992 period.

Public Utilities	Unit No	Utility	Unit No	Division	Unit No.
Port of Anchorage - 1987	8000	Port of Anchorage	8970		

Port Tonnage Estimates (Millions of Tons)

	<u>1987</u>	<u>1988</u>	<u>1989</u>	<u>1990</u>	<u>1991</u>	<u>1992</u>
General	1.27	1.28	1.30	1.31	1.32	1.33
POL	<u>.30</u>	<u>.30</u>	<u>.30</u>	<u>.30</u>	<u>.30</u>	<u>.30</u>
Totals	1.57	1.58	1.60	1.61	1.62	1.63

2. Sea-Land Service, Inc. will replace its ships now in service with larger vessels.
3. The private sector role in financing Port capital projects will continue to eclipse grant funding.

OBJECTIVES/PROGRAMS

1. Acquire and Develop Additional Staging and Storage Areas

- . Acquire adjacent federal and state tidelands for new staging area construction.
- . Participate in the development of marine commerce activities north of Ship Creek.

2. Maintain, Renew and Expand Existing Port Facilities

Major Projects:	Cost (Millions)
. Annual fender pile and cathodic protection anode replacement	.1
. Completion of Tidewater Road upgrade.	1.0
. Public access implementation	.15
. Reclamation of state and federal tidelands	9.7
. Construction of intermodal yard on Lot 9-B.	3.5

MUNICIPALITY OF ANCHORAGE

PAGE

Public Utilities	Unit No	Utility	Unit No.	Division	Unit No.
Port of Anchorage - 1987	8000	Port of Anchorage	8970		

3. Develop Long Range Financial Plans and Programs

- Ensure that costs of projects financed by Revenue Bonds are recoverable and a targeted rate of return is established for each project.

4. Public Waterfront Development

- Complete the work of the Ship Creek Steering Committee, including tidelands Master Plan and Ship Creek Landing development plan.
- Continue interim development plan in tidelands, placing fill and installing utilities and access.
- Solicit developer interest in the Ship Creek project.

5. Expand Marketing Plan

- Direct marketing activity to heighten the public's perception of Port's role in Alaska's economy.
- Promote Port activity by developing a foreign trade zone encouraging local economic activity and statewide sub-zone activity.
- Investigate improving Pacific Rim transshipments with impacted air, sea and land carriers.
- Promote the Port to compatible industrial clients and actively pursue an expansion area for the Port.
- Aid existing carriers by investigating potential markets for backhaul.

6. Continue and Expand Organizational and Staff Development Efforts

- Develop maintenance and administrative skills utilizing municipal training work shops, available local university courses and other training programs available in the private sector.

Public Utilities	Unit No	Utility	Unit No	Division	Unit No
Port of Anchorage - 1987	8000	Port of Anchorage	8970		

- . Conduct regular work sessions on the Port's values, norms and on its objectives and programs.
- . Involve staff at all levels in development of contract requirements affecting their work and Port efficiency.
- . Emphasize teamwork concept throughout the department.

7. Expand Computerized Systems

- . Provide training and software adequate to fully utilize system.
- . Implement automated computer-assisted programs.

8. Interagency Relations

- . Monitor Congressional action concerning dredging and cost sharing.
- . Maintain staff contacts with legislators and Congressional delegation concerning port industry regulation.
- . Develop relations with scientific agencies to insure Port benefits from research are optimized.
  - real time tide telemetry
  - dredging technology
  - de-watering of Cook Inlet dredge spoils
  - monitoring of Upper Cook Inlet shoals
- . Foster development of a statewide port policy entity

Public Utilities	Unit No.	Utility	Unit No.	Division	Unit No.
Port of Anchorage - 1987	8000	Port of Anchorage	8970		

WORKFORCE PROJECTIONS

	<u>1986</u>	<u>1987</u>	<u>1988</u>	<u>1989</u>	<u>1990</u>	<u>1991</u>	<u>1992</u>
<u>DIVISIONS</u>							
Administration/Finance	7	8	8	8	9	9	9
Operations/Maintenance	<u>11</u>	<u>11</u>	<u>11</u>	<u>12</u>	<u>12</u>	<u>12</u>	<u>12</u>
Total	18	19	19	20	21	21	21



## MUNICIPALITY OF ANCHORAGE

PAGE

Public Utilities	Unit No.	Utility	Unit No.	Division	Unit No.	
Port of Anchorage - 1987	8000	Port of Anchorage	8970			
<u>RESOURCE IMPACTS</u>						
	1987	1988	1989	1990	1991	1992
GROWTH FACTORS - TONNAGE	1,537	1,552	1,568	1,584	1,600	1,616
BOND SALES - REV/ INDUSTRIAL DEVELOPMENT	-0-	7,100,000	8,000,000	4,500,000	4,000,000	12,000,000
GRANTS ANTICIPATED	-0-	-0-	-0-	-0-	-0-	-0-
PERSONNEL INCREASES	1	-0-	1	1	-0-	-0-
REVENUE	7,677	7,754	7,831	7,909	8,526	8,611
EXPENSE	6,804	6,912	7,074	7,243	7,369	7,501
NET INCOME REGULATORY	873	842	757	666	1,157	1,110
POSSIBLE RATE INCREASE (YEAR REQUESTED)						20%

MUNICIPALITY OF ANCHORAGE

Public Utilities	Unit No.	Utility	Unit No.	Division
Port of Anchorage - 1987	8000	Port of Anchorage	8970	
MUNICIPALITY OF ANCHORAGE FINANCIAL DATA				
LINE ITEM DESCRIPTION	1985	1986	1987	1987
	ACTUAL	PRO FORMA	PROPOSED	ADOPTED
<b><u>STATEMENT OF SELECTED RATIOS AND STATISTICS</u></b>				
Operating Income	1,585,000	775,000	553,000	
Rate Base (Net Capital Assets)	32,398,000	37,838,000	42,428,000	
Rate of Return	4.89%	2.05%	1.30%	
Operating Income	1,585,000	775,000	553,000	
Operating Revenue	3,997,000	4,370,000	4,507,000	
Operating Margin	39.65%	17.73%	12.27%	
Operating Expenses - Controllable	1,699,000	2,392,000	2,703,000	
Operating Revenue	3,997,000	4,370,000	4,507,000	
Operating Ratio	42.51%	54.74%	59.97%	
Debt/Equity Ratio	48/52	49/51	46/54	

## MUNICIPALITY OF ANCHORAGE

Public Utilities	Unit No	Utility	Unit No	Division
Port of Anchorage - 1987	8000	Port of Anchorage	8970	
MUNICIPALITY OF ANCHORAGE FINANCIAL DATA				
LINE ITEM DESCRIPTION	1985	1986	1987	1987
	ACTUAL	PRO-FORMA	PROPOSED	ADOPTED
<b><u>MISCELLANEOUS STATISTICAL DATA</u></b>				
<b><u>TONNAGE SUMMARY</u></b>				
<b><u>Commodity</u></b>				
General Cargo	1,276,120	1,194,600	1,195,000	
Bulk, Dry	87,927	50,000	75,000	
Bulk, Liquid (Petroleum)	<u>561,151</u>	<u>300,000</u>	<u>300,000</u>	
TOTAL TONNAGE	1,925,198	1,544,600	1,570,000	
ANNUAL % OF INCREASE (DECREASE)	(10%)	(20%)	1.6%	
<b>REVENUE GENERATED BY COMMODITY</b>				
General Cargo	2,398,724	2,703,500	2,704,000	
Dry, Bulk	98,733	52,500	76,000	
Petroleum Bulk	303,410	193,000	193,000	
Other	<u>93,534</u>	<u>73,000</u>	<u>63,000</u>	
TOTAL DOCK REVENUE	2,894,401	3,022,000	3,036,000	
ANNUAL % OF INCREASE (DECREASE)	(7.2%)	4.4%	.5%	

Public Utilities	Unit No.	Utility	Unit No.	Division	Unit No.
Port of Anchorage - 1987	8000	Port of Anchorage	8970		

1987 Budget Impacts

OPERATING

1. Completion of major Municipal capital projects and slowdown of general construction and pipeline activity has impacted tonnage moving across the Port. Revenues are expected to increase approximately 3% in 1987 primarily due to scheduled 5-year rental adjustments of two Industrial Park leases. Petroleum throughput has been negatively impacted by the expansion of refineries in Kenai and North Pole.

NON-OPERATING

Debt service has increased due to the December 1985 sale of port Revenue Bonds (\$27,190,000). This expense will be partially offset by interest earned on the funds prior to project start-ups. User fees are expected to offset interest and principal payments following the completion of scheduled projects.

CAPITAL

Major capital projects included in the Port's 1987 budget are construction of an intermodal freight yard for loading ocean - borne cargo to rail cars and the initial development of a public waterfront area in the Ship Creek Tidelands.

MUNICIPALITY OF ANCHORAGE

Public Utilities Port of Anchorage - 1987	Unit No. 8000	Utility Port of Anchorage	Unit No. 8970	Division
--	------------------	------------------------------	------------------	----------

MUNICIPALITY OF ANCHORAGE  
FINANCIAL DATA

LINE ITEM DESCRIPTION	1985	1986	1987	1987
	ACTUAL	ACTUAL PRO-FORMA	PROPOSED	ADOPTED
<u>Operating Budget</u>				
Revenue	5,882,000	7,243,536 7,426,000	7,676,000	
Expense	3,555,000	5,770,912 6,291,000	7,496,000	
Net Income For Governmental Financial Reporting	2,327,000	1,703,071 1,135,000	180,000	
Adjustment for Regulatory Reporting	477,000	567,000	705,000	
Net Income Regulatory	2,804,000	1,702,000	885,000	
<u>CAPITAL BUDGET</u>				
<u>PROJECT CATEGORY</u>				
Terminal Development	2,245,000	310,000	3,520,000	
Land Development	3,000,000	9,700,000	-0-	
Harbor Development	1,993,000	-0-	3,000,000	
Repair and Rehabilitation	1,250,000	380,000	20,000	
New Equipment	5,265,000	40,000	50,000	
<b>TOTALS</b>	<b>13,753,000</b>	<b>10,430,000</b>	<b>6,590,000</b>	

## MUNICIPALITY OF ANCHORAGE

Public Utilities	Unit No.	Utility	Unit No.	Division
Port of Anchorage - 1987	8000	Port of Anchorage	8970	
MUNICIPALITY OF ANCHORAGE FINANCIAL DATA				
LINE ITEM DESCRIPTION	1985	1986	1987	1987
	ACTUAL	PRO FORMA	PROPOSED	ADOPTED
<b>OPERATING BUDGET</b>				
<b>STATEMENT OF REVENUE AND EXPENSE</b>				
<b>OPERATING REVENUE</b>				
Dock Revenue	2,894,401	2,980,000	2,986,000	
Gantry Crane Revenue	33,980	42,000	50,000	
Industrial Park Revenue	1,068,714	1,348,000	1,471,000	
<b>TOTAL OPERATING REVENUE</b>	<b>3,997,095</b>	<b>4,370,000</b>	<b>4,507,000</b>	
<b>OPERATING EXPENSE</b>				
Personal Services	823,837	1,100,000	1,184,000	
Supplies	174,442	118,000	212,000	
Other Services and Charges	537,495	1,031,000	1,164,000	
Charges From Other Departments	102,724	143,000	143,000	
Depreciation, Non-Contributed Plant	713,009	1,203,000	1,251,000	
Operating Transfers	60,476	-0-	-0-	
<b>*TOTAL OPERATING EXPENSE</b>	<b>2,411,983</b>	<b>3,595,000</b>	<b>3,954,000</b>	
<b>OPERATING INCOME</b>	<b>1,585,112</b>	<b>775,000</b>	<b>553,000</b>	
* Depreciation of Contributed Plant Not Included				

MUNICIPALITY OF ANCHORAGE

Public Utilities	Unit No	Utility	Unit No	Division
Port of Anchorage - 1987	8000	Port of Anchorage	8970	
MUNICIPALITY OF ANCHORAGE FINANCIAL DATA				
LINE ITEM DESCRIPTION	1985 ACTUAL	1986 PRO FORMA	1987 PROPOSED	1987 ADOPTED
<b><u>NON-OPERATING REVENUE</u></b>				
Container Crane Leaseback	62,960	172,000	482,000	
Trestle Leaseback	58,763	56,000	53,000	
Interest Earned	1,610,092	2,678,000	2,484,000	
Right-Of-Way Fees	150,825	150,000	150,000	
Other Non-Operating Revenue	<u>1,973</u>	<u>-0-</u>	<u>-0-</u>	
TOTAL NON-OPERATING REVENUE	1,884,613	3,056,000	3,169,000	
<b><u>NON-OPERATING EXPENSE</u></b>				
Interest on Long Term Debt	<u>666,458</u>	<u>2,129,000</u>	<u>2,837,000</u>	
TOTAL NON-OPERATING EXPENSE	666,458	2,129,000	2,837,000	
NON-OPERATING INCOME	<u>1,218,155</u>	<u>927,000</u>	<u>332,000</u>	
NET INCOME	2,803,267	1,702,000	885,000	
<b><u>RECONCILIATION</u></b>				
NET INCOME REGULATORY	2,803,267	1,702,000	885,000	
LESS: DEPRECIATION OF CONTRIBUTED PLANT	<u>477,300</u>	<u>567,000</u>	<u>705,000</u>	
NET INCOME FOR GOVERNMENT FINANCIAL REPORTING	2,325,967	1,135,000	180,000	

## MUNICIPALITY OF ANCHORAGE

Public Utilities	Unit No.	Utility	Unit No.	Division
Port of Anchorage - 1987	8000	Port of Anchorage	8970	
MUNICIPALITY OF ANCHORAGE FINANCIAL DATA				
LINE ITEM DESCRIPTION	1985	1986	1987	1987
	ACTUAL	PRO-FORMA	PROPOSED	ADOPTED
<u>STATEMENT OF RESOURCES AND USES OF CASH FUNDS</u>				
<u>SOURCES OF CASH FUNDS</u>				
Net Income	2,326,000	1,135,000	180,000	
Depreciation	1,190,000	1,770,000	1,956,000	
Grants	1,882,000	1,848,000	1,395,000	
Bond Proceeds	26,622,000	-0-	-0-	
Contributions/Other	85,000	-0-	-0-	
<b>TOTAL SOURCES OF CASH FUNDS</b>	<b>32,105,000</b>	<b>4,753,000</b>	<b>3,531,000</b>	
<u>USES OF CASH FUNDS</u>				
Additions to Plant	3,893,000	7,210,000	11,662,000	
Bond Principal Payment	985,000	1,246,000	1,841,000	
Other	911,000	200,000	400,000	
<b>Total Uses of Cash Funds</b>	<b>5,789,900</b>	<b>8,656,000</b>	<b>13,903,000</b>	
<b>Net Increase (Decrease) in Cash Funds</b>	<b>26,316,000</b>	<b>(3,903,000)</b>	<b>(10,372,000)</b>	
Cash Balance January 1	15,433,000	41,749,000	37,846,000	
Cash Balance December 1	41,749,000	37,846,000	27,474,000	
<u>DETAILS OF CASH BALANCE</u>				
Equity in General Cash Pool	11,805,000	13,264,000	13,159,000	
Equity in Construction Cash Pool	27,028,000	21,666,000	11,399,000	
Revenue Bond Reserve	2,916,000	2,916,000	2,916,000	
<b>Total Cash Balance December 31</b>	<b>41,749,000</b>	<b>37,846,000</b>	<b>27,474,000</b>	



MUNICIPALITY OF ANCHORAGE

Public Utilities	Unit No	Utility	Unit No	Division
Port of Anchorage - 1987	8000	Port of Anchorage	8970	
MUNICIPALITY OF ANCHORAGE FINANCIAL DATA				
LINE ITEM DESCRIPTION	1985	1986	1987	1987
	ACTUAL	PRO FORMA	PROPOSED	ADOPTED
<b><u>STATEMENT OF CHANGES IN FUND EQUITY</u></b>				
Balance January 1	34,915,000	39,123,000	42,106,000	
Net Income (Loss)	2,326,000	1,135,000	180,000	
Contributions Received	1,882,000	1,848,000	1,395,000	
<b>BALANCE</b>	<b>39,123,000</b>	<b>42,106,000</b>	<b>43,681,000</b>	
Details of Fund Equity				
Retained Earnings	21,464,000	23,166,000	24,051,000	
Contributed Capital	17,659,000	18,940,000	19,630,000	
<b>Total Fund Equity December 31</b>	<b>39,123,000</b>	<b>42,106,000</b>	<b>43,681,000</b>	

## MUNICIPALITY OF ANCHORAGE

Public Utilities	Unit No.	Utility	Unit No.	Division
Port of Anchorage - 1987	8000	Port of Anchorage	8970	
MUNICIPALITY OF ANCHORAGE FINANCIAL DATA				
LINE ITEM DESCRIPTION	1985	1986	1987	1987
	ACTUAL	PRO-FORMA	PROPOSED	ADOPTED
<b><u>NET PROFIT MARGIN</u></b>				
Net Income Governmental Reporting	2,325,967	1,135,000	180,000	
Operating Revenues	3,997,095	4,370,000	4,507,000	
Net Profit Margin Government Reporting	58.2%	26.0%	4.0%	
Net Income (Regulatory)	2,803,267	1,702,000	885,000	
Operating Revenues	3,997,095	4,370,000	4,507,000	
Net Profit Margin (Regulatory)	70.1%	38.9%	19.6%	

Public Utilities	Unit No.	Utility	Unit No.	Division	Unit No.
		PORT OF ANCHORAGE			

1987 CAPITAL IMPROVEMENT BUDGET FINANCIAL SUMMARY

<u>Project Category</u>	<u>Total Project Cost 1987</u>	<u>FUNDING SOURCE</u>		
		<u>Bonds</u>	<u>Operations</u>	<u>Grants</u>
Terminal Development	\$3,520	\$3,500R	\$ 20	
Harbor Development	3,000	3,000R		
Repairs and Rehabilitation	20		20	
New Equipment	<u>50</u>	<u>          </u>	<u>50</u>	
TOTAL	\$6,590	\$6,500R*	\$ 90	

\$ in thousands

\* Issued 12/85

MUNICIPALITY OF ANCHORAGE

BUDGET YEAR PROJECTS

Utility Port of Anchorage - 1987

PROJECT CATEGORY	PROJECT TITLE	LOCATION	FUNDING			
			BONDS G G O BONDS R REV BONDS	OPERATIONS	GRANTS F FEDERAL S STATE	TOTAL
Terminal Development	Construction of Intermodal yard, Parcel 9-B.	Port	3,500R			3,500
	Convert POL Header System from Electric Hydraulics to Straight Hydraulics			20		20
PREPARED BY <u>Tyler Jones</u> DATE <u>6-10-86</u> TOTAL			G 3,500 R	20	F S	3,520

BUDGET YEAR PROJECTS

Port of Anchorage - 1987  
 Utility \_\_\_\_\_

PROJECT CATEGORY	PROJECT TITLE	LOCATION	FUNDING			
			BONDS G G.O BONDS R REV BONDS	OPERATIONS	GRANTS F - FEDERAL S - STATE	TOTAL
Harbor Development	Ship Creek Public Waterfront Development Phase II	Ship Creek	3,000R			3,000
PREPARED BY <u>Tyler Jones</u> DATE <u>6-10-86</u> TOTAL			3,000	G R	F S	3,000

MUNICIPALITY OF ANCHORAGE

BUDGET YEAR PROJECTS

Utility Port of Anchorage - 1987

PROJECT CATEGORY	PROJECT TITLE	LOCATION	FUNDING			
			BOND G O BOND R REV BOND	OPERATIONS	GRANTS F FEDERAL S STATE	TOTAL
Repairs and Rehabilitation	Purchase of Replacement Fender Piling	Port		20		20
PREPARED BY <u>Tyler Jones</u> DATE <u>6-10-86</u> TOTAL			G R	20	F S	20

BUDGET YEAR PROJECTS

Utility Port of Anchorage - 1987

PROJECT CATEGORY	PROJECT TITLE	LOCATION	FUNDING			
			BONDS G G O BONDS R REV BONDS	OPERATIONS	GRANTS F FEDERAL S STATE	TOTAL
Equipment	Computer Equipment and Software	Port		20		20
	Portable Air Compressor and Air Tools	Port		15		15
	Office and Maintenance Shop Equipment	Port		15		15
PREPARED BY <u>Tyler Jones</u> DATE <u>6-10-86</u> TOTAL			G R	50	F S	50

Public Utilities	Unit No	Utility	Unit No	Division	Unit No.
PORT OF ANCHORAGE					

1987-1992 CAPITAL IMPROVEMENT PROJECT FINANCIAL SUMMARY

<u>Project Title</u>	<u>1987</u>	<u>1988</u>	<u>1989</u>	<u>1990</u>	<u>1991</u>	<u>1992</u>	<u>Bonds</u>	<u>Opera- tions</u>	<u>Total</u>
Terminal Development	\$3,520	\$7,100	\$3,000	\$	\$	\$	\$13,600R	\$ 20	\$13,620
Land Development			5,000			5,000	10,000R		10,000
Harbor Development	3,000			4,500	4,000	7,000	18,500R		18,500
Repair/Rehabilitation	20							20	20
New Equipment	50							50	50
<b>TOTAL</b>	<b>\$6,590</b>	<b>\$7,100</b>	<b>\$8,000</b>	<b>\$4,500</b>	<b>\$4,000</b>	<b>\$12,000</b>	<b>\$42,100R</b>	<b>\$ 90</b>	<b>\$42,190</b>
<b>SOURCE OF FUNDING:</b>									
Revenue Bonds	\$6,500	\$7,100	\$8,000	\$4,500	\$4,000	\$12,000	\$42,100	\$	\$42,100
Operations	90							90	90
<b>TOTAL FUNDING</b>	<b>\$6,590</b>	<b>\$7,100</b>	<b>\$8,000</b>	<b>\$4,500</b>	<b>\$4,000</b>	<b>\$12,000</b>	<b>\$42,100</b>	<b>\$ 90</b>	<b>\$42,190</b>



MUNICIPALITY OF ANCHORAGE

FUTURE CAPITAL PROJECTS

Utility Port of Anchorage - 1987

PROJECT CATEGORY	PROJECT TITLE	LOCATION	BUDGET BY YEAR				
			1988	1989	1990	1991	1992
Terminal Development	Expansion of Marine Terminals south of the Petroleum Dock	Port	7,100R				
	Consolidate Cement Header Lines and Construct Cement Header System	Port		3,000R			

Source of Funding

G.O. BONDS

REVENUE BONDS

OPERATIONS

STATE GRANTS

FEDERAL GRANTS

TOTAL

7,100

3,000

7,100

3,000

PREPARED BY

Tyler Jones

DATE

6-10-86

FUTURE CAPITAL PROJECTS

Port of Anchorage - 1987

Utility \_\_\_\_\_

PROJECT CATEGORY	PROJECT TITLE	LOCATION	BUDGET BY YEAR				
			1988	1989	1990	1991	1992
Land Development	Expanded Land Development of State and U. S. government Property Phase II			5,000R			
	Expanded Land Development of State and U.S. Government Property - Phase III						5,000R

Source of Funding

G.O. BONDS	_____	_____	_____	_____	_____
REVENUE BONDS	_____	5,000	_____	_____	5,000
OPERATIONS	_____	_____	_____	_____	_____
STATE GRANTS	_____	_____	_____	_____	_____
FEDERAL GRANTS	_____	_____	_____	_____	_____
TOTAL	_____	5,000	_____	_____	5,000

PREPARED BY Tyler Jones

DATE 6-10-86

MUNICIPALITY OF ANCHORAGE

FUTURE CAPITAL PROJECTS

Port of Anchorage - 1987  
 Utility \_\_\_\_\_

PROJECT CATEGORY	PROJECT TITLE	LOCATION	BUDGET BY YEAR				
			1988	1989	1990	1991	1992
Harbor Development	Ship Creek Public Waterfront Development Phase III	Ship Creek			4,500R		
	Construct Barge Facility at Appropriate Waterfront Location					4,000R	
	Ship Creek Public Waterfront Facility Phase IV						7,000R
Source of Funding							
		G.O. BONDS					
		REVENUE BONDS			4,500	4,000	7,000
		OPERATIONS					
		STATE GRANTS					
		FEDERAL GRANTS					
		TOTAL			4,500	4,000	7,000

PREPARED BY Tyler Jones

DATE 6-10-86