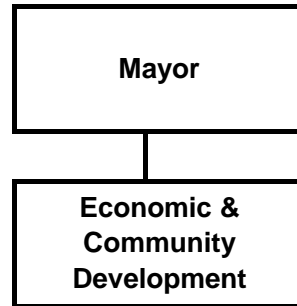


Economic & Community Development



Economic & Community Development

Description

Within the Economic & Community Development Department and reporting to the director of Economic & Community Development or his designee are the following departments:

- Planning
- Development Services
- Parks & Recreation
- Real Estate
- Library

Additionally reporting to the director is the Culture, Entertainment, and Arts Venues division, which provides oversight and management of municipal-owned facilities accessible to the public for arts, education, entertainment, learning, and gathering, including: the Egan Civic & Convention Center, the Dena'ina Civic & Convention Center, the Anchorage Museum at Rasmuson Center, the Anchorage Golf Course, the George M. Sullivan Sports Arena, the Alaska Center for the Performing Arts, the Ben Boeke & Dempsey Anderson Ice Arenas.

Department Services

The Economic & Community Development Department is responsible for the coordination and management of Municipal departments and divisions working to improve the community's economic vitality; facilitate commercial and residential property development; enforce building and land use codes; and manage regional planning projects. Additionally, the Director oversees community programs and assets that contribute to the quality of life for those who live, work, and play in Anchorage.

Divisions:

- Administration
 - Provides leadership, coordination, and management for Economic & Community Development and the reporting departments.
- Culture, Entertainment, and Arts Venues:
 - Management of the municipal facilities that fall under Economic & Community Development.

Economic & Community Development Department Summary

	2014 Actuals	2015 Revised	2016 Proposed	16 v 15 % Chg
Direct Cost by Division				
ECD Administration	-	-	454,752	100.00%
ECD Culture, Entertainment, & Arts Venues	9,995,083	9,979,551	10,225,292	2.46%
Direct Cost Total	9,995,083	9,979,551	10,680,044	7.02%
Intragovernmental Charges				
Charges by/to Other Departments	475,561	528,784	72,514	(86.29%)
Function Cost Total	10,470,644	10,508,335	10,752,558	2.32%
Program Generated Revenue	(779,325)	(578,207)	(590,298)	2.09%
Net Cost Total	9,691,319	9,930,128	10,162,260	2.34%
Direct Cost by Category				
Salaries and Benefits	-	-	409,510	100.00%
Supplies	-	-	45,242	100.00%
Travel	-	-	-	-
Contractual/Other Services	8,978,459	9,112,737	9,346,084	2.56%
Debt Service	1,016,624	866,814	879,208	1.43%
Direct Cost Total	9,995,083	9,979,551	10,680,044	7.02%
Position Summary as Budgeted				
Full-Time	-	-	3	100.00%
Part-Time	-	-	-	-
Position Total	-	-	3	100.00%

Economic & Community Development Reconciliation from 2015 Revised Budget to 2016 Proposed Budget

	Direct Costs	Positions		
		FT	PT	Seas/T
2016 Continuation Level	-	-	-	-
Transfers (to)/from Other Agencies				
- 2016 Reorganization - Director	169,189	1	-	-
- 2016 Reorganization - from Community Development Department, per AO 2015-112 - Supplies	45,242	-	-	-
- 2016 Reorganization - from Municipal Manger Department; FT Special Administrative Assistant II, FT Principal Administrative Officer	10,465,613	2	-	-
2016 Proposed Budget	10,680,044	3	-	-

Economic & Community Development Division Summary ECD Administration

(Fund Center # 510500 - Office of Economic & Community Development Administration)

	2014 Actuals	2015 Revised	2016 Proposed	16 v 15 % Chg
Direct Cost by Category				
Salaries and Benefits	-	-	409,510	100.00%
Supplies	-	-	45,242	100.00%
Travel	-	-	-	-
Manageable Direct Cost Total	-	-	454,752	100.00%
Debt Service	-	-	-	-
Non-Manageable Direct Cost Total	-	-	-	-
Direct Cost Total	-	-	454,752	1
Intragovernmental Charges				
Charges by/to Other Departments	-	-	(454,751)	100.00%
Function Cost Total	-	-	1	100.00%
Net Cost Total	-	-	1	100.00%
Position Summary as Budgeted				
Full-Time	-	-	3	100.00%
Position Total	-	-	3	100.00%

**Economic & Community Development
Division Detail
ECD Administration**

(Fund Center # 510500 - Office of Economic & Community Development Administration)

	2014 Actuals	2015 Revised	2016 Proposed	16 v 15 % Chg
Direct Cost by Category				
Salaries and Benefits	-	-	409,510	100.00%
Supplies	-	-	45,242	100.00%
Travel	-	-	-	-
Manageable Direct Cost Total	-	-	454,752	100.00%
Debt Service	-	-	-	-
Non-Manageable Direct Cost Total	-	-	-	-
Direct Cost Total	-	-	454,752	100.00%
Intragovernmental Charges				
Charges by/to Other Departments	-	-	(454,751)	100.00%
Net Cost				
Direct Cost Total	-	-	454,752	100.00%
Charges by/to Other Departments Total	-	-	(454,751)	100.00%
Net Cost Total	-	-	1	100.00%

Position Detail as Budgeted

	2014 Revised		2015 Revised		2016 Proposed	
	Full Time	Part Time	Full Time	Part Time	Full Time	Part Time
Executive Director ECD	-	-	-	-	1	-
Principal Admin Officer	-	-	-	-	1	-
Special Admin Assistant II	-	-	-	-	1	-
Position Detail as Budgeted Total	-	-	-	-	3	-

Economic & Community Development Division Summary

ECD Culture, Entertainment, & Arts Venues

(Fund Center # 121032, 121035, 121031, 121034, 121079, 121030, 121036, 121037, 121033)

	2014 Actuals	2015 Revised	2016 Proposed	16 v 15 % Chg
Direct Cost by Category				
Travel	-	-	-	-
Contractual/Other Services	8,978,459	9,112,737	9,346,084	2.56%
Manageable Direct Cost Total	8,978,459	9,112,737	9,346,084	2.56%
Debt Service	1,016,624	866,814	879,208	1.43%
Non-Manageable Direct Cost Total	1,016,624	866,814	879,208	1.43%
Direct Cost Total	9,995,083	9,979,551	10,225,292	-
Intragovernmental Charges				
Charges by/to Other Departments	475,561	528,784	527,265	(0.29%)
Function Cost Total	10,470,644	10,508,335	10,752,557	2.32%
Program Generated Revenue by Fund				
Fund 101000 - Areawide General	302,810	296,292	296,598	0.10%
Fund 301000 - ACPA Surcharge Revenue Bond	476,516	281,915	293,700	4.18%
Program Generated Revenue Total	779,325	578,207	590,298	2.09%
Net Cost Total	9,691,319	9,930,128	10,162,259	2.34%
Position Summary as Budgeted				
Position Total				-

Economic & Community Development Division Detail

ECD Culture, Entertainment, & Arts Venues

(Fund Center # 121032, 121035, 121031, 121034, 121079, 121030, 121036, 121037, 121033)

	2014 Actuals	2015 Revised	2016 Proposed	16 v 15 % Chg
Direct Cost by Category				
Travel	-	-	-	-
Contractual/Other Services	8,978,459	9,112,737	9,346,084	2.56%
Manageable Direct Cost Total	8,978,459	9,112,737	9,346,084	2.56%
Debt Service	1,016,624	866,814	879,208	1.43%
Non-Manageable Direct Cost Total	1,016,624	866,814	879,208	1.43%
Direct Cost Total	9,995,083	9,979,551	10,225,292	2.46%
Intragovernmental Charges				
Charges by/to Other Departments	475,561	528,784	527,265	(0.29%)
Program Generated Revenue				
405120 - Build America Bonds (BABs) Subsidy	70,957	70,945	71,251	0.43%
406290 - Rec Center Rentals & Activities	91,620	70,000	70,000	-
406620 - Reimbursed Cost-ER	-	15,170	15,170	-
406625 - Reimbursed Cost-NonGrant Funded	599	-	-	-
408380 - Prior Year Expense Recovery	56	-	-	-
408430 - Amusement Surcharge	140,177	140,177	140,177	-
408440 - ACPA Loan Surcharge	468,109	281,915	293,700	4.18%
440010 - GCP CshPool ST-Int(MOA/ML&P)	7,628	-	-	-
440080 - UnRIzd Gns&Lss Invs(MOA/AWWU)	180	-	-	-
Program Generated Revenue Total	779,325	578,207	590,298	2.09%
Net Cost				
Direct Cost Total	9,995,083	9,979,551	10,225,292	2.46%
Charges by/to Other Departments Total	475,561	528,784	527,265	(0.29%)
Program Generated Revenue Total	(779,325)	(578,207)	(590,298)	2.09%
Net Cost Total	9,691,319	9,930,128	10,162,259	2.34%

Anchorage: Performance. Value. Results

Economic & Community Development Department

Anchorage: Performance. Value. Results.

Purpose

Community Development works to facilitate development and a multi-modal transportation system in accordance with municipal codes, protecting safety, public health and environmental resources, while also working to promote a healthy economy, strong businesses and neighborhoods, and recreational opportunities. We respond to our customers seeking code enforcement information, zoning or platting applications, building permits or inspections with open, friendly, cost efficient and effective service.

Core Services

- Enable property development through building permitting and creative and practical zoning regulations and plans that meet community expectations for our winter city community;
- Ensure new construction meets municipal standards for protecting safety, public health, and environmental quality;
- Enforce municipal codes to protect public assets such as rights-of-way and to promote clean and attractive neighborhoods;
- Support continued development of the community by planning for the community's long-term multi-modal transportation needs; and
- Work to achieve land use goals established through Assembly-adopted comprehensive plans for Eklutna/Eagle River/Chugiak, Anchorage Bowl, Girdwood and Turnagain Arm areas.