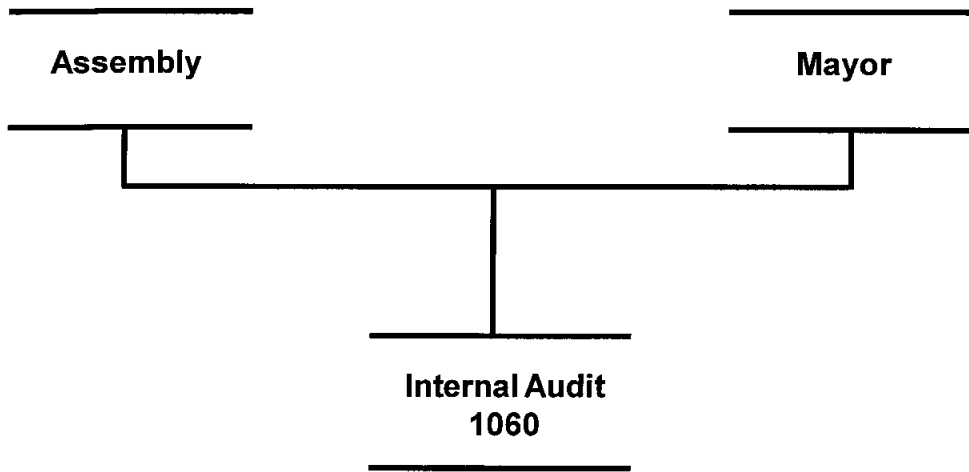


# **INTERNAL AUDIT**

# INTERNAL AUDIT



## 2004 Resource Plan

**Department: Internal Audit**

Division	<b>Financial Summary</b>		<b>Personnel Summary</b>			
	2003	2004	2003 Revised		2004 Proposed	
	Revised	Proposed	FT	PT	Temp	Total
Internal Audit	343,810	378,940	4	1		5
<b>Operating Cost</b>	<b>343,810</b>	<b>378,940</b>	<b>4</b>	<b>1</b>	<b>0</b>	<b>5</b>
Add Debt Service	0	0				
<b>Direct Organization Cost</b>	<b>343,810</b>	<b>378,940</b>				
Charges From/(To) Others	(217,870)	(230,540)				
<b>Function Cost</b>	<b>125,940</b>	<b>148,400</b>				
Less Program Revenues	0	0				
<b>Net Program Cost</b>	<b>125,940</b>	<b>148,400</b>				

### 2004 Resource Costs by Category

Division	Personal Services	Supplies	Other Services *	Capital Outlay	Total Direct Cost
Internal Audit	371,960	1,900	5,080		378,940
<b>Operating Cost</b>	<b>371,960</b>	<b>1,900</b>	<b>5,080</b>	<b>0</b>	<b>378,940</b>
Less Vacancy Factor					0
Add Debt Service					0
<b>Total Direct Organization Cost</b>	<b>371,960</b>	<b>1,900</b>	<b>5,080</b>	<b>0</b>	<b>378,940</b>

\* Travel budgeted by this department within the Other Services category is \$2,200

<b>RECONCILIATION FROM 2003 REVISED BUDGET TO 2004 PROPOSED BUDGET</b>
--

**DEPARTMENT: INTERNAL AUDIT**

	<u>DIRECT COSTS</u>	<u>POSITIONS</u>		
		<u>FT</u>	<u>PT</u>	<u>T/Seas</u>
<b>2003 REVISED BUDGET:</b>	\$ 343,810	4	1	0
<b>2003 ONE-TIME REQUIREMENTS:</b>				
- None	-			
<b>TRANSFERS (TO)/FROM OTHER AGENCIES:</b>				
- None	0			
<b>DEBT SERVICE CHANGES:</b>	0			
<b>CHANGES IN EXISTING PROGRAMS FOR 2004:</b>				
- Salaries and benefits adjustments	35,710			
<b>CONTINUATION LEVEL FOR 2004:</b>	\$ 379,520	4	1	0
<b>TRANSFERS (TO)/FROM OTHER AGENCIES:</b>				
- None	\$ 0			
<b>2004 PROGRAMMATIC CHANGES:</b>				
- Rollback Municipal employees wage rates to 2003 level	\$ (580)			
<b>2004 PROPOSED BUDGET:</b>	\$ 378,940	4	1	0

BPAB010R  
 09/30/03  
 195826

M U N I C I P A L I T Y O F A N C H O R A G E  
 2004 DEPARTMENT RANKING

DEPT: 03 -INTERNAL AUDIT  
 DEPT BUDGET UNIT/  
 RANK PROGRAM

SL SVC  
 CODE LVL

1 1060-INTERNAL AUDIT  
 0027-Internal Audit  
 SOURCE OF FUNDS, THIS SVC LEVEL:  
 TAX SUPPORT  
 IGC SUPPORT

1 Determine if government operations are  
 OF adequately controlled & if the required  
 1 high degree of public accountability is  
 maintained. Mayor/Assembly approved  
 Audit Plan includes performance & com-  
 pliance audits & evaluations of internal  
 controls. Provide management assistance  
 & recommend ways to improve Municipal  
 processes. Assist External Auditor-  
 resulting in tax savings of \$34,000.

PERSONNEL			PERSONAL	SUPPLIES	OTHER	DEBT	CAPITAL	TOTAL
FT	PT	T	SERVICE		SERVICES	SERVICE	OUTLAY	
4	1	0	371,960	1,900	5,080	0	0	378,940

-----  
 SUBTOTAL OF FUNDED SERVICE LEVELS, INTERNAL AUDIT . . . . .

PERSONNEL			PERSONAL	SUPPLIES	OTHER	DEBT	CAPITAL	TOTAL
FT	PT	T	SERVICE		SERVICES	SERVICE	OUTLAY	
4	1	0	371,960	1,900	5,080	0	0	378,940

----- DEPARTMENT OF INTERNAL AUDIT FUNDING LINE -----  
 . . . . . 378,940

TOTALS FOR DEPARTMENT OF INTERNAL AUDIT , FUNDED AND UNFUNDED . . . . .

PERSONNEL			PERSONAL	SUPPLIES	OTHER	DEBT	CAPITAL	TOTAL
FT	PT	T	SERVICE		SERVICES	SERVICE	OUTLAY	
4	1	0	371,960	1,900	5,080	0	0	378,940