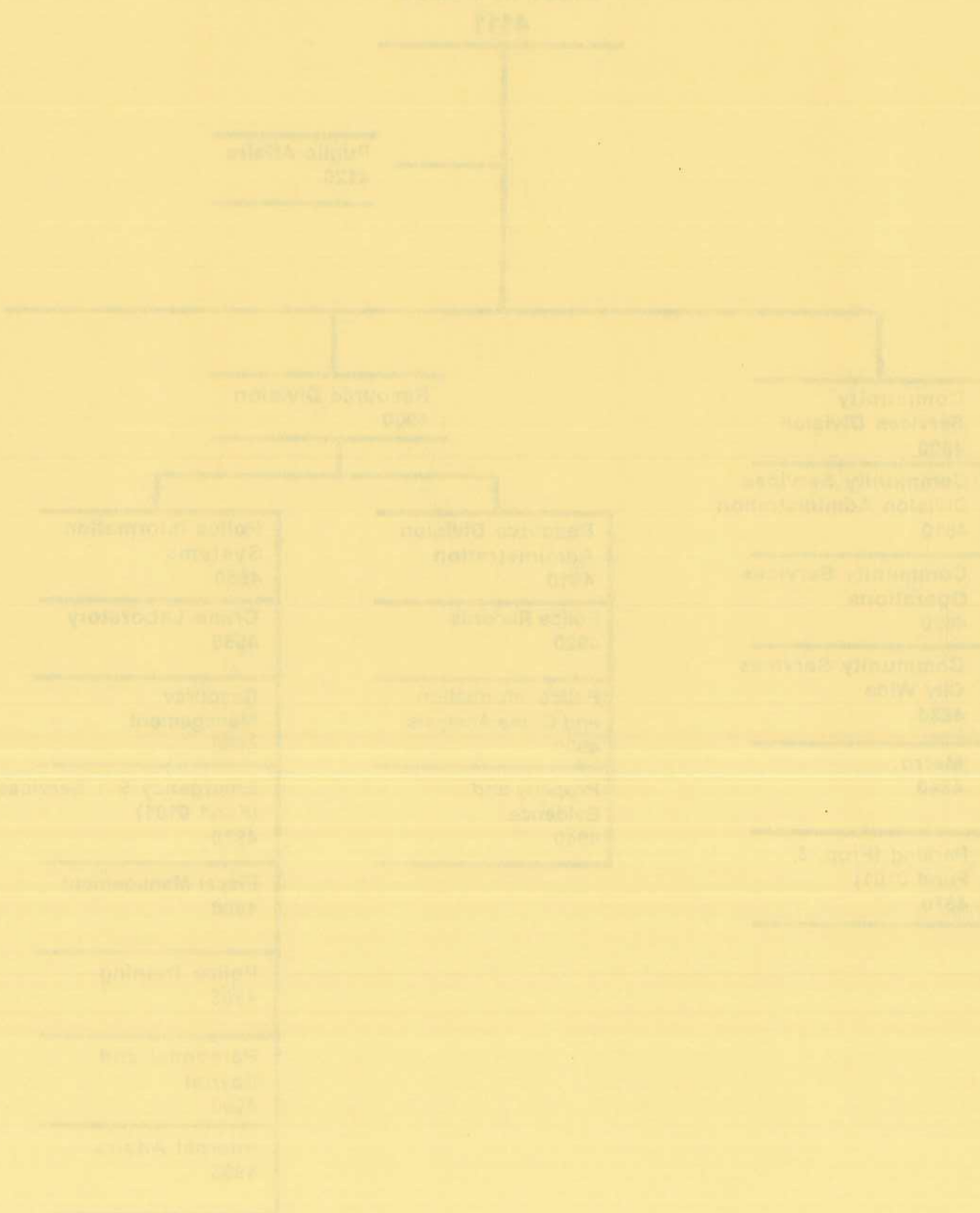
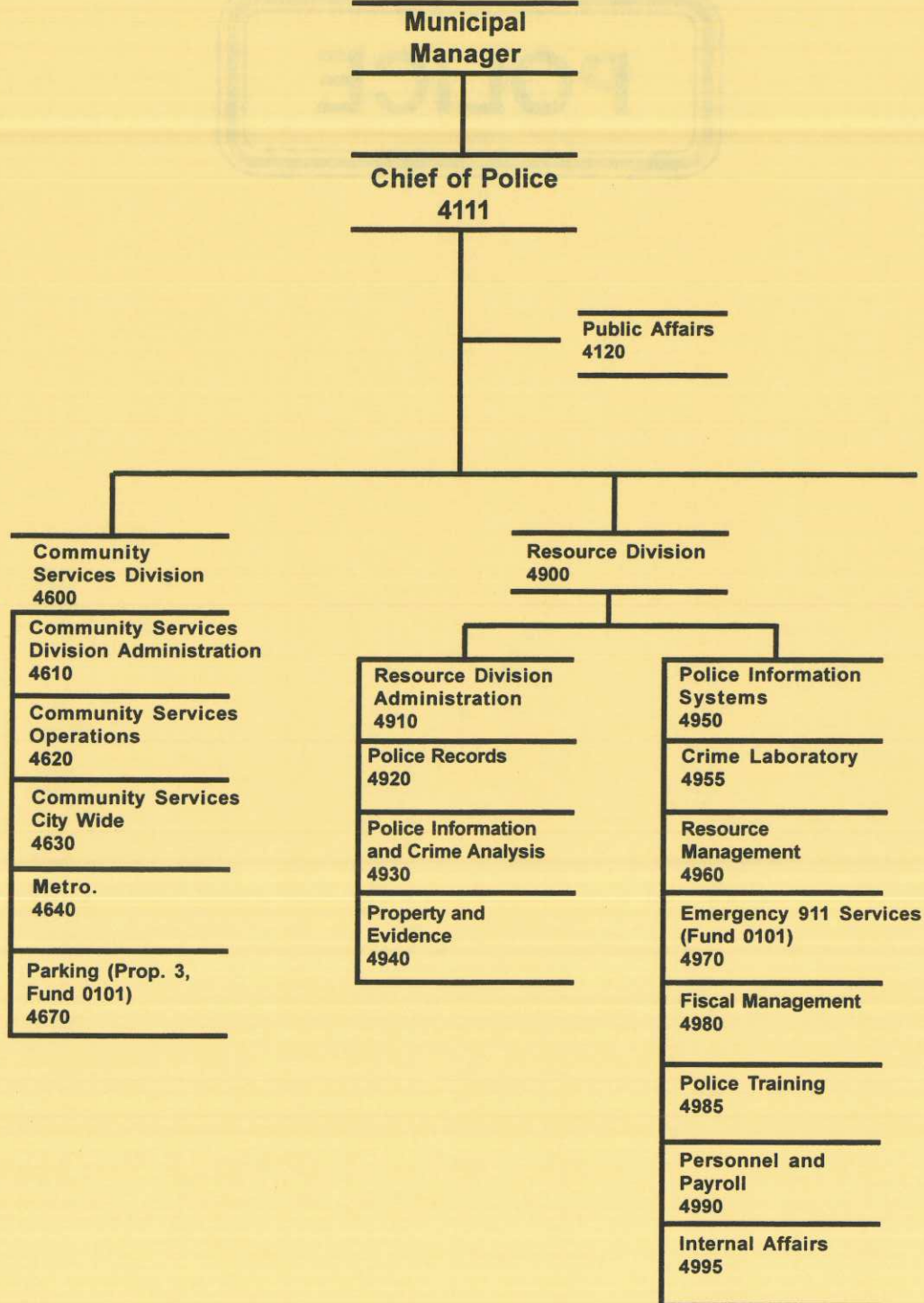


POLICE

# POLICE



# POLICE



**DEPARTMENT SUMMARY**

**Department**

**ANCHORAGE METROPOLITAN POLICE**

**Mission**

To deliver police services in the most effective, responsive, and professional manner possible; to protect lives and property; to prevent crime and maintain order; and to enforce the law impartially with due regard for the constitutional rights of all citizens.

**Major Department Highlights**

- Maintain the downward trend in serious crime by combining traditional enforcement with proactive methods and innovative problem solving through community based policing.
- Increase the authorized strength for sworn officers to 370.
- Employ new technologies to extract additional potential from existing resources.
- Direct the focus of resources toward quality of life issues.
- Improve efforts to base priorities and strategies on district-specific issues.
- Maintain bike patrols, agency partnerships, and crime prevention activities.
- Continue working with Federal and State agencies in order to target major drug suppliers and users.
- Utilize technology to further the development of crime analysis to support officers in their efforts to eliminate the causes of crime in each neighborhood, and to help more effectively manage resources.

**RESOURCES**

	2000	2001
Direct Costs	\$ 46,230,130	\$ 45,488,100
Program Revenues	\$ 6,706,700	\$ 6,706,700
Personnel	529 FT	518 FT
Grant Budget	\$ 1,175,034	\$ 1,293,596
Grant Personnel	15 FT	15 FT

2001 RESOURCE PLAN

DEPARTMENT: ANCH METROPOLITAN POLICE

DIVISION	FINANCIAL SUMMARY		PERSONNEL SUMMARY							
	2000 REVISED	2001 BUDGET	2000 REVISED				2001 BUDGET			
			FT	PT	T	TOTAL	FT	PT	T	TOTAL
CHIEF OF POLICE	989,780	912,100	11			11	10			10
COMMUNITY SERVICES DIV	28,204,960	28,495,010	359			359	343			343
RESOURCE DIVISION	16,118,360	15,563,500	174			174	165			165
COMMUNITY SVCS DIV-101	281,180	281,180								
OPERATING COST	45,594,280	45,251,790	544			544	518			518
ADD DEBT SERVICE	635,850	236,310								
DIRECT ORGANIZATION COST	46,230,130	45,488,100								
ADD INTRAGOVERNMENTAL CHARGES FROM OTHERS	13,991,620	12,631,980								
TOTAL DEPARTMENT COST	60,221,750	58,120,080								
LESS INTRAGOVERNMENTAL CHARGES TO OTHERS	2,667,190	2,719,730								
FUNCTION COST	57,554,560	55,400,350								
LESS PROGRAM REVENUES	6,706,700	6,706,700								
NET PROGRAM COST	50,847,860	48,693,650								

2001 RESOURCES BY CATEGORY OF EXPENSE

DIVISION	PERSONAL SERVICES	SUPPLIES	OTHER SERVICES	CAPITAL OUTLAY	TOTAL DIRECT COST
CHIEF OF POLICE	786,260	35,400	85,640	4,800	912,100
COMMUNITY SERVICES DIV	28,699,560	126,250	549,550	51,370	29,426,730
RESOURCE DIVISION	10,412,380	503,700	4,606,010	124,820	15,646,910
COMMUNITY SVCS DIV-101			281,180		281,180
DEPT. TOTAL WITHOUT DEBT SERVICE	39,898,200	665,350	5,522,380	180,990	46,266,920
LESS VACANCY FACTOR	1,015,130				1,015,130
ADD DEBT SERVICE					236,310
TOTAL DIRECT ORGANIZATION COST	38,883,070	665,350	5,522,380	180,990	45,488,100

**RECONCILIATION FROM 2000 REVISED BUDGET TO 2001 PROPOSED BUDGET**

**DEPARTMENT: ANCHORAGE METROPOLITAN POLICE**

	<b>DIRECT COSTS</b>	<b>POSITIONS</b>		
		FT	PT	T
<b>2000 REVISED BUDGET:</b>	\$ 46,230,130	544	*	
<b>2000 ONE-TIME REQUIREMENTS:</b>				
- Legal services in 2000 for various Police Dept cases	(209,750)			
- Tax Anticipation Notes approved in 2000	(22,480)			
<b>AMOUNT REQUIRED TO CONTINUE EXISTING PROGRAMS IN 2001:</b>				
- Salaries and benefits adjustment	615,050			
<b>TRANSFERS (TO)/FROM OTHER AGENCIES:</b>				
- To MIS for partial funding of new Public Safety GIS position	(35,000)			
- To MIS for new/increased communications service	(13,950)			
<b>MISCELLANEOUS INCREASES (DECREASES):</b>				
- Debt service adjustment	(399,540)			
- Increase estimated support costs for 15 new officers hired under COPS grant	970,790			
<b>2001 CONTINUATION LEVEL:</b>	\$ 47,135,250	544	*	0
<b>PROGRAMMATIC BUDGET CHANGES:</b>				
- Patrol Administration - will require remaining patrol administrators to perform additional duties.	\$ (102,050)	(1)		
- Administrative Support - will shift administrative and support functions to remaining support staff. May cause some delays in administrative processing.	(574,310)	(10)		
- Delay the 2001 police academy until December	(970,790)			
<b>2001 PROPOSED BUDGET:</b>	\$ 45,488,100	533	*	0

\* Includes 15 new sworn officers anticipated to be hired under a 1999 COPS grant from U. S. Department of Justice. Originally budgeted to be hired in December 2000, hiring and resulting Municipal match and support costs have been delayed until December 2001.

## 2001 P R O G R A M P L A N

DEPARTMENT: ANCH METROPOLITAN POLICE DIVISION: CHIEF OF POLICE  
PROGRAM: Police Administration

### PURPOSE:

To deliver police services in the most effective, responsive, professional manner possible; to protect lives and property; to prevent crime and maintain order; and to enforce the law impartially with due regard for all citizens' constitutional rights.

### 2000 PERFORMANCES:

- Supported the downward trend in measurable serious crime through continued traditional enforcement efforts.
- Supplemented traditional reactive measures with proactive, innovative problem-solving operations aimed at reducing fear of crime and actual crime.
- Employed technology and innovation to extract additional potential from existing authorized strength, and to then directed newly derived resources toward quality-of-life crimes and issues.
- Assigned an integrated patrol and detective structure to geographic sub-sections of Anchorage, and then based police priorities and strategies largely on district specific issues.
- Continued bike patrols, agency partnerships, and crime prevention focus.

### 2001 PERFORMANCE OBJECTIVES:

- Support the downward trend in measurable serious crime through continued traditional enforcement efforts.
- Supplement traditional reactive measures with proactive and innovative problem solving operations aimed at reducing fear of crime (in addition to actual crime).
- Employ technology and innovation to extract additional potential from existing authorized strength, and to then direct newly derived resources toward quality-of-life crimes and issues.
- Assign an integrated patrol and detective structure to geographic sub-sections of Anchorage, and then base police priorities and strategies largely on district specific issues.
- Continue CAP Crime, bike patrols, agency partnerships, and crime prevention activities as in 2000.

2001 P R O G R A M P L A N

DEPARTMENT: ANCH METROPOLITAN POLICE DIVISION: CHIEF OF POLICE

PROGRAM: Police Administration

RESOURCES:

	1999 REVISED			2000 REVISED			2001 BUDGET		
	FT	PT	T	FT	PT	T	FT	PT	T
PERSONNEL:	6	0	0	6	0	0	6	0	0
PERSONAL SERVICES	\$	423,560		\$	514,220		\$	517,660	
SUPPLIES		23,420			23,430			23,430	
OTHER SERVICES		7,700			7,720			7,720	
CAPITAL OUTLAY		1,400			1,400			1,400	
TOTAL DIRECT COST:	\$	456,080		\$	546,770		\$	550,210	

WORK MEASURES:

- Increase proactive police time (in %)		20		20		20
- Department-wide filled staffing level (in %)		99		99		99
- Department-wide long-term sick/injured/light duty rate (in %)		3		3		3

90 SERVICE LEVELS ARE FUNDED FOR THE DEPARTMENT. THIS PROGRAM HAS LEVELS:  
1, 64

2001 P R O G R A M P L A N

DEPARTMENT: ANCH METROPOLITAN POLICE DIVISION: CHIEF OF POLICE  
 PROGRAM: Crime Prevention

PURPOSE:

To prevent crime through public awareness and education, to provide the news media with specific facts pertaining to crimes and police operations and with general information on the workings of the department, and to actively promote the image of the police department through proactive means.

2000 PERFORMANCES:

- Supported the implementation of Community Oriented Policing by preparing informative public presentations for delivery by the Chief of Police.
- Improved the public image of the department utilizing principles of marketing.
- Enhanced the success of Chief of Police and his policies by fostering better and more frequent communication with the media.

2001 PERFORMANCE OBJECTIVES:

- Support the implementation of Community Oriented Policing by preparing informative public presentations for delivery by the Chief of Police.
- Improve the public image of the department utilizing principles of marketing.
- Enhance the success of the Chief of Police and his policies by fostering better and more frequent communication with the media.

RESOURCES:

	1999 REVISED			2000 REVISED			2001 BUDGET		
	FT	PT	T	FT	PT	T	FT	PT	T
PERSONNEL:	5	0	0	5	0	0	4	0	0
PERSONAL SERVICES	\$	339,610		\$	349,720		\$	268,600	
SUPPLIES		11,950			11,970			11,970	
OTHER SERVICES		77,900			77,920			77,920	
CAPITAL OUTLAY		3,400			3,400			3,400	
TOTAL DIRECT COST:	\$	432,860		\$	443,010		\$	361,890	

WORK MEASURES:

- Create new releases on a monthly basis 144 144 144
- Respond to demands from local media 50 50 50
- Quarterly meetings with Community Policing groups 12 12 12
- Public presentations on public safety issues 110 110 110
- Effective hotline tips received by the Crime Stopper's phone line 25 25 25

90 SERVICE LEVELS ARE FUNDED FOR THE DEPARTMENT. THIS PROGRAM HAS LEVELS: 74, 75, 82



This page intentionally left blank.

## 2001 P R O G R A M P L A N

DEPARTMENT: ANCH METROPOLITAN POLICE DIVISION: COMMUNITY SERVICES DIV  
PROGRAM: Metro

### PURPOSE:

To plan and organize the investigation of crimes against persons and property and the trafficking of illicit drugs in order to apprehend and successfully prosecute criminal offenders. To provide investigative support to other enforcement sections of the department.

### 2000 PERFORMANCES:

- Initiated 95% of all illegal drug sale investigations.
- Initiated 95% of all vice related investigations.
- Seized \$1.3 million worth of illegal drugs (street value).
- Coordinated drug investigations within APD and with Federal and State agencies.
- Provided assistance on at least 400 problems worked by other sections.
- Actively pursued State and/or Federal grants to provide funding for special projects.
- Provided investigation for asset seizure cases.
- Coordinated with district commanders to identify and resolve illicit drug related problems on a district level.

### 2001 PERFORMANCE OBJECTIVES:

- Initiate 95% of all illegal drug sale investigations.
- Initiate 95% of all vice related investigations.
- Seize \$1.3 million worth of illegal drugs (street value).
- Coordinate drug investigations within APD and with Federal and State agencies.
- Provide assistance on at least 400 problems worked by other sections.
- Actively pursue State and/or Federal grants to provide additional funds for special projects.
- Provide investigation for asset seizure cases.
- Coordinate with district commanders to identify and resolve illicit drug related problems on a district level.

2001 P R O G R A M P L A N

DEPARTMENT: ANCH METROPOLITAN POLICE DIVISION: COMMUNITY SERVICES DIV  
 PROGRAM: Metro  
 RESOURCES:

	1999 REVISED			2000 REVISED			2001 BUDGET		
	FT	PT	T	FT	PT	T	FT	PT	T
PERSONNEL:	10	0	0	10	0	0	10	0	0
PERSONAL SERVICES	\$ 1,798,790			\$ 946,150			\$ 963,460		
SUPPLIES	8,000			8,020			8,020		
OTHER SERVICES	159,090			158,070			158,070		
TOTAL DIRECT COST:	\$ 1,965,880			\$ 1,112,240			\$ 1,129,550		
PROGRAM REVENUES:	\$ 125,500			\$ 125,500			\$ 125,500		

WORK MEASURES:

- Narcotics cases assigned	280	280	280
- Total drug charges	840	840	840
- Value of drug assets seized	20,010	20,010	20,010
- Value of drugs seized	1,300,000	1,300,000	1,300,000
- Total number of people arrested for drug-related offenses	420	420	420
- Total number of assists for other investigative sections	400	400	400

90 SERVICE LEVELS ARE FUNDED FOR THE DEPARTMENT. THIS PROGRAM HAS LEVELS:  
 20, 21, 22, 23

## 2001 P R O G R A M P L A N

DEPARTMENT: ANCH METROPOLITAN POLICE DIVISION: COMMUNITY SERVICES DIV  
PROGRAM: Citywide Services

### PURPOSE:

To plan and organize the investigation of crimes against persons and property in order to apprehend and successfully prosecute criminal offenders, to transport prisoners, to serve court paperwork and coordinate domestic violence cases.

### 2000 PERFORMANCES:

- Screened all homicide cases and actively investigated 100%.
- Screened 100% of all other deaths for possible criminal culpability.
- Screened all adult and child sexual assault cases and actively investigated 70%.
- Screened 100% of cases involving pawned items and actively investigated 35% of these cases in tandem with property crime investigators.
- Screened 100% of crimes against children cases and assigned to area commanders as appropriate.
- Screened & coordinated investigations of 90% of domestic violence cases.
- Screened and actively investigated 100% of all fatal accidents.

### 2001 PERFORMANCE OBJECTIVES:

- Screen all homicide cases and actively investigate fully.
- Screen fully all other deaths for possible criminal culpability.
- Screen all adult and child sexual assault cases and actively investigate.
- Screen 100% of cases involving pawned items and actively investigate 35% of these cases in tandem with property crime investigators.
- Screen 100% of crimes against children cases and assign to area commanders as appropriate.
- Screen and coordinate investigations of 90% of domestic violence cases.
- Screen and actively investigate 100% of all fatal accidents.

2001 P R O G R A M P L A N

DEPARTMENT: ANCH METROPOLITAN POLICE DIVISION: COMMUNITY SERVICES DIV  
 PROGRAM: Citywide Services  
 RESOURCES:

	1999 REVISED			2000 REVISED			2001 BUDGET		
	FT	PT	T	FT	PT	T	FT	PT	T
PERSONNEL:	64	0	0	64	0	0	61	0	0
PERSONAL SERVICES	\$ 2,658,090			\$ 5,606,360			\$ 5,391,650		
SUPPLIES	12,600			12,620			12,620		
OTHER SERVICES	80,580			77,570			77,570		
CAPITAL OUTLAY	23,370			23,370			23,370		
TOTAL DIRECT COST:	\$ 2,774,640			\$ 5,719,920			\$ 5,505,210		
PROGRAM REVENUES:	\$ 5,000			\$ 5,000			\$ 5,000		

WORK MEASURES:

- Homicide cases assigned		27		27		27
- Sexual assault cases assigned (adult and child)		770		770		770
- Fatality accidents investigated		20		20		20
- Prisoner Transports		9,048		9,048		9,048
- Domestic violence protective orders served		527		527		527
- Other court summons and paperwork served		2,191		2,191		2,191
- Arrest warrants served		812		812		812
- Collect, review, verify and correct pawn shop transaction reports		182,108		182,108		182,108
- Identify individual items of stolen property in the pawn system.		1,061		1,061		1,061
- Review and coordinate investigation of domestic violence reports		836		836		836

90 SERVICE LEVELS ARE FUNDED FOR THE DEPARTMENT. THIS PROGRAM HAS LEVELS:  
 8, 10, 11, 12, 13

## 2001 PROGRAM PLAN

DEPARTMENT: ANCH METROPOLITAN POLICE DIVISION: COMMUNITY SERVICES DIV  
PROGRAM: Community Services

### PURPOSE:

To plan and implement strategies for the effective deployment of sworn officers to deliver both the traditional police services (keep the peace, protect people and property, ensure the orderly flow of traffic, and enforce the law) and the community-based, problem-oriented policing services.

### 2000 PERFORMANCES:

- Completed transition to full department reorganization.
- Began institutionalizing community-based and problem-oriented policing within the Community Services Division.
- Managed the Motorcycle Enforcement Program effectively.
- Efficiently responded to citizens' calls for service.
- Enforced various laws through preventative measures and making arrests.
- Effectively investigated traffic accidents, and ensured compliance with traffic laws through the issuance of violation citations.
- Continued to aid in the free flow of traffic by enforcing parking laws through education, signage, and citations.
- Managed the Crisis Resolution Unit & Crisis Intervention Response Team.
- Managed the Canine Unit and the Bicycle Patrol.
- Managed the Explosive Ordinance Disposal Unit.
- Managed the Traffic Callout Team, provided security for special events.
- Enforced various Court Orders (subpoenas, warrants, summons, & DV Writs).
- Managed the Reserve Officer Program.

### 2001 PERFORMANCE OBJECTIVES:

- Continue community-based and problem-oriented policing within the Community Services Division.
- Manage the Motorcycle Enforcement Program effectively.
- Efficiently respond to citizens' calls for service.
- Enforce the various laws through preventative measures & making arrests.
- Effectively investigate traffic accidents, and ensure compliance with traffic laws through the issuance of violation citations.
- Continue to aid in the free flow of traffic by enforcing parking laws, through the use of education, signage, and citations.
- Manage the Crisis Resolution Unit & Crisis Intervention Response Team.
- Manage the Canine Unit and the Bicycle Patrol.
- Manage the Explosive Ordinance Disposal Unit.
- Manage the Traffic Callout Team, provide security for special events.
- Enforce various Court Orders (subpoenas, warrants, summons, and DV Writs).

2001 P R O G R A M P L A N

DEPARTMENT: ANCH METROPOLITAN POLICE DIVISION: COMMUNITY SERVICES DIV

PROGRAM: Community Services

RESOURCES:

	1999 REVISED			2000 REVISED			2001 BUDGET		
	FT	PT	T	FT	PT	T	FT	PT	T
PERSONNEL:	270	0	0	270	0	0	272	0	0
PERSONAL SERVICES			\$22,947,440			\$20,903,280			\$21,412,730
SUPPLIES			92,260			105,610			105,610
OTHER SERVICES			1,481,820			595,090			595,090
CAPITAL OUTLAY			50,000			50,000			28,000
TOTAL DIRECT COST:			\$24,571,520			\$21,653,980			\$22,141,430
PROGRAM REVENUES:			\$ 4,252,800			\$ 5,121,800			\$ 5,121,800

WORK MEASURES:

- Total UCR arrests (adults)			11,700			11,700			11,700
- Total UCR arrests (juvenile)			2,800			2,800			2,800
- Total traffic accidents			9,100			9,100			9,100
- Total fatal traffic accidents			20			20			20
- Total hate crimes			10			10			10
- Total calls for services			250,000			250,000			250,000
- Parking tickets issued			42,150			64,800			64,800

90 SERVICE LEVELS ARE FUNDED FOR THE DEPARTMENT. THIS PROGRAM HAS LEVELS:

6, 7, 9, 14, 15, 16, 17, 18, 19, 60, 68, 83, 86, 88, 90,  
92

## 2001 PROGRAM PLAN

DEPARTMENT: ANCH METROPOLITAN POLICE DIVISION: RESOURCE DIVISION  
PROGRAM: Resource Division

### PURPOSE:

The Resource Division is responsible to provide direct support and service support to the operational work units of the Anchorage Police Department.

### 2000 PERFORMANCES:

- Operated/Dispatched E911/Calls for Service, 24 hour operation of the Emergency Operations Center; supported uniformed field services, investigations and technical services.
- Investigated staff complaints, lawsuits; performed background investigations
- Planned, organized, developed and coordinated training for APD employees.
- Provided forensic & photographic services to APD & supporting agencies.
- Received, bar coded, warehoused and disposed of property and evidence; monitored impound vehicles.
- Supported Crime Analysis and Police Information Systems.
- Maintained and stored all police reports and related documents.
- Provided financial/budget support for APD, processed payments/purchases.
- Provided prudent use and oversight of APD's contracts, grants, vehicle inventories, facility and supplies.
- Performed personnel and payroll support functions for APD, including recruitment for all vacant positions.

### 2001 PERFORMANCE OBJECTIVES:

- Operate/Dispatch E911/Calls for Service, 24 hour operation of the Emergency Operations Center, support uniformed field services, investigations and technical services.
- Investigate staff complaints/lawsuits; perform background investigations.
- Plan, organize, develop, and coordinate training for APD employees.
- Provide forensic & photographic services to APD & supporting agencies.
- Receive, bar code, warehouse, and dispose of property and evidence; monitor impound vehicles.
- Support Crime Analysis and Police Information Systems.
- Maintain and store all police reports and related documents.
- Provide financial/budget support, process all vendor payments, and purchases for APD.
- Provide prudent use and oversight for APD's contracts, grants, vehicle inventories, facility and supplies.
- Perform personnel and payroll support functions for APD, including recruitment for all vacant positions.



2001 PROGRAM PLAN

DEPARTMENT: ANCH METROPOLITAN POLICE DIVISION: RESOURCE DIVISION  
 PROGRAM: Resource Division  
 RESOURCES:

	1999 REVISED			2000 REVISED			2001 BUDGET		
	FT	PT	T	FT	PT	T	FT	PT	T
PERSONNEL:	174	0	0	174	0	0	165	0	0
PERSONAL SERVICES	\$10,393,030			\$10,612,650			\$10,328,970		
SUPPLIES	547,120			503,700			503,700		
OTHER SERVICES	5,554,220			4,854,710			4,606,010		
DEBT SERVICE	608,570			658,330			236,310		
CAPITAL OUTLAY	146,800			124,820			124,820		
TOTAL DIRECT COST:	\$17,249,740			\$16,754,210			\$15,799,810		
PROGRAM REVENUES:	\$ 1,419,400			\$ 1,454,400			\$ 1,454,400		

WORK MEASURES:

- Calls for police officer	252,000	252,000	252,000
- APSIN/NCIC audits, entries, inquiries	92,000	92,000	92,000
- Computer systems supported	280	280	280
- Evidence incoming and outgoing - pieces	110,000	110,000	110,000
- Number of police reports input into PLIMS/Tiburon 1998,1999	75,000	75,000	75,000
- Public inquiries for Evidence Auction info.	120,000	120,000	120,000
- 911 Emergency calls	132,000	132,000	132,000
- Accounting documents processed	8,000	8,000	8,000
- Number of grant applications prepared	6	6	6
- Brady Bill background checks	0	0	0
- Crime scene photographs development and processing	120,000	120,000	120,000
- Latent prints, crime cards and ID's made, evidence examined.	29,000	29,000	29,000
- Number of hours sworn and non-sworn employees received training	25,000	25,000	25,000
- Applications processed (sworn and non-sworn)	3,300	3,300	3,300
- Investigate complaints	50	50	50

90 SERVICE LEVELS ARE FUNDED FOR THE DEPARTMENT. THIS PROGRAM HAS LEVELS:

2, 3, 4, 5, 24, 25, 26, 27, 28, 29, 30, 31, 32, 33, 34,  
 35, 36, 37, 38, 39, 40, 41, 42, 43, 44, 45, 46, 47, 48, 49,  
 50, 51, 52, 55, 56, 57, 58, 59, 61, 62, 63, 65, 66, 67, 69,  
 70, 71, 72, 73, 76, 77, 78, 79, 80, 81, 84, 85, 87, 89, 91

**ANCHORAGE  
ANCHORAGE METROPOLITAN POLICE  
DEPARTMENT**

**OPERATING GRANT FUNDED PROGRAMS**

GRANT PROGRAM	FY 2000 (Grants beginning in 1999)				FY 2001 (Grants beginning in 2000)				LATEST GRANT PERIOD
	Amount	FT	PT	T	Amount	FT	PT	T	
GRANT FUNDING	\$ 1,175,034	15	0	0	\$ 1,293,596	15	0	0	
POLICE DEPARTMENT GENERAL GOVERNMENT OPERATING BUDGET	\$ 46,230,130	529	0	0	\$ 45,488,100	518	0	0	
	\$ 47,405,164	544	0	0	\$ 46,781,696	533	0	0	

GRANT FUNDING REPRESENTED 2.5% OF THE DEPARTMENT'S REVISED 2000 DIRECT COST OPERATING BUDGET.

GRANT FUNDING SHOULD ADD 2.8% TO DEPARTMENT'S DIRECT COST IN THE MAYOR'S 2001 OPERATING BUDGET.

SPECIAL INVESTIGATION FUND \$ 236,940 \$ 425,200 Upon completion

- Special fund to receive money seized or confiscated in the course of criminal investigations. These monies are received through court disposition.

LOCAL LAW ENFORCEMENT BLOCK GRANT \$ 600,412 \$ 584,319 2 years  
10/1/99 - 9/30/01

- Provide funds to underwrite projects to reduce crime and improve public safety.

COPS UNIVERSAL HIRING 1999 \$ n/a Delay grant start until late 2001 by postponing officers hire date 15 3 years from officer hire date

- Provide additional police officers as part of an overall plan to address crime and related problems through Community Policing (Total grant requested \$1,125,000)

STREET LEVEL DRUG CRIMES \$ 50,250 \$ 51,587 7/1/00 - 6/30/01

- Provide funding to enhance enforcement of drug abuse laws and to reduce drug use, sales and associated violent crimes.

HIGHWAY SAFETY GRANT: SPEED & SEATBELT ENFORCEMENT \$ 60,000 \$ n/a 12/20/99 - 9/30/2000

- Provide for enhanced enforcement of unsafe driving acts such as excess speed, failure to wear seatbelts and running red lights.

**ANCHORAGE  
ANCHORAGE METROPOLITAN POLICE  
DEPARTMENT**

**OPERATING GRANT FUNDED PROGRAMS**

GRANT PROGRAM	FY 2000 (Grants beginning in 1999)				FY 2001 (Grants beginning in 2000)				LATEST GRANT PERIOD
	Amount	FT	PT	T	Amount	FT	PT	T	
SEC. 157 GRANT TO SUPPORT INCREASE IN SEAT BELT USE	\$ n/a				\$ 175,000				5/1/00 - 6/15/01
- Increase seat belt use through increased awareness and enforcement.									
MOTOR CARRIER SAFETY ENFORCEMENT	\$ 65,000				\$ n/a				4/1/99 - 6/30/2000
- Provide for officer training in and enhanced enforcement of safe vehicles and drivers of commercial carriers.									
TOBACCO SALES TO MINORS	\$ 112,770				\$ 7,500				Through 9/25/2000
- Provide funds to enhance investigation of sales of tobacco products to minors and education about the dangers of tobacco use by minors.									
UNDERAGE DRINKING ENFORCEMENT	\$ 49,662				\$ 49,990				7/1/00 - 6/30/01
- Provide funds to assist in the enforcement of underage drinking laws and perform compliance checks.									
Total	\$ 1,175,034	0	0	0	\$ 1,293,596	15	0	0	

This page intentionally left blank.



BPAB010R  
09/27/00  
080940

M U N I C I P A L I T Y O F A N C H O R A G E  
2001 DEPARTMENT RANKING

DEPT: 24 -ANCH METROPOLITAN POLICE

DEPT	BUDGET UNIT/	SL	SVC
RANK	PROGRAM	CODE	LVL

1	4111-CHIEF OF POLICE	CB	1	Plan, organize, control, and lead the
	0781-Police Administration		OF	Anchorage Police Department in deliver-
	SOURCE OF FUNDS, THIS SVC LEVEL:		2	ing police services to the Anchorage
	TAX SUPPORT			Metropolitan Police Service Area.

PERSONNEL	PERSONAL	OTHER	DEBT	CAPITAL	
FT PT T	SERVICE	SUPPLIES	SERVICES	OUTLAY	TOTAL
3 0 0	263,760	7,010	4,320	0 1,400	276,490

2	4970-EMERGENCY 911 SERVICE	CB	1	Emergency 911 service revenue.
	0446-Resource Division		OF	
	SOURCE OF FUNDS, THIS SVC LEVEL:		2	

PROGRAM REVENUES 983,500

PERSONNEL	PERSONAL	OTHER	DEBT	CAPITAL	
FT PT T	SERVICE	SUPPLIES	SERVICES	OUTLAY	TOTAL
0 0 0	0	0	0	0 0	0

3	4990-PERSONNEL & PAYROLL	CB	1	Payroll clerk processes timecards for
	0446-Resource Division		OF	APD personnel and tracks overtime and
	SOURCE OF FUNDS, THIS SVC LEVEL:		3	leave requests. Troubleshoots payroll
	TAX SUPPORT			records and pay discrepancies.
				Researches payroll problems, and per-
				forms payroll audits.

PERSONNEL	PERSONAL	OTHER	DEBT	CAPITAL	
FT PT T	SERVICE	SUPPLIES	SERVICES	OUTLAY	TOTAL
1 0 0	56,670	7,400	45,510	0 0	109,580

4	4985-POLICE TRAINING	CB	1	Coordinate minimum training to qualify
	0446-Resource Division		OF	employees to meet the performance
	SOURCE OF FUNDS, THIS SVC LEVEL:		4	standards of his/her position.
	TAX SUPPORT			

PERSONNEL	PERSONAL	OTHER	DEBT	CAPITAL	
FT PT T	SERVICE	SUPPLIES	SERVICES	OUTLAY	TOTAL
2 0 0	171,890	53,350	25,270	0 75,000	325,510

BPAB010R  
09/27/00  
080940

M U N I C I P A L I T Y O F A N C H O R A G E  
2001 DEPARTMENT RANKING

DEPT: 24 -ANCH METROPOLITAN POLICE

DEPT RANK	BUDGET UNIT/ PROGRAM	SL CODE	SVC LVL	
5	4910-RESOURCE DIVISION ADMIN 0446-Resource Division	CB	1	Direct the sections responsible for
	SOURCE OF FUNDS, THIS SVC LEVEL:		OF	the operational support functions of the
	TAX SUPPORT		3	department: Resource and Fiscal
				Management, Dispatch, Crime Analysis and
				Information Systems, Property and
				Evidence, Forensics Lab, Training,
				Personnel, Records and Internal Affairs.

PERSONNEL			PERSONAL		OTHER	DEBT	CAPITAL	
FT	PT	T	SERVICE	SUPPLIES	SERVICES	SERVICE	OUTLAY	TOTAL
1	0	0	116,430	1,020	49,740	0	0	167,190

6	4610-COMMUNITY SVCS DIV ADMIN 0300-Community Services	CB	1	Plan and direct the deployment of police
	SOURCE OF FUNDS, THIS SVC LEVEL:		OF	officers for 24-hour coverage of patrol
	TAX SUPPORT		4	areas to protect persons and property,
				keep the peace, assist in the orderly
				flow of traffic, respond quickly to
				emergency calls for police assistance,
				and engage in various community-based
				and problem-oriented policing
				activities. (Added function of Community
				Service Patrol & Messenger, 6 positions)

PERSONNEL			PERSONAL		OTHER	DEBT	CAPITAL	
FT	PT	T	SERVICE	SUPPLIES	SERVICES	SERVICE	OUTLAY	TOTAL
1	0	0	113,560	2,020	4,630	0	0	120,210

7	4620-COMMUNITY SERVICES OPS 0300-Community Services	CB	1	Deploy Police Patrol units to patrol
	SOURCE OF FUNDS, THIS SVC LEVEL:		OF	24 hours 7 days per week. Respond only
	TAX SUPPORT		12	to emergency, life threatening situa-
	IGC SUPPORT			tions and serious criminal activities
	PROGRAM REVENUES 4,052,800			dependent upon immediate Police Officer
				response, and to provide a minimum
				effort in community-based/problem
				oriented policing tactics.

PERSONNEL			PERSONAL		OTHER	DEBT	CAPITAL	
FT	PT	T	SERVICE	SUPPLIES	SERVICES	SERVICE	OUTLAY	TOTAL
210	0	0	16,456,470	64,100	124,720	0	28,000	16,673,290

BPAB010R  
09/27/00  
080940

M U N I C I P A L I T Y O F A N C H O R A G E  
2001 DEPARTMENT RANKING

DEPT: 24 -ANCH METROPOLITAN POLICE

DEPT	BUDGET UNIT/	SL	SVC
RANK	PROGRAM	CODE	LVL

8	4630-COMMUNITY SVCS CITY WIDE	CB	1	Investigate crimes against persons re-
	0786-Citywide Services		OF	sulting in prosecution of offenders, to
	SOURCE OF FUNDS, THIS SVC LEVEL:		5	include: homicide, kidnapping, domestic
	TAX SUPPORT			violence, and sexual assaults of adults
				and children. Transport prisoners and
	PROGRAM REVENUES	5,000		serve court paperwork. Investigate
				fatal traffic accidents. Conduct pawn
				shop compliance.

PERSONNEL			PERSONAL	OTHER	DEBT	CAPITAL	
FT	PT	T	SERVICE	SERVICES	SERVICE	OUTLAY	TOTAL
51	0	0	4,482,060	64,410	0	23,370	4,580,960
			SUPPLIES				
			11,120				

9	4670-PARKING	CO	1	This service exists to receive
	0300-Community Services		OF	intragovernmental charges for costs
	SOURCE OF FUNDS, THIS SVC LEVEL:		3	associated with enforcement of parking
				violations.
				(Was Budget Unit 4971)
	PROGRAM REVENUES	700,000		

PERSONNEL			PERSONAL	OTHER	DEBT	CAPITAL	
FT	PT	T	SERVICE	SERVICES	SERVICE	OUTLAY	TOTAL
0	0	0	0	0	0	0	0
			SUPPLIES				
			0				

10	4630-COMMUNITY SVCS CITY WIDE	CO	2	Two additional personnel would be added
	0786-Citywide Services		OF	at this level, one for fatal accident
	SOURCE OF FUNDS, THIS SVC LEVEL:		5	investigation and one for warrants unit.
	TAX SUPPORT			

PERSONNEL			PERSONAL	OTHER	DEBT	CAPITAL	
FT	PT	T	SERVICE	SERVICES	SERVICE	OUTLAY	TOTAL
4	0	0	344,550	9,910	0	0	354,960
			SUPPLIES				
			500				

11	4630-COMMUNITY SVCS CITY WIDE	CO	3	Two additional personnel would be added
	0786-Citywide Services		OF	at this level. One for the warrant sec-
	SOURCE OF FUNDS, THIS SVC LEVEL:		5	tion and the other would be a second
	TAX SUPPORT			Sergeant to supervise the major crime
				unit.



BPAB010R  
 09/27/00  
 080940

M U N I C I P A L I T Y O F A N C H O R A G E  
 2001 DEPARTMENT RANKING

DEPT: 24 -ANCH METROPOLITAN POLICE

DEPT	BUDGET UNIT/	SL	SVC
RANK	PROGRAM	CODE	LVL

PERSONNEL			PERSONAL	SUPPLIES	OTHER	DEBT	CAPITAL	TOTAL
FT	PT	T	SERVICE		SERVICES	SERVICE	OUTLAY	
2	0	0	203,570	500	2,740	0	0	206,810

12	4630-COMMUNITY SVCS CITY WIDE	CO	4	Two additional personnel would be added
	0786-Citywide Services		OF	at this level, one for major crimes,
	SOURCE OF FUNDS, THIS SVC LEVEL:		5	increasing assignable cases. The
	TAX SUPPORT			other position would be the command
				officer for major crimes and warrants.

PERSONNEL			PERSONAL	SUPPLIES	OTHER	DEBT	CAPITAL	TOTAL
FT	PT	T	SERVICE		SERVICES	SERVICE	OUTLAY	
3	0	0	272,240	500	510	0	0	273,250

13	4630-COMMUNITY SVCS CITY WIDE	CO	5	An additional person will be added to
	0786-Citywide Services		OF	the Major Crime Unit. A domestic
	SOURCE OF FUNDS, THIS SVC LEVEL:		5	violence investigator will be added to
	TAX SUPPORT			the Warrants Unit.

PERSONNEL			PERSONAL	SUPPLIES	OTHER	DEBT	CAPITAL	TOTAL
FT	PT	T	SERVICE		SERVICES	SERVICE	OUTLAY	
1	0	0	89,230	0	0	0	0	89,230

14	4620-COMMUNITY SERVICES OPS	CO	2	Respond to criminal situations that
	0300-Community Services		OF	require a police officer. This includes
	SOURCE OF FUNDS, THIS SVC LEVEL:		12	reports of crimes after the fact,
	TAX SUPPORT			domestic disputes, threat of bodily
				harm, burglaries, thefts, and numerous
				varied requests for assistance, plus
				lesser events requiring police attention
				but not of a time-sensitive nature.

PERSONNEL			PERSONAL	SUPPLIES	OTHER	DEBT	CAPITAL	TOTAL
FT	PT	T	SERVICE		SERVICES	SERVICE	OUTLAY	
8	0	0	752,920	3,280	6,600	0	0	762,800

BPAB010R  
09/27/00  
080940

M U N I C I P A L I T Y O F A N C H O R A G E  
2001 DEPARTMENT RANKING

DEPT: 24 -ANCH METROPOLITAN POLICE

DEPT	BUDGET UNIT/	SL	SVC
RANK	PROGRAM	CODE	LVL

15	4620-COMMUNITY SERVICES OPS	CO	3	Respond to criminal situations that are
	0300-Community Services		OF	appropriate for community-based/problem
	SOURCE OF FUNDS, THIS SVC LEVEL:		12	oriented police methods
	TAX SUPPORT			(partnershiping).

PERSONNEL			PERSONAL		OTHER	DEBT	CAPITAL	
FT	PT	T	SERVICE	SUPPLIES	SERVICES	SERVICE	OUTLAY	TOTAL
12	0	0	1,081,930	5,800	5,560	0	0	1,093,290

---

16	4620-COMMUNITY SERVICES OPS	CO	4	Enhance all police services, but most
	0300-Community Services		OF	notably the community-based/problem
	SOURCE OF FUNDS, THIS SVC LEVEL:		12	oriented aspects, by the addition of the
	TAX SUPPORT			specialized services of canine, traffic
				enforcement, and misdemeanor follow-up
				units.

PERSONNEL			PERSONAL		OTHER	DEBT	CAPITAL	
FT	PT	T	SERVICE	SUPPLIES	SERVICES	SERVICE	OUTLAY	TOTAL
11	0	0	916,960	500	8,000	0	0	925,460

---

17	4620-COMMUNITY SERVICES OPS	CO	5	Provide adequate supplies and equipment
	0300-Community Services		OF	to discharge duties described in funding
	SOURCE OF FUNDS, THIS SVC LEVEL:		12	levels 1,2 & 3. This represents
	TAX SUPPORT			supplies for the Crisis Resolution Unit,
				the Critical Incident Response Team, the
				Explosive Ordinance Unit, the Canine
				Unit, and various specialty patrols like
				motorcycle and bicycle.

PERSONNEL			PERSONAL		OTHER	DEBT	CAPITAL	
FT	PT	T	SERVICE	SUPPLIES	SERVICES	SERVICE	OUTLAY	TOTAL
9	0	0	777,410	7,160	2,260	0	0	786,830

---

18	4620-COMMUNITY SERVICES OPS	CO	6	Officers would be utilized to augment
	0300-Community Services		OF	bicycle, foot, and park patrol. In
	SOURCE OF FUNDS, THIS SVC LEVEL:		12	addition, they would be utilized
	TAX SUPPORT			wherever needed to reduce response
				times and increase service.

BPAB010R  
09/27/00  
080940

MUNICIPALITY OF ANCHORAGE  
2001 DEPARTMENT RANKING

DEPT: 24 -ANCH METROPOLITAN POLICE

DEPT	BUDGET UNIT/	SL	SVC
RANK	PROGRAM	CODE	LVL

PERSONNEL	PERSONAL		OTHER	DEBT	CAPITAL	
FT PT T	SERVICE	SUPPLIES	SERVICES	SERVICE	OUTLAY	TOTAL
14 0 0	1,126,110	0	0	0	0	1,126,110

19	4620-COMMUNITY SERVICES OPS	CO	7	As a result of the 1997 voter approval
	0300-Community Services			of Propostion 3, the Anchorage Police
	SOURCE OF FUNDS, THIS SVC LEVEL:		12	Department is now responsible for the
	IGC SUPPORT			enforcement of the Municipal Code as it
				relates to parking enforcement. Sworn
				police officers are now delegated to
				enforce this code. This service level
				funds the added overtime of sworn
				police officers.

PERSONNEL	PERSONAL		OTHER	DEBT	CAPITAL	
FT PT T	SERVICE	SUPPLIES	SERVICES	SERVICE	OUTLAY	TOTAL
0 0 0	42,700	0	0	0	0	42,700

20	4640-COMMUNITY SVCS METRO	CB	1	Investigate mid-level drug crimes. In-
	0787-Metro			vestigate street level drug and vice
	SOURCE OF FUNDS, THIS SVC LEVEL:		4	crime. Provide personnel for special
	TAX SUPPORT			assignment directed at area-specific
	PROGRAM REVENUES	125,500		crimes. Provide for supervision of
				personnel.

PERSONNEL	PERSONAL		OTHER	DEBT	CAPITAL	
FT PT T	SERVICE	SUPPLIES	SERVICES	SERVICE	OUTLAY	TOTAL
6 0 0	640,560	6,020	158,070	0	0	804,650

21	4640-COMMUNITY SVCS METRO	CO	2	Provide personnel as needed for special
	0787-Metro			investigations into street level drug
	SOURCE OF FUNDS, THIS SVC LEVEL:		4	and vice crimes.
	TAX SUPPORT			

PERSONNEL	PERSONAL		OTHER	DEBT	CAPITAL	
FT PT T	SERVICE	SUPPLIES	SERVICES	SERVICE	OUTLAY	TOTAL
2 0 0	149,240	1,000	0	0	0	150,240

BPAB010R  
09/27/00  
080940

M U N I C I P A L I T Y O F A N C H O R A G E  
2001 DEPARTMENT RANKING

DEPT: 24 -ANCH METROPOLITAN POLICE

DEPT	BUDGET UNIT/	SL	SVC
RANK	PROGRAM	CODE	LVL

22	4640-COMMUNITY SVCS METRO 0787-Metro	CO	3	Provide command oversight for Special Enforcement projects. Ensure that the
	SOURCE OF FUNDS, THIS SVC LEVEL:		OF	Commanders of these projects have the
	TAX SUPPORT		4	necessary support and backup required
				to effectively command these problem
				areas.

PERSONNEL			PERSONAL		OTHER	DEBT	CAPITAL	
FT	PT	T	SERVICE	SUPPLIES	SERVICES	SERVICE	OUTLAY	TOTAL
1	0	0	110,270	1,000	0	0	0	111,270

23	4640-COMMUNITY SVCS METRO 0787-Metro	CO	4	Provide personnel needed to successfully
	SOURCE OF FUNDS, THIS SVC LEVEL:		OF	investigate assignments directed at area
	TAX SUPPORT		4	specific crimes.

PERSONNEL			PERSONAL		OTHER	DEBT	CAPITAL	
FT	PT	T	SERVICE	SUPPLIES	SERVICES	SERVICE	OUTLAY	TOTAL
1	0	0	63,390	0	0	0	0	63,390

24	4940-PROPERTY & EVIDENCE 0446-Resource Division	CB	1	Receive, process, bar code, and data
	SOURCE OF FUNDS, THIS SVC LEVEL:		OF	entry of new inventory into Tiburon.
	TAX SUPPORT		6	Maintain chain of custody, preserve
	PROGRAM REVENUES	22,000		evidence and dual control over sensitive
				items. Prepare warehoused evidence for
				release to officers for investigation
				and court. Monitor safekeep, evidence
				and impounded vehicles.

PERSONNEL			PERSONAL		OTHER	DEBT	CAPITAL	
FT	PT	T	SERVICE	SUPPLIES	SERVICES	SERVICE	OUTLAY	TOTAL
10	0	0	540,860	13,810	19,150	0	0	573,820

25	4940-PROPERTY & EVIDENCE 0446-Resource Division	CO	2	Determine proper ownership and return
	SOURCE OF FUNDS, THIS SVC LEVEL:		OF	recovered property to the legal owner.
	TAX SUPPORT		6	Provide proper notification and disposal
				of unclaimed or forfeited property.

BPAB010R  
09/27/00  
080940

MUNICIPALITY OF ANCHORAGE  
2001 DEPARTMENT RANKING

DEPT: 24 -ANCH METROPOLITAN POLICE

DEPT	BUDGET UNIT/	SL	SVC
RANK	PROGRAM	CODE	LVL

PERSONNEL	PERSONAL	OTHER	DEBT	CAPITAL	TOTAL
FT PT T	SERVICE	SERVICES	SERVICE	OUTLAY	
5 0 0	275,880	0	0	0	275,880
-----					

26	4940-PROPERTY & EVIDENCE 0446-Resource Division SOURCE OF FUNDS, THIS SVC LEVEL: TAX SUPPORT	CO	3 OF 6	Answer public inquiries for evidence, found property, bicycle and auction information. Data entry inquiries in Tiburon to determine retention of warehoused property and evidence. Schedule property release appointments.
----	---	----	--------------	--

PERSONNEL	PERSONAL	OTHER	DEBT	CAPITAL	TOTAL
FT PT T	SERVICE	SERVICES	SERVICE	OUTLAY	
1 0 0	52,800	0	0	0	52,800
-----					

27	4940-PROPERTY & EVIDENCE 0446-Resource Division SOURCE OF FUNDS, THIS SVC LEVEL: TAX SUPPORT	CO	4 OF 6	Oversee the daily operation of the property and Evidence section, supervise evidence and impound technicians, clerks and assure compliance with Municipal audit requirements, disposal and destruction timetables. Conduct monthly random checks to assure established procedures and applicable Municipal, State and Federal laws are being followed.
----	---	----	--------------	--

PERSONNEL	PERSONAL	OTHER	DEBT	CAPITAL	TOTAL
FT PT T	SERVICE	SERVICES	SERVICE	OUTLAY	
1 0 0	91,640	0	0	1,690	93,330
-----					

28	4950-POLICE INFO SYSTEMS 0446-Resource Division SOURCE OF FUNDS, THIS SVC LEVEL: TAX SUPPORT IGC SUPPORT	CB	1 OF 9	Expeditionously dispatch a police officer to emergency calls-for-service. Maintain constant communications with police officers. Transfer emergency calls to AST/AFD. Based on this level of staffing, overtime premium pay would be high to provide this service. Maintain the E911 system.
----	--	----	--------------	--

BPAB010R  
 09/27/00  
 080940

M U N I C I P A L I T Y O F A N C H O R A G E  
 2001 DEPARTMENT RANKING

DEPT: 24 -ANCH METROPOLITAN POLICE  
 DEPT BUDGET UNIT/  
 RANK PROGRAM

SL SVC  
 CODE LVL

PERSONNEL			PERSONAL	SUPPLIES	OTHER	DEBT	CAPITAL	TOTAL
FT	PT	T	SERVICE		SERVICES	SERVICE	OUTLAY	
35	0	0	2,476,500	4,000	314,100	0	0	2,794,600

29 4950-POLICE INFO SYSTEMS CO 2 Answer calls-for-service that are  
 0446-Resource Division OF of a non-emergency nature. Transfer  
 SOURCE OF FUNDS, THIS SVC LEVEL: 9 call-for-service from call-takers  
 TAX SUPPORT to dispatchers thru the PLIMS computer  
 system. Provide only minimum information  
 needed to officers responding to  
 calls-for-service.

PERSONNEL			PERSONAL	SUPPLIES	OTHER	DEBT	CAPITAL	TOTAL
FT	PT	T	SERVICE		SERVICES	SERVICE	OUTLAY	
10	0	0	664,170	2,000	0	0	0	666,170

30 4950-POLICE INFO SYSTEMS CO 3 Provide adequate information to officers  
 0446-Resource Division OF that are responding to calls. Also  
 SOURCE OF FUNDS, THIS SVC LEVEL: 9 provide additional information requested  
 TAX SUPPORT by officers, i.e. warrant checks, tow  
 vehicles, etc.

PERSONNEL			PERSONAL	SUPPLIES	OTHER	DEBT	CAPITAL	TOTAL
FT	PT	T	SERVICE		SERVICES	SERVICE	OUTLAY	
2	0	0	126,310	1,000	0	0	0	127,310

31 4950-POLICE INFO SYSTEMS CO 4 Plan and organize 24-hour operation  
 0446-Resource Division OF of the police emergency communications  
 SOURCE OF FUNDS, THIS SVC LEVEL: 9 center. Coordinate the communications  
 TAX SUPPORT section so that it dovetails with  
 IGC SUPPORT the needs of other sections within the  
 department. Handle personnel issues  
 that evolve from the employees assigned  
 to the section.

BPAB010R  
 09/27/00  
 080940

M U N I C I P A L I T Y O F A N C H O R A G E  
 2001 DEPARTMENT RANKING

DEPT: 24 -ANCH METROPOLITAN POLICE

DEPT	BUDGET UNIT/	SL	SVC
RANK	PROGRAM	CODE	LVL

PERSONNEL			PERSONAL	SUPPLIES	OTHER	DEBT	CAPITAL	TOTAL
FT	PT	T	SERVICE		SERVICES	SERVICE	OUTLAY	
2	0	0	139,750	1,000	990	0	0	141,740

32	4950-POLICE INFO SYSTEMS				CO	5	Provide information in a timely manner to officers handling calls-for-service.
	0446-Resource Division					OF	
	SOURCE OF FUNDS, THIS SVC LEVEL:					9	Examples would be warrant checks, wreckers at accident scenes, citizen requests received in the field. All calls would be entered into the departments PLIMS computer system.
	TAX SUPPORT						

PERSONNEL			PERSONAL	SUPPLIES	OTHER	DEBT	CAPITAL	TOTAL
FT	PT	T	SERVICE		SERVICES	SERVICE	OUTLAY	
4	0	0	231,680	0	0	0	0	231,680

33	4950-POLICE INFO SYSTEMS				CO	6	Enhance supervision and provide training of Dispatch personnel. Respond to
	0446-Resource Division					OF	
	SOURCE OF FUNDS, THIS SVC LEVEL:					9	Prosecutor's and officers' requests for copies of 911 tapes. Support expanded police service area and increased patrol officers.
	TAX SUPPORT						

PERSONNEL			PERSONAL	SUPPLIES	OTHER	DEBT	CAPITAL	TOTAL
FT	PT	T	SERVICE		SERVICES	SERVICE	OUTLAY	
3	0	0	188,650	0	0	0	0	188,650

34	4950-POLICE INFO SYSTEMS				CO	7	Repair and maintenance of the E-911
	0446-Resource Division					OF	
	SOURCE OF FUNDS, THIS SVC LEVEL:					9	Emergency Communications System.
	TAX SUPPORT						
	IGC SUPPORT						

PERSONNEL			PERSONAL	SUPPLIES	OTHER	DEBT	CAPITAL	TOTAL
FT	PT	T	SERVICE		SERVICES	SERVICE	OUTLAY	
0	0	0	0	0	90,000	0	0	90,000

BPAB010R  
09/27/00  
080940

M U N I C I P A L I T Y O F A N C H O R A G E  
2001 DEPARTMENT RANKING

DEPT: 24 -ANCH METROPOLITAN POLICE

DEPT	BUDGET UNIT/	SL	SVC
RANK	PROGRAM	CODE	LVL

35	4920-POLICE RECORDS	CB	1	Perform criminal history checks, enter
	0446-Resource Division		OF	traffic citations and serialized stolen
	SOURCE OF FUNDS, THIS SVC LEVEL:		13	property, prepare mandatory State re-
	TAX SUPPORT			quired monthly audit reports. Enter all
				pertinent information gathered on
	PROGRAM REVENUES			police reports into Tiburon computer.
	191,500			

PERSONNEL			PERSONAL	SUPPLIES	OTHER	DEBT	CAPITAL	TOTAL
FT	PT	T	SERVICE		SERVICES	SERVICE	OUTLAY	
32	0	0	1,699,180	6,960	5,630	0	5,600	1,717,370

36	4920-POLICE RECORDS	CB	2	Enter citation information into APSIN
	0446-Resource Division		OF	System and input and update these files.
	SOURCE OF FUNDS, THIS SVC LEVEL:		13	Conduct audits, entries and inquiries
	TAX SUPPORT			in APSIN/NCIC.

PERSONNEL			PERSONAL	SUPPLIES	OTHER	DEBT	CAPITAL	TOTAL
FT	PT	T	SERVICE		SERVICES	SERVICE	OUTLAY	
4	0	0	207,280	1,200	0	0	0	208,480

37	4920-POLICE RECORDS	CO	3	Respond to inquiries for reports from
	0446-Resource Division		OF	citizens, insurance companies, MOA
	SOURCE OF FUNDS, THIS SVC LEVEL:		13	departments, the legal system, other
	TAX SUPPORT			law enforcement departments and State or
				Federal agencies.

PERSONNEL			PERSONAL	SUPPLIES	OTHER	DEBT	CAPITAL	TOTAL
FT	PT	T	SERVICE		SERVICES	SERVICE	OUTLAY	
7	0	0	367,590	2,500	0	0	0	370,090



BPAB010R  
 09/27/00  
 080940

M U N I C I P A L I T Y O F A N C H O R A G E  
 2001 DEPARTMENT RANKING

DEPT: 24 -ANCH METROPOLITAN POLICE

DEPT	BUDGET UNIT/	SL	SVC
RANK	PROGRAM	CODE	LVL

38	4920-POLICE RECORDS	CO	4	Transcribe and type police reports.
	0446-Resource Division		0F	Receive, copy, file, and distribute all
	SOURCE OF FUNDS, THIS SVC LEVEL:		13	historical police reports and related
	TAX SUPPORT			documents.

PERSONNEL			PERSONAL		OTHER	DEBT	CAPITAL	
FT	PT	T	SERVICE	SUPPLIES	SERVICES	SERVICE	OUTLAY	TOTAL
6	0	0	313,840	0	0	0	0	313,840

39	4920-POLICE RECORDS	CO	5	Three positions to assist in the
	0446-Resource Division		0F	transcription and typing of police
	SOURCE OF FUNDS, THIS SVC LEVEL:		13	reports.
	TAX SUPPORT			

PERSONNEL			PERSONAL		OTHER	DEBT	CAPITAL	
FT	PT	T	SERVICE	SUPPLIES	SERVICES	SERVICE	OUTLAY	TOTAL
3	0	0	161,540	0	0	0	0	161,540

40	4920-POLICE RECORDS	CO	6	Provide two positions that are needed
	0446-Resource Division		0F	to support and handle the transcripition
	SOURCE OF FUNDS, THIS SVC LEVEL:		13	and typing related to police reports.
	TAX SUPPORT			

PERSONNEL			PERSONAL		OTHER	DEBT	CAPITAL	
FT	PT	T	SERVICE	SUPPLIES	SERVICES	SERVICE	OUTLAY	TOTAL
1	0	0	44,450	0	0	0	0	44,450

BPAB010R  
09/27/00  
080940

M U N I C I P A L I T Y O F A N C H O R A G E  
2001 DEPARTMENT RANKING

DEPT: 24 -ANCH METROPOLITAN POLICE  
DEPT BUDGET UNIT/  
RANK PROGRAM

SL SVC  
CODE LVL

41 4920-POLICE RECORDS CO 7 To provide better on-line access to all  
0446-Resource Division OF police records by scanning older records  
SOURCE OF FUNDS, THIS SVC LEVEL: 13 into Tiburon. This level also performs  
TAX SUPPORT filing and the retrieval of police  
records, regardless of whether they are  
on-line or in hard copy.

PERSONNEL			PERSONAL	SUPPLIES	OTHER	DEBT	CAPITAL	TOTAL
FT	PT	T	SERVICE		SERVICES	SERVICE	OUTLAY	
2	0	0	102,990	0	0	0	0	102,990

42 4920-POLICE RECORDS CO 8 One position that assists in the tran-  
0446-Resource Division OF scription of typing of police reports.  
SOURCE OF FUNDS, THIS SVC LEVEL: 13  
TAX SUPPORT

PERSONNEL			PERSONAL	SUPPLIES	OTHER	DEBT	CAPITAL	TOTAL
FT	PT	T	SERVICE		SERVICES	SERVICE	OUTLAY	
1	0	0	52,300	0	0	0	0	52,300

43 4920-POLICE RECORDS CO 9 This service level supports the  
0446-Resource Division OF personnel responsible for entering  
SOURCE OF FUNDS, THIS SVC LEVEL: 13 data from police reports into the  
TAX SUPPORT Tiburon system. Also assists in the  
transcription and typing of police  
reports.

PERSONNEL			PERSONAL	SUPPLIES	OTHER	DEBT	CAPITAL	TOTAL
FT	PT	T	SERVICE		SERVICES	SERVICE	OUTLAY	
2	0	0	90,320	0	0	0	0	90,320

BPAB010R  
09/27/00  
080940

M U N I C I P A L I T Y O F A N C H O R A G E  
2001 DEPARTMENT RANKING

DEPT: 24 -ANCH METROPOLITAN POLICE

DEPT RANK	BUDGET UNIT/ PROGRAM	SL CODE	SVC LVL	
44	4920-POLICE RECORDS 0446-Resource Division	CO	10	Additional clerks are needed for the direct clerical support of sworn positions.
	SOURCE OF FUNDS, THIS SVC LEVEL:		OF	
	TAX SUPPORT		13	

PERSONNEL			PERSONAL SERVICE	SUPPLIES	OTHER SERVICES	DEBT SERVICE	CAPITAL OUTLAY	TOTAL
FT	PT	T						
2	0	0	93,860	0	0	0	0	93,860

45	4980-FISCAL MANAGEMENT 0446-Resource Division	CB	1	Provide financial accounting and budgeting services to the department, prepare financial reports for police commanders, conduct financial analyses, project revenues, prepare contract documents, prepare Assembly Memorandums and Resolutions, act as department's contact with OMB, Finance, and Purchasing. Provide supervision of the Accounting Clerk position.
	SOURCE OF FUNDS, THIS SVC LEVEL:		OF	
	TAX SUPPORT		9	

PERSONNEL			PERSONAL SERVICE	SUPPLIES	OTHER SERVICES	DEBT SERVICE	CAPITAL OUTLAY	TOTAL
FT	PT	T						
1	0	0	64,760	3,060	120	0	5,000	72,940

46	4960-RESOURCE MANAGEMENT 0446-Resource Division	CO	2	Provide a centralized distribution and procurement point for the Police Department for uniforms, leather gear, brass, body armor, parkas and other equipment; order and stock all office supplies and forms; oversee receipt and distribution of bio-hazard equipment supplies; and shipping/receiving mail.
	SOURCE OF FUNDS, THIS SVC LEVEL:		OF	
	TAX SUPPORT		4	

PERSONNEL			PERSONAL SERVICE	SUPPLIES	OTHER SERVICES	DEBT SERVICE	CAPITAL OUTLAY	TOTAL
FT	PT	T						
1	0	0	56,780	40,000	7,800	0	0	104,580

BPAB010R  
09/27/00  
080940

M U N I C I P A L I T Y O F A N C H O R A G E  
2001 DEPARTMENT RANKING

DEPT: 24 -ANCH METROPOLITAN POLICE

DEPT	BUDGET UNIT/	SL	SVC
RANK	PROGRAM	CODE	LVL

47	4980-FISCAL MANAGEMENT 0446-Resource Division	CO	2	Process and track all purchase requisitions. Reconcile all vendor invoices against purchase orders and process for payment. Compile and distribute monthly the Commanders Financial Report and the Budget Unit Status Report.
	SOURCE OF FUNDS, THIS SVC LEVEL:		0F	
	TAX SUPPORT		9	

PERSONNEL			PERSONAL		OTHER	DEBT	CAPITAL	
FT	PT	T	SERVICE	SUPPLIES	SERVICES	SERVICE	OUTLAY	TOTAL
1	0	0	54,170	1,800	120	0	0	56,090

48	4980-FISCAL MANAGEMENT 0446-Resource Division	CO	3	Principal and interest of G.O. Bonds.
	SOURCE OF FUNDS, THIS SVC LEVEL:		0F	
	TAX SUPPORT		9	

PERSONNEL			PERSONAL		OTHER	DEBT	CAPITAL	
FT	PT	T	SERVICE	SUPPLIES	SERVICES	SERVICE	OUTLAY	TOTAL
0	0	0	0	0	0	236,310	0	236,310

49	4980-FISCAL MANAGEMENT 0446-Resource Division	CO	4	Provide matching funds required by grants awarded by the State of Alaska and the Federal government.
	SOURCE OF FUNDS, THIS SVC LEVEL:		0F	
	TAX SUPPORT		9	

PERSONNEL			PERSONAL		OTHER	DEBT	CAPITAL	
FT	PT	T	SERVICE	SUPPLIES	SERVICES	SERVICE	OUTLAY	TOTAL
0	0	0	0	0	74,590	0	0	74,590

50	4980-FISCAL MANAGEMENT 0446-Resource Division	CO	5	The coordination of department-wide maintenance and repair contracts for machinery and equipment.
	SOURCE OF FUNDS, THIS SVC LEVEL:		0F	
	TAX SUPPORT		9	

PERSONNEL			PERSONAL		OTHER	DEBT	CAPITAL	
FT	PT	T	SERVICE	SUPPLIES	SERVICES	SERVICE	OUTLAY	TOTAL
0	0	0	0	0	55,970	0	0	55,970

BPAB010R  
 09/27/00  
 080940

M U N I C I P A L I T Y O F A N C H O R A G E  
 2001 DEPARTMENT RANKING

DEPT: 24 -ANCH METROPOLITAN POLICE

DEPT	BUDGET UNIT/ RANK PROGRAM	SL CODE	SVC LVL	
51	4980-FISCAL MANAGEMENT 0446-Resource Division	CO	6	Police retiree medical insurance for
	SOURCE OF FUNDS, THIS SVC LEVEL:		OF	retired and active police officers.
	TAX SUPPORT		9	

PERSONNEL			PERSONAL		OTHER	DEBT	CAPITAL	
FT	PT	T	SERVICE	SUPPLIES	SERVICES	SERVICE	OUTLAY	TOTAL
0	0	0	0	0	1,832,210	0	0	1,832,210

52	4980-FISCAL MANAGEMENT 0446-Resource Division	CO	7	APD department operational travel costs.
	SOURCE OF FUNDS, THIS SVC LEVEL:		OF	
	TAX SUPPORT		9	

PERSONNEL			PERSONAL		OTHER	DEBT	CAPITAL	
FT	PT	T	SERVICE	SUPPLIES	SERVICES	SERVICE	OUTLAY	TOTAL
0	0	0	0	0	32,040	0	0	32,040

55	4930-POLICE INFO/CRIME ANAL 0446-Resource Division	CO	5	UPS (Uninterruptable Power Supply)
	SOURCE OF FUNDS, THIS SVC LEVEL:		OF	maintenance for three systems.
	TAX SUPPORT		6	

PERSONNEL			PERSONAL		OTHER	DEBT	CAPITAL	
FT	PT	T	SERVICE	SUPPLIES	SERVICES	SERVICE	OUTLAY	TOTAL
0	0	0	0	0	4,950	0	0	4,950

56	4930-POLICE INFO/CRIME ANAL 0446-Resource Division	CB	1	Enhance the efficiency and
	SOURCE OF FUNDS, THIS SVC LEVEL:		OF	effectiveness of the Department by
	TAX SUPPORT		6	procuring, developing, operating and
				maintaining automated information
				systems and crime analysis information.

BPAB010R  
09/27/00  
080940

M U N I C I P A L I T Y O F A N C H O R A G E  
2001 DEPARTMENT RANKING

DEPT: 24 -ANCH METROPOLITAN POLICE

DEPT	BUDGET UNIT/ PROGRAM	SL CODE	SVC LVL
------	-------------------------	------------	------------

PERSONNEL			PERSONAL	SUPPLIES	OTHER	DEBT	CAPITAL	TOTAL
FT	PT	T	SERVICE		SERVICES	SERVICE	OUTLAY	
6	0	0	442,310	0	143,750	0	21,980	608,040

---

57	4930-POLICE INFO/CRIME ANAL 0446-Resource Division	CO	2	Provide operations support and training for the APD network, E-mail and police dispatch workstations. Fifteen workstations and 550 "E-mail" users are supported by this level.
	SOURCE OF FUNDS, THIS SVC LEVEL: TAX SUPPORT		6	

PERSONNEL			PERSONAL	SUPPLIES	OTHER	DEBT	CAPITAL	TOTAL
FT	PT	T	SERVICE		SERVICES	SERVICE	OUTLAY	
2	0	0	110,060	0	5,800	0	0	115,860

---

58	4930-POLICE INFO/CRIME ANAL 0446-Resource Division	ND	3	Maintenance and licensing fees for the Tiburon System.
	SOURCE OF FUNDS, THIS SVC LEVEL: TAX SUPPORT		6	

PERSONNEL			PERSONAL	SUPPLIES	OTHER	DEBT	CAPITAL	TOTAL
FT	PT	T	SERVICE		SERVICES	SERVICE	OUTLAY	
1	0	0	57,120	0	102,360	0	0	159,480

---

59	4930-POLICE INFO/CRIME ANAL 0446-Resource Division	CO	4	Provide hardware and software support for the Anchorage Police Department.
	SOURCE OF FUNDS, THIS SVC LEVEL: TAX SUPPORT		6	Provide operations and training support for the police RMS data entry and FileMaker database systems. Sixty-five different databases are supported at this level.

PERSONNEL			PERSONAL	SUPPLIES	OTHER	DEBT	CAPITAL	TOTAL
FT	PT	T	SERVICE		SERVICES	SERVICE	OUTLAY	
0	0	0	790	0	0	0	0	790

---

BPAB010R  
09/27/00  
080940

MUNICIPALITY OF ANCHORAGE  
2001 DEPARTMENT RANKING

DEPT: 24 -ANCH METROPOLITAN POLICE

DEPT	BUDGET UNIT/	SL	SVC
RANK	PROGRAM	CODE	LVL

60	4670-PARKING	CO	2	Contract with the Anchorage Parking
	0300-Community Services		OF	Authority to collect and process fine
	SOURCE OF FUNDS, THIS SVC LEVEL:		3	revenue.

PROGRAM REVENUES 0

PERSONNEL			PERSONAL	SUPPLIES	OTHER	DEBT	CAPITAL	TOTAL
FT	PT	T	SERVICE					
0	0	0	0	0	281,180	0	0	281,180

61	4960-RESOURCE MANAGEMENT	CB	1	Resource Management provides operational
	0446-Resource Division		OF	administration for the Police Department
	SOURCE OF FUNDS, THIS SVC LEVEL:		4	in the areas of contract administration,
	TAX SUPPORT			grant writing and development, facility
	PROGRAM REVENUES			management and security, APD's inventory
	195,400			and supervision of department equipment
				and supplies.

PERSONNEL			PERSONAL	SUPPLIES	OTHER	DEBT	CAPITAL	TOTAL
FT	PT	T	SERVICE					
1	0	0	72,390	46,540	47,000	0	2,000	167,930

62	4960-RESOURCE MANAGEMENT	CO	3	The development, negotiation, and admin-
	0446-Resource Division		OF	istration of the uniform contract to
	SOURCE OF FUNDS, THIS SVC LEVEL:		4	meet department needs, APD's contractual
	TAX SUPPORT			obligation for prisoner services, as
				well as contracted facility repairs.

PERSONNEL			PERSONAL	SUPPLIES	OTHER	DEBT	CAPITAL	TOTAL
FT	PT	T	SERVICE					
0	0	0	0	171,620	1,404,000	0	0	1,575,620

63	4960-RESOURCE MANAGEMENT	CO	4	The development, negotiation, and admin-
	0446-Resource Division		OF	istration of the uniform cleaning
	SOURCE OF FUNDS, THIS SVC LEVEL:		4	contract to meet the department needs in
	TAX SUPPORT			accordance with the collective
				bargaining agreement between the
				Municipality of Anchorage and the
				Anchorage Police Department Employees
				Association.

BPAB010R  
 09/27/00  
 080940

MUNICIPALITY OF ANCHORAGE  
 2001 DEPARTMENT RANKING

DEPT: 24 -ANCH METROPOLITAN POLICE  
 DEPT BUDGET UNIT/  
 RANK PROGRAM

SL SVC  
 CODE LVL

PERSONNEL			PERSONAL	SUPPLIES	OTHER	DEBT	CAPITAL	TOTAL
FT	PT	T	SERVICE		SERVICES	SERVICE	OUTLAY	
0	0	0	0	0	130,000	0	0	130,000

64 4111-CHIEF OF POLICE  
 0781-Police Administration  
 SOURCE OF FUNDS, THIS SVC LEVEL:  
 TAX SUPPORT

CB 2 Plan and organize the deployment of  
 OF police personnel and equipment; direct  
 2 daily operations; establish policies,  
 procedures & standards of performance;  
 and when the Chief is absent, assume the  
 duties of the office. The Deputy Chief  
 also provides staff support for the Pub-  
 lic Safety Advisory Commission & the  
 Staff Inspections Unit, supplies relief  
 for the Chief's Jr Admin Officer.

PERSONNEL			PERSONAL	SUPPLIES	OTHER	DEBT	CAPITAL	TOTAL
FT	PT	T	SERVICE		SERVICES	SERVICE	OUTLAY	
3	0	0	253,900	16,420	3,400	0	0	273,720

65 4985-POLICE TRAINING  
 0446-Resource Division  
 SOURCE OF FUNDS, THIS SVC LEVEL:  
 TAX SUPPORT

CB 2 Coordinate minimum firearms training to  
 OF qualify sworn employees with firearms.  
 4 Establish firearms equipment standards  
 and provide safety inspections of  
 firearms.

PERSONNEL			PERSONAL	SUPPLIES	OTHER	DEBT	CAPITAL	TOTAL
FT	PT	T	SERVICE		SERVICES	SERVICE	OUTLAY	
1	0	0	87,140	55,000	0	0	0	142,140

66 4985-POLICE TRAINING  
 0446-Resource Division  
 SOURCE OF FUNDS, THIS SVC LEVEL:  
 TAX SUPPORT

CO 3 Coordinate minimum training on mandated  
 OF topics, such as first aid, and the use  
 4 of force for sworn personnel.

PERSONNEL			PERSONAL	SUPPLIES	OTHER	DEBT	CAPITAL	TOTAL
FT	PT	T	SERVICE		SERVICES	SERVICE	OUTLAY	
1	0	0	92,480	28,300	5,000	0	0	125,780



BPAB010R  
09/27/00  
080940

M U N I C I P A L I T Y O F A N C H O R A G E  
2001 DEPARTMENT RANKING

DEPT: 24 -ANCH METROPOLITAN POLICE

DEPT BUDGET UNIT/  
RANK PROGRAM

SL SVC  
CODE LVL

67 4985-POLICE TRAINING  
0446-Resource Division  
SOURCE OF FUNDS, THIS SVC LEVEL:  
TAX SUPPORT

CO 4 Improve the skills of APD non-sworn  
OF personnel by coordinating all department  
4 training, both inservice internal  
training and training offered by other  
agencies.

PERSONNEL			PERSONAL	SUPPLIES	OTHER	DEBT	CAPITAL	TOTAL
FT	PT	T	SERVICE		SERVICES	SERVICE	OUTLAY	
1	0	0	95,210	2,990	1,170	0	0	99,370

68 4610-COMMUNITY SVCS DIV ADMIN  
0300-Community Services  
SOURCE OF FUNDS, THIS SVC LEVEL:  
TAX SUPPORT

CB 2 Supply the Patrol administrative  
OF office with adequate operational  
4 supplies and equipment.

PERSONNEL			PERSONAL	SUPPLIES	OTHER	DEBT	CAPITAL	TOTAL
FT	PT	T	SERVICE		SERVICES	SERVICE	OUTLAY	
1	0	0	90,010	22,750	24,500	0	0	137,260

69 4995-INTERNAL AFFAIRS  
0446-Resource Division  
SOURCE OF FUNDS, THIS SVC LEVEL:  
TAX SUPPORT

CO 3 The background investigator is responsi-  
OF ble for the recruitment and pre-hire of  
3 qualified applicants.

PERSONNEL			PERSONAL	SUPPLIES	OTHER	DEBT	CAPITAL	TOTAL
FT	PT	T	SERVICE		SERVICES	SERVICE	OUTLAY	
1	0	0	92,040	30	2,700	0	0	94,770

70 4995-INTERNAL AFFAIRS  
0446-Resource Division  
SOURCE OF FUNDS, THIS SVC LEVEL:  
TAX SUPPORT

CB 1 Criminal and non-criminal complaints are  
OF investigated by the Internal Affairs  
3 Investigator. The Internal Affairs  
Investigator also supervises the Back-  
ground Unit.

BPAB010R  
 09/27/00  
 080940

M U N I C I P A L I T Y O F A N C H O R A G E  
 2001 DEPARTMENT RANKING

DEPT: 24 -ANCH METROPOLITAN POLICE

DEPT	BUDGET UNIT/	SL	SVC
RANK	PROGRAM	CODE	LVL

PERSONNEL			PERSONAL		OTHER	DEBT	CAPITAL	
FT	PT	T	SERVICE	SUPPLIES	SERVICES	SERVICE	OUTLAY	TOTAL
2	0	0	186,570	1,640	19,330	0	2,050	209,590

71	4995-INTERNAL AFFAIRS		CO	2	The primary background investigator is
	0446-Resource Division			OF	responsible for scheduling professional
	SOURCE OF FUNDS, THIS SVC LEVEL:			3	services. They also administer pre-hire
	TAX SUPPORT				testing and promotion testing for APD.

PERSONNEL			PERSONAL		OTHER	DEBT	CAPITAL	
FT	PT	T	SERVICE	SUPPLIES	SERVICES	SERVICE	OUTLAY	TOTAL
1	0	0	92,040	30	38,700	0	0	130,770

72	4910-RESOURCE DIVISION ADMIN		CO	3	This service level is responsible for
	0446-Resource Division			OF	the direct operational supervision of
	SOURCE OF FUNDS, THIS SVC LEVEL:			3	three sections in the division:
	TAX SUPPORT				Training, Personnel and Internal
	PROGRAM REVENUES	22,000			Affairs.

PERSONNEL			PERSONAL		OTHER	DEBT	CAPITAL	
FT	PT	T	SERVICE	SUPPLIES	SERVICES	SERVICE	OUTLAY	TOTAL
0	0	0	900	500	430	0	0	1,830

73	4910-RESOURCE DIVISION ADMIN		CO	2	Responsible for the overall operational
	0446-Resource Division			OF	direction of the Technical Services
	SOURCE OF FUNDS, THIS SVC LEVEL:			3	sections of the division.
	TAX SUPPORT				

PERSONNEL			PERSONAL		OTHER	DEBT	CAPITAL	
FT	PT	T	SERVICE	SUPPLIES	SERVICES	SERVICE	OUTLAY	TOTAL
2	0	0	209,940	500	430	0	0	210,870

BPAB010R  
 09/27/00  
 080940

M U N I C I P A L I T Y O F A N C H O R A G E  
 2001 DEPARTMENT RANKING

DEPT: 24 -ANCH METROPOLITAN POLICE

DEPT	BUDGET UNIT/	SL	SVC
RANK	PROGRAM	CODE	LVL

74	4120-PUBLIC AFFAIRS	CB	1	Responds to the demands of local televi-
	0791-Crime Prevention		OF	sion, radio and newspaper reporters.
	SOURCE OF FUNDS, THIS SVC LEVEL:		4	Creates presentations to inform the
	TAX SUPPORT			community of the responses and activi-
				ties of the department, its policies,
				and personnel. Responds to concerns of
				citizens. Maintains a number of inter-
				nal products designed to inform depart-
				ment personnel about activities and
				procedures.

PERSONNEL			PERSONAL		OTHER	DEBT	CAPITAL	
FT	PT	T	SERVICE	SUPPLIES	SERVICES	SERVICE	OUTLAY	TOTAL
2	0	0	129,330	8,270	77,020	0	3,400	218,020

75	4120-PUBLIC AFFAIRS	CB	2	Operate and maintain the department's
	0791-Crime Prevention		OF	Crime Stoppers hotline for citizen tips
	SOURCE OF FUNDS, THIS SVC LEVEL:		4	on crimes. Complete special projects
	TAX SUPPORT			which increase public awareness and that
				improve departmental morale.

PERSONNEL			PERSONAL		OTHER	DEBT	CAPITAL	
FT	PT	T	SERVICE	SUPPLIES	SERVICES	SERVICE	OUTLAY	TOTAL
1	0	0	62,920	3,700	900	0	0	67,520

76	4990-PERSONNEL & PAYROLL	CO	2	Personnel clerk maintains confidential
	0446-Resource Division		OF	& sensitive files on all APD employees,
	SOURCE OF FUNDS, THIS SVC LEVEL:		3	tracks personnel actions such as
	TAX SUPPORT			evaluations, tuition assistance and
				disciplinary actions. Performs needed
				research on personnel issues. Meets
				with judges on subpoenaed files.

PERSONNEL			PERSONAL		OTHER	DEBT	CAPITAL	
FT	PT	T	SERVICE	SUPPLIES	SERVICES	SERVICE	OUTLAY	TOTAL
2	0	0	110,910	0	400	0	0	111,310

BPAB010R  
 09/27/00  
 080940

M U N I C I P A L I T Y O F A N C H O R A G E  
 2001 DEPARTMENT RANKING

DEPT: 24 -ANCH METROPOLITAN POLICE

DEPT	BUDGET UNIT/	SL	SVC
RANK	PROGRAM	CODE	LVL

77	4990-PERSONNEL & PAYROLL	CO	3	Plan, organize, control payroll and
	0446-Resource Division		OF	personnel functions. Provide records
	SOURCE OF FUNDS, THIS SVC LEVEL:		3	management personnel with payroll
	TAX SUPPORT			information. Comply with and administer
				Federal, State and Municipal labor laws.
				Recruit personnel, process promotion,
				demotion, termination and transfers.
				Answer labor problems, respond to
				grievances, EEO complaints.

PERSONNEL			PERSONAL		OTHER	DEBT	CAPITAL	
FT	PT	T	SERVICE	SUPPLIES	SERVICES	SERVICE	OUTLAY	TOTAL
1	0	0	79,020	0	0	0	0	79,020

78	4955-CRIME LABORATORY	CB	1	Aid in solving crimes by: 1) fingerprint
	0446-Resource Division		OF	identification of suspects and other
	SOURCE OF FUNDS, THIS SVC LEVEL:		4	individuals involved in police investi-
	TAX SUPPORT			gations, 2) offering expert court testi-
				mony on lab findings, 3) photo-document
				crime scenes and evidence 4) preparing
				crime scene photos for presentation to
				court, and 5) working homicide and
				major felony crime scenes.

PERSONNEL			PERSONAL		OTHER	DEBT	CAPITAL	
FT	PT	T	SERVICE	SUPPLIES	SERVICES	SERVICE	OUTLAY	TOTAL
1	0	0	87,370	35,050	6,590	0	0	129,010

79	4955-CRIME LABORATORY	CB	2	Photo-document crime scenes and evidence
	0446-Resource Division		OF	for presentation to court for homicide
	SOURCE OF FUNDS, THIS SVC LEVEL:		4	and major felony cases. Examine items
	TAX SUPPORT			for latent prints. Compare and identify
				inked and latent prints. Testify in
				court regarding examinations.

PERSONNEL			PERSONAL		OTHER	DEBT	CAPITAL	
FT	PT	T	SERVICE	SUPPLIES	SERVICES	SERVICE	OUTLAY	TOTAL
1	0	0	74,510	14,400	810	0	11,500	101,220

BPAB010R  
09/27/00  
080940

M U N I C I P A L I T Y O F A N C H O R A G E  
2001 DEPARTMENT RANKING

DEPT: 24 -ANCH METROPOLITAN POLICE

DEPT RANK	BUDGET UNIT/ PROGRAM	SL CODE	SVC LVL	
80	4955-CRIME LABORATORY 0446-Resource Division	CO	3	Aid in solving crimes by producing crime scene photos and other evidentiary
	SOURCE OF FUNDS, THIS SVC LEVEL:		OF	identifying photographs.
	TAX SUPPORT		4	

PERSONNEL			PERSONAL SERVICE	SUPPLIES	OTHER SERVICES	DEBT SERVICE	CAPITAL OUTLAY	TOTAL
FT	PT	T						
1	0	0	53,910	8,000	2,000	0	0	63,910

81	4955-CRIME LABORATORY 0446-Resource Division	CO	4	This service level is necessary to maintain the fingerprint system (AFIS)
	SOURCE OF FUNDS, THIS SVC LEVEL:		OF	
	TAX SUPPORT		4	

PERSONNEL			PERSONAL SERVICE	SUPPLIES	OTHER SERVICES	DEBT SERVICE	CAPITAL OUTLAY	TOTAL
FT	PT	T						
0	0	0	0	0	8,350	0	0	8,350

82	4120-PUBLIC AFFAIRS 0791-Crime Prevention	CO	3	Trained a sworn officer, they serve on a rotating basis, how to respond to media queries and to inform the public about department activities.
	SOURCE OF FUNDS, THIS SVC LEVEL:		OF	Develops department public information policies and provides training to APD personnel.
	TAX SUPPORT		4	

PERSONNEL			PERSONAL SERVICE	SUPPLIES	OTHER SERVICES	DEBT SERVICE	CAPITAL OUTLAY	TOTAL
FT	PT	T						
1	0	0	76,350	0	0	0	0	76,350

83	4620-COMMUNITY SERVICES OPS 0300-Community Services	CV	8	Increase vacancy factor based on recent experience.
	SOURCE OF FUNDS, THIS SVC LEVEL:		OF	
	TAX SUPPORT		12	

PERSONNEL			PERSONAL SERVICE	SUPPLIES	OTHER SERVICES	DEBT SERVICE	CAPITAL OUTLAY	TOTAL
FT	PT	T						
0	0	0	421,210-	0	0	0	0	421,210-

BPAB010R  
 09/27/00  
 080940

M U N I C I P A L I T Y O F A N C H O R A G E  
 2001 DEPARTMENT RANKING

DEPT: 24 -ANCH METROPOLITAN POLICE

DEPT	BUDGET UNIT/	SL	SVC
RANK	PROGRAM	CODE	LVL

84	4920-POLICE RECORDS	CV	11	Increase vacancy factor in light of
	0446-Resource Division		OF	recent experience.
	SOURCE OF FUNDS, THIS SVC LEVEL:		13	
	TAX SUPPORT			

PERSONNEL			PERSONAL		OTHER	DEBT	CAPITAL	
FT	PT	T	SERVICE	SUPPLIES	SERVICES	SERVICE	OUTLAY	TOTAL
0	0	0	25,850-	0	0	0	0	25,850-

85	4950-POLICE INFO SYSTEMS	CV	8	Increase vacancy factor based on recent
	0446-Resource Division		OF	experience.
	SOURCE OF FUNDS, THIS SVC LEVEL:		9	
	TAX SUPPORT			
	IGC SUPPORT			

PERSONNEL			PERSONAL		OTHER	DEBT	CAPITAL	
FT	PT	T	SERVICE	SUPPLIES	SERVICES	SERVICE	OUTLAY	TOTAL
0	0	0	32,180-	0	0	0	0	32,180-

86	4610-COMMUNITY SVCS DIV ADMIN	CO	3	Maintain the records and other admini-
	0300-Community Services		OF	strative documents involving the manage-
	SOURCE OF FUNDS, THIS SVC LEVEL:		4	ment and control of deploying large
	TAX SUPPORT			numbers of police officers and K-9
				officers. Coordinate court appearances
				between department staff and the court
				system.

PERSONNEL			PERSONAL		OTHER	DEBT	CAPITAL	
FT	PT	T	SERVICE	SUPPLIES	SERVICES	SERVICE	OUTLAY	TOTAL
6	0	0	432,580	0	500	0	0	433,080

87	4940-PROPERTY & EVIDENCE	CO	5	Funds transferred from Public Works
	0446-Resource Division		OF	Department since Anchorage Police
	SOURCE OF FUNDS, THIS SVC LEVEL:		6	Department will administer and monitor
	TAX SUPPORT			the contract for towing of vehicles in
				rights-of-way.

BPAB010R  
09/27/00  
080940

MUNICIPALITY OF ANCHORAGE  
2001 DEPARTMENT RANKING

DEPT: 24 -ANCH METROPOLITAN POLICE

DEPT	BUDGET UNIT/	SL	SVC
RANK	PROGRAM	CODE	LVL

PERSONNEL	PERSONAL		OTHER	DEBT	CAPITAL	
FT PT T	SERVICE	SUPPLIES	SERVICES	SERVICE	OUTLAY	TOTAL
0 0 0	0	0	35,000	0	0	35,000

88 4670-PARKING  
0300-Community Services  
SOURCE OF FUNDS, THIS SVC LEVEL:

CO 3 Increase parking enforcement revenues  
OF by increased enforcement using pre-  
3 academy officers.

PROGRAM REVENUES 369,000

PERSONNEL	PERSONAL		OTHER	DEBT	CAPITAL	
FT PT T	SERVICE	SUPPLIES	SERVICES	SERVICE	OUTLAY	TOTAL
0 0 0	0	0	0	0	0	0

89 4970-EMERGENCY 911 SERVICE  
0446-Resource Division  
SOURCE OF FUNDS, THIS SVC LEVEL:

CO 2 Increase budgeted revenues from E911  
OF Surchage based on trend analysis.  
2

PROGRAM REVENUES 35,000

PERSONNEL	PERSONAL		OTHER	DEBT	CAPITAL	
FT PT T	SERVICE	SUPPLIES	SERVICES	SERVICE	OUTLAY	TOTAL
0 0 0	0	0	0	0	0	0

90 4620-COMMUNITY SERVICES OPS  
0300-Community Services  
SOURCE OF FUNDS, THIS SVC LEVEL:

CO 9 Budget for the increased personnel  
OF costs incurred to hire qualified  
12 officers prior to the start of an  
Academy so that they can enhance parking  
enforcement activities.  
The costs in this service level will be  
funded from increased revenues budgeted  
in the Parking Budget Unit, Fund 101-  
4670.

IGC SUPPORT  
PROGRAM REVENUES 0

PERSONNEL	PERSONAL		OTHER	DEBT	CAPITAL	
FT PT T	SERVICE	SUPPLIES	SERVICES	SERVICE	OUTLAY	TOTAL
0 0 0	43,290	0	0	0	0	43,290

BPAB010R  
09/27/00  
080940

MUNICIPALITY OF ANCHORAGE  
2001 DEPARTMENT RANKING

DEPT: 24 -ANCH METROPOLITAN POLICE

DEPT	BUDGET UNIT/	SL	SVC
RANK	PROGRAM	CODE	LVL

91	4980-FISCAL MANAGEMENT	CO	8	Fund cost increases in Police retiree
	0446-Resource Division		OF	medical insurance for retired and active
	SOURCE OF FUNDS, THIS SVC LEVEL:		9	police officers.
	TAX SUPPORT			

PERSONNEL			PERSONAL		OTHER	DEBT	CAPITAL	
FT	PT	T	SERVICE	SUPPLIES	SERVICES	SERVICE	OUTLAY	TOTAL
0	0	0	0	0	94,000	0	0	94,000

92	4620-COMMUNITY SERVICES OPS	10	Add funding to cover the Municipal costs
	0300-Community Services	OF	to hire 15 additional police officers
	SOURCE OF FUNDS, THIS SVC LEVEL:	12	and the costs in support of greater
	TAX SUPPORT		police activity. Beginning in December,
			2001, a COPS Universal Hiring Grant will
			assist in partial funding of salaries
			and benefit costs of 15 new officers.
			Capital funds are anticipated to be
			used to purchase the new vehicles for
			the new officers.

PERSONNEL			PERSONAL		OTHER	DEBT	CAPITAL	
FT	PT	T	SERVICE	SUPPLIES	SERVICES	SERVICE	OUTLAY	TOTAL
0	0	0	0	0	137,140	0	0	137,140

SUBTOTAL OF FUNDED SERVICE LEVELS, ANCH METROPOLITAN POLICE . . . . .

PERSONNEL			PERSONAL		OTHER	DEBT	CAPITAL	
FT	PT	T	SERVICE	SUPPLIES	SERVICES	SERVICE	OUTLAY	TOTAL
518	0	0	38,883,070	665,350	5,522,380	236,310	180,990	45,488,100

----- DEPARTMENT OF ANCH METROPOLITAN POLICE FUNDING LINE -----  
 . . . . . 45,488,100

93	4920-POLICE RECORDS	13	The police clerk positions in this level
	0446-Resource Division	OF	transcribe, copy, file, and type police
	SOURCE OF FUNDS, THIS SVC LEVEL:	13	reports.
	TAX SUPPORT		

PERSONNEL			PERSONAL		OTHER	DEBT	CAPITAL	
FT	PT	T	SERVICE	SUPPLIES	SERVICES	SERVICE	OUTLAY	TOTAL
4	0	0	194,100	0	0	0	0	194,100



BPAB010R  
09/27/00  
080940

M U N I C I P A L I T Y O F A N C H O R A G E  
2001 DEPARTMENT RANKING

DEPT: 24 -ANCH METROPOLITAN POLICE

DEPT	BUDGET UNIT/	SL	SVC
RANK	PROGRAM	CODE	LVL

94	4610-COMMUNITY SVCS DIV ADMIN		4	This Captain's position provides command oversight in APD patrol administration.
	0300-Community Services		OF	
	SOURCE OF FUNDS, THIS SVC LEVEL:		4	

TAX SUPPORT

PERSONNEL			PERSONAL		OTHER	DEBT	CAPITAL	
FT	PT	T	SERVICE	SUPPLIES	SERVICES	SERVICE	OUTLAY	TOTAL
1	0	0	80,050	0	0	0	0	80,050

95	4980-FISCAL MANAGEMENT		9	Leasing new machines will reduce the amount needed for machine repair.
	0446-Resource Division		OF	
	SOURCE OF FUNDS, THIS SVC LEVEL:		9	

TAX SUPPORT

PERSONNEL			PERSONAL		OTHER	DEBT	CAPITAL	
FT	PT	T	SERVICE	SUPPLIES	SERVICES	SERVICE	OUTLAY	TOTAL
0	0	0	0	0	25,000	0	0	25,000

96	4950-POLICE INFO SYSTEMS		9	Coordination and supervision of the Communications Section.
	0446-Resource Division		OF	
	SOURCE OF FUNDS, THIS SVC LEVEL:		9	

TAX SUPPORT  
IGC SUPPORT

PERSONNEL			PERSONAL		OTHER	DEBT	CAPITAL	
FT	PT	T	SERVICE	SUPPLIES	SERVICES	SERVICE	OUTLAY	TOTAL
1	0	0	73,380	0	0	0	0	73,380

97	4920-POLICE RECORDS		12	Plan and organize the use of personnel and equipment.
	0446-Resource Division		OF	
	SOURCE OF FUNDS, THIS SVC LEVEL:		13	

TAX SUPPORT

PERSONNEL			PERSONAL		OTHER	DEBT	CAPITAL	
FT	PT	T	SERVICE	SUPPLIES	SERVICES	SERVICE	OUTLAY	TOTAL
2	0	0	97,270	0	0	0	0	97,270

BPAB010R  
09/27/00  
080940

M U N I C I P A L I T Y O F A N C H O R A G E  
2001 DEPARTMENT RANKING

DEPT: 24 -ANCH METROPOLITAN POLICE

DEPT	BUDGET UNIT/ PROGRAM	SL CODE	SVC LVL
------	-------------------------	------------	------------

98	4620-COMMUNITY SERVICES OPS 0300-Community Services		11	The full year costs of 15 new officers partially funded by COPS grant.
	SOURCE OF FUNDS, THIS SVC LEVEL:		0F	
	TAX SUPPORT		12	

PERSONNEL			PERSONAL		OTHER	DEBT	CAPITAL	
FT	PT	T	SERVICE	SUPPLIES	SERVICES	SERVICE	OUTLAY	TOTAL
0	0	0	0	0	970,790	0	0	970,790

---

99	4620-COMMUNITY SERVICES OPS 0300-Community Services		12	Utilize current equipment with no new purchases in FY 2001.
	SOURCE OF FUNDS, THIS SVC LEVEL:		0F	
	TAX SUPPORT		12	

---

PERSONNEL			PERSONAL		OTHER	DEBT	CAPITAL	
FT	PT	T	SERVICE	SUPPLIES	SERVICES	SERVICE	OUTLAY	TOTAL
0	0	0	0	0	0	0	22,000	22,000

---

100	4120-PUBLIC AFFAIRS 0791-Crime Prevention		4	Operate Crime Stoppers hotline.
	SOURCE OF FUNDS, THIS SVC LEVEL:		0F	
	TAX SUPPORT		4	

---

PERSONNEL			PERSONAL		OTHER	DEBT	CAPITAL	
FT	PT	T	SERVICE	SUPPLIES	SERVICES	SERVICE	OUTLAY	TOTAL
1	0	0	53,120	0	0	0	0	53,120

---

101	4930-POLICE INFO/CRIME ANAL 0446-Resource Division		6	Supervise the development of automated information systems and crime analysis information.
	SOURCE OF FUNDS, THIS SVC LEVEL:		0F	
	TAX SUPPORT		6	

---

PERSONNEL			PERSONAL		OTHER	DEBT	CAPITAL	
FT	PT	T	SERVICE	SUPPLIES	SERVICES	SERVICE	OUTLAY	TOTAL
1	0	0	73,380	0	0	0	0	73,380

---

BPAB010R  
 09/27/00  
 080940

M U N I C I P A L I T Y O F A N C H O R A G E  
 2001 DEPARTMENT RANKING

DEPT: 24 -ANCH METROPOLITAN POLICE

DEPT	BUDGET UNIT/	SL	SVC
RANK	PROGRAM	CODE	LVL

102	4940-PROPERTY & EVIDENCE		6	Reduce the number of property
	0446-Resource Division		OF	technicians.
	SOURCE OF FUNDS, THIS SVC LEVEL:		6	
	TAX SUPPORT			

PERSONNEL			PERSONAL		OTHER	DEBT	CAPITAL	
FT	PT	T	SERVICE	SUPPLIES	SERVICES	SERVICE	OUTLAY	TOTAL
1	0	0	58,060	0	0	0	0	58,060

TOTALS FOR DEPARTMENT OF ANCH METROPOLITAN POLICE , FUNDED AND UNFUNDED . . . . .

PERSONNEL			PERSONAL		OTHER	DEBT	CAPITAL	
FT	PT	T	SERVICE	SUPPLIES	SERVICES	SERVICE	OUTLAY	TOTAL
529	0	0	39,512,430	665,350	6,518,170	236,310	202,990	47,135,250