

Municipality of Anchorage

— Alaska —

2012

**Public Works
Department**

Indirect Cost Proposal



Dan Sullivan
Mayor

Lucinda Mahoney
Chief Fiscal Officer

PUBLIC WORKS DEPARTMENTS

- 2012 -

INDIRECT COST PROPOSAL

TABLE OF CONTENTS

DESCRIPTION	PAGE
GENERAL INFORMATION	
Certification	1
Introduction	2
Federal Department of Health & Human Services letter dated August 19, 1986	3
Organizational Charts, 1/1/2010	4
INDIRECT COST RATES	
Development Services Department	8
Project Management & Engineering Department	9
Maintenance & Ops Dept, Street Maintenance	10
Traffic Department	11
2010 FINANCIAL INFORMATION	
Summary of Costs	
Development Services Department	12
Project Management & Engineering Department	13
Maintenance & Ops Dept, Street Maintenance	15
Traffic Department	17
Detail of Costs	18
Development Services Department	
Project Management & Engineering Department	
Maintenance & Ops Dept, Street Maintenance	
Traffic Department	
Detail of Intragovernmental Charges from Central Service Plan Units	35
Development Services Department	
Project Management & Engineering Department	
Maintenance & Ops Dept, Street Maintenance	
Traffic Department	
Detail of Intragovernmental Charges Treated as Direct Costs	43
Development Services Department	
Project Management & Engineering Department	
Maintenance & Ops Dept, Street Maintenance	
Traffic Department	
Detail of Unallowable Costs, Direct and Indirect	
Development Services Department	56
Project Management & Engineering Department	
Maintenance & Ops Dept, Street Maintenance	
Traffic Department	
INTRAGOVERNMENTAL CHARGE-OUT METHODOLOGIES	

CERTIFICATE OF INDIRECT COSTS

This is to certify that I have reviewed the indirect cost proposal submitted herewith and to the best of my knowledge and belief:

- (1) All costs included in this proposal to establish billing or final indirect cost rates for the period January 1 through December 31, 2012 are allowable in accordance with the requirements of the Federal award(s) to which they apply and OMB Circular A-87, "Cost Principles for State and Local Governments." Unallowable costs have been adjusted for in allocating costs as indicated in the Central Services Plan.
- (2) All costs included in this proposal are properly allocable to Federal awards on the basis of a beneficial or a causal relationship between the expense incurred and the agreements to which they are allocated in accordance with applicable requirements. Further, the same costs that have been treated as indirect costs have not been claimed as direct costs. Similar types of costs have been accounted for consistently and the Federal Government will be notified of any accounting changes that would affect the predetermined rate.
- 3) All costs are reported on a GAAP basis for the most recent year completed, or Municipal fiscal year 2010, which is the calendar year 2010.

I declare the foregoing is true and correct

Ross Russell, ACTING CFO
(Signature)
Date: 3/12/2012

Lucinda Mahoney
Chief Fiscal Officer
Municipality of Anchorage
Anchorage, Alaska

William J. Wilks
(Signature)
Date: 12/31/11

William J. Wilks
Preparer
AKT LLP
800 East Diamond Road STE 3-670
Anchorage, Alaska

INTRODUCTION to INDIRECT COST PROPOSAL

This document presents the Indirect Cost Proposal for the Municipality of Anchorage's several departments that had previously been one Public Works Department. The document is prepared for the period January 1, 2012 through December 31, 2012. This proposal supports our departments' claim to indirect costs on grants and contracts with Federal and State government agencies. Costs presented in this proposal are based on calendar year 2010 (CY10) actual expenses.

One indirect cost rate is developed for each department. This percentage of indirect costs is computed based on total direct costs for the department. Since most grants with Municipal employee support are billed for that support through the Municipal IGCS (Intragovernmental Charge System) the salaries and benefits do not appear as identifiable salaries and benefits amounts upon which to calculate an indirect cost rate based on direct salaries or salaries and benefits.

Costs included in the indirect cost rates include intragovernmental charges from department and division administrative units. Indirect costs also include a share of the allocated central service units' costs as identified in the Municipality of Anchorage's 2012 Central Services Plan. In addition, intragovernmental charges from central service units, department and division charging units have been adjusted to subtract costs that are unallowable according to OMB Circular A-87, "Cost Principles for State and Local Governments."



DEPARTMENT OF HEALTH & HUMAN SERVICES

Office of the
Regional Director

Region X
M/S 202
2901 Third Avenue
Seattle, WA 98121

August 19, 1986

Mr. Bob Smith
Municipal Manager
Municipality of Anchorage
Pouch 6-650
Anchorage, Alaska 99502-0650

Dear Mr. Smith:

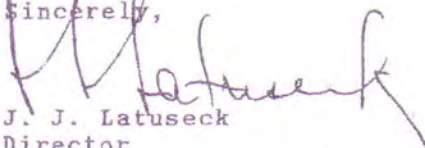
As the cognizant Federal agency, this is to inform you that future central services cost allocation plans and departmental/divisional indirect cost proposals will not have to be submitted for review by this office.

You are advised that central services cost allocation plans and departmental/divisional indirect cost proposals must be prepared in accordance with the appropriate Federal cost principles and available as of the time a claim is made against a Federal award. The documentation in support of the claim must be retained for a period of three years.

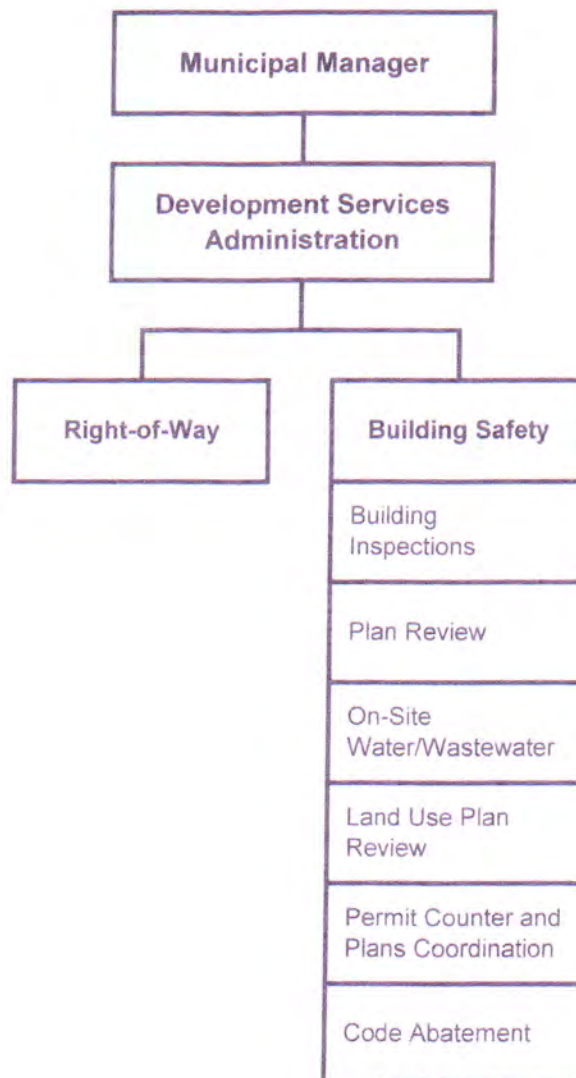
This policy will remain in effect until advised otherwise by this office or a newly designated cognizant Federal agency.

We remain available to answer technical questions or otherwise provide information consistent with the functions of this office.

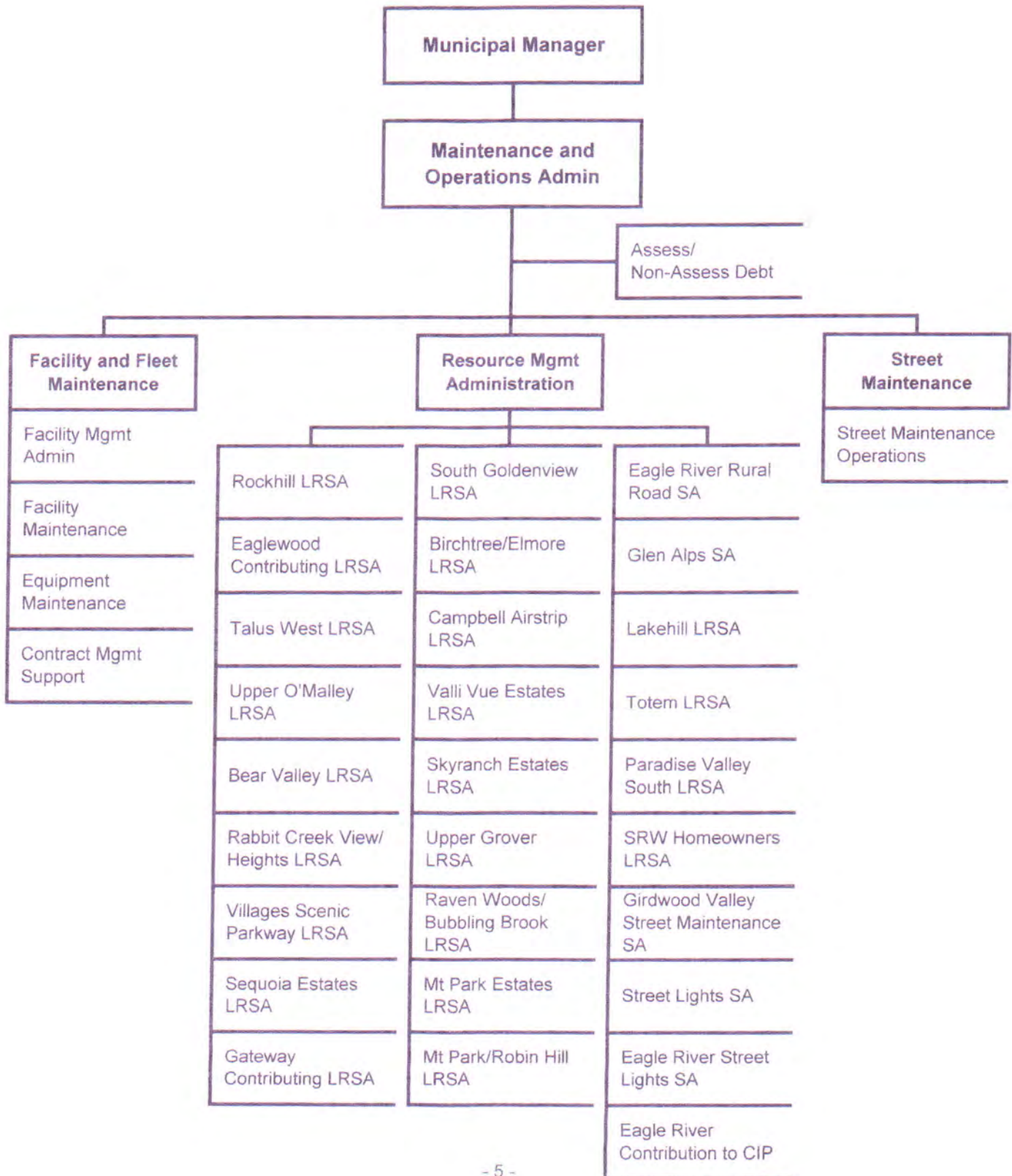
Sincerely,


J. J. Latuseck
Director
Division of Cost Allocation

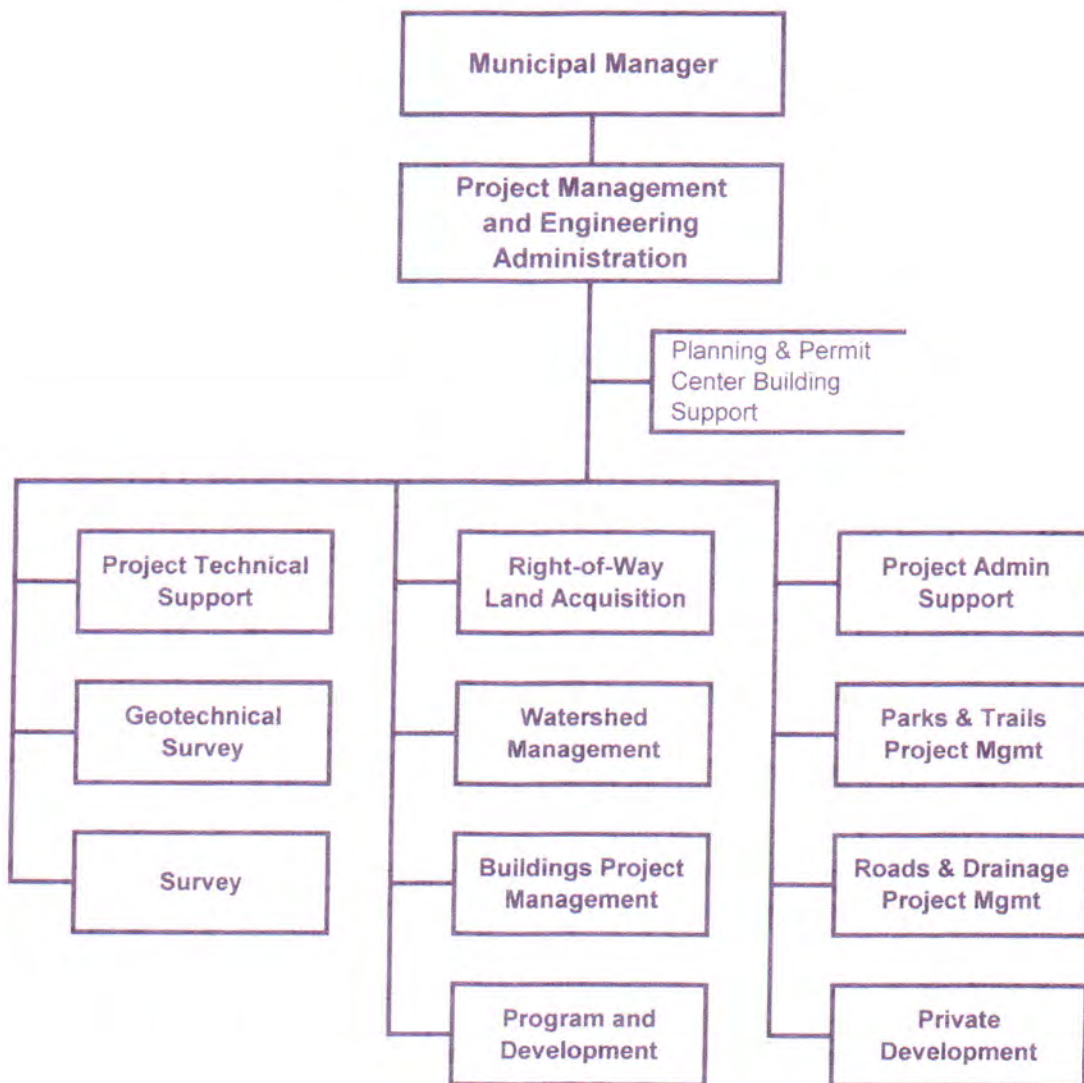
DEVELOPMENT SERVICES



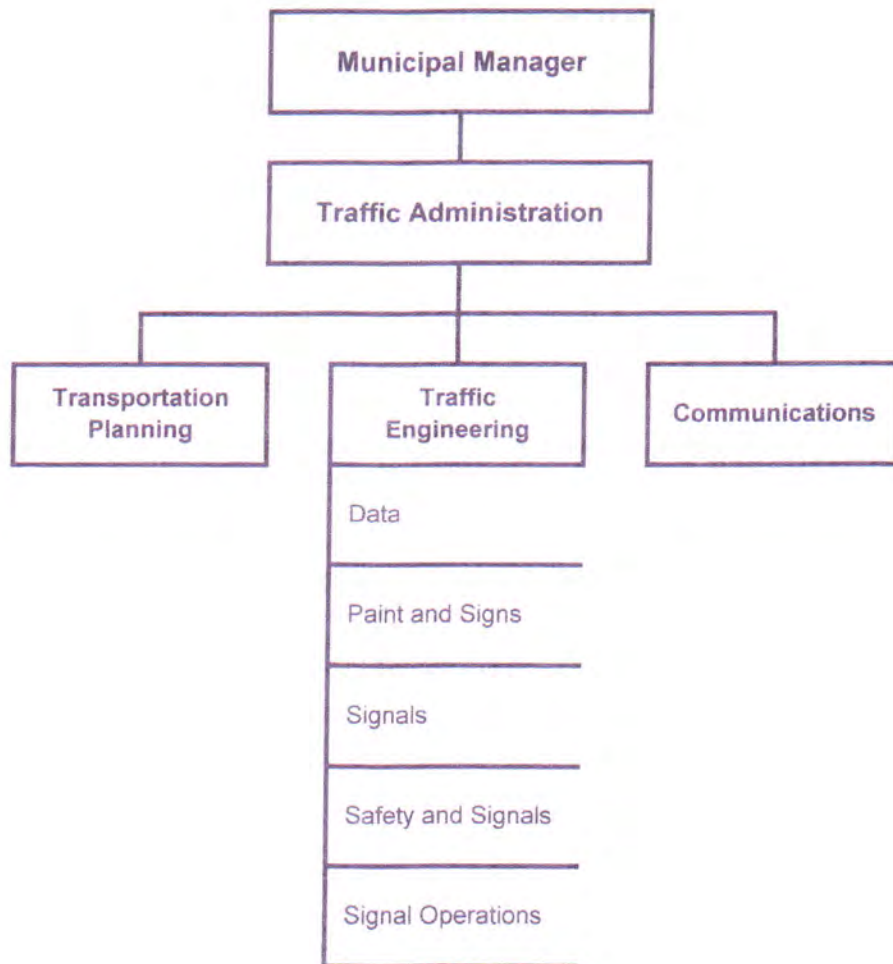
MAINTENANCE AND OPERATIONS



PROJECT MANAGEMENT AND ENGINEERING



TRAFFIC



PUBLIC WORKS DEPARTMENTS

- 2012 -

INDIRECT COST PROPOSAL

TABLE OF CONTENTS

DESCRIPTION	PAGE
INDIRECT COST RATES	
Development Services Department	8
Project Management & Engineering Department	9
Maintenance & Ops Dept, Street Maintenance	10
Traffic Department	11

INDIRECT COST RATE COMPUTATION

DEVELOPMENT SERVICES DEPARTMENT

COST ITEM	AMOUNT
Actual Indirects	1,688,448
Allocation of Net Costs (over/underbilled costs) as Indirects From:	
Dept Admin.	300,027
Other Departmental Support Units	0
Total Indirects	\$1,988,475
Base (Total Directs)	7,663,057
2012 Rate	25.9%

INDIRECT COST RATE COMPUTATION

PROJECT MGMT AND ENGINEERING DEPARTMENT

<u>COST ITEM</u>	<u>AMOUNT</u>
Actual Indirects	4,464,373
Allocation of Net Costs (over/underbilled costs) as Indirects From:	
Dept Admin.	(129,786)
Other Departmental Support Units	184,535
Total Indirects	<u>4,519,122</u>
Base (Total Direct)	<u><u>23,437,100</u></u>
2012 Rate	19.3%

INDIRECT COST RATE COMPUTATION

MAINTENANCE AND OPERATIONS DEPARTMENT

STREET MAINTENANCE DIVISION only

<u>COST ITEM</u>	<u>AMOUNT</u>
Actual Indirects	3,473,167
Allocation of Net Costs (over/underbilled costs) as Indirects From:	
Dept Admin.	312,339
Other Departmental Support Units	0
Total Indirects	<u>3,785,506</u>
Base (Total Directs)	<u>32,106,681</u>
2012 Rate	11.8%

INDIRECT COST RATE COMPUTATION

TRAFFIC DEPARTMENT

<u>COST ITEM</u>	<u>AMOUNT</u>
Actual Indirects	1,236,524
Allocation of Net Costs (over/underbilled costs) as Indirects From:	
Dept Admin.	(41,614)
Other Departmental Support Units	0
Total Indirects	<u>\$1,194,911</u>
Base (Total Directs)	<u><u>7,540,821</u></u>
2012 Rate	15.8%

PUBLIC WORKS DEPARTMENTS

- 2012 -


INDIRECT COST PROPOSAL

TABLE OF CONTENTS

DESCRIPTION	PAGE
2010 FINANCIAL INFORMATION	
Summary of Costs	
Development Services Department	12
Project Management & Engineering Department	13
Maintenance & Ops Dept, Street Maintenance	15
Traffic Department	17
Detail of Costs	18
Development Services Department	
Project Management & Engineering Department	
Maintenance & Ops Dept, Street Maintenance	
Traffic Department	
Detail of Intragovernmental Charges from Central Service Plan Units	35
Development Services Department	
Project Management & Engineering Department	
Maintenance & Ops Dept, Street Maintenance	
Traffic Department	
Detail of Intragovernmental Charges Treated as Direct Costs	43
Development Services Department	
Project Management & Engineering Department	
Maintenance & Ops Dept, Street Maintenance	
Traffic Department	
Detail of Unallowable Costs, Direct and Indirect	
Development Services Department	56
Project Management & Engineering Department	
Maintenance & Ops Dept, Street Maintenance	
Traffic Department	



**Municipality of Anchorage
Indirect Cost Proposal
Using Results as of December 31, 2010**

															
Dept ID	Description	Direct Expenditures	IGC Expenditures	Total Direct and IGC Expenditures	Total Billings (IGC) & Program Revenues	Net Costs	Adjustment for Billings to Non-Chargeout units	Net Costs, After Adj	Non-Allowable Expense Adj				Adjusted Net Allowable Costs	Allowable IGCs Treated as Indirect Costs	Allowable Directs
									Total Charges From Central Services Plan IGCs	% Not Allowable (from CSP)	From Central Services Plan	Within Unit			
DEVELOPMENT SERVICES															
7510	Building Safety Admin	333,715	846,263	1,179,978	(770,089)	409,889	-	409,889	594,546	14.27%	84,824	25,038	300,027	126,253	944,327
7520	Land Use Enforcement	923,233	158,970	1,082,203	(71,793)	1,010,410	71,793	1,082,203	75,261	14.27%	10,738	885	1,070,580	818,686	3,215,890
7530	Building Inspection	3,403,566	1,241,866	4,645,431	(4,921,227)	(275,796)	4,921,227	4,645,431	726,184	14.27%	103,605	507,250	4,034,576	101,051	1,239,644
7540	Plan Review	1,187,938	171,031	1,358,968	(1,181,327)	177,641	1,181,327	1,358,968	24,213	14.27%	3,455	14,819	1,340,694	35,850	412,440
7542	On-Site Water & Wastewater	402,097	47,116	449,213	(424,868)	24,346	424,868	449,213	5,300	14.27%	756	167	448,290	21,523	230,671
7543	Land Use Plan Review	224,527	28,112	252,639	(241,974)	10,665	241,974	252,639	3,007	14.27%	429	15	252,194	102,930	1,200,363
7552	Bulding Counter	624,356	128,077	752,434	(756,075)	(3,641)	-	(3,641)	27,426	14.27%	3,913	-	(7,554)	452,759	419,722
7560	Right-of-Way	1,120,325	577,149	1,697,473	(1,258,107)	439,366	1,258,107	1,697,473	69,884	14.27%	9,970	34,381	1,653,122	29,395	7,663,057
7570	Code Abatement	410,281	39,934	450,215	(47,779)	402,436	47,779	450,215	6,436	14.27%	918	180	449,117		
	Total Development Services	8,630,037	3,238,517	11,868,554	(9,673,238)	2,195,316	8,147,074	10,342,390	1,532,255		218,608	582,735	9,541,047	1,688,448	



**Municipality of Anchorage
Indirect Cost Proposal
Using Results as of December 31, 2010**

														Non-Allowable Expense Adj				
Dept ID	Description	Direct Expenditures	IGC Expenditures	Total Direct and IGC Expenditures	Total Billings (IGC) & Program Revenues	Net Costs	Adjustment for Billings to Non-Chargeout units	Net Costs, After Adj	Total Charges From Central Services Plan IGCs	% Not Allowable (from CSP)	From Central Services Plan	Within Unit	Adjusted Net Allowable Costs	Allowable IGCs Treated as Indirect Costs	Allowable Directs			
PROJECT MANAGEMENT & ENGINEERING																		
1272	AW Communications 2003 Bond	-	-	-	-	-	-	-	-	14.27%	-	-	-	-	-			
1273	AW Communications 2004 Bond	-	-	-	-	-	-	-	-	14.27%	-	-	-	-	-			
1702	2002 Fire Station Bonds	-	-	-	-	-	-	-	-	14.27%	-	-	-	-	-			
1704	04 Fire Station Bond PME	-	-	-	-	-	-	-	-	14.27%	-	192,949	80,693	-	80,693			
1705	2004 AMPSA Buildings Bonds	258,678	14,963	273,641	(273,641)	-	273,641	273,641	-	14.27%	-	-	-	-	-			
7002	2002 ARDSA GO BOND AUTH D	-	-	-	-	-	-	-	-	14.27%	-	-	-	-	-			
7003	2003 ARDSA GO BOND Auth D	-	-	-	-	-	-	-	-	14.27%	-	-	-	-	-			
7004	2004 ARDSA GO Bond Auth'd	-	-	-	-	-	-	-	-	14.27%	-	55,239	4,730	-	4,730			
7005	2005 ARDSA GO Bond Auth D	59,969	-	59,969	(59,969)	-	59,969	59,969	-	14.27%	-	61,803	81,801	-	81,801			
7006	2006 ARDSA GO Bond Auth D	143,604	-	143,604	(4,521,372)	(4,377,768)	4,521,372	143,604	-	14.27%	-	6,291,876	1,381,224	-	1,381,224			
7007	2007 ARDSA GO BOND AUTH D	7,513,830	159,270	7,673,100	(13,553,082)	(5,879,982)	13,553,082	7,673,100	-	14.27%	240	4,798,275	7,372,653	64,168	7,308,485			
7008	2008 Ardsa Go Bond Auth'd	10,735,767	1,435,400	12,171,167	(19,408,378)	(7,237,211)	19,408,378	12,171,167	1,681	14.27%	-	20,108	(11,321)	-	(11,321)			
7202	Parks & Trails Capital Grants, 461 Fun	589	8,198	8,787	(17,640)	(8,853)	17,640	8,787	-	14.27%	-	-	-	-	-			
7203	APRSA Capital Grants	-	-	-	-	-	-	-	-	14.27%	-	-	-	-	-			
7244	South Anch Special Assessment	-	-	-	(77,412)	(77,412)	77,412	-	-	14.27%	-	-	148,200	127,056	21,144			
7248G	Leg Pass Through Grants	-	148,200	148,200	(148,200)	-	148,200	148,200	-	14.27%	(55)	-	35,623	(331)	35,954			
7247G	USFWS Grants	35,052	516	35,568	(35,568)	-	35,568	35,568	(386)	14.27%	-	-	147,173	-	147,173			
7251	Other Misc Appropriations	151,285	-	151,285	(160,041)	(8,756)	160,041	151,285	-	14.27%	-	4,112	233,433	(24,499)	257,932			
7252	Istea Ardsa	237,583	(4,620)	232,963	(465,926)	(232,963)	465,926	232,963	-	14.27%	-	(470)	233,433	318,001	6,386,956			
7253	Legislative Grants ARDSA	23,040,239	1,298,876	24,339,114	(48,678,228)	(24,339,114)	48,678,228	24,339,114	-	14.27%	-	17,634,158	6,704,957	-	302,221			
7254	Legis Matching Grants ARDSA	512,826	182,569	695,395	(692,978)	2,417	692,978	695,395	-	14.27%	-	393,174	302,221	-	-			
7261	Revolving S/A Admin	-	-	-	-	-	-	-	-	14.27%	-	1,784,984	3,154,809	369,694	2,785,115			
7262	Legislative Grants Misc	4,121,735	818,058	4,939,793	(9,879,586)	(4,939,793)	9,879,586	4,939,793	-	14.27%	-	-	36,840	4,746	32,094			
7264	Girdwood Valley ROADS&DRAINAGE	31,304	5,536	36,840	(73,680)	(36,840)	73,680	36,840	-	14.27%	-	-	430,385	-	430,385			
7265	Eagle River Other State Grants	430,385	-	430,385	(860,770)	(430,385)	860,770	430,385	-	14.27%	-	-	-	-	-			
7266	Girdwood Valley FTA Grants	-	-	-	-	-	-	-	-	14.27%	-	-	-	-	-			
7269	Miscellaneous Appropriations	137,387	11,498	148,885	(668,273)	(519,388)	668,273	148,885	2,078	14.27%	296	-	148,589	-	148,589			
7271	Eagle River Area Grants	1,937	-	1,937	(3,875)	(1,937)	3,875	1,937	-	14.27%	-	2	1,936	-	1,936			
7271G	NPDES	173,859	58,617	232,476	(323,929)	(91,453)	323,929	232,476	1,478	14.27%	211	-	232,265	-	232,265			
72716G	Flood Plain Mapping 2006	-	-	-	-	-	-	-	-	14.27%	-	-	-	-	-			
72728G	Sand lake Watershed Leg 08	-	-	-	-	-	-	-	-	14.27%	-	-	-	-	-			
72756G	ADF&G PCSRF Creeks CD MGR	129,561	16,505	146,066	(146,066)	-	146,066	146,066	23,840	14.27%	3,401	-	142,665	13,799	128,865			
7276	PW Areawide Cap Projects	625,811	8,647	634,457	(1,231,989)	(597,532)	1,231,989	634,457	-	14.27%	-	83,205	551,253	-	551,253			
72776G	NRCS Little Rabbit Creek 06	-	-	-	-	-	-	-	-	14.27%	-	-	-	-	-			
7278	ADEC 50/50 Grants	(13,308)	-	(13,308)	(10,119)	(23,427)	10,119	(13,308)	-	14.27%	-	(13,308)	-	-	-			
72786G	Water Qual/Monitoring/Educ	-	-	-	-	-	-	-	-	14.27%	-	-	-	-	-			
7281	PW/ARSA ISTEPA Projects	136,601	-	136,601	(758,467)	(621,866)	758,467	136,601	-	14.27%	-	-	136,601	-	136,601			
7295	CBERRRSA TEA21/FHWA Grants	-	-	-	-	-	-	-	-	14.27%	-	-	-	-	-			
7296	HB163 Public Works	-	-	-	(0)	(0)	0	-	-	14.27%	-	-	-	-	-			
7310	Project Mgmt & Eng Admin	351,295	911,912	1,263,207	(1,263,101)	106	-	106	689,458	14.27%	98,366	31,526	(129,786)	-	-			
7320	Project Technical Support	756,329	422,529	1,178,858	(1,169,528)	9,329	-	9,329	6,814	14.27%	972	-	8,357	-	-			
7321	Geotechnical Survey	383,691	228,013	611,703	(611,703)	-	-	-	20,951	14.27%	2,989	425	(3,414)	-	-			
7322	Survey	271,939	167,537	439,475	(401,847)	37,628	-	37,628	1,799	14.27%	257	-	37,372	-	-			
7323	ROW Land Acquisition	197,640	233,245	430,885	(421,571)	9,314	-	9,314	1,648	14.27%	235	-	9,079	-	-			
7324	Watershed Management	1,328,478	271,442	1,599,921	(363,678)	1,236,243	363,678	1,599,921	9,795	14.27%	1,397	23,064	1,575,459	189,304	1,386,155			
7326	Program & Development	184,998	75,265	260,263	(186,486)	73,778	186,486	260,263	1,380	14.27%	197	-	260,067	63,344	196,723			
7325	Plan & Permit Ctr Bldg Support	24,960	-	24,960	(24,960)	-	-	-	-	14.27%	-	-	-	-	-			
7330	Special Assessments	-	-	-	-	-	-	-	-	14.27%	-	-	-	-	-			
7331	Project Admin Support	419,026	863,667	1,282,693	(1,186,333)	96,360	-	96,360	641,540	14.27%	91,529	-	4,831	-	-			
7340	Project Management, Parks & Trails	361,762	143,492	505,254	(436,375)	68,879	-	68,879	3,193	14.27%	456	-	68,424	-	-			

Municipality of Anchorage
Indirect Cost Proposal
Using Results as of December 31, 2010



Dept ID	Description	Direct Expenditures	IGC Expenditures	Total Direct and IGC Expenditures	Total Billings (IGC) & Program Revenues	Net Costs	Adjustment for Billings to Non-Chargeout units	Net Costs, After Adj	Non-Allowable Expense Adj					Adjusted Net Allowable Costs	Allowable IGCs Treated as Indirect Costs	Allowable Directs
									Total Charges From Central Services Plan IGCs	% Not Allowable (from CSP)	From Central Services Plan	Within Unit				
7360	Project Management, Roads & Drainag	2,346,110	1,352,169	3,698,279	(3,635,398)	62,881	-	62,881	20,992	14.27%	2,995	-	59,887	-	-	720,769
7390	Private Development	578,633	652,705	1,231,338	(1,225,374)	5,965	1,225,374	1,231,338	116,508	14.27%	16,622	-	1,214,716	493,947	-	5,167
7655	ARDSA CIB	5,019	149	5,167	(16,455)	(11,288)	16,455	5,167	-	14.27%	-	-	5,167	-	-	-
7669	1999 GO ARDSA Bonds - Aut/Un	-	-	-	-	-	-	-	-	14.27%	-	-	-	-	-	-
7670	2000 GO ARDSA Bonds	-	-	-	-	-	-	-	-	14.27%	-	2,500	94,259	-	-	94,259
7672	Campbell Lake Spec Asmt	94,473	2,286	96,759	(96,759)	-	96,759	96,759	-	14.27%	-	-	6,472	-	-	6,472
7707	Traffic Sign/Signal Reserve	6,472	-	6,472	(75,376)	(68,903)	75,376	6,472	-	14.27%	-	-	-	-	-	-
7728	2007 Bonds - Signal Pre-Empt	-	-	-	-	-	-	-	-	14.27%	-	-	-	-	-	-
7729	2007 Bonds-Traffic	-	-	-	-	-	-	-	-	14.27%	-	-	-	-	-	-
7734	Traffic CIP 2004 Bond	-	-	-	-	-	-	-	-	14.27%	-	-	-	-	-	-
7754	Intersection Safety Grants	151,602	53,624	205,225	(410,451)	(205,225)	410,451	205,225	-	14.27%	-	129,464	75,761	-	-	75,761
7009	2009 ARDSA Bonds	5,444,403	4,509,350	9,953,754	(36,131,757)	(26,178,003)	36,131,757	9,953,754	253	14.27%	36	6,600,876	3,352,841	2,845,144	-	507,698
7255	F St Contr Assets Fr Civic	-	-	-	-	-	-	-	-	14.27%	-	-	-	-	-	-
7270	ISTEA Funds	-	-	-	-	-	-	-	-	14.27%	-	-	-	-	-	-
7274	Ship Creek Culvert Replacement	-	-	-	-	-	-	-	-	14.27%	-	-	-	-	-	-
7286	Other Eagle River CIP Funding	39,000	-	39,000	(39,000)	-	39,000	39,000	-	14.27%	-	-	-	-	-	-
7404	Street Mtnce-2004 Projects	-	-	-	-	-	-	-	-	-	-	-	-	-	-	-
	Total Project Mngmt & Engineering	61,410,526	14,049,617	75,460,143	(149,745,342)	(74,285,199)	140,594,526	66,309,327	1,543,020		220,144	38,093,962	27,956,221	4,464,373		23,437,100
ALLOCATIONS of UNALLOWABLE COSTS FROM ADMIN UNITS																
	UNIT				Amount (over)/under billed	2010 Distribution Percent	Division	Flow Thru								
7310	Project Mgmt & Eng Admin				(129,786)	100%	within PM&E Dept Divisions	(129,786)								
						0%	to Non-Allocating Unit(s)	0								
								(129,786)								
7320	Project Technical Support				8,357	100%	within PM&E Dept Divisions	8,357								
7321	Geotechnical Services				(3,414)	100%	within PM&E Dept Divisions	(3,414)								
7322	Survey				37,372	100%	within PM&E Dept Divisions	37,372								
7323	ROW Land Acquisition				9,079	100%	within PM&E Dept Divisions	9,079								
7330	Bldgs Project Mgmt				0	0%	within PM&E Dept Divisions	0								
7331	Project Admin Support				4,831	100%	within PM&E Dept Divisions	4,831								
7340	Parks & Trails Project Mgmt				68,424	100%	within PM&E Dept Divisions	68,424								
7360	ARDSA Roads Project Mgmt				59,887	100%	within PM&E Dept Divisions	59,887								
								184,535								



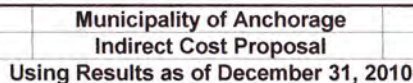
**Municipality of Anchorage
Indirect Cost Proposal
Using Results as of December 31, 2010**

Dept ID	Description	Direct Expenditures	IGC Expenditures	Total Direct and IGC Expenditures	Total Billings (IGC) & Program Revenues	Net Costs	Adjustment for Billings to Non-Chargeout units	Net Costs, After Adj	Non-Allowable Expense Adj				Adjusted Net Allowable Costs	Allowable IGCs Treated as Indirect Costs	Allowable Directs
									Total Charges From Central Services Plan IGCs	% Not Allowable (from CSP)	From Central Services Plan	Within Unit			
7190	Eagle River CIP Mill Levy, 419 Fund	533,023	34,210	567,233	(3,884,181)	(3,316,948)	3,884,181	567,233	-	14.27%	-	533,023	34,210	29,329	4,881
7196	CBERRRSA Mill Levy 2006	-	-	-	-	-	-	-	-	14.27%	-	-	-	-	-
7197	CBERRRSA Mill Levy 2007	28,396	-	28,396	(28,396)	-	28,396	28,396	-	14.27%	-	-	28,396	-	28,396
7198	CBERRRSA Mill Levy 2008	-	860	860	(860)	-	860	860	-	14.27%	-	-	860	-	860
7192	CBERRRSA State Grants	6	15,500	15,506	(31,013)	(15,506)	31,013	15,506	-	14.27%	-	-	15,506	13,289	2,218
7194	CBERRRSA Mill Levy 2004	-	-	-	-	-	-	-	-	14.27%	-	-	-	-	-
7195	CBERRRSA Mill Levy 2005	-	-	-	-	-	-	-	-	14.27%	-	-	-	-	-
7269	Miscellaneous Appropriations	137,387	11,498	148,885	(668,273)	(519,388)	668,273	148,885	2,078	14.27%	296	-	148,589	-	148,589
7294	Legislative Grants-PW	-	-	-	-	-	-	-	-	14.27%	-	-	-	-	-
7306	Girdwood Trail Improvement	16,865	3,725	20,590	(41,179)	(20,590)	41,179	20,590	-	14.27%	-	16,865	3,725	-	3,725
7403	Street Mtnc - CIP Projects	-	-	-	-	-	-	-	-	14.27%	-	-	-	-	-
7410	Street Maintenance Admin	269,603	1,422,538	1,692,141	(990,658)	701,483	-	701,483	177,735	14.27%	25,358	11,575	664,550	1,215,627	-
7429	Resource Management Admin	659,627	80,549	740,176	(740,176)	-	-	-	67,321	14.27%	9,605	3,548	(13,153)	34,390	-
7430	Street Maintenance Operations	20,287,803	2,389,414	22,677,217	(813,564)	21,863,653	813,564	22,677,217	1,792,576	14.27%	255,748	63,844	22,357,624	1,485,491	20,872,133
7431	Rockhill LRSA	37,721	5,310	43,031	-	43,031	-	43,031	-	14.27%	-	-	43,031	4,552	38,479
7432	Eaglewood Contributing RSA	111,586	1,900	113,486	-	113,486	-	113,486	-	14.27%	-	111,586	1,900	1,629	271
7433	Talus West LRSA	156,960	11,230	168,190	-	168,190	-	168,190	-	14.27%	-	-	168,190	9,628	158,562
7434	Upper O'Malley LRSA	587,685	72,400	660,085	-	660,085	-	660,085	-	14.27%	-	-	660,085	62,071	598,015
7435	Bear Valley LRSA	49,067	5,660	54,727	-	54,727	-	54,727	-	14.27%	-	-	54,727	4,593	50,134
7436	Rabbit Creek View/Heights LRSA	68,230	9,150	77,380	-	77,380	-	77,380	-	14.27%	-	-	77,380	7,845	69,535
7437	Villages Scenic Parkway LRSA	3,111	2,100	5,211	-	5,211	-	5,211	-	14.27%	-	-	5,211	1,749	3,463
7438	Sequoia Estates LRSA	5,055	2,690	7,745	-	7,745	-	7,745	-	14.27%	-	-	7,745	2,306	5,439
7439	Gateway Contributing RSA	2,223	50	2,273	-	2,273	-	2,273	-	14.27%	-	2,223	50	43	7
7440	South Goldenview RRSA	484,262	60,720	544,982	-	544,982	-	544,982	-	14.27%	-	-	544,982	51,849	493,133
7441	Birchtree/Elmore LRSA	260,527	28,500	289,027	-	289,027	-	289,027	-	14.27%	-	-	289,027	24,434	264,593
7442	Campbell Airstrip Rd LRSA	152,395	20,600	172,995	(26,450)	146,545	26,450	172,995	-	14.27%	-	-	172,995	17,661	155,334
7443	Valli Vue Estates LRSA	44,557	13,200	57,757	-	57,757	-	57,757	-	14.27%	-	-	57,757	11,213	46,544
7444	Skyranch LRSA	24,366	3,730	28,096	-	28,096	-	28,096	-	14.27%	-	-	28,096	3,198	24,898
7445	Upper Grover LRSA	5,991	1,630	7,621	-	7,621	-	7,621	-	14.27%	-	-	7,621	1,397	6,224
7446	Ravenwood LRSA	9,703	1,880	11,583	-	11,583	-	11,583	-	14.27%	-	-	11,583	1,612	9,971
7447	Mt Park Estates LRSA	24,573	3,690	28,263	-	28,263	-	28,263	-	14.27%	-	-	28,263	3,164	25,100
7448	Mt Park/Robin Hill LRSA	137,723	16,100	153,823	-	153,823	-	153,823	-	14.27%	-	-	153,823	13,690	140,133
7449	Eagle River Rural Road SA	3,154,969	216,874	3,371,843	(79,367)	3,292,476	79,367	3,371,843	114,430	14.27%	16,326	3,783	3,351,734	161,018	3,190,716
7450	Street Maint Glen Alps	256,248	32,926	289,175	-	289,175	-	289,175	2,980	14.27%	425	40,000	248,750	27,710	221,040
7451	Lakehill LRSA	39,450	5,690	45,140	-	45,140	-	45,140	-	14.27%	-	-	45,140	4,878	40,261
7452	Totem LRSA	17,913	3,770	21,683	-	21,683	-	21,683	-	14.27%	-	-	21,683	3,180	18,503
7453	Paradise Valley South LRSA	3,205	1,350	4,555	-	4,555	-	4,555	-	14.27%	-	-	4,555	1,157	3,397
7456	SRW Homeowners LRSA	41,190	5,500	46,690	-	46,690	-	46,690	-	14.27%	-	-	46,690	4,715	41,975
7460	Street Maint Girdwood	609,066	66,971	676,037	(2,424)	673,613	2,424	676,037	6,524	14.27%	931	-	675,107	57,401	617,705
7470	Street Lighting	4,386,542	198,802	4,585,345	(430,341)	4,155,004	430,341	4,585,345	95,490	14.27%	13,624	-	4,571,721	168,438	4,403,283
7472	Eagle River Street Light SA	210,718	24,515	235,232	(9,655)	225,577	9,655	235,232	16,723	14.27%	2,386	-	232,847	21,017	211,829
7473	E/R Contribution to CIP	3,316,948	26,702	3,343,650	-	3,343,650	-	3,343,650	13,329	14.27%	1,902	3,316,948	24,800	22,892	1,908
7661	Old City Road Debt	-	-	-	-	-	-	-	-	14.27%	-	-	-	-	-
7671	ARDSA Road Debt	48,813,070	461	48,813,531	(20,476,196)	28,337,335	(28,337,335)	-	461	14.27%	66	28,501,671	(28,501,737)	-	-
7675	CSA District #1	-	-	-	(455)	455	-	-	-	14.27%	-	-	-	-	-
7676	District 1P87	-	-	-	(1,941)	1,941	-	-	-	14.27%	-	-	-	-	-
72464G	PM-10 Dust Control Tora 2004	-	-	-	-	-	-	-	-	14.27%	-	-	-	-	-
7454	Glen Alps SA-Capital Prgm	111,650	-	111,650	(151,650)	(40,000)	151,650	111,650	-	14.27%	-	-	111,650	-	111,650
7591	Hansen Project	105,065	-	105,065	(612,315)	(507,250)	612,315	105,065	-	14.27%	-	26,471	78,594	-	78,594
7668	98 GO ARDSA Bonds Auth'd	-	-	-	-	-	-	-	-	14.27%	-	-	-	-	-
7199	CBERRRSA MILL LEVY 2009	1,227,990	185	1,228,175	(1,228,175)	-	1,228,175	1,228,175	-	14.27%	-	1,212,990	15,185	-	15,185



**Municipality of Anchorage
Indirect Cost Proposal
Using Results as of December 31, 2010**

Dept ID	Description	Direct Expenditures	IGC Expenditures	Total Direct and IGC Expenditures	Total Billings (IGC) & Program Revenues	Net Costs	Adjustment for Billings to Non- Chargeout units	Net Costs, After Adj	Non-Allowable Expense Adj			Adjusted Net Allowable Costs	Allowable IGCs Treated as Indirect Costs	Allowable Directs
									Total Charges From Central Services Plan IGCs	% Not Allow- able (from CSP)	From Central Services Plan	Within Unit		
	Total Street Maintenance	86,392,470	4,802,579	91,195,050	(30,217,268)	60,977,782	(20,327,097)	40,650,685	2,289,646		326,666	33,844,527	6,479,492	32,106,681

17

2010 All Expend and Revenues

Unit	Ledger	Acct	Fund	DeptID	Sum Total Amt	Year
MOABU	ACTUALS	2301	451	1705	1,446.25	2,010
MOABU	ACTUALS	3101	451	1705	33,214.39	2,010
MOABU	ACTUALS	3601	451	1705	0.00	2,010
MOABU	ACTUALS	3803	451	1705	29,640.98	2,010
MOABU	ACTUALS	3814	451	1705	1,428.00	2,010
MOABU	ACTUALS	5201	451	1705	33,303.61	2,010
MOABU	ACTUALS	5301	451	1705	159,645.00	2,010
MOABU	ACTUALS	3808	441	7005	1,968.44	2,010
MOABU	ACTUALS	3841	441	7005	2,761.95	2,010
MOABU	ACTUALS	5302	441	7005	55,239.01	2,010
MOABU	ACTUALS	3101	441	7006	43,416.74	2,010
MOABU	ACTUALS	3808	441	7006	2,791.94	2,010
MOABU	ACTUALS	3814	441	7006	30,760.14	2,010
MOABU	ACTUALS	3841	441	7006	4,831.81	2,010
MOABU	ACTUALS	5201	441	7006	13,308.00	2,010
MOABU	ACTUALS	5302	441	7006	48,495.05	2,010
MOABU	ACTUALS	3101	441	7007	586,379.44	2,010
MOABU	ACTUALS	3106	441	7007	330.00	2,010
MOABU	ACTUALS	3802	441	7007	718.10	2,010
MOABU	ACTUALS	3803	441	7007	398.47	2,010
MOABU	ACTUALS	3804	441	7007	344.00	2,010
MOABU	ACTUALS	3808	441	7007	340,454.95	2,010
MOABU	ACTUALS	3814	441	7007	47,025.15	2,010
MOABU	ACTUALS	3841	441	7007	246,647.82	2,010
MOABU	ACTUALS	5302	441	7007	6,275,685.63	2,010
MOABU	ACTUALS	5401	441	7007	15,846.78	2,010
MOABU	ACTUALS	5412	441	7007	0.00	2,010
MOABU	ACTUALS	1101	441	7008	51,381.45	2,010
MOABU	ACTUALS	1301	441	7008	5,091.27	2,010
MOABU	ACTUALS	1401	441	7008	25,788.74	2,010
MOABU	ACTUALS	2201	441	7008	266.55	2,010
MOABU	ACTUALS	3101	441	7008	2,884,479.13	2,010
MOABU	ACTUALS	3104	441	7008	130,975.56	2,010
MOABU	ACTUALS	3106	441	7008	1,145,730.00	2,010
MOABU	ACTUALS	3107	441	7008	1,736.00	2,010
MOABU	ACTUALS	3201	441	7008	242.31	2,010
MOABU	ACTUALS	3501	441	7008	30,523.41	2,010
MOABU	ACTUALS	3802	441	7008	1,201.17	2,010
MOABU	ACTUALS	3803	441	7008	2,109.24	2,010
MOABU	ACTUALS	3804	441	7008	142.00	2,010
MOABU	ACTUALS	3805	441	7008	484.00	2,010
MOABU	ACTUALS	3808	441	7008	1,077,323.92	2,010
MOABU	ACTUALS	3814	441	7008	103,737.75	2,010
MOABU	ACTUALS	3815	441	7008	26,195.04	2,010
MOABU	ACTUALS	3828	441	7008	2,170.00	2,010
MOABU	ACTUALS	3841	441	7008	474,252.17	2,010
MOABU	ACTUALS	5302	441	7008	4,764,942.31	2,010
MOABU	ACTUALS	5411	441	7008	0.00	2,010
MOABU	ACTUALS	5605	441	7008	6,995.21	2,010
MOABU	ACTUALS	1101	441	7009	16,152.00	2,010
MOABU	ACTUALS	1201	441	7009	763.30	2,010
MOABU	ACTUALS	1301	441	7009	1,366.85	2,010
MOABU	ACTUALS	1401	441	7009	8,622.33	2,010

2010 All Expend and Revenues

MOABU	ACTUALS	1501	441	7009	90.86	2,010
MOABU	ACTUALS	2101	441	7009	674.29	2,010
MOABU	ACTUALS	2201	441	7009	282.55	2,010
MOABU	ACTUALS	2205	441	7009	17.39	2,010
MOABU	ACTUALS	2206	441	7009	131.52	2,010
MOABU	ACTUALS	2208	441	7009	1,635.61	2,010
MOABU	ACTUALS	2211	441	7009	150.25	2,010
MOABU	ACTUALS	2301	441	7009	4,766.41	2,010
MOABU	ACTUALS	3101	441	7009	1,303,379.11	2,010
MOABU	ACTUALS	3106	441	7009	85,037.00	2,010
MOABU	ACTUALS	3107	441	7009	3,820.00	2,010
MOABU	ACTUALS	3302	441	7009	0.00	2,010
MOABU	ACTUALS	3303	441	7009	43.55	2,010
MOABU	ACTUALS	3334	441	7009	932.81	2,010
MOABU	ACTUALS	3335	441	7009	113.72	2,010
MOABU	ACTUALS	3336	441	7009	433.44	2,010
MOABU	ACTUALS	3337	441	7009	336.00	2,010
MOABU	ACTUALS	3601	441	7009	9,748.42	2,010
MOABU	ACTUALS	3701	441	7009	1,642.00	2,010
MOABU	ACTUALS	3702	441	7009	8,634.00	2,010
MOABU	ACTUALS	3802	441	7009	1,341.28	2,010
MOABU	ACTUALS	3803	441	7009	3,728.27	2,010
MOABU	ACTUALS	3805	441	7009	3,051.00	2,010
MOABU	ACTUALS	3808	441	7009	-586,945.44	2,010
MOABU	ACTUALS	3814	441	7009	232,827.09	2,010
MOABU	ACTUALS	3828	441	7009	5,371.00	2,010
MOABU	ACTUALS	3841	441	7009	-2,268,499.44	2,010
MOABU	ACTUALS	5302	441	7009	6,589,167.13	2,010
MOABU	ACTUALS	5401	441	7009	11,001.17	2,010
MOABU	ACTUALS	5603	441	7009	707.88	2,010
MOABU	ACTUALS	5609	441	7009	3,879.94	2,010
MOABU	ACTUALS	2201	441	7010	1,570.00	2,010
MOABU	ACTUALS	3101	441	7010	238,133.73	2,010
MOABU	ACTUALS	3802	441	7010	222.44	2,010
MOABU	ACTUALS	3803	441	7010	235.31	2,010
MOABU	ACTUALS	3808	441	7010	464,725.38	2,010
MOABU	ACTUALS	3814	441	7010	12,000.00	2,010
MOABU	ACTUALS	3841	441	7010	339,790.68	2,010
MOABU	ACTUALS	5202	441	7010	1,410.00	2,010
MOABU	ACTUALS	5302	441	7010	5,701,253.30	2,010
MOABU	ACTUALS	5401	441	7010	0.00	2,010
MOABU	ACTUALS	5302	419	7190	533,022.59	2,010
MOABU	ACTUALS	3841	419	7192	6.44	2,010
MOABU	ACTUALS	5302	419	7192	0.00	2,010
MOABU	ACTUALS	3101	419	7197	18,000.00	2,010
MOABU	ACTUALS	3808	419	7197	10,396.00	2,010
MOABU	ACTUALS	3101	419	7199	15,000.00	2,010
MOABU	ACTUALS	5302	419	7199	1,212,989.96	2,010
MOABU	ACTUALS	3101	461	7202	-19,167.00	2,010
MOABU	ACTUALS	3803	461	7202	-352.04	2,010
MOABU	ACTUALS	5302	461	7202	20,108.00	2,010
MOABU	ACTUALS	3101	241	7247G	16,909.83	2,010
MOABU	ACTUALS	3814	241	7247G	18,142.32	2,010
MOABU	ACTUALS	3101	441	7251	24,822.50	2,010
MOABU	ACTUALS	3612	441	7251	0.00	2,010

2010 All Expend and Revenues

MOABU	ACTUALS	3808	441	7251	113,218.55	2,010
MOABU	ACTUALS	3814	441	7251	6,000.00	2,010
MOABU	ACTUALS	3841	441	7251	3,132.26	2,010
MOABU	ACTUALS	5412	441	7251	4,112.00	2,010
MOABU	ACTUALS	3101	441	7252	238,053.14	2,010
MOABU	ACTUALS	3804	441	7252	-20.00	2,010
MOABU	ACTUALS	5302	441	7252	-450.00	2,010
MOABU	ACTUALS	2201	441	7253	1,298.47	2,010
MOABU	ACTUALS	3101	441	7253	2,411,350.52	2,010
MOABU	ACTUALS	3104	441	7253	-99,158.62	2,010
MOABU	ACTUALS	3106	441	7253	391,565.00	2,010
MOABU	ACTUALS	3107	441	7253	4,235.54	2,010
MOABU	ACTUALS	3802	441	7253	1,427.60	2,010
MOABU	ACTUALS	3803	441	7253	7,460.25	2,010
MOABU	ACTUALS	3804	441	7253	150.00	2,010
MOABU	ACTUALS	3808	441	7253	859,719.25	2,010
MOABU	ACTUALS	3814	441	7253	769,980.04	2,010
MOABU	ACTUALS	3841	441	7253	1,058,202.90	2,010
MOABU	ACTUALS	5302	441	7253	17,634,007.64	2,010
MOABU	ACTUALS	3101	409	7262	1,823,087.13	2,010
MOABU	ACTUALS	3106	409	7262	3,753.00	2,010
MOABU	ACTUALS	3107	409	7262	2,250.00	2,010
MOABU	ACTUALS	3802	409	7262	464.80	2,010
MOABU	ACTUALS	3803	409	7262	3,295.04	2,010
MOABU	ACTUALS	3808	409	7262	358,568.21	2,010
MOABU	ACTUALS	3814	409	7262	33,444.30	2,010
MOABU	ACTUALS	3815	409	7262	517.00	2,010
MOABU	ACTUALS	3841	409	7262	111,888.44	2,010
MOABU	ACTUALS	5302	409	7262	1,784,466.62	2,010
MOABU	ACTUALS	3101	406	7264	31,304.36	2,010
MOABU	ACTUALS	3106	406	7264	0.00	2,010
MOABU	ACTUALS	3808	406	7264	0.00	2,010
MOABU	ACTUALS	3101	420	7265	389,854.79	2,010
MOABU	ACTUALS	3808	420	7265	30,000.00	2,010
MOABU	ACTUALS	3841	420	7265	10,530.26	2,010
MOABU	ACTUALS	1101	409	7269	51,438.35	2,010
MOABU	ACTUALS	1201	409	7269	11,486.14	2,010
MOABU	ACTUALS	1301	409	7269	5,244.97	2,010
MOABU	ACTUALS	1401	409	7269	23,869.88	2,010
MOABU	ACTUALS	1501	409	7269	100.00	2,010
MOABU	ACTUALS	2301	409	7269	9,950.24	2,010
MOABU	ACTUALS	3303	409	7269	409.32	2,010
MOABU	ACTUALS	3702	409	7269	30,800.00	2,010
MOABU	ACTUALS	3808	409	7269	4,088.00	2,010
MOABU	ACTUALS	3841	409	7271	1,935.50	2,010
MOABU	ACTUALS	5302	409	7271	1.93	2,010
MOABU	ACTUALS	1101	231	7271G	103,790.54	2,010
MOABU	ACTUALS	1301	231	7271G	9,178.62	2,010
MOABU	ACTUALS	1401	231	7271G	52,576.96	2,010
MOABU	ACTUALS	2201	231	7271G	71.91	2,010
MOABU	ACTUALS	3101	231	7271G	8,241.31	2,010
MOABU	ACTUALS	3814	231	7271G	0.00	2,010
MOABU	ACTUALS	3101	231	72713G	16,199.25	2,010
MOABU	ACTUALS	1101	231	72756G	27,856.68	2,010
MOABU	ACTUALS	1301	231	72756G	2,364.80	2,010

2010 All Expend and Revenues

MOABU	ACTUALS	1401	231	72756G	16,132.97	2,010
MOABU	ACTUALS	3101	231	72756G	83,206.78	2,010
MOABU	ACTUALS	3101	401	7276	477,109.30	2,010
MOABU	ACTUALS	3804	401	7276	102.00	2,010
MOABU	ACTUALS	3808	401	7276	31,194.53	2,010
MOABU	ACTUALS	3814	401	7276	975.00	2,010
MOABU	ACTUALS	3819	401	7276	2,110.55	2,010
MOABU	ACTUALS	3828	401	7276	150.00	2,010
MOABU	ACTUALS	3841	401	7276	1,187.09	2,010
MOABU	ACTUALS	5302	401	7276	83,102.68	2,010
MOABU	ACTUALS	5607	401	7276	29,879.50	2,010
MOABU	ACTUALS	3101	441	7278	0.00	2,010
MOABU	ACTUALS	5201	441	7278	-13,308.00	2,010
MOABU	ACTUALS	3101	461	7281	133,882.35	2,010
MOABU	ACTUALS	3841	461	7281	2,718.59	2,010
MOABU	ACTUALS	5302	420	7286	39,000.00	2,010
MOABU	ACTUALS	3808	406	7306	0.00	2,010
MOABU	ACTUALS	5302	406	7306	16,865.00	2,010
MOABU	ACTUALS	1101	101	7310	182,002.66	2,010
MOABU	ACTUALS	1201	101	7310	748.25	2,010
MOABU	ACTUALS	1301	101	7310	14,019.60	2,010
MOABU	ACTUALS	1401	101	7310	118,772.25	2,010
MOABU	ACTUALS	2101	101	7310	6,442.02	2,010
MOABU	ACTUALS	2201	101	7310	5,122.59	2,010
MOABU	ACTUALS	2202	101	7310	705.20	2,010
MOABU	ACTUALS	2208	101	7310	157.03	2,010
MOABU	ACTUALS	3101	101	7310	122.05	2,010
MOABU	ACTUALS	3201	101	7310	1,144.98	2,010
MOABU	ACTUALS	3202	101	7310	11.95	2,010
MOABU	ACTUALS	3203	101	7310	11,004.25	2,010
MOABU	ACTUALS	3601	101	7310	1,703.29	2,010
MOABU	ACTUALS	3702	101	7310	5,641.00	2,010
MOABU	ACTUALS	3805	101	7310	1,057.64	2,010
MOABU	ACTUALS	3814	101	7310	1,697.59	2,010
MOABU	ACTUALS	3822	101	7310	13.08	2,010
MOABU	ACTUALS	3828	101	7310	760.00	2,010
MOABU	ACTUALS	5603	101	7310	169.98	2,010
MOABU	ACTUALS	1101	101	7320	463,099.88	2,010
MOABU	ACTUALS	1201	101	7320	500.12	2,010
MOABU	ACTUALS	1301	101	7320	42,399.34	2,010
MOABU	ACTUALS	1401	101	7320	240,160.24	2,010
MOABU	ACTUALS	2201	101	7320	28.95	2,010
MOABU	ACTUALS	2208	101	7320	508.61	2,010
MOABU	ACTUALS	3201	101	7320	54.98	2,010
MOABU	ACTUALS	3612	101	7320	5,195.00	2,010
MOABU	ACTUALS	3702	101	7320	4,332.00	2,010
MOABU	ACTUALS	3808	101	7320	49.50	2,010
MOABU	ACTUALS	1101	101	7321	190,569.19	2,010
MOABU	ACTUALS	1201	101	7321	49,565.54	2,010
MOABU	ACTUALS	1301	101	7321	23,327.46	2,010
MOABU	ACTUALS	1401	101	7321	87,928.91	2,010
MOABU	ACTUALS	1501	101	7321	6,313.63	2,010
MOABU	ACTUALS	2101	101	7321	5.63	2,010
MOABU	ACTUALS	2201	101	7321	582.39	2,010
MOABU	ACTUALS	2208	101	7321	2,443.29	2,010

2010 All Expend and Revenues

MOABU	ACTUALS	3105	101	7321	72.25	2,010
MOABU	ACTUALS	3201	101	7321	5.03	2,010
MOABU	ACTUALS	3601	101	7321	2,289.59	2,010
MOABU	ACTUALS	3702	101	7321	16,044.00	2,010
MOABU	ACTUALS	3814	101	7321	4,105.00	2,010
MOABU	ACTUALS	3822	101	7321	13.32	2,010
MOABU	ACTUALS	5603	101	7321	425.28	2,010
MOABU	ACTUALS	1101	101	7322	99,322.92	2,010
MOABU	ACTUALS	1301	101	7322	76,523.58	2,010
MOABU	ACTUALS	1401	101	7322	56,092.41	2,010
MOABU	ACTUALS	3101	101	7322	39,590.75	2,010
MOABU	ACTUALS	3201	101	7322	1.16	2,010
MOABU	ACTUALS	3803	101	7322	325.00	2,010
MOABU	ACTUALS	3822	101	7322	83.09	2,010
MOABU	ACTUALS	1101	101	7323	104,568.05	2,010
MOABU	ACTUALS	1301	101	7323	18,629.37	2,010
MOABU	ACTUALS	1401	101	7323	74,242.05	2,010
MOABU	ACTUALS	3101	101	7323	81.00	2,010
MOABU	ACTUALS	3201	101	7323	4.42	2,010
MOABU	ACTUALS	3805	101	7323	115.00	2,010
MOABU	ACTUALS	1101	101	7324	548,490.69	2,010
MOABU	ACTUALS	1301	101	7324	59,830.59	2,010
MOABU	ACTUALS	1401	101	7324	296,150.66	2,010
MOABU	ACTUALS	2201	101	7324	1,151.72	2,010
MOABU	ACTUALS	2203	101	7324	50.77	2,010
MOABU	ACTUALS	2208	101	7324	3,664.19	2,010
MOABU	ACTUALS	2211	101	7324	205.26	2,010
MOABU	ACTUALS	3101	101	7324	356,920.75	2,010
MOABU	ACTUALS	3105	101	7324	40.00	2,010
MOABU	ACTUALS	3111	101	7324	786.00	2,010
MOABU	ACTUALS	3201	101	7324	118.01	2,010
MOABU	ACTUALS	3601	101	7324	390.01	2,010
MOABU	ACTUALS	3612	101	7324	5,300.00	2,010
MOABU	ACTUALS	3702	101	7324	20,260.00	2,010
MOABU	ACTUALS	3802	101	7324	326.63	2,010
MOABU	ACTUALS	3804	101	7324	20.00	2,010
MOABU	ACTUALS	3805	101	7324	3,300.00	2,010
MOABU	ACTUALS	3808	101	7324	1,172.56	2,010
MOABU	ACTUALS	3814	101	7324	4,120.21	2,010
MOABU	ACTUALS	3822	101	7324	2,573.03	2,010
MOABU	ACTUALS	3828	101	7324	1,349.00	2,010
MOABU	ACTUALS	5302	101	7324	450.00	2,010
MOABU	ACTUALS	5412	101	7324	20,128.22	2,010
MOABU	ACTUALS	5603	101	7324	1,540.00	2,010
MOABU	ACTUALS	5605	101	7324	139.99	2,010
MOABU	ACTUALS	3601	101	7325	24,960.00	2,010
MOABU	ACTUALS	1101	101	7326	96,616.86	2,010
MOABU	ACTUALS	1201	101	7326	190.02	2,010
MOABU	ACTUALS	1301	101	7326	33,127.88	2,010
MOABU	ACTUALS	1401	101	7326	54,160.77	2,010
MOABU	ACTUALS	1501	101	7326	902.60	2,010
MOABU	ACTUALS	1101	101	7331	236,846.48	2,010
MOABU	ACTUALS	1201	101	7331	2,675.51	2,010
MOABU	ACTUALS	1301	101	7331	19,079.25	2,010
MOABU	ACTUALS	1401	101	7331	132,707.75	2,010

2010 All Expend and Revenues

MOABU	ACTUALS	1501	101	7331	596.57	2,010
MOABU	ACTUALS	2101	101	7331	432.53	2,010
MOABU	ACTUALS	2201	101	7331	892.98	2,010
MOABU	ACTUALS	2208	101	7331	765.99	2,010
MOABU	ACTUALS	3201	101	7331	24.54	2,010
MOABU	ACTUALS	3601	101	7331	5,453.00	2,010
MOABU	ACTUALS	3612	101	7331	1,800.00	2,010
MOABU	ACTUALS	3702	101	7331	8,634.00	2,010
MOABU	ACTUALS	3814	101	7331	7,160.00	2,010
MOABU	ACTUALS	5609	101	7331	1,957.39	2,010
MOABU	ACTUALS	1101	101	7340	218,835.92	2,010
MOABU	ACTUALS	1301	101	7340	19,059.54	2,010
MOABU	ACTUALS	1401	101	7340	119,599.68	2,010
MOABU	ACTUALS	2208	101	7340	273.08	2,010
MOABU	ACTUALS	3201	101	7340	22.79	2,010
MOABU	ACTUALS	3702	101	7340	3,971.00	2,010
MOABU	ACTUALS	1101	101	7360	1,285,946.92	2,010
MOABU	ACTUALS	1201	101	7360	108,924.88	2,010
MOABU	ACTUALS	1301	101	7360	175,795.53	2,010
MOABU	ACTUALS	1401	101	7360	701,366.40	2,010
MOABU	ACTUALS	1501	101	7360	22,727.88	2,010
MOABU	ACTUALS	2201	101	7360	122.34	2,010
MOABU	ACTUALS	2208	101	7360	6,989.41	2,010
MOABU	ACTUALS	2211	101	7360	649.30	2,010
MOABU	ACTUALS	3201	101	7360	34.17	2,010
MOABU	ACTUALS	3601	101	7360	2,676.21	2,010
MOABU	ACTUALS	3612	101	7360	3,265.96	2,010
MOABU	ACTUALS	3702	101	7360	35,739.00	2,010
MOABU	ACTUALS	3805	101	7360	1,351.00	2,010
MOABU	ACTUALS	3814	101	7360	103.04	2,010
MOABU	ACTUALS	5609	101	7360	418.00	2,010
MOABU	ACTUALS	1101	101	7390	343,932.94	2,010
MOABU	ACTUALS	1201	101	7390	10,544.73	2,010
MOABU	ACTUALS	1301	101	7390	47,648.29	2,010
MOABU	ACTUALS	1401	101	7390	170,171.63	2,010
MOABU	ACTUALS	1501	101	7390	1,053.15	2,010
MOABU	ACTUALS	2101	101	7390	15.82	2,010
MOABU	ACTUALS	2208	101	7390	34.95	2,010
MOABU	ACTUALS	3101	101	7390	3,900.00	2,010
MOABU	ACTUALS	3106	101	7390	140.00	2,010
MOABU	ACTUALS	3201	101	7390	22.71	2,010
MOABU	ACTUALS	3808	101	7390	40.50	2,010
MOABU	ACTUALS	3822	101	7390	1,128.16	2,010
MOABU	ACTUALS	1101	101	7410	121,914.14	2,010
MOABU	ACTUALS	1301	101	7410	33,934.79	2,010
MOABU	ACTUALS	1401	101	7410	81,158.30	2,010
MOABU	ACTUALS	2101	101	7410	111.95	2,010
MOABU	ACTUALS	2201	101	7410	179.90	2,010
MOABU	ACTUALS	2208	101	7410	1,396.98	2,010
MOABU	ACTUALS	3101	101	7410	2,393.12	2,010
MOABU	ACTUALS	3201	101	7410	0.22	2,010
MOABU	ACTUALS	3203	101	7410	140.37	2,010
MOABU	ACTUALS	3601	101	7410	480.00	2,010
MOABU	ACTUALS	3702	101	7410	8,628.00	2,010
MOABU	ACTUALS	3805	101	7410	254.40	2,010

2010 All Expend and Revenues

MOABU	ACTUALS	3808	101	7410	15,325.00	2,010
MOABU	ACTUALS	3814	101	7410	2,821.50	2,010
MOABU	ACTUALS	5603	101	7410	667.93	2,010
MOABU	ACTUALS	5604	101	7410	196.01	2,010
MOABU	ACTUALS	1101	101	7429	373,345.62	2,010
MOABU	ACTUALS	1201	101	7429	841.85	2,010
MOABU	ACTUALS	1301	101	7429	49,566.49	2,010
MOABU	ACTUALS	1401	101	7429	232,378.64	2,010
MOABU	ACTUALS	2101	101	7429	581.29	2,010
MOABU	ACTUALS	2201	101	7429	0.00	2,010
MOABU	ACTUALS	3105	101	7429	72.25	2,010
MOABU	ACTUALS	3201	101	7429	49.98	2,010
MOABU	ACTUALS	3302	101	7429	14.00	2,010
MOABU	ACTUALS	3304	101	7429	1,314.00	2,010
MOABU	ACTUALS	3808	101	7429	1,463.00	2,010
MOABU	ACTUALS	1101	141	7430	6,035,115.21	2,010
MOABU	ACTUALS	1201	141	7430	584,471.52	2,010
MOABU	ACTUALS	1301	141	7430	737,288.50	2,010
MOABU	ACTUALS	1401	141	7430	3,093,057.84	2,010
MOABU	ACTUALS	1501	141	7430	100,371.64	2,010
MOABU	ACTUALS	2101	141	7430	9,712.96	2,010
MOABU	ACTUALS	2201	141	7430	323,757.94	2,010
MOABU	ACTUALS	2202	141	7430	20,196.89	2,010
MOABU	ACTUALS	2203	141	7430	10.00	2,010
MOABU	ACTUALS	2205	141	7430	6,451.86	2,010
MOABU	ACTUALS	2208	141	7430	73,501.11	2,010
MOABU	ACTUALS	2209	141	7430	1,019,716.09	2,010
MOABU	ACTUALS	2210	141	7430	23,957.20	2,010
MOABU	ACTUALS	2211	141	7430	3,454.30	2,010
MOABU	ACTUALS	2301	141	7430	942,280.58	2,010
MOABU	ACTUALS	3101	141	7430	50,600.97	2,010
MOABU	ACTUALS	3105	141	7430	1,078.75	2,010
MOABU	ACTUALS	3111	141	7430	150.00	2,010
MOABU	ACTUALS	3156	141	7430	5,716.73	2,010
MOABU	ACTUALS	3201	141	7430	20,629.17	2,010
MOABU	ACTUALS	3203	141	7430	5,911.01	2,010
MOABU	ACTUALS	3303	141	7430	4,235.25	2,010
MOABU	ACTUALS	3501	141	7430	92,182.58	2,010
MOABU	ACTUALS	3601	141	7430	323,031.59	2,010
MOABU	ACTUALS	3604	141	7430	199.41	2,010
MOABU	ACTUALS	3612	141	7430	7,296.30	2,010
MOABU	ACTUALS	3701	141	7430	57,497.35	2,010
MOABU	ACTUALS	3702	141	7430	5,514,860.00	2,010
MOABU	ACTUALS	3712	141	7430	838.24	2,010
MOABU	ACTUALS	3802	141	7430	444.88	2,010
MOABU	ACTUALS	3803	141	7430	2,672.68	2,010
MOABU	ACTUALS	3805	141	7430	580.00	2,010
MOABU	ACTUALS	3807	141	7430	20,610.12	2,010
MOABU	ACTUALS	3808	141	7430	1,109,741.56	2,010
MOABU	ACTUALS	3814	141	7430	19,656.02	2,010
MOABU	ACTUALS	3828	141	7430	4,690.00	2,010
MOABU	ACTUALS	3861	141	7430	594.00	2,010
MOABU	ACTUALS	3901	141	7430	12,663.54	2,010
MOABU	ACTUALS	5404	141	7430	11,989.40	2,010
MOABU	ACTUALS	5411	141	7430	32,311.75	2,010

2010 All Expend and Revenues

MOABU	ACTUALS	5412	141	7430	3,350.00	2,010
MOABU	ACTUALS	5603	141	7430	6,683.99	2,010
MOABU	ACTUALS	5604	141	7430	1,021.96	2,010
MOABU	ACTUALS	5609	141	7430	3,222.00	2,010
MOABU	ACTUALS	3501	148	7431	526.36	2,010
MOABU	ACTUALS	3808	148	7431	37,194.69	2,010
MOABU	ACTUALS	3901	121	7432	111,586.00	2,010
MOABU	ACTUALS	3601	142	7433	135,981.59	2,010
MOABU	ACTUALS	3808	142	7433	20,978.01	2,010
MOABU	ACTUALS	3701	143	7434	80.00	2,010
MOABU	ACTUALS	3808	143	7434	587,335.02	2,010
MOABU	ACTUALS	3814	143	7434	270.16	2,010
MOABU	ACTUALS	3808	144	7435	49,067.46	2,010
MOABU	ACTUALS	3808	145	7436	68,229.99	2,010
MOABU	ACTUALS	3808	146	7437	3,111.38	2,010
MOABU	ACTUALS	3808	147	7438	5,055.12	2,010
MOABU	ACTUALS	3901	122	7439	2,223.00	2,010
MOABU	ACTUALS	3101	149	7440	39,060.00	2,010
MOABU	ACTUALS	3501	149	7440	2,340.55	2,010
MOABU	ACTUALS	3601	149	7440	107,872.01	2,010
MOABU	ACTUALS	3701	149	7440	80.00	2,010
MOABU	ACTUALS	3802	149	7440	49.63	2,010
MOABU	ACTUALS	3803	149	7440	471.96	2,010
MOABU	ACTUALS	3808	149	7440	334,388.11	2,010
MOABU	ACTUALS	5302	149	7440	0.00	2,010
MOABU	ACTUALS	2301	111	7441	12,804.00	2,010
MOABU	ACTUALS	3808	111	7441	247,722.74	2,010
MOABU	ACTUALS	3808	112	7442	152,394.71	2,010
MOABU	ACTUALS	3803	113	7443	176.48	2,010
MOABU	ACTUALS	3808	113	7443	44,380.78	2,010
MOABU	ACTUALS	3808	114	7444	24,365.90	2,010
MOABU	ACTUALS	3808	115	7445	5,990.97	2,010
MOABU	ACTUALS	3808	116	7446	9,703.16	2,010
MOABU	ACTUALS	3808	117	7447	24,573.12	2,010
MOABU	ACTUALS	2301	118	7448	9,047.52	2,010
MOABU	ACTUALS	3802	118	7448	502.50	2,010
MOABU	ACTUALS	3808	118	7448	128,173.18	2,010
MOABU	ACTUALS	1101	119	7449	265,831.44	2,010
MOABU	ACTUALS	1201	119	7449	25,643.80	2,010
MOABU	ACTUALS	1301	119	7449	42,652.81	2,010
MOABU	ACTUALS	1401	119	7449	152,658.25	2,010
MOABU	ACTUALS	1501	119	7449	141.98	2,010
MOABU	ACTUALS	2101	119	7449	1,770.41	2,010
MOABU	ACTUALS	2201	119	7449	636.12	2,010
MOABU	ACTUALS	2202	119	7449	47.78	2,010
MOABU	ACTUALS	2205	119	7449	105.37	2,010
MOABU	ACTUALS	2208	119	7449	1,220.20	2,010
MOABU	ACTUALS	2209	119	7449	13,604.11	2,010
MOABU	ACTUALS	2301	119	7449	173,435.32	2,010
MOABU	ACTUALS	3101	119	7449	665.00	2,010
MOABU	ACTUALS	3105	119	7449	72.25	2,010
MOABU	ACTUALS	3201	119	7449	4,963.83	2,010
MOABU	ACTUALS	3203	119	7449	726.03	2,010
MOABU	ACTUALS	3501	119	7449	29,857.00	2,010
MOABU	ACTUALS	3601	119	7449	43,858.80	2,010

2010 All Expend and Revenues

MOABU	ACTUALS	3612	119	7449	295.00	2,010
MOABU	ACTUALS	3702	119	7449	55,074.00	2,010
MOABU	ACTUALS	3801	119	7449	26.25	2,010
MOABU	ACTUALS	3802	119	7449	1,825.45	2,010
MOABU	ACTUALS	3805	119	7449	30.00	2,010
MOABU	ACTUALS	3808	119	7449	2,334,191.87	2,010
MOABU	ACTUALS	3814	119	7449	593.04	2,010
MOABU	ACTUALS	5403	119	7449	1,260.00	2,010
MOABU	ACTUALS	5602	119	7449	2,097.00	2,010
MOABU	ACTUALS	5603	119	7449	1,685.94	2,010
MOABU	ACTUALS	3501	105	7450	4,766.22	2,010
MOABU	ACTUALS	3611	105	7450	100.00	2,010
MOABU	ACTUALS	3802	105	7450	326.63	2,010
MOABU	ACTUALS	3803	105	7450	50.00	2,010
MOABU	ACTUALS	3808	105	7450	211,005.61	2,010
MOABU	ACTUALS	3901	105	7450	40,000.00	2,010
MOABU	ACTUALS	3501	123	7451	210.72	2,010
MOABU	ACTUALS	3808	123	7451	39,238.81	2,010
MOABU	ACTUALS	3802	124	7452	49.63	2,010
MOABU	ACTUALS	3808	124	7452	17,863.30	2,010
MOABU	ACTUALS	3808	125	7453	3,204.60	2,010
MOABU	ACTUALS	3808	409	7454	111,650.00	2,010
MOABU	ACTUALS	3808	126	7456	41,050.47	2,010
MOABU	ACTUALS	3814	126	7456	140.00	2,010
MOABU	ACTUALS	2101	106	7460	505.13	2,010
MOABU	ACTUALS	2301	106	7460	18,872.00	2,010
MOABU	ACTUALS	3101	106	7460	2,000.00	2,010
MOABU	ACTUALS	3201	106	7460	929.29	2,010
MOABU	ACTUALS	3501	106	7460	23,086.62	2,010
MOABU	ACTUALS	3601	106	7460	6,047.62	2,010
MOABU	ACTUALS	3701	106	7460	0.00	2,010
MOABU	ACTUALS	3802	106	7460	4,820.80	2,010
MOABU	ACTUALS	3808	106	7460	552,204.60	2,010
MOABU	ACTUALS	3814	106	7460	600.00	2,010
MOABU	ACTUALS	1101	141	7470	24,654.96	2,010
MOABU	ACTUALS	1301	141	7470	22,325.47	2,010
MOABU	ACTUALS	1401	141	7470	15,032.37	2,010
MOABU	ACTUALS	2201	141	7470	78.19	2,010
MOABU	ACTUALS	2208	141	7470	371.60	2,010
MOABU	ACTUALS	2301	141	7470	3,025.00	2,010
MOABU	ACTUALS	3101	141	7470	205.00	2,010
MOABU	ACTUALS	3201	141	7470	38.50	2,010
MOABU	ACTUALS	3203	141	7470	27.50	2,010
MOABU	ACTUALS	3303	141	7470	13.98	2,010
MOABU	ACTUALS	3501	141	7470	3,537,502.96	2,010
MOABU	ACTUALS	3601	141	7470	720,791.54	2,010
MOABU	ACTUALS	3612	141	7470	194.00	2,010
MOABU	ACTUALS	3701	141	7470	1,916.00	2,010
MOABU	ACTUALS	3702	141	7470	6,264.00	2,010
MOABU	ACTUALS	3808	141	7470	2,079.00	2,010
MOABU	ACTUALS	3814	141	7470	212.40	2,010
MOABU	ACTUALS	3819	141	7470	51,809.87	2,010
MOABU	ACTUALS	3501	129	7472	114,942.63	2,010
MOABU	ACTUALS	3601	129	7472	95,775.10	2,010
MOABU	ACTUALS	3901	119	7473	3,316,948.00	2,010

2010 All Expend and Revenues

MOABU	ACTUALS	1101	101	7510	169,280.88	2,010
MOABU	ACTUALS	1201	101	7510	2,984.17	2,010
MOABU	ACTUALS	1301	101	7510	27,334.90	2,010
MOABU	ACTUALS	1401	101	7510	99,506.77	2,010
MOABU	ACTUALS	1501	101	7510	162.84	2,010
MOABU	ACTUALS	2101	101	7510	724.07	2,010
MOABU	ACTUALS	2201	101	7510	69.98	2,010
MOABU	ACTUALS	2301	101	7510	140.00	2,010
MOABU	ACTUALS	3101	101	7510	27,836.10	2,010
MOABU	ACTUALS	3201	101	7510	32.71	2,010
MOABU	ACTUALS	3203	101	7510	896.00	2,010
MOABU	ACTUALS	3302	101	7510	386.50	2,010
MOABU	ACTUALS	3601	101	7510	1,013.53	2,010
MOABU	ACTUALS	3612	101	7510	0.00	2,010
MOABU	ACTUALS	3805	101	7510	768.92	2,010
MOABU	ACTUALS	3808	101	7510	1,618.60	2,010
MOABU	ACTUALS	3814	101	7510	899.00	2,010
MOABU	ACTUALS	3823	101	7510	60.00	2,010
MOABU	ACTUALS	1101	101	7520	506,528.35	2,010
MOABU	ACTUALS	1201	101	7520	5,428.25	2,010
MOABU	ACTUALS	1301	101	7520	51,896.31	2,010
MOABU	ACTUALS	1401	101	7520	302,915.11	2,010
MOABU	ACTUALS	1501	101	7520	596.37	2,010
MOABU	ACTUALS	2101	101	7520	2,760.92	2,010
MOABU	ACTUALS	2201	101	7520	597.84	2,010
MOABU	ACTUALS	2208	101	7520	6,098.17	2,010
MOABU	ACTUALS	2211	101	7520	232.97	2,010
MOABU	ACTUALS	2301	101	7520	16.60	2,010
MOABU	ACTUALS	3201	101	7520	1,266.50	2,010
MOABU	ACTUALS	3203	101	7520	4,796.24	2,010
MOABU	ACTUALS	3702	101	7520	34,584.00	2,010
MOABU	ACTUALS	3802	101	7520	1,380.91	2,010
MOABU	ACTUALS	3803	101	7520	110.50	2,010
MOABU	ACTUALS	3804	101	7520	885.04	2,010
MOABU	ACTUALS	3808	101	7520	498.59	2,010
MOABU	ACTUALS	3814	101	7520	538.42	2,010
MOABU	ACTUALS	3822	101	7520	893.72	2,010
MOABU	ACTUALS	3823	101	7520	168.13	2,010
MOABU	ACTUALS	3838	101	7520	1,040.00	2,010
MOABU	ACTUALS	1101	181	7530	1,571,819.48	2,010
MOABU	ACTUALS	1201	181	7530	64,225.07	2,010
MOABU	ACTUALS	1301	181	7530	214,902.53	2,010
MOABU	ACTUALS	1401	181	7530	816,727.20	2,010
MOABU	ACTUALS	1501	181	7530	1,048.76	2,010
MOABU	ACTUALS	2101	181	7530	7,061.14	2,010
MOABU	ACTUALS	2201	181	7530	4,928.86	2,010
MOABU	ACTUALS	2208	181	7530	28,599.87	2,010
MOABU	ACTUALS	3101	181	7530	29,612.71	2,010
MOABU	ACTUALS	3105	181	7530	40.00	2,010
MOABU	ACTUALS	3201	181	7530	259.26	2,010
MOABU	ACTUALS	3203	181	7530	1,904.29	2,010
MOABU	ACTUALS	3302	181	7530	23.00	2,010
MOABU	ACTUALS	3303	181	7530	26.00	2,010
MOABU	ACTUALS	3601	181	7530	2,342.13	2,010
MOABU	ACTUALS	3612	181	7530	0.00	2,010

2010 All Expend and Revenues

MOABU	ACTUALS	3702	181	7530	82,092.00	2,010
MOABU	ACTUALS	3805	181	7530	1,480.00	2,010
MOABU	ACTUALS	3814	181	7530	11,580.02	2,010
MOABU	ACTUALS	3822	181	7530	55,380.25	2,010
MOABU	ACTUALS	3828	181	7530	2,052.00	2,010
MOABU	ACTUALS	3838	181	7530	211.00	2,010
MOABU	ACTUALS	3901	181	7530	507,250.00	2,010
MOABU	ACTUALS	1101	181	7540	676,126.92	2,010
MOABU	ACTUALS	1201	181	7540	3,435.93	2,010
MOABU	ACTUALS	1301	181	7540	67,002.21	2,010
MOABU	ACTUALS	1401	181	7540	353,736.54	2,010
MOABU	ACTUALS	1501	181	7540	223.04	2,010
MOABU	ACTUALS	2101	181	7540	1,311.47	2,010
MOABU	ACTUALS	2201	181	7540	58.67	2,010
MOABU	ACTUALS	2211	181	7540	39.98	2,010
MOABU	ACTUALS	2301	181	7540	102.08	2,010
MOABU	ACTUALS	3101	181	7540	22,763.00	2,010
MOABU	ACTUALS	3201	181	7540	64.49	2,010
MOABU	ACTUALS	3203	181	7540	72.60	2,010
MOABU	ACTUALS	3302	181	7540	11.95	2,010
MOABU	ACTUALS	3303	181	7540	154.77	2,010
MOABU	ACTUALS	3601	181	7540	602.97	2,010
MOABU	ACTUALS	3611	181	7540	863.20	2,010
MOABU	ACTUALS	3612	181	7540	99.00	2,010
MOABU	ACTUALS	3805	181	7540	160.00	2,010
MOABU	ACTUALS	3808	181	7540	40.50	2,010
MOABU	ACTUALS	3814	181	7540	654.02	2,010
MOABU	ACTUALS	3822	181	7540	11,717.31	2,010
MOABU	ACTUALS	3828	181	7540	1,252.87	2,010
MOABU	ACTUALS	3838	181	7540	1,202.00	2,010
MOABU	ACTUALS	4105	181	7540	31,422.71	2,010
MOABU	ACTUALS	4106	181	7540	11,557.63	2,010
MOABU	ACTUALS	5411	181	7540	3,261.75	2,010
MOABU	ACTUALS	1101	101	7542	229,808.78	2,010
MOABU	ACTUALS	1201	101	7542	1,142.95	2,010
MOABU	ACTUALS	1301	101	7542	24,651.75	2,010
MOABU	ACTUALS	1401	101	7542	126,489.44	2,010
MOABU	ACTUALS	1501	101	7542	108.78	2,010
MOABU	ACTUALS	2101	101	7542	164.67	2,010
MOABU	ACTUALS	2201	101	7542	43.69	2,010
MOABU	ACTUALS	2208	101	7542	1,061.32	2,010
MOABU	ACTUALS	3201	101	7542	50.30	2,010
MOABU	ACTUALS	3203	101	7542	757.39	2,010
MOABU	ACTUALS	3612	101	7542	0.00	2,010
MOABU	ACTUALS	3702	101	7542	8,628.00	2,010
MOABU	ACTUALS	3802	101	7542	116.20	2,010
MOABU	ACTUALS	3814	101	7542	125.00	2,010
MOABU	ACTUALS	3822	101	7542	7,834.39	2,010
MOABU	ACTUALS	3828	101	7542	948.00	2,010
MOABU	ACTUALS	5604	101	7542	166.72	2,010
MOABU	ACTUALS	1101	101	7543	121,295.91	2,010
MOABU	ACTUALS	1201	101	7543	238.86	2,010
MOABU	ACTUALS	1301	101	7543	24,456.55	2,010
MOABU	ACTUALS	1401	101	7543	73,475.86	2,010
MOABU	ACTUALS	2101	101	7543	83.26	2,010

2010 All Expend and Revenues

MOABU	ACTUALS	2201	101	7543	49.98	2,010
MOABU	ACTUALS	2301	101	7543	16.60	2,010
MOABU	ACTUALS	3201	101	7543	1,251.90	2,010
MOABU	ACTUALS	3808	101	7543	460.34	2,010
MOABU	ACTUALS	3814	101	7543	360.00	2,010
MOABU	ACTUALS	3822	101	7543	2,822.48	2,010
MOABU	ACTUALS	5604	101	7543	15.21	2,010
MOABU	ACTUALS	1101	181	7552	333,966.09	2,010
MOABU	ACTUALS	1201	181	7552	10,387.90	2,010
MOABU	ACTUALS	1301	181	7552	45,222.77	2,010
MOABU	ACTUALS	1401	181	7552	213,261.66	2,010
MOABU	ACTUALS	1501	181	7552	953.86	2,010
MOABU	ACTUALS	2101	181	7552	9,848.48	2,010
MOABU	ACTUALS	2201	181	7552	784.39	2,010
MOABU	ACTUALS	3101	181	7552	1,552.50	2,010
MOABU	ACTUALS	3201	181	7552	86.78	2,010
MOABU	ACTUALS	3203	181	7552	896.00	2,010
MOABU	ACTUALS	3303	181	7552	18.00	2,010
MOABU	ACTUALS	3601	181	7552	2,067.89	2,010
MOABU	ACTUALS	3612	181	7552	0.00	2,010
MOABU	ACTUALS	3801	181	7552	60.57	2,010
MOABU	ACTUALS	3805	181	7552	290.00	2,010
MOABU	ACTUALS	3808	181	7552	4,517.50	2,010
MOABU	ACTUALS	3828	181	7552	199.00	2,010
MOABU	ACTUALS	3838	181	7552	243.00	2,010
MOABU	ACTUALS	1101	101	7560	560,144.18	2,010
MOABU	ACTUALS	1201	101	7560	35,515.56	2,010
MOABU	ACTUALS	1301	101	7560	74,532.04	2,010
MOABU	ACTUALS	1401	101	7560	330,883.92	2,010
MOABU	ACTUALS	1501	101	7560	4,132.25	2,010
MOABU	ACTUALS	2101	101	7560	2,989.89	2,010
MOABU	ACTUALS	2201	101	7560	729.51	2,010
MOABU	ACTUALS	2203	101	7560	16.53	2,010
MOABU	ACTUALS	2206	101	7560	192.50	2,010
MOABU	ACTUALS	2208	101	7560	16,003.04	2,010
MOABU	ACTUALS	2209	101	7560	7,002.11	2,010
MOABU	ACTUALS	2211	101	7560	294.96	2,010
MOABU	ACTUALS	2301	101	7560	16.60	2,010
MOABU	ACTUALS	3201	101	7560	1,246.73	2,010
MOABU	ACTUALS	3202	101	7560	68.41	2,010
MOABU	ACTUALS	3203	101	7560	4,537.26	2,010
MOABU	ACTUALS	3601	101	7560	4,985.00	2,010
MOABU	ACTUALS	3612	101	7560	1,764.00	2,010
MOABU	ACTUALS	3702	101	7560	69,312.00	2,010
MOABU	ACTUALS	3804	101	7560	268.77	2,010
MOABU	ACTUALS	3805	101	7560	511.50	2,010
MOABU	ACTUALS	3808	101	7560	404.82	2,010
MOABU	ACTUALS	3822	101	7560	4,364.37	2,010
MOABU	ACTUALS	5411	101	7560	347.89	2,010
MOABU	ACTUALS	5604	101	7560	60.84	2,010
MOABU	ACTUALS	1101	181	7570	243,044.80	2,010
MOABU	ACTUALS	1201	181	7570	2,651.79	2,010
MOABU	ACTUALS	1301	181	7570	26,693.17	2,010
MOABU	ACTUALS	1401	181	7570	115,850.96	2,010
MOABU	ACTUALS	1501	181	7570	65.57	2,010

2010 All Expend and Revenues

MOABU	ACTUALS	2101	181	7570	228.50	2,010
MOABU	ACTUALS	2201	181	7570	87.98	2,010
MOABU	ACTUALS	2208	181	7570	2,503.02	2,010
MOABU	ACTUALS	2301	181	7570	1,935.35	2,010
MOABU	ACTUALS	3201	181	7570	39.58	2,010
MOABU	ACTUALS	3203	181	7570	1,046.64	2,010
MOABU	ACTUALS	3702	181	7570	12,960.00	2,010
MOABU	ACTUALS	3804	181	7570	180.00	2,010
MOABU	ACTUALS	3808	181	7570	2,475.00	2,010
MOABU	ACTUALS	3822	181	7570	518.35	2,010
MOABU	ACTUALS	3101	401	7591	78,093.75	2,010
MOABU	ACTUALS	3111	401	7591	750.00	2,010
MOABU	ACTUALS	3814	401	7591	500.00	2,010
MOABU	ACTUALS	5411	401	7591	21,105.15	2,010
MOABU	ACTUALS	5604	401	7591	4,616.29	2,010
MOABU	ACTUALS	3802	441	7655	232.40	2,010
MOABU	ACTUALS	3803	441	7655	4,786.50	2,010
MOABU	ACTUALS	3121	141	7671	535,041.38	2,010
MOABU	ACTUALS	4101	141	7671	12,581,369.23	2,010
MOABU	ACTUALS	4102	141	7671	15,887,827.11	2,010
MOABU	ACTUALS	4103	141	7671	5,191.26	2,010
MOABU	ACTUALS	4112	141	7671	18,347.00	2,010
MOABU	ACTUALS	4113	141	7671	8,936.60	2,010
MOABU	ACTUALS	4201	141	7671	19,677,382.28	2,010
MOABU	ACTUALS	4301	141	7671	98,975.52	2,010
MOABU	ACTUALS	3101	441	7672	91,973.39	2,010
MOABU	ACTUALS	5302	441	7672	2,500.00	2,010
MOABU	ACTUALS	3808	202	7684	6,171,887.18	2,010
MOABU	ACTUALS	3814	202	7684	13,536.00	2,010
MOABU	ACTUALS	3101	202	7685	5,313,734.35	2,010
MOABU	ACTUALS	3808	441	7707	6,472.49	2,010
MOABU	ACTUALS	1101	101	7710	216,628.70	2,010
MOABU	ACTUALS	1301	101	7710	48,834.03	2,010
MOABU	ACTUALS	1401	101	7710	130,102.30	2,010
MOABU	ACTUALS	2101	101	7710	4,160.37	2,010
MOABU	ACTUALS	2201	101	7710	201.60	2,010
MOABU	ACTUALS	2211	101	7710	3,378.67	2,010
MOABU	ACTUALS	3101	101	7710	5.25	2,010
MOABU	ACTUALS	3201	101	7710	1,829.56	2,010
MOABU	ACTUALS	3203	101	7710	410.16	2,010
MOABU	ACTUALS	3302	101	7710	334.00	2,010
MOABU	ACTUALS	3601	101	7710	1,850.00	2,010
MOABU	ACTUALS	3612	101	7710	9,200.00	2,010
MOABU	ACTUALS	3803	101	7710	308.69	2,010
MOABU	ACTUALS	3805	101	7710	372.00	2,010
MOABU	ACTUALS	3808	101	7710	1,334.00	2,010
MOABU	ACTUALS	3814	101	7710	960.00	2,010
MOABU	ACTUALS	3822	101	7710	410.60	2,010
MOABU	ACTUALS	3828	101	7710	2,000.00	2,010
MOABU	ACTUALS	5605	101	7710	618.78	2,010
MOABU	ACTUALS	3101	241	77192G	8,066.10	2,010
MOABU	ACTUALS	1101	101	7720	252,871.77	2,010
MOABU	ACTUALS	1201	101	7720	8,535.14	2,010
MOABU	ACTUALS	1301	101	7720	28,445.27	2,010
MOABU	ACTUALS	1401	101	7720	150,840.13	2,010

2010 All Expend and Revenues

MOABU	ACTUALS	1501	101	7720	717.93	2,010
MOABU	ACTUALS	3702	101	7720	343.00	2,010
MOABU	ACTUALS	3802	101	7720	0.00	2,010
MOABU	ACTUALS	2101	231	772010G	32.36	2,010
MOABU	ACTUALS	3101	231	772010G	69,409.27	2,010
MOABU	ACTUALS	3201	231	772010G	813.21	2,010
MOABU	ACTUALS	3203	231	772010G	72.60	2,010
MOABU	ACTUALS	3334	231	772010G	3,105.90	2,010
MOABU	ACTUALS	3335	231	772010G	278.00	2,010
MOABU	ACTUALS	3336	231	772010G	3,144.65	2,010
MOABU	ACTUALS	3337	231	772010G	864.00	2,010
MOABU	ACTUALS	3338	231	772010G	3,825.00	2,010
MOABU	ACTUALS	3612	231	772010G	995.00	2,010
MOABU	ACTUALS	3701	231	772010G	225.00	2,010
MOABU	ACTUALS	3702	231	772010G	3,773.00	2,010
MOABU	ACTUALS	3802	231	772010G	1,867.70	2,010
MOABU	ACTUALS	3803	231	772010G	45.00	2,010
MOABU	ACTUALS	3805	231	772010G	2,236.43	2,010
MOABU	ACTUALS	3814	231	772010G	37.55	2,010
MOABU	ACTUALS	3828	231	772010G	45.00	2,010
MOABU	ACTUALS	3838	231	772010G	34.95	2,010
MOABU	ACTUALS	5604	231	772010G	882.20	2,010
MOABU	ACTUALS	3101	231	77209G	0.00	2,010
MOABU	ACTUALS	3201	231	77209G	62.87	2,010
MOABU	ACTUALS	3203	231	77209G	0.00	2,010
MOABU	ACTUALS	3814	231	77209G	30.00	2,010
MOABU	ACTUALS	3101	231	77213G	50,498.10	2,010
MOABU	ACTUALS	1101	231	77214G	24,488.24	2,010
MOABU	ACTUALS	1301	231	77214G	2,123.78	2,010
MOABU	ACTUALS	1401	231	77214G	16,980.07	2,010
MOABU	ACTUALS	3201	231	77214G	0.00	2,010
MOABU	ACTUALS	3805	231	77214G	0.00	2,010
MOABU	ACTUALS	1101	231	77216G	68,105.65	2,010
MOABU	ACTUALS	1301	231	77216G	6,492.70	2,010
MOABU	ACTUALS	1401	231	77216G	34,179.52	2,010
MOABU	ACTUALS	2201	231	77224G	240.00	2,010
MOABU	ACTUALS	3101	231	77224G	5,425.06	2,010
MOABU	ACTUALS	3803	231	77224G	5,987.00	2,010
MOABU	ACTUALS	3815	231	77224G	345.00	2,010
MOABU	ACTUALS	3828	231	77224G	414.00	2,010
MOABU	ACTUALS	3841	231	77227G	-25.62	2,010
MOABU	ACTUALS	1101	231	77239G	43,956.61	2,010
MOABU	ACTUALS	1301	231	77239G	3,193.35	2,010
MOABU	ACTUALS	1401	231	77239G	27,691.55	2,010
MOABU	ACTUALS	3101	231	77249G	67,029.83	2,010
MOABU	ACTUALS	3101	231	77255G	9,068.53	2,010
MOABU	ACTUALS	3815	231	77255G	128.00	2,010
MOABU	ACTUALS	2201	231	77265G	-146,509.94	2,010
MOABU	ACTUALS	3712	231	77265G	-4,337.10	2,010
MOABU	ACTUALS	3101	231	77276G	0.00	2,010
MOABU	ACTUALS	3101	231	77279G	47,437.81	2,010
MOABU	ACTUALS	3101	231	772810G	0.00	2,010
MOABU	ACTUALS	3101	231	77288G	110,829.08	2,010
MOABU	ACTUALS	3815	231	77288G	0.00	2,010
MOABU	ACTUALS	3101	441	7729	0.00	2,010

2010 All Expend and Revenues

MOABU	ACTUALS	1201	401	7730	45,374.10	2,010
MOABU	ACTUALS	1301	401	7730	1,960.14	2,010
MOABU	ACTUALS	1401	401	7730	13,028.60	2,010
MOABU	ACTUALS	1501	401	7730	686.00	2,010
MOABU	ACTUALS	2201	401	7730	111.98	2,010
MOABU	ACTUALS	2209	401	7730	4,820.87	2,010
MOABU	ACTUALS	2211	401	7730	2,281.87	2,010
MOABU	ACTUALS	2301	401	7730	452.91	2,010
MOABU	ACTUALS	3601	401	7730	190.00	2,010
MOABU	ACTUALS	3701	401	7730	1,010.00	2,010
MOABU	ACTUALS	3702	401	7730	6,080.00	2,010
MOABU	ACTUALS	5412	401	7730	35,000.00	2,010
MOABU	ACTUALS	5603	401	7730	1,356.00	2,010
MOABU	ACTUALS	3101	441	7731	25,360.05	2,010
MOABU	ACTUALS	5302	441	7731	53,998.84	2,010
MOABU	ACTUALS	1101	101	7740	822,965.84	2,010
MOABU	ACTUALS	1201	101	7740	30,368.89	2,010
MOABU	ACTUALS	1301	101	7740	80,771.06	2,010
MOABU	ACTUALS	1401	101	7740	421,805.61	2,010
MOABU	ACTUALS	1501	101	7740	264.00	2,010
MOABU	ACTUALS	2101	101	7740	218.20	2,010
MOABU	ACTUALS	2201	101	7740	6,769.81	2,010
MOABU	ACTUALS	2208	101	7740	5,823.98	2,010
MOABU	ACTUALS	2211	101	7740	849.64	2,010
MOABU	ACTUALS	2301	101	7740	73,054.51	2,010
MOABU	ACTUALS	3201	101	7740	2,469.08	2,010
MOABU	ACTUALS	3203	101	7740	145.20	2,010
MOABU	ACTUALS	3303	101	7740	3,626.77	2,010
MOABU	ACTUALS	3501	101	7740	5,341.62	2,010
MOABU	ACTUALS	3601	101	7740	35,585.16	2,010
MOABU	ACTUALS	3701	101	7740	300.00	2,010
MOABU	ACTUALS	3702	101	7740	31,208.00	2,010
MOABU	ACTUALS	3802	101	7740	41.90	2,010
MOABU	ACTUALS	3805	101	7740	276.00	2,010
MOABU	ACTUALS	3828	101	7740	1,840.00	2,010
MOABU	ACTUALS	5411	101	7740	2,440.20	2,010
MOABU	ACTUALS	5603	101	7740	8,588.57	2,010
MOABU	ACTUALS	5604	101	7740	1,256.64	2,010
MOABU	ACTUALS	5609	101	7740	902.35	2,010
MOABU	ACTUALS	1101	141	7750	450,043.42	2,010
MOABU	ACTUALS	1201	141	7750	36,433.11	2,010
MOABU	ACTUALS	1301	141	7750	39,743.54	2,010
MOABU	ACTUALS	1401	141	7750	271,857.32	2,010
MOABU	ACTUALS	1501	141	7750	23,962.35	2,010
MOABU	ACTUALS	2101	141	7750	46.11	2,010
MOABU	ACTUALS	2201	141	7750	392,174.97	2,010
MOABU	ACTUALS	2208	141	7750	2,900.63	2,010
MOABU	ACTUALS	2209	141	7750	14,150.06	2,010
MOABU	ACTUALS	2211	141	7750	436.40	2,010
MOABU	ACTUALS	2301	141	7750	2,387.74	2,010
MOABU	ACTUALS	2402	141	7750	-5,411.33	2,010
MOABU	ACTUALS	3105	141	7750	206.00	2,010
MOABU	ACTUALS	3201	141	7750	3,348.19	2,010
MOABU	ACTUALS	3203	141	7750	145.30	2,010
MOABU	ACTUALS	3303	141	7750	539.47	2,010

2010 All Expend and Revenues

MOABU	ACTUALS	3501	141	7750	131.00	2,010
MOABU	ACTUALS	3601	141	7750	150.00	2,010
MOABU	ACTUALS	3612	141	7750	4,800.00	2,010
MOABU	ACTUALS	3702	141	7750	64,339.00	2,010
MOABU	ACTUALS	3712	141	7750	4,337.10	2,010
MOABU	ACTUALS	3805	141	7750	1,000.00	2,010
MOABU	ACTUALS	3808	141	7750	151.20	2,010
MOABU	ACTUALS	3814	141	7750	300.00	2,010
MOABU	ACTUALS	3828	141	7750	1,109.00	2,010
MOABU	ACTUALS	3838	141	7750	192.90	2,010
MOABU	ACTUALS	5401	141	7750	12,322.53	2,010
MOABU	ACTUALS	5411	141	7750	2,952.75	2,010
MOABU	ACTUALS	5412	141	7750	0.00	2,010
MOABU	ACTUALS	5603	141	7750	594.00	2,010
MOABU	ACTUALS	5604	141	7750	139.99	2,010
MOABU	ACTUALS	3101	441	7754	20,919.00	2,010
MOABU	ACTUALS	3106	441	7754	64.00	2,010
MOABU	ACTUALS	3803	441	7754	794.92	2,010
MOABU	ACTUALS	3814	441	7754	360.00	2,010
MOABU	ACTUALS	5302	441	7754	129,464.00	2,010
MOABU	ACTUALS	5401	441	7754	0.00	2,010
MOABU	ACTUALS	1101	141	7760	217,097.04	2,010
MOABU	ACTUALS	1301	141	7760	23,071.46	2,010
MOABU	ACTUALS	1401	141	7760	117,365.07	2,010
MOABU	ACTUALS	2201	141	7760	79.99	2,010
MOABU	ACTUALS	2208	141	7760	1,976.61	2,010
MOABU	ACTUALS	2211	141	7760	365.32	2,010
MOABU	ACTUALS	2301	141	7760	267.23	2,010
MOABU	ACTUALS	3105	141	7760	71.00	2,010
MOABU	ACTUALS	3201	141	7760	1.58	2,010
MOABU	ACTUALS	3303	141	7760	41.91	2,010
MOABU	ACTUALS	3702	141	7760	6,484.00	2,010
MOABU	ACTUALS	3803	141	7760	1,006.36	2,010
MOABU	ACTUALS	3805	141	7760	410.00	2,010
MOABU	ACTUALS	3828	141	7760	135.00	2,010
MOABU	ACTUALS	3838	141	7760	124.68	2,010
MOABU	ACTUALS	1101	141	7770	185,976.24	2,010
MOABU	ACTUALS	1201	141	7770	2,323.17	2,010
MOABU	ACTUALS	1301	141	7770	14,512.70	2,010
MOABU	ACTUALS	1401	141	7770	93,614.92	2,010
MOABU	ACTUALS	1501	141	7770	339.06	2,010
MOABU	ACTUALS	2201	141	7770	199.29	2,010
MOABU	ACTUALS	2208	141	7770	68.99	2,010
MOABU	ACTUALS	2209	141	7770	389.67	2,010
MOABU	ACTUALS	2211	141	7770	264.97	2,010
MOABU	ACTUALS	3201	141	7770	525.15	2,010
MOABU	ACTUALS	3203	141	7770	84.37	2,010
MOABU	ACTUALS	3702	141	7770	1,216.00	2,010
MOABU	ACTUALS	3805	141	7770	544.00	2,010
MOABU	ACTUALS	3828	141	7770	135.00	2,010
MOABU	ACTUALS	3838	141	7770	957.93	2,010
MOABU	ACTUALS	5604	141	7770	196.00	2,010
MOABU	ACTUALS	1101	141	7780	361,592.01	2,010
MOABU	ACTUALS	1201	141	7780	15,239.36	2,010
MOABU	ACTUALS	1301	141	7780	52,956.74	2,010

2010 All Expend and Revenues

MOABU	ACTUALS	1401	141	7780	205,836.50	2,010
MOABU	ACTUALS	1501	141	7780	944.58	2,010
MOABU	ACTUALS	2101	141	7780	915.96	2,010
MOABU	ACTUALS	2201	141	7780	127.99	2,010
MOABU	ACTUALS	2208	141	7780	2,196.13	2,010
MOABU	ACTUALS	2301	141	7780	47.19	2,010
MOABU	ACTUALS	3105	141	7780	102.00	2,010
MOABU	ACTUALS	3201	141	7780	4,284.15	2,010
MOABU	ACTUALS	3203	141	7780	93.92	2,010
MOABU	ACTUALS	3302	141	7780	70.85	2,010
MOABU	ACTUALS	3612	141	7780	6,575.00	2,010
MOABU	ACTUALS	3702	141	7780	8,628.00	2,010
MOABU	ACTUALS	3712	141	7780	0.00	2,010
MOABU	ACTUALS	3802	141	7780	924.60	2,010
MOABU	ACTUALS	3805	141	7780	789.00	2,010
MOABU	ACTUALS	3808	141	7780	219.00	2,010
MOABU	ACTUALS	3822	141	7780	104.80	2,010
MOABU	ACTUALS	3828	141	7780	405.00	2,010
MOABU	ACTUALS	3838	141	7780	1,102.39	2,010
MOABU	ACTUALS	5412	141	7780	0.00	2,010
MOABU	ACTUALS	1101	141	7790	657,871.98	2,010
MOABU	ACTUALS	1201	141	7790	133,281.06	2,010
MOABU	ACTUALS	1301	141	7790	80,092.51	2,010
MOABU	ACTUALS	1401	141	7790	328,021.11	2,010
MOABU	ACTUALS	1501	141	7790	1,372.00	2,010
MOABU	ACTUALS	2101	141	7790	1,864.22	2,010
MOABU	ACTUALS	2201	141	7790	3,020.17	2,010
MOABU	ACTUALS	2208	141	7790	19,350.86	2,010
MOABU	ACTUALS	2211	141	7790	731.26	2,010
MOABU	ACTUALS	2301	141	7790	44,863.90	2,010
MOABU	ACTUALS	3201	141	7790	1,053.26	2,010
MOABU	ACTUALS	3203	141	7790	488.39	2,010
MOABU	ACTUALS	3303	141	7790	1,132.10	2,010
MOABU	ACTUALS	3601	141	7790	2,574.48	2,010
MOABU	ACTUALS	3701	141	7790	4,698.10	2,010
MOABU	ACTUALS	3702	141	7790	38,397.00	2,010
MOABU	ACTUALS	3805	141	7790	920.00	2,010
MOABU	ACTUALS	3808	141	7790	1,179.97	2,010
MOABU	ACTUALS	3814	141	7790	282.00	2,010
MOABU	ACTUALS	3828	141	7790	4,501.25	2,010
MOABU	ACTUALS	3838	141	7790	289.84	2,010
MOABU	ACTUALS	5401	141	7790	14,084.52	2,010
MOABU	ACTUALS	5603	141	7790	26,681.18	2,010

CSP IGC's

IGC Expenditures from CSP Agencies

Unit	Ledger	Acct	Fund	DeptID	Sum Total	Year
					Amt	
MOABU	ACTUALS	6145	441	7008	458.78	2010
MOABU	ACTUALS	6147	441	7008	1,221.77	2010
MOABU	ACTUALS	6145	441	7009	180.20	2010
MOABU	ACTUALS	6147	441	7009	72.47	2010
MOABU	ACTUALS	6022	241	7247G	1.00	2010
MOABU	ACTUALS	6061	241	7247G	-23.00	2010
MOABU	ACTUALS	6091	241	7247G	-89.00	2010
MOABU	ACTUALS	6095	241	7247G	10.00	2010
MOABU	ACTUALS	6103	241	7247G	-154.00	2010
MOABU	ACTUALS	6104	241	7247G	30.00	2010
MOABU	ACTUALS	6105	241	7247G	-46.00	2010
MOABU	ACTUALS	6109	241	7247G	-3.00	2010
MOABU	ACTUALS	6110	241	7247G	-112.00	2010
MOABU	ACTUALS	6145	409	7269	567.22	2010
MOABU	ACTUALS	6147	409	7269	1,510.51	2010
MOABU	ACTUALS	6145	231	7271G	1,211.21	2010
MOABU	ACTUALS	6147	231	7271G	266.35	2010
MOABU	ACTUALS	6022	231	72713G	0.00	2010
MOABU	ACTUALS	6091	231	72713G	0.00	2010
MOABU	ACTUALS	6095	231	72713G	0.00	2010
MOABU	ACTUALS	6103	231	72713G	0.00	2010
MOABU	ACTUALS	6104	231	72713G	0.00	2010
MOABU	ACTUALS	6105	231	72713G	0.00	2010
MOABU	ACTUALS	6109	231	72713G	0.00	2010
MOABU	ACTUALS	6110	231	72713G	0.00	2010
MOABU	ACTUALS	6022	231	72756G	32.92	2010
MOABU	ACTUALS	6061	231	72756G	77.34	2010
MOABU	ACTUALS	6091	231	72756G	531.63	2010
MOABU	ACTUALS	6095	231	72756G	3,377.76	2010
MOABU	ACTUALS	6103	231	72756G	12,176.47	2010
MOABU	ACTUALS	6104	231	72756G	617.91	2010
MOABU	ACTUALS	6105	231	72756G	1,459.72	2010
MOABU	ACTUALS	6109	231	72756G	87.28	2010
MOABU	ACTUALS	6110	231	72756G	3,922.35	2010
MOABU	ACTUALS	6145	231	72756G	335.06	2010
MOABU	ACTUALS	6147	231	72756G	73.81	2010
MOABU	ACTUALS	6181	231	72756G	469.00	2010
MOABU	ACTUALS	6198	231	72756G	679.03	2010
MOABU	ACTUALS	6022	101	7310	941.28	2010
MOABU	ACTUALS	6026	101	7310	7,925.99	2010
MOABU	ACTUALS	6029	101	7310	4.44	2010
MOABU	ACTUALS	6037	101	7310	22,930.85	2010
MOABU	ACTUALS	6048	101	7310	49,195.98	2010
MOABU	ACTUALS	6049	101	7310	8,582.09	2010
MOABU	ACTUALS	6061	101	7310	11,117.23	2010
MOABU	ACTUALS	6064	101	7310	10,231.68	2010
MOABU	ACTUALS	6073	101	7310	31,356.13	2010
MOABU	ACTUALS	6079	101	7310	44,323.68	2010
MOABU	ACTUALS	6080	101	7310	45,731.04	2010
MOABU	ACTUALS	6088	101	7310	25,660.54	2010
MOABU	ACTUALS	6089	101	7310	36,472.89	2010
MOABU	ACTUALS	6091	101	7310	14,005.26	2010

CSP IGC's

Unit	Ledger	Acct	Fund	DeptID	Sum Total	Year
					Amt	
MOABU	ACTUALS	6094	101	7310	5,487.92	2010
MOABU	ACTUALS	6095	101	7310	41,189.26	2010
MOABU	ACTUALS	6103	101	7310	56,788.59	2010
MOABU	ACTUALS	6104	101	7310	10,054.31	2010
MOABU	ACTUALS	6105	101	7310	3,837.36	2010
MOABU	ACTUALS	6110	101	7310	164,193.53	2010
MOABU	ACTUALS	6145	101	7310	2,165.21	2010
MOABU	ACTUALS	6147	101	7310	476.30	2010
MOABU	ACTUALS	6181	101	7310	11,795.44	2010
MOABU	ACTUALS	6198	101	7310	19,675.56	2010
MOABU	ACTUALS	6666	101	7310	2,352.59	2010
MOABU	ACTUALS	6668	101	7310	62,962.80	2010
MOABU	ACTUALS	6145	101	7320	5,590.56	2010
MOABU	ACTUALS	6147	101	7320	1,223.07	2010
MOABU	ACTUALS	6145	101	7321	2,947.18	2010
MOABU	ACTUALS	6147	101	7321	648.53	2010
MOABU	ACTUALS	6666	101	7321	3,212.47	2010
MOABU	ACTUALS	6668	101	7321	14,143.14	2010
MOABU	ACTUALS	6145	101	7322	1,474.41	2010
MOABU	ACTUALS	6147	101	7322	324.39	2010
MOABU	ACTUALS	6145	101	7323	1,350.70	2010
MOABU	ACTUALS	6147	101	7323	297.05	2010
MOABU	ACTUALS	6022	101	7324	2.00	2010
MOABU	ACTUALS	6091	101	7324	39.00	2010
MOABU	ACTUALS	6095	101	7324	250.00	2010
MOABU	ACTUALS	6103	101	7324	904.00	2010
MOABU	ACTUALS	6104	101	7324	45.00	2010
MOABU	ACTUALS	6105	101	7324	108.00	2010
MOABU	ACTUALS	6109	101	7324	6.00	2010
MOABU	ACTUALS	6110	101	7324	291.00	2010
MOABU	ACTUALS	6145	101	7324	6,680.22	2010
MOABU	ACTUALS	6147	101	7324	1,469.37	2010
MOABU	ACTUALS	6145	101	7326	1,131.39	2010
MOABU	ACTUALS	6147	101	7326	248.70	2010
MOABU	ACTUALS	6145	101	7331	2,870.07	2010
MOABU	ACTUALS	6147	101	7331	631.43	2010
MOABU	ACTUALS	6666	101	7331	638,038.87	2010
MOABU	ACTUALS	6145	101	7340	2,617.03	2010
MOABU	ACTUALS	6147	101	7340	575.74	2010
MOABU	ACTUALS	6145	101	7360	17,206.25	2010
MOABU	ACTUALS	6147	101	7360	3,785.37	2010
MOABU	ACTUALS	6109	101	7390	111,096.84	2010
MOABU	ACTUALS	6145	101	7390	4,435.49	2010
MOABU	ACTUALS	6147	101	7390	975.62	2010
MOABU	ACTUALS	6022	101	7410	781.99	2010
MOABU	ACTUALS	6026	101	7410	2,874.40	2010
MOABU	ACTUALS	6029	101	7410	41.26	2010
MOABU	ACTUALS	6037	101	7410	8,620.70	2010
MOABU	ACTUALS	6048	101	7410	35,770.61	2010
MOABU	ACTUALS	6049	101	7410	8,582.14	2010
MOABU	ACTUALS	6061	101	7410	88.04	2010
MOABU	ACTUALS	6064	101	7410	378.95	2010
MOABU	ACTUALS	6073	101	7410	10,710.65	2010

CSP IGC's

Unit	Ledger	Acct	Fund	DeptID	Sum Total	Year
					Amt	
MOABU	ACTUALS	6079	101	7410	30,653.77	2010
MOABU	ACTUALS	6080	101	7410	2,577.56	2010
MOABU	ACTUALS	6088	101	7410	950.39	2010
MOABU	ACTUALS	6089	101	7410	1,350.85	2010
MOABU	ACTUALS	6091	101	7410	5,265.17	2010
MOABU	ACTUALS	6094	101	7410	203.24	2010
MOABU	ACTUALS	6095	101	7410	3,169.64	2010
MOABU	ACTUALS	6103	101	7410	18,172.32	2010
MOABU	ACTUALS	6104	101	7410	513.07	2010
MOABU	ACTUALS	6105	101	7410	4,052.14	2010
MOABU	ACTUALS	6110	101	7410	13,154.48	2010
MOABU	ACTUALS	6145	101	7410	1,829.42	2010
MOABU	ACTUALS	6147	101	7410	751.23	2010
MOABU	ACTUALS	6181	101	7410	436.86	2010
MOABU	ACTUALS	6198	101	7410	728.75	2010
MOABU	ACTUALS	6666	101	7410	4,826.86	2010
MOABU	ACTUALS	6668	101	7410	21,250.45	2010
MOABU	ACTUALS	6026	101	7429	899.66	2010
MOABU	ACTUALS	6029	101	7429	0.00	2010
MOABU	ACTUALS	6037	101	7429	2,157.74	2010
MOABU	ACTUALS	6048	101	7429	570.46	2010
MOABU	ACTUALS	6061	101	7429	352.14	2010
MOABU	ACTUALS	6064	101	7429	1,515.80	2010
MOABU	ACTUALS	6073	101	7429	3,548.09	2010
MOABU	ACTUALS	6080	101	7429	2,540.23	2010
MOABU	ACTUALS	6088	101	7429	3,801.56	2010
MOABU	ACTUALS	6089	101	7429	5,403.39	2010
MOABU	ACTUALS	6091	101	7429	1,317.84	2010
MOABU	ACTUALS	6094	101	7429	813.02	2010
MOABU	ACTUALS	6104	101	7429	1,355.05	2010
MOABU	ACTUALS	6105	101	7429	75.45	2010
MOABU	ACTUALS	6110	101	7429	1,316.62	2010
MOABU	ACTUALS	6145	101	7429	15,196.42	2010
MOABU	ACTUALS	6147	101	7429	21,795.36	2010
MOABU	ACTUALS	6181	101	7429	1,747.47	2010
MOABU	ACTUALS	6198	101	7429	2,914.90	2010
MOABU	ACTUALS	6026	141	7430	22,754.87	2010
MOABU	ACTUALS	6029	141	7430	0.40	2010
MOABU	ACTUALS	6037	141	7430	53,830.93	2010
MOABU	ACTUALS	6048	141	7430	8,343.22	2010
MOABU	ACTUALS	6061	141	7430	5,150.12	2010
MOABU	ACTUALS	6064	141	7430	22,168.66	2010
MOABU	ACTUALS	6073	141	7430	7,663.09	2010
MOABU	ACTUALS	6080	141	7430	28,456.13	2010
MOABU	ACTUALS	6088	141	7430	55,597.83	2010
MOABU	ACTUALS	6089	141	7430	79,024.62	2010
MOABU	ACTUALS	6091	141	7430	32,877.78	2010
MOABU	ACTUALS	6094	141	7430	11,890.48	2010
MOABU	ACTUALS	6095	141	7430	19,485.66	2010
MOABU	ACTUALS	6104	141	7430	18,931.18	2010
MOABU	ACTUALS	6105	141	7430	6,188.53	2010
MOABU	ACTUALS	6110	141	7430	29,832.06	2010
MOABU	ACTUALS	6145	141	7430	265,354.90	2010

CSP IGC's

Unit	Ledger	Acct	Fund	DeptID	Sum Total	Year
					Amt	
MOABU	ACTUALS	6147	141	7430	380,927.52	2010
MOABU	ACTUALS	6181	141	7430	25,556.78	2010
MOABU	ACTUALS	6198	141	7430	42,630.43	2010
MOABU	ACTUALS	6666	141	7430	159,164.28	2010
MOABU	ACTUALS	6668	141	7430	516,746.25	2010
MOABU	ACTUALS	6026	119	7449	4,075.07	2010
MOABU	ACTUALS	6029	119	7449	0.01	2010
MOABU	ACTUALS	6037	119	7449	8,304.43	2010
MOABU	ACTUALS	6048	119	7449	285.23	2010
MOABU	ACTUALS	6061	119	7449	176.08	2010
MOABU	ACTUALS	6064	119	7449	757.89	2010
MOABU	ACTUALS	6080	119	7449	2,080.58	2010
MOABU	ACTUALS	6088	119	7449	1,900.78	2010
MOABU	ACTUALS	6089	119	7449	2,701.69	2010
MOABU	ACTUALS	6091	119	7449	5,072.04	2010
MOABU	ACTUALS	6094	119	7449	406.51	2010
MOABU	ACTUALS	6095	119	7449	4,105.22	2010
MOABU	ACTUALS	6104	119	7449	526.25	2010
MOABU	ACTUALS	6105	119	7449	1,486.18	2010
MOABU	ACTUALS	6110	119	7449	4,566.20	2010
MOABU	ACTUALS	6145	119	7449	11,592.37	2010
MOABU	ACTUALS	6147	119	7449	16,659.77	2010
MOABU	ACTUALS	6181	119	7449	873.71	2010
MOABU	ACTUALS	6198	119	7449	1,457.44	2010
MOABU	ACTUALS	6668	119	7449	47,403.02	2010
MOABU	ACTUALS	6026	105	7450	302.02	2010
MOABU	ACTUALS	6037	105	7450	827.56	2010
MOABU	ACTUALS	6080	105	7450	147.95	2010
MOABU	ACTUALS	6091	105	7450	505.42	2010
MOABU	ACTUALS	6095	105	7450	354.88	2010
MOABU	ACTUALS	6110	105	7450	841.71	2010
MOABU	ACTUALS	6026	106	7460	850.41	2010
MOABU	ACTUALS	6037	106	7460	2,339.39	2010
MOABU	ACTUALS	6080	106	7460	127.88	2010
MOABU	ACTUALS	6091	106	7460	1,428.81	2010
MOABU	ACTUALS	6105	106	7460	650.19	2010
MOABU	ACTUALS	6110	106	7460	1,127.27	2010
MOABU	ACTUALS	6026	141	7470	5,284.17	2010
MOABU	ACTUALS	6037	141	7470	16,944.24	2010
MOABU	ACTUALS	6048	141	7470	71.30	2010
MOABU	ACTUALS	6061	141	7470	44.02	2010
MOABU	ACTUALS	6064	141	7470	189.49	2010
MOABU	ACTUALS	6080	141	7470	2,307.17	2010
MOABU	ACTUALS	6088	141	7470	475.19	2010
MOABU	ACTUALS	6089	141	7470	675.41	2010
MOABU	ACTUALS	6091	141	7470	10,348.86	2010
MOABU	ACTUALS	6094	141	7470	101.64	2010
MOABU	ACTUALS	6095	141	7470	37,680.88	2010
MOABU	ACTUALS	6105	141	7470	2,130.56	2010
MOABU	ACTUALS	6110	141	7470	12,874.92	2010
MOABU	ACTUALS	6145	141	7470	953.38	2010
MOABU	ACTUALS	6147	141	7470	1,380.55	2010
MOABU	ACTUALS	6181	141	7470	218.42	2010

CSP IGC's

Unit	Ledger	Acct	Fund	DeptID	Sum Total	Year
					Amt	
MOABU	ACTUALS	6198	141	7470	364.37	2010
MOABU	ACTUALS	6666	141	7470	811.24	2010
MOABU	ACTUALS	6668	141	7470	2,633.78	2010
MOABU	ACTUALS	6026	129	7472	316.81	2010
MOABU	ACTUALS	6037	129	7472	653.59	2010
MOABU	ACTUALS	6080	129	7472	581.80	2010
MOABU	ACTUALS	6091	129	7472	399.20	2010
MOABU	ACTUALS	6095	129	7472	8,912.12	2010
MOABU	ACTUALS	6105	129	7472	737.25	2010
MOABU	ACTUALS	6110	129	7472	5,122.30	2010
MOABU	ACTUALS	6037	119	7473	8,275.14	2010
MOABU	ACTUALS	6091	119	7473	5,054.11	2010
MOABU	ACTUALS	6022	101	7510	72.41	2010
MOABU	ACTUALS	6026	101	7510	9,428.03	2010
MOABU	ACTUALS	6029	101	7510	12,194.59	2010
MOABU	ACTUALS	6037	101	7510	32,727.64	2010
MOABU	ACTUALS	6048	101	7510	82,027.77	2010
MOABU	ACTUALS	6049	101	7510	8,582.11	2010
MOABU	ACTUALS	6061	101	7510	2,905.20	2010
MOABU	ACTUALS	6064	101	7510	12,505.40	2010
MOABU	ACTUALS	6073	101	7510	25,037.63	2010
MOABU	ACTUALS	6079	101	7510	64,207.25	2010
MOABU	ACTUALS	6080	101	7510	30,564.45	2010
MOABU	ACTUALS	6088	101	7510	31,362.89	2010
MOABU	ACTUALS	6089	101	7510	44,577.99	2010
MOABU	ACTUALS	6091	101	7510	19,988.76	2010
MOABU	ACTUALS	6094	101	7510	6,707.45	2010
MOABU	ACTUALS	6095	101	7510	18,162.96	2010
MOABU	ACTUALS	6103	101	7510	18,172.35	2010
MOABU	ACTUALS	6104	101	7510	15,448.19	2010
MOABU	ACTUALS	6105	101	7510	6,705.18	2010
MOABU	ACTUALS	6110	101	7510	80,285.60	2010
MOABU	ACTUALS	6145	101	7510	6,868.14	2010
MOABU	ACTUALS	6147	101	7510	9,911.04	2010
MOABU	ACTUALS	6181	101	7510	14,416.64	2010
MOABU	ACTUALS	6198	101	7510	24,047.94	2010
MOABU	ACTUALS	6668	101	7510	17,638.08	2010
MOABU	ACTUALS	6145	101	7520	1,114.74	2010
MOABU	ACTUALS	6147	101	7520	10,591.52	2010
MOABU	ACTUALS	6666	101	7520	63,555.03	2010
MOABU	ACTUALS	6109	181	7530	31,527.76	2010
MOABU	ACTUALS	6145	181	7530	4,220.22	2010
MOABU	ACTUALS	6147	181	7530	34,951.15	2010
MOABU	ACTUALS	6666	181	7530	638,038.88	2010
MOABU	ACTUALS	6668	181	7530	17,445.54	2010
MOABU	ACTUALS	6145	181	7540	1,463.32	2010
MOABU	ACTUALS	6147	181	7540	13,921.97	2010
MOABU	ACTUALS	6668	181	7540	8,828.13	2010
MOABU	ACTUALS	6145	101	7542	503.10	2010
MOABU	ACTUALS	6147	101	7542	4,796.78	2010
MOABU	ACTUALS	6145	101	7543	285.65	2010
MOABU	ACTUALS	6147	101	7543	2,721.21	2010
MOABU	ACTUALS	6145	181	7552	737.96	2010

CSP IGC's

Unit	Ledger	Acct	Fund	DeptID	Sum Total	Year
					Amt	
MOABU	ACTUALS	6147	181	7552	7,047.73	2010
MOABU	ACTUALS	6668	181	7552	19,639.85	2010
MOABU	ACTUALS	6075	101	7560	33,703.29	2010
MOABU	ACTUALS	6109	101	7560	15,154.38	2010
MOABU	ACTUALS	6145	101	7560	1,277.93	2010
MOABU	ACTUALS	6147	101	7560	12,260.48	2010
MOABU	ACTUALS	6668	101	7560	7,487.57	2010
MOABU	ACTUALS	6145	181	7570	535.99	2010
MOABU	ACTUALS	6147	181	7570	5,111.19	2010
MOABU	ACTUALS	6668	181	7570	788.37	2010
MOABU	ACTUALS	6080	141	7671	210.66	2010
MOABU	ACTUALS	6095	141	7671	250.02	2010
MOABU	ACTUALS	6022	101	7710	333.60	2010
MOABU	ACTUALS	6026	101	7710	7,030.76	2010
MOABU	ACTUALS	6029	101	7710	0.17	2010
MOABU	ACTUALS	6037	101	7710	19,483.91	2010
MOABU	ACTUALS	6048	101	7710	51,816.16	2010
MOABU	ACTUALS	6049	101	7710	8,582.08	2010
MOABU	ACTUALS	6061	101	7710	3,836.64	2010
MOABU	ACTUALS	6064	101	7710	9,663.25	2010
MOABU	ACTUALS	6073	101	7710	8,296.96	2010
MOABU	ACTUALS	6079	101	7710	44,323.70	2010
MOABU	ACTUALS	6080	101	7710	20,382.79	2010
MOABU	ACTUALS	6088	101	7710	24,234.94	2010
MOABU	ACTUALS	6089	101	7710	34,446.60	2010
MOABU	ACTUALS	6091	101	7710	12,451.00	2010
MOABU	ACTUALS	6094	101	7710	5,183.04	2010
MOABU	ACTUALS	6095	101	7710	13,723.63	2010
MOABU	ACTUALS	6103	101	7710	22,942.53	2010
MOABU	ACTUALS	6104	101	7710	9,143.27	2010
MOABU	ACTUALS	6105	101	7710	2,442.89	2010
MOABU	ACTUALS	6109	101	7710	39.00	2010
MOABU	ACTUALS	6110	101	7710	51,612.85	2010
MOABU	ACTUALS	6145	101	7710	8,409.07	2010
MOABU	ACTUALS	6147	101	7710	11,996.43	2010
MOABU	ACTUALS	6181	101	7710	11,140.14	2010
MOABU	ACTUALS	6198	101	7710	18,582.50	2010
MOABU	ACTUALS	6668	101	7710	4,577.53	2010
MOABU	ACTUALS	6145	101	7720	2,589.88	2010
MOABU	ACTUALS	6147	101	7720	6,741.84	2010
MOABU	ACTUALS	6668	101	7720	4,101.64	2010
MOABU	ACTUALS	6022	231	772010G	55.00	2010
MOABU	ACTUALS	6091	231	772010G	887.00	2010
MOABU	ACTUALS	6095	231	772010G	5,620.00	2010
MOABU	ACTUALS	6103	231	772010G	20,260.00	2010
MOABU	ACTUALS	6104	231	772010G	1,028.00	2010
MOABU	ACTUALS	6105	231	772010G	2,430.00	2010
MOABU	ACTUALS	6109	231	772010G	146.00	2010
MOABU	ACTUALS	6110	231	772010G	6,525.00	2010
MOABU	ACTUALS	6145	231	77214G	208.17	2010
MOABU	ACTUALS	6147	231	77214G	370.97	2010
MOABU	ACTUALS	6145	231	77216G	651.30	2010
MOABU	ACTUALS	6147	231	77216G	1,734.44	2010

CSP IGC's

Unit	Ledger	Acct	Fund	DeptID	Sum Total	Year
					Amt	
MOABU	ACTUALS	6022	231	77217G	-11.00	2010
MOABU	ACTUALS	6061	231	77217G	-12.00	2010
MOABU	ACTUALS	6091	231	77217G	-79.00	2010
MOABU	ACTUALS	6095	231	77217G	-252.00	2010
MOABU	ACTUALS	6103	231	77217G	-865.00	2010
MOABU	ACTUALS	6105	231	77217G	-130.00	2010
MOABU	ACTUALS	6109	231	77217G	-7.00	2010
MOABU	ACTUALS	6110	231	77217G	-264.00	2010
MOABU	ACTUALS	6022	231	77239G	8.00	2010
MOABU	ACTUALS	6061	231	77239G	103.00	2010
MOABU	ACTUALS	6091	231	77239G	139.00	2010
MOABU	ACTUALS	6095	231	77239G	884.00	2010
MOABU	ACTUALS	6103	231	77239G	3,187.00	2010
MOABU	ACTUALS	6104	231	77239G	298.00	2010
MOABU	ACTUALS	6105	231	77239G	382.00	2010
MOABU	ACTUALS	6109	231	77239G	22.00	2010
MOABU	ACTUALS	6110	231	77239G	1,026.00	2010
MOABU	ACTUALS	6145	231	77239G	420.60	2010
MOABU	ACTUALS	6147	231	77239G	1,087.89	2010
MOABU	ACTUALS	6181	231	77239G	627.00	2010
MOABU	ACTUALS	6198	231	77239G	907.00	2010
MOABU	ACTUALS	6022	231	77249G	-15.00	2010
MOABU	ACTUALS	6061	231	77249G	-104.00	2010
MOABU	ACTUALS	6091	231	77249G	-551.00	2010
MOABU	ACTUALS	6095	231	77249G	-916.00	2010
MOABU	ACTUALS	6103	231	77249G	-4,013.00	2010
MOABU	ACTUALS	6105	231	77249G	-620.00	2010
MOABU	ACTUALS	6109	231	77249G	-39.00	2010
MOABU	ACTUALS	6110	231	77249G	-1,526.00	2010
MOABU	ACTUALS	6022	231	772810G	16.00	2010
MOABU	ACTUALS	6091	231	772810G	255.00	2010
MOABU	ACTUALS	6095	231	772810G	1,617.00	2010
MOABU	ACTUALS	6103	231	772810G	5,831.00	2010
MOABU	ACTUALS	6105	231	772810G	699.00	2010
MOABU	ACTUALS	6109	231	772810G	42.00	2010
MOABU	ACTUALS	6110	231	772810G	1,878.00	2010
MOABU	ACTUALS	6145	401	7730	409.91	2010
MOABU	ACTUALS	6147	401	7730	1,091.31	2010
MOABU	ACTUALS	6109	101	7740	405.78	2010
MOABU	ACTUALS	6145	101	7740	8,323.08	2010
MOABU	ACTUALS	6147	101	7740	21,655.36	2010
MOABU	ACTUALS	6668	101	7740	19,547.24	2010
MOABU	ACTUALS	6145	141	7750	4,865.82	2010
MOABU	ACTUALS	6147	141	7750	12,742.00	2010
MOABU	ACTUALS	6666	141	7750	26,699.38	2010
MOABU	ACTUALS	6668	141	7750	63,010.71	2010
MOABU	ACTUALS	6145	141	7760	2,141.19	2010
MOABU	ACTUALS	6147	141	7760	5,603.74	2010
MOABU	ACTUALS	6145	141	7770	1,797.32	2010
MOABU	ACTUALS	6147	141	7770	4,681.13	2010
MOABU	ACTUALS	6145	141	7780	3,873.28	2010
MOABU	ACTUALS	6147	141	7780	10,135.00	2010
MOABU	ACTUALS	6666	141	7780	124,621.45	2010

CSP IGC's

Unit	Ledger	Acct	Fund	DeptID	Sum Total	Year
					Amt	
MOABU	ACTUALS	6668	141	7780	15,229.42	2010
MOABU	ACTUALS	6109	141	7790	4,133.59	2010
MOABU	ACTUALS	6145	141	7790	7,840.02	2010
MOABU	ACTUALS	6147	141	7790	20,368.53	2010
MOABU	ACTUALS	6666	141	7790	8,112.33	2010
MOABU	ACTUALS	6668	141	7790	19,145.21	2010

IGC's Expenditures

Unit	Ledger	Acct	Fund	DeptID	Sum Total	Year
					Amt	
MOABU	ACTUALS	6001	451	1705	14,963.20	2010
MOABU	ACTUALS	6001	441	7007	159,269.99	2010
MOABU	ACTUALS	6001	441	7008	1,358,873.23	2010
MOABU	ACTUALS	6145	441	7008	458.78	2010
MOABU	ACTUALS	6147	441	7008	1,221.77	2010
MOABU	ACTUALS	6743	441	7008	74,130.05	2010
MOABU	ACTUALS	6924	441	7008	716.00	2010
MOABU	ACTUALS	6001	441	7009	1,190,484.52	2010
MOABU	ACTUALS	6145	441	7009	180.20	2010
MOABU	ACTUALS	6147	441	7009	72.47	2010
MOABU	ACTUALS	6501	441	7009	24,960.00	2010
MOABU	ACTUALS	6717	441	7009	146,034.64	2010
MOABU	ACTUALS	6719	441	7009	33,594.88	2010
MOABU	ACTUALS	6720	441	7009	125,611.05	2010
MOABU	ACTUALS	6721	441	7009	-11,422.38	2010
MOABU	ACTUALS	6722	441	7009	152,562.96	2010
MOABU	ACTUALS	6723	441	7009	1,186,333.04	2010
MOABU	ACTUALS	6731	441	7009	26,226.98	2010
MOABU	ACTUALS	6735	441	7009	98,048.96	2010
MOABU	ACTUALS	6736	441	7009	426,350.13	2010
MOABU	ACTUALS	6743	441	7009	425,700.98	2010
MOABU	ACTUALS	6778	441	7009	112.00	2010
MOABU	ACTUALS	6924	441	7009	684,500.00	2010
MOABU	ACTUALS	6001	441	7010	81,220.15	2010
MOABU	ACTUALS	6736	441	7010	-7,519.10	2010
MOABU	ACTUALS	6743	441	7010	23,940.10	2010
MOABU	ACTUALS	6924	441	7010	741,800.00	2010
MOABU	ACTUALS	6741	419	7190	13,210.00	2010
MOABU	ACTUALS	6742	419	7190	21,000.00	2010
MOABU	ACTUALS	6924	419	7192	15,500.00	2010
MOABU	ACTUALS	6001	419	7198	859.72	2010
MOABU	ACTUALS	6001	419	7199	185.13	2010
MOABU	ACTUALS	6001	461	7202	8,197.92	2010
MOABU	ACTUALS	6001	241	7247G	902.20	2010
MOABU	ACTUALS	6022	241	7247G	1.00	2010
MOABU	ACTUALS	6061	241	7247G	-23.00	2010
MOABU	ACTUALS	6091	241	7247G	-89.00	2010
MOABU	ACTUALS	6095	241	7247G	10.00	2010
MOABU	ACTUALS	6103	241	7247G	-154.00	2010
MOABU	ACTUALS	6104	241	7247G	30.00	2010
MOABU	ACTUALS	6105	241	7247G	-46.00	2010
MOABU	ACTUALS	6109	241	7247G	-3.00	2010
MOABU	ACTUALS	6110	241	7247G	-112.00	2010
MOABU	ACTUALS	6001	231	7248G	0.00	2010
MOABU	ACTUALS	6924	231	7248G	148,200.00	2010
MOABU	ACTUALS	6001	441	7252	23,955.69	2010
MOABU	ACTUALS	6725	441	7252	-33,822.66	2010
MOABU	ACTUALS	6736	441	7252	5,563.44	2010
MOABU	ACTUALS	6778	441	7252	-316.68	2010
MOABU	ACTUALS	6001	441	7253	927,827.50	2010
MOABU	ACTUALS	6085	441	7253	128.25	2010
MOABU	ACTUALS	6924	441	7253	370,920.00	2010
MOABU	ACTUALS	6001	441	7254	182,569.38	2010

IGC's Expenditures

Unit	Ledger	Acct	Fund	DeptID	Sum Total	Year
					Amt	
MOABU	ACTUALS	6001	409	7262	386,841.93	2010
MOABU	ACTUALS	6500	409	7262	6,302.35	2010
MOABU	ACTUALS	6924	409	7262	424,914.00	2010
MOABU	ACTUALS	6736	406	7264	5,535.72	2010
MOABU	ACTUALS	6001	409	7269	9,420.30	2010
MOABU	ACTUALS	6145	409	7269	567.22	2010
MOABU	ACTUALS	6147	409	7269	1,510.51	2010
MOABU	ACTUALS	6736	409	7270	0.00	2010
MOABU	ACTUALS	6001	231	7271G	57,139.33	2010
MOABU	ACTUALS	6145	231	7271G	1,211.21	2010
MOABU	ACTUALS	6147	231	7271G	266.35	2010
MOABU	ACTUALS	6022	231	72713G	0.00	2010
MOABU	ACTUALS	6091	231	72713G	0.00	2010
MOABU	ACTUALS	6095	231	72713G	0.00	2010
MOABU	ACTUALS	6103	231	72713G	0.00	2010
MOABU	ACTUALS	6104	231	72713G	0.00	2010
MOABU	ACTUALS	6105	231	72713G	0.00	2010
MOABU	ACTUALS	6109	231	72713G	0.00	2010
MOABU	ACTUALS	6110	231	72713G	0.00	2010
MOABU	ACTUALS	6001	231	72756G	0.00	2010
MOABU	ACTUALS	6022	231	72756G	32.92	2010
MOABU	ACTUALS	6061	231	72756G	77.34	2010
MOABU	ACTUALS	6091	231	72756G	531.63	2010
MOABU	ACTUALS	6095	231	72756G	3,377.76	2010
MOABU	ACTUALS	6103	231	72756G	12,176.47	2010
MOABU	ACTUALS	6104	231	72756G	617.91	2010
MOABU	ACTUALS	6105	231	72756G	1,459.72	2010
MOABU	ACTUALS	6109	231	72756G	87.28	2010
MOABU	ACTUALS	6110	231	72756G	3,922.35	2010
MOABU	ACTUALS	6145	231	72756G	335.06	2010
MOABU	ACTUALS	6147	231	72756G	73.81	2010
MOABU	ACTUALS	6181	231	72756G	469.00	2010
MOABU	ACTUALS	6198	231	72756G	679.03	2010
MOABU	ACTUALS	6924	231	72756G	-7,335.53	2010
MOABU	ACTUALS	6001	401	7276	8,646.63	2010
MOABU	ACTUALS	6001	406	7306	3,724.55	2010
MOABU	ACTUALS	6001	101	7310	14,115.04	2010
MOABU	ACTUALS	6022	101	7310	941.28	2010
MOABU	ACTUALS	6023	101	7310	5,270.24	2010
MOABU	ACTUALS	6026	101	7310	7,925.99	2010
MOABU	ACTUALS	6029	101	7310	4.44	2010
MOABU	ACTUALS	6031	101	7310	18,488.24	2010
MOABU	ACTUALS	6037	101	7310	22,930.85	2010
MOABU	ACTUALS	6048	101	7310	49,195.98	2010
MOABU	ACTUALS	6049	101	7310	8,582.09	2010
MOABU	ACTUALS	6061	101	7310	11,117.23	2010
MOABU	ACTUALS	6064	101	7310	10,231.68	2010
MOABU	ACTUALS	6073	101	7310	31,356.13	2010
MOABU	ACTUALS	6079	101	7310	44,323.68	2010
MOABU	ACTUALS	6080	101	7310	45,731.04	2010
MOABU	ACTUALS	6081	101	7310	11,887.59	2010
MOABU	ACTUALS	6085	101	7310	4,517.51	2010
MOABU	ACTUALS	6086	101	7310	39,369.27	2010

IGC's Expenditures

Unit	Ledger	Acct	Fund	DeptID	Sum Total	Year
					Amt	
MOABU	ACTUALS	6088	101	7310	25,660.54	2010
MOABU	ACTUALS	6089	101	7310	36,472.89	2010
MOABU	ACTUALS	6091	101	7310	14,005.26	2010
MOABU	ACTUALS	6094	101	7310	5,487.92	2010
MOABU	ACTUALS	6095	101	7310	41,189.26	2010
MOABU	ACTUALS	6103	101	7310	56,788.59	2010
MOABU	ACTUALS	6104	101	7310	10,054.31	2010
MOABU	ACTUALS	6105	101	7310	3,837.36	2010
MOABU	ACTUALS	6110	101	7310	164,193.53	2010
MOABU	ACTUALS	6145	101	7310	2,165.21	2010
MOABU	ACTUALS	6147	101	7310	476.30	2010
MOABU	ACTUALS	6181	101	7310	11,795.44	2010
MOABU	ACTUALS	6198	101	7310	19,675.56	2010
MOABU	ACTUALS	6500	101	7310	56,755.06	2010
MOABU	ACTUALS	6666	101	7310	2,352.59	2010
MOABU	ACTUALS	6668	101	7310	62,962.80	2010
MOABU	ACTUALS	6971	101	7310	15,567.47	2010
MOABU	ACTUALS	6972	101	7310	7,096.19	2010
MOABU	ACTUALS	6973	101	7310	21,488.27	2010
MOABU	ACTUALS	6974	101	7310	15,885.00	2010
MOABU	ACTUALS	6975	101	7310	12,013.93	2010
MOABU	ACTUALS	6145	101	7320	5,590.56	2010
MOABU	ACTUALS	6147	101	7320	1,223.07	2010
MOABU	ACTUALS	6719	101	7320	122,810.39	2010
MOABU	ACTUALS	6720	101	7320	292,905.00	2010
MOABU	ACTUALS	6145	101	7321	2,947.18	2010
MOABU	ACTUALS	6147	101	7321	648.53	2010
MOABU	ACTUALS	6666	101	7321	3,212.47	2010
MOABU	ACTUALS	6668	101	7321	14,143.14	2010
MOABU	ACTUALS	6719	101	7321	61,405.22	2010
MOABU	ACTUALS	6721	101	7321	145,656.00	2010
MOABU	ACTUALS	6145	101	7322	1,474.41	2010
MOABU	ACTUALS	6147	101	7322	324.39	2010
MOABU	ACTUALS	6719	101	7322	61,405.19	2010
MOABU	ACTUALS	6722	101	7322	89,895.00	2010
MOABU	ACTUALS	6757	101	7322	14,437.54	2010
MOABU	ACTUALS	6001	101	7323	35,888.19	2010
MOABU	ACTUALS	6145	101	7323	1,350.70	2010
MOABU	ACTUALS	6147	101	7323	297.05	2010
MOABU	ACTUALS	6719	101	7323	61,405.21	2010
MOABU	ACTUALS	6731	101	7323	134,304.00	2010
MOABU	ACTUALS	6001	101	7324	42,485.65	2010
MOABU	ACTUALS	6022	101	7324	2.00	2010
MOABU	ACTUALS	6091	101	7324	39.00	2010
MOABU	ACTUALS	6095	101	7324	250.00	2010
MOABU	ACTUALS	6103	101	7324	904.00	2010
MOABU	ACTUALS	6104	101	7324	45.00	2010
MOABU	ACTUALS	6105	101	7324	108.00	2010
MOABU	ACTUALS	6109	101	7324	6.00	2010
MOABU	ACTUALS	6110	101	7324	291.00	2010
MOABU	ACTUALS	6145	101	7324	6,680.22	2010
MOABU	ACTUALS	6147	101	7324	1,469.37	2010
MOABU	ACTUALS	6719	101	7324	61,405.20	2010

IGC's Expenditures

Unit	Ledger	Acct	Fund	DeptID	Sum Total	Year
					Amt	
MOABU	ACTUALS	6725	101	7324	33,822.66	2010
MOABU	ACTUALS	6734	101	7324	486.00	2010
MOABU	ACTUALS	6736	101	7324	1,955.66	2010
MOABU	ACTUALS	6757	101	7324	121,175.98	2010
MOABU	ACTUALS	6778	101	7324	316.68	2010
MOABU	ACTUALS	6145	101	7326	1,131.39	2010
MOABU	ACTUALS	6147	101	7326	248.70	2010
MOABU	ACTUALS	6717	101	7326	12,480.00	2010
MOABU	ACTUALS	6719	101	7326	61,405.19	2010
MOABU	ACTUALS	6001	101	7331	99,316.17	2010
MOABU	ACTUALS	6145	101	7331	2,870.07	2010
MOABU	ACTUALS	6147	101	7331	631.43	2010
MOABU	ACTUALS	6666	101	7331	638,038.87	2010
MOABU	ACTUALS	6719	101	7331	122,810.40	2010
MOABU	ACTUALS	6145	101	7340	2,617.03	2010
MOABU	ACTUALS	6147	101	7340	575.74	2010
MOABU	ACTUALS	6719	101	7340	61,405.22	2010
MOABU	ACTUALS	6735	101	7340	78,894.00	2010
MOABU	ACTUALS	6001	101	7360	9,773.54	2010
MOABU	ACTUALS	6145	101	7360	17,206.25	2010
MOABU	ACTUALS	6147	101	7360	3,785.37	2010
MOABU	ACTUALS	6719	101	7360	552,646.77	2010
MOABU	ACTUALS	6736	101	7360	767,087.00	2010
MOABU	ACTUALS	6774	101	7360	1,670.20	2010
MOABU	ACTUALS	6001	101	7390	71,148.51	2010
MOABU	ACTUALS	6109	101	7390	111,096.84	2010
MOABU	ACTUALS	6145	101	7390	4,435.49	2010
MOABU	ACTUALS	6147	101	7390	975.62	2010
MOABU	ACTUALS	6719	101	7390	61,405.21	2010
MOABU	ACTUALS	6732	101	7390	403,643.75	2010
MOABU	ACTUALS	6022	101	7410	781.99	2010
MOABU	ACTUALS	6023	101	7410	22,586.68	2010
MOABU	ACTUALS	6026	101	7410	2,874.40	2010
MOABU	ACTUALS	6029	101	7410	41.26	2010
MOABU	ACTUALS	6031	101	7410	6,704.85	2010
MOABU	ACTUALS	6037	101	7410	8,620.70	2010
MOABU	ACTUALS	6048	101	7410	35,770.61	2010
MOABU	ACTUALS	6049	101	7410	8,582.14	2010
MOABU	ACTUALS	6061	101	7410	88.04	2010
MOABU	ACTUALS	6064	101	7410	378.95	2010
MOABU	ACTUALS	6073	101	7410	10,710.65	2010
MOABU	ACTUALS	6079	101	7410	30,653.77	2010
MOABU	ACTUALS	6080	101	7410	2,577.56	2010
MOABU	ACTUALS	6081	101	7410	4,311.09	2010
MOABU	ACTUALS	6085	101	7410	377.80	2010
MOABU	ACTUALS	6086	101	7410	1,655.97	2010
MOABU	ACTUALS	6088	101	7410	950.39	2010
MOABU	ACTUALS	6089	101	7410	1,350.85	2010
MOABU	ACTUALS	6091	101	7410	5,265.17	2010
MOABU	ACTUALS	6094	101	7410	203.24	2010
MOABU	ACTUALS	6095	101	7410	3,169.64	2010
MOABU	ACTUALS	6103	101	7410	18,172.32	2010
MOABU	ACTUALS	6104	101	7410	513.07	2010

IGC's Expenditures

Unit	Ledger	Acct	Fund	DeptID	Sum Total	Year
					Amt	
MOABU	ACTUALS	6105	101	7410	4,052.14	2010
MOABU	ACTUALS	6110	101	7410	13,154.48	2010
MOABU	ACTUALS	6145	101	7410	1,829.42	2010
MOABU	ACTUALS	6147	101	7410	751.23	2010
MOABU	ACTUALS	6181	101	7410	436.86	2010
MOABU	ACTUALS	6198	101	7410	728.75	2010
MOABU	ACTUALS	6500	101	7410	445,031.74	2010
MOABU	ACTUALS	6666	101	7410	4,826.86	2010
MOABU	ACTUALS	6668	101	7410	21,250.45	2010
MOABU	ACTUALS	6762	101	7410	740,014.48	2010
MOABU	ACTUALS	6774	101	7410	2,505.33	2010
MOABU	ACTUALS	6971	101	7410	5,852.51	2010
MOABU	ACTUALS	6972	101	7410	262.81	2010
MOABU	ACTUALS	6973	101	7410	8,078.40	2010
MOABU	ACTUALS	6974	101	7410	5,425.99	2010
MOABU	ACTUALS	6975	101	7410	1,995.61	2010
MOABU	ACTUALS	6001	101	7429	631.05	2010
MOABU	ACTUALS	6026	101	7429	899.66	2010
MOABU	ACTUALS	6029	101	7429	0.00	2010
MOABU	ACTUALS	6031	101	7429	2,098.53	2010
MOABU	ACTUALS	6037	101	7429	2,157.74	2010
MOABU	ACTUALS	6048	101	7429	570.46	2010
MOABU	ACTUALS	6061	101	7429	352.14	2010
MOABU	ACTUALS	6064	101	7429	1,515.80	2010
MOABU	ACTUALS	6073	101	7429	3,548.09	2010
MOABU	ACTUALS	6080	101	7429	2,540.23	2010
MOABU	ACTUALS	6081	101	7429	1,349.31	2010
MOABU	ACTUALS	6085	101	7429	2,812.92	2010
MOABU	ACTUALS	6088	101	7429	3,801.56	2010
MOABU	ACTUALS	6089	101	7429	5,403.39	2010
MOABU	ACTUALS	6091	101	7429	1,317.84	2010
MOABU	ACTUALS	6094	101	7429	813.02	2010
MOABU	ACTUALS	6104	101	7429	1,355.05	2010
MOABU	ACTUALS	6105	101	7429	75.45	2010
MOABU	ACTUALS	6110	101	7429	1,316.62	2010
MOABU	ACTUALS	6145	101	7429	15,196.42	2010
MOABU	ACTUALS	6147	101	7429	21,795.36	2010
MOABU	ACTUALS	6181	101	7429	1,747.47	2010
MOABU	ACTUALS	6198	101	7429	2,914.90	2010
MOABU	ACTUALS	6971	101	7429	1,464.86	2010
MOABU	ACTUALS	6972	101	7429	1,051.29	2010
MOABU	ACTUALS	6973	101	7429	2,022.01	2010
MOABU	ACTUALS	6974	101	7429	1,797.44	2010
MOABU	ACTUALS	6001	141	7430	1,315.35	2010
MOABU	ACTUALS	6026	141	7430	22,754.87	2010
MOABU	ACTUALS	6029	141	7430	0.40	2010
MOABU	ACTUALS	6031	141	7430	53,078.17	2010
MOABU	ACTUALS	6037	141	7430	53,830.93	2010
MOABU	ACTUALS	6048	141	7430	8,343.22	2010
MOABU	ACTUALS	6061	141	7430	5,150.12	2010
MOABU	ACTUALS	6064	141	7430	22,168.66	2010
MOABU	ACTUALS	6073	141	7430	7,663.09	2010
MOABU	ACTUALS	6080	141	7430	28,456.13	2010

IGC's Expenditures

Unit	Ledger	Acct	Fund	DeptID	Sum Total	Year
					Amt	
MOABU	ACTUALS	6081	141	7430	34,128.25	2010
MOABU	ACTUALS	6085	141	7430	9,119.47	2010
MOABU	ACTUALS	6088	141	7430	55,597.83	2010
MOABU	ACTUALS	6089	141	7430	79,024.62	2010
MOABU	ACTUALS	6091	141	7430	32,877.78	2010
MOABU	ACTUALS	6094	141	7430	11,890.48	2010
MOABU	ACTUALS	6095	141	7430	19,485.66	2010
MOABU	ACTUALS	6104	141	7430	18,931.18	2010
MOABU	ACTUALS	6105	141	7430	6,188.53	2010
MOABU	ACTUALS	6110	141	7430	29,832.06	2010
MOABU	ACTUALS	6145	141	7430	265,354.90	2010
MOABU	ACTUALS	6147	141	7430	380,927.52	2010
MOABU	ACTUALS	6181	141	7430	25,556.78	2010
MOABU	ACTUALS	6198	141	7430	42,630.43	2010
MOABU	ACTUALS	6666	141	7430	159,164.28	2010
MOABU	ACTUALS	6668	141	7430	516,746.25	2010
MOABU	ACTUALS	6741	141	7430	259,502.17	2010
MOABU	ACTUALS	6774	141	7430	67,643.11	2010
MOABU	ACTUALS	6971	141	7430	36,545.27	2010
MOABU	ACTUALS	6972	141	7430	15,375.06	2010
MOABU	ACTUALS	6973	141	7430	50,444.57	2010
MOABU	ACTUALS	6974	141	7430	3,882.10	2010
MOABU	ACTUALS	6975	141	7430	65,804.92	2010
MOABU	ACTUALS	6741	148	7431	5,310.00	2010
MOABU	ACTUALS	6741	121	7432	1,900.00	2010
MOABU	ACTUALS	6741	142	7433	11,230.00	2010
MOABU	ACTUALS	6741	143	7434	72,400.00	2010
MOABU	ACTUALS	6001	144	7435	302.65	2010
MOABU	ACTUALS	6741	144	7435	5,357.35	2010
MOABU	ACTUALS	6741	145	7436	9,150.00	2010
MOABU	ACTUALS	6001	146	7437	60.49	2010
MOABU	ACTUALS	6741	146	7437	2,039.51	2010
MOABU	ACTUALS	6741	147	7438	2,690.00	2010
MOABU	ACTUALS	6741	122	7439	50.00	2010
MOABU	ACTUALS	6001	149	7440	242.11	2010
MOABU	ACTUALS	6741	149	7440	60,477.89	2010
MOABU	ACTUALS	6741	111	7441	28,500.00	2010
MOABU	ACTUALS	6741	112	7442	20,600.00	2010
MOABU	ACTUALS	6001	113	7443	120.98	2010
MOABU	ACTUALS	6741	113	7443	13,079.02	2010
MOABU	ACTUALS	6741	114	7444	3,730.00	2010
MOABU	ACTUALS	6741	115	7445	1,630.00	2010
MOABU	ACTUALS	6741	116	7446	1,880.00	2010
MOABU	ACTUALS	6741	117	7447	3,690.00	2010
MOABU	ACTUALS	6001	118	7448	131.81	2010
MOABU	ACTUALS	6741	118	7448	15,968.19	2010
MOABU	ACTUALS	6026	119	7449	4,075.07	2010
MOABU	ACTUALS	6029	119	7449	0.01	2010
MOABU	ACTUALS	6031	119	7449	9,505.51	2010
MOABU	ACTUALS	6037	119	7449	8,304.43	2010
MOABU	ACTUALS	6048	119	7449	285.23	2010
MOABU	ACTUALS	6061	119	7449	176.08	2010
MOABU	ACTUALS	6064	119	7449	757.89	2010

IGC's Expenditures

Unit	Ledger	Acct	Fund	DeptID	Sum Total	Year
					Amt	
MOABU	ACTUALS	6080	119	7449	2,080.58	2010
MOABU	ACTUALS	6081	119	7449	6,111.89	2010
MOABU	ACTUALS	6085	119	7449	807.90	2010
MOABU	ACTUALS	6088	119	7449	1,900.78	2010
MOABU	ACTUALS	6089	119	7449	2,701.69	2010
MOABU	ACTUALS	6091	119	7449	5,072.04	2010
MOABU	ACTUALS	6094	119	7449	406.51	2010
MOABU	ACTUALS	6095	119	7449	4,105.22	2010
MOABU	ACTUALS	6104	119	7449	526.25	2010
MOABU	ACTUALS	6105	119	7449	1,486.18	2010
MOABU	ACTUALS	6110	119	7449	4,566.20	2010
MOABU	ACTUALS	6145	119	7449	11,592.37	2010
MOABU	ACTUALS	6147	119	7449	16,659.77	2010
MOABU	ACTUALS	6181	119	7449	873.71	2010
MOABU	ACTUALS	6198	119	7449	1,457.44	2010
MOABU	ACTUALS	6547	119	7449	30,000.00	2010
MOABU	ACTUALS	6668	119	7449	47,403.02	2010
MOABU	ACTUALS	6741	119	7449	33,320.00	2010
MOABU	ACTUALS	6971	119	7449	5,637.79	2010
MOABU	ACTUALS	6972	119	7449	525.65	2010
MOABU	ACTUALS	6973	119	7449	7,782.02	2010
MOABU	ACTUALS	6975	119	7449	8,752.51	2010
MOABU	ACTUALS	6001	105	7450	604.97	2010
MOABU	ACTUALS	6026	105	7450	302.02	2010
MOABU	ACTUALS	6031	105	7450	704.58	2010
MOABU	ACTUALS	6037	105	7450	827.56	2010
MOABU	ACTUALS	6080	105	7450	147.95	2010
MOABU	ACTUALS	6081	105	7450	453.03	2010
MOABU	ACTUALS	6091	105	7450	505.42	2010
MOABU	ACTUALS	6095	105	7450	354.88	2010
MOABU	ACTUALS	6110	105	7450	841.71	2010
MOABU	ACTUALS	6741	105	7450	26,847.00	2010
MOABU	ACTUALS	6971	105	7450	561.81	2010
MOABU	ACTUALS	6973	105	7450	775.50	2010
MOABU	ACTUALS	6741	123	7451	5,690.00	2010
MOABU	ACTUALS	6001	124	7452	60.55	2010
MOABU	ACTUALS	6741	124	7452	3,709.45	2010
MOABU	ACTUALS	6741	125	7453	1,350.00	2010
MOABU	ACTUALS	6741	126	7456	5,500.00	2010
MOABU	ACTUALS	6001	106	7460	17.82	2010
MOABU	ACTUALS	6026	106	7460	850.41	2010
MOABU	ACTUALS	6031	106	7460	1,983.67	2010
MOABU	ACTUALS	6037	106	7460	2,339.39	2010
MOABU	ACTUALS	6080	106	7460	127.88	2010
MOABU	ACTUALS	6081	106	7460	1,275.45	2010
MOABU	ACTUALS	6091	106	7460	1,428.81	2010
MOABU	ACTUALS	6105	106	7460	650.19	2010
MOABU	ACTUALS	6110	106	7460	1,127.27	2010
MOABU	ACTUALS	6741	106	7460	53,390.00	2010
MOABU	ACTUALS	6971	106	7460	1,588.20	2010
MOABU	ACTUALS	6973	106	7460	2,192.24	2010
MOABU	ACTUALS	6026	141	7470	5,284.17	2010
MOABU	ACTUALS	6031	141	7470	12,325.85	2010

IGC's Expenditures

Unit	Ledger	Acct	Fund	DeptID	Sum Total	Year
					Amt	
MOABU	ACTUALS	6037	141	7470	16,944.24	2010
MOABU	ACTUALS	6048	141	7470	71.30	2010
MOABU	ACTUALS	6061	141	7470	44.02	2010
MOABU	ACTUALS	6064	141	7470	189.49	2010
MOABU	ACTUALS	6080	141	7470	2,307.17	2010
MOABU	ACTUALS	6081	141	7470	7,925.28	2010
MOABU	ACTUALS	6088	141	7470	475.19	2010
MOABU	ACTUALS	6089	141	7470	675.41	2010
MOABU	ACTUALS	6091	141	7470	10,348.86	2010
MOABU	ACTUALS	6094	141	7470	101.64	2010
MOABU	ACTUALS	6095	141	7470	37,680.88	2010
MOABU	ACTUALS	6105	141	7470	2,130.56	2010
MOABU	ACTUALS	6110	141	7470	12,874.92	2010
MOABU	ACTUALS	6145	141	7470	953.38	2010
MOABU	ACTUALS	6147	141	7470	1,380.55	2010
MOABU	ACTUALS	6181	141	7470	218.42	2010
MOABU	ACTUALS	6198	141	7470	364.37	2010
MOABU	ACTUALS	6666	141	7470	811.24	2010
MOABU	ACTUALS	6668	141	7470	2,633.78	2010
MOABU	ACTUALS	6741	141	7470	55,213.23	2010
MOABU	ACTUALS	6971	141	7470	11,503.24	2010
MOABU	ACTUALS	6972	141	7470	131.41	2010
MOABU	ACTUALS	6973	141	7470	15,878.29	2010
MOABU	ACTUALS	6975	141	7470	335.39	2010
MOABU	ACTUALS	6026	129	7472	316.81	2010
MOABU	ACTUALS	6031	129	7472	739.01	2010
MOABU	ACTUALS	6037	129	7472	653.59	2010
MOABU	ACTUALS	6080	129	7472	581.80	2010
MOABU	ACTUALS	6081	129	7472	475.17	2010
MOABU	ACTUALS	6091	129	7472	399.20	2010
MOABU	ACTUALS	6095	129	7472	8,912.12	2010
MOABU	ACTUALS	6105	129	7472	737.25	2010
MOABU	ACTUALS	6110	129	7472	5,122.30	2010
MOABU	ACTUALS	6741	129	7472	5,521.31	2010
MOABU	ACTUALS	6971	129	7472	443.70	2010
MOABU	ACTUALS	6973	129	7472	612.48	2010
MOABU	ACTUALS	6037	119	7473	8,275.14	2010
MOABU	ACTUALS	6091	119	7473	5,054.11	2010
MOABU	ACTUALS	6971	119	7473	5,617.90	2010
MOABU	ACTUALS	6973	119	7473	7,754.55	2010
MOABU	ACTUALS	6022	101	7510	72.41	2010
MOABU	ACTUALS	6023	101	7510	25,598.23	2010
MOABU	ACTUALS	6026	101	7510	9,428.03	2010
MOABU	ACTUALS	6029	101	7510	12,194.59	2010
MOABU	ACTUALS	6031	101	7510	21,991.88	2010
MOABU	ACTUALS	6037	101	7510	32,727.64	2010
MOABU	ACTUALS	6048	101	7510	82,027.77	2010
MOABU	ACTUALS	6049	101	7510	8,582.11	2010
MOABU	ACTUALS	6061	101	7510	2,905.20	2010
MOABU	ACTUALS	6064	101	7510	12,505.40	2010
MOABU	ACTUALS	6073	101	7510	25,037.63	2010
MOABU	ACTUALS	6079	101	7510	64,207.25	2010
MOABU	ACTUALS	6080	101	7510	30,564.45	2010

IGC's Expenditures

Unit	Ledger	Acct	Fund	DeptID	Sum Total	Year
					Amt	
MOABU	ACTUALS	6081	101	7510	14,140.37	2010
MOABU	ACTUALS	6085	101	7510	3,942.12	2010
MOABU	ACTUALS	6086	101	7510	27,697.37	2010
MOABU	ACTUALS	6088	101	7510	31,362.89	2010
MOABU	ACTUALS	6089	101	7510	44,577.99	2010
MOABU	ACTUALS	6091	101	7510	19,988.76	2010
MOABU	ACTUALS	6094	101	7510	6,707.45	2010
MOABU	ACTUALS	6095	101	7510	18,162.96	2010
MOABU	ACTUALS	6103	101	7510	18,172.35	2010
MOABU	ACTUALS	6104	101	7510	15,448.19	2010
MOABU	ACTUALS	6105	101	7510	6,705.18	2010
MOABU	ACTUALS	6110	101	7510	80,285.60	2010
MOABU	ACTUALS	6145	101	7510	6,868.14	2010
MOABU	ACTUALS	6147	101	7510	9,911.04	2010
MOABU	ACTUALS	6181	101	7510	14,416.64	2010
MOABU	ACTUALS	6198	101	7510	24,047.94	2010
MOABU	ACTUALS	6500	101	7510	66,664.69	2010
MOABU	ACTUALS	6668	101	7510	17,638.08	2010
MOABU	ACTUALS	6774	101	7510	4,175.48	2010
MOABU	ACTUALS	6971	101	7510	22,218.48	2010
MOABU	ACTUALS	6972	101	7510	8,673.11	2010
MOABU	ACTUALS	6973	101	7510	30,668.85	2010
MOABU	ACTUALS	6974	101	7510	12,684.07	2010
MOABU	ACTUALS	6975	101	7510	13,262.28	2010
MOABU	ACTUALS	6145	101	7520	1,114.74	2010
MOABU	ACTUALS	6147	101	7520	10,591.52	2010
MOABU	ACTUALS	6666	101	7520	63,555.03	2010
MOABU	ACTUALS	6751	101	7520	83,708.64	2010
MOABU	ACTUALS	6001	181	7530	243,782.08	2010
MOABU	ACTUALS	6085	181	7530	3,986.06	2010
MOABU	ACTUALS	6109	181	7530	31,527.76	2010
MOABU	ACTUALS	6145	181	7530	4,220.22	2010
MOABU	ACTUALS	6147	181	7530	34,951.15	2010
MOABU	ACTUALS	6666	181	7530	638,038.88	2010
MOABU	ACTUALS	6668	181	7530	17,445.54	2010
MOABU	ACTUALS	6751	181	7530	267,913.87	2010
MOABU	ACTUALS	6001	181	7540	37,309.04	2010
MOABU	ACTUALS	6085	181	7540	469.64	2010
MOABU	ACTUALS	6145	181	7540	1,463.32	2010
MOABU	ACTUALS	6147	181	7540	13,921.97	2010
MOABU	ACTUALS	6668	181	7540	8,828.13	2010
MOABU	ACTUALS	6751	181	7540	108,813.54	2010
MOABU	ACTUALS	6754	181	7540	225.00	2010
MOABU	ACTUALS	6145	101	7542	503.10	2010
MOABU	ACTUALS	6147	101	7542	4,796.78	2010
MOABU	ACTUALS	6751	101	7542	41,815.81	2010
MOABU	ACTUALS	6145	101	7543	285.65	2010
MOABU	ACTUALS	6147	101	7543	2,721.21	2010
MOABU	ACTUALS	6751	101	7543	25,104.88	2010
MOABU	ACTUALS	6001	181	7552	134.02	2010
MOABU	ACTUALS	6085	181	7552	98.17	2010
MOABU	ACTUALS	6145	181	7552	737.96	2010
MOABU	ACTUALS	6147	181	7552	7,047.73	2010

IGC's Expenditures

Unit	Ledger	Acct	Fund	DeptID	Sum Total	Year
					Amt	
MOABU	ACTUALS	6668	181	7552	19,639.85	2010
MOABU	ACTUALS	6751	181	7552	100,419.57	2010
MOABU	ACTUALS	6001	101	7560	904.94	2010
MOABU	ACTUALS	6075	101	7560	33,703.29	2010
MOABU	ACTUALS	6085	101	7560	897.85	2010
MOABU	ACTUALS	6109	101	7560	15,154.38	2010
MOABU	ACTUALS	6145	101	7560	1,277.93	2010
MOABU	ACTUALS	6147	101	7560	12,260.48	2010
MOABU	ACTUALS	6570	101	7560	120.00	2010
MOABU	ACTUALS	6668	101	7560	7,487.57	2010
MOABU	ACTUALS	6751	101	7560	108,813.57	2010
MOABU	ACTUALS	6768	101	7560	396,528.75	2010
MOABU	ACTUALS	6145	181	7570	535.99	2010
MOABU	ACTUALS	6147	181	7570	5,111.19	2010
MOABU	ACTUALS	6668	181	7570	788.37	2010
MOABU	ACTUALS	6751	181	7570	33,498.87	2010
MOABU	ACTUALS	6085	441	7655	148.50	2010
MOABU	ACTUALS	6080	141	7671	210.66	2010
MOABU	ACTUALS	6095	141	7671	250.02	2010
MOABU	ACTUALS	6001	441	7672	2,285.98	2010
MOABU	ACTUALS	6022	101	7710	333.60	2010
MOABU	ACTUALS	6023	101	7710	3,011.58	2010
MOABU	ACTUALS	6026	101	7710	7,030.76	2010
MOABU	ACTUALS	6029	101	7710	0.17	2010
MOABU	ACTUALS	6031	101	7710	16,399.98	2010
MOABU	ACTUALS	6037	101	7710	19,483.91	2010
MOABU	ACTUALS	6048	101	7710	51,816.16	2010
MOABU	ACTUALS	6049	101	7710	8,582.08	2010
MOABU	ACTUALS	6061	101	7710	3,836.64	2010
MOABU	ACTUALS	6064	101	7710	9,663.25	2010
MOABU	ACTUALS	6073	101	7710	8,296.96	2010
MOABU	ACTUALS	6079	101	7710	44,323.70	2010
MOABU	ACTUALS	6080	101	7710	20,382.79	2010
MOABU	ACTUALS	6081	101	7710	10,544.88	2010
MOABU	ACTUALS	6085	101	7710	1,745.93	2010
MOABU	ACTUALS	6086	101	7710	3,979.65	2010
MOABU	ACTUALS	6088	101	7710	24,234.94	2010
MOABU	ACTUALS	6089	101	7710	34,446.60	2010
MOABU	ACTUALS	6091	101	7710	12,451.00	2010
MOABU	ACTUALS	6094	101	7710	5,183.04	2010
MOABU	ACTUALS	6095	101	7710	13,723.63	2010
MOABU	ACTUALS	6103	101	7710	22,942.53	2010
MOABU	ACTUALS	6104	101	7710	9,143.27	2010
MOABU	ACTUALS	6105	101	7710	2,442.89	2010
MOABU	ACTUALS	6109	101	7710	39.00	2010
MOABU	ACTUALS	6110	101	7710	51,612.85	2010
MOABU	ACTUALS	6145	101	7710	8,409.07	2010
MOABU	ACTUALS	6147	101	7710	11,996.43	2010
MOABU	ACTUALS	6181	101	7710	11,140.14	2010
MOABU	ACTUALS	6198	101	7710	18,582.50	2010
MOABU	ACTUALS	6500	101	7710	49,548.06	2010
MOABU	ACTUALS	6668	101	7710	4,577.53	2010
MOABU	ACTUALS	6757	101	7710	5,057.96	2010

IGC's Expenditures

Unit	Ledger	Acct	Fund	DeptID	Sum Total	Year
					Amt	
MOABU	ACTUALS	6774	101	7710	4,342.52	2010
MOABU	ACTUALS	6971	101	7710	13,227.41	2010
MOABU	ACTUALS	6972	101	7710	6,701.94	2010
MOABU	ACTUALS	6973	101	7710	18,258.20	2010
MOABU	ACTUALS	6974	101	7710	4,203.24	2010
MOABU	ACTUALS	6975	101	7710	22,231.45	2010
MOABU	ACTUALS	6772	101	7711	436,136.84	2010
MOABU	ACTUALS	6773	101	7711	381,843.32	2010
MOABU	ACTUALS	6775	101	7711	1,391,675.34	2010
MOABU	ACTUALS	6778	101	7711	921,558.67	2010
MOABU	ACTUALS	6779	101	7711	1,368,076.74	2010
MOABU	ACTUALS	6145	101	7720	2,589.88	2010
MOABU	ACTUALS	6147	101	7720	6,741.84	2010
MOABU	ACTUALS	6668	101	7720	4,101.64	2010
MOABU	ACTUALS	6001	231	772010G	663,209.90	2010
MOABU	ACTUALS	6022	231	772010G	55.00	2010
MOABU	ACTUALS	6091	231	772010G	887.00	2010
MOABU	ACTUALS	6095	231	772010G	5,620.00	2010
MOABU	ACTUALS	6103	231	772010G	20,260.00	2010
MOABU	ACTUALS	6104	231	772010G	1,028.00	2010
MOABU	ACTUALS	6105	231	772010G	2,430.00	2010
MOABU	ACTUALS	6109	231	772010G	146.00	2010
MOABU	ACTUALS	6110	231	772010G	6,525.00	2010
MOABU	ACTUALS	6001	231	77209G	-736.23	2010
MOABU	ACTUALS	6001	231	77214G	0.00	2010
MOABU	ACTUALS	6145	231	77214G	208.17	2010
MOABU	ACTUALS	6147	231	77214G	370.97	2010
MOABU	ACTUALS	6001	231	77216G	50.00	2010
MOABU	ACTUALS	6145	231	77216G	651.30	2010
MOABU	ACTUALS	6147	231	77216G	1,734.44	2010
MOABU	ACTUALS	6001	231	77217G	-2,131.29	2010
MOABU	ACTUALS	6022	231	77217G	-11.00	2010
MOABU	ACTUALS	6061	231	77217G	-12.00	2010
MOABU	ACTUALS	6091	231	77217G	-79.00	2010
MOABU	ACTUALS	6095	231	77217G	-252.00	2010
MOABU	ACTUALS	6103	231	77217G	-865.00	2010
MOABU	ACTUALS	6105	231	77217G	-130.00	2010
MOABU	ACTUALS	6109	231	77217G	-7.00	2010
MOABU	ACTUALS	6110	231	77217G	-264.00	2010
MOABU	ACTUALS	6001	231	77239G	10,254.51	2010
MOABU	ACTUALS	6022	231	77239G	8.00	2010
MOABU	ACTUALS	6061	231	77239G	103.00	2010
MOABU	ACTUALS	6091	231	77239G	139.00	2010
MOABU	ACTUALS	6095	231	77239G	884.00	2010
MOABU	ACTUALS	6103	231	77239G	3,187.00	2010
MOABU	ACTUALS	6104	231	77239G	298.00	2010
MOABU	ACTUALS	6105	231	77239G	382.00	2010
MOABU	ACTUALS	6109	231	77239G	22.00	2010
MOABU	ACTUALS	6110	231	77239G	1,026.00	2010
MOABU	ACTUALS	6145	231	77239G	420.60	2010
MOABU	ACTUALS	6147	231	77239G	1,087.89	2010
MOABU	ACTUALS	6181	231	77239G	627.00	2010
MOABU	ACTUALS	6198	231	77239G	907.00	2010

IGC's Expenditures

Unit	Ledger	Acct	Fund	DeptID	Sum Total	Year
					Amt	
MOABU	ACTUALS	6022	231	77249G	-15.00	2010
MOABU	ACTUALS	6061	231	77249G	-104.00	2010
MOABU	ACTUALS	6091	231	77249G	-551.00	2010
MOABU	ACTUALS	6095	231	77249G	-916.00	2010
MOABU	ACTUALS	6103	231	77249G	-4,013.00	2010
MOABU	ACTUALS	6105	231	77249G	-620.00	2010
MOABU	ACTUALS	6109	231	77249G	-39.00	2010
MOABU	ACTUALS	6110	231	77249G	-1,526.00	2010
MOABU	ACTUALS	6001	231	77279G	16,025.10	2010
MOABU	ACTUALS	6022	231	772810G	16.00	2010
MOABU	ACTUALS	6091	231	772810G	255.00	2010
MOABU	ACTUALS	6095	231	772810G	1,617.00	2010
MOABU	ACTUALS	6103	231	772810G	5,831.00	2010
MOABU	ACTUALS	6105	231	772810G	699.00	2010
MOABU	ACTUALS	6109	231	772810G	42.00	2010
MOABU	ACTUALS	6110	231	772810G	1,878.00	2010
MOABU	ACTUALS	6001	231	77288G	8,176.98	2010
MOABU	ACTUALS	6001	401	7730	6,138.23	2010
MOABU	ACTUALS	6145	401	7730	409.91	2010
MOABU	ACTUALS	6147	401	7730	1,091.31	2010
MOABU	ACTUALS	6001	441	7731	22,038.29	2010
MOABU	ACTUALS	6001	101	7740	42,199.27	2010
MOABU	ACTUALS	6109	101	7740	405.78	2010
MOABU	ACTUALS	6145	101	7740	8,323.08	2010
MOABU	ACTUALS	6147	101	7740	21,655.36	2010
MOABU	ACTUALS	6622	101	7740	34,140.00	2010
MOABU	ACTUALS	6668	101	7740	19,547.24	2010
MOABU	ACTUALS	6757	101	7740	8.73	2010
MOABU	ACTUALS	6771	101	7740	151,784.83	2010
MOABU	ACTUALS	6145	141	7750	4,865.82	2010
MOABU	ACTUALS	6147	141	7750	12,742.00	2010
MOABU	ACTUALS	6666	141	7750	26,699.38	2010
MOABU	ACTUALS	6668	141	7750	63,010.71	2010
MOABU	ACTUALS	6757	141	7750	102.22	2010
MOABU	ACTUALS	6771	141	7750	142,856.27	2010
MOABU	ACTUALS	6774	141	7750	8,351.01	2010
MOABU	ACTUALS	6775	141	7750	2,400.00	2010
MOABU	ACTUALS	6001	441	7754	53,623.52	2010
MOABU	ACTUALS	6145	141	7760	2,141.19	2010
MOABU	ACTUALS	6147	141	7760	5,603.74	2010
MOABU	ACTUALS	6771	141	7760	138,392.05	2010
MOABU	ACTUALS	6773	141	7760	712.50	2010
MOABU	ACTUALS	6145	141	7770	1,797.32	2010
MOABU	ACTUALS	6147	141	7770	4,681.13	2010
MOABU	ACTUALS	6771	141	7770	138,392.02	2010
MOABU	ACTUALS	6772	141	7770	2,618.75	2010
MOABU	ACTUALS	6001	141	7780	7,075.36	2010
MOABU	ACTUALS	6145	141	7780	3,873.28	2010
MOABU	ACTUALS	6147	141	7780	10,135.00	2010
MOABU	ACTUALS	6666	141	7780	124,621.45	2010
MOABU	ACTUALS	6668	141	7780	15,229.42	2010
MOABU	ACTUALS	6757	141	7780	21,378.02	2010
MOABU	ACTUALS	6771	141	7780	160,713.37	2010

IGC's Expenditures

Unit	Ledger	Acct	Fund	DeptID	Sum Total	Year
					Amt	
MOABU	ACTUALS	6778	141	7780	28,588.00	2010
MOABU	ACTUALS	6109	141	7790	4,133.59	2010
MOABU	ACTUALS	6145	141	7790	7,840.02	2010
MOABU	ACTUALS	6147	141	7790	20,368.53	2010
MOABU	ACTUALS	6622	141	7790	44,460.00	2010
MOABU	ACTUALS	6666	141	7790	8,112.33	2010
MOABU	ACTUALS	6668	141	7790	19,145.21	2010
MOABU	ACTUALS	6757	141	7790	255.53	2010
MOABU	ACTUALS	6771	141	7790	160,713.32	2010
MOABU	ACTUALS	6774	141	7790	4,342.52	2010
MOABU	ACTUALS	6779	141	7790	46,414.50	2010
MOABU	ACTUALS	6898	141	7790	25,200.00	2010

2010 Expend - GAAP - ICP Units
Unallowable Costs

Unit	Ledger	Acct	Fund	DeptID	Sum Total Amt	Year
MOABU	ACTUALS	5201	451	1705	33,303.61	2,010
MOABU	ACTUALS	5301	451	1705	159,645.00	2,010
MOABU	ACTUALS	5302	441	7005	55,239.01	2,010
MOABU	ACTUALS	5201	441	7006	13,308.00	2,010
MOABU	ACTUALS	5302	441	7006	48,495.05	2,010
MOABU	ACTUALS	3804	441	7007	344.00	2,010
MOABU	ACTUALS	5302	441	7007	6,275,685.63	2,010
MOABU	ACTUALS	5401	441	7007	15,846.78	2,010
MOABU	ACTUALS	5412	441	7007	0.00	2,010
MOABU	ACTUALS	3804	441	7008	142.00	2,010
MOABU	ACTUALS	3815	441	7008	26,195.04	2,010
MOABU	ACTUALS	5302	441	7008	4,764,942.31	2,010
MOABU	ACTUALS	5411	441	7008	0.00	2,010
MOABU	ACTUALS	5605	441	7008	6,995.21	2,010
MOABU	ACTUALS	5302	441	7009	6,589,167.13	2,010
MOABU	ACTUALS	5401	441	7009	11,001.17	2,010
MOABU	ACTUALS	5603	441	7009	707.88	2,010
MOABU	ACTUALS	5302	441	7010	5,701,253.30	2,010
MOABU	ACTUALS	5401	441	7010	0.00	2,010
MOABU	ACTUALS	5302	419	7190	533,022.59	2,010
MOABU	ACTUALS	5302	419	7192	0.00	2,010
MOABU	ACTUALS	5302	419	7199	1,212,989.96	2,010
MOABU	ACTUALS	5302	461	7202	20,108.00	2,010
MOABU	ACTUALS	5412	441	7251	4,112.00	2,010
MOABU	ACTUALS	3804	441	7252	-20.00	2,010
MOABU	ACTUALS	5302	441	7252	-450.00	2,010
MOABU	ACTUALS	3804	441	7253	150.00	2,010
MOABU	ACTUALS	5302	441	7253	17,634,007.64	2,010
MOABU	ACTUALS	5302	441	7254	393,174.32	2,010
MOABU	ACTUALS	3815	409	7262	517.00	2,010
MOABU	ACTUALS	5302	409	7262	1,784,466.62	2,010
MOABU	ACTUALS	5302	409	7271	1.93	2,010
MOABU	ACTUALS	3804	401	7276	102.00	2,010
MOABU	ACTUALS	5302	401	7276	83,102.68	2,010
MOABU	ACTUALS	5201	441	7278	-13,308.00	2,010
MOABU	ACTUALS	5302	420	7286	39,000.00	2,010
MOABU	ACTUALS	5302	406	7306	16,865.00	2,010
MOABU	ACTUALS	5603	101	7310	169.98	2,010
MOABU	ACTUALS	5603	101	7321	425.28	2,010
MOABU	ACTUALS	3111	101	7324	786.00	2,010
MOABU	ACTUALS	3804	101	7324	20.00	2,010
MOABU	ACTUALS	5302	101	7324	450.00	2,010
MOABU	ACTUALS	5412	101	7324	20,128.22	2,010
MOABU	ACTUALS	5603	101	7324	1,540.00	2,010
MOABU	ACTUALS	5605	101	7324	139.99	2,010
MOABU	ACTUALS	5603	101	7410	667.93	2,010
MOABU	ACTUALS	5604	101	7410	196.01	2,010
MOABU	ACTUALS	3111	141	7430	150.00	2,010
MOABU	ACTUALS	3901	141	7430	12,663.54	2,010
MOABU	ACTUALS	5411	141	7430	32,311.75	2,010
MOABU	ACTUALS	5412	141	7430	3,350.00	2,010
MOABU	ACTUALS	5603	141	7430	6,683.99	2,010
MOABU	ACTUALS	5604	141	7430	1,021.96	2,010

2010 Expend - GAAP - ICP Units
Unallowable Costs

MOABU	ACTUALS	3901	121	7432	111,586.00	2,010
MOABU	ACTUALS	3901	122	7439	2,223.00	2,010
MOABU	ACTUALS	5302	149	7440	0.00	2,010
MOABU	ACTUALS	5602	119	7449	2,097.00	2,010
MOABU	ACTUALS	5603	119	7449	1,685.94	2,010
MOABU	ACTUALS	3901	105	7450	40,000.00	2,010
MOABU	ACTUALS	3901	119	7473	3,316,948.00	2,010
MOABU	ACTUALS	3804	101	7520	885.04	2,010
MOABU	ACTUALS	3901	181	7530	507,250.00	2,010
MOABU	ACTUALS	4106	181	7540	11,557.63	2,010
MOABU	ACTUALS	5411	181	7540	3,261.75	2,010
MOABU	ACTUALS	5604	101	7542	166.72	2,010
MOABU	ACTUALS	5604	101	7543	15.21	2,010
MOABU	ACTUALS	3804	101	7560	268.77	2,010
MOABU	ACTUALS	5411	101	7560	347.89	2,010
MOABU	ACTUALS	5604	101	7560	60.84	2,010
MOABU	ACTUALS	3804	181	7570	180.00	2,010
MOABU	ACTUALS	3111	401	7591	750.00	2,010
MOABU	ACTUALS	5411	401	7591	21,105.15	2,010
MOABU	ACTUALS	5604	401	7591	4,616.29	2,010
MOABU	ACTUALS	4101	141	7671	12,581,369.23	2,010
MOABU	ACTUALS	4102	141	7671	15,887,827.11	2,010
MOABU	ACTUALS	4103	141	7671	5,191.26	2,010
MOABU	ACTUALS	4112	141	7671	18,347.00	2,010
MOABU	ACTUALS	4113	141	7671	8,936.60	2,010
MOABU	ACTUALS	5302	441	7672	2,500.00	2,010
MOABU	ACTUALS	5605	101	7710	618.78	2,010
MOABU	ACTUALS	5604	231	772010G	882.20	2,010
MOABU	ACTUALS	3815	231	77224G	345.00	2,010
MOABU	ACTUALS	3815	231	77255G	128.00	2,010
MOABU	ACTUALS	3815	231	77288G	0.00	2,010
MOABU	ACTUALS	5412	401	7730	35,000.00	2,010
MOABU	ACTUALS	5603	401	7730	1,356.00	2,010
MOABU	ACTUALS	5302	441	7731	53,998.84	2,010
MOABU	ACTUALS	5411	101	7740	2,440.20	2,010
MOABU	ACTUALS	5603	101	7740	8,588.57	2,010
MOABU	ACTUALS	5604	101	7740	1,256.64	2,010
MOABU	ACTUALS	5401	141	7750	12,322.53	2,010
MOABU	ACTUALS	5411	141	7750	2,952.75	2,010
MOABU	ACTUALS	5412	141	7750	0.00	2,010
MOABU	ACTUALS	5603	141	7750	594.00	2,010
MOABU	ACTUALS	5604	141	7750	139.99	2,010
MOABU	ACTUALS	5302	441	7754	129,464.00	2,010
MOABU	ACTUALS	5401	441	7754	0.00	2,010
MOABU	ACTUALS	5604	141	7770	196.00	2,010
MOABU	ACTUALS	5412	141	7780	0.00	2,010
MOABU	ACTUALS	5401	141	7790	14,084.52	2,010
MOABU	ACTUALS	5603	141	7790	26,681.18	2,010

PUBLIC WORKS DEPARTMENTS

- 2012 -

INDIRECT COST PROPOSAL

TABLE OF CONTENTS

DESCRIPTION

PAGE

INTRAGOVERNMENTAL CHARGE-OUT METHODOLOGIES

INTRAGOVERNMENTAL CHARGES METHODOLOGIES

DEPARTMENT NAME: Development Services

CONTACT: Barbara M. Corliss

DIVISION NAME: Administration Division

TELEPHONE: 343-8317

BUDGET UNIT (DEPTID NUMBER AND NAME): 7510 Development Services Administration

APPROVED BY: _____

(Signature of Department Director)

SERVICES PROVIDED:

Guides and directs department's activities, and manages the department's resources, budgets, and personnel.

BUDGET PREPARATION METHODOLOGY:

Budgeted amounts are based upon an annual review of actual time spent in support of department activities, management duties, and technical support.

CHARGE-OUT METHODOLOGY:

☐ Allocating

☐ Non-allocating

☒ Combination

The percentages developed during budget preparation are indexed in the cost allocation tables of the financial information system. Each month, the system automatically applies the percentages to the total expenditures for this unit and allocates the costs to the various units.

Costs not automatically allocated by the system are charged to the budget unit requesting service by journal entry or through the work authorization feature of the financial information system.

REVISION DATE: March 16, 2004

OMB DIRECTOR SIGNATURE: _____

G:\Development Services\Administration\BUDGET\GC Methodologies\7510 Administration, 3-2004.doc

2004

INTRAGOVERNMENTAL CHARGES METHODOLOGIES

DEPARTMENT NAME: Development Services

CONTACT: Barbara M. Corliss

DIVISION NAME: Building Safety Division

TELEPHONE: 343-8317

BUDGET UNIT (DEPTID NUMBER AND NAME): 7530 Building Inspection

APPROVED BY: _____

(Signature of Department Director)

SERVICES PROVIDED:

Performs inspections on new and remodeled building construction to ensure compliance with municipal codes.

BUDGET PREPARATION METHODOLOGY:

Budgeted amounts are based on a review of prior year activity, adjusted for known requirements, and entered into the budget preparation system as a flat amount.

CHARGE-OUT METHODOLOGY:

☐ Allocating

☒ Non-allocating

☐ Combination

Charges are computed in accordance with the established fee schedule. Actual charges are accumulated on time cards as the events occur. Each month, the actual charges are transferred to the budget unit requesting service by journal entry or through the work authorization feature of the financial information system.

REVISION DATE: March 16, 2004

OMB DIRECTOR SIGNATURE: _____

2004

INTRAGOVERNMENTAL CHARGES METHODOLOGIES

DEPARTMENT NAME: Development Services

CONTACT: Barbara M. Corliss

DIVISION NAME: Building Safety Division

TELEPHONE: 343-8317

BUDGET UNIT (DEPTID NUMBER AND NAME): 7540 Plan Review

APPROVED BY: _____

(Signature of Department Director)

SERVICES PROVIDED:

Reviews building plans for compliance with building codes and land use regulations.

BUDGET PREPARATION METHODOLOGY:

Budgeted amounts are based on a review of prior year activity, adjusted for known requirements, and entered into the budget preparation system as a flat amount.

CHARGE-OUT METHODOLOGY:

☐ Allocating

☒ Non-allocating

☐ Combination

Charges are computed in accordance with the established fee schedule. Actual charges are accumulated on time cards as the events occur. Each month, the actual charges are transferred to the budget unit requesting service by journal entry or through the work authorization feature of the financial information system.

REVISION DATE: March 16, 2004

OMB DIRECTOR SIGNATURE: _____

2004

INTRAGOVERNMENTAL CHARGES METHODOLOGIES

DEPARTMENT NAME: Development Services

CONTACT: Barbara M. Corliss

DIVISION NAME: Building Safety Division

TELEPHONE: 343-8317

BUDGET UNIT (DEPTID NUMBER AND NAME): 7542 On-Site Water/Wastewater

APPROVED BY: _____

(Signature of Department Director)

SERVICES PROVIDED:

Manages the design, construction, and operation of on-site water and wastewater disposal systems through permit and inspection activities, and inspections for the federal NPDES program.

BUDGET PREPARATION METHODOLOGY:

Budgeted amounts are based on the prior year's activity, adjusted for known requirements. The remaining costs of the unit are not charged out, and remain as areawide tax costs.

CHARGE-OUT METHODOLOGY:

☐ Allocating

☒ Non-allocating

☐ Combination

Charges are computed in accordance with the established fee schedule. Actual charges are accumulated on time cards as the events occur. Each month, the actual charges are transferred to the budget unit requesting service by journal entry or through the work authorization feature of the financial information system.

REVISION DATE: March 16, 2004

OMB DIRECTOR SIGNATURE: _____

2004

INTRAGOVERNMENTAL CHARGES METHODOLOGIES

DEPARTMENT NAME: Development Services

CONTACT: Barbara M. Corliss

DIVISION NAME: Building Safety Division

TELEPHONE: 343-8317

BUDGET UNIT (DEPTID NUMBER AND NAME): 7543 Land Use Plan Review

APPROVED BY: _____

(Signature of Department Director)

SERVICES PROVIDED:

Review building and land use permits for conformance to Title 21 land use regulations.

BUDGET PREPARATION METHODOLOGY:

Budgeted amounts are based on the prior year's activity, adjusted for known requirements. The remaining costs of the unit are not charged out, and remain as areawide tax costs.

CHARGE-OUT METHODOLOGY:

☐ Allocating

☒ Non-allocating

☐ Combination

Charges are computed in accordance with the established fee schedule. Actual charges are accumulated on time cards as the events occur. Each month, the actual charges are transferred to the budget unit requesting service by journal entry or through the work authorization feature of the financial information system.

REVISION DATE: March 16, 2004

OMB DIRECTOR SIGNATURE: _____

2004

INTRAGOVERNMENTAL CHARGES METHODOLOGIES

DEPARTMENT NAME: Development Services

CONTACT: Barbara M. Corliss

DIVISION NAME: Building Safety Division

TELEPHONE: 343-86317

BUDGET UNIT (DEPTID NUMBER AND NAME): 7552 Permit Counter and Plans Coordination

APPROVED BY: _____

(Signature of Department Director)

SERVICES PROVIDED:

The Permit Counter accepts and processes all building and land use permits, and maintains records of activities for all building and land use activity. The Permit Counter also accepts and processes all cash or credit card transactions for departments within the Permit & Development Center building.

BUDGET PREPARATION METHODOLOGY:

Budgeted amounts are based on prior year permit and inspection activity and the financial transaction activity of other departments within the Permit & Development Center building, adjusted for known requirements.

CHARGE-OUT METHODOLOGY:

☐ Allocating

☐ Non-allocating

☒ Combination

The percentages developed during budget preparation are indexed in the cost allocation tables of the financial information system. Each month, the system automatically applies the percentages to the total expenditures for this unit, and allocates the costs to the various units.

Costs not automatically allocated by the system are charged to the budget unit requesting service by journal entry or through the work authorization feature of the financial information system.

REVISION DATE: March 16, 2004

OMB DIRECTOR SIGNATURE: _____

2004

INTRAGOVERNMENTAL CHARGES METHODOLOGIES

DEPARTMENT NAME: Development Services

CONTACT: Barbara M. Corliss

DIVISION NAME: Right-of-Way Division

TELEPHONE: 343-86317

BUDGET UNIT (DEPTID NUMBER AND NAME): 7560 Right-of-Way

APPROVED BY: _____

(Signature of Department Director)

SERVICES PROVIDED:

Issues permits and provides inspection and enforcement in the Municipal right-of-way.

BUDGET PREPARATION METHODOLOGY:

Budgeted amounts are based on prior year actual charges, adjusted for any known requirements. The remaining costs of the unit are not charged out, and remain as area-wide tax costs.

CHARGE-OUT METHODOLOGY:

☐ Allocating

☒ Non-allocating

☐ Combination

Charges are computed in accordance with the established fee schedule. Actual charges are accumulated on time cards as the events occur. Each month, the actual charges are transferred to the budget unit requesting service by journal entry or through the work authorization feature of the financial information system.

REVISION DATE: March 16, 2004

OMB DIRECTOR SIGNATURE: _____

G:\Development Services\Administration\BUDGET\IGC Methodologies\7560 Right-of-Way, 3-2004.doc

2007

INTRAGOVERNMENTAL CHARGES METHODOLOGIES

DEPARTMENT NAME: Development Services

CONTACT: Barbara M. Corliss

DIVISION NAME: Building Safety Division

TELEPHONE: 343-8317

BUDGET UNIT (DEPTID NUMBER AND NAME): 7570 Code Abatement

APPROVED BY: _____

(Signature of Department Director)

SERVICES PROVIDED:

Provides code compliance inspections on existing structures as requested and for business license applications, and reviews and approves applications for demolition of existing structures.

BUDGET PREPARATION METHODOLOGY:

Budgeted amounts are based upon a review of prior year activity, adjusted for known requirements. The remaining costs of the unit are not charged out, and remain as tax costs to the Building Safety Service Area (fund 181).

CHARGE-OUT METHODOLOGY:

☐ Allocating

☒ Non-allocating

☐ Combination

Charges are computed in accordance with the established fee schedule. Actual charges are accumulated on time cards as the events occur. Each month, the actual charges are transferred to the budget unit requesting service by journal entry or through the work authorization feature of the financial information system.

REVISION DATE: March 16, 2004

OMB DIRECTOR SIGNATURE: _____

2004

INTRAGOVERNMENTAL CHARGES METHODOLOGIES


DEPARTMENT NAME: Project Management and Engineering

CONTACT: Robert Moore

DIVISION NAME: Project Management and Engineering Administration TELEPHONE: 343-8180

BUDGET UNIT (DEPTID NUMBER AND NAME): 7310 - Project Management and Engineering Administration

APPROVED BY:



(Signature of Department Director)

SERVICES PROVIDED:

Provides department administration and capital program coordination. This unit also provides clerical support to the department.

BUDGET PREPARATION METHODOLOGY:

Budgeted amounts are based upon an annual review of work performed for the various units in the Project Management and Engineering Department. A percentage allocation is set for each unit.

CHARGE-OUT METHODOLOGY:

☒ Allocating

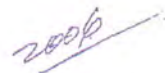
☐ Non-allocating

☐ Combination

The percentages developed during budget preparation are indexed in the cost allocation tables of the financial information system. Each month the system automatically applies the percentages to the total expenditures for this unit and allocates the cost to the various units.

REVISION DATE: _____

OMB DIRECTOR SIGNATURE: _____



INTRAGOVERNMENTAL CHARGES METHODOLOGIES

DEPARTMENT NAME: Project Management and Engineering

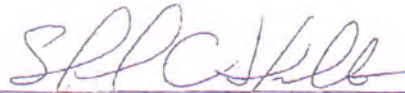
CONTACT: Robert Moore

DIVISION NAME: Project Technical Support

TELEPHONE: 343-8180

BUDGET UNIT (DEPTID NUMBER AND NAME): 7320 - Project Technical Support

APPROVED BY: _____


(Signature of Department Director)

SERVICES PROVIDED:

Provides development, design, and administration of capital projects, reviews plats and plans.

BUDGET PREPARATION METHODOLOGY:

Budgeted amounts are based upon estimate of time spent on services to each area. Estimates are based on the complexity of the projects through historical data.

CHARGE-OUT METHODOLOGY:

☐ Allocating

☒ Non-allocating

☐ Combination

Actual charges are accumulated as the job progresses, by timecards, voucher checks, vehicle utilization forms and material issue slips. Each month, the actual charges are transferred to the budget unit requesting the service through the work authorization feature of the financial information system.

REVISION DATE: _____

OMB DIRECTOR SIGNATURE: _____

2006

INTRAGOVERNMENTAL CHARGES METHODOLOGIES

DEPARTMENT NAME: Project Management and Engineering

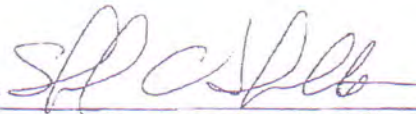
CONTACT: Robert Moore

DIVISION NAME: Geotechnical Survey

TELEPHONE: 343-8180

BUDGET UNIT (DEPTID NUMBER AND NAME): 7321 - Geotechnical Survey

APPROVED BY: _____



(Signature of Department Director)

SERVICES PROVIDED:

Provides soils testing and quality control testing on capital projects and maintains a soils library.

BUDGET PREPARATION METHODOLOGY:

Budgeted amounts are based upon estimate of time spent on services to each area. Estimates are based on the complexity of the projects through historical data.

CHARGE-OUT METHODOLOGY:

☐ Allocating

☒ Non-allocating

☐ Combination

Actual charges are accumulated as the job progresses, by timecards, voucher checks, vehicle utilization forms and material issue slips. Each month, the actual charges are transferred to the budget unit requesting the service through the work authorization feature of the financial information system.

REVISION DATE: _____

OMB DIRECTOR SIGNATURE: _____

2006

INTRAGOVERNMENTAL CHARGES METHODOLOGIES

DEPARTMENT NAME: Project Management and Engineering

CONTACT: Robert Moore

DIVISION NAME: Survey

TELEPHONE: 343-8180

BUDGET UNIT (DEPTID NUMBER AND NAME): 7322 - Survey

APPROVED BY: 

(Signature of Department Director)

SERVICES PROVIDED:

Provides surveys, specifications for construction projects, and maps. Reviews survey documents for compliance to municipal survey standards for capital improvement projects.

BUDGET PREPARATION METHODOLOGY:

Budgeted amounts are based upon an estimate of time spent on survey and administration of capital improvement projects. Estimates are based on the complexity of the projects through historical data a

CHARGE-OUT METHODOLOGY:

☐ Allocating

☒ Non-allocating

☐ Combination

Actual charges are accumulated as the job progresses, by timecards, voucher checks, vehicle utilization forms and material issue slips. Each month, the actual charges are transferred to the budget unit requesting the services through the work authorization feature of the financial information system..

REVISION DATE: _____

OMB DIRECTOR SIGNATURE: _____

2006

INTRAGOVERNMENTAL CHARGES METHODOLOGIES

DEPARTMENT NAME: Project Management and Engineering

CONTACT: Robert Moore

DIVISION NAME: Watershed Management

TELEPHONE: 343-8180

BUDGET UNIT (DEPTID NUMBER AND NAME): 7324 - Watershed Management

APPROVED BY: 

(Signature of Department Director)

SERVICES PROVIDED:

Provides management and oversight of watershed required by State and Federal Environmental Protection agencies for all projects managed by the Municipality. Manages the National Pollution Discharge Environment System for both the State and Municipality.

BUDGET PREPARATION METHODOLOGY:

Budgeted amounts are based upon an estimate of time spent in inspections of capital improvement projects.

CHARGE-OUT METHODOLOGY:

☐ Allocating

☒ Non-allocating

☐ Combination

Actual charges are accumulated as the job progresses, by timecards, voucher checks, vehicle utilization forms and material issue slips. Each month, the actual charges are transferred to the budget unit requesting the services through the work authorization feature of the financial information system.

REVISION DATE: _____

OMB DIRECTOR SIGNATURE: _____

2006

INTRAGOVERNMENTAL CHARGES METHODOLOGIES

DEPARTMENT NAME: Project Management and Engineering

CONTACT: Robert Moore

DIVISION NAME: Plan and Permit Center Bldg

TELEPHONE: 343-8180

BUDGET UNIT (DEPTID NUMBER AND NAME): 7325 - Plan and Permit Center Bldg

APPROVED BY: 

(Signature of Department Director)

SERVICES PROVIDED:

Provides property management and oversight of Planning and Development Center. Ensures PBX communications system is maintained and operational at all times.

BUDGET PREPARATION METHODOLOGY:

Budgeted amounts are based upon an actual cost of PBX communications contracted maintenance with ACS. Other contractual cost are based upon estimated work required.

CHARGE-OUT METHODOLOGY:

☐ Allocating

☒ Non-allocating

☐ Combination

Actual charges are accumulated as monthly invoices for maintenance are paid.

REVISION DATE: _____

OMB DIRECTOR SIGNATURE: _____

2006

INTRAGOVERNMENTAL CHARGES METHODOLOGIES

DEPARTMENT NAME: Project Management and Engineering

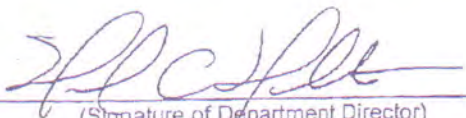
CONTACT: Robert Moore

DIVISION NAME: Program & Development

TELEPHONE: 343-8180

BUDGET UNIT (DEPTID NUMBER AND NAME): 7326 - Program & Development

APPROVED BY:


(Signature of Department Director)

SERVICES PROVIDED:

Provides capital program development of the capital improvement budget and Road Improvement Districts within the Municipality of Anchorage. Prepares schedules, project documents and general project reports.

BUDGET PREPARATION METHODOLOGY:

100 % of this division's costs are charged back to the capital improvement budget.

CHARGE-OUT METHODOLOGY:

☒ Allocating

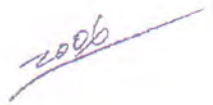
☐ Non-allocating

☐ Combination

The percentage developed during budget preparation are indexed in the cost allocation tables for the financial information system. The system automatically applies the percentages and allocates the cost to the proper capital improvement budget unit. This allocation is taken to a holding Project ID within the capital improvement budget and is prorated to current projects on an annualized basis.

REVISION DATE: _____

OMB DIRECTOR SIGNATURE: _____


2006

INTRAGOVERNMENTAL CHARGES METHODOLOGIES

DEPARTMENT NAME: Project Management and Engineering

CONTACT: Robert Moore

DIVISION NAME: Buildings Project Management

TELEPHONE: 343-8180

BUDGET UNIT (DEPTID NUMBER AND NAME): 7330 - Buildings Project Management

APPROVED BY:


(Signature of Department Director)

SERVICES PROVIDED:

Provides project management and inspection of capital improvement projects.

BUDGET PREPARATION METHODOLOGY:

Budgeted amounts are based upon an estimate of time spent in inspections and administration of capital improvement projects. Estimates are based on the complexity of the projects through historical data and total project dollars available for construction.

CHARGE-OUT METHODOLOGY:

☐ Allocating

☒ Non-allocating

☐ Combination

Actual charges are accumulated as the job progresses, by timecards, voucher checks, vehicle utilization forms and material issue slips. Each month, the actual charges are transferred to the budget unit requesting the service through the work authorization feature of the financial information system.

REVISION DATE: _____

OMB DIRECTOR SIGNATURE: _____



INTRAGOVERNMENTAL CHARGES METHODOLOGIES

DEPARTMENT NAME: Project Management and Engineering

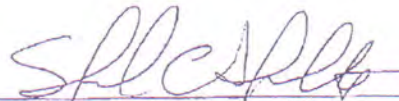
CONTACT: Robert Moore

DIVISION NAME: Project Administrative Support

TELEPHONE: 343-8180

BUDGET UNIT (DEPTID NUMBER AND NAME): 7331 - Project Administrative Support

APPROVED BY: _____


(Signature of Department Director)

SERVICES PROVIDED:

Provides management services, development of the capital improvement budget and control of the capital improvement projects. Tracks budgets and schedules, processes project documents and general project reports.

BUDGET PREPARATION METHODOLOGY:

100 % of this division's costs are charged back to the capital improvement budget.

CHARGE-OUT METHODOLOGY:

☒ Allocating

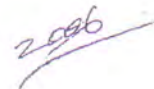
☐ Non-allocating

☐ Combination

The percentage developed during budget preparation are indexed in the cost allocation tables to the financial information system. The system automatically applies the percentages and allocates the cost to the proper capital improvement budget unit. This allocation is taken to a holding Project ID within the capital improvement budget and is prorated to current projects on an annualized basis.

REVISION DATE: _____

OMB DIRECTOR SIGNATURE: _____



INTRAGOVERNMENTAL CHARGES METHODOLOGIES

DEPARTMENT NAME: Project Management and Engineering

CONTACT: Robert Moore

DIVISION NAME: Parks and Trails Project Management

TELEPHONE: 343-8180

BUDGET UNIT (DEPTID NUMBER AND NAME): 7340 - Parks and Trails Project Management

APPROVED BY: _____


(Signature of Department Director)

SERVICES PROVIDED:

Provides project management and inspection of capital improvement projects for parks and trails.

BUDGET PREPARATION METHODOLOGY:

Budgeted amounts are based upon an estimate of time spent in inspections and administration of capital improvement projects. Estimates are based on the complexity of the projects through historical data and total project dollars available for construction.

CHARGE-OUT METHODOLOGY:

☐ Allocating

☒ Non-allocating

☐ Combination

Actual charges are accumulated as the job progresses, by timecards, voucher checks, vehicle utilization forms and material issue slips. Each month, the actual charges are transferred to the budget unit requesting the services through the work authorization feature of the financial information system..

REVISION DATE: _____

OMB DIRECTOR SIGNATURE: _____



INTRAGOVERNMENTAL CHARGES METHODOLOGIES

DEPARTMENT NAME: Project Management and Engineering

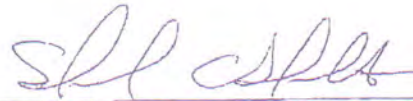
CONTACT: Robert Moore

DIVISION NAME: Roads and Drainage Project Management

TELEPHONE: 343-8180

BUDGET UNIT (DEPTID NUMBER AND NAME): 7360 - Roads and Drainage Project Management

APPROVED BY: _____



(Signature of Department Director)

SERVICES PROVIDED:

Provides project management and inspection of capital improvement projects for roads and drainage.

BUDGET PREPARATION METHODOLOGY:

Budgeted amounts are based upon an estimate of time spent in inspections and administration of capital improvement projects. Estimates are based on the complexity of the projects through historical data and total project dollars available for construction.

CHARGE-OUT METHODOLOGY:

☐ Allocating

☒ Non-allocating

☐ Combination

Actual charges are accumulated as the job progresses, by timecards, voucher checks, vehicle utilization forms and material issue slips. Each month, the actual charges are transferred to the budget unit requesting the services through the work authorization feature of the financial information system..

REVISION DATE: _____

OMB DIRECTOR SIGNATURE: _____

2006

INTRAGOVERNMENTAL CHARGES METHODOLOGIES

DEPARTMENT NAME: Project Management and Engineering

CONTACT: Robert Moore

DIVISION NAME: Private Development

TELEPHONE: 343-8180

BUDGET UNIT (DEPTID NUMBER AND NAME): 7390 - Private Development

APPROVED BY:

(Signature of Department Director)

SERVICES PROVIDED:

To assure that development of private subdivision improvements are constructed in accordance with municipal codes, the subdivision agreement, the appropriate design criteria standards and the current standard specifications adopted by the Department of Public Works. Provide technical support for reviewing plans for various other developments within Anchorage.

BUDGET PREPARATION METHODOLOGY:

Budgeted amounts are based upon an estimate of time spent in reviewing plans for various other developments within Anchorage.

CHARGE-OUT METHODOLOGY:

☐ Allocating

☒ Non-allocating

☐ Combination

Actual charges are accumulated as the job progresses, by timecards, voucher checks, vehicle utilization forms and material issue slips. Each month, the actual charges are transferred to the budget unit requesting the services through the work authorization feature of the financial information system.

REVISION DATE: _____

OMB DIRECTOR SIGNATURE: _____

2006

INTRAGOVERNMENTAL CHARGES METHODOLOGIES

DEPARTMENT NAME: Street Maintenance

CONTACT: Maurice Robinson

DIVISION NAME: Street Maintenance Administration

TELEPHONE: 343-8191

BUDGET UNIT (DEPTID NUMBER AND NAME): 7410 Street Maintenance Administration

APPROVED BY:


(Signature of Department Director)

SERVICES PROVIDED:

Provides supervision and administrative services to various Road, Drainage, Street Light, and Parks & Beautification Maintenance units.

BUDGET PREPARATION METHODOLOGY:

1. Budgeted amounts are based on an annual review of actual work performed in administrative support of Street Maintenance Operations, Street Light Maintenance, and Parks & Beautification Maintenance.
2. Rural Road Service Areas (RRSA) and Limited Road Service Areas (LRSA) may be charged an amount up to 12% of their budgeted function costs to cover administrative costs incurred by this unit (AMC 27.10.050 B.). This amount is calculated and reflected as a flat rate charge. Adjustments may be made at first quarter if function costs are materially affected by mill levy adjustments.

CHARGE-OUT METHODOLOGY:

☐ Allocating

☐ Non-allocating

☒ Combination

1. The percentages developed during budget preparation are indexed in the cost allocation tables of the financial information system. Each month the system automatically applies the percentages to the total expenditures for this unit and allocates the cost to the various units.
2. The charges to the Rural Road Service Areas and Limited Road Service Areas are manually billed through a journal entry.

REVISION DATE: 22 May 02

OMB DIRECTOR SIGNATURE: Cheryl Frasca

INTRAGOVERNMENTAL CHARGES METHODOLOGIES

DEPARTMENT NAME: Street Maintenance

CONTACT: Maurice Robinson

DIVISION NAME: Street Operations

TELEPHONE: 343-8191

BUDGET UNIT (DEPTID NUMBER AND NAME): 7430 Street Operations

APPROVED BY: *Maurice Robinson*

(Signature of Department Director)

SERVICES PROVIDED:

Provides snow removal, street sweeping and flushing, preventative maintenance for asphalt streets, road drainage systems, oil and grease separators, curbs, gutters and sidewalks. Support is also provided for Community Promotions and emergency services to other service areas.

BUDGET PREPARATION METHODOLOGY:

Budgeted amounts are based upon an estimate of time and materials used in supporting requesting departments. Estimates are based on prior year actuals adjusted for known changes in requirements.

CHARGE-OUT METHODOLOGY:

☐ Allocating

☒ Non-allocating

☐ Combination

Actual charges are monitored for each service request through timecards, voucher checks, vehicle utilization forms and material issue slips. The actual charges are transferred to the budget unit requesting the service through the work authorization feature of the financial information system.

Other charges not transferred through work authorization are manually charged to the requesting budget unit through a journal entry.

REVISION DATE: 22 May 02

OMB DIRECTOR SIGNATURE: *Cheryl Frasca*

INTRAGOVERNMENTAL CHARGES METHODOLOGIES

DEPARTMENT NAME: Street Maintenance

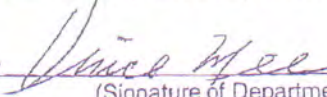
CONTACT: Maurice Robinson

DIVISION NAME: Section 6/Campbell Airstrip LRSA

TELEPHONE: 343-8191

BUDGET UNIT (DEPTID NUMBER AND NAME): 7442 Section6/Campbell Airstrip LRSA

APPROVED BY:



(Signature of Department Director)

SERVICES PROVIDED:

Responsible for maintenance of roads within Section 6/Campbell Airstrip Road LRSA.

BUDGET PREPARATION METHODOLOGY:

Budgeted amount is based upon a negotiated charge to Parks & Beautification Maintenance for public use access to municipal parklands from Campbell Airstrip Road.

CHARGE-OUT METHODOLOGY:

☐ Allocating

☒ Non-allocating

☐ Combination

The negotiated charge to Parks & Beautification Maintenance is manually billed through a journal entry.

REVISION DATE: 22 May 02

OMB DIRECTOR SIGNATURE: Cheryl Frasca

INTRAGOVERNMENTAL CHARGES METHODOLOGIES

DEPARTMENT NAME: Street Maintenance

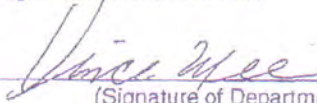
CONTACT: Maurice Robinson

DIVISION NAME: ER/Chugiak/Birchwood RRSA

TELEPHONE: 343-8191

BUDGET UNIT (DEPTID NUMBER AND NAME): 7449 Eagle River/Rural Road SA

APPROVED BY:



(Signature of Department Director)

SERVICES PROVIDED:

The Operations unit provides program and contract administration for year-round road maintenance and capital improvement programs within the Chugiak/Birchwood/Eagle River Rural Road Service Area (CBERRRSA).

BUDGET PREPARATION METHODOLOGY:

Budgeted amounts are based on an annual review of administrative support utilized in execution of the annual CBERRRSA Capital Improvement Program.

CHARGE-OUT METHODOLOGY:

☐ Allocating

☒ Non-allocating

☐ Combination

Actual charges are accumulated as the job progresses. The costs are then charged to the CBERRRSA Capital Improvement Program Fund through a journal entry.

REVISION DATE: 22 May 02

OMB DIRECTOR SIGNATURE: Cheryl Frasca

INTRAGOVERNMENTAL CHARGES METHODOLOGIES

DEPARTMENT NAME: Street Maintenance

CONTACT: Maurice Robinson

DIVISION NAME: Parks & Beautification Maintenance

TELEPHONE: 343-8191

BUDGET UNIT (DEPTID NUMBER AND NAME): 7480 Parks & Beautification Maintenance

APPROVED BY: *Vince Hlee*

(Signature of Department Director)

SERVICES PROVIDED:

Provides park maintenance and snow removal around municipal buildings and sites. Support is also provided for Community Promotions and emergency services to other service areas.

BUDGET PREPARATION METHODOLOGY:

Budgeted amounts are based upon an estimate of time and materials used in supporting requesting departments. Estimates are based on prior year actuals adjusted for known changes in requirements.

CHARGE-OUT METHODOLOGY:

☐ Allocating

☒ Non-allocating

☐ Combination

Actual charges are monitored for each service request through timecards, voucher checks, vehicle utilization forms and material issue slips. The actual charges are transferred to the budget unit requesting the service through the work authorization feature of the financial information system.

Other charges not transferred through work authorization are manually charged to the requesting budget unit through a journal entry.

REVISION DATE: 22 May 02

OMB DIRECTOR SIGNATURE: *Charles Frasca*

INTRAGOVERNMENTAL CHARGES METHODOLOGIES

DEPARTMENT NAME: Traffic Department

CONTACT: Renee Stewart

DIVISION NAME: Traffic Administration

TELEPHONE: 343-8478

BUDGET UNIT (DEPTID NUMBER AND NAME): 7710 Administration

APPROVED BY: _____

Renee Stewart
(Signature of Department Director)

SERVICES PROVIDED:

Provides administrative guidance, direction, budgetary and fiscal policy, clerical support, program administration and personnel functions for the Traffic Department.

BUDGET PREPARATION METHODOLOGY:

Budget amounts are based upon an annual review of actual work performed in support of department activities.

CHARGE-OUT METHODOLOGY:

☒ Allocating

☐ Non-allocating

☐ Combination

The percentages developed during budget preparation are indexed in the cost allocation tables of the financial information system. Each month, the system automatically applies the percentages to the total expenditures for this unit and allocates the cost to the various units.

REVISION DATE: _____

OMB DIRECTOR SIGNATURE: _____

2004

INTRAGOVERNMENTAL CHARGES METHODOLOGIES

DEPARTMENT NAME: Traffic Department

CONTACT: Renee Stewart

DIVISION NAME: Transportation Planning

TELEPHONE: 343-8478

BUDGET UNIT (DEPTID NUMBER AND NAME): 7720 Transportation Planning

APPROVED BY: _____

[Signature]
(Signature of Department Director)

SERVICES PROVIDED:

Manages and promotes the Anchorage Metropolitan Area Transportation ^{Solutions} ~~Study~~ (AMATS) through cooperative, coordinated and comprehensive planning process. This unit executes the tasks specified in the current year AMATS Unified Work Program. Tasks include annual documentation required to maintain eligibility for Federal assistance for road, transit, bike/pedestrian and air quality improvements.

BUDGET PREPARATION METHODOLOGY:

Budgeted amounts are based on actual time spent during the prior year as recorded on timecards and adjusted for known requirements. The remaining costs of the unit are not charged out and remain as areawide tax costs.

CHARGE-OUT METHODOLOGY:

☐ Allocating

☒ Non-allocating

☐ Combination

Actual time spent on the Unified Work Program tasks are recorded on timecards by work authorization. Each month, the actual charges are transferred to the appropriate grant budget unit through the work authorization feature of the financial information system.

REVISION DATE: _____

OMB DIRECTOR SIGNATURE: _____

2004

INTRAGOVERNMENTAL CHARGES METHODOLOGIES

DEPARTMENT NAME: Traffic Department

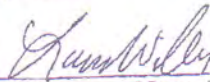
CONTACT: Renee Stewart

DIVISION NAME: Communications

TELEPHONE: 343-8478

BUDGET UNIT (DEPTID NUMBER AND NAME): 7740 Communications

APPROVED BY: _____



(Signature of Department Director)

SERVICES PROVIDED:

Provides radio communications installation, maintenance, repair, upgrade and inventory for all general government communications and paging equipment, mobile/stationary wireline and wireless systems, public safety radio/microwave sites and systems, radio fire alarm maintenance, trunked radio systems, and FCC licenses. This unit includes 24-hour emergency services for all radio systems/agencies, and emergency dispatch center maintenance for Anchorage Fire Department, Anchorage Police Department, and Office of Emergency Management. This unit also provides installation, maintenance and repair for all general government video and audio systems, fire station alerting and ancillary electronic devices. Additional services provided include uninterruptible power systems maintenance and repair, calibration and maintenance/repair of electronic biomedical equipment, public safety project management for all Municipal radio communications projects, and technical advisory services for purchase of radio equipment and wireless systems.

BUDGET PREPARATION METHODOLOGY:

Previous year amounts are calculated in percentages of total Direct Budget and then applied to Total Budget. These amounts are adjusted for respective agencies anticipating unusual requests for services not considered regular maintenance i.e. major radio system upgrades, dispatch center relocation, etc. Once these adjustments are included by adding cost estimates, percentages are recalculated for all using agencies to determine final percentage of contribution to fund the total work program. A three to five year history is considered for each IGC account to identify trends in demand for services.

CHARGE-OUT METHODOLOGY:

☐ Allocating

☐ Non-allocating

☒ Combination

The percentages developed during budget preparation are indexed in the cost allocation tables of the financial information system. Each month, the system automatically applies the percentages to the total expenditures for this unit and allocates the costs to the various units.

Unanticipated and unbudgeted requests for special projects/work outside the normal routine operations are funded during the current budget year by the requesting department. Funds are committed by the requesting department from current operating budgets, grants, bonds or other approved sources.

Provision is made for third party billing to certain quasi-Municipal agencies who use Municipal radio systems. These monies are treated as revenue, and serve to reduce the contribution required of tax-supported agencies.

REVISION DATE: _____

OMB DIRECTOR SIGNATURE: _____



INTRAGOVERNMENTAL CHARGES METHODOLOGIES

DEPARTMENT NAME: Traffic Department

CONTACT: Renee Stewart

DIVISION NAME: Paint and Sign

TELEPHONE: 343-8478

BUDGET UNIT (DEPTID NUMBER AND NAME): 7750 Paint & Sign

APPROVED BY: _____

(Signature of Department Director)

SERVICES PROVIDED:

Provides the manufacturing, installation and maintenance of all traffic control regulatory and non-regulatory signage on Municipal roadways; the painting of pedestrian and school crosswalks; the painting of lane control markings; and the striping on Municipal roadways and State of Alaska intersections. The service area encompasses Anchorage, Eagle River, and Girdwood.

BUDGET PREPARATION METHODOLOGY:

Budgeted amounts are based on prior year actuals and adjusted for known changes. Estimates include time and material utilized to support requesting units.

CHARGE-OUT METHODOLOGY:

☐ Allocating

☒ Non-allocating

☐ Combination

Costs for labor and materials are recorded and tracked on timecards and with the utilization project IDs as the work program progresses. Each month these costs are billed to the requesting budget unit through the work authorization feature of the financial information system.

Unanticipated and unbudgeted requests for special projects/work outside the normal routine operations are funded during the current budget year by the requesting department. Funds are committed by the requesting department from current operating budgets, grants, bonds or other approved sources.

REVISION DATE: 1/15

OMB DIRECTOR SIGNATURE: _____

2004

INTRAGOVERNMENTAL CHARGES METHODOLOGIES

DEPARTMENT NAME: Traffic Department

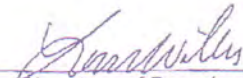
CONTACT: Renee Stewart

DIVISION NAME: Traffic Engineering

TELEPHONE: 343-8478

BUDGET UNIT (DEPTID NUMBER AND NAME): 7760 Data Section

APPROVED BY: _____


(Signature of Department Director)

SERVICES PROVIDED:

Collects, analyzes and publishes traffic data to include accident and traffic volume counts for various internal and external agencies including the Anchorage Metropolitan Area Transportation Study (AMATS). Publishes the Annual Traffic Report per AMC Title 9. Provides data coordination with the State of Alaska for the annual Highway Safety Improvement Program.

BUDGET PREPARATION METHODOLOGY:

The budgeted amounts to be charged to the Anchorage Metropolitan Area Transportation Study are established by the AMATS Unified Work Program. The remaining budgeted amounts are based upon prior year actuals for each agency and/or project serviced and adjusted for known changes. Estimates include time and material utilized to support the requesting units.

CHARGE-OUT METHODOLOGY:

☐ Allocating

☒ Non-allocating

☐ Combination

Costs for labor and materials are recorded and tracked on timecards and with project IDs as the work program progresses. Each month these costs are billed to the requesting budget unit through the work authorization feature of the financial information system.

Unanticipated and unbudgeted requests for special projects/work outside normal routine operations are funded during the current budget year by the requesting department. Funds are committed by the requesting department from current operating budgets, grants, bonds or other approved sources.

REVISION DATE: _____

OMB DIRECTOR SIGNATURE: _____

2004

INTRAGOVERNMENTAL CHARGES METHODOLOGIES

DEPARTMENT NAME: Traffic Department

CONTACT: Renee Stewart

DIVISION NAME: Traffic Engineering

TELEPHONE: 343-8478

BUDGET UNIT (DEPTID NUMBER AND NAME): 7770 Signals Section

APPROVED BY: _____

Renee Stewart
(Signature of Department Director)

SERVICES PROVIDED:

Provides traffic signal operations and system timing (Traffic Management System-TMS) for traffic signals and flashers in Anchorage, Eagle River, and Girdwood. Maintains, installs, upgrades, and inspects Municipal and State traffic signals and school flashers area-wide. Provides project plan review for traffic signals, illumination and related improvements.

BUDGET PREPARATION METHODOLOGY:

Budgeted amounts are based on prior year actuals and adjusted for known changes. Estimates include time and material utilized to support requesting units.

CHARGE-OUT METHODOLOGY:

☐ Allocating

☒ Non-allocating

☐ Combination

Costs for labor and materials are recorded and tracked on timecards and with the utilization of project IDs as the work program progresses. Each month the actual charges are billed to the requesting budget unit through the work authorization feature of the financial information system.

Unanticipated and unbudgeted requests for special projects/work outside the normal routine operations are funded during the current budget year by the requesting department. Funds are committed by the requesting department from current operating budgets, grants, bonds or other approved sources.

REVISION DATE: _____

OMB DIRECTOR SIGNATURE: _____

2004

INTRAGOVERNMENTAL CHARGES METHODOLOGIES

DEPARTMENT NAME: Traffic Department

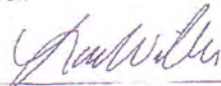
CONTACT: Renee Stewart

DIVISION NAME: Traffic Engineering

TELEPHONE: 343-8478

BUDGET UNIT (DEPTID NUMBER AND NAME): 7780 Safety Section

APPROVED BY: _____


(Signature of Department Director)

SERVICES PROVIDED:

Develops, reviews, and manages safety, traffic control and traffic calming projects. Investigates and approves all traffic control devices. Provides traffic plan review of platting, traffic impact analysis, and building permits. Reviews and approves all temporary traffic control plans for roadway improvements and special activities. Coordinates the Highway Safety Improvement Program. Provides Title 9 & 21 compliance.

BUDGET PREPARATION METHODOLOGY:

Budgeted amounts are based on prior year actuals and adjusted for known changes. Estimates include time and material utilized to support requesting units.

CHARGE-OUT METHODOLOGY:

☐ Allocating

☒ Non-allocating

☐ Combination

Costs for labor and materials are recorded and tracked on timecards and with the utilization of project IDs as the work program progresses. Each month the actual charges are billed to the requesting budget unit through the work authorization feature of the financial information system.

Unanticipated and unbudgeted requests for special projects/work outside the normal routine operations are funded during the current budget year by the requesting department. Funds are committed by the requesting department from current operating budgets, grants, bonds or other approved sources.

REVISION DATE: _____

OMB DIRECTOR SIGNATURE: _____

2004

INTRAGOVERNMENTAL CHARGES METHODOLOGIES

DEPARTMENT NAME: Traffic Department

CONTACT: Renee Stewart

DIVISION NAME: Traffic Engineering

TELEPHONE: 343-8478

BUDGET UNIT (DEPTID NUMBER AND NAME): 7790 Signal Maintenance

APPROVED BY: _____


(Signature of Department Director)

SERVICES PROVIDED:

Provides traffic signal inspection, technical support, installation, maintenance and construction support of State and Municipal traffic signals within the Anchorage Bowl including Eagle River and Girdwood.

BUDGET PREPARATION METHODOLOGY:

Budgeted amounts are based on prior year actuals and adjusted for known changes. Estimates include time and material utilized to support requesting units.

CHARGE-OUT METHODOLOGY:

☐ Allocating

☒ Non-allocating

☐ Combination

Costs for labor and materials are recorded and tracked on timecards and with the utilization of project IDs as the work program progresses. Each month the actual charges are billed to the requesting budget unit through the work authorization feature of the financial information system.

Unanticipated and unbudgeted requests for special projects/work outside the normal routine operations are funded during the current budget year by the requesting department. Funds are committed by the requesting department from current operating budgets, grants, bonds or other approved sources.

Provision is made for third party billing to certain quasi-Municipal agencies who use signal maintenance services. These monies are treated as revenue, and serve to reduce the contribution required of tax-supported agencies.

REVISION DATE: _____

OMB DIRECTOR SIGNATURE: _____

2504