

Municipality of Anchorage

— Alaska —

2012

**Department of
Health and Human Services**

Indirect Cost Proposal



Dan Sullivan
Mayor

Lucinda Mahoney
Chief Fiscal Officer

HEALTH AND HUMAN SERVICES

- 2012 -

INDIRECT COST PROPOSAL

TABLE OF CONTENTS

DESCRIPTION	PAGE
GENERAL INFORMATION	
Certification	1
Introduction	2
Federal Department of Health & Human Services letter dated August 19, 1986	3
Organizational Chart, 1/1/2010	4
INDIRECT COST RATES	
Cemetery	5
Community Health	6
Environmental Services	7
Human Services	8
2010 FINANCIAL INFORMATION	
Summary of Costs	9
Detail of Costs	12
Detail of Direct Intragovernmental Charges treated as Direct Costs	27
Detail of intragovernmental Charges From Central Service Plan	36
Detail of Unallowable Costs, Direct and Indirect	42
INTRAGOVERNMENTAL CHARGE-OUT METHODOLOGIES	

CERTIFICATE OF INDIRECT COSTS

This is to certify that I have reviewed the indirect cost proposal submitted herewith and to the best of my knowledge and belief:

- (1) All costs included in this proposal to establish billing or final indirect cost rates for the period January 1 through December 31, 2012 are allowable in accordance with the requirements of the Federal award(s) to which they apply and OMB Circular A-87, "Cost Principles for State and Local Governments." Unallowable costs have been adjusted for in allocating costs as indicated in the Central Services Plan.
- (2) All costs included in this proposal are properly allocable to Federal awards on the basis of a beneficial or a causal relationship between the expense incurred and the agreements to which they are allocated in accordance with applicable requirements. Further, the same costs that have been treated as indirect costs have not been claimed as direct costs. Similar types of costs have been accounted for consistently and the Federal Government will be notified of any accounting changes that would affect the predetermined rate.
- 3) All costs are reported on a GAAP basis for the most recent year completed, or Municipal fiscal year 2010, which is the calendar year 2010.

I declare the foregoing is true and correct

Ross Russell, ACTING CFO
(Signature)
Date: 3/12/2012

Lucinda Mahoney
Chief Fiscal Officer
Municipality of Anchorage
Anchorage, Alaska

William J. Wilks
(Signature)
Date: 12/31/11

William J. Wilks
Preparer
AKT LLP
800 East Diamond Road STE 3-670
Anchorage, Alaska

INTRODUCTION to INDIRECT COST PROPOSAL

This document presents the Indirect Cost Proposal for the Municipality of Anchorage's Department of Health and Human Services for the period January 1, 2012 through December 31, 2012. This proposal supports our department's claim to indirect costs on grants and contracts with Federal and State government agencies. Costs presented in this proposal are based on calendar year 2010 (CY10) actual expenses.

One indirect cost rate is developed for each division within the department. This percentage of indirect costs is computed based on total direct costs for the division. Since most grants with Municipal employee support are billed for that support through the Municipal IGCS (Intragovernmental Charge System) the salaries and benefits do not appear as identifiable salaries and benefits amounts upon which to calculate an indirect cost rate based on direct salaries or salaries and benefits.

Costs included in the indirect cost rates include intragovernmental charges from department and division administrative units. Indirect costs also include a share of the allocated central service units' costs as identified in the Municipality of Anchorage's 2012 Central Services Plan. In addition, intragovernmental charges from central service units, department and division charging units have been adjusted to subtract costs that are unallowable according to OMB Circular A-87, "Cost Principles for State and Local Governments."



DEPARTMENT OF HEALTH & HUMAN SERVICES

Office of the
Regional Director

Region X
M/S 202
2901 Third Avenue
Seattle, WA 98121

August 19, 1986

Mr. Bob Smith
Municipal Manager
Municipality of Anchorage
Pouch 6-650
Anchorage, Alaska 99502-0650

Dear Mr. Smith:

As the cognizant Federal agency, this is to inform you that future central services cost allocation plans and departmental/divisional indirect cost proposals will not have to be submitted for review by this office.

You are advised that central services cost allocation plans and departmental/divisional indirect cost proposals must be prepared in accordance with the appropriate Federal cost principles and available as of the time a claim is made against a Federal award. The documentation in support of the claim must be retained for a period of three years.

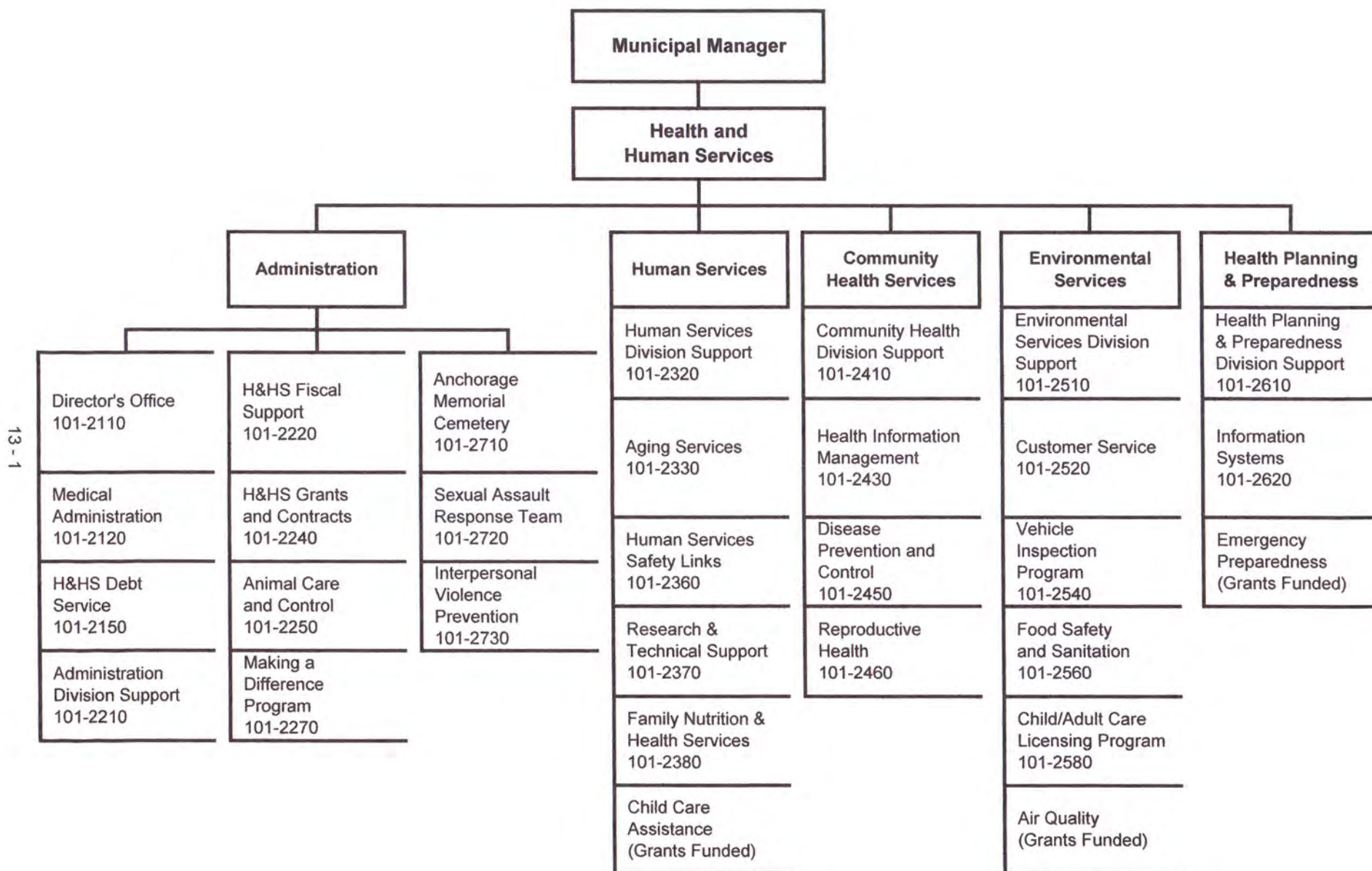
This policy will remain in effect until advised otherwise by this office or a newly designated cognizant Federal agency.

We remain available to answer technical questions or otherwise provide information consistent with the functions of this office.

Sincerely,

J. J. Latuseck
Director
Division of Cost Allocation

Health and Human Services



INDIRECT COST RATES

Cemetery	5
Community Health	6
Environmental Services	7
Human Services	8

INDIRECT COST RATE COMPUTATION

CEMETERY DIVISION

<u>COST ITEM</u>	<u>AMOUNT</u>
Actual Indirects	250,037
Allocation of Net Costs (over/underbilled costs) as Indirects From:	
DHHS Admin.	(365)
Mgmt Support Div.	(115)
Other Division Support Units	0
Total Indirects	<u>\$249,556</u>
Base (Total Direct)	<u><u>438,887</u></u>
2012 Rate	56.9%

INDIRECT COST RATE COMPUTATION

COMMUNITY HEALTH DIVISION

<u>COST ITEM</u>	<u>AMOUNT</u>
Actual Indirects	980,873
Allocation of Net Costs (over/underbilled costs) as Indirects From:	
DHHS Admin.	(731)
Mgmt Support Div.	(706)
Other Division Support Units	(4,713)
Total Indirects	<u>\$974,723</u>
Base (Total Direct)	<u><u>5,211,161</u></u>
2012 Rate	18.7%

INDIRECT COST RATE COMPUTATION

ENVIRONMENTAL SERVICES DIVISION

<u>COST ITEM</u>	<u>AMOUNT</u>
Actual Indirects	1,313,862
Allocation of Net Costs (over/underbilled costs) as Indirects From:	
DHHS Admin.	(731)
Mgmt Support Div.	(202)
Other Division Support Units	(959)
Total Indirects	<u>\$1,311,971</u>
Base (Total Direct)	<u><u>5,184,454</u></u>
2012 Rate	25.3%

INDIRECT COST RATE COMPUTATION

HUMAN SERVICES DIVISON

<u>COST ITEM</u>	<u>AMOUNT</u>
Actual Indirects	1,792,970
Allocation of Net Costs (over/underbilled costs) as Indirects From:	
DHHS Admin.	(731)
Mgmt Support Div.	(1,286)
Other Division Support Units	(974)
Total Indirects	<u>\$ 1,789,980</u>
Base (Total Direct)	<u>8,157,248</u>
2012 Rate	21.9%

2010 FINANCIAL INFORMATION

Summary of Costs	9
Detail of Costs	12
Detail of Direct Intragovernmental Charges treated as Direct Costs	27
Detail of intragovernmental Charges From Central Service Plan	36
Detail of Unallowable Costs, Direct and Indirect	42



**Municipality of Anchorage
Indirect Cost Proposal
Using Results as of December 31, 2010**

Dept ID	Description	Direct Expenditures	IGC Expenditures	Total Direct and IGC Expenditures	Total Billings (IGC) & Program Revenues	Net Costs	Adjustment for Billings to Non-Chargeout units	Net Costs, After Adj	Total Charges From Central Services Plan IGCs	Non-Allowable Expense Adj			Adjusted Net Allowable Costs	Allowable IGCs Treated as Indirect Costs	Allowable Directs
										% Not Allowable (from CSP)	From Central Services Plan	Within Unit			
HEALTH & HUMAN SERVICES DEPARTMENT															
2110	HHS Administration	234,650	2,410,845	2,645,494	(2,645,494)	-	-	-	2,046,058	14.27%	291,913	73,414	(365,326)		
2120	Medical Administration	90,067	247,240	337,306	-	337,306	-	337,306	3,938	14.27%	-	1,030	-	208,590	(208,590)
2150	HHS Debt Service	50,698	-	50,698	(15,431)	35,266	(15,431)	19,835	-	14.27%	-	34,581	-	-	-
	Total Administration	375,414	2,658,084	3,033,498	(2,660,925)	372,573	(15,431)	357,141	2,049,995		291,913	109,024	(365,326)	208,590	(208,590)
2210	Management Support Svcs Admin	301,350	496,424	797,774	(797,748)	26	-	26	10,437	14.27%	1,489	20,400	(21,863)		
2220	Fiscal Support	403,677	336,664	740,340	(738,491)	1,849	-	1,849	17,744	14.27%	2,532	2,364	(3,047)		
22115G	Youth Reception Center	-	-	-	-	-	-	-	-	14.27%	-	-	-	-	-
22118G	Naccho Accreditation 2008	-	-	-	-	-	-	-	-	14.27%	-	-	-	-	-
2240	Grants and Contracts	448,603	433,604	882,207	(14,124)	868,083	14,124	882,207	73,484	14.27%	10,484	59,741	811,982	308,741	503,241
2250	Support Services Contributions	2,039,145	106,142	2,145,286	(581,372)	1,563,914	581,372	2,145,286	84,114	14.27%	12,001	270,000	1,863,286	83,391	1,779,895
2251G	Animal Control Donations	-	-	-	(2,902)	(2,902)	2,902	-	-	14.27%	-	-	-	-	-
2270	Juvenile Offender Program	225,340	3,377	228,717	-	228,717	-	228,717	-	14.27%	-	225,340	3,377	2,895	482
2610	Health Plan/Prep Support	310,215	284,681	594,896	(141,203)	453,692	141,203	594,896	13,270	14.27%	1,893	565	592,437	232,688	359,749
2620	H&HS Information Systems	177,871	178,852	356,723	(354,002)	2,721	354,002	356,723	5,394	14.27%	770	11,739	344,214	148,711	195,503
2684	88 GO Bonds Water Quality	-	-	-	-	-	-	-	-	14.27%	-	-	-	-	-
2720	SART Program	349,577	37,256	386,833	-	386,833	-	386,833	-	14.27%	-	349,577	37,256	31,941	5,315
2730	Interpersonal Violence Prevent	126,607	5,787	132,395	-	132,395	-	132,395	5,787	14.27%	826	(13)	131,581	-	131,581
	Total Management Support Services	4,382,384	1,882,786	6,265,171	(2,629,843)	3,635,328	1,093,604	4,728,931	210,230		29,994	939,714	3,759,223	808,367	2,975,766
2320	Social Svcs Administration	191,317	782,613	973,930	(962,709)	11,221	-	11,221	7,520	14.27%	1,073	11,122	(974)		
2330	Senior Citizens Programs	930,305	493,896	1,424,201	-	1,424,201	-	1,424,201	490,097	14.27%	69,923	786,572	567,706	418,075	149,632
23219G	Aging Disability Resource	90,481	11,999	102,480	(102,480)	-	102,480	102,480	5,470	14.27%	780	1,433	100,267	6,748	93,519
232110G	Aging Disability Resource Ctr	59,970	17,690	77,660	(77,660)	-	77,660	77,660	2,318	14.27%	331	-	77,329	12,716	64,613
23339G	Child Care Licensing	754,653	92,151	846,805	(681,656)	165,149	681,656	846,805	31,941	14.27%	4,557	4,660	837,588	49,300	788,288
23310G	Child Care Licensing 2010	-	-	-	-	-	-	-	-	14.27%	-	-	-	-	-
23349G	ESG 2009	30,528	-	30,528	(30,528)	-	30,528	30,528	-	14.27%	-	-	30,528	-	30,528
233410G	Emergency Shelter Grant 2010	(319)	4,149	3,830	(3,830)	-	3,830	3,830	3,956	14.27%	564	-	3,266	3,557	(291)
23479G	Child Care Assistance 09	656,182	87,355	743,536	(743,536)	-	743,536	743,536	24,937	14.27%	3,558	19,988	719,991	50,801	669,190
234710G	Child Care Assistance 11	559,821	79,745	639,566	(639,566)	-	639,566	639,566	24,712	14.27%	3,526	-	636,040	46,474	589,566
23499G	Human Services Matching Grant	563,245	-	563,245	(346,619)	216,626	346,619	563,245	-	14.27%	-	541,566	21,679	-	21,679
234910G	Human Services Matching Grant	679,071	-	679,071	(860,569)	(181,498)	860,569	679,071	-	14.27%	-	654,449	24,622	-	24,622
23689G	AHFC Link Program 09	39,959	12,961	52,920	(52,713)	207	52,713	52,920	12,961	14.27%	1,849	13,678	37,392	10,714	26,678
236810G	AHFC Link Program 2010	130,017	14,371	144,387	(144,387)	-	144,387	144,387	14,371	14.27%	2,050	1,026	141,312	8,865	132,447
23699G	HUD link Program 09	85,434	17,346	102,780	(102,068)	712	102,068	102,780	17,346	14.27%	2,475	-	100,305	12,723	87,582
236910G	HUD Link Program 10	191,250	19,311	210,561	(210,563)	(2)	210,563	210,561	19,311	14.27%	2,755	1,951	205,855	12,736	193,119
23869G	WIC Program BP2009	627,786	54,545	682,331	(682,331)	-	682,331	682,331	23,731	14.27%	3,386	-	678,945	26,418	652,527
238610G	WIC Program BP 2010	571,013	109,831	680,844	(680,844)	-	680,844	680,844	22,804	14.27%	3,254	-	677,590	74,611	602,980
23218G	Aging Disability Ressource Ctr	-	-	-	-	-	-	-	-	14.27%	-	-	-	-	-
23338G	Child Care Licensing 08	-	-	-	-	-	-	-	-	14.27%	-	-	-	-	-
23346G	Emergency Services Grant -PY06	-	-	-	-	-	-	-	-	14.27%	-	-	-	-	-
23347G	Emergency Shelter Grant	-	-	-	-	-	-	-	-	14.27%	-	-	-	-	-
23348G	Emergency Shelter Grant	-	-	-	-	-	-	-	-	14.27%	-	-	-	-	-
23477G	Child Care Assistance 07	-	-	-	-	-	-	-	-	14.27%	-	-	-	-	-
23478G	Child Care Assistance 08	-	-	-	-	-	-	-	-	14.27%	-	-	-	-	-
23497G	Human Services Matching Grant	-	-	-	-	-	-	-	-	14.27%	-	-	-	-	-
23498G	Human Services Matching Grant	-	-	-	-	-	-	-	-	14.27%	-	-	-	-	-



**Municipality of Anchorage
Indirect Cost Proposal
Using Results as of December 31, 2010**

Dept ID	Description	Direct Expenditures	IGC Expenditures	Total Direct and IGC Expenditures	Total Billings (IGC) & Program Revenues	Net Costs	Adjustment for Billings to Non-Chargeout units	Net Costs, After Adj	Total Charges From Central Services Plan IGCs	Non-Allowable Expense Adj			Adjusted Net Allowable Costs	Allowable IGCs Treated as Indirect Costs	Allowable Directs
										% Not Allowable (from CSP)	From Central Services Plan	Within Unit			
2360	Safe Cities Program	209,572	757,211	966,783	-	966,783	-	966,783	9,204	14.27%	1,313	448	965,022	641,288	323,734
23617G	SouthCentral Found CSP07	-	-	-	-	-	-	-	-	14.27%	-	-	-	-	-
23618G	Southcentral Fdn CSP 2008	-	-	-	-	-	-	-	-	14.27%	-	-	-	-	-
23634G	Pathways to Sobriety II 04-07	-	-	-	-	-	-	-	-	14.27%	-	-	-	-	-
23637G	Pathways To Sobriety III 07-08	-	-	-	-	-	-	-	-	14.27%	-	-	-	-	-
23638G	Pathways to Sobriety 08-09	89,518	25,595	115,112	(94,220)	20,892	94,220	115,112	367	14.27%	52	1,676	113,384	21,629	91,756
23688G	AHFC Link Program 08	(2,987)	(287)	(3,274)	3,274	-	(3,274)	(3,274)	-	14.27%	-	-	(3,274)	(246)	(3,028)
23698G	HUD Link Program 08	-	-	-	-	-	-	-	-	14.27%	-	-	-	-	-
2370	Research & Technical Support	3,941	5,575	9,517	-	9,517	-	9,517	-	14.27%	-	-	9,517	4,780	4,737
23706G	ANC DV Prevention Proj	2,078	-	2,078	(2,078)	-	2,078	2,078	-	14.27%	-	-	2,078	-	2,078
23708G	Domestic Violence 2008	510,524	26,335	536,860	(536,860)	-	536,860	536,860	11,823	14.27%	1,687	1,690	533,483	12,442	521,042
2380	Family Nutrition & Hlth Svcs	88,794	240,566	329,360	(86,647)	242,713	86,647	329,360	11,795	14.27%	1,683	-	327,678	202,777	124,901
23867G	WIC Program BP2007	-	-	-	-	-	-	-	-	14.27%	-	-	-	-	-
23868G	WIC Program BP2008	-	-	-	-	-	-	-	-	14.27%	-	-	-	-	-
2411G	Miscellaneous Contributions	2,326	-	2,326	-	2,326	-	2,326	-	14.27%	-	-	2,326	-	2,326
24687G	AHFC Link Program 07	-	-	-	0	0	(0)	-	-	14.27%	-	-	-	-	-
24697G	HUD Link Program 07	-	-	-	-	-	-	-	-	14.27%	-	-	-	-	-
24706g	AHFC HMIS STATE USERS	-	-	-	-	-	-	-	-	14.27%	-	-	-	-	-
23349G	esg 2009	30,528	-	30,528	(30,528)	-	30,528	30,528	-	14.27%	-	-	30,528	-	30,528
233410G	Emergency Shelter Grant 2010	(319)	4,149	3,830	(3,830)	-	3,830	3,830	3,956	14.27%	564	-	3,266	3,557	(291)
236910G	HUD Link Program 2010	191,250	19,311	210,561	(210,563)	(2)	210,563	210,561	19,311	14.27%	2,755	1,951	205,855	12,736	193,119
23219G	Aging Disability Resources 09	90,481	11,999	102,480	(102,480)	-	102,480	102,480	5,470	14.27%	780	1,433	100,267	6,748	93,519
23335G	Child Care Licensing 05	-	-	-	-	-	-	-	-	14.27%	-	-	-	-	-
23336G	Child Care Licensing 06	-	-	-	-	-	-	-	-	14.27%	-	-	-	-	-
23339G	Child Care Licensing 09	754,653	92,151	846,805	(681,656)	165,149	681,656	846,805	31,941	14.27%	4,557	4,660	837,588	49,300	788,288
2349G	ESG 2009	-	-	-	-	-	-	-	-	14.27%	-	-	-	-	-
23360GA	Homeless Prev Stimulus ARRA	400,563	6,432	406,995	(406,995)	-	406,995	406,995	6,432	14.27%	918	2,305	403,772	3,569	400,203
23479G	Child Care Assistance 09	656,182	87,355	743,536	(743,536)	-	743,536	743,536	24,937	14.27%	3,558	19,988	719,991	50,801	669,190
23499G	Human Services Matching Grant	563,245	-	563,245	(346,619)	216,626	346,619	563,245	-	14.27%	-	541,566	21,679	-	21,679
23689G	AHFC Link Program 09	39,959	12,961	52,920	(52,713)	207	52,713	52,920	12,961	14.27%	1,849	13,678	37,392	10,714	26,678
23699G	HUD LINK Program 09	85,434	17,346	102,780	(102,068)	712	102,068	102,780	17,346	14.27%	2,475	-	100,305	12,723	87,582
23869G	WIC Program BP2009	627,786	54,545	682,331	(682,331)	-	682,331	682,331	23,731	14.27%	3,386	-	678,945	26,418	652,527
	Total Human Svcs (formerly Social Sv)	10,504,243	3,159,207	13,663,449	(10,401,910)	3,261,540	9,439,200	12,700,740	880,745		125,657	2,625,839	9,949,245	1,792,970	8,157,248
2410	Community Health Admin	182,548	517,755	700,302	(700,224)	79	-	79	5,739	14.27%	819	5,629	(6,369)	53,303	317,727
2430	Support Services	298,319	74,465	372,784	(9,857)	362,927	9,857	372,784	12,291	14.27%	1,754	-	371,031	176,341	364,255
2450	Disease Prevention & Control	333,816	217,426	551,243	(129,296)	421,947	129,296	551,243	11,740	14.27%	1,675	8,971	540,597	305,655	1,023,031
2460	Sexually Transmitted Disease C	949,098	393,885	1,342,983	(409,634)	933,349	409,634	1,342,983	37,364	14.27%	5,331	8,966	1,328,686	-	-
24717G	HIV Prevention 07	-	-	-	-	-	-	-	-	14.27%	-	-	-	-	-
24718G	HIV Prevention 08	-	-	-	-	-	-	-	-	14.27%	-	-	-	-	-
24939G	Family Planning 09	445,222	75,641	520,863	(520,863)	-	520,863	520,863	15,109	14.27%	2,156	4,794	513,913	51,896	462,017
249310G	Family Planning 2010	448,563	122,067	570,630	(570,630)	-	570,630	570,630	77,066	14.27%	10,995	-	559,635	89,748	469,887
24719G	HIV Prevention 09	75,984	8,652	84,635	(84,635)	-	84,635	84,635	2,962	14.27%	423	-	84,213	4,878	79,335
247110G	HIV Prevention 10	69,630	14,679	84,309	(84,309)	-	84,309	84,309	2,810	14.27%	401	-	83,908	10,176	73,732
248910G	Community Health Nursing 2010	425,371	83,072	508,443	(508,443)	-	508,443	508,443	16,990	14.27%	2,424	-	506,019	56,654	449,365
24939G	Family Planning 09	445,222	75,641	520,863	(520,863)	-	520,863	520,863	15,109	14.27%	2,156	4,794	513,913	51,896	462,017
249310G	Family Planning 10	448,563	122,067	570,630	(570,630)	-	570,630	570,630	77,066	14.27%	10,995	-	559,635	89,748	469,887
24897G	Community Health Nursing	-	-	-	-	-	-	-	-	14.27%	-	-	-	-	-
24898G	Community Health Nursing	-	-	-	-	-	-	-	-	14.27%	-	-	-	-	-
24914G	BJA SART 2004-DD-BX-1454	-	-	-	-	-	-	-	-	14.27%	-	-	-	-	-
24937G	Family Planning 07	-	-	-	-	-	-	-	-	14.27%	-	-	-	-	-
24938G	Family Planning 08	-	-	-	-	-	-	-	-	14.27%	-	-	-	-	-



**Municipality of Anchorage
Indirect Cost Proposal
Using Results as of December 31, 2010**

Dept ID	Description	Direct Expenditures	IGC Expenditures	Total Direct and IGC Expenditures	Total Billings (IGC) & Program Revenues	Net Costs	Adjustment for Billings to Non-Chargeout units	Net Costs, After Adj	Non-Allowable Expense Adj					Adjusted Net Allowable Costs	Allowable IGCs Treated as Indirect Costs	Allowable Directs
									Total Charges From Central Services Plan IGCs	% Not Allowable (from CSP)	From Central Services Plan	Within Unit				
24945G	STOP VIOLENCE VS WOMEN 05	-	-	-	-	-	-	-	-	14.27%	-	-	-	-	-	-
21758G	SAMHSA Meth Educ 2008	-	-	-	-	-	-	-	-	14.27%	-	-	-	-	-	-
2440	Family Nutrition and Health	-	-	-	-	-	-	-	-	14.27%	-	-	-	-	-	-
24719G	HIV Prevention 09	75,984	8,652	84,635	(84,635)	-	84,635	84,635	2,962	14.27%	423	-	84,213	4,878	79,335	
24899G	Community Health Nursing	477,218	57,756	534,974	(534,974)	-	534,974	534,974	18,326	14.27%	2,615	-	532,359	33,804	498,555	
24939G	Family Planning 09	445,222	75,641	520,863	(520,863)	-	520,863	520,863	15,109	14.27%	2,156	4,794	513,913	51,896	462,017	
24942G	ANC D/V Prevention Program	-	-	-	-	-	-	-	-	-	-	-	-	-	-	-
	Total Community Health Services	5,120,759	1,847,397	6,968,156	(5,249,855)	1,718,301	4,549,631	6,267,932	310,643		44,320	37,948	6,185,665	980,873	5,211,161	
2510	Environmental Svcs Admin	13,331	539,646	552,977	(550,956)	2,021	-	2,021	221	14.27%	32	5,540	(3,551)	59,716	234,662	
2520	Customer Service	217,091	78,557	295,649	(295,570)	79	295,570	295,649	8,904	14.27%	1,270	-	294,378	373,354	1,043,971	
2540	Vehicle Inspection Program	1,282,441	461,611	1,744,052	(1,674,583)	69,470	1,674,583	1,744,052	26,126	14.27%	3,727	323,000	1,417,325	371,756	931,424	
2560	Environmental Sanitation	843,367	467,730	1,311,097	(751,435)	559,662	751,435	1,311,097	34,109	14.27%	4,866	3,051	1,303,180	178,522	86,657	
2580	Child/Adult Care Licensing Pgm	44,498	220,793	265,291	(24,383)	240,908	24,383	265,291	778	14.27%	111	-	265,180	19,346	502,344	
253910G	Air Quality 105 2010	484,673	41,558	526,232	(528,847)	(2,615)	528,847	526,232	31,830	14.27%	4,541	-	521,690	-	-	
25337G	Child Care Licensing 07	-	-	-	-	-	-	-	-	14.27%	-	-	-	-	-	
25398G	AIR QUALITY 105 2008	(10,753)	8,307	(2,446)	2,446	(0)	(2,446)	(2,446)	13,349	14.27%	1,905	-	(4,350)	7,430	(11,780)	
25444G	CMAQ Public Awareness	-	-	-	-	-	-	-	-	14.27%	-	-	-	-	-	
25448G	Air Quality Public Awareness	238,786	52,453	291,239	(291,239)	-	291,239	291,239	25,662	14.27%	3,661	-	287,578	43,310	244,269	
253910G	Air Quality 105 2010	484,673	41,558	526,232	(528,847)	(2,615)	528,847	526,232	31,830	14.27%	4,541	-	521,690	19,346	502,344	
25454G	ANC Air Prgm Initiatives	214,863	3,401	218,264	(218,264)	-	218,264	218,264	3,401	14.27%	485	1,798	215,981	-	215,981	
25508G	ANC Air Toxics Monitoring	55,878	2,176	58,054	(58,054)	-	58,054	58,054	3,433	14.27%	490	-	57,565	84	57,481	
26587G	Bioterrorism 07	-	-	-	-	-	-	-	-	14.27%	-	-	-	-	-	
26588G	Bioterrorism 08	-	-	-	-	-	-	-	-	14.27%	-	-	-	-	-	
2574G	94 WQ Monitoring and Insp	-	-	-	-	-	-	-	-	14.27%	-	-	-	-	-	
2582G	FY96 Water Quality Monitoring	-	-	-	-	-	-	-	-	14.27%	-	-	-	-	-	
261310G	Cook Inlet Tribal Council 2010	14,457	3,839	18,296	(18,296)	-	18,296	18,296	658	14.27%	94	-	18,203	2,727	15,475	
26589G	Bioterrorism 09	566,246	122,577	688,823	(688,823)	-	688,823	688,823	12,500	14.27%	1,783	77,988	609,051	94,316	514,735	
265810G	Bioterrorism 10	276,661	54,001	330,662	(330,662)	-	330,662	330,662	27,189	14.27%	3,879	-	326,783	35,660	291,123	
272010G	2010 start ast Reimbursement	146,826	8,550	155,376	(155,376)	-	155,376	155,376	8,550	14.27%	1,220	146,826	7,330	7,330	(0)	
26139G	Cook Inlet Tribal Council MOU	38,952	9,452	48,404	(48,404)	-	48,404	48,404	5,073	14.27%	724	-	47,680	6,647	41,033	
26589G	Bioterrorism 09	566,246	122,577	688,823	(688,823)	-	688,823	688,823	12,500	14.27%	1,783	77,988	609,051	94,316	514,735	
	Total Environmental	5,478,237	2,238,789	7,717,025	(6,850,116)	866,909	6,299,160	7,166,069	246,115		35,113	636,190	6,494,765	1,313,862	5,184,454	
2710	Anchorage Cemetery	571,897	296,109	868,006	(345,936)	522,070	345,936	868,006	4,463	14.27%	-	179,082	688,924	250,037	438,887	
	Total Cemetery	571,897	296,109	868,006	(345,936)	522,070	345,936	868,006	4,463		0	179,082	688,924	250,037	438,887	
	Total Health Human Services	26,432,933	12,082,372	38,515,306	(28,138,585)	10,376,721	21,712,099	32,088,820	3,702,191		526,997	4,527,797	26,712,496	5,354,699	21,758,926	

2010 All Expend and Revenues

Unit	Ledger	Acct	Fund	DeptID	Sum Total Amt	Year
MOABU	ACTUALS	1101	101	2110	133,869.69	2,010
MOABU	ACTUALS	1301	101	2110	15,273.81	2,010
MOABU	ACTUALS	1401	101	2110	78,570.70	2,010
MOABU	ACTUALS	2101	101	2110	1,499.36	2,010
MOABU	ACTUALS	2201	101	2110	740.64	2,010
MOABU	ACTUALS	3201	101	2110	556.50	2,010
MOABU	ACTUALS	3203	101	2110	51.17	2,010
MOABU	ACTUALS	3334	101	2110	976.41	2,010
MOABU	ACTUALS	3336	101	2110	277.05	2,010
MOABU	ACTUALS	3337	101	2110	144.00	2,010
MOABU	ACTUALS	3339	101	2110	26.00	2,010
MOABU	ACTUALS	3601	101	2110	224.17	2,010
MOABU	ACTUALS	3801	101	2110	92.80	2,010
MOABU	ACTUALS	3805	101	2110	780.00	2,010
MOABU	ACTUALS	3808	101	2110	129.36	2,010
MOABU	ACTUALS	3814	101	2110	40.00	2,010
MOABU	ACTUALS	3815	101	2110	423.00	2,010
MOABU	ACTUALS	3828	101	2110	125.00	2,010
MOABU	ACTUALS	5401	101	2110	850.00	2,010
MOABU	ACTUALS	1101	101	2120	50,323.81	2,010
MOABU	ACTUALS	1201	101	2120	65.63	2,010
MOABU	ACTUALS	1301	101	2120	6,451.16	2,010
MOABU	ACTUALS	1401	101	2120	32,102.04	2,010
MOABU	ACTUALS	3201	101	2120	93.86	2,010
MOABU	ACTUALS	3334	101	2120	0.00	2,010
MOABU	ACTUALS	5603	101	2120	1,030.00	2,010
MOABU	ACTUALS	3121	101	2150	690.39	2,010
MOABU	ACTUALS	4101	101	2150	15,446.15	2,010
MOABU	ACTUALS	4102	101	2150	19,043.53	2,010
MOABU	ACTUALS	4103	101	2150	91.04	2,010
MOABU	ACTUALS	4201	101	2150	15,349.19	2,010
MOABU	ACTUALS	4301	101	2150	77.21	2,010
MOABU	ACTUALS	1101	101	2210	142,214.35	2,010
MOABU	ACTUALS	1301	101	2210	24,751.14	2,010
MOABU	ACTUALS	1401	101	2210	89,885.20	2,010
MOABU	ACTUALS	2101	101	2210	6,431.66	2,010
MOABU	ACTUALS	2201	101	2210	5,613.65	2,010
MOABU	ACTUALS	2203	101	2210	125.73	2,010
MOABU	ACTUALS	2208	101	2210	1,175.47	2,010
MOABU	ACTUALS	2301	101	2210	44.51	2,010
MOABU	ACTUALS	3201	101	2210	642.86	2,010
MOABU	ACTUALS	3203	101	2210	605.62	2,010
MOABU	ACTUALS	3302	101	2210	11.95	2,010
MOABU	ACTUALS	3601	101	2210	904.00	2,010
MOABU	ACTUALS	3701	101	2210	350.00	2,010
MOABU	ACTUALS	3702	101	2210	6,564.00	2,010
MOABU	ACTUALS	3807	101	2210	1,430.00	2,010
MOABU	ACTUALS	3815	101	2210	20,000.00	2,010
MOABU	ACTUALS	3828	101	2210	200.00	2,010
MOABU	ACTUALS	5401	101	2210	400.00	2,010
MOABU	ACTUALS	1101	101	2220	215,586.22	2,010
MOABU	ACTUALS	1201	101	2220	433.98	2,010
MOABU	ACTUALS	1301	101	2220	41,290.69	2,010

2010 All Expend and Revenues

MOABU	ACTUALS	1401	101	2220	138,697.75	2,010
MOABU	ACTUALS	3201	101	2220	379.84	2,010
MOABU	ACTUALS	3203	101	2220	0.00	2,010
MOABU	ACTUALS	3312	101	2220	9.77	2,010
MOABU	ACTUALS	3601	101	2220	100.00	2,010
MOABU	ACTUALS	3808	101	2220	4,416.00	2,010
MOABU	ACTUALS	3814	101	2220	0.00	2,010
MOABU	ACTUALS	3828	101	2220	398.00	2,010
MOABU	ACTUALS	5401	101	2220	850.00	2,010
MOABU	ACTUALS	5604	101	2220	1,514.37	2,010
MOABU	ACTUALS	1101	101	2240	251,554.02	2,010
MOABU	ACTUALS	1301	101	2240	35,024.42	2,010
MOABU	ACTUALS	1401	101	2240	148,579.97	2,010
MOABU	ACTUALS	2101	101	2240	51.50	2,010
MOABU	ACTUALS	2201	101	2240	16.00	2,010
MOABU	ACTUALS	3101	101	2240	11.40	2,010
MOABU	ACTUALS	3201	101	2240	380.18	2,010
MOABU	ACTUALS	3202	101	2240	10.00	2,010
MOABU	ACTUALS	3203	101	2240	150.00	2,010
MOABU	ACTUALS	3302	101	2240	27.00	2,010
MOABU	ACTUALS	3303	101	2240	20.60	2,010
MOABU	ACTUALS	3601	101	2240	252.50	2,010
MOABU	ACTUALS	3801	101	2240	463.26	2,010
MOABU	ACTUALS	3807	101	2240	150.00	2,010
MOABU	ACTUALS	3814	101	2240	115.00	2,010
MOABU	ACTUALS	3822	101	2240	5,298.79	2,010
MOABU	ACTUALS	3828	101	2240	398.00	2,010
MOABU	ACTUALS	5401	101	2240	1,000.00	2,010
MOABU	ACTUALS	5411	101	2240	5,100.45	2,010
MOABU	ACTUALS	2101	101	2250	39.95	2,010
MOABU	ACTUALS	2201	101	2250	127.15	2,010
MOABU	ACTUALS	2301	101	2250	95.45	2,010
MOABU	ACTUALS	3101	101	2250	1,751,275.99	2,010
MOABU	ACTUALS	3201	101	2250	4,926.91	2,010
MOABU	ACTUALS	3202	101	2250	16.39	2,010
MOABU	ACTUALS	3203	101	2250	1,980.00	2,010
MOABU	ACTUALS	3601	101	2250	6,001.40	2,010
MOABU	ACTUALS	3612	101	2250	2,880.00	2,010
MOABU	ACTUALS	3801	101	2250	46.48	2,010
MOABU	ACTUALS	3802	101	2250	405.00	2,010
MOABU	ACTUALS	3807	101	2250	1,350.00	2,010
MOABU	ACTUALS	3901	101	2250	270,000.00	2,010
MOABU	ACTUALS	3101	261	2251G	0.00	2,010
MOABU	ACTUALS	3815	101	2270	225,340.00	2,010
MOABU	ACTUALS	1101	101	2320	101,846.82	2,010
MOABU	ACTUALS	1301	101	2320	6,756.85	2,010
MOABU	ACTUALS	1401	101	2320	59,081.07	2,010
MOABU	ACTUALS	2101	101	2320	935.67	2,010
MOABU	ACTUALS	2201	101	2320	1,563.73	2,010
MOABU	ACTUALS	2208	101	2320	383.52	2,010
MOABU	ACTUALS	3101	101	2320	750.00	2,010
MOABU	ACTUALS	3201	101	2320	296.65	2,010
MOABU	ACTUALS	3334	101	2320	0.00	2,010
MOABU	ACTUALS	3335	101	2320	0.00	2,010
MOABU	ACTUALS	3336	101	2320	0.00	2,010

2010 All Expend and Revenues

MOABU	ACTUALS	3337	101	2320	0.00	2,010
MOABU	ACTUALS	3601	101	2320	640.00	2,010
MOABU	ACTUALS	3702	101	2320	4,488.00	2,010
MOABU	ACTUALS	3801	101	2320	7.20	2,010
MOABU	ACTUALS	3802	101	2320	552.75	2,010
MOABU	ACTUALS	3803	101	2320	1,499.99	2,010
MOABU	ACTUALS	3805	101	2320	149.00	2,010
MOABU	ACTUALS	3814	101	2320	189.00	2,010
MOABU	ACTUALS	3901	101	2320	4,959.00	2,010
MOABU	ACTUALS	5401	101	2320	4,188.00	2,010
MOABU	ACTUALS	5603	101	2320	1,000.00	2,010
MOABU	ACTUALS	5605	101	2320	974.77	2,010
MOABU	ACTUALS	5609	101	2320	1,054.95	2,010
MOABU	ACTUALS	1101	231	232110G	31,094.96	2,010
MOABU	ACTUALS	1201	231	232110G	17.38	2,010
MOABU	ACTUALS	1301	231	232110G	2,553.68	2,010
MOABU	ACTUALS	1401	231	232110G	24,620.24	2,010
MOABU	ACTUALS	2201	231	232110G	236.97	2,010
MOABU	ACTUALS	3201	231	232110G	92.67	2,010
MOABU	ACTUALS	3203	231	232110G	37.82	2,010
MOABU	ACTUALS	3701	231	232110G	104.50	2,010
MOABU	ACTUALS	3802	231	232110G	661.83	2,010
MOABU	ACTUALS	3805	231	232110G	250.00	2,010
MOABU	ACTUALS	3828	231	232110G	300.00	2,010
MOABU	ACTUALS	1101	231	23219G	31,772.35	2,010
MOABU	ACTUALS	1201	231	23219G	1,541.88	2,010
MOABU	ACTUALS	1301	231	23219G	2,626.87	2,010
MOABU	ACTUALS	1401	231	23219G	20,091.08	2,010
MOABU	ACTUALS	2101	231	23219G	4,004.74	2,010
MOABU	ACTUALS	2201	231	23219G	10,688.89	2,010
MOABU	ACTUALS	3201	231	23219G	55.07	2,010
MOABU	ACTUALS	3202	231	23219G	96.80	2,010
MOABU	ACTUALS	3203	231	23219G	414.25	2,010
MOABU	ACTUALS	3334	231	23219G	853.50	2,010
MOABU	ACTUALS	3336	231	23219G	1,009.75	2,010
MOABU	ACTUALS	3337	231	23219G	216.00	2,010
MOABU	ACTUALS	3612	231	23219G	1,896.00	2,010
MOABU	ACTUALS	3802	231	23219G	10,143.42	2,010
MOABU	ACTUALS	3805	231	23219G	20.00	2,010
MOABU	ACTUALS	3828	231	23219G	199.00	2,010
MOABU	ACTUALS	5604	231	23219G	732.20	2,010
MOABU	ACTUALS	5605	231	23219G	700.53	2,010
MOABU	ACTUALS	5609	231	23219G	3,418.72	2,010
MOABU	ACTUALS	1101	101	2330	80,566.59	2,010
MOABU	ACTUALS	1201	101	2330	81.12	2,010
MOABU	ACTUALS	1301	101	2330	8,856.24	2,010
MOABU	ACTUALS	1401	101	2330	52,075.79	2,010
MOABU	ACTUALS	2201	101	2330	175.51	2,010
MOABU	ACTUALS	3201	101	2330	279.62	2,010
MOABU	ACTUALS	3202	101	2330	753.38	2,010
MOABU	ACTUALS	3203	101	2330	332.05	2,010
MOABU	ACTUALS	3601	101	2330	200.00	2,010
MOABU	ACTUALS	3801	101	2330	99.43	2,010
MOABU	ACTUALS	3802	101	2330	313.23	2,010
MOABU	ACTUALS	3815	101	2330	786,572.00	2,010

2010 All Expend and Revenues

MOABU	ACTUALS	1101	231	233310G	390,402.06	2,010
MOABU	ACTUALS	1201	231	233310G	2,346.03	2,010
MOABU	ACTUALS	1301	231	233310G	41,960.17	2,010
MOABU	ACTUALS	1401	231	233310G	240,096.48	2,010
MOABU	ACTUALS	2201	231	233310G	2,510.91	2,010
MOABU	ACTUALS	2208	231	233310G	478.40	2,010
MOABU	ACTUALS	3201	231	233310G	762.40	2,010
MOABU	ACTUALS	3202	231	233310G	42.60	2,010
MOABU	ACTUALS	3203	231	233310G	108.90	2,010
MOABU	ACTUALS	3302	231	233310G	185.94	2,010
MOABU	ACTUALS	3312	231	233310G	79.59	2,010
MOABU	ACTUALS	3601	231	233310G	1,094.76	2,010
MOABU	ACTUALS	3702	231	233310G	4,410.00	2,010
MOABU	ACTUALS	1101	231	23339G	392,871.39	2,010
MOABU	ACTUALS	1201	231	23339G	40,808.03	2,010
MOABU	ACTUALS	1301	231	23339G	40,519.18	2,010
MOABU	ACTUALS	1401	231	23339G	265,942.22	2,010
MOABU	ACTUALS	2201	231	23339G	3,465.60	2,010
MOABU	ACTUALS	3101	231	23339G	3,351.36	2,010
MOABU	ACTUALS	3201	231	23339G	544.68	2,010
MOABU	ACTUALS	3203	231	23339G	181.50	2,010
MOABU	ACTUALS	3302	231	23339G	319.27	2,010
MOABU	ACTUALS	3312	231	23339G	42.12	2,010
MOABU	ACTUALS	3601	231	23339G	682.00	2,010
MOABU	ACTUALS	3802	231	23339G	1,041.00	2,010
MOABU	ACTUALS	3828	231	23339G	225.00	2,010
MOABU	ACTUALS	5603	231	23339G	4,660.00	2,010
MOABU	ACTUALS	3101	241	233410G	0.00	2,010
MOABU	ACTUALS	3701	241	233410G	-319.00	2,010
MOABU	ACTUALS	3808	241	233410G	0.00	2,010
MOABU	ACTUALS	3101	241	23349G	29,134.00	2,010
MOABU	ACTUALS	3701	241	23349G	1,394.40	2,010
MOABU	ACTUALS	3808	241	23349G	0.00	2,010
MOABU	ACTUALS	1101	241	23360GA	37,193.89	2,010
MOABU	ACTUALS	1201	241	23360GA	2,702.47	2,010
MOABU	ACTUALS	1301	241	23360GA	3,574.24	2,010
MOABU	ACTUALS	1401	241	23360GA	24,509.57	2,010
MOABU	ACTUALS	2201	241	23360GA	228.00	2,010
MOABU	ACTUALS	3101	241	23360GA	329,986.18	2,010
MOABU	ACTUALS	3611	241	23360GA	63.00	2,010
MOABU	ACTUALS	5411	241	23360GA	1,516.28	2,010
MOABU	ACTUALS	5604	241	23360GA	789.00	2,010
MOABU	ACTUALS	1101	231	234710G	306,451.76	2,010
MOABU	ACTUALS	1201	231	234710G	13,414.44	2,010
MOABU	ACTUALS	1301	231	234710G	36,178.72	2,010
MOABU	ACTUALS	1401	231	234710G	193,887.32	2,010
MOABU	ACTUALS	2101	231	234710G	1,231.26	2,010
MOABU	ACTUALS	3101	231	234710G	4,789.38	2,010
MOABU	ACTUALS	3105	231	234710G	102.00	2,010
MOABU	ACTUALS	3201	231	234710G	852.15	2,010
MOABU	ACTUALS	3312	231	234710G	82.52	2,010
MOABU	ACTUALS	3601	231	234710G	1,150.00	2,010
MOABU	ACTUALS	3802	231	234710G	56.25	2,010
MOABU	ACTUALS	3828	231	234710G	1,625.00	2,010
MOABU	ACTUALS	1101	231	23479G	286,216.16	2,010

2010 All Expend and Revenues

MOABU	ACTUALS	1201	231	23479G	49,214.60	2,010
MOABU	ACTUALS	1301	231	23479G	34,820.93	2,010
MOABU	ACTUALS	1401	231	23479G	209,485.77	2,010
MOABU	ACTUALS	2101	231	23479G	10,033.05	2,010
MOABU	ACTUALS	2201	231	23479G	5,195.81	2,010
MOABU	ACTUALS	3101	231	23479G	6,801.95	2,010
MOABU	ACTUALS	3105	231	23479G	204.00	2,010
MOABU	ACTUALS	3201	231	23479G	-275.35	2,010
MOABU	ACTUALS	3303	231	23479G	1,005.00	2,010
MOABU	ACTUALS	3312	231	23479G	80.85	2,010
MOABU	ACTUALS	3601	231	23479G	370.00	2,010
MOABU	ACTUALS	3802	231	23479G	24,997.25	2,010
MOABU	ACTUALS	3803	231	23479G	1,404.00	2,010
MOABU	ACTUALS	3828	231	23479G	1,475.00	2,010
MOABU	ACTUALS	5401	231	23479G	4,153.95	2,010
MOABU	ACTUALS	5411	231	23479G	6,298.00	2,010
MOABU	ACTUALS	5603	231	23479G	749.99	2,010
MOABU	ACTUALS	5604	231	23479G	8,785.67	2,010
MOABU	ACTUALS	5609	231	23479G	5,165.00	2,010
MOABU	ACTUALS	3808	231	234910G	24,622.00	2,010
MOABU	ACTUALS	3815	231	234910G	654,449.00	2,010
MOABU	ACTUALS	3808	231	23499G	21,679.00	2,010
MOABU	ACTUALS	3815	231	23499G	541,566.00	2,010
MOABU	ACTUALS	1101	101	2360	111,226.20	2,010
MOABU	ACTUALS	1201	101	2360	374.16	2,010
MOABU	ACTUALS	1301	101	2360	23,776.85	2,010
MOABU	ACTUALS	1401	101	2360	70,456.91	2,010
MOABU	ACTUALS	2101	101	2360	95.49	2,010
MOABU	ACTUALS	2201	101	2360	958.14	2,010
MOABU	ACTUALS	3101	101	2360	1,725.00	2,010
MOABU	ACTUALS	3201	101	2360	343.05	2,010
MOABU	ACTUALS	3202	101	2360	18.30	2,010
MOABU	ACTUALS	3501	101	2360	0.00	2,010
MOABU	ACTUALS	3805	101	2360	25.00	2,010
MOABU	ACTUALS	3828	101	2360	125.00	2,010
MOABU	ACTUALS	5411	101	2360	448.34	2,010
MOABU	ACTUALS	1101	241	23638G	1,868.66	2,010
MOABU	ACTUALS	1201	241	23638G	3,249.64	2,010
MOABU	ACTUALS	1301	241	23638G	464.37	2,010
MOABU	ACTUALS	1401	241	23638G	1,915.73	2,010
MOABU	ACTUALS	2201	241	23638G	23.20	2,010
MOABU	ACTUALS	3101	241	23638G	78,644.00	2,010
MOABU	ACTUALS	3334	241	23638G	830.20	2,010
MOABU	ACTUALS	3335	241	23638G	69.00	2,010
MOABU	ACTUALS	3336	241	23638G	561.24	2,010
MOABU	ACTUALS	3337	241	23638G	216.00	2,010
MOABU	ACTUALS	5411	241	23638G	1,675.69	2,010
MOABU	ACTUALS	1101	231	236810G	48,990.16	2,010
MOABU	ACTUALS	1201	231	236810G	393.68	2,010
MOABU	ACTUALS	1301	231	236810G	5,331.13	2,010
MOABU	ACTUALS	1401	231	236810G	31,791.52	2,010
MOABU	ACTUALS	2201	231	236810G	64.24	2,010
MOABU	ACTUALS	3101	231	236810G	25,502.00	2,010
MOABU	ACTUALS	3201	231	236810G	372.03	2,010
MOABU	ACTUALS	3334	231	236810G	1,209.40	2,010

2010 All Expend and Revenues

MOABU	ACTUALS	3335	231	236810G	101.75	2,010
MOABU	ACTUALS	3336	231	236810G	970.00	2,010
MOABU	ACTUALS	3337	231	236810G	336.00	2,010
MOABU	ACTUALS	3612	231	236810G	12,000.00	2,010
MOABU	ACTUALS	3712	231	236810G	1,584.35	2,010
MOABU	ACTUALS	3805	231	236810G	345.00	2,010
MOABU	ACTUALS	3815	231	236810G	638.00	2,010
MOABU	ACTUALS	5411	231	236810G	387.50	2,010
MOABU	ACTUALS	3101	231	23688G	-2,987.00	2,010
MOABU	ACTUALS	1101	231	23689G	6,590.95	2,010
MOABU	ACTUALS	1201	231	23689G	126.59	2,010
MOABU	ACTUALS	1301	231	23689G	700.01	2,010
MOABU	ACTUALS	1401	231	23689G	5,893.32	2,010
MOABU	ACTUALS	2201	231	23689G	46.40	2,010
MOABU	ACTUALS	3101	231	23689G	10,223.00	2,010
MOABU	ACTUALS	3201	231	23689G	115.13	2,010
MOABU	ACTUALS	3332	231	23689G	27.00	2,010
MOABU	ACTUALS	3334	231	23689G	384.40	2,010
MOABU	ACTUALS	3336	231	23689G	158.00	2,010
MOABU	ACTUALS	3337	231	23689G	120.00	2,010
MOABU	ACTUALS	3611	231	23689G	1,896.20	2,010
MOABU	ACTUALS	3612	231	23689G	0.00	2,010
MOABU	ACTUALS	5411	231	23689G	12,894.36	2,010
MOABU	ACTUALS	5604	231	23689G	784.04	2,010
MOABU	ACTUALS	1101	241	236910G	56,353.98	2,010
MOABU	ACTUALS	1201	241	236910G	487.58	2,010
MOABU	ACTUALS	1301	241	236910G	6,105.56	2,010
MOABU	ACTUALS	1401	241	236910G	36,132.10	2,010
MOABU	ACTUALS	2201	241	236910G	64.24	2,010
MOABU	ACTUALS	3101	241	236910G	78,057.00	2,010
MOABU	ACTUALS	3201	241	236910G	660.71	2,010
MOABU	ACTUALS	3612	241	236910G	9,996.00	2,010
MOABU	ACTUALS	3712	241	236910G	792.17	2,010
MOABU	ACTUALS	3805	241	236910G	650.00	2,010
MOABU	ACTUALS	3815	241	236910G	1,951.00	2,010
MOABU	ACTUALS	1101	241	23699G	33,654.92	2,010
MOABU	ACTUALS	1201	241	23699G	493.04	2,010
MOABU	ACTUALS	1301	241	23699G	3,614.19	2,010
MOABU	ACTUALS	1401	241	23699G	23,391.78	2,010
MOABU	ACTUALS	2101	241	23699G	2,360.76	2,010
MOABU	ACTUALS	3101	241	23699G	19,504.00	2,010
MOABU	ACTUALS	3201	241	23699G	217.19	2,010
MOABU	ACTUALS	3612	241	23699G	0.00	2,010
MOABU	ACTUALS	3712	241	23699G	2,197.95	2,010
MOABU	ACTUALS	2101	101	2370	20.00	2,010
MOABU	ACTUALS	2201	101	2370	1,624.02	2,010
MOABU	ACTUALS	2301	101	2370	644.90	2,010
MOABU	ACTUALS	3101	101	2370	816.40	2,010
MOABU	ACTUALS	3801	101	2370	566.29	2,010
MOABU	ACTUALS	3805	101	2370	269.50	2,010
MOABU	ACTUALS	1401	241	23706G	2,077.93	2,010
MOABU	ACTUALS	1101	241	23708G	164,569.55	2,010
MOABU	ACTUALS	1201	241	23708G	3,674.27	2,010
MOABU	ACTUALS	1301	241	23708G	14,613.31	2,010
MOABU	ACTUALS	1401	241	23708G	112,120.40	2,010

2010 All Expend and Revenues

MOABU	ACTUALS	2201	241	23708G	219.99	2,010
MOABU	ACTUALS	3101	241	23708G	200,634.31	2,010
MOABU	ACTUALS	3201	241	23708G	186.67	2,010
MOABU	ACTUALS	3302	241	23708G	49.25	2,010
MOABU	ACTUALS	3334	241	23708G	4,923.50	2,010
MOABU	ACTUALS	3335	241	23708G	148.96	2,010
MOABU	ACTUALS	3336	241	23708G	4,390.60	2,010
MOABU	ACTUALS	3337	241	23708G	1,056.00	2,010
MOABU	ACTUALS	3338	241	23708G	2,080.00	2,010
MOABU	ACTUALS	3805	241	23708G	168.00	2,010
MOABU	ACTUALS	5411	241	23708G	927.29	2,010
MOABU	ACTUALS	5604	241	23708G	762.30	2,010
MOABU	ACTUALS	1101	101	2380	50,825.30	2,010
MOABU	ACTUALS	1201	101	2380	470.28	2,010
MOABU	ACTUALS	1301	101	2380	7,810.29	2,010
MOABU	ACTUALS	1401	101	2380	28,625.47	2,010
MOABU	ACTUALS	2201	101	2380	-20.15	2,010
MOABU	ACTUALS	3101	101	2380	189.25	2,010
MOABU	ACTUALS	3201	101	2380	155.67	2,010
MOABU	ACTUALS	3202	101	2380	12.20	2,010
MOABU	ACTUALS	3302	101	2380	249.34	2,010
MOABU	ACTUALS	3601	101	2380	445.00	2,010
MOABU	ACTUALS	3808	101	2380	31.50	2,010
MOABU	ACTUALS	3814	101	2380	0.00	2,010
MOABU	ACTUALS	1101	231	238610G	298,441.86	2,010
MOABU	ACTUALS	1201	231	238610G	27.83	2,010
MOABU	ACTUALS	1301	231	238610G	33,867.10	2,010
MOABU	ACTUALS	1401	231	238610G	198,462.20	2,010
MOABU	ACTUALS	2101	231	238610G	4,023.96	2,010
MOABU	ACTUALS	2201	231	238610G	7,621.00	2,010
MOABU	ACTUALS	2301	231	238610G	205.12	2,010
MOABU	ACTUALS	3101	231	238610G	2,751.50	2,010
MOABU	ACTUALS	3201	231	238610G	5,798.27	2,010
MOABU	ACTUALS	3202	231	238610G	202.44	2,010
MOABU	ACTUALS	3302	231	238610G	688.50	2,010
MOABU	ACTUALS	3601	231	238610G	1,025.00	2,010
MOABU	ACTUALS	3701	231	238610G	16,800.30	2,010
MOABU	ACTUALS	3805	231	238610G	100.00	2,010
MOABU	ACTUALS	3808	231	238610G	569.25	2,010
MOABU	ACTUALS	3828	231	238610G	428.40	2,010
MOABU	ACTUALS	1101	231	23869G	304,325.44	2,010
MOABU	ACTUALS	1201	231	23869G	36.58	2,010
MOABU	ACTUALS	1301	231	23869G	34,645.74	2,010
MOABU	ACTUALS	1401	231	23869G	235,635.80	2,010
MOABU	ACTUALS	2101	231	23869G	6,585.76	2,010
MOABU	ACTUALS	2201	231	23869G	17,872.10	2,010
MOABU	ACTUALS	2301	231	23869G	49.84	2,010
MOABU	ACTUALS	3101	231	23869G	2,427.50	2,010
MOABU	ACTUALS	3201	231	23869G	5,949.13	2,010
MOABU	ACTUALS	3202	231	23869G	28.04	2,010
MOABU	ACTUALS	3302	231	23869G	808.00	2,010
MOABU	ACTUALS	3334	231	23869G	670.20	2,010
MOABU	ACTUALS	3335	231	23869G	26.00	2,010
MOABU	ACTUALS	3336	231	23869G	623.44	2,010
MOABU	ACTUALS	3337	231	23869G	216.00	2,010

2010 All Expend and Revenues

MOABU	ACTUALS	3338	231	23869G	325.00	2,010
MOABU	ACTUALS	3601	231	23869G	563.54	2,010
MOABU	ACTUALS	3701	231	23869G	14,081.80	2,010
MOABU	ACTUALS	3802	231	23869G	498.75	2,010
MOABU	ACTUALS	3805	231	23869G	230.00	2,010
MOABU	ACTUALS	3808	231	23869G	1,212.48	2,010
MOABU	ACTUALS	3828	231	23869G	975.00	2,010
MOABU	ACTUALS	1101	101	2410	78,867.78	2,010
MOABU	ACTUALS	1201	101	2410	208.85	2,010
MOABU	ACTUALS	1301	101	2410	24,343.09	2,010
MOABU	ACTUALS	1401	101	2410	51,264.26	2,010
MOABU	ACTUALS	2101	101	2410	51.31	2,010
MOABU	ACTUALS	2201	101	2410	308.46	2,010
MOABU	ACTUALS	2208	101	2410	631.50	2,010
MOABU	ACTUALS	3101	101	2410	1,130.50	2,010
MOABU	ACTUALS	3201	101	2410	307.77	2,010
MOABU	ACTUALS	3702	101	2410	4,332.00	2,010
MOABU	ACTUALS	3808	101	2410	13,460.45	2,010
MOABU	ACTUALS	3814	101	2410	0.00	2,010
MOABU	ACTUALS	3815	101	2410	5,000.00	2,010
MOABU	ACTUALS	3822	101	2410	2,012.54	2,010
MOABU	ACTUALS	5603	101	2410	629.00	2,010
MOABU	ACTUALS	3803	261	2411G	50.00	2,010
MOABU	ACTUALS	3814	261	2411G	2,276.00	2,010
MOABU	ACTUALS	1101	101	2430	160,023.27	2,010
MOABU	ACTUALS	1201	101	2430	280.53	2,010
MOABU	ACTUALS	1301	101	2430	17,478.04	2,010
MOABU	ACTUALS	1401	101	2430	113,615.51	2,010
MOABU	ACTUALS	2201	101	2430	3,077.13	2,010
MOABU	ACTUALS	3101	101	2430	450.00	2,010
MOABU	ACTUALS	3105	101	2430	43.75	2,010
MOABU	ACTUALS	3201	101	2430	350.92	2,010
MOABU	ACTUALS	3612	101	2430	3,000.00	2,010
MOABU	ACTUALS	1101	101	2450	148,756.19	2,010
MOABU	ACTUALS	1201	101	2450	2,281.76	2,010
MOABU	ACTUALS	1301	101	2450	28,997.89	2,010
MOABU	ACTUALS	1401	101	2450	95,704.39	2,010
MOABU	ACTUALS	1501	101	2450	486.12	2,010
MOABU	ACTUALS	2101	101	2450	155.55	2,010
MOABU	ACTUALS	2201	101	2450	24,332.46	2,010
MOABU	ACTUALS	3101	101	2450	1,616.00	2,010
MOABU	ACTUALS	3201	101	2450	1,349.01	2,010
MOABU	ACTUALS	3202	101	2450	10.68	2,010
MOABU	ACTUALS	3203	101	2450	794.13	2,010
MOABU	ACTUALS	3302	101	2450	380.26	2,010
MOABU	ACTUALS	3601	101	2450	4,917.97	2,010
MOABU	ACTUALS	3612	101	2450	6,333.25	2,010
MOABU	ACTUALS	3701	101	2450	4,188.00	2,010
MOABU	ACTUALS	3805	101	2450	1,407.49	2,010
MOABU	ACTUALS	3808	101	2450	2,171.80	2,010
MOABU	ACTUALS	5411	101	2450	5,633.60	2,010
MOABU	ACTUALS	5603	101	2450	1,357.80	2,010
MOABU	ACTUALS	5604	101	2450	1,979.91	2,010
MOABU	ACTUALS	5609	101	2450	962.00	2,010
MOABU	ACTUALS	1101	101	2460	496,478.95	2,010

2010 All Expend and Revenues

MOABU	ACTUALS	1201	101	2460	28.40	2,010
MOABU	ACTUALS	1301	101	2460	50,983.78	2,010
MOABU	ACTUALS	1401	101	2460	285,794.73	2,010
MOABU	ACTUALS	2201	101	2460	70,863.58	2,010
MOABU	ACTUALS	2301	101	2460	54.29	2,010
MOABU	ACTUALS	3101	101	2460	800.00	2,010
MOABU	ACTUALS	3105	101	2460	278.75	2,010
MOABU	ACTUALS	3201	101	2460	2,531.39	2,010
MOABU	ACTUALS	3202	101	2460	70.12	2,010
MOABU	ACTUALS	3203	101	2460	2,770.44	2,010
MOABU	ACTUALS	3302	101	2460	703.05	2,010
MOABU	ACTUALS	3303	101	2460	32.38	2,010
MOABU	ACTUALS	3334	101	2460	0.00	2,010
MOABU	ACTUALS	3601	101	2460	1,070.50	2,010
MOABU	ACTUALS	3611	101	2460	912.00	2,010
MOABU	ACTUALS	3612	101	2460	12,401.00	2,010
MOABU	ACTUALS	3701	101	2460	405.00	2,010
MOABU	ACTUALS	3802	101	2460	1,200.00	2,010
MOABU	ACTUALS	3805	101	2460	1,963.45	2,010
MOABU	ACTUALS	3808	101	2460	10,593.10	2,010
MOABU	ACTUALS	3814	101	2460	55.25	2,010
MOABU	ACTUALS	3828	101	2460	142.00	2,010
MOABU	ACTUALS	3901	101	2460	4,275.00	2,010
MOABU	ACTUALS	5603	101	2460	2,982.78	2,010
MOABU	ACTUALS	5604	101	2460	1,708.00	2,010
MOABU	ACTUALS	1101	231	247110G	36,158.61	2,010
MOABU	ACTUALS	1301	231	247110G	3,434.13	2,010
MOABU	ACTUALS	1401	231	247110G	24,597.04	2,010
MOABU	ACTUALS	1501	231	247110G	5.28	2,010
MOABU	ACTUALS	2201	231	247110G	5,435.00	2,010
MOABU	ACTUALS	1101	231	24719G	37,913.53	2,010
MOABU	ACTUALS	1201	231	24719G	1,187.48	2,010
MOABU	ACTUALS	1301	231	24719G	3,663.70	2,010
MOABU	ACTUALS	1401	231	24719G	30,381.63	2,010
MOABU	ACTUALS	1501	231	24719G	4.24	2,010
MOABU	ACTUALS	2201	231	24719G	2,833.00	2,010
MOABU	ACTUALS	1101	231	248910G	211,409.03	2,010
MOABU	ACTUALS	1201	231	248910G	8,824.91	2,010
MOABU	ACTUALS	1301	231	248910G	22,585.06	2,010
MOABU	ACTUALS	1401	231	248910G	134,387.91	2,010
MOABU	ACTUALS	1501	231	248910G	0.56	2,010
MOABU	ACTUALS	2201	231	248910G	18,355.70	2,010
MOABU	ACTUALS	3101	231	248910G	15,625.00	2,010
MOABU	ACTUALS	3334	231	248910G	577.51	2,010
MOABU	ACTUALS	3335	231	248910G	67.00	2,010
MOABU	ACTUALS	3336	231	248910G	805.00	2,010
MOABU	ACTUALS	3337	231	248910G	264.00	2,010
MOABU	ACTUALS	3339	231	248910G	55.74	2,010
MOABU	ACTUALS	3612	231	248910G	4,523.75	2,010
MOABU	ACTUALS	3701	231	248910G	7,440.00	2,010
MOABU	ACTUALS	3828	231	248910G	300.00	2,010
MOABU	ACTUALS	3838	231	248910G	150.00	2,010
MOABU	ACTUALS	1101	231	24899G	247,022.79	2,010
MOABU	ACTUALS	1201	231	24899G	844.80	2,010
MOABU	ACTUALS	1301	231	24899G	25,923.12	2,010

2010 All Expend and Revenues

MOABU	ACTUALS	1401	231	24899G	161,389.46	2,010
MOABU	ACTUALS	1501	231	24899G	1.06	2,010
MOABU	ACTUALS	2201	231	24899G	21,370.26	2,010
MOABU	ACTUALS	3101	231	24899G	9,246.25	2,010
MOABU	ACTUALS	3332	231	24899G	6.99	2,010
MOABU	ACTUALS	3334	231	24899G	2,535.70	2,010
MOABU	ACTUALS	3335	231	24899G	102.75	2,010
MOABU	ACTUALS	3336	231	24899G	2,255.76	2,010
MOABU	ACTUALS	3337	231	24899G	1,080.00	2,010
MOABU	ACTUALS	3338	231	24899G	1,450.00	2,010
MOABU	ACTUALS	3339	231	24899G	40.00	2,010
MOABU	ACTUALS	3701	231	24899G	1,710.00	2,010
MOABU	ACTUALS	3808	231	24899G	1,938.75	2,010
MOABU	ACTUALS	3828	231	24899G	300.00	2,010
MOABU	ACTUALS	1101	241	249310G	224,749.66	2,010
MOABU	ACTUALS	1201	241	249310G	314.38	2,010
MOABU	ACTUALS	1301	241	249310G	26,002.92	2,010
MOABU	ACTUALS	1401	241	249310G	134,964.11	2,010
MOABU	ACTUALS	2201	241	249310G	46,567.88	2,010
MOABU	ACTUALS	3334	241	249310G	1,966.20	2,010
MOABU	ACTUALS	3335	241	249310G	44.00	2,010
MOABU	ACTUALS	3336	241	249310G	943.46	2,010
MOABU	ACTUALS	3337	241	249310G	404.50	2,010
MOABU	ACTUALS	3338	241	249310G	469.00	2,010
MOABU	ACTUALS	3339	241	249310G	11.00	2,010
MOABU	ACTUALS	3808	241	249310G	11,550.86	2,010
MOABU	ACTUALS	3828	241	249310G	575.00	2,010
MOABU	ACTUALS	1101	241	24939G	199,206.97	2,010
MOABU	ACTUALS	1201	241	24939G	1,092.62	2,010
MOABU	ACTUALS	1301	241	24939G	22,655.16	2,010
MOABU	ACTUALS	1401	241	24939G	139,347.32	2,010
MOABU	ACTUALS	2201	241	24939G	65,597.48	2,010
MOABU	ACTUALS	3334	241	24939G	3,040.28	2,010
MOABU	ACTUALS	3335	241	24939G	166.97	2,010
MOABU	ACTUALS	3336	241	24939G	1,437.86	2,010
MOABU	ACTUALS	3337	241	24939G	936.00	2,010
MOABU	ACTUALS	3338	241	24939G	813.00	2,010
MOABU	ACTUALS	3808	241	24939G	5,907.72	2,010
MOABU	ACTUALS	3828	241	24939G	226.50	2,010
MOABU	ACTUALS	5603	241	24939G	4,794.00	2,010
MOABU	ACTUALS	2101	101	2510	824.08	2,010
MOABU	ACTUALS	2201	101	2510	1,889.14	2,010
MOABU	ACTUALS	3101	101	2510	2,987.00	2,010
MOABU	ACTUALS	3105	101	2510	49.95	2,010
MOABU	ACTUALS	3201	101	2510	578.36	2,010
MOABU	ACTUALS	3203	101	2510	35.24	2,010
MOABU	ACTUALS	3601	101	2510	1,000.00	2,010
MOABU	ACTUALS	3802	101	2510	176.86	2,010
MOABU	ACTUALS	3822	101	2510	0.00	2,010
MOABU	ACTUALS	3828	101	2510	250.00	2,010
MOABU	ACTUALS	5401	101	2510	4,828.00	2,010
MOABU	ACTUALS	5604	101	2510	712.00	2,010
MOABU	ACTUALS	1101	101	2520	117,744.44	2,010
MOABU	ACTUALS	1301	101	2520	12,909.37	2,010
MOABU	ACTUALS	1401	101	2520	85,753.80	2,010

2010 All Expend and Revenues

MOABU	ACTUALS	2101	101	2520	149.94	2,010
MOABU	ACTUALS	2201	101	2520	63.95	2,010
MOABU	ACTUALS	2301	101	2520	11.75	2,010
MOABU	ACTUALS	3201	101	2520	243.00	2,010
MOABU	ACTUALS	3303	101	2520	15.00	2,010
MOABU	ACTUALS	3601	101	2520	200.00	2,010
MOABU	ACTUALS	1101	241	253910G	232,839.26	2,010
MOABU	ACTUALS	1301	241	253910G	31,350.09	2,010
MOABU	ACTUALS	1401	241	253910G	152,252.44	2,010
MOABU	ACTUALS	2201	241	253910G	437.87	2,010
MOABU	ACTUALS	2208	241	253910G	842.05	2,010
MOABU	ACTUALS	3101	241	253910G	44,862.12	2,010
MOABU	ACTUALS	3201	241	253910G	1,797.47	2,010
MOABU	ACTUALS	3202	241	253910G	15.70	2,010
MOABU	ACTUALS	3203	241	253910G	159.82	2,010
MOABU	ACTUALS	3303	241	253910G	1,426.41	2,010
MOABU	ACTUALS	3501	241	253910G	1,138.32	2,010
MOABU	ACTUALS	3702	241	253910G	8,592.00	2,010
MOABU	ACTUALS	3801	241	253910G	161.00	2,010
MOABU	ACTUALS	3805	241	253910G	29.00	2,010
MOABU	ACTUALS	3808	241	253910G	8,158.00	2,010
MOABU	ACTUALS	3814	241	253910G	31.50	2,010
MOABU	ACTUALS	3828	241	253910G	580.00	2,010
MOABU	ACTUALS	1101	241	25398G	-6,235.44	2,010
MOABU	ACTUALS	1301	241	25398G	-918.30	2,010
MOABU	ACTUALS	1401	241	25398G	-3,372.32	2,010
MOABU	ACTUALS	2208	241	25398G	0.00	2,010
MOABU	ACTUALS	3105	241	25398G	-49.95	2,010
MOABU	ACTUALS	3802	241	25398G	-176.86	2,010
MOABU	ACTUALS	1101	101	2540	343,804.49	2,010
MOABU	ACTUALS	1301	101	2540	31,015.14	2,010
MOABU	ACTUALS	1401	101	2540	207,821.59	2,010
MOABU	ACTUALS	2101	101	2540	452.22	2,010
MOABU	ACTUALS	2201	101	2540	1,361.19	2,010
MOABU	ACTUALS	3101	101	2540	309,418.00	2,010
MOABU	ACTUALS	3201	101	2540	663.42	2,010
MOABU	ACTUALS	3203	101	2540	221.60	2,010
MOABU	ACTUALS	3303	101	2540	868.38	2,010
MOABU	ACTUALS	3601	101	2540	500.00	2,010
MOABU	ACTUALS	3702	101	2540	4,116.00	2,010
MOABU	ACTUALS	3802	101	2540	240.00	2,010
MOABU	ACTUALS	3803	101	2540	25,090.50	2,010
MOABU	ACTUALS	3808	101	2540	2,255.00	2,010
MOABU	ACTUALS	3814	101	2540	1,311.81	2,010
MOABU	ACTUALS	3822	101	2540	30,301.94	2,010
MOABU	ACTUALS	3901	101	2540	323,000.00	2,010
MOABU	ACTUALS	1101	231	25448G	25,857.60	2,010
MOABU	ACTUALS	1301	231	25448G	3,195.58	2,010
MOABU	ACTUALS	1401	231	25448G	16,602.38	2,010
MOABU	ACTUALS	2201	231	25448G	5,021.99	2,010
MOABU	ACTUALS	3101	231	25448G	188,108.73	2,010
MOABU	ACTUALS	1101	241	25454G	47,123.06	2,010
MOABU	ACTUALS	1301	241	25454G	5,455.88	2,010
MOABU	ACTUALS	1401	241	25454G	26,593.59	2,010
MOABU	ACTUALS	2201	241	25454G	1,865.48	2,010

2010 All Expend and Revenues

MOABU	ACTUALS	3101	241	25454G	114,690.34	2,010
MOABU	ACTUALS	3201	241	25454G	1,423.13	2,010
MOABU	ACTUALS	3303	241	25454G	77.00	2,010
MOABU	ACTUALS	3612	241	25454G	4,700.00	2,010
MOABU	ACTUALS	3803	241	25454G	1,020.19	2,010
MOABU	ACTUALS	3808	241	25454G	10,117.00	2,010
MOABU	ACTUALS	5603	241	25454G	1,797.59	2,010
MOABU	ACTUALS	1101	241	25508G	29,848.53	2,010
MOABU	ACTUALS	1301	241	25508G	3,002.23	2,010
MOABU	ACTUALS	1401	241	25508G	15,616.51	2,010
MOABU	ACTUALS	2201	241	25508G	15.75	2,010
MOABU	ACTUALS	3101	241	25508G	7,125.00	2,010
MOABU	ACTUALS	3202	241	25508G	4.95	2,010
MOABU	ACTUALS	3303	241	25508G	65.01	2,010
MOABU	ACTUALS	3828	241	25508G	200.00	2,010
MOABU	ACTUALS	1101	101	2560	449,084.44	2,010
MOABU	ACTUALS	1201	101	2560	910.99	2,010
MOABU	ACTUALS	1301	101	2560	44,553.34	2,010
MOABU	ACTUALS	1401	101	2560	279,523.63	2,010
MOABU	ACTUALS	1501	101	2560	20.13	2,010
MOABU	ACTUALS	2101	101	2560	64.06	2,010
MOABU	ACTUALS	2201	101	2560	4,472.09	2,010
MOABU	ACTUALS	2208	101	2560	1,033.82	2,010
MOABU	ACTUALS	3111	101	2560	150.00	2,010
MOABU	ACTUALS	3201	101	2560	925.21	2,010
MOABU	ACTUALS	3203	101	2560	3,344.96	2,010
MOABU	ACTUALS	3302	101	2560	23.00	2,010
MOABU	ACTUALS	3303	101	2560	158.91	2,010
MOABU	ACTUALS	3334	101	2560	1,801.00	2,010
MOABU	ACTUALS	3335	101	2560	43.00	2,010
MOABU	ACTUALS	3336	101	2560	566.10	2,010
MOABU	ACTUALS	3337	101	2560	336.00	2,010
MOABU	ACTUALS	3338	101	2560	618.00	2,010
MOABU	ACTUALS	3601	101	2560	2,185.00	2,010
MOABU	ACTUALS	3611	101	2560	150.40	2,010
MOABU	ACTUALS	3612	101	2560	19,748.61	2,010
MOABU	ACTUALS	3701	101	2560	500.00	2,010
MOABU	ACTUALS	3702	101	2560	25,068.00	2,010
MOABU	ACTUALS	3802	101	2560	865.80	2,010
MOABU	ACTUALS	3805	101	2560	284.00	2,010
MOABU	ACTUALS	3822	101	2560	2,890.27	2,010
MOABU	ACTUALS	3828	101	2560	1,145.00	2,010
MOABU	ACTUALS	5411	101	2560	2,210.60	2,010
MOABU	ACTUALS	5604	101	2560	690.20	2,010
MOABU	ACTUALS	1101	101	2580	9,792.33	2,010
MOABU	ACTUALS	1201	101	2580	789.51	2,010
MOABU	ACTUALS	1301	101	2580	17,689.71	2,010
MOABU	ACTUALS	1401	101	2580	5,969.36	2,010
MOABU	ACTUALS	2201	101	2580	3,065.39	2,010
MOABU	ACTUALS	2208	101	2580	872.20	2,010
MOABU	ACTUALS	3101	101	2580	660.00	2,010
MOABU	ACTUALS	3201	101	2580	423.66	2,010
MOABU	ACTUALS	3203	101	2580	160.40	2,010
MOABU	ACTUALS	3302	101	2580	86.59	2,010
MOABU	ACTUALS	3312	101	2580	28.43	2,010

2010 All Expend and Revenues

MOABU	ACTUALS	3601	101	2580	550.00	2,010
MOABU	ACTUALS	3702	101	2580	4,410.00	2,010
MOABU	ACTUALS	1101	101	2610	178,688.28	2,010
MOABU	ACTUALS	1201	101	2610	365.93	2,010
MOABU	ACTUALS	1301	101	2610	17,517.19	2,010
MOABU	ACTUALS	1401	101	2610	107,360.91	2,010
MOABU	ACTUALS	2201	101	2610	2,449.58	2,010
MOABU	ACTUALS	3201	101	2610	545.11	2,010
MOABU	ACTUALS	3203	101	2610	229.43	2,010
MOABU	ACTUALS	3601	101	2610	978.96	2,010
MOABU	ACTUALS	3701	101	2610	350.00	2,010
MOABU	ACTUALS	3801	101	2610	1,089.13	2,010
MOABU	ACTUALS	3808	101	2610	0.00	2,010
MOABU	ACTUALS	3814	101	2610	75.00	2,010
MOABU	ACTUALS	5605	101	2610	565.00	2,010
MOABU	ACTUALS	1101	231	261310G	8,986.32	2,010
MOABU	ACTUALS	1301	231	261310G	723.72	2,010
MOABU	ACTUALS	1401	231	261310G	4,747.28	2,010
MOABU	ACTUALS	1101	231	26139G	23,474.88	2,010
MOABU	ACTUALS	1301	231	26139G	1,888.63	2,010
MOABU	ACTUALS	1401	231	26139G	13,588.77	2,010
MOABU	ACTUALS	1101	101	2620	70,273.86	2,010
MOABU	ACTUALS	1301	101	2620	11,379.98	2,010
MOABU	ACTUALS	1401	101	2620	39,279.27	2,010
MOABU	ACTUALS	2201	101	2620	4,048.73	2,010
MOABU	ACTUALS	2301	101	2620	724.87	2,010
MOABU	ACTUALS	3105	101	2620	40.00	2,010
MOABU	ACTUALS	3201	101	2620	20,229.64	2,010
MOABU	ACTUALS	3203	101	2620	4,082.60	2,010
MOABU	ACTUALS	3601	101	2620	8,385.98	2,010
MOABU	ACTUALS	3612	101	2620	2,504.00	2,010
MOABU	ACTUALS	3801	101	2620	80.00	2,010
MOABU	ACTUALS	3805	101	2620	2,714.47	2,010
MOABU	ACTUALS	3901	101	2620	2,721.00	2,010
MOABU	ACTUALS	5401	101	2620	3,000.00	2,010
MOABU	ACTUALS	5411	101	2620	5,509.45	2,010
MOABU	ACTUALS	5604	101	2620	509.00	2,010
MOABU	ACTUALS	5609	101	2620	2,388.00	2,010
MOABU	ACTUALS	1101	231	265810G	158,586.92	2,010
MOABU	ACTUALS	1201	231	265810G	497.90	2,010
MOABU	ACTUALS	1301	231	265810G	16,306.89	2,010
MOABU	ACTUALS	1401	231	265810G	96,482.04	2,010
MOABU	ACTUALS	2201	231	265810G	2,112.15	2,010
MOABU	ACTUALS	3201	231	265810G	382.42	2,010
MOABU	ACTUALS	3203	231	265810G	1,595.46	2,010
MOABU	ACTUALS	3601	231	265810G	360.00	2,010
MOABU	ACTUALS	3701	231	265810G	80.00	2,010
MOABU	ACTUALS	3814	231	265810G	20.00	2,010
MOABU	ACTUALS	3828	231	265810G	237.50	2,010
MOABU	ACTUALS	1101	231	26589G	171,241.97	2,010
MOABU	ACTUALS	1201	231	26589G	2,467.60	2,010
MOABU	ACTUALS	1301	231	26589G	17,474.00	2,010
MOABU	ACTUALS	1401	231	26589G	115,063.91	2,010
MOABU	ACTUALS	2101	231	26589G	1,950.59	2,010
MOABU	ACTUALS	2201	231	26589G	104,212.46	2,010

2010 All Expend and Revenues

MOABU	ACTUALS	2203	231	26589G	77.47	2,010
MOABU	ACTUALS	3101	231	26589G	960.00	2,010
MOABU	ACTUALS	3201	231	26589G	400.59	2,010
MOABU	ACTUALS	3203	231	26589G	2,432.10	2,010
MOABU	ACTUALS	3312	231	26589G	0.72	2,010
MOABU	ACTUALS	3334	231	26589G	2,111.00	2,010
MOABU	ACTUALS	3335	231	26589G	83.58	2,010
MOABU	ACTUALS	3336	231	26589G	1,288.00	2,010
MOABU	ACTUALS	3337	231	26589G	840.00	2,010
MOABU	ACTUALS	3338	231	26589G	1,589.00	2,010
MOABU	ACTUALS	3339	231	26589G	162.93	2,010
MOABU	ACTUALS	3601	231	26589G	0.00	2,010
MOABU	ACTUALS	3701	231	26589G	878.00	2,010
MOABU	ACTUALS	3808	231	26589G	21,947.55	2,010
MOABU	ACTUALS	3814	231	26589G	25.00	2,010
MOABU	ACTUALS	3815	231	26589G	3,000.00	2,010
MOABU	ACTUALS	3828	231	26589G	1,090.00	2,010
MOABU	ACTUALS	5401	231	26589G	30,559.09	2,010
MOABU	ACTUALS	5403	231	26589G	39,620.60	2,010
MOABU	ACTUALS	5411	231	26589G	6,585.60	2,010
MOABU	ACTUALS	5603	231	26589G	37,843.34	2,010
MOABU	ACTUALS	5609	231	26589G	2,340.87	2,010
MOABU	ACTUALS	1101	101	2710	60,553.64	2,010
MOABU	ACTUALS	1301	101	2710	3,893.12	2,010
MOABU	ACTUALS	1401	101	2710	35,042.61	2,010
MOABU	ACTUALS	2101	101	2710	484.52	2,010
MOABU	ACTUALS	2201	101	2710	13,367.08	2,010
MOABU	ACTUALS	2202	101	2710	75.90	2,010
MOABU	ACTUALS	2203	101	2710	4,653.92	2,010
MOABU	ACTUALS	2301	101	2710	1,927.30	2,010
MOABU	ACTUALS	3101	101	2710	158,229.28	2,010
MOABU	ACTUALS	3105	101	2710	102.00	2,010
MOABU	ACTUALS	3121	101	2710	81.91	2,010
MOABU	ACTUALS	3201	101	2710	829.91	2,010
MOABU	ACTUALS	3303	101	2710	110.00	2,010
MOABU	ACTUALS	3501	101	2710	9,312.86	2,010
MOABU	ACTUALS	3601	101	2710	13,502.82	2,010
MOABU	ACTUALS	3701	101	2710	862.94	2,010
MOABU	ACTUALS	3702	101	2710	9,696.00	2,010
MOABU	ACTUALS	3801	101	2710	146.28	2,010
MOABU	ACTUALS	3802	101	2710	386.19	2,010
MOABU	ACTUALS	3805	101	2710	649.00	2,010
MOABU	ACTUALS	3808	101	2710	1,775.00	2,010
MOABU	ACTUALS	3814	101	2710	0.00	2,010
MOABU	ACTUALS	4101	101	2710	76,784.62	2,010
MOABU	ACTUALS	4102	101	2710	98,626.20	2,010
MOABU	ACTUALS	4103	101	2710	44.10	2,010
MOABU	ACTUALS	4201	101	2710	76,746.96	2,010
MOABU	ACTUALS	4301	101	2710	386.03	2,010
MOABU	ACTUALS	5603	101	2710	3,626.73	2,010
MOABU	ACTUALS	3815	101	2720	349,577.00	2,010
MOABU	ACTUALS	3815	231	272010G	146,825.95	2,010
MOABU	ACTUALS	3815	241	272210G	28,686.00	2,010
MOABU	ACTUALS	1101	101	2730	72,002.01	2,010
MOABU	ACTUALS	1201	101	2730	3,420.42	2,010

2010 All Expend and Revenues

MOABU	ACTUALS 1301	101	2730	10,019.10	2,010
MOABU	ACTUALS 1401	101	2730	41,066.09	2,010
MOABU	ACTUALS 2201	101	2730	7.81	2,010
MOABU	ACTUALS 3111	101	2730	-12.50	2,010
MOABU	ACTUALS 3201	101	2730	104.44	2,010

IGC's Expenditures

Unit	Ledger	Acct	Fund	DeptID	Sum Total	Year
					Amt	
MOABU	ACTUALS	6022	101	2110	883.39	2,010
MOABU	ACTUALS	6023	101	2110	18,069.34	2,010
MOABU	ACTUALS	6026	101	2110	12,257.21	2,010
MOABU	ACTUALS	6029	101	2110	2,341.90	2,010
MOABU	ACTUALS	6031	101	2110	28,591.22	2,010
MOABU	ACTUALS	6037	101	2110	34,406.83	2,010
MOABU	ACTUALS	6048	101	2110	202,466.42	2,010
MOABU	ACTUALS	6049	101	2110	8,582.11	2,010
MOABU	ACTUALS	6061	101	2110	7,642.31	2,010
MOABU	ACTUALS	6064	101	2110	12,884.33	2,010
MOABU	ACTUALS	6073	101	2110	72,140.54	2,010
MOABU	ACTUALS	6079	101	2110	133,378.27	2,010
MOABU	ACTUALS	6080	101	2110	42,260.68	2,010
MOABU	ACTUALS	6081	101	2110	18,383.61	2,010
MOABU	ACTUALS	6085	101	2110	50,039.13	2,010
MOABU	ACTUALS	6086	101	2110	7,264.88	2,010
MOABU	ACTUALS	6088	101	2110	32,313.27	2,010
MOABU	ACTUALS	6089	101	2110	45,928.80	2,010
MOABU	ACTUALS	6091	101	2110	21,014.29	2,010
MOABU	ACTUALS	6094	101	2110	6,910.70	2,010
MOABU	ACTUALS	6095	101	2110	30,647.99	2,010
MOABU	ACTUALS	6103	101	2110	24,608.38	2,010
MOABU	ACTUALS	6104	101	2110	13,356.40	2,010
MOABU	ACTUALS	6105	101	2110	7,082.53	2,010
MOABU	ACTUALS	6109	101	2110	15,775.96	2,010
MOABU	ACTUALS	6110	101	2110	86,393.91	2,010
MOABU	ACTUALS	6145	101	2110	2,114.72	2,010
MOABU	ACTUALS	6147	101	2110	8,013.35	2,010
MOABU	ACTUALS	6181	101	2110	14,853.51	2,010
MOABU	ACTUALS	6198	101	2110	24,776.67	2,010
MOABU	ACTUALS	6666	101	2110	924,157.20	2,010
MOABU	ACTUALS	6668	101	2110	258,865.97	2,010
MOABU	ACTUALS	6971	101	2110	23,358.42	2,010
MOABU	ACTUALS	6972	101	2110	8,935.95	2,010
MOABU	ACTUALS	6973	101	2110	32,242.35	2,010
MOABU	ACTUALS	6974	101	2110	36,546.32	2,010
MOABU	ACTUALS	6975	101	2110	141,355.80	2,010
MOABU	ACTUALS	6145	101	2120	822.05	2,010
MOABU	ACTUALS	6147	101	2120	3,115.78	2,010
MOABU	ACTUALS	6211	101	2120	240,488.13	2,010
MOABU	ACTUALS	6222	101	2120	2,813.81	2,010
MOABU	ACTUALS	6923	241	214410G	2,721.00	2,010
MOABU	ACTUALS	6145	101	2210	2,177.10	2,010
MOABU	ACTUALS	6147	101	2210	8,260.18	2,010
MOABU	ACTUALS	6211	101	2210	480,976.22	2,010
MOABU	ACTUALS	6774	101	2210	5,010.61	2,010
MOABU	ACTUALS	6145	101	2220	3,702.11	2,010
MOABU	ACTUALS	6147	101	2220	14,041.94	2,010
MOABU	ACTUALS	6221	101	2220	318,919.72	2,010
MOABU	ACTUALS	6075	101	2240	53,640.42	2,010
MOABU	ACTUALS	6145	101	2240	4,147.79	2,010
MOABU	ACTUALS	6147	101	2240	15,696.12	2,010
MOABU	ACTUALS	6221	101	2240	318,919.70	2,010

IGC's Expenditures

Unit	Ledger	Acct	Fund	DeptID	Sum Total	Year
					Amt	
MOABU	ACTUALS	6222	101	2240	8,793.12	2,010
MOABU	ACTUALS	6223	101	2240	15,884.70	2,010
MOABU	ACTUALS	6562	101	2240	16,522.20	2,010
MOABU	ACTUALS	6001	101	2250	8,873.40	2,010
MOABU	ACTUALS	6222	101	2250	13,154.50	2,010
MOABU	ACTUALS	6668	101	2250	84,113.64	2,010
MOABU	ACTUALS	6222	101	2270	3,376.56	2,010
MOABU	ACTUALS	6145	101	2320	1,568.49	2,010
MOABU	ACTUALS	6147	101	2320	5,951.61	2,010
MOABU	ACTUALS	6211	101	2320	480,976.26	2,010
MOABU	ACTUALS	6222	101	2320	202,874.97	2,010
MOABU	ACTUALS	6223	101	2320	86,231.29	2,010
MOABU	ACTUALS	6774	101	2320	5,010.61	2,010
MOABU	ACTUALS	6085	231	232110G	540.00	2,010
MOABU	ACTUALS	6145	231	232110G	474.20	2,010
MOABU	ACTUALS	6147	231	232110G	1,843.55	2,010
MOABU	ACTUALS	6222	231	232110G	3,191.00	2,010
MOABU	ACTUALS	6232	231	232110G	3,191.00	2,010
MOABU	ACTUALS	6923	231	232110G	8,450.00	2,010
MOABU	ACTUALS	6022	231	23219G	3.00	2,010
MOABU	ACTUALS	6061	231	23219G	34.00	2,010
MOABU	ACTUALS	6085	231	23219G	1,706.50	2,010
MOABU	ACTUALS	6091	231	23219G	59.00	2,010
MOABU	ACTUALS	6095	231	23219G	376.00	2,010
MOABU	ACTUALS	6103	231	23219G	1,358.00	2,010
MOABU	ACTUALS	6104	231	23219G	99.00	2,010
MOABU	ACTUALS	6105	231	23219G	162.00	2,010
MOABU	ACTUALS	6109	231	23219G	9.00	2,010
MOABU	ACTUALS	6110	231	23219G	437.00	2,010
MOABU	ACTUALS	6145	231	23219G	525.29	2,010
MOABU	ACTUALS	6147	231	23219G	1,896.26	2,010
MOABU	ACTUALS	6181	231	23219G	209.00	2,010
MOABU	ACTUALS	6198	231	23219G	302.00	2,010
MOABU	ACTUALS	6222	231	23219G	2,423.39	2,010
MOABU	ACTUALS	6232	231	23219G	2,400.00	2,010
MOABU	ACTUALS	6145	101	2330	1,306.77	2,010
MOABU	ACTUALS	6147	101	2330	4,941.44	2,010
MOABU	ACTUALS	6222	101	2330	3,798.62	2,010
MOABU	ACTUALS	6668	101	2330	483,849.20	2,010
MOABU	ACTUALS	6085	231	233310G	6,340.47	2,010
MOABU	ACTUALS	6145	231	233310G	6,438.89	2,010
MOABU	ACTUALS	6147	231	233310G	25,036.00	2,010
MOABU	ACTUALS	6222	231	233310G	30,564.00	2,010
MOABU	ACTUALS	6232	231	233310G	30,564.00	2,010
MOABU	ACTUALS	6923	231	233310G	75,985.00	2,010
MOABU	ACTUALS	6085	231	23339G	2,706.64	2,010
MOABU	ACTUALS	6145	231	23339G	6,774.56	2,010
MOABU	ACTUALS	6147	231	23339G	25,166.26	2,010
MOABU	ACTUALS	6222	231	23339G	28,750.00	2,010
MOABU	ACTUALS	6232	231	23339G	28,754.00	2,010
MOABU	ACTUALS	6022	241	233410G	5.00	2,010
MOABU	ACTUALS	6091	241	233410G	95.00	2,010
MOABU	ACTUALS	6095	241	233410G	602.00	2,010

IGC's Expenditures

Unit	Ledger	Acct	Fund	DeptID	Sum Total	Year
					Amt	
MOABU	ACTUALS	6103	241	233410G	2,170.00	2,010
MOABU	ACTUALS	6104	241	233410G	110.00	2,010
MOABU	ACTUALS	6105	241	233410G	260.00	2,010
MOABU	ACTUALS	6109	241	233410G	15.00	2,010
MOABU	ACTUALS	6110	241	233410G	699.00	2,010
MOABU	ACTUALS	6222	241	233410G	95.00	2,010
MOABU	ACTUALS	6232	241	233410G	98.00	2,010
MOABU	ACTUALS	6022	241	23360GA	6.00	2,010
MOABU	ACTUALS	6061	241	23360GA	45.00	2,010
MOABU	ACTUALS	6091	241	23360GA	241.00	2,010
MOABU	ACTUALS	6095	241	23360GA	400.00	2,010
MOABU	ACTUALS	6103	241	23360GA	734.00	2,010
MOABU	ACTUALS	6104	241	23360GA	274.00	2,010
MOABU	ACTUALS	6105	241	23360GA	271.00	2,010
MOABU	ACTUALS	6109	241	23360GA	17.00	2,010
MOABU	ACTUALS	6110	241	23360GA	667.00	2,010
MOABU	ACTUALS	6145	241	23360GA	736.83	2,010
MOABU	ACTUALS	6147	241	23360GA	1,532.49	2,010
MOABU	ACTUALS	6181	241	23360GA	614.00	2,010
MOABU	ACTUALS	6198	241	23360GA	894.00	2,010
MOABU	ACTUALS	6085	231	234710G	825.00	2,010
MOABU	ACTUALS	6145	231	234710G	5,055.36	2,010
MOABU	ACTUALS	6147	231	234710G	19,656.95	2,010
MOABU	ACTUALS	6222	231	234710G	27,104.00	2,010
MOABU	ACTUALS	6232	231	234710G	27,104.00	2,010
MOABU	ACTUALS	6085	231	23479G	3,163.17	2,010
MOABU	ACTUALS	6145	231	23479G	5,283.43	2,010
MOABU	ACTUALS	6147	231	23479G	19,653.45	2,010
MOABU	ACTUALS	6222	231	23479G	29,625.60	2,010
MOABU	ACTUALS	6232	231	23479G	29,629.00	2,010
MOABU	ACTUALS	6145	101	2360	1,921.29	2,010
MOABU	ACTUALS	6147	101	2360	7,282.62	2,010
MOABU	ACTUALS	6222	101	2360	58,597.38	2,010
MOABU	ACTUALS	6223	101	2360	27,230.94	2,010
MOABU	ACTUALS	6232	101	2360	662,178.66	2,010
MOABU	ACTUALS	6145	241	23638G	75.39	2,010
MOABU	ACTUALS	6147	241	23638G	291.13	2,010
MOABU	ACTUALS	6222	241	23638G	8,410.00	2,010
MOABU	ACTUALS	6224	241	23638G	8,409.00	2,010
MOABU	ACTUALS	6232	241	23638G	8,409.00	2,010
MOABU	ACTUALS	6022	231	236810G	13.00	2,010
MOABU	ACTUALS	6061	231	236810G	92.00	2,010
MOABU	ACTUALS	6091	231	236810G	212.00	2,010
MOABU	ACTUALS	6095	231	236810G	1,349.00	2,010
MOABU	ACTUALS	6103	231	236810G	4,866.00	2,010
MOABU	ACTUALS	6104	231	236810G	247.00	2,010
MOABU	ACTUALS	6105	231	236810G	583.00	2,010
MOABU	ACTUALS	6109	231	236810G	36.00	2,010
MOABU	ACTUALS	6110	231	236810G	1,567.00	2,010
MOABU	ACTUALS	6145	231	236810G	824.54	2,010
MOABU	ACTUALS	6147	231	236810G	3,206.05	2,010
MOABU	ACTUALS	6181	231	236810G	562.00	2,010
MOABU	ACTUALS	6198	231	236810G	813.00	2,010

IGC's Expenditures

Unit	Ledger	Acct	Fund	DeptID	Sum Total	Year
					Amt	
MOABU	ACTUALS	6222	231	23688G	-96.00	2,010
MOABU	ACTUALS	6224	231	23688G	-96.00	2,010
MOABU	ACTUALS	6232	231	23688G	-95.00	2,010
MOABU	ACTUALS	6022	231	23689G	16.01	2,010
MOABU	ACTUALS	6061	231	23689G	91.01	2,010
MOABU	ACTUALS	6091	231	23689G	266.00	2,010
MOABU	ACTUALS	6095	231	23689G	1,687.00	2,010
MOABU	ACTUALS	6103	231	23689G	6,082.00	2,010
MOABU	ACTUALS	6104	231	23689G	263.99	2,010
MOABU	ACTUALS	6105	231	23689G	729.00	2,010
MOABU	ACTUALS	6109	231	23689G	42.99	2,010
MOABU	ACTUALS	6110	231	23689G	1,959.00	2,010
MOABU	ACTUALS	6145	231	23689G	41.28	2,010
MOABU	ACTUALS	6147	231	23689G	422.26	2,010
MOABU	ACTUALS	6181	231	23689G	556.00	2,010
MOABU	ACTUALS	6198	231	23689G	804.00	2,010
MOABU	ACTUALS	6022	241	236910G	19.00	2,010
MOABU	ACTUALS	6061	241	236910G	114.00	2,010
MOABU	ACTUALS	6091	241	236910G	313.00	2,010
MOABU	ACTUALS	6095	241	236910G	1,985.00	2,010
MOABU	ACTUALS	6103	241	236910G	7,155.00	2,010
MOABU	ACTUALS	6104	241	236910G	363.00	2,010
MOABU	ACTUALS	6105	241	236910G	858.00	2,010
MOABU	ACTUALS	6109	241	236910G	51.00	2,010
MOABU	ACTUALS	6110	241	236910G	2,304.00	2,010
MOABU	ACTUALS	6145	241	236910G	911.42	2,010
MOABU	ACTUALS	6147	241	236910G	3,544.16	2,010
MOABU	ACTUALS	6181	241	236910G	692.00	2,010
MOABU	ACTUALS	6198	241	236910G	1,001.00	2,010
MOABU	ACTUALS	6022	241	23699G	19.00	2,010
MOABU	ACTUALS	6061	241	23699G	115.00	2,010
MOABU	ACTUALS	6091	241	23699G	313.00	2,010
MOABU	ACTUALS	6095	241	23699G	1,985.00	2,010
MOABU	ACTUALS	6103	241	23699G	7,155.00	2,010
MOABU	ACTUALS	6104	241	23699G	332.00	2,010
MOABU	ACTUALS	6105	241	23699G	858.00	2,010
MOABU	ACTUALS	6109	241	23699G	51.00	2,010
MOABU	ACTUALS	6110	241	23699G	2,304.00	2,010
MOABU	ACTUALS	6145	241	23699G	624.49	2,010
MOABU	ACTUALS	6147	241	23699G	1,881.32	2,010
MOABU	ACTUALS	6181	241	23699G	698.00	2,010
MOABU	ACTUALS	6198	241	23699G	1,010.00	2,010
MOABU	ACTUALS	6222	101	2370	3,306.21	2,010
MOABU	ACTUALS	6223	101	2370	2,269.23	2,010
MOABU	ACTUALS	6145	241	23708G	2,578.71	2,010
MOABU	ACTUALS	6147	241	23708G	9,244.65	2,010
MOABU	ACTUALS	6222	241	23708G	4,838.00	2,010
MOABU	ACTUALS	6224	241	23708G	4,837.00	2,010
MOABU	ACTUALS	6232	241	23708G	4,837.00	2,010
MOABU	ACTUALS	6145	101	2380	848.82	2,010
MOABU	ACTUALS	6147	101	2380	3,196.10	2,010
MOABU	ACTUALS	6222	101	2380	32,640.08	2,010
MOABU	ACTUALS	6223	101	2380	18,153.95	2,010

IGC's Expenditures

Unit	Ledger	Acct	Fund	DeptID	Sum Total	Year
					Amt	
MOABU	ACTUALS	6241	101	2380	177,977.53	2,010
MOABU	ACTUALS	6668	101	2380	7,749.84	2,010
MOABU	ACTUALS	6145	231	238610G	4,665.05	2,010
MOABU	ACTUALS	6147	231	238610G	18,139.38	2,010
MOABU	ACTUALS	6227	231	238610G	55,833.00	2,010
MOABU	ACTUALS	6923	231	238610G	31,193.86	2,010
MOABU	ACTUALS	6145	231	23869G	5,059.36	2,010
MOABU	ACTUALS	6147	231	23869G	18,671.39	2,010
MOABU	ACTUALS	6227	231	23869G	30,814.00	2,010
MOABU	ACTUALS	6145	101	2410	1,206.75	2,010
MOABU	ACTUALS	6147	101	2410	4,532.68	2,010
MOABU	ACTUALS	6211	101	2410	480,976.23	2,010
MOABU	ACTUALS	6222	101	2410	19,837.27	2,010
MOABU	ACTUALS	6223	101	2410	9,076.98	2,010
MOABU	ACTUALS	6562	101	2410	2,125.00	2,010
MOABU	ACTUALS	6145	101	2430	2,577.41	2,010
MOABU	ACTUALS	6147	101	2430	9,714.07	2,010
MOABU	ACTUALS	6222	101	2430	6,260.71	2,010
MOABU	ACTUALS	6223	101	2430	9,076.97	2,010
MOABU	ACTUALS	6241	101	2430	46,836.17	2,010
MOABU	ACTUALS	6145	101	2450	2,444.11	2,010
MOABU	ACTUALS	6147	101	2450	9,295.42	2,010
MOABU	ACTUALS	6222	101	2450	51,562.89	2,010
MOABU	ACTUALS	6223	101	2450	13,615.48	2,010
MOABU	ACTUALS	6241	101	2450	140,508.55	2,010
MOABU	ACTUALS	6145	101	2460	8,179.87	2,010
MOABU	ACTUALS	6147	101	2460	29,184.42	2,010
MOABU	ACTUALS	6222	101	2460	22,440.05	2,010
MOABU	ACTUALS	6223	101	2460	24,961.67	2,010
MOABU	ACTUALS	6241	101	2460	309,118.84	2,010
MOABU	ACTUALS	6145	231	247110G	574.82	2,010
MOABU	ACTUALS	6147	231	247110G	2,234.90	2,010
MOABU	ACTUALS	6222	231	247110G	1,847.00	2,010
MOABU	ACTUALS	6246	231	247110G	1,848.00	2,010
MOABU	ACTUALS	6923	231	247110G	8,174.00	2,010
MOABU	ACTUALS	6145	231	24719G	645.62	2,010
MOABU	ACTUALS	6147	231	24719G	2,316.60	2,010
MOABU	ACTUALS	6246	231	24719G	5,689.50	2,010
MOABU	ACTUALS	6145	231	248910G	3,475.60	2,010
MOABU	ACTUALS	6147	231	248910G	13,513.91	2,010
MOABU	ACTUALS	6209	231	248910G	6,506.00	2,010
MOABU	ACTUALS	6245	231	248910G	19,518.00	2,010
MOABU	ACTUALS	6923	231	248910G	40,058.00	2,010
MOABU	ACTUALS	6145	231	24899G	3,906.00	2,010
MOABU	ACTUALS	6147	231	24899G	14,419.99	2,010
MOABU	ACTUALS	6209	231	24899G	9,857.50	2,010
MOABU	ACTUALS	6245	231	24899G	29,572.50	2,010
MOABU	ACTUALS	6022	241	249310G	68.00	2,010
MOABU	ACTUALS	6061	241	249310G	828.00	2,010
MOABU	ACTUALS	6091	241	249310G	1,091.00	2,010
MOABU	ACTUALS	6095	241	249310G	6,914.00	2,010
MOABU	ACTUALS	6103	241	249310G	24,921.00	2,010
MOABU	ACTUALS	6104	241	249310G	2,386.00	2,010

IGC's Expenditures

Unit	Ledger	Acct	Fund	DeptID	Sum Total	Year
					Amt	
MOABU	ACTUALS	6105	241	249310G	2,989.00	2,010
MOABU	ACTUALS	6109	241	249310G	179.00	2,010
MOABU	ACTUALS	6110	241	249310G	8,026.00	2,010
MOABU	ACTUALS	6145	241	249310G	3,556.11	2,010
MOABU	ACTUALS	6147	241	249310G	13,827.63	2,010
MOABU	ACTUALS	6181	241	249310G	5,020.00	2,010
MOABU	ACTUALS	6198	241	249310G	7,260.00	2,010
MOABU	ACTUALS	6246	241	249310G	43,086.00	2,010
MOABU	ACTUALS	6923	241	249310G	1,915.00	2,010
MOABU	ACTUALS	6145	241	24939G	3,214.09	2,010
MOABU	ACTUALS	6147	241	24939G	11,894.83	2,010
MOABU	ACTUALS	6246	241	24939G	60,532.00	2,010
MOABU	ACTUALS	6145	101	2510	61.24	2,010
MOABU	ACTUALS	6147	101	2510	159.53	2,010
MOABU	ACTUALS	6211	101	2510	480,976.25	2,010
MOABU	ACTUALS	6222	101	2510	30,555.38	2,010
MOABU	ACTUALS	6223	101	2510	22,692.44	2,010
MOABU	ACTUALS	6224	101	2510	96.00	2,010
MOABU	ACTUALS	6232	101	2510	95.00	2,010
MOABU	ACTUALS	6774	101	2510	5,010.59	2,010
MOABU	ACTUALS	6145	101	2520	1,859.14	2,010
MOABU	ACTUALS	6147	101	2520	7,044.89	2,010
MOABU	ACTUALS	6222	101	2520	1,055.18	2,010
MOABU	ACTUALS	6223	101	2520	9,076.99	2,010
MOABU	ACTUALS	6290	101	2520	59,521.14	2,010
MOABU	ACTUALS	6022	241	253910G	10.00	2,010
MOABU	ACTUALS	6061	241	253910G	331.00	2,010
MOABU	ACTUALS	6091	241	253910G	164.00	2,010
MOABU	ACTUALS	6095	241	253910G	1,039.00	2,010
MOABU	ACTUALS	6103	241	253910G	3,746.00	2,010
MOABU	ACTUALS	6104	241	253910G	954.00	2,010
MOABU	ACTUALS	6105	241	253910G	449.00	2,010
MOABU	ACTUALS	6109	241	253910G	27.00	2,010
MOABU	ACTUALS	6110	241	253910G	1,206.00	2,010
MOABU	ACTUALS	6145	241	253910G	3,953.24	2,010
MOABU	ACTUALS	6147	241	253910G	15,039.25	2,010
MOABU	ACTUALS	6181	241	253910G	2,008.00	2,010
MOABU	ACTUALS	6198	241	253910G	2,904.00	2,010
MOABU	ACTUALS	6222	241	253910G	4,863.00	2,010
MOABU	ACTUALS	6290	241	253910G	4,865.00	2,010
MOABU	ACTUALS	6022	241	25398G	10.00	2,010
MOABU	ACTUALS	6061	241	25398G	72.00	2,010
MOABU	ACTUALS	6091	241	25398G	381.00	2,010
MOABU	ACTUALS	6095	241	25398G	679.00	2,010
MOABU	ACTUALS	6103	241	25398G	2,931.00	2,010
MOABU	ACTUALS	6104	241	25398G	1,246.00	2,010
MOABU	ACTUALS	6105	241	25398G	445.00	2,010
MOABU	ACTUALS	6109	241	25398G	27.00	2,010
MOABU	ACTUALS	6110	241	25398G	1,101.00	2,010
MOABU	ACTUALS	6145	241	25398G	-108.11	2,010
MOABU	ACTUALS	6147	241	25398G	-250.56	2,010
MOABU	ACTUALS	6181	241	25398G	2,775.00	2,010
MOABU	ACTUALS	6198	241	25398G	4,041.00	2,010

IGC's Expenditures

Unit	Ledger	Acct	Fund	DeptID	Sum Total	Year
					Amt	
MOABU	ACTUALS	6222	241	25398G	-2,554.00	2,010
MOABU	ACTUALS	6290	241	25398G	-2,488.10	2,010
MOABU	ACTUALS	6145	101	2540	5,445.10	2,010
MOABU	ACTUALS	6147	101	2540	20,680.91	2,010
MOABU	ACTUALS	6214	101	2540	206,898.92	2,010
MOABU	ACTUALS	6222	101	2540	22,791.78	2,010
MOABU	ACTUALS	6223	101	2540	27,230.94	2,010
MOABU	ACTUALS	6290	101	2540	178,563.47	2,010
MOABU	ACTUALS	6022	231	25448G	35.00	2,010
MOABU	ACTUALS	6061	231	25448G	51.00	2,010
MOABU	ACTUALS	6091	231	25448G	561.00	2,010
MOABU	ACTUALS	6095	231	25448G	3,561.00	2,010
MOABU	ACTUALS	6103	231	25448G	12,838.00	2,010
MOABU	ACTUALS	6104	231	25448G	149.00	2,010
MOABU	ACTUALS	6105	231	25448G	1,539.00	2,010
MOABU	ACTUALS	6109	231	25448G	92.00	2,010
MOABU	ACTUALS	6110	231	25448G	4,134.00	2,010
MOABU	ACTUALS	6145	231	25448G	409.50	2,010
MOABU	ACTUALS	6147	231	25448G	1,526.66	2,010
MOABU	ACTUALS	6181	231	25448G	313.00	2,010
MOABU	ACTUALS	6198	231	25448G	453.00	2,010
MOABU	ACTUALS	6222	231	25448G	13,395.00	2,010
MOABU	ACTUALS	6290	231	25448G	13,396.00	2,010
MOABU	ACTUALS	6145	241	25454G	716.44	2,010
MOABU	ACTUALS	6147	241	25454G	2,684.31	2,010
MOABU	ACTUALS	6022	241	25508G	2.00	2,010
MOABU	ACTUALS	6091	241	25508G	33.00	2,010
MOABU	ACTUALS	6095	241	25508G	212.00	2,010
MOABU	ACTUALS	6103	241	25508G	766.00	2,010
MOABU	ACTUALS	6105	241	25508G	91.00	2,010
MOABU	ACTUALS	6109	241	25508G	5.00	2,010
MOABU	ACTUALS	6110	241	25508G	246.00	2,010
MOABU	ACTUALS	6145	241	25508G	429.77	2,010
MOABU	ACTUALS	6147	241	25508G	1,648.69	2,010
MOABU	ACTUALS	6222	241	25508G	-631.00	2,010
MOABU	ACTUALS	6290	241	25508G	-626.00	2,010
MOABU	ACTUALS	6145	101	2560	7,119.90	2,010
MOABU	ACTUALS	6147	101	2560	26,989.16	2,010
MOABU	ACTUALS	6214	101	2560	88,670.94	2,010
MOABU	ACTUALS	6222	101	2560	19,626.23	2,010
MOABU	ACTUALS	6223	101	2560	27,230.90	2,010
MOABU	ACTUALS	6290	101	2560	297,605.72	2,010
MOABU	ACTUALS	6757	101	2560	487.64	2,010
MOABU	ACTUALS	6001	101	2580	11,784.32	2,010
MOABU	ACTUALS	6145	101	2580	163.23	2,010
MOABU	ACTUALS	6147	101	2580	614.89	2,010
MOABU	ACTUALS	6222	101	2580	26,801.46	2,010
MOABU	ACTUALS	6223	101	2580	15,884.73	2,010
MOABU	ACTUALS	6232	101	2580	165,544.64	2,010
MOABU	ACTUALS	6145	101	2610	2,778.77	2,010
MOABU	ACTUALS	6147	101	2610	10,491.38	2,010
MOABU	ACTUALS	6211	101	2610	240,488.10	2,010
MOABU	ACTUALS	6222	101	2610	8,230.37	2,010

IGC's Expenditures

Unit	Ledger	Acct	Fund	DeptID	Sum Total	Year
					Amt	
MOABU	ACTUALS	6223	101	2610	22,692.43	2,010
MOABU	ACTUALS	6145	231	261310G	134.64	2,010
MOABU	ACTUALS	6147	231	261310G	523.45	2,010
MOABU	ACTUALS	6222	231	261310G	878.00	2,010
MOABU	ACTUALS	6224	231	261310G	878.00	2,010
MOABU	ACTUALS	6923	231	261310G	1,425.00	2,010
MOABU	ACTUALS	6022	231	26139G	4.00	2,010
MOABU	ACTUALS	6061	231	26139G	34.00	2,010
MOABU	ACTUALS	6091	231	26139G	67.00	2,010
MOABU	ACTUALS	6095	231	26139G	427.00	2,010
MOABU	ACTUALS	6103	231	26139G	1,541.00	2,010
MOABU	ACTUALS	6104	231	26139G	99.00	2,010
MOABU	ACTUALS	6105	231	26139G	184.00	2,010
MOABU	ACTUALS	6109	231	26139G	11.00	2,010
MOABU	ACTUALS	6110	231	26139G	496.00	2,010
MOABU	ACTUALS	6145	231	26139G	356.17	2,010
MOABU	ACTUALS	6147	231	26139G	1,342.33	2,010
MOABU	ACTUALS	6181	231	26139G	209.00	2,010
MOABU	ACTUALS	6198	231	26139G	302.00	2,010
MOABU	ACTUALS	6213	231	26139G	4,379.31	2,010
MOABU	ACTUALS	6145	101	2620	1,139.61	2,010
MOABU	ACTUALS	6147	101	2620	4,254.09	2,010
MOABU	ACTUALS	6221	101	2620	159,459.88	2,010
MOABU	ACTUALS	6222	101	2620	13,998.65	2,010
MOABU	ACTUALS	6022	231	265810G	46.00	2,010
MOABU	ACTUALS	6061	231	265810G	414.00	2,010
MOABU	ACTUALS	6091	231	265810G	739.00	2,010
MOABU	ACTUALS	6095	231	265810G	4,683.00	2,010
MOABU	ACTUALS	6103	231	265810G	0.00	2,010
MOABU	ACTUALS	6104	231	265810G	1,193.00	2,010
MOABU	ACTUALS	6105	231	265810G	1,446.46	2,010
MOABU	ACTUALS	6109	231	265810G	121.00	2,010
MOABU	ACTUALS	6110	231	265810G	0.00	2,010
MOABU	ACTUALS	6145	231	265810G	2,538.11	2,010
MOABU	ACTUALS	6147	231	265810G	9,868.48	2,010
MOABU	ACTUALS	6181	231	265810G	2,510.00	2,010
MOABU	ACTUALS	6198	231	265810G	3,630.00	2,010
MOABU	ACTUALS	6213	231	265810G	26,812.00	2,010
MOABU	ACTUALS	6085	231	26589G	64.52	2,010
MOABU	ACTUALS	6145	231	26589G	2,811.69	2,010
MOABU	ACTUALS	6147	231	26589G	9,688.49	2,010
MOABU	ACTUALS	6213	231	26589G	110,011.98	2,010
MOABU	ACTUALS	6145	101	2710	931.55	2,010
MOABU	ACTUALS	6147	101	2710	3,531.12	2,010
MOABU	ACTUALS	6211	101	2710	240,488.13	2,010
MOABU	ACTUALS	6222	101	2710	26,097.99	2,010
MOABU	ACTUALS	6223	101	2710	11,346.21	2,010
MOABU	ACTUALS	6562	101	2710	13,714.00	2,010
MOABU	ACTUALS	6222	101	2720	7,175.19	2,010
MOABU	ACTUALS	6223	101	2720	11,346.23	2,010
MOABU	ACTUALS	6241	101	2720	18,734.48	2,010
MOABU	ACTUALS	6022	231	272010G	13.00	2,010
MOABU	ACTUALS	6091	231	272010G	211.00	2,010

IGC's Expenditures

Unit	Ledger	Acct	Fund	DeptID	Sum Total	Year
					Amt	
MOABU	ACTUALS	6095	231	272010G	1,338.00	2,010
MOABU	ACTUALS	6103	231	272010G	4,823.00	2,010
MOABU	ACTUALS	6105	231	272010G	578.00	2,010
MOABU	ACTUALS	6109	231	272010G	34.00	2,010
MOABU	ACTUALS	6110	231	272010G	1,553.00	2,010
MOABU	ACTUALS	6923	241	272210G	8,797.00	2,010
MOABU	ACTUALS	6145	101	2730	1,250.41	2,010
MOABU	ACTUALS	6147	101	2730	4,536.83	2,010

CSP IGC's

IGC Expenditures from CSP Agencies

Unit	Ledger	Acct	Fund	DeptID	Sum Total	Year
					Amt	
MOABU	ACTUALS	6022	101	2110	883.39	2,010
MOABU	ACTUALS	6026	101	2110	12,257.21	2,010
MOABU	ACTUALS	6029	101	2110	2,341.90	2,010
MOABU	ACTUALS	6037	101	2110	34,406.83	2,010
MOABU	ACTUALS	6048	101	2110	202,466.42	2,010
MOABU	ACTUALS	6049	101	2110	8,582.11	2,010
MOABU	ACTUALS	6061	101	2110	7,642.31	2,010
MOABU	ACTUALS	6064	101	2110	12,884.33	2,010
MOABU	ACTUALS	6073	101	2110	72,140.54	2,010
MOABU	ACTUALS	6079	101	2110	133,378.27	2,010
MOABU	ACTUALS	6080	101	2110	42,260.68	2,010
MOABU	ACTUALS	6088	101	2110	32,313.27	2,010
MOABU	ACTUALS	6089	101	2110	45,928.80	2,010
MOABU	ACTUALS	6091	101	2110	21,014.29	2,010
MOABU	ACTUALS	6094	101	2110	6,910.70	2,010
MOABU	ACTUALS	6095	101	2110	30,647.99	2,010
MOABU	ACTUALS	6103	101	2110	24,608.38	2,010
MOABU	ACTUALS	6104	101	2110	13,356.40	2,010
MOABU	ACTUALS	6105	101	2110	7,082.53	2,010
MOABU	ACTUALS	6109	101	2110	15,775.96	2,010
MOABU	ACTUALS	6110	101	2110	86,393.91	2,010
MOABU	ACTUALS	6145	101	2110	2,114.72	2,010
MOABU	ACTUALS	6147	101	2110	8,013.35	2,010
MOABU	ACTUALS	6181	101	2110	14,853.51	2,010
MOABU	ACTUALS	6198	101	2110	24,776.67	2,010
MOABU	ACTUALS	6666	101	2110	924,157.20	2,010
MOABU	ACTUALS	6668	101	2110	258,865.97	2,010
MOABU	ACTUALS	6145	101	2120	822.05	2,010
MOABU	ACTUALS	6147	101	2120	3,115.78	2,010
MOABU	ACTUALS	6145	101	2210	2,177.10	2,010
MOABU	ACTUALS	6147	101	2210	8,260.18	2,010
MOABU	ACTUALS	6145	101	2220	3,702.11	2,010
MOABU	ACTUALS	6147	101	2220	14,041.94	2,010
MOABU	ACTUALS	6075	101	2240	53,640.42	2,010
MOABU	ACTUALS	6145	101	2240	4,147.79	2,010
MOABU	ACTUALS	6147	101	2240	15,696.12	2,010
MOABU	ACTUALS	6668	101	2250	84,113.64	2,010
MOABU	ACTUALS	6145	101	2320	1,568.49	2,010
MOABU	ACTUALS	6147	101	2320	5,951.61	2,010
MOABU	ACTUALS	6145	231	232110G	474.20	2,010
MOABU	ACTUALS	6147	231	232110G	1,843.55	2,010
MOABU	ACTUALS	6022	231	23219G	3.00	2,010
MOABU	ACTUALS	6061	231	23219G	34.00	2,010
MOABU	ACTUALS	6091	231	23219G	59.00	2,010
MOABU	ACTUALS	6095	231	23219G	376.00	2,010
MOABU	ACTUALS	6103	231	23219G	1,358.00	2,010
MOABU	ACTUALS	6104	231	23219G	99.00	2,010
MOABU	ACTUALS	6105	231	23219G	162.00	2,010
MOABU	ACTUALS	6109	231	23219G	9.00	2,010
MOABU	ACTUALS	6110	231	23219G	437.00	2,010
MOABU	ACTUALS	6145	231	23219G	525.29	2,010
MOABU	ACTUALS	6147	231	23219G	1,896.26	2,010

CSP IGC's

MOABU	ACTUALS 6181	231	23219G	209.00	2,010
MOABU	ACTUALS 6198	231	23219G	302.00	2,010
MOABU	ACTUALS 6145	101	2330	1,306.77	2,010
MOABU	ACTUALS 6147	101	2330	4,941.44	2,010
MOABU	ACTUALS 6668	101	2330	483,849.20	2,010
MOABU	ACTUALS 6145	231	233310G	6,438.89	2,010
MOABU	ACTUALS 6147	231	233310G	25,036.00	2,010
MOABU	ACTUALS 6145	231	23339G	6,774.56	2,010
MOABU	ACTUALS 6147	231	23339G	25,166.26	2,010
MOABU	ACTUALS 6022	241	233410G	5.00	2,010
MOABU	ACTUALS 6091	241	233410G	95.00	2,010
MOABU	ACTUALS 6095	241	233410G	602.00	2,010
MOABU	ACTUALS 6103	241	233410G	2,170.00	2,010
MOABU	ACTUALS 6104	241	233410G	110.00	2,010
MOABU	ACTUALS 6105	241	233410G	260.00	2,010
MOABU	ACTUALS 6109	241	233410G	15.00	2,010
MOABU	ACTUALS 6110	241	233410G	699.00	2,010
MOABU	ACTUALS 6022	241	23360GA	6.00	2,010
MOABU	ACTUALS 6061	241	23360GA	45.00	2,010
MOABU	ACTUALS 6091	241	23360GA	241.00	2,010
MOABU	ACTUALS 6095	241	23360GA	400.00	2,010
MOABU	ACTUALS 6103	241	23360GA	734.00	2,010
MOABU	ACTUALS 6104	241	23360GA	274.00	2,010
MOABU	ACTUALS 6105	241	23360GA	271.00	2,010
MOABU	ACTUALS 6109	241	23360GA	17.00	2,010
MOABU	ACTUALS 6110	241	23360GA	667.00	2,010
MOABU	ACTUALS 6145	241	23360GA	736.83	2,010
MOABU	ACTUALS 6147	241	23360GA	1,532.49	2,010
MOABU	ACTUALS 6181	241	23360GA	614.00	2,010
MOABU	ACTUALS 6198	241	23360GA	894.00	2,010
MOABU	ACTUALS 6145	231	234710G	5,055.36	2,010
MOABU	ACTUALS 6147	231	234710G	19,656.95	2,010
MOABU	ACTUALS 6145	231	23479G	5,283.43	2,010
MOABU	ACTUALS 6147	231	23479G	19,653.45	2,010
MOABU	ACTUALS 6145	101	2360	1,921.29	2,010
MOABU	ACTUALS 6147	101	2360	7,282.62	2,010
MOABU	ACTUALS 6145	241	23638G	75.39	2,010
MOABU	ACTUALS 6147	241	23638G	291.13	2,010
MOABU	ACTUALS 6022	231	236810G	13.00	2,010
MOABU	ACTUALS 6061	231	236810G	92.00	2,010
MOABU	ACTUALS 6091	231	236810G	212.00	2,010
MOABU	ACTUALS 6095	231	236810G	1,349.00	2,010
MOABU	ACTUALS 6103	231	236810G	4,866.00	2,010
MOABU	ACTUALS 6104	231	236810G	247.00	2,010
MOABU	ACTUALS 6105	231	236810G	583.00	2,010
MOABU	ACTUALS 6109	231	236810G	36.00	2,010
MOABU	ACTUALS 6110	231	236810G	1,567.00	2,010
MOABU	ACTUALS 6145	231	236810G	824.54	2,010
MOABU	ACTUALS 6147	231	236810G	3,206.05	2,010
MOABU	ACTUALS 6181	231	236810G	562.00	2,010
MOABU	ACTUALS 6198	231	236810G	813.00	2,010
MOABU	ACTUALS 6022	231	23689G	16.01	2,010
MOABU	ACTUALS 6061	231	23689G	91.01	2,010
MOABU	ACTUALS 6091	231	23689G	266.00	2,010
MOABU	ACTUALS 6095	231	23689G	1,687.00	2,010

CSP IGC's

MOABU	ACTUALS 6103	231	23689G	6,082.00	2,010
MOABU	ACTUALS 6104	231	23689G	263.99	2,010
MOABU	ACTUALS 6105	231	23689G	729.00	2,010
MOABU	ACTUALS 6109	231	23689G	42.99	2,010
MOABU	ACTUALS 6110	231	23689G	1,959.00	2,010
MOABU	ACTUALS 6145	231	23689G	41.28	2,010
MOABU	ACTUALS 6147	231	23689G	422.26	2,010
MOABU	ACTUALS 6181	231	23689G	556.00	2,010
MOABU	ACTUALS 6198	231	23689G	804.00	2,010
MOABU	ACTUALS 6022	241	236910G	19.00	2,010
MOABU	ACTUALS 6061	241	236910G	114.00	2,010
MOABU	ACTUALS 6091	241	236910G	313.00	2,010
MOABU	ACTUALS 6095	241	236910G	1,985.00	2,010
MOABU	ACTUALS 6103	241	236910G	7,155.00	2,010
MOABU	ACTUALS 6104	241	236910G	363.00	2,010
MOABU	ACTUALS 6105	241	236910G	858.00	2,010
MOABU	ACTUALS 6109	241	236910G	51.00	2,010
MOABU	ACTUALS 6110	241	236910G	2,304.00	2,010
MOABU	ACTUALS 6145	241	236910G	911.42	2,010
MOABU	ACTUALS 6147	241	236910G	3,544.16	2,010
MOABU	ACTUALS 6181	241	236910G	692.00	2,010
MOABU	ACTUALS 6198	241	236910G	1,001.00	2,010
MOABU	ACTUALS 6022	241	23699G	19.00	2,010
MOABU	ACTUALS 6061	241	23699G	115.00	2,010
MOABU	ACTUALS 6091	241	23699G	313.00	2,010
MOABU	ACTUALS 6095	241	23699G	1,985.00	2,010
MOABU	ACTUALS 6103	241	23699G	7,155.00	2,010
MOABU	ACTUALS 6104	241	23699G	332.00	2,010
MOABU	ACTUALS 6105	241	23699G	858.00	2,010
MOABU	ACTUALS 6109	241	23699G	51.00	2,010
MOABU	ACTUALS 6110	241	23699G	2,304.00	2,010
MOABU	ACTUALS 6145	241	23699G	624.49	2,010
MOABU	ACTUALS 6147	241	23699G	1,881.32	2,010
MOABU	ACTUALS 6181	241	23699G	698.00	2,010
MOABU	ACTUALS 6198	241	23699G	1,010.00	2,010
MOABU	ACTUALS 6145	241	23708G	2,578.71	2,010
MOABU	ACTUALS 6147	241	23708G	9,244.65	2,010
MOABU	ACTUALS 6145	101	2380	848.82	2,010
MOABU	ACTUALS 6147	101	2380	3,196.10	2,010
MOABU	ACTUALS 6668	101	2380	7,749.84	2,010
MOABU	ACTUALS 6145	231	238610G	4,665.05	2,010
MOABU	ACTUALS 6147	231	238610G	18,139.38	2,010
MOABU	ACTUALS 6145	231	23869G	5,059.36	2,010
MOABU	ACTUALS 6147	231	23869G	18,671.39	2,010
MOABU	ACTUALS 6145	101	2410	1,206.75	2,010
MOABU	ACTUALS 6147	101	2410	4,532.68	2,010
MOABU	ACTUALS 6145	101	2430	2,577.41	2,010
MOABU	ACTUALS 6147	101	2430	9,714.07	2,010
MOABU	ACTUALS 6145	101	2450	2,444.11	2,010
MOABU	ACTUALS 6147	101	2450	9,295.42	2,010
MOABU	ACTUALS 6145	101	2460	8,179.87	2,010
MOABU	ACTUALS 6147	101	2460	29,184.42	2,010
MOABU	ACTUALS 6145	231	247110G	574.82	2,010
MOABU	ACTUALS 6147	231	247110G	2,234.90	2,010
MOABU	ACTUALS 6145	231	24719G	645.62	2,010

CSP IGC's

MOABU	ACTUALS 6147	231	24719G	2,316.60	2,010
MOABU	ACTUALS 6145	231	248910G	3,475.60	2,010
MOABU	ACTUALS 6147	231	248910G	13,513.91	2,010
MOABU	ACTUALS 6145	231	24899G	3,906.00	2,010
MOABU	ACTUALS 6147	231	24899G	14,419.99	2,010
MOABU	ACTUALS 6022	241	249310G	68.00	2,010
MOABU	ACTUALS 6061	241	249310G	828.00	2,010
MOABU	ACTUALS 6091	241	249310G	1,091.00	2,010
MOABU	ACTUALS 6095	241	249310G	6,914.00	2,010
MOABU	ACTUALS 6103	241	249310G	24,921.00	2,010
MOABU	ACTUALS 6104	241	249310G	2,386.00	2,010
MOABU	ACTUALS 6105	241	249310G	2,989.00	2,010
MOABU	ACTUALS 6109	241	249310G	179.00	2,010
MOABU	ACTUALS 6110	241	249310G	8,026.00	2,010
MOABU	ACTUALS 6145	241	249310G	3,556.11	2,010
MOABU	ACTUALS 6147	241	249310G	13,827.63	2,010
MOABU	ACTUALS 6181	241	249310G	5,020.00	2,010
MOABU	ACTUALS 6198	241	249310G	7,260.00	2,010
MOABU	ACTUALS 6145	241	24939G	3,214.09	2,010
MOABU	ACTUALS 6147	241	24939G	11,894.83	2,010
MOABU	ACTUALS 6145	101	2510	61.24	2,010
MOABU	ACTUALS 6147	101	2510	159.53	2,010
MOABU	ACTUALS 6145	101	2520	1,859.14	2,010
MOABU	ACTUALS 6147	101	2520	7,044.89	2,010
MOABU	ACTUALS 6022	241	253910G	10.00	2,010
MOABU	ACTUALS 6061	241	253910G	331.00	2,010
MOABU	ACTUALS 6091	241	253910G	164.00	2,010
MOABU	ACTUALS 6095	241	253910G	1,039.00	2,010
MOABU	ACTUALS 6103	241	253910G	3,746.00	2,010
MOABU	ACTUALS 6104	241	253910G	954.00	2,010
MOABU	ACTUALS 6105	241	253910G	449.00	2,010
MOABU	ACTUALS 6109	241	253910G	27.00	2,010
MOABU	ACTUALS 6110	241	253910G	1,206.00	2,010
MOABU	ACTUALS 6145	241	253910G	3,953.24	2,010
MOABU	ACTUALS 6147	241	253910G	15,039.25	2,010
MOABU	ACTUALS 6181	241	253910G	2,008.00	2,010
MOABU	ACTUALS 6198	241	253910G	2,904.00	2,010
MOABU	ACTUALS 6022	241	25398G	10.00	2,010
MOABU	ACTUALS 6061	241	25398G	72.00	2,010
MOABU	ACTUALS 6091	241	25398G	381.00	2,010
MOABU	ACTUALS 6095	241	25398G	679.00	2,010
MOABU	ACTUALS 6103	241	25398G	2,931.00	2,010
MOABU	ACTUALS 6104	241	25398G	1,246.00	2,010
MOABU	ACTUALS 6105	241	25398G	445.00	2,010
MOABU	ACTUALS 6109	241	25398G	27.00	2,010
MOABU	ACTUALS 6110	241	25398G	1,101.00	2,010
MOABU	ACTUALS 6145	241	25398G	-108.11	2,010
MOABU	ACTUALS 6147	241	25398G	-250.56	2,010
MOABU	ACTUALS 6181	241	25398G	2,775.00	2,010
MOABU	ACTUALS 6198	241	25398G	4,041.00	2,010
MOABU	ACTUALS 6145	101	2540	5,445.10	2,010
MOABU	ACTUALS 6147	101	2540	20,680.91	2,010
MOABU	ACTUALS 6022	231	25448G	35.00	2,010
MOABU	ACTUALS 6061	231	25448G	51.00	2,010
MOABU	ACTUALS 6091	231	25448G	561.00	2,010

CSP IGC's

MOABU	ACTUALS	6095	231	25448G	3,561.00	2,010
MOABU	ACTUALS	6103	231	25448G	12,838.00	2,010
MOABU	ACTUALS	6104	231	25448G	149.00	2,010
MOABU	ACTUALS	6105	231	25448G	1,539.00	2,010
MOABU	ACTUALS	6109	231	25448G	92.00	2,010
MOABU	ACTUALS	6110	231	25448G	4,134.00	2,010
MOABU	ACTUALS	6145	231	25448G	409.50	2,010
MOABU	ACTUALS	6147	231	25448G	1,526.66	2,010
MOABU	ACTUALS	6181	231	25448G	313.00	2,010
MOABU	ACTUALS	6198	231	25448G	453.00	2,010
MOABU	ACTUALS	6145	241	25454G	716.44	2,010
MOABU	ACTUALS	6147	241	25454G	2,684.31	2,010
MOABU	ACTUALS	6022	241	25508G	2.00	2,010
MOABU	ACTUALS	6091	241	25508G	33.00	2,010
MOABU	ACTUALS	6095	241	25508G	212.00	2,010
MOABU	ACTUALS	6103	241	25508G	766.00	2,010
MOABU	ACTUALS	6105	241	25508G	91.00	2,010
MOABU	ACTUALS	6109	241	25508G	5.00	2,010
MOABU	ACTUALS	6110	241	25508G	246.00	2,010
MOABU	ACTUALS	6145	241	25508G	429.77	2,010
MOABU	ACTUALS	6147	241	25508G	1,648.69	2,010
MOABU	ACTUALS	6145	101	2560	7,119.90	2,010
MOABU	ACTUALS	6147	101	2560	26,989.16	2,010
MOABU	ACTUALS	6145	101	2580	163.23	2,010
MOABU	ACTUALS	6147	101	2580	614.89	2,010
MOABU	ACTUALS	6145	101	2610	2,778.77	2,010
MOABU	ACTUALS	6147	101	2610	10,491.38	2,010
MOABU	ACTUALS	6145	231	261310G	134.64	2,010
MOABU	ACTUALS	6147	231	261310G	523.45	2,010
MOABU	ACTUALS	6022	231	26139G	4.00	2,010
MOABU	ACTUALS	6061	231	26139G	34.00	2,010
MOABU	ACTUALS	6091	231	26139G	67.00	2,010
MOABU	ACTUALS	6095	231	26139G	427.00	2,010
MOABU	ACTUALS	6103	231	26139G	1,541.00	2,010
MOABU	ACTUALS	6104	231	26139G	99.00	2,010
MOABU	ACTUALS	6105	231	26139G	184.00	2,010
MOABU	ACTUALS	6109	231	26139G	11.00	2,010
MOABU	ACTUALS	6110	231	26139G	496.00	2,010
MOABU	ACTUALS	6145	231	26139G	356.17	2,010
MOABU	ACTUALS	6147	231	26139G	1,342.33	2,010
MOABU	ACTUALS	6181	231	26139G	209.00	2,010
MOABU	ACTUALS	6198	231	26139G	302.00	2,010
MOABU	ACTUALS	6145	101	2620	1,139.61	2,010
MOABU	ACTUALS	6147	101	2620	4,254.09	2,010
MOABU	ACTUALS	6022	231	265810G	46.00	2,010
MOABU	ACTUALS	6061	231	265810G	414.00	2,010
MOABU	ACTUALS	6091	231	265810G	739.00	2,010
MOABU	ACTUALS	6095	231	265810G	4,683.00	2,010
MOABU	ACTUALS	6103	231	265810G	0.00	2,010
MOABU	ACTUALS	6104	231	265810G	1,193.00	2,010
MOABU	ACTUALS	6105	231	265810G	1,446.46	2,010
MOABU	ACTUALS	6109	231	265810G	121.00	2,010
MOABU	ACTUALS	6110	231	265810G	0.00	2,010
MOABU	ACTUALS	6145	231	265810G	2,538.11	2,010
MOABU	ACTUALS	6147	231	265810G	9,868.48	2,010

CSP IGC's

MOABU	ACTUALS 6181	231	265810G	2,510.00	2,010
MOABU	ACTUALS 6198	231	265810G	3,630.00	2,010
MOABU	ACTUALS 6145	231	26589G	2,811.69	2,010
MOABU	ACTUALS 6147	231	26589G	9,688.49	2,010
MOABU	ACTUALS 6145	101	2710	931.55	2,010
MOABU	ACTUALS 6147	101	2710	3,531.12	2,010
MOABU	ACTUALS 6022	231	272010G	13.00	2,010
MOABU	ACTUALS 6091	231	272010G	211.00	2,010
MOABU	ACTUALS 6095	231	272010G	1,338.00	2,010
MOABU	ACTUALS 6103	231	272010G	4,823.00	2,010
MOABU	ACTUALS 6105	231	272010G	578.00	2,010
MOABU	ACTUALS 6109	231	272010G	34.00	2,010
MOABU	ACTUALS 6110	231	272010G	1,553.00	2,010
MOABU	ACTUALS 6145	101	2730	1,250.41	2,010
MOABU	ACTUALS 6147	101	2730	4,536.83	2,010

2010 Expend - GAAP - ICP Units
Unallowable Costs

Unit	Ledger	Acct	Fund	DeptID	Sum Total Amt	Year
MOABU	ACTUALS	3815	101	2110	423.00	2,010
MOABU	ACTUALS	5401	101	2110	850.00	2,010
MOABU	ACTUALS	5603	101	2120	1,030.00	2,010
MOABU	ACTUALS	4101	101	2150	15,446.15	2,010
MOABU	ACTUALS	4102	101	2150	19,043.53	2,010
MOABU	ACTUALS	4103	101	2150	91.04	2,010
MOABU	ACTUALS	3815	101	2210	20,000.00	2,010
MOABU	ACTUALS	5401	101	2210	400.00	2,010
MOABU	ACTUALS	5401	101	2220	850.00	2,010
MOABU	ACTUALS	5604	101	2220	1,514.37	2,010
MOABU	ACTUALS	5401	101	2240	1,000.00	2,010
MOABU	ACTUALS	5411	101	2240	5,100.45	2,010
MOABU	ACTUALS	3901	101	2250	270,000.00	2,010
MOABU	ACTUALS	3815	101	2270	225,340.00	2,010
MOABU	ACTUALS	3901	101	2320	4,959.00	2,010
MOABU	ACTUALS	5401	101	2320	4,188.00	2,010
MOABU	ACTUALS	5603	101	2320	1,000.00	2,010
MOABU	ACTUALS	5605	101	2320	974.77	2,010
MOABU	ACTUALS	5604	231	23219G	732.20	2,010
MOABU	ACTUALS	5605	231	23219G	700.53	2,010
MOABU	ACTUALS	3815	101	2330	786,572.00	2,010
MOABU	ACTUALS	5603	231	23339G	4,660.00	2,010
MOABU	ACTUALS	5411	241	23360GA	1,516.28	2,010
MOABU	ACTUALS	5604	241	23360GA	789.00	2,010
MOABU	ACTUALS	5401	231	23479G	4,153.95	2,010
MOABU	ACTUALS	5411	231	23479G	6,298.00	2,010
MOABU	ACTUALS	5603	231	23479G	749.99	2,010
MOABU	ACTUALS	5604	231	23479G	8,785.67	2,010
MOABU	ACTUALS	3815	231	234910G	654,449.00	2,010
MOABU	ACTUALS	3815	231	23499G	541,566.00	2,010
MOABU	ACTUALS	5411	101	2360	448.34	2,010
MOABU	ACTUALS	5411	241	23638G	1,675.69	2,010
MOABU	ACTUALS	3815	231	236810G	638.00	2,010
MOABU	ACTUALS	5411	231	236810G	387.50	2,010
MOABU	ACTUALS	5411	231	23689G	12,894.36	2,010
MOABU	ACTUALS	5604	231	23689G	784.04	2,010
MOABU	ACTUALS	3815	241	236910G	1,951.00	2,010
MOABU	ACTUALS	5411	241	23708G	927.29	2,010
MOABU	ACTUALS	5604	241	23708G	762.30	2,010
MOABU	ACTUALS	3815	101	2410	5,000.00	2,010
MOABU	ACTUALS	5603	101	2410	629.00	2,010
MOABU	ACTUALS	5411	101	2450	5,633.60	2,010
MOABU	ACTUALS	5603	101	2450	1,357.80	2,010
MOABU	ACTUALS	5604	101	2450	1,979.91	2,010
MOABU	ACTUALS	3901	101	2460	4,275.00	2,010
MOABU	ACTUALS	5603	101	2460	2,982.78	2,010
MOABU	ACTUALS	5604	101	2460	1,708.00	2,010
MOABU	ACTUALS	5603	241	24939G	4,794.00	2,010
MOABU	ACTUALS	5401	101	2510	4,828.00	2,010
MOABU	ACTUALS	5604	101	2510	712.00	2,010
MOABU	ACTUALS	3901	101	2540	323,000.00	2,010
MOABU	ACTUALS	5603	241	25454G	1,797.59	2,010
MOABU	ACTUALS	3111	101	2560	150.00	2,010

2010 Expend - GAAP - ICP Units
Unallowable Costs

MOABU	ACTUALS 5411	101	2560	2,210.60	2,010
MOABU	ACTUALS 5604	101	2560	690.20	2,010
MOABU	ACTUALS 5605	101	2610	565.00	2,010
MOABU	ACTUALS 3901	101	2620	2,721.00	2,010
MOABU	ACTUALS 5401	101	2620	3,000.00	2,010
MOABU	ACTUALS 5411	101	2620	5,509.45	2,010
MOABU	ACTUALS 5604	101	2620	509.00	2,010
MOABU	ACTUALS 3815	231	26589G	3,000.00	2,010
MOABU	ACTUALS 5401	231	26589G	30,559.09	2,010
MOABU	ACTUALS 5411	231	26589G	6,585.60	2,010
MOABU	ACTUALS 5603	231	26589G	37,843.34	2,010
MOABU	ACTUALS 4101	101	2710	76,784.62	2,010
MOABU	ACTUALS 4102	101	2710	98,626.20	2,010
MOABU	ACTUALS 4103	101	2710	44.10	2,010
MOABU	ACTUALS 5603	101	2710	3,626.73	2,010
MOABU	ACTUALS 3815	101	2720	349,577.00	2,010
MOABU	ACTUALS 3815	231	272010G	146,825.95	2,010
MOABU	ACTUALS 3815	241	272210G	28,686.00	2,010
MOABU	ACTUALS 3111	101	2730	-12.50	2,010

**INTRAGOVERNMENTAL CHARGE-OUT
METHODOLOGIES**

INTRAGOVERNMENTAL CHARGES METHODOLOGIES

DEPARTMENT NAME: 2000 Health & Human Services

CONTACT: Bill Stokesbary

DIVISION NAME: 2100 Administration

TELEPHONE: 343-6735

BUDGET UNIT (DEPTID NUMBER AND NAME): 2110 Administration

APPROVED BY:

(Signature of Department Director)

SERVICES PROVIDED:

The Director's Office supervises the operation of the department, providing policy leadership and direction and serving as primary liaison with the Administration, legislative bodies, and other public agencies and groups.

BUDGET PREPARATION METHODOLOGY:

Budgeted amounts are based on the ratio of authorized employees within the DHHS division administrative and support budget units. These are: Medical (2120), Planning (2130), Support Services (2210), Social Services (2320), Community Health (2410) and Environmental Services (2510). The number of authorized employees within these budget units is based on the most current information adjusted for anticipated personnel increases/decreases. Only general government positions are included. This data (# of positions) is entered into the allocation table as raw data. The system converts this to a percentage and bills each of the referenced budget units their proportionate share of this unit's expenses.

CHARGE-OUT METHODOLOGY:

☒ Allocating

☐ Non-allocating

☐ Combination

The raw data developed during budget preparation is entered in the cost allocation tables of the financial information systems. Each month, the system automatically applies this data to the total expenditures for this unit and allocates the costs to the various units within the department.

REVISION DATE:

22 May 02

OMB DIRECTOR SIGNATURE:

Cheryl Frasca

INTRAGOVERNMENTAL CHARGES METHODOLOGIES

DEPARTMENT NAME: 2000 Health & Human Services

CONTACT: Bill Stokesbary

DIVISION NAME: 2200 Management Support Services

TELEPHONE: 343-6735

BUDGET UNIT (DEPTID NUMBER AND NAME): 2210 Support Services Administration

APPROVED BY:

(Signature of Department Director)

SERVICES PROVIDED:

The Support Services Administration unit provides management direction and policy guidance supporting the execution of all division activities, including supervising all centralized internal administrative support functions and serving as the department's principal ongoing administrative liaison with other Municipal departments and outside agencies.

BUDGET PREPARATION METHODOLOGY:

Budgeted amounts are based on the number of authorized employees within each section of Support Services Administration. These are: Fiscal Support (2220), Information Systems (2230) and Grants and Contracts (2240). The number of authorized employees within these sections is based on the most current information adjusted for anticipated personnel increases/decreases. Only general government positions are considered. This raw data is entered into the allocation table and charged to each appropriate administrative/support budget unit.

CHARGE-OUT METHODOLOGY:

☒ Allocating

☐ Non-allocating

☐ Combination

The raw data developed during budget preparation are entered in the costs allocation tables of the financial information system. Each month, the system automatically applies this data to the total expenditures for this unit and allocates the costs to the various sections.

REVISION DATE: 22 May 02

OMB DIRECTOR SIGNATURE:

Cheryl Frasca

INTRAGOVERNMENTAL CHARGES METHODOLOGIES

DEPARTMENT NAME: 2000 Health & Human Services

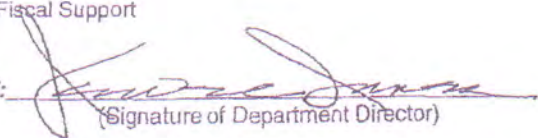
CONTACT: Bill Stokesbary

DIVISION NAME: 2200 Management Support Services

TELEPHONE: 343-6735

BUDGET UNIT (DEPTID NUMBER AND NAME): 2220 Fiscal Support

APPROVED BY:


(Signature of Department Director)

SERVICES PROVIDED:

The Fiscal Support unit provides centralized in-house accounting, document processing, budgeting, and other fiscal management support services to all grant and operating funded administrative and program functions within the department.

BUDGET PREPARATION METHODOLOGY:

Budgeted amounts are based on the level of support, which has been historically provided to the respective budget units. The most reliable measure is the number of documents processed. It is assumed that the number of database records for each budget unit within the fiscal support accounting system is a reasonable estimate of the documents handled since each record usually reflects one document processed. In cases where operating and grant budget units perform the same or similar functions, the grant document data may be consolidated with the operating budget unit document data. Appropriate in-house IGCs will be charged to the grants based on the estimated amount of administrative support provided for Grant Accounting/Administration.

CHARGE-OUT METHODOLOGY:

☐ Allocating

☐ Non-allocating

☒ Combination

The percentages developed during preparation are entered in the cost allocation tables of the financial information system. Each month, the system automatically applies the percentages to the total expenditures for this unit and allocates the costs to the various sections within the department. Amounts necessary in budget preparation will be charged to the grants via a journal entry.

REVISION DATE: 22 May 02

OMB DIRECTOR SIGNATURE:

Cheryl Frasca

INTRAGOVERNMENTAL CHARGES METHODOLOGIES

DEPARTMENT NAME: 2000 Health & Human Services

CONTACT: Bill Stokesbary

DIVISION NAME: 2200 Management Support Services

TELEPHONE: 343-6735

BUDGET UNIT (DEPTID NUMBER AND NAME): 2230 Information Systems Support

APPROVED BY:


(Signature of Department Director)

SERVICES PROVIDED:

The Information Systems Support unit provides centralized administrative support services, including information (i.e., computer) systems maintenance and development, word processing, building maintenance, vehicle management, and in-house courier and copier services.

BUDGET PREPARATION METHODOLOGY:

Budgeted amounts are based on the number of computer PCs and printers assigned to a budget unit, to include both operating and grants activities. The number of computer hardware items assigned is an indicator of the level of hardware, software, and training support required. In cases where operating and grant budget units perform the same or similar functions, the grant computer hardware data may be consolidated with the operating budget unit computer hardware data. The number of computer hardware items within these sections is based on the most current information adjusted for anticipated hardware increases or decreases. This data (# of computer hardware items) is entered into the allocation table as raw data. The system converts this to a percentage and bills each of the referenced budget units their proportionate share of this unit's expenses.

CHARGE-OUT METHODOLOGY:

☒ Allocating

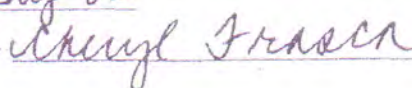
☐ Non-allocating

☐ Combination

The raw data developed during budget preparation is entered into the cost allocation tables of the financial information system. Each month, the system automatically applies this data to the total expenditures for this unit and allocates the costs.

REVISION DATE: 22 May 02

OMB DIRECTOR SIGNATURE:



INTRAGOVERNMENTAL CHARGES METHODOLOGIES

DEPARTMENT NAME: 2000 Health & Human Services

CONTACT: Bill Stokesbary

DIVISION NAME: 2200 Management Support Services

TELEPHONE: 6735

BUDGET UNIT (DEPTID NUMBER AND NAME): 2240 Grants & Contracts

APPROVED BY: 

(Signature of Department Director)

SERVICES PROVIDED:

To insure that various Health & Human Services needed by the Anchorage community are provided through well-chosen and well-administered profit and non-profit agencies. These contracts are administered primarily through the Human Services Matching Grant program.

BUDGET PREPARATION METHODOLOGY:

Appropriate in-house IGCs will be charged to the appropriate grant based on administrative support provided to the grant.

CHARGE-OUT METHODOLOGY:

☐ Allocating

☒ Non-allocating

☐ Combination

Any amounts necessary in budget preparation will be charged to the grant via a journal entry.

REVISION DATE: 22 May 02

OMB DIRECTOR SIGNATURE: Cheryl Frasca

INTRAGOVERNMENTAL CHARGES METHODOLOGIES

DEPARTMENT NAME: 2000 Health & Human Services

CONTACT: Bill Stokesbary

DIVISION NAME: 2200 Management Support Services

TELEPHONE: 343-6735

BUDGET UNIT (DEPTID NUMBER AND NAME): 2290 Miscellaneous Grant Contribution

APPROVED BY:


(Signature of Department Director)

SERVICES PROVIDED:

Provide the funding necessary to meet the match requirements of the Air Quality Grant.

BUDGET PREPARATION METHODOLOGY:

The amount budgeted is based on prior year's funding of the Municipal contribution to the air quality grant. Other consideration may include additional mandates from the Clear Air Act, requirements of the air quality grant funding, or information from other clean air agencies such as the EPA. The budgeted amount is 100% charged to the vehicle emissions Inspection and Maintenance (I/M) program, 2540-254000.

CHARGE-OUT METHODOLOGY:

☒ Allocating

☐ Non-allocating

☐ Combination

The data developed during budget preparation is entered in the cost allocation tables of the financial information systems. The system automatically allocates all expenditures to project 254000.

REVISION DATE: 22 May 02

OMB DIRECTOR SIGNATURE: Cheryl Frasca

INTRAGOVERNMENTAL CHARGES METHODOLOGIES

DEPARTMENT NAME: 2000 Health & Human Services

CONTACT: Bill Stokesbary

DIVISION NAME: 2300 Social Services

TELEPHONE: 343-6735

BUDGET UNIT (DEPTID NUMBER AND NAME): 2320 Administration

APPROVED BY:

(Signature of Department Director)

SERVICES PROVIDED:

The Social Services Administration unit provides management direction and policy guidance supporting the execution of all division activities, including supervising the delivery of both in-house and contracted services, and providing advisory assistance to the Director, Administration, and Assembly on social service issues.

BUDGET PREPARATION METHODOLOGY:

Budgeted amounts are based on the ratio of authorized positions assigned to each budget unit within the Social Services Division. The number of authorized positions within these sections is based on the most current information adjusted for anticipated personnel increases/decreases. This data (# of positions) is entered into the allocation table as raw data. The system converts this to a percentage and bills each of the referenced budget units their proportionate share of this unit's expenses. Appropriate in-house IGCs will be charged to grants based on the amount of administrative/management support provided to the grant program.

CHARGE-OUT METHODOLOGY:

☐ Allocating

☐ Non-allocating

☒ Combination

The percentages developed during budget preparation are entered in the cost allocation tables of the financial information system. Each month, the system automatically applies the percentages to the total expenditures for this unit and allocates the costs. Any amounts necessary in budget preparation will be charged to the grants via a journal entry.

REVISION DATE: 22 May 02

OMB DIRECTOR SIGNATURE: Cheryl Frasca

INTRAGOVERNMENTAL CHARGES METHODOLOGIES

DEPARTMENT NAME: 2000 Health & Human Services

CONTACT: Bill Stokesbary

DIVISION NAME: 2400 Community Health Services

TELEPHONE: 343-6735

BUDGET UNIT (DEPTID NUMBER AND NAME): 2410 Administration

APPROVED BY:

(Signature of Department Director)

SERVICES PROVIDED:

The Community Health Services Administration unit provides management direction and policy guidance supporting the execution of all division activities, including supervising the delivery of community health services and the collection of program fees, and providing advisory assistance to the Director, Administration, and Assembly on community health issues.

BUDGET PREPARATION METHODOLOGY:

Budgeted amounts are based on the ratio of authorized positions assigned to each budget unit within the Community Health Services Division. Both general government and grant-funded positions will be included. In cases where operating and grant budget units perform the same or similar functions, the grant authorized position data may be consolidated with the operating budget unit position data. The number of authorized positions within these sections is based on the most current information adjusted for anticipated personnel increases/decreases. This data (# of positions) is entered into the allocation table as raw data. The system converts this to a percentage and bills each of the referenced budget units their proportionate share of this unit's expenses. Appropriate in-house IGCs will be charged to the grants based on the estimated amount of grant management and administrative support.

CHARGE-OUT METHODOLOGY:

☐ Allocating

☐ Non-allocating

☒ Combination

The percentages developed during budget preparation are entered in the cost allocation tables of the financial information system. Each month, the system automatically applies the percentages to the total expenditures for this unit and allocates the costs to the operating orgs (DEPT ID) within the Community Health Division. Any amounts necessary in budget preparation will be charged to the grants via a journal entry.

REVISION DATE: 22 May 02

OMB DIRECTOR SIGNATURE:

Cheryl Frasca

INTRAGOVERNMENTAL CHARGES METHODOLOGIES

DEPARTMENT NAME: 2000 Health & Human Services

CONTACT: Bill Stokesbary

DIVISION NAME: 2400 Community Health Services

TELEPHONE: 343-6735

BUDGET UNIT (DEPTID NUMBER AND NAME): 2430 Clinic Support Services

APPROVED BY:

(Signature of Department Director)

SERVICES PROVIDED:

The Clinic Support Services program provides clerical and administrative support for all Community Health Division programs. Duties include, but are not limited to: client registration, data entry, monitoring and maintenance of clinic and office supplies, monitoring and maintaining division computer databases for program/division reports, correspondence, management of client medical records, and telephone answering/triaging.

BUDGET PREPARATION METHODOLOGY:

Appropriate in-house IGCs will be charged to the grants based on an estimated amount of administrative support provided to the grants in the Community Health Services program.

CHARGE-OUT METHODOLOGY:

☐ Allocating

☒ Non-allocating

☐ Combination

Any amounts necessary in budget preparation will be charged to the grant via a journal entry.

REVISION DATE: 22 May 02

OMB DIRECTOR SIGNATURE:

Cheryl Grasca

INTRAGOVERNMENTAL CHARGES METHODOLOGIES

DEPARTMENT NAME: 2000 Health & Human Services

CONTACT: Bill Stokesbary

DIVISION NAME: 2400 Community Health Services

TELEPHONE: 343-6735

BUDGET UNIT (DEPTID NUMBER AND NAME): 2440 Maternal Child Health

APPROVED BY:

(Signature of Department Director)

SERVICES PROVIDED:

The Maternal Child Health program provides visits in the home for the purpose of health assessment and intervention to identified high risk groups. The Healthy Baby Program provides outreach and case management services to Medicaid enrolled pregnant women/teenagers under the age of 21. The child care health consultation project provides educational presentations and consultations at centers.

BUDGET PREPARATION METHODOLOGY:

Charges from this unit are to grant programs administered by this division. The appropriate level of indirect costs is determined annually through the Division's Indirect Cost Rate. That rate is converted to estimated dollars for the next calendar year's grants and utilized to determine the budgeted charges to grants for the next budget year.

CHARGE-OUT METHODOLOGY:

☐ Allocating

☒ Non-allocating

☐ Combination

Any amounts necessary in budget preparation will be charged to the grant via a journal entry.

REVISION DATE: 22 May 02

OMB DIRECTOR SIGNATURE: Cheryl Frazer

INTRAGOVERNMENTAL CHARGES METHODOLOGIES

DEPARTMENT NAME: 2000 Health & Human Services

CONTACT: Bill Stokesbary

DIVISION NAME: 2400 Community Health Services

TELEPHONE: 343-6735

BUDGET UNIT (DEPTID NUMBER AND NAME): 2450 Chronic & Infectious Diseases

APPROVED BY:

(Signature of Department Director)

SERVICES PROVIDED:

Provide investigation and follow-up of communicable disease outbreaks, clinic services for immunizations, communicable disease screening, tuberculosis control and international travel, home visits to chronically ill clients and education on disease prevention.

BUDGET PREPARATION METHODOLOGY:

Charges from this unit are to grant programs administered by this division. The appropriate level of indirect costs is determined annually through the Division's Indirect Cost Rate. That rate is converted to estimated dollars for the next calendar year's grants and utilized to determine the budgeted charges to grants for the next budget year.

CHARGE-OUT METHODOLOGY:

☐ Allocating

☒ Non-allocating

☐ Combination

Any amounts necessary in budget preparation will be charged to the grant via a journal entry.

REVISION DATE:

22 May 02

OMB DIRECTOR SIGNATURE:

Cheryl Frasca

INTRAGOVERNMENTAL CHARGES METHODOLOGIES

DEPARTMENT NAME: 2000 Health & Human Services

CONTACT: Bill Stokesbary

DIVISION NAME: 2400 Community Health Services

TELEPHONE: 343-6735

BUDGET UNIT (DEPTID NUMBER AND NAME): 2460 Reproductive Health

APPROVED BY:

(Signature of Department Director)

SERVICES PROVIDED:

The Reproductive Health Clinic (RHC) provides clinical services including screening, diagnosis, treatment, counseling, partner notification, and follow-up for sexually transmitted infections, contraceptive methods, and evaluation and management of cervical dysplasia. Outreach and community activities include health promotion and disease prevention education. The RHC functions as a training site for health care professionals to expand reproductive health management skills.

BUDGET PREPARATION METHODOLOGY:

Charges from this unit are to grant programs administered by this division. The appropriate level of indirect costs is determined annually through the Division's Indirect Cost Rate. That rate is converted to estimated dollars for the next calendar year's grants and utilized to determine the budgeted charges to grants for the next budget year.

CHARGE-OUT METHODOLOGY:

☐ Allocating

☒ Non-allocating

☐ Combination

Any amounts necessary in budget preparation will be charged to the grant via a journal entry.

REVISION DATE:

22 May 02

OMB DIRECTOR SIGNATURE:

Cheryl Frasca

INTRAGOVERNMENTAL CHARGES METHODOLOGIES

DEPARTMENT NAME: 2000 Health & Human Services

CONTACT: Bill Stokesbary

DIVISION NAME: 2400 Community Health Services

TELEPHONE: 343-6735

BUDGET UNIT (DEPTID NUMBER AND NAME): 2480 Women, Infants and Children (WIC)

APPROVED BY:

(Signature of Department Director)

SERVICES PROVIDED:

Provides screening for financial and nutritional risk eligibility according to federal WIC guidelines. Issue vouchers for WIC approved foods. Provides counseling referral, nutritional education, and vendor monitoring. Provides supervisory support to WIC grant.

BUDGET PREPARATION METHODOLOGY:

Charges from this unit are to grant programs administered by this division. The appropriate level of indirect costs is determined annually through the Division's Indirect Cost Rate. That rate is converted to estimated dollars for the next calendar year's grants and utilized to determine the budgeted charges to grants for the next budget year.

CHARGE-OUT METHODOLOGY:

☐ Allocating

☒ Non-allocating

☐ Combination

Any amounts necessary in budget preparation will be charged to the grant via a journal entry.

REVISION DATE:

22 May 02

OMB DIRECTOR SIGNATURE:

Cheryl Frasca

INTRAGOVERNMENTAL CHARGES METHODOLOGIES

DEPARTMENT NAME: 2000 Health & Human Services

CONTACT: Bill Stokesbary

DIVISION NAME: 2500 Environmental Services

TELEPHONE: 343-6735

BUDGET UNIT (DEPTID NUMBER AND NAME): 2510 Administration

APPROVED BY:

(Signature of Department Director)

SERVICES PROVIDED:

The Environmental Services Administration unit provides management direction, policy guidance, and direct administrative assistance supporting the execution of all division activities, including supervising the department's environmental health permit/inspection functions and ongoing monitoring and evaluation programs, and providing advisory assistance to the Director, Administration, and Assembly on environmental health issues.

BUDGET PREPARATION METHODOLOGY:

Budgeted amounts are based on the ratio of positions authorized in each section within the Environmental Services Division. The number of authorized positions within these sections is based on the most current information adjusted for anticipated personnel increases/decreases. The resulting data is entered into the allocation table as raw data and is charged to each general government budget. An amount will be applied to the appropriate grant based on the administrative/management support provided to the Air Quality grant program.

CHARGE-OUT METHODOLOGY:

☐ Allocating

☐ Non-allocating

☒ Combination

The percentages developed during budget preparation are entered in the cost allocation tables of the financial information system. Each month, the system automatically applies the percentages to the total expenditures for this unit and allocates the costs.

If flat rate amounts were necessary in budget preparation, the amounts are charged to the grants via a journal entry.

REVISION DATE:

22 May 02

OMB DIRECTOR SIGNATURE:

Cheryl Jackson

INTRAGOVERNMENTAL CHARGES METHODOLOGIES

DEPARTMENT NAME: 2000 Health & Human Services

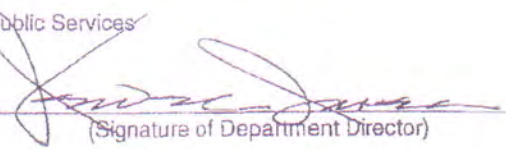
CONTACT: Bill Stokesbary

DIVISION NAME: 2500 Environmental Services

TELEPHONE: 343-6735

BUDGET UNIT (DEPTID NUMBER AND NAME): 2520 Public Services

APPROVED BY:


(Signature of Department Director)

SERVICES PROVIDED:

The Public Services Section provides over the counter and telephone customer services and cashiering activities for the Environmental Services programs.

BUDGET PREPARATION METHODOLOGY:

Budgeted amounts are based on the estimated percentage of time the Public Services Section devotes to providing customer services for each Environmental Services program. This percentage is estimated annually based on prior year's experience.

CHARGE-OUT METHODOLOGY:

☒ Allocating

☐ Non-allocating

☐ Combination

The percentages developed during budget preparation are entered in the cost allocation tables of the financial information system. Each month the system automatically applies the percentages to the total expenditures for this unit and allocates the costs to the various sections with the Environmental Services Division.

REVISION DATE:

22 May 02

OMB DIRECTOR SIGNATURE:

Cheryl Frasca

INTRAGOVERNMENTAL CHARGES METHODOLOGIES

DEPARTMENT NAME: 2000 Health & Human Services

CONTACT: Bill Stokesbary

DIVISION NAME: 2500 Environmental Services

TELEPHONE: 343-6735

BUDGET UNIT (DEPTID NUMBER AND NAME): 2560 Environmental Sanitation

APPROVED BY:

(Signature of Department Director)

SERVICES PROVIDED:

Protect the public from foodborne illnesses and health hazards by enforcing local ordinances. Issue food, facility, and pesticide and noise permits. Inspect public facilities (i.e. restaurants, groceries, and pools) on a scheduled and complaint-responsive basis. Resolve nuisance, noise, and housing complaints.

BUDGET PREPARATION METHODOLOGY:

Budgeted amounts are based on the Environmental Sanitation inspection renewal permits for six Municipal swimming pools operated by Parks & Recreation.

CHARGE-OUT METHODOLOGY:

☐ Allocating

☒ Non-allocating

☐ Combination

Charges will be done manually via a journal entry.

REVISION DATE: 22 May 02

OMB DIRECTOR SIGNATURE: Cheryl Frasca

INTRAGOVERNMENTAL CHARGES METHODOLOGIES

DEPARTMENT NAME: 2000 Health & Human Services

CONTACT: Bill Stokesbary

DIVISION NAME: 2500 Environmental Services

TELEPHONE: 343-6735

BUDGET UNIT (DEPTID NUMBER AND NAME): 2570 On-site Sewer and Water

APPROVED BY:

(Signature of Department Director)

SERVICES PROVIDED:

Cancelled.

BUDGET PREPARATION METHODOLOGY:

CHARGE-OUT METHODOLOGY:

☐ Allocating

☐ Non-allocating

☐ Combination

REVISION DATE: 22 May 02

OMB DIRECTOR SIGNATURE:

Cheryl Frisco

INTRAGOVERNMENTAL CHARGES METHODOLOGIES

DEPARTMENT NAME: Office of Planning, Development & Public Works

CONTACT: Robert Moore

DIVISION NAME: Anchorage Memorial Cemetery

TELEPHONE: 343-8180

BUDGET UNIT (DEPTID NUMBER AND NAME): ²⁷¹⁰ ~~7150~~ Anchorage Memorial Cemetery

APPROVED BY:


(Signature of Department Director)

SERVICES PROVIDED:

Provides a shared Municipal owned facility with Community Work Service.

BUDGET PREPARATION METHODOLOGY:

The Anchorage Memorial Cemetery and Community Work Service have agreed to share the operating costs of the facility located at 535 E. 9th Avenue. Facility Maintenance charges the Anchorage Memorial Cemetery for the costs of operating the facility and then the Anchorage Memorial Cemetery in turn charges the Community Work Service for their portion of the costs.

CHARGE-OUT METHODOLOGY:

☐ Allocating

☒ Non-allocating

☐ Combination

The Community Work Service is charged an agreed upon flat rate for their portion of the operating costs of the facility through a journal entry.

REVISION DATE:

22 May 02

OMB DIRECTOR SIGNATURE:

Cheryl Frasca

INTRAGOVERNMENTAL CHARGES METHODOLOGIES

DEPARTMENT NAME: 2000 Health & Human Services

CONTACT: Bill Stokesbary

DIVISION NAME: 2100 Administration

TELEPHONE: 343-6735

BUDGET UNIT (DEPTID NUMBER AND NAME): 2110 Administration

APPROVED BY:

(Signature of Department Director)

SERVICES PROVIDED:

The Director's Office supervises the operation of the department, providing policy leadership and direction and serving as primary liaison with the Administration, legislative bodies, and other public agencies and groups.

BUDGET PREPARATION METHODOLOGY:

Budgeted amounts are based on the ratio of authorized employees within the DHHS division administrative and support budget units. These are: Medical (2120), Planning (2130), Support Services (2210), Social Services (2320), Community Health (2410) and Environmental Services (2510). The number of authorized employees within these budget units is based on the most current information adjusted for anticipated personnel increases/decreases. Only general government positions are included. This data (# of positions) is entered into the allocation table as raw data. The system converts this to a percentage and bills each of the referenced budget units their proportionate share of this unit's expenses.

CHARGE-OUT METHODOLOGY:

☒ Allocating

☐ Non-allocating

☐ Combination

The raw data developed during budget preparation is entered in the cost allocation tables of the financial information systems. Each month, the system automatically applies this data to the total expenditures for this unit and allocates the costs to the various units within the department.

REVISION DATE: 22 May 02

OMB DIRECTOR SIGNATURE: Cheryl Frasca

INTRAGOVERNMENTAL CHARGES METHODOLOGIES

DEPARTMENT NAME: 2000 Health & Human Services

CONTACT: Bill Stokesbary

DIVISION NAME: 2200 Management Support Services

TELEPHONE: 343-6735

BUDGET UNIT (DEPTID NUMBER AND NAME): 2210 Support Services Administration

APPROVED BY:

(Signature of Department Director)

SERVICES PROVIDED:

The Support Services Administration unit provides management direction and policy guidance supporting the execution of all division activities, including supervising all centralized internal administrative support functions and serving as the department's principal ongoing administrative liaison with other Municipal departments and outside agencies.

BUDGET PREPARATION METHODOLOGY:

Budgeted amounts are based on the number of authorized employees within each section of Support Services Administration. These are: Fiscal Support (2220), Information Systems (2230) and Grants and Contracts (2240). The number of authorized employees within these sections is based on the most current information adjusted for anticipated personnel increases/decreases. Only general government positions are considered. This raw data is entered into the allocation table and charged to each appropriate administrative/support budget unit.

CHARGE-OUT METHODOLOGY:

☒ Allocating

☐ Non-allocating

☐ Combination

The raw data developed during budget preparation are entered in the costs allocation tables of the financial information system. Each month, the system automatically applies this data to the total expenditures for this unit and allocates the costs to the various sections.

REVISION DATE: 22 May 02

OMB DIRECTOR SIGNATURE:

Cheryl Frasca

INTRAGOVERNMENTAL CHARGES METHODOLOGIES

DEPARTMENT NAME: 2000 Health & Human Services

CONTACT: Bill Stokesbary

DIVISION NAME: 2200 Management Support Services

TELEPHONE: 343-6735

BUDGET UNIT (DEPTID NUMBER AND NAME): 2220 Fiscal Support

APPROVED BY:


(Signature of Department Director)

SERVICES PROVIDED:

The Fiscal Support unit provides centralized in-house accounting, document processing, budgeting, and other fiscal management support services to all grant and operating funded administrative and program functions within the department.

BUDGET PREPARATION METHODOLOGY:

Budgeted amounts are based on the level of support, which has been historically provided to the respective budget units. The most reliable measure is the number of documents processed. It is assumed that the number of database records for each budget unit within the fiscal support accounting system is a reasonable estimate of the documents handled since each record usually reflects one document processed. In cases where operating and grant budget units perform the same or similar functions, the grant document data may be consolidated with the operating budget unit document data. Appropriate in-house IGCs will be charged to the grants based on the estimated amount of administrative support provided for Grant Accounting/Administration.

CHARGE-OUT METHODOLOGY:

☐ Allocating

☐ Non-allocating

☒ Combination

The percentages developed during preparation are entered in the cost allocation tables of the financial information system. Each month, the system automatically applies the percentages to the total expenditures for this unit and allocates the costs to the various sections within the department. Amounts necessary in budget preparation will be charged to the grants via a journal entry.

REVISION DATE: 22 May 02

OMB DIRECTOR SIGNATURE:

Cheryl Frasca

INTRAGOVERNMENTAL CHARGES METHODOLOGIES

DEPARTMENT NAME: 2000 Health & Human Services

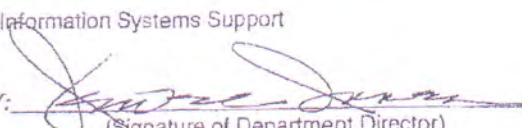
CONTACT: Bill Stokesbary

DIVISION NAME: 2200 Management Support Services

TELEPHONE: 343-6735

BUDGET UNIT (DEPTID NUMBER AND NAME): 2230 Information Systems Support

APPROVED BY:


(Signature of Department Director)

SERVICES PROVIDED:

The Information Systems Support unit provides centralized administrative support services, including information (i.e., computer) systems maintenance and development, word processing, building maintenance, vehicle management, and in-house courier and copier services.

BUDGET PREPARATION METHODOLOGY:

Budgeted amounts are based on the number of computer PCs and printers assigned to a budget unit, to include both operating and grants activities. The number of computer hardware items assigned is an indicator of the level of hardware, software, and training support required. In cases where operating and grant budget units perform the same or similar functions, the grant computer hardware data may be consolidated with the operating budget unit computer hardware data. The number of computer hardware items within these sections is based on the most current information adjusted for anticipated hardware increases or decreases. This data (# of computer hardware items) is entered into the allocation table as raw data. The system converts this to a percentage and bills each of the referenced budget units their proportionate share of this unit's expenses.

CHARGE-OUT METHODOLOGY:

☒ Allocating

☐ Non-allocating

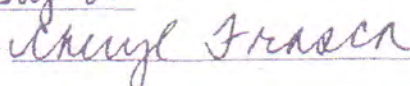
☐ Combination

The raw data developed during budget preparation is entered into the cost allocation tables of the financial information system. Each month, the system automatically applies this data to the total expenditures for this unit and allocates the costs.

REVISION DATE:

22 May 02

OMB DIRECTOR SIGNATURE:



INTRAGOVERNMENTAL CHARGES METHODOLOGIES

DEPARTMENT NAME: 2000 Health & Human Services

CONTACT: Bill Stokesbary

DIVISION NAME: 2200 Management Support Services

TELEPHONE: 6735

BUDGET UNIT (DEPTID NUMBER AND NAME): 2240 Grants & Contracts

APPROVED BY:


(Signature of Department Director)

SERVICES PROVIDED:

To insure that various Health & Human Services needed by the Anchorage community are provided through well-chosen and well-administered profit and non-profit agencies. These contracts are administered primarily through the Human Services Matching Grant program.

BUDGET PREPARATION METHODOLOGY:

Appropriate in-house IGCs will be charged to the appropriate grant based on administrative support provided to the grant.

CHARGE-OUT METHODOLOGY:

☐ Allocating

☒ Non-allocating

☐ Combination

Any amounts necessary in budget preparation will be charged to the grant via a journal entry.

REVISION DATE: 22 May 02

OMB DIRECTOR SIGNATURE: Cheryl Frasca

INTRAGOVERNMENTAL CHARGES METHODOLOGIES

DEPARTMENT NAME: 2000 Health & Human Services

CONTACT: Bill Stokesbary

DIVISION NAME: 2200 Management Support Services

TELEPHONE: 343-6735

BUDGET UNIT (DEPTID NUMBER AND NAME): 2290 Miscellaneous Grant Contribution

APPROVED BY:


(Signature of Department Director)

SERVICES PROVIDED:

Provide the funding necessary to meet the match requirements of the Air Quality Grant.

BUDGET PREPARATION METHODOLOGY:

delete
The amount budgeted is based on prior year's funding of the Municipal contribution to the air quality grant. Other consideration may include additional mandates from the Clear Air Act, requirements of the air quality grant funding, or information from other clean air agencies such as the EPA. The budgeted amount is 100% charged to the vehicle emissions Inspection and Maintenance (I/M) program, 2540-254000.

CHARGE-OUT METHODOLOGY:

☒ Allocating

☐ Non-allocating

☐ Combination

The data developed during budget preparation is entered in the cost allocation tables of the financial information systems. The system automatically allocates all expenditures to project 254000.

REVISION DATE: 22 May 02

OMB DIRECTOR SIGNATURE: Cheryl Frasca

INTRAGOVERNMENTAL CHARGES METHODOLOGIES

DEPARTMENT NAME: 2000 Health & Human Services

CONTACT: Bill Stokesbary

DIVISION NAME: 2300 Social Services

TELEPHONE: 343-6735

BUDGET UNIT (DEPTID NUMBER AND NAME): 2320 Administration

APPROVED BY:

(Signature of Department Director)

SERVICES PROVIDED:

The Social Services Administration unit provides management direction and policy guidance supporting the execution of all division activities, including supervising the delivery of both in-house and contracted services, and providing advisory assistance to the Director, Administration, and Assembly on social service issues.

BUDGET PREPARATION METHODOLOGY:

Budgeted amounts are based on the ratio of authorized positions assigned to each budget unit within the Social Services Division. The number of authorized positions within these sections is based on the most current information adjusted for anticipated personnel increases/decreases. This data (# of positions) is entered into the allocation table as raw data. The system converts this to a percentage and bills each of the referenced budget units their proportionate share of this unit's expenses. Appropriate in-house IGCs will be charged to grants based on the amount of administrative/management support provided to the grant program.

CHARGE-OUT METHODOLOGY:

☐ Allocating

☐ Non-allocating

☒ Combination

The percentages developed during budget preparation are entered in the cost allocation tables of the financial information system. Each month, the system automatically applies the percentages to the total expenditures for this unit and allocates the costs. Any amounts necessary in budget preparation will be charged to the grants via a journal entry.

REVISION DATE: 22 May 02

OMB DIRECTOR SIGNATURE: Cheryl Frazer

INTRAGOVERNMENTAL CHARGES METHODOLOGIES

DEPARTMENT NAME: 2000 Health & Human Services

CONTACT: Bill Stokesbary

DIVISION NAME: 2400 Community Health Services

TELEPHONE: 343-6735

BUDGET UNIT (DEPTID NUMBER AND NAME): 2410 Administration

APPROVED BY:

(Signature of Department Director)

SERVICES PROVIDED:

The Community Health Services Administration unit provides management direction and policy guidance supporting the execution of all division activities, including supervising the delivery of community health services and the collection of program fees, and providing advisory assistance to the Director, Administration, and Assembly on community health issues.

BUDGET PREPARATION METHODOLOGY:

Budgeted amounts are based on the ratio of authorized positions assigned to each budget unit within the Community Health Services Division. Both general government and grant-funded positions will be included. In cases where operating and grant budget units perform the same or similar functions, the grant authorized position data may be consolidated with the operating budget unit position data. The number of authorized positions within these sections is based on the most current information adjusted for anticipated personnel increases/decreases. This data (# of positions) is entered into the allocation table as raw data. The system converts this to a percentage and bills each of the referenced budget units their proportionate share of this unit's expenses. Appropriate in-house IGCs will be charged to the grants based on the estimated amount of grant management and administrative support.

CHARGE-OUT METHODOLOGY:

☐ Allocating

☐ Non-allocating

☒ Combination

The percentages developed during budget preparation are entered in the cost allocation tables of the financial information system. Each month, the system automatically applies the percentages to the total expenditures for this unit and allocates the costs to the operating orgs (DEPT ID) within the Community Health Division. Any amounts necessary in budget preparation will be charged to the grants via a journal entry.

REVISION DATE: 22 May 02

OMB DIRECTOR SIGNATURE: Cheryl Frasca

INTRAGOVERNMENTAL CHARGES METHODOLOGIES

DEPARTMENT NAME: 2000 Health & Human Services

CONTACT: Bill Stokesbary

DIVISION NAME: 2400 Community Health Services

TELEPHONE: 343-6735

BUDGET UNIT (DEPTID NUMBER AND NAME): 2430 Clinic Support Services

APPROVED BY:

(Signature of Department Director)

SERVICES PROVIDED:

The Clinic Support Services program provides clerical and administrative support for all Community Health Division programs. Duties include, but are not limited to: client registration, data entry, monitoring and maintenance of clinic and office supplies, monitoring and maintaining division computer databases for program/division reports, correspondence, management of client medical records, and telephone answering/triaging.

BUDGET PREPARATION METHODOLOGY:

Appropriate in-house IGCs will be charged to the grants based on an estimated amount of administrative support provided to the grants in the Community Health Services program.

CHARGE-OUT METHODOLOGY:

☐ Allocating

☒ Non-allocating

☐ Combination

Any amounts necessary in budget preparation will be charged to the grant via a journal entry.

REVISION DATE:

22 May 02

OMB DIRECTOR SIGNATURE:

Cheryl Grasca

INTRAGOVERNMENTAL CHARGES METHODOLOGIES

DEPARTMENT NAME: 2000 Health & Human Services

CONTACT: Bill Stokesbary

DIVISION NAME: 2400 Community Health Services

TELEPHONE: 343-6735

BUDGET UNIT (DEPTID NUMBER AND NAME): 2440 Maternal Child Health

APPROVED BY:


(Signature of Department Director)

SERVICES PROVIDED:

The Maternal Child Health program provides visits in the home for the purpose of health assessment and intervention to identified high risk groups. The Healthy Baby Program provides outreach and case management services to Medicaid enrolled pregnant women/teenagers under the age of 21. The child care health consultation project provides educational presentations and consultations at centers.

BUDGET PREPARATION METHODOLOGY:

Charges from this unit are to grant programs administered by this division. The appropriate level of indirect costs is determined annually through the Division's Indirect Cost Rate. That rate is converted to estimated dollars for the next calendar year's grants and utilized to determine the budgeted charges to grants for the next budget year.

CHARGE-OUT METHODOLOGY:

☐ Allocating

☒ Non-allocating

☐ Combination

Any amounts necessary in budget preparation will be charged to the grant via a journal entry.

REVISION DATE: 22 May 02

OMB DIRECTOR SIGNATURE: Cheryl Frasca

INTRAGOVERNMENTAL CHARGES METHODOLOGIES

DEPARTMENT NAME: 2000 Health & Human Services

CONTACT: Bill Stokesbary

DIVISION NAME: 2400 Community Health Services

TELEPHONE: 343-6735

BUDGET UNIT (DEPTID NUMBER AND NAME): 2450 Chronic & Infectious Diseases

APPROVED BY:

(Signature of Department Director)

SERVICES PROVIDED:

Provide investigation and follow-up of communicable disease outbreaks, clinic services for immunizations, communicable disease screening, tuberculosis control and international travel, home visits to chronically ill clients and education on disease prevention.

BUDGET PREPARATION METHODOLOGY:

Charges from this unit are to grant programs administered by this division. The appropriate level of indirect costs is determined annually through the Division's Indirect Cost Rate. That rate is converted to estimated dollars for the next calendar year's grants and utilized to determine the budgeted charges to grants for the next budget year.

CHARGE-OUT METHODOLOGY:

☐ Allocating

☒ Non-allocating

☐ Combination

Any amounts necessary in budget preparation will be charged to the grant via a journal entry.

REVISION DATE: 22 May 02

OMB DIRECTOR SIGNATURE:

Cheryl Frasca

INTRAGOVERNMENTAL CHARGES METHODOLOGIES

DEPARTMENT NAME: 2000 Health & Human Services

CONTACT: Bill Stokesbary

DIVISION NAME: 2400 Community Health Services

TELEPHONE: 343-6735

BUDGET UNIT (DEPTID NUMBER AND NAME): 2460 Reproductive Health

APPROVED BY:

(Signature of Department Director)

SERVICES PROVIDED:

The Reproductive Health Clinic (RHC) provides clinical services including screening, diagnosis, treatment, counseling, partner notification, and follow-up for sexually transmitted infections, contraceptive methods, and evaluation and management of cervical dysplasia. Outreach and community activities include health promotion and disease prevention education. The RHC functions as a training site for health care professionals to expand reproductive health management skills.

BUDGET PREPARATION METHODOLOGY:

Charges from this unit are to grant programs administered by this division. The appropriate level of indirect costs is determined annually through the Division's Indirect Cost Rate. That rate is converted to estimated dollars for the next calendar year's grants and utilized to determine the budgeted charges to grants for the next budget year.

CHARGE-OUT METHODOLOGY:

☐ Allocating

☒ Non-allocating

☐ Combination

Any amounts necessary in budget preparation will be charged to the grant via a journal entry.

REVISION DATE:

22 May 02

OMB DIRECTOR SIGNATURE:

Cheryl Frasca

INTRAGOVERNMENTAL CHARGES METHODOLOGIES

DEPARTMENT NAME: 2000 Health & Human Services

CONTACT: Bill Stokesbary

DIVISION NAME: 2400 Community Health Services

TELEPHONE: 343-6735

BUDGET UNIT (DEPTID NUMBER AND NAME): 2480 Women, Infants and Children (WIC)

APPROVED BY:

(Signature of Department Director)

SERVICES PROVIDED:

Provides screening for financial and nutritional risk eligibility according to federal WIC guidelines. Issue vouchers for WIC approved foods. Provides counseling referral, nutritional education, and vendor monitoring. Provides supervisory support to WIC grant.

BUDGET PREPARATION METHODOLOGY:

Charges from this unit are to grant programs administered by this division. The appropriate level of indirect costs is determined annually through the Division's Indirect Cost Rate. That rate is converted to estimated dollars for the next calendar year's grants and utilized to determine the budgeted charges to grants for the next budget year.

CHARGE-OUT METHODOLOGY:

☐ Allocating

☒ Non-allocating

☐ Combination

Any amounts necessary in budget preparation will be charged to the grant via a journal entry.

REVISION DATE:

22 May 02

OMB DIRECTOR SIGNATURE:

Cheryl Frasca

INTRAGOVERNMENTAL CHARGES METHODOLOGIES

DEPARTMENT NAME: 2000 Health & Human Services

CONTACT: Bill Stokesbary

DIVISION NAME: 2500 Environmental Services

TELEPHONE: 343-6735

BUDGET UNIT (DEPTID NUMBER AND NAME): 2510 Administration

APPROVED BY:

(Signature of Department Director)

SERVICES PROVIDED:

The Environmental Services Administration unit provides management direction, policy guidance, and direct administrative assistance supporting the execution of all division activities, including supervising the department's environmental health permit/inspection functions and ongoing monitoring and evaluation programs, and providing advisory assistance to the Director, Administration, and Assembly on environmental health issues.

BUDGET PREPARATION METHODOLOGY:

Budgeted amounts are based on the ratio of positions authorized in each section within the Environmental Services Division. The number of authorized positions within these sections is based on the most current information adjusted for anticipated personnel increases/decreases. The resulting data is entered into the allocation table as raw data and is charged to each general government budget. An amount will be applied to the appropriate grant based on the administrative/management support provided to the Air Quality grant program.

CHARGE-OUT METHODOLOGY:

☐ Allocating

☐ Non-allocating

☒ Combination

The percentages developed during budget preparation are entered in the cost allocation tables of the financial information system. Each month, the system automatically applies the percentages to the total expenditures for this unit and allocates the costs.

If flat rate amounts were necessary in budget preparation, the amounts are charged to the grants via a journal entry.

REVISION DATE:

22 May 02

OMB DIRECTOR SIGNATURE:

Cheryl Frazer

INTRAGOVERNMENTAL CHARGES METHODOLOGIES

DEPARTMENT NAME: 2000 Health & Human Services

CONTACT: Bill Stokesbary

DIVISION NAME: 2500 Environmental Services

TELEPHONE: 343-6735

BUDGET UNIT (DEPTID NUMBER AND NAME): 2520 Public Services

APPROVED BY:

(Signature of Department Director)

SERVICES PROVIDED:

The Public Services Section provides over the counter and telephone customer services and cashiering activities for the Environmental Services programs.

BUDGET PREPARATION METHODOLOGY:

Budgeted amounts are based on the estimated percentage of time the Public Services Section devotes to providing customer services for each Environmental Services program. This percentage is estimated annually based on prior year's experience.

CHARGE-OUT METHODOLOGY:

☒ Allocating

☐ Non-allocating

☐ Combination

The percentages developed during budget preparation are entered in the cost allocation tables of the financial information system. Each month the system automatically applies the percentages to the total expenditures for this unit and allocates the costs to the various sections with the Environmental Services Division.

REVISION DATE:

22 May 02

OMB DIRECTOR SIGNATURE:

Cheryl Frasca

INTRAGOVERNMENTAL CHARGES METHODOLOGIES

DEPARTMENT NAME: 2000 Health & Human Services

CONTACT: Bill Stokesbary

DIVISION NAME: 2500 Environmental Services

TELEPHONE: 343-6735

BUDGET UNIT (DEPTID NUMBER AND NAME): 2560 Environmental Sanitation

APPROVED BY:

(Signature of Department Director)

SERVICES PROVIDED:

Protect the public from foodborne illnesses and health hazards by enforcing local ordinances. Issue food, facility, and pesticide and noise permits. Inspect public facilities (i.e. restaurants, groceries, and pools) on a scheduled and complaint-responsive basis. Resolve nuisance, noise, and housing complaints.

BUDGET PREPARATION METHODOLOGY:

Budgeted amounts are based on the Environmental Sanitation inspection renewal permits for six Municipal swimming pools operated by Parks & Recreation.

CHARGE-OUT METHODOLOGY:

☐ Allocating

☒ Non-allocating

☐ Combination

Charges will be done manually via a journal entry.

REVISION DATE: 22 May 02

OMB DIRECTOR SIGNATURE:

Cheryl Frasca

INTRAGOVERNMENTAL CHARGES METHODOLOGIES

DEPARTMENT NAME: 2000 Health & Human Services

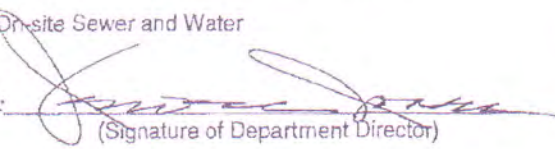
CONTACT: Bill Stokesbary

DIVISION NAME: 2500 Environmental Services

TELEPHONE: 343-6735

BUDGET UNIT (DEPTID NUMBER AND NAME): 2570 On-site Sewer and Water

APPROVED BY:


(Signature of Department Director)

SERVICES PROVIDED:

Cancelled.

BUDGET PREPARATION METHODOLOGY:

CHARGE-OUT METHODOLOGY:

☐ Allocating

☐ Non-allocating

☐ Combination

REVISION DATE: 22 May 02

OMB DIRECTOR SIGNATURE:

Cheryl Frasca

INTRAGOVERNMENTAL CHARGES METHODOLOGIES

DEPARTMENT NAME: Office of Planning, Development & Public Works

CONTACT: Robert Moore

DIVISION NAME: Anchorage Memorial Cemetery

TELEPHONE: 343-8180

BUDGET UNIT (DEPTID NUMBER AND NAME): ²⁷¹⁰ 7150 Anchorage Memorial Cemetery

APPROVED BY:


(Signature of Department Director)

SERVICES PROVIDED:

Provides a shared Municipal owned facility with Community Work Service.

BUDGET PREPARATION METHODOLOGY:

The Anchorage Memorial Cemetery and Community Work Service have agreed to share the operating costs of the facility located at 535 E. 9th Avenue. Facility Maintenance charges the Anchorage Memorial Cemetery for the costs of operating the facility and then the Anchorage Memorial Cemetery in turn charges the Community Work Service for their portion of the costs.

CHARGE-OUT METHODOLOGY:

☐ Allocating

☒ Non-allocating

☐ Combination

The Community Work Service is charged an agreed upon flat rate for their portion of the operating costs of the facility through a journal entry.

REVISION DATE: 22 May 02

OMB DIRECTOR SIGNATURE: Cheryl Frasca