

**Municipality of Anchorage**

— Alaska —

**2011**

**Office of Economic &  
Community Development  
Departments**

**Indirect Cost Proposal**



Dan Sullivan  
Mayor

Lucinda Mahoney  
Chief Fiscal Officer

# ECONOMIC AND COMMUNITY DEVELOPMENT

- 2011 -

## INDIRECT COST PROPOSAL

### TABLE OF CONTENTS

DESCRIPTION	PAGE
<b>GENERAL INFORMATION</b>	
Certification	1
Introduction	2
Federal Department of Health & Human Services letter dated August 19, 1986	3
Organizational Charts, 1/1/2008	4
<b>INDIRECT COST RATES</b>	
Library	7
Eagle River/Chugiak Parks & Recreation	8
Anchorage Parks & Recreation Department	9
Girdwood Parks & Recreation	10
Department of Neighborhoods	11
<b>2009 FINANCIAL INFORMATION</b>	
Summary of Costs	
Office of Economic & Community Development	12
Anchorage Parks & Recreation	16
Department of Neighborhoods	17
Detail of Costs	
Office of Economic & Community Development	18
Anchorage Parks & Recreation	
Department of Neighborhoods	
Detail of Intragovernmental Charges from Central Service Plan Units	
Office of Economic & Community Development	40
Anchorage Parks & Recreation	
Department of Neighborhoods	
Detail of Intragovernmental Charges Treated as Direct Costs	
Office of Economic & Community Development	51
Anchorage Parks & Recreation	
Department of Neighborhoods	
Detail of Unallowable Costs, Direct and Indirect	
Office of Economic & Community Development	54
Anchorage Parks & Recreation	
Department of Neighborhoods	
<b>INTRAGOVERNMENTAL CHARGE-OUT METHODOLOGIES</b>	


5105	OECD Administration	55
5210	Museum	58
5501	Anchorage Parks & Recreation Administration	57
5504	Park Planning - Girdwood & Eagle River Parks	58
5504	Park Planning - Capital Improvement Plan	59
5506	Horticulture	60
5507	Volunteer Program	61
5508	Community Work Service	62
5602	Recreation, Park District Admin & Facility Ops	63
5603	Recreation Facilities	64
5604	Aquatics	65

## CERTIFICATE OF INDIRECT COSTS


This is to certify that I have reviewed the indirect cost proposal submitted herewith and to the best of my knowledge and belief:

- (1) All costs included in this proposal to establish billing or final indirect cost rates for the period January 1 through December 31, 2011 are allowable in accordance with the requirements of the Federal award(s) to which they apply and OMB Circular A-87, "Cost Principles for State and Local Governments." Unallowable costs have been adjusted for in allocating costs as indicated in the Central Services Plan.
- (2) All costs included in this proposal are properly allocable to Federal awards on the basis of a beneficial or a causal relationship between the expense incurred and the agreements to which they are allocated in accordance with applicable requirements. Further, the same costs that have been treated as indirect costs have not been claimed as direct costs. Similar types of costs have been accounted for consistently and the Federal Government will be notified of any accounting changes that would affect the predetermined rate.
- 3) All costs are reported on a GAAP basis for the most recent year completed, or Municipal fiscal year 2009, which is the calendar year 2009.

I declare the foregoing is true and correct

  
\_\_\_\_\_  
(Signature)  
Date: 7/21/11

Lucinda Mahoney  
Chief Fiscal Officer  
Municipality of Anchorage  
Anchorage, Alaska

  
\_\_\_\_\_  
(Signature)  
Date: 7/15/11

William J. Wilks  
Preparer  
AKT LLP  
800 East Diamond Road STE 3-670  
Anchorage, Alaska

## **INTRODUCTION to INDIRECT COST PROPOSAL**

This document presents the Indirect Cost Proposal for the Municipality of Anchorage's Office of Economic and Community Development (OECD), for the period January 1, 2011 through December 31, 2011. This proposal supports our department's claim to indirect costs on grants and contracts with Federal and State government agencies. Costs presented in this proposal are based on calendar year 2009 (CY09) actual expenses.

One indirect cost rate is developed for each division within the department. This percentage of indirect costs is computed based on total direct costs for the division. Since most grants with Municipal employee support are billed for that support through the Municipal IGCS (Intragovernmental Charge System) the salaries and benefits do not appear as identifiable salaries and benefits amounts upon which to calculate an indirect cost rate based on direct salaries or salaries and benefits.

Costs included in the indirect cost rates include intragovernmental charges from department and division administrative units. Indirect costs also include a share of the allocated central service units' costs as identified in the Municipality of Anchorage's 2011 Central Services Plan. In addition, intragovernmental charges from central service units, department and division charging units have been adjusted to subtract costs that are unallowable according to OMB Circular A-87, "Cost Principles for State and Local Governments."



DEPARTMENT OF HEALTH & HUMAN SERVICES

Office of the  
Regional Director

Region X  
M/S 202  
2901 Third Avenue  
Seattle, WA 98121

August 19, 1986

Mr. Bob Smith  
Municipal Manager  
Municipality of Anchorage  
Pouch 6-650  
Anchorage, Alaska 99502-0650

Dear Mr. Smith:

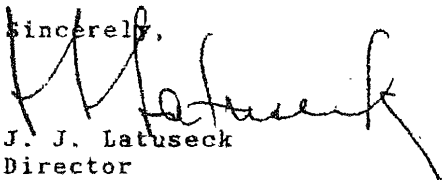
As the cognizant Federal agency, this is to inform you that future central services cost allocation plans and departmental/divisional indirect cost proposals will not have to be submitted for review by this office.

You are advised that central services cost allocation plans and departmental/divisional indirect cost proposals must be prepared in accordance with the appropriate Federal cost principles and available as of the time a claim is made against a Federal award. The documentation in support of the claim must be retained for a period of three years.

This policy will remain in effect until advised otherwise by this office or a newly designated cognizant Federal agency.

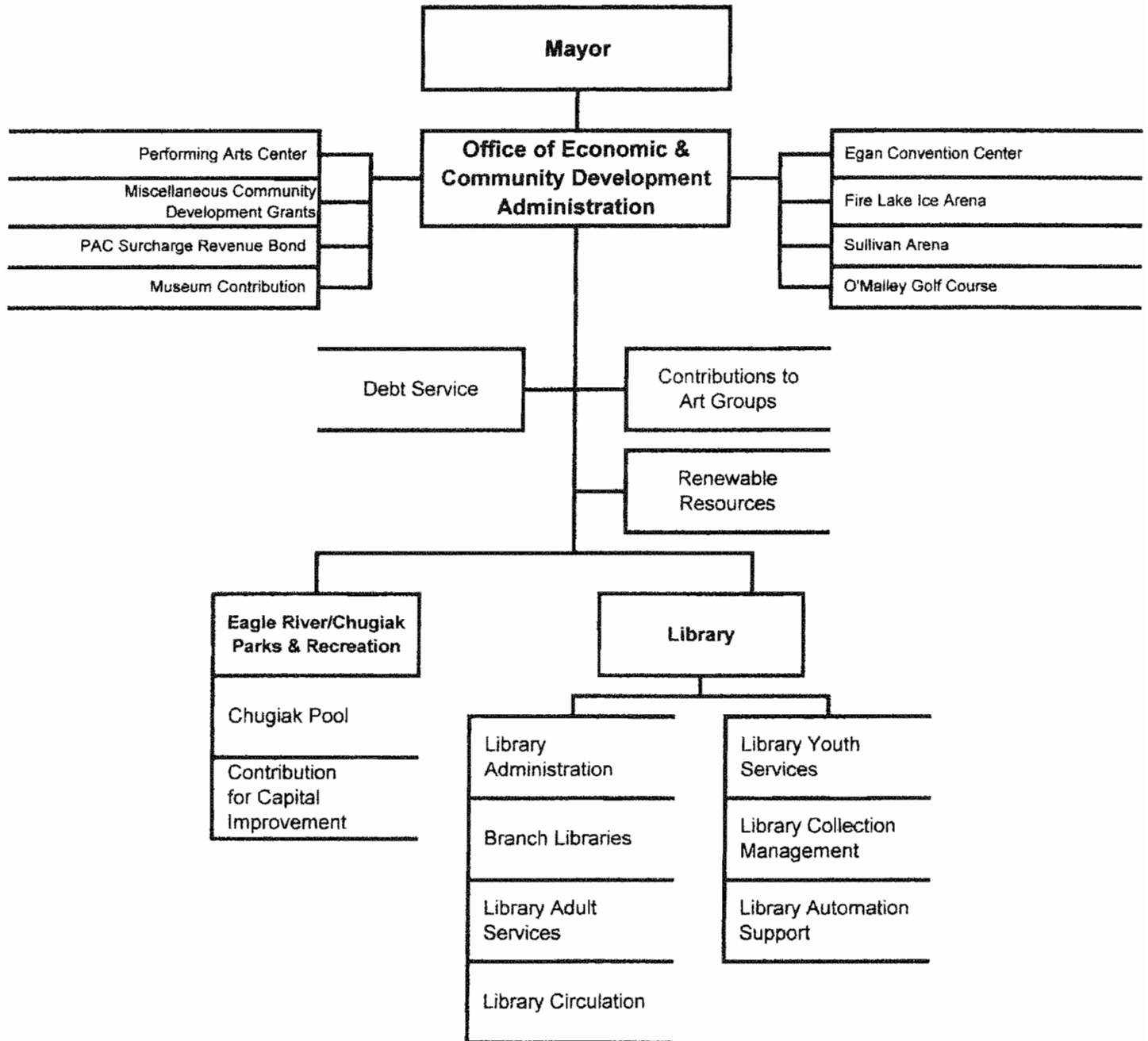
We remain available to answer technical questions or otherwise provide information consistent with the functions of this office.

Sincerely,

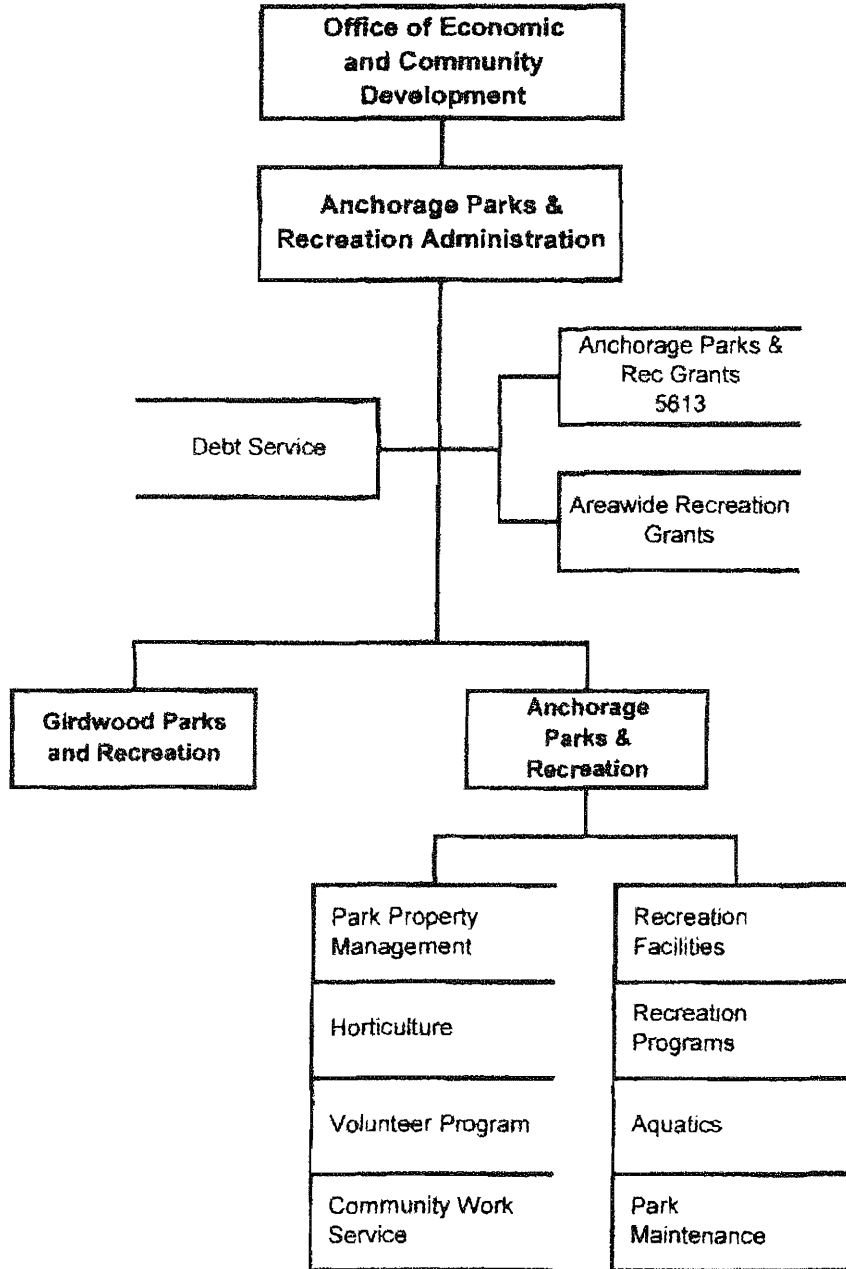


J. J. Latuseck  
Director  
Division of Cost Allocation

# OFFICE OF ECONOMIC & COMMUNITY DEVELOPMENT



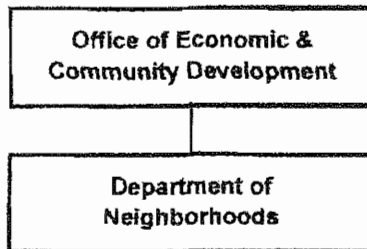
# Anchorage Parks & Recreation



---

# DEPARTMENT OF NEIGHBORHOODS

---



<b>INDIRECT COST RATES</b>
----------------------------

Library	7
Eagle River/Chugiak Parks & Recreation	8
Anchorage Parks & Recreation Department	9
Girdwood Parks & Recreation	10
Department of Neighborhoods	11

## INDIRECT COST RATE COMPUTATION

### LIBRARY

<u>COST ITEM</u>	<u>AMOUNT</u>
Actual Indirects	2,597,594
Allocation of Net Costs (over/underbilled costs) as Indirects From: Dept Admin.	31,392
<b>Total Indirects</b>	<u>\$2,628,985</u>
<b>Base (Total Directs)</b>	<u>8,066,344</u>
<b>2011 Rate</b>	32.6%

# INDIRECT COST RATE COMPUTATION

## EAGLE RIVER PARKS & RECREATION

<u>COST ITEM</u>	<u>AMOUNT</u>
Actual Indirects	407,870
Allocation of Net Costs (over/underbilled costs) as Indirects From: Dept Admin.	5,232
<b>Total Indirects</b>	<u>\$413,102</u>
<b>Base (Total Directs)</b>	<u>1,815,785</u>
<b>2011 Rate</b>	22.8%

**INDIRECT COST RATE COMPUTATION**  
**ANCHORAGE PARKS AND RECREATION DEPARTMENT**

<b>COST ITEM</b>	<b>AMOUNT</b>
Actual Indirects	3,619,193
Allocation of Net Costs (over/underbilled costs) as Indirects From: Office of Econ & Comm Develop Admin.	34,209
<b>Total Indirects</b>	<b>\$3,653,402</b>
<b>Base (Total Directs)</b>	<b>14,929,649</b>
<b>2011 Rate</b>	<b>24.5%</b>

## **INDIRECT COST RATE COMPUTATION**

### **GIRDWOOD PARKS & RECREATION**

Cost rate is the same as the rate for Anchorage Parks and Recreation Department since all oversight and management of Girdwood projects and activities is handled by Parks and Recreation Department personnel.

## INDIRECT COST RATE COMPUTATION

DEPARTMENT OF NEIGHBORHOODS  
(formerly the Community Development Division  
within the Office of Economic and Community Development)

<u>COST ITEM</u>	<u>AMOUNT</u>
Actual Indirects	258,660
Allocation of Net Costs (over/underbilled costs) as Indirects From: Dept Admin.	2,415
<b>Total Indirects</b>	<u>\$261,075</u>
<b>Base (Total Directs)</b>	<u>6,179,747</u>
<b>2011 Rate</b>	4.2%

<b>2009 FINANCIAL INFORMATION</b>
-----------------------------------

Summary of Costs	
Office of Economic & Community Development	12
Anchorage Parks & Recreation	16
Department of Neighborhoods	17
Detail of Costs	
Office of Economic & Community Development	18
Anchorage Parks & Recreation	
Department of Neighborhoods	
Detail of Intragovernmental Charges from Central Service Plan Units	
Office of Economic & Community Development	40
Anchorage Parks & Recreation	
Department of Neighborhoods	
Detail of Intragovernmental Charges Treated as Direct Costs	
Office of Economic & Community Development	51
Anchorage Parks & Recreation	
Department of Neighborhoods	
Detail of Unallowable Costs, Direct and Indirect	
Office of Economic & Community Development	54
Anchorage Parks & Recreation	
Department of Neighborhoods	



**Municipality of Anchorage  
Indirect Cost Proposal  
Using Results as of December 31, 2009**

Dept ID	Description	Direct Expenditures	IGC Expenditures	Total Direct and IGC Expenditures	Total Billings (IGC) & Program Revenues	Adjustment for Billings to Non-Chargeout units	Net Costs After Adj	Non-Allowable Expense Adj			Adjusted Net Allowable Costs	Allowable IGCs Treated as Indirect Costs	Allowable Directs	
								Charges From Central Services Plan IGCs	% Non-Allow (from CSP)	From Central Services Plan				
<b>ECONOMIC &amp; COMMUNITY DEVELOPMENT DEPARTMENT</b>														
5105	Economic & Comm Desktop Admin	923,068	519,151	1,442,218	(894,168)	558,053	558,053	438,687	14.39%	63,142	62,468	402,468	12,973	1,229
5108	Performing Arts Center	1,173,500	15,153	1,188,653		1,188,653	1,188,653	6,610	14.39%	951	1,173,500	14,202	24,760	2,016,152
5109	Egan Center/Tourism	2,513,772	28,921	2,542,692	(96,290)	2,446,412	2,446,412	12,373	14.39%	1,780	500,000	2,040,912	7,871	600
5112	Misc Community Develop Grants	510,301	8,960	519,260		519,260	519,260	4,791	14.39%	688	510,301	8,270	327,612	17,935
5113	Performing Arts Center		382,885	382,885		382,885	382,885	260,068	14.39%	37,416	345,247	251,355	247,697	15,228
5114	Egan Convention Center		275,809	275,809		275,809	275,809	169,978	14.39%	24,454	287,977	282,345	8,463	85,014
5115	Contracted Facilities		289,321	289,321		289,321	289,321	187,511	14.39%	26,977	260,646	247,697	24,964	2,323
5116	Fire Lake Rec Center	94,200	9,686	104,086		104,086	104,086	4,225	14.39%	608	6,000	120,807	10,357	110,550
5117	Sullivan Arena		711,636	711,636	(238,752)	473,086	473,086	236,752	14.39%	31,192	337,813	37,277	4,404	26,711
5118	O'Malley Golf Course		29,148	29,148	(83,146)	(53,998)	(53,998)	28,148	14.39%	1,871	171,694	815	648	69
5119	Renewable Resources	112,121	19,414	131,535		131,535	131,535	511	14.39%	74	224,504	3,403	3,403	(3,403)
5120	Eagle River Park Facilities	26,201	31,867	58,068		58,068	58,068	2,215	14.39%	22,057	22,057			
5122	PAC Revenue Bond	337,813	5,686	343,499	(6,361)	337,138	337,138	794	14.39%	26,980	45,850			
5123	Debt Service (101)	171,684	886	172,570	(407,200)	(60,368)	(60,368)	337,813	14.39%	712	337,813			
5123	Contributions to Art Groups	224,504	3,974	228,478	(1)	172,692	172,692	511	14.39%	74	171,694	815	648	69
5142	ChRS Historic Preservation Interest	22,057	794	22,851	(41,589)	22,851	22,851	2,215	14.39%	22,057	22,057			
54630G	Anc Parks FDN Operating	393,309		393,309	(75,730)	393,309	393,309	794	14.39%	75,730	26,980	45,850		49,850
54834G	Salmon in the City ADFG ECD - UAA Donations	75,730		75,730		75,730	75,730		14.39%					
54836G	SOA Misc ECD Grants								14.39%					
54846G	Salmon in City Conoco								14.39%					
54858G	NP's Iditarod Trail Grant								14.39%					
1615	Anchorage Golf Course CIP	10,333	10,228	20,560	(131,831)	(111,271)	(111,271)	131,831	14.39%	131,831	20,560	8,756	11,804	
1619	Valley River Center	3,852,515		3,852,515	(5,738,574)	(1,886,059)	(1,886,059)	5,738,574	14.39%	5,738,574	3,852,515	2,090,817	8,756	1,761,699
1620	Mr View Library CIP Donations	1,132,396		1,132,396	(1,132,396)	1,132,396	1,132,396	1,132,396	14.39%	1,132,396	1,132,396			
1621	08 Bond Facilities Museum	879,983		879,983	(979,983)	979,983	979,983	979,983	14.39%	979,983	979,983			
1622	ACPA Reserve Account	242,786	6,392	249,178	(505,866)	(256,707)	(256,707)	505,866	14.39%	340,016	141,853	107,325	5,473	101,853
1623	Egan Center Reserve Account	19,940	26,946	46,886	(340,000)	(340,000)	(340,000)	340,016	14.39%	340	340	43,448	22,968	20,463
1624	2008 Prop 1 Bond Reserves	64,450	23,013	87,463	(860,088)	(592,626)	(592,626)	87,463	14.39%	680,068	87,463	19,702	17,513	67,761
1625	Ben Boeke Reserve Account	45,067	20,458	65,525	(170,442)	(104,919)	(104,919)	65,523	14.39%	170,442	65,523	66,523	17,513	48,010
1628	Sullivan Arena Reserve Account	39,703		39,703	(79,407)	(39,703)	(39,703)	79,407	14.39%	79,407	39,703			
1633	Egan Center Upgrades Civic								14.39%					
Total CRS Administration		12,981,656	2,385,645	15,367,301	11,047,601	3,415,475	3,415,475	14,463,136	1,334,478	191,598	7,453,993	6,420,984	1,583,127	4,425,410
5204	Museum Capital Projects	4,117,824		4,117,824		4,117,824	4,117,824		14.39%			4,117,824		
5210	Museum								14.39%					
Total Museum		4,117,824	0	4,117,824	0	4,117,824	4,117,824	0	0	0	0	4,117,824	0	0



Municipality of Anchorage Indirect Cost Proposal Using Results as of December 31, 2009												
Dept ID	Description	Direct Expenditures	IOC Expenditures	Total Direct and IOC Expenditures	Total Billings (IOC) & Program Revenues	Net Costs	Adjustment for Billings to Non-Chargeout units	Net Costs, After Adj.	Non-Allowable Expenses Adj		Allowable IGCs Treated as Indirect Costs	Allowable Directs
									Total Charges From Central Services, Plan IGCs	% Net Allowable (from CSP)		
5124	GWUB Resurson FD FF&E	3,724		3,724		3,724		3,724		14.38%		3,724
5316G	2003-2004 Misc Library Donations	0,465		0,465		0,465		0,465		14.38%		0,465
53163G	Library Materials Donations									14.38%		
53164C	Misc. Library Donations	34,654	486	35,140	(142,253)	(107,153)	142,293	35,140	70	14.38%	35,070	34,654
5317G	Friends - Library Donations	2,321		2,321		2,321		2,321		14.38%	2,321	2,321
5317G	Big Read Book Donations	669,042	1,527,918	2,196,959	(140,033)	2,456,959	140,033	2,596,959	227,077	14.38%	2,369,144	785,448
5355	Library Administration	1,710,735	815,363	2,526,097	(78,850)	2,447,247	78,850	2,526,097	106,573	14.38%	2,392,483	1,719,236
5364	Branch Libraries	1,455,866	133,623	1,587,719	(20,722)	1,566,996	20,722	1,587,719	18,703	14.38%	1,567,203	79,360
5371	Library Adult Services	1,157,153	163,501	1,320,654	(184,287)	1,196,357	184,297	1,320,654	20,579	14.38%	1,298,511	1,188,724
5373	Library Youth Services	585,951	76,522	662,473		662,473		662,473	7,033	14.38%	653,614	33,890
5381	Library Technical Support Sys	602,992	106,699	712,691		712,691		712,691	13,706	14.38%	696,985	84,671
5382	Library Automation Support	337,273	17,623	354,896	(23,164)	331,732	23,164	354,896	2,235	14.38%	292,409	12,675
53917G	Public Library Assistance											279,734



Municipality of Anchorage  
Indirect Cost Proposal  
Using Results as of December 31, 2009

Dept ID	Description	Direct Expenditures	KGC Expenditures	Total Direct and KGC Expenditures	Total Billings (KGC) & Program Revenues	Net Costs	Adjustment for Billings to Non-Chargeout units	Net Costs After Adj	Total Charges From Central Services Pled (KGCs)	Non-Allowable Expenses Adj			Adjusted Net Allowable Costs	Allowable KGCs Treated as Indirect Costs	Allowable Directs
										% Not Allowable (from CSP)	From Central Services Plan	Within Unit			
53918G	Public Library Assistance	65,121		65,121	(30,706)	34,415	30,706	65,121	14,39%		10,446	54,673		54,673	
53937G	800k ILL & Reference Backup								14,39%						
53938G	800k ILL & Reference Backup	30,808		30,808	(31,250)	31,250	31,250	31,250	14,39%	92		31,158		31,158	
53947G	Ready to Read Grants		642	642					14,39%						
53948G	Ready to Read Grants	33,978		33,978	(34,642)	34,642	34,642	34,642	14,39%	95	938	33,608		33,608	
53958G	Net Lender 2008		1	1	(1)				14,39%	0					
53978G	The Big Read 2008	(2,321)		(2,321)	(1)				14,39%					(1)	
53979G	Community Read	26,234	106	26,340	(6,000)	20,339	6,000	26,339	14,39%		832	(2,321)		(2,321)	
53988G	Travel Grant Pass-Thru	3,763	10	3,773	(2,985)	788	2,985	3,773	14,39%	1		25,907		25,907	
53989G	Library Collection Development	1,144,073	17,125	1,161,198	(38,025)	1,161,198	38,025	1,161,198	14,39%	2,366	35,000	1,123,602		1,123,602	
53919G	Public Library Assistance	3,075		3,075	(28,716)	28,716	28,716	28,716	14,39%	108		4,977		4,977	
53939G	800k ILL and Reference Backup	23,926		23,926	(36,638)	36,638	36,638	36,638	14,39%	359		26,027		26,027	
53949G	Ready to Read Grants	33,845	242	34,087	(13,212)	13,212	13,212	13,212	14,39%	35		13,177		13,177	
53959G	Net Lender 2009	12,870	876	13,746	(20,000)	11,746	20,000	13,746	14,39%	128		3,422		3,422	
53970G	Community Read 2010	2,672	33	2,705	(1,833)	1,833	1,833	1,833	14,39%	5		1,628		1,628	
53989G	2009 Continuing Education	1,900		1,900											
	Total Library	7,946,951	3,273,382	11,220,333	(8,134,951)	10,408,917	813,416	11,220,333	2,784,102	400,543	155,653	10,663,938	2,597,594	8,066,344	



**Municipality of Anchorage  
Indirect Cost Proposal  
Using Results as of December 31, 2009**

Dept ID	Description	Direct Expenditures	ISC Expenditures	Total Direct and ISC Expenditures	Total Billings (RGC) & Program Revenues	Net Costs	Adjustment for Billings to Non-Chargeout units	Net Costs After Adj	Total Charges From Central Services Plan (ISCs CSP)	% Allowable (from CSP)	Non-Allowable Expense Adj		Adjusted Net Allowable Costs	Allowable IGCA Treated as Indirect Costs	Allowable Directs
											From Central Services Plan	Within Unit			
5470	Eagle River/Chugiak Parks	1,036,747	286,502	1,325,249	(185,119)	1,140,131	185,119	1,325,249	220,813	14.39%	32,041	1,261,440	228,264	1,083,176	
5471	E.R. Parks Dept (182)	363,883	3,312	368,974	368,974	368,974	246	368,974	1,712	14.39%	363,883	3,055	2,835	230	
5473	Chugiak Pool	397,727	200,751	598,478	(158,135)	439,343	158,135	598,478	172,773	14.39%	24,856	573,621	183,833	409,888	
5474	Contrib for Cap Improvements	1,422,472	14,968	1,437,468		1,437,468		1,437,468	7,752	14.39%	1,115	15,951	12,838	1,042	
5477	2000 ER Parks & Rec GO Bonds														
5478	2002 ER CHUG P&R BOND	2,633		2,633	(2,633)		2,633	2,633		14.39%	2,633			0	
5479	ER/CH P&R Leg's Grants	4,820		4,820	(9,640)	(4,820)	9,640	4,820		14.39%	4,820			0	
5624	2004 ER/CH P&R Mill Levy	20,916		20,916	(20,916)		20,916	20,916		14.39%		20,916		20,916	
5625	2005 ER/CH P&R Mill Levy	81,369		81,369	(81,369)		81,369	81,369		14.39%		66,249		66,249	
5626	2006 ER/CH P&R Mill Levy	319,034		321,917	(321,917)		321,917	321,917		14.39%	15,120	236,545		236,545	
5627	2007 ER/CH P&R Mill Levy	229,812	2,883	232,695	(229,812)		229,812	229,812		14.39%	83,372	146,480		146,480	
5628	Eagle River P&R	53,777		53,777	(53,777)		53,777	53,777		14.39%	229,132	45,456		45,456	
5629	2009 ER/CH P&R Mill Levy				(1,416,860)	(1,416,860)	1,416,860			14.39%	9,318				
	Total ER Chugiak Parks & Rec	3,834,770	508,443	4,443,213	2,480,986	1,962,217	2,480,986	4,443,213	403,049		57,966	2,223,855	407,870	1,815,785	
	Total Economic & Community Develop	28,981,001	6,167,470	35,158,471	(15,258,239)	19,900,232	14,342,073	34,244,305	4,521,829		850,084	9,770,727	4,598,591	14,307,539	



**Municipality of Anchorage  
Indirect Cost Proposal  
Using Results as of December 31, 2009**

Dept ID	Description	Direct Expenditures	IGC Expenditures	Total Direct and IGC Expenditures	Total Billings (IGC & Program Revenues)	Adjustment for Billings to Non-Chargeout units	Net Costs After Adj	Non-Allowable Expense Adj	% Not Allowable (from CSP)	From Central Services Plan	From Central Services Plan	Within Unit	Adjusted Net Allowable Costs	Allowable as Indirect Credits	Allowable Direct
<b>ANCHORAGE PARKS AND RECREATION</b>															
5121	DEAR Service (181 Fund)	2,568,179	22,459	2,610,638	(9)	1,289,607	2,610,638	2,610,638	14.39%	11,610	2,600,028	2,600,028	333,413	933,413	
5402	Parks Legislative Grants	637,168	12,355	649,523	(649,523)	1,289,607	649,523	649,523	14.39%	13,322	636,201	636,201	6,511	6,511	
5417	Campbell Creek Rehab.	1,144	4,707	5,851	(5,851)	93,458	93,458	93,458	14.39%	128	93,270	93,270	5,512	5,512	
5424	Misc Capital Funding	90,987	2,189	93,176	(93,176)	37,807	37,807	37,807	14.39%	128	37,679	37,679	120	120	
5430	H2O268/Recreation-Pk/Rec B5	37,887	120	38,007	(38,007)	75,613	37,807	37,807	14.39%	128	37,679	37,679	120	120	
5431	HUD Recreational Facility	457,675	2,991	460,666	(460,666)	921,332	460,666	460,666	14.39%	128	459,488	459,488	4,666	4,666	
5432	1862.80 Parks & Rec Bonds	111,527	(3,014)	108,513	(108,513)	204,829	111,527	111,527	14.39%	128	111,400	111,400	93,422	93,422	
5435	19 Anch Parks & Rec Bonds	479,708	(3,014)	476,694	(476,694)	476,694	476,694	476,694	14.39%	128	476,566	476,566	237,578	237,578	
5436	2000 Anch Parks & Rec GO Bonds	5,618		5,618	(5,618)	7,206	6,618	6,618	14.39%	128	6,490	6,490	8,618	8,618	
5482G	Citizens Contributions														
5470	96 Eagle River/Chug Bonds	429,316	33,727	463,043	(463,043)	408,786	463,043	463,043	14.39%	128	462,815	462,815	183,245	183,245	
5480	Greenwood Parks & Rec	53,594	10,676	64,270	(64,270)	128,949	64,270	64,270	14.39%	128	64,142	64,142	28,908	28,908	
5481	2006 Wheelchair Games														
5491	Trails CIB														
5492	Park Development														
5496	Local Funding for P&R CIP														
5497	Anchorage Park Foundation														
5498	Anchorage Park & Rec Bonds	418,321	295,980	714,301	(714,301)	714,301	714,301	714,301	14.39%	128	714,173	714,173	688,181	688,181	
5501	Parks & Beautification Admin	696,705	555,310	1,252,015	(1,252,015)	1,241,785	1,252,015	1,252,015	14.39%	128	1,251,887	1,251,887	8,478	8,478	
5502	Park Maintenance	3,413,012	914,687	4,327,699	(4,327,699)	4,311,640	4,327,699	4,327,699	14.39%	128	4,327,571	4,327,571	4,165,658	4,165,658	
5504	Park Property Management	615,864	288,333	904,197	(904,197)	439,987	904,197	904,197	14.39%	128	904,069	904,069	866,318	866,318	
5506	Horticulture	2,257,911	222,869	2,480,780	(2,480,780)	2,162,716	2,480,780	2,480,780	14.39%	128	2,480,652	2,480,652	2,371,052	2,371,052	
5507	Volunteer Program	271,759	43,979	315,738	(315,738)	315,738	315,738	315,738	14.39%	128	315,610	315,610	310,068	310,068	
5508	Community Work Service	560,124	94,018	654,142	(654,142)	567,909	654,142	654,142	14.39%	128	654,014	654,014	613,433	613,433	
5509	Sports and Operations	1,308,696	1,231,340	2,540,036	(2,540,036)	571,943	2,540,036	2,540,036	14.39%	128	2,539,808	2,539,808	2,380,960	2,380,960	
5503	Recreation Centers & Programs	1,653,993	428,166	2,082,159	(2,082,159)	1,913,872	2,082,159	2,082,159	14.39%	128	2,082,031	2,082,031	2,026,379	2,026,379	
5504	Aquatics	2,415,942	662,813	3,078,755	(3,078,755)	2,134,874	3,078,755	3,078,755	14.39%	128	3,078,627	3,078,627	2,921,236	2,921,236	
5611	Non-Profit Funding (ARCA)	98,000	1,633	99,633	(99,633)	99,633	99,633	99,633	14.39%	128	99,505	99,505	98,000	98,000	
5613	Anch Parks & Rec Grant-161	561,980	5,859	567,839	(567,839)	567,839	567,839	567,839	14.39%	128	567,711	567,711	5,507	5,507	
54857C	700 Utilized Trail Grant														
54858G	2007 NPS Iditarod Trail Grant														
54899C	NPS-Downtown Walking Tour														
5490	Leid Acquisition														
Total		18,413,328	4,888,971	24,302,299	(24,302,299)	17,460,648	24,302,299	24,302,299	14.39%	3,657,683	20,644,616	20,644,616	18,824,616	3,819,193	14,825,423

**ALLOCATIONS OF UNALLOWABLE COSTS FROM ADMIN UNITS**

UNIT	Amount (over-Funder billed)	2009 Distribution Percent	Direction	Flow Thru
Office of Econ & Comm Develop Admin	34,209	100%	AP-RR Admin	84,206
P&R Debit/ASSUMANT Anch			Does not Allocate	
Anchorage Park Foundation			Does not Allocate	
1511 - 13 - Non-Profit Funding			Does not Allocate	



**Municipality of Anchorage  
Indirect Cost Proposal  
Using Results as of December 31, 2009**

Dept ID	Description	Direct Expenditures	IGC and IGC Expenditures	Total Direct and IGC Expenditures	Total Billings (IGC) & Program Revenue	Net Costs	Adjustment for Billing to Non-Chargeout Units	Net Costs After Adj	Total Charges From Central Services Plan (IGC)	% Not Allowable (from C&P)	Non-Allowable Expense Adj	From Central Services Plan	Adjusted Net Allowable Costs	IGCs Treated as Indirect Costs	Allowable Directs
<b>NEIGHBORHOODS</b>															
1509G	CDBG Consolidated Years	13,276		13,276	(12,814)	664	12,814	13,279		14.39%	12,878		400		400
1509K	HOME Consolidated Years	82		82	(82)		82	82		14.39%			92		92
15200G	Historic Surveys HPF OHA	10,000		10,000	(10,070)	(70)	10,070	10,000		14.39%	10,000		18,513		18,513
15233G	CDBG 02	25,482		25,482	(43,741)	(25,482)	43,741	25,482	25	14.39%	6,978	4	14,072		14,072
15235G	CDBG 03	14,062		14,062	(183,906)	(29,866)	183,906	14,073	11	14.39%	1,541	2	8,721		8,721
15236G	CDBG 04	163,894		163,894	(20,478)	(20,478)	20,478	163,906	22	14.39%	1,541	3	(15,365)		(15,365)
15239G	CDBG 05	15,039		15,039	(83,194)	(83,194)	233,343	190,146	(35,518)	14.39%	173,803	(8,418)	22,964		22,964
15237G	CDBG 07	234,898		234,898	(44,549)	(44,549)	644,817	644,817	92	14.39%	343,192	9	301,616		301,616
15238G	CDBG 08	9,841		9,841	(7,926)	(7,926)	7,926	8,226		14.39%	7,926		898		898
15241G	HOME	103,151		103,151	(73,151)	30,000	73,151	103,151	1	14.39%	103,151	0	898		898
15243G	HOME 03	887		887	(887)		887	887		14.39%			16,348		16,348
15244G	HOME 04	732,282		732,282	(517,820)	214,470	517,820	732,280	28	14.39%	715,938	4	8,231		8,231
15245G	HOME 05	55,875		55,875	(55,871)	4	55,871	55,871	36	14.39%	47,874	5	57,240		57,240
15246G	HOME - PY08	209,216		209,216	(209,345)	(127)	209,345	209,345	127	14.39%	152,085	18	47,260		47,260
15248G	HOME 08	474		474	(474)		474	474		14.39%	444,087	47,185	270,701		270,701
15251G	ADDD 07	5,990,398		5,990,398	(5,994,446)	(4,046)	5,994,446	5,990,398	328,047	14.39%	5,436,105	47,185	5,182,325		5,182,325
15252G	ADDD 08	474		474	(474)		474	474		14.39%			474		474
15297G	Weatherization Non-WAP07	474		474	(474)		474	474		14.39%			474		474
15298G	Weatherization Non-WAP 08	5,997,011		5,997,011	(5,994,446)	(2,565)	5,994,446	5,990,398	328,047	14.39%	5,436,105	47,185	5,182,325		5,182,325
15277G	Weatherization WAP-07	449,422		449,422	(450,251)	(829)	450,251	449,422	829	14.39%	448,622	105	450,148		450,148
15299G	SEC 100 Loan Guarantees	175,173		175,173	(285,236)	(110,063)	285,236	175,173	731	14.39%	174,089	105	1,084		1,084
15300G	AMNTA 2008 PLANNING	2,648		2,648	(2,655)	(7)	2,655	2,654	6	14.39%	2,654	1	2,654		2,654
1509H	88 HOME Child				(0)	(0)				14.39%					
15170G	88 HOME Transitional Housing				(0)	(0)				14.39%					
15171G	88 HOME Tech Assst/GM Mgt				(0)	(0)				14.39%					
15911G	CDBG Rehab Loans	92,862		92,862	(92,862)		92,862	92,862		14.39%			92,862		92,862
15944G	HOME Program Income				(0)	(0)				14.39%					
15993G	HUD Rehab Loan Recoveries	432,184		432,184	(42,317)	42,317	50,546	92,862		14.39%			101		101
15223G	CDBG PY03 CDD REHAB	100		100	(28,000)	101	28,000	101		14.39%			101		101
15239G	CDBG 2009	461,205		461,205	(481,205)	101	481,205	461,205	29,041	14.39%	364,880	0	72,147		72,147
15240G	CDBG ARRA 2010 EECBG	5,911		5,911	(5,900)	11	5,900	5,900	10	14.39%	5,890	1	5,330		5,330
15249G	CDBG ARRA 2008	5,125		5,125	(7,113)	(1,988)	7,113	5,125	1,988	14.39%	3,927	289	6,897		6,897
15249G	CDBG ARRA 2008	382,701		382,701	(403,741)	101	403,741	403,741	21,040	14.39%	382,701	3,027	18,013		18,013
15253G	Am Dream Ompyent Initiative 03	7,253		7,253	(7,253)		7,253	7,253	10	14.39%	7,253	1	7,252		7,252
15259G	ADDD 2008	557		557	(559)	2	559	559	2	14.39%	556	0	556		556
15264G	ADDD 2008	46,206		46,206	(46,206)		46,206	46,206		14.39%			46,206		46,206
15910G	84 Home				(0)	(0)				14.39%					
15166G	HOME Grant Programs				(0)	(0)				14.39%					
15176G	CY93 CDGB Project				(0)	(0)				14.39%					
15193G	HOME Grants				(0)	(0)				14.39%					
15900G	84 CDGB Infrastructure				(0)	(0)				14.39%					
15995G	84 CDGB Repavments				(0)	(0)				14.39%					
Total Neighborhoods		9,372,208	316,345	9,688,553	(9,260,815)	427,738	9,341,776	9,688,553	301,970		49,314	2,206,832	6,436,407	259,660	6,176,747
<b>ALLOCATIONS OF UNALLOWABLE COSTS FROM ADMIN UNITS</b>															
UNIT				Amount Under Billed	Distribution Percent	Deviation	Flow Thru								
Office of Econ & Comm. Develop. Admin				2,415	100%	2,415									

2009 Expend - ICP Units  
All Expend and Revenues

Unit	Ledger	Acct	Fund	DeptID	Sum Total Amt	Year
MOABU	ACTUALS	2101	401	1615	0.00	2,009
MOABU	ACTUALS	3101	401	1615	10,332.50	2,009
MOABU	ACTUALS	6500	401	1615	10,227.94	2,009
MOABU	ACTUALS	7999	401	1615	-20,560.44	2,009
MOABU	ACTUALS	9734	401	1615	-79,978.50	2,009
MOABU	ACTUALS	9761	401	1615	-5,780.00	2,009
MOABU	ACTUALS	9767	401	1615	-25,512.00	2,009
MOABU	ACTUALS	2211	401	1619	14,324.34	2,009
MOABU	ACTUALS	2301	401	1619	3,258.60	2,009
MOABU	ACTUALS	3101	401	1619	17,427.80	2,009
MOABU	ACTUALS	3201	401	1619	344.40	2,009
MOABU	ACTUALS	3601	401	1619	313.66	2,009
MOABU	ACTUALS	3803	401	1619	147.52	2,009
MOABU	ACTUALS	3808	401	1619	1,697,161.92	2,009
MOABU	ACTUALS	3814	401	1619	1,377.22	2,009
MOABU	ACTUALS	3819	401	1619	27,342.96	2,009
MOABU	ACTUALS	5202	401	1619	2,064,877.79	2,009
MOABU	ACTUALS	5411	401	1619	20,713.42	2,009
MOABU	ACTUALS	5602	401	1619	5,225.66	2,009
MOABU	ACTUALS	7999	401	1619	-3,852,515.29	2,009
MOABU	ACTUALS	9532	401	1619	31,870.33	2,009
MOABU	ACTUALS	9601	401	1619	-55,929.14	2,009
MOABU	ACTUALS	9825	401	1619	-1,862,000.00	2,009
MOABU	ACTUALS	5201	401	1620	645,396.37	2,009
MOABU	ACTUALS	5202	401	1620	487,000.00	2,009
MOABU	ACTUALS	5404	401	1620	0.00	2,009
MOABU	ACTUALS	7999	401	1620	-1,132,396.37	2,009
MOABU	ACTUALS	5201	401	1621	0.00	2,009
MOABU	ACTUALS	5202	401	1621	979,963.00	2,009
MOABU	ACTUALS	7999	401	1621	-979,963.00	2,009
MOABU	ACTUALS	3101	401	1622	22,662.51	2,009
MOABU	ACTUALS	3601	401	1622	74,756.26	2,009
MOABU	ACTUALS	3802	401	1622	192.56	2,009
MOABU	ACTUALS	3803	401	1622	258.64	2,009
MOABU	ACTUALS	3808	401	1622	1,500.00	2,009
MOABU	ACTUALS	3814	401	1622	1,563.00	2,009
MOABU	ACTUALS	5202	401	1622	124,960.00	2,009
MOABU	ACTUALS	5601	401	1622	16,893.00	2,009
MOABU	ACTUALS	6500	401	1622	6,392.43	2,009
MOABU	ACTUALS	7999	401	1622	-249,178.40	2,009
MOABU	ACTUALS	9672	401	1622	-217,942.63	2,009
MOABU	ACTUALS	9742	401	1622	-408.68	2,009
MOABU	ACTUALS	9761	401	1622	-6,574.00	2,009
MOABU	ACTUALS	9767	401	1622	-31,782.00	2,009
MOABU	ACTUALS	3101	401	1623	15,137.90	2,009
MOABU	ACTUALS	3802	401	1623	212.48	2,009
MOABU	ACTUALS	3803	401	1623	169.04	2,009
MOABU	ACTUALS	3808	401	1623	40.00	2,009
MOABU	ACTUALS	3814	401	1623	1,040.58	2,009
MOABU	ACTUALS	5202	401	1623	340.00	2,009
MOABU	ACTUALS	5601	401	1623	0.00	2,009
MOABU	ACTUALS	6500	401	1623	26,848.27	2,009

2009 Expend - ICP Units  
All Expend and Revenues

Unit	Ledger	Acct	Fund	DeptID	Sum Total Amt	Year
MOABU	ACTUALS	7999	401	1623	-43,788.27	2,009
MOABU	ACTUALS	9534	401	1623	-9,864.85	2,009
MOABU	ACTUALS	9672	401	1623	-250,290.29	2,009
MOABU	ACTUALS	9742	401	1623	-1,147.01	2,009
MOABU	ACTUALS	9761	401	1623	-6,367.00	2,009
MOABU	ACTUALS	9767	401	1623	-28,559.00	2,009
MOABU	ACTUALS	9601	401	1624	-340,000.00	2,009
MOABU	ACTUALS	3101	461	1625	46,849.21	2,009
MOABU	ACTUALS	3601	461	1625	15,013.04	2,009
MOABU	ACTUALS	3814	461	1625	2,587.50	2,009
MOABU	ACTUALS	6500	461	1625	23,012.81	2,009
MOABU	ACTUALS	7999	461	1625	-87,462.56	2,009
MOABU	ACTUALS	9534	461	1625	-468,093.65	2,009
MOABU	ACTUALS	9761	461	1625	-22,061.00	2,009
MOABU	ACTUALS	9767	461	1625	-102,471.00	2,009
MOABU	ACTUALS	3101	401	1628	44,718.28	2,009
MOABU	ACTUALS	3803	401	1628	348.68	2,009
MOABU	ACTUALS	6500	401	1628	20,455.83	2,009
MOABU	ACTUALS	7999	401	1628	-65,522.79	2,009
MOABU	ACTUALS	9534	401	1628	-70,531.00	2,009
MOABU	ACTUALS	9761	401	1628	-6,127.00	2,009
MOABU	ACTUALS	9767	401	1628	-28,261.00	2,009
MOABU	ACTUALS	5202	401	1633	5,552.59	2,009
MOABU	ACTUALS	5401	401	1633	11,804.02	2,009
MOABU	ACTUALS	5404	401	1633	10,096.74	2,009
MOABU	ACTUALS	5502	401	1633	12,250.00	2,009
MOABU	ACTUALS	7999	401	1633	-39,703.35	2,009
MOABU	ACTUALS	9603	401	1633	-39,703.35	2,009
MOABU	ACTUALS	1101	101	5105	421,622.57	2,009
MOABU	ACTUALS	1301	101	5105	35,545.26	2,009
MOABU	ACTUALS	1401	101	5105	233,126.38	2,009
MOABU	ACTUALS	2101	101	5105	1,779.47	2,009
MOABU	ACTUALS	2201	101	5105	56.16	2,009
MOABU	ACTUALS	2208	101	5105	657.83	2,009
MOABU	ACTUALS	2211	101	5105	12,326.30	2,009
MOABU	ACTUALS	2301	101	5105	114.92	2,009
MOABU	ACTUALS	3101	101	5105	128,674.50	2,009
MOABU	ACTUALS	3105	101	5105	33.00	2,009
MOABU	ACTUALS	3111	101	5105	1,069.02	2,009
MOABU	ACTUALS	3201	101	5105	1,680.00	2,009
MOABU	ACTUALS	3202	101	5105	147.00	2,009
MOABU	ACTUALS	3203	101	5105	144.98	2,009
MOABU	ACTUALS	3302	101	5105	1,736.70	2,009
MOABU	ACTUALS	3335	101	5105	2.50	2,009
MOABU	ACTUALS	3601	101	5105	4,126.25	2,009
MOABU	ACTUALS	3701	101	5105	42.00	2,009
MOABU	ACTUALS	3702	101	5105	5,134.60	2,009
MOABU	ACTUALS	3801	101	5105	536.20	2,009
MOABU	ACTUALS	3803	101	5105	1,958.26	2,009
MOABU	ACTUALS	3805	101	5105	379.20	2,009
MOABU	ACTUALS	3808	101	5105	20,928.90	2,009
MOABU	ACTUALS	3814	101	5105	2,072.34	2,009

2009 Expend - ICP Units  
All Expend and Revenues

Unit	Ledger	Acct	Fund	DeptID	Sum Total Amt	Year
MOABU	ACTUALS	3815	101	5105	19,376.65	2,009
MOABU	ACTUALS	3828	101	5105	570.00	2,009
MOABU	ACTUALS	3838	101	5105	42.75	2,009
MOABU	ACTUALS	5411	101	5105	26,373.47	2,009
MOABU	ACTUALS	5604	101	5105	1,087.59	2,009
MOABU	ACTUALS	5609	101	5105	1,752.80	2,009
MOABU	ACTUALS	6022	101	5105	1,013.86	2,009
MOABU	ACTUALS	6023	101	5105	1,563.34	2,009
MOABU	ACTUALS	6026	101	5105	1,357.72	2,009
MOABU	ACTUALS	6029	101	5105	0.85	2,009
MOABU	ACTUALS	6031	101	5105	3,391.09	2,009
MOABU	ACTUALS	6037	101	5105	4,300.55	2,009
MOABU	ACTUALS	6048	101	5105	74,257.56	2,009
MOABU	ACTUALS	6049	101	5105	12,772.50	2,009
MOABU	ACTUALS	6061	101	5105	635.66	2,009
MOABU	ACTUALS	6064	101	5105	1,647.10	2,009
MOABU	ACTUALS	6073	101	5105	42,823.76	2,009
MOABU	ACTUALS	6076	101	5105	0.00	2,009
MOABU	ACTUALS	6079	101	5105	93,563.79	2,009
MOABU	ACTUALS	6080	101	5105	6,321.38	2,009
MOABU	ACTUALS	6081	101	5105	1,148.47	2,009
MOABU	ACTUALS	6085	101	5105	20,454.68	2,009
MOABU	ACTUALS	6088	101	5105	3,457.63	2,009
MOABU	ACTUALS	6089	101	5105	4,985.68	2,009
MOABU	ACTUALS	6091	101	5105	2,317.44	2,009
MOABU	ACTUALS	6094	101	5105	1,636.64	2,009
MOABU	ACTUALS	6095	101	5105	2,828.41	2,009
MOABU	ACTUALS	6103	101	5105	22,605.00	2,009
MOABU	ACTUALS	6104	101	5105	1,226.90	2,009
MOABU	ACTUALS	6105	101	5105	1,292.84	2,009
MOABU	ACTUALS	6110	101	5105	4,585.98	2,009
MOABU	ACTUALS	6145	101	5105	9,701.12	2,009
MOABU	ACTUALS	6147	101	5105	8,385.66	2,009
MOABU	ACTUALS	6181	101	5105	1,266.33	2,009
MOABU	ACTUALS	6198	101	5105	2,704.77	2,009
MOABU	ACTUALS	6500	101	5105	0.00	2,009
MOABU	ACTUALS	6666	101	5105	74,452.21	2,009
MOABU	ACTUALS	6668	101	5105	58,745.56	2,009
MOABU	ACTUALS	6971	101	5105	2,413.68	2,009
MOABU	ACTUALS	6972	101	5105	823.65	2,009
MOABU	ACTUALS	6973	101	5105	3,770.82	2,009
MOABU	ACTUALS	6974	101	5105	35,461.58	2,009
MOABU	ACTUALS	6975	101	5105	11,236.50	2,009
MOABU	ACTUALS	7403	101	5105	-544,636.55	2,009
MOABU	ACTUALS	7411	101	5105	-28,917.13	2,009
MOABU	ACTUALS	9492	101	5105	-124,036.95	2,009
MOABU	ACTUALS	9499	101	5105	-163,214.16	2,009
MOABU	ACTUALS	9557	101	5105	0.00	2,009
MOABU	ACTUALS	9672	101	5105	-950.01	2,009
MOABU	ACTUALS	9798	101	5105	-22,410.75	2,009
MOABU	ACTUALS	3815	101	5107	1,173,500.00	2,009
MOABU	ACTUALS	6022	101	5107	0.00	2,009

2009 Expend - ICP Units  
All Expend and Revenues

Unit	Ledger	Acct	Fund	DeptID	Sum Total Amt	Year
MOABU	ACTUALS	6026	101	5107	1,037.47	2,009
MOABU	ACTUALS	6031	101	5107	2,591.30	2,009
MOABU	ACTUALS	6037	101	5107	3,527.93	2,009
MOABU	ACTUALS	6081	101	5107	877.62	2,009
MOABU	ACTUALS	6091	101	5107	1,901.10	2,009
MOABU	ACTUALS	6105	101	5107	64.00	2,009
MOABU	ACTUALS	6110	101	5107	79.98	2,009
MOABU	ACTUALS	6971	101	5107	1,980.06	2,009
MOABU	ACTUALS	6973	101	5107	3,093.35	2,009
MOABU	ACTUALS	3101	101	5108	2,013,771.52	2,009
MOABU	ACTUALS	3901	101	5108	500,000.00	2,009
MOABU	ACTUALS	6022	101	5108	0.00	2,009
MOABU	ACTUALS	6026	101	5108	2,278.03	2,009
MOABU	ACTUALS	6031	101	5108	5,689.63	2,009
MOABU	ACTUALS	6037	101	5108	6,210.39	2,009
MOABU	ACTUALS	6081	101	5108	1,927.00	2,009
MOABU	ACTUALS	6091	101	5108	3,346.57	2,009
MOABU	ACTUALS	6105	101	5108	121.59	2,009
MOABU	ACTUALS	6110	101	5108	416.61	2,009
MOABU	ACTUALS	6971	101	5108	3,485.55	2,009
MOABU	ACTUALS	6973	101	5108	5,445.40	2,009
MOABU	ACTUALS	9672	101	5108	-96,280.00	2,009
MOABU	ACTUALS	3601	101	5109	0.00	2,009
MOABU	ACTUALS	3815	101	5109	510,300.54	2,009
MOABU	ACTUALS	6022	101	5109	0.00	2,009
MOABU	ACTUALS	6026	101	5109	474.18	2,009
MOABU	ACTUALS	6031	101	5109	1,184.38	2,009
MOABU	ACTUALS	6037	101	5109	1,796.53	2,009
MOABU	ACTUALS	6081	101	5109	401.14	2,009
MOABU	ACTUALS	6091	101	5109	968.13	2,009
MOABU	ACTUALS	6105	101	5109	435.22	2,009
MOABU	ACTUALS	6110	101	5109	1,116.50	2,009
MOABU	ACTUALS	6971	101	5109	1,008.32	2,009
MOABU	ACTUALS	6973	101	5109	1,575.25	2,009
MOABU	ACTUALS	6110	101	5112	9,885.14	2,009
MOABU	ACTUALS	6500	101	5112	6,392.38	2,009
MOABU	ACTUALS	6668	101	5112	250,202.40	2,009
MOABU	ACTUALS	6975	101	5112	116,185.57	2,009
MOABU	ACTUALS	6110	101	5113	696.59	2,009
MOABU	ACTUALS	6342	101	5113	375.00	2,009
MOABU	ACTUALS	6500	101	5113	26,848.30	2,009
MOABU	ACTUALS	6668	101	5113	169,281.06	2,009
MOABU	ACTUALS	6975	101	5113	78,608.45	2,009
MOABU	ACTUALS	6080	161	5114	125.13	2,009
MOABU	ACTUALS	6103	161	5114	16,953.74	2,009
MOABU	ACTUALS	6110	161	5114	743.20	2,009
MOABU	ACTUALS	8500	161	5114	23,012.76	2,009
MOABU	ACTUALS	6668	161	5114	169,688.75	2,009
MOABU	ACTUALS	6975	161	5114	78,797.72	2,009
MOABU	ACTUALS	3101	162	5115	94,200.00	2,009
MOABU	ACTUALS	6022	162	5115	0.00	2,009
MOABU	ACTUALS	6026	162	5115	45.14	2,009

2009 Expend - ICP Units  
All Expend and Revenues

Unit	Ledger	Acct	Fund	DeptID	Sum Total Amt	Year
MOABU	ACTUALS	6031	162	5115	112.77	2,009
MOABU	ACTUALS	6037	162	5115	153.58	2,009
MOABU	ACTUALS	6080	162	5115	60.77	2,009
MOABU	ACTUALS	6081	162	5115	38.21	2,009
MOABU	ACTUALS	6091	162	5115	82.76	2,009
MOABU	ACTUALS	6095	162	5115	47.45	2,009
MOABU	ACTUALS	6110	162	5115	706.54	2,009
MOABU	ACTUALS	6500	162	5115	3,835.47	2,009
MOABU	ACTUALS	6668	162	5115	3,128.99	2,009
MOABU	ACTUALS	6971	162	5115	86.20	2,009
MOABU	ACTUALS	6973	162	5115	134.67	2,009
MOABU	ACTUALS	6975	162	5115	1,453.03	2,009
MOABU	ACTUALS	6080	101	5116	489.76	2,009
MOABU	ACTUALS	6095	101	5116	142.36	2,009
MOABU	ACTUALS	6110	101	5116	1,299.80	2,009
MOABU	ACTUALS	6342	101	5116	2,042.00	2,009
MOABU	ACTUALS	6462	101	5116	372,746.00	2,009
MOABU	ACTUALS	6500	101	5116	20,455.81	2,009
MOABU	ACTUALS	6668	101	5116	214,879.73	2,009
MOABU	ACTUALS	6975	101	5116	99,782.89	2,009
MOABU	ACTUALS	9735	101	5116	-238,752.05	2,009
MOABU	ACTUALS	6110	101	5117	259.95	2,009
MOABU	ACTUALS	6500	101	5117	10,227.98	2,009
MOABU	ACTUALS	6668	101	5117	12,742.65	2,009
MOABU	ACTUALS	6975	101	5117	5,917.28	2,009
MOABU	ACTUALS	9442	101	5117	-83,145.63	2,009
MOABU	ACTUALS	1101	101	5118	61,388.07	2,009
MOABU	ACTUALS	1301	101	5118	4,111.59	2,009
MOABU	ACTUALS	1401	101	5118	28,604.65	2,009
MOABU	ACTUALS	3101	101	5118	8,950.50	2,009
MOABU	ACTUALS	3201	101	5118	78.92	2,009
MOABU	ACTUALS	3338	101	5118	0.00	2,009
MOABU	ACTUALS	3803	101	5118	7.00	2,009
MOABU	ACTUALS	3805	101	5118	2,530.00	2,009
MOABU	ACTUALS	3815	101	5118	6,000.00	2,009
MOABU	ACTUALS	3828	101	5118	450.00	2,009
MOABU	ACTUALS	6022	101	5118	0.00	2,009
MOABU	ACTUALS	6026	101	5118	292.82	2,009
MOABU	ACTUALS	6031	101	5118	731.31	2,009
MOABU	ACTUALS	6037	101	5118	867.97	2,009
MOABU	ACTUALS	6048	101	5118	201.80	2,009
MOABU	ACTUALS	6061	101	5118	272.36	2,009
MOABU	ACTUALS	6064	101	5118	705.91	2,009
MOABU	ACTUALS	6081	101	5118	247.69	2,009
MOABU	ACTUALS	6085	101	5118	2,520.43	2,009
MOABU	ACTUALS	6088	101	5118	1,481.82	2,009
MOABU	ACTUALS	6089	101	5118	2,136.70	2,009
MOABU	ACTUALS	6091	101	5118	467.70	2,009
MOABU	ACTUALS	6094	101	5118	701.41	2,009
MOABU	ACTUALS	6104	101	5118	450.10	2,009
MOABU	ACTUALS	6105	101	5118	236.82	2,009
MOABU	ACTUALS	6145	101	5118	890.60	2,009

2009 Expend - ICP Units  
All Expend and Revenues

Unit	Ledger	Acct	Fund	DeptID	Sum Total Amt	Year
MOABU	ACTUALS	6147	101	5118	905.29	2,009
MOABU	ACTUALS	6181	101	5118	542.68	2,009
MOABU	ACTUALS	6198	101	5118	1,159.19	2,009
MOABU	ACTUALS	6971	101	5118	487.14	2,009
MOABU	ACTUALS	6972	101	5118	352.98	2,009
MOABU	ACTUALS	6973	101	5118	761.05	2,009
MOABU	ACTUALS	1101	162	5119	11,689.53	2,009
MOABU	ACTUALS	1201	162	5119	187.05	2,009
MOABU	ACTUALS	1301	162	5119	424.34	2,009
MOABU	ACTUALS	1401	162	5119	1,615.36	2,009
MOABU	ACTUALS	1501	162	5119	198.87	2,009
MOABU	ACTUALS	2101	162	5119	43.92	2,009
MOABU	ACTUALS	2201	162	5119	998.43	2,009
MOABU	ACTUALS	2301	162	5119	380.64	2,009
MOABU	ACTUALS	3101	162	5119	8.00	2,009
MOABU	ACTUALS	3105	162	5119	207.75	2,009
MOABU	ACTUALS	3201	162	5119	774.90	2,009
MOABU	ACTUALS	3501	162	5119	9,672.37	2,009
MOABU	ACTUALS	6026	162	5119	24.68	2,009
MOABU	ACTUALS	6031	162	5119	61.54	2,009
MOABU	ACTUALS	6048	162	5119	134.54	2,009
MOABU	ACTUALS	6061	162	5119	181.59	2,009
MOABU	ACTUALS	6064	162	5119	470.61	2,009
MOABU	ACTUALS	6081	162	5119	20.84	2,009
MOABU	ACTUALS	6088	162	5119	987.90	2,009
MOABU	ACTUALS	6089	162	5119	1,424.48	2,009
MOABU	ACTUALS	6094	162	5119	467.62	2,009
MOABU	ACTUALS	6145	162	5119	268.89	2,009
MOABU	ACTUALS	6147	162	5119	273.19	2,009
MOABU	ACTUALS	6181	162	5119	361.83	2,009
MOABU	ACTUALS	6198	162	5119	772.76	2,009
MOABU	ACTUALS	6972	162	5119	235.34	2,009
MOABU	ACTUALS	9442	162	5119	-4,650.50	2,009
MOABU	ACTUALS	9798	162	5119	-1,710.00	2,009
MOABU	ACTUALS	4101	301	5120	105,000.00	2,009
MOABU	ACTUALS	4102	301	5120	232,812.50	2,009
MOABU	ACTUALS	6022	301	5120	0.00	2,009
MOABU	ACTUALS	6026	301	5120	0.00	2,009
MOABU	ACTUALS	6031	301	5120	0.00	2,009
MOABU	ACTUALS	6037	301	5120	0.00	2,009
MOABU	ACTUALS	6081	301	5120	0.00	2,009
MOABU	ACTUALS	6091	301	5120	0.00	2,009
MOABU	ACTUALS	6971	301	5120	0.00	2,009
MOABU	ACTUALS	6973	301	5120	0.00	2,009
MOABU	ACTUALS	9737	301	5120	-395,385.00	2,009
MOABU	ACTUALS	9761	301	5120	-2,282.00	2,009
MOABU	ACTUALS	9767	301	5120	-9,533.00	2,009
MOABU	ACTUALS	4101	161	5121	1,490,809.39	2,009
MOABU	ACTUALS	4102	161	5121	1,089,077.36	2,009
MOABU	ACTUALS	4103	161	5121	826.78	2,009
MOABU	ACTUALS	4112	161	5121	4,999.00	2,009
MOABU	ACTUALS	4113	161	5121	2,466.07	2,009

2009 Expend - ICP Units  
All Expend and Revenues

Unit	Ledger	Acct	Fund	DeptID	Sum Total Amt	Year
MOABU	ACTUALS	6022	161	5121	0.00	2,009
MOABU	ACTUALS	6037	161	5121	7,544.34	2,009
MOABU	ACTUALS	6091	161	5121	4,065.42	2,009
MOABU	ACTUALS	6971	161	5121	4,234.24	2,009
MOABU	ACTUALS	6973	161	5121	6,615.02	2,009
MOABU	ACTUALS	9601	161	5121	-0.38	2,009
MOABU	ACTUALS	9798	161	5121	-2.27	2,009
MOABU	ACTUALS	4101	101	5122	116,125.00	2,009
MOABU	ACTUALS	4102	101	5122	55,523.60	2,009
MOABU	ACTUALS	4103	101	5122	45.03	2,009
MOABU	ACTUALS	6022	101	5122	0.00	2,009
MOABU	ACTUALS	6037	101	5122	332.03	2,009
MOABU	ACTUALS	6091	101	5122	178.93	2,009
MOABU	ACTUALS	6971	101	5122	186.36	2,009
MOABU	ACTUALS	6973	101	5122	291.12	2,009
MOABU	ACTUALS	9601	101	5122	-0.76	2,009
MOABU	ACTUALS	9798	101	5122	-0.57	2,009
MOABU	ACTUALS	3815	101	5123	224,503.81	2,009
MOABU	ACTUALS	6022	101	5123	0.00	2,009
MOABU	ACTUALS	6026	101	5123	213.78	2,009
MOABU	ACTUALS	6031	101	5123	533.98	2,009
MOABU	ACTUALS	6037	101	5123	726.34	2,009
MOABU	ACTUALS	6080	101	5123	228.81	2,009
MOABU	ACTUALS	6081	101	5123	180.84	2,009
MOABU	ACTUALS	6091	101	5123	391.40	2,009
MOABU	ACTUALS	6095	101	5123	332.19	2,009
MOABU	ACTUALS	6105	101	5123	19.18	2,009
MOABU	ACTUALS	6110	101	5123	303.29	2,009
MOABU	ACTUALS	6971	101	5123	407.63	2,009
MOABU	ACTUALS	6973	101	5123	636.87	2,009
MOABU	ACTUALS	3901	740	5142	22,057.00	2,009
MOABU	ACTUALS	7999	740	5142	-22,057.00	2,009
MOABU	ACTUALS	9761	740	5142	-3,499.00	2,009
MOABU	ACTUALS	9767	740	5142	-16,033.00	2,009
MOABU	ACTUALS	9798	740	5142	0.00	2,009
MOABU	ACTUALS	3101	101	5210	4,116,870.28	2,009
MOABU	ACTUALS	3201	101	5210	428.32	2,009
MOABU	ACTUALS	3814	101	5210	325.62	2,009
MOABU	ACTUALS	3815	101	5210	0.00	2,009
MOABU	ACTUALS	6048	101	5210	0.00	2,009
MOABU	ACTUALS	6145	101	5210	0.00	2,009
MOABU	ACTUALS	6147	101	5210	0.00	2,009
MOABU	ACTUALS	9731	101	5210	0.00	2,009
MOABU	ACTUALS	9742	101	5210	0.00	2,009
MOABU	ACTUALS	3838	261	53163G	9,465.01	2,009
MOABU	ACTUALS	3838	261	53167G	2,320.78	2,009
MOABU	ACTUALS	3101	261	5317G	1,500.00	2,009
MOABU	ACTUALS	3838	261	5317G	33,042.01	2,009
MOABU	ACTUALS	3860	261	5317G	111.50	2,009
MOABU	ACTUALS	6022	261	5317G	1.00	2,009
MOABU	ACTUALS	6061	261	5317G	1.00	2,009
MOABU	ACTUALS	6091	261	5317G	14.00	2,009

2009 Expend - ICP Units  
All Expend and Revenues

Unit	Ledger	Acct	Fund	DeptID	Sum Total Amt	Year
MOABU	ACTUALS	6095	261	5317G	75.00	2,009
MOABU	ACTUALS	6103	261	5317G	267.00	2,009
MOABU	ACTUALS	6104	261	5317G	8.00	2,009
MOABU	ACTUALS	6105	261	5317G	35.00	2,009
MOABU	ACTUALS	6109	261	5317G	1.00	2,009
MOABU	ACTUALS	6110	261	5317G	84.00	2,009
MOABU	ACTUALS	9609	261	5317G	-142,292.83	2,009
MOABU	ACTUALS	1101	101	5355	361,781.50	2,009
MOABU	ACTUALS	1201	101	5355	169.01	2,009
MOABU	ACTUALS	1301	101	5355	30,140.37	2,009
MOABU	ACTUALS	1401	101	5355	238,549.92	2,009
MOABU	ACTUALS	1501	101	5355	36.00	2,009
MOABU	ACTUALS	2101	101	5355	348.72	2,009
MOABU	ACTUALS	2201	101	5355	5,680.77	2,009
MOABU	ACTUALS	2208	101	5355	546.11	2,009
MOABU	ACTUALS	2211	101	5355	253.52	2,009
MOABU	ACTUALS	3101	101	5355	2,599.09	2,009
MOABU	ACTUALS	3201	101	5355	1,124.24	2,009
MOABU	ACTUALS	3203	101	5355	599.88	2,009
MOABU	ACTUALS	3302	101	5355	864.73	2,009
MOABU	ACTUALS	3303	101	5355	20.22	2,009
MOABU	ACTUALS	3334	101	5355	1,926.08	2,009
MOABU	ACTUALS	3336	101	5355	0.00	2,009
MOABU	ACTUALS	3338	101	5355	0.00	2,009
MOABU	ACTUALS	3501	101	5355	595.74	2,009
MOABU	ACTUALS	3601	101	5355	3,770.67	2,009
MOABU	ACTUALS	3702	101	5355	3,938.00	2,009
MOABU	ACTUALS	3801	101	5355	1,654.05	2,009
MOABU	ACTUALS	3802	101	5355	1,261.59	2,009
MOABU	ACTUALS	3805	101	5355	7,080.00	2,009
MOABU	ACTUALS	3808	101	5355	3,096.10	2,009
MOABU	ACTUALS	3828	101	5355	0.00	2,009
MOABU	ACTUALS	3838	101	5355	0.00	2,009
MOABU	ACTUALS	5413	101	5355	0.00	2,009
MOABU	ACTUALS	5603	101	5355	3,005.56	2,009
MOABU	ACTUALS	5609	101	5355	0.00	2,009
MOABU	ACTUALS	6022	101	5355	0.00	2,009
MOABU	ACTUALS	6026	101	5355	709.05	2,009
MOABU	ACTUALS	6029	101	5355	0.05	2,009
MOABU	ACTUALS	6031	101	5355	1,770.96	2,009
MOABU	ACTUALS	6037	101	5355	2,121.97	2,009
MOABU	ACTUALS	6048	101	5355	59,170.04	2,009
MOABU	ACTUALS	6049	101	5355	12,772.48	2,009
MOABU	ACTUALS	6061	101	5355	726.42	2,009
MOABU	ACTUALS	6064	101	5355	1,882.42	2,009
MOABU	ACTUALS	6073	101	5355	3,132.70	2,009
MOABU	ACTUALS	6080	101	5355	9,446.12	2,009
MOABU	ACTUALS	6081	101	5355	599.78	2,009
MOABU	ACTUALS	6085	101	5355	45,444.73	2,009
MOABU	ACTUALS	6086	101	5355	570.80	2,009
MOABU	ACTUALS	6088	101	5355	3,951.59	2,009
MOABU	ACTUALS	6089	101	5355	5,697.90	2,009

2009 Expend - ICP Units  
All Expend and Revenues

Unit	Ledger	Acct	Fund	DeptID	Sum Total Amt	Year
MOABU	ACTUALS	6091	101	5355	1,143.46	2,009
MOABU	ACTUALS	6094	101	5355	1,870.45	2,009
MOABU	ACTUALS	6095	101	5355	2,818.92	2,009
MOABU	ACTUALS	6103	101	5355	13,939.78	2,009
MOABU	ACTUALS	6104	101	5355	1,203.56	2,009
MOABU	ACTUALS	6105	101	5355	614.40	2,009
MOABU	ACTUALS	6110	101	5355	7,755.49	2,009
MOABU	ACTUALS	6145	101	5355	8,522.56	2,009
MOABU	ACTUALS	6147	101	5355	7,197.07	2,009
MOABU	ACTUALS	6181	101	5355	1,447.23	2,009
MOABU	ACTUALS	6198	101	5355	3,091.19	2,009
MOABU	ACTUALS	6500	101	5355	99,722.19	2,009
MOABU	ACTUALS	6562	101	5355	102,543.35	2,009
MOABU	ACTUALS	6666	101	5355	251,250.28	2,009
MOABU	ACTUALS	6668	101	5355	1,182,076.38	2,009
MOABU	ACTUALS	6774	101	5355	3,136.55	2,009
MOABU	ACTUALS	6971	101	5355	1,190.98	2,009
MOABU	ACTUALS	6972	101	5355	941.30	2,009
MOABU	ACTUALS	6973	101	5355	1,860.58	2,009
MOABU	ACTUALS	6974	101	5355	2,594.13	2,009
MOABU	ACTUALS	6975	101	5355	85,000.67	2,009
MOABU	ACTUALS	9494	101	5355	-1.00	2,009
MOABU	ACTUALS	9672	101	5355	-30.00	2,009
MOABU	ACTUALS	9733	101	5355	-91,194.55	2,009
MOABU	ACTUALS	9785	101	5355	-48,807.00	2,009
MOABU	ACTUALS	1101	101	5364	877,422.50	2,009
MOABU	ACTUALS	1201	101	5364	80.61	2,009
MOABU	ACTUALS	1301	101	5364	120,736.62	2,009
MOABU	ACTUALS	1401	101	5364	608,365.78	2,009
MOABU	ACTUALS	1501	101	5364	617.05	2,009
MOABU	ACTUALS	2101	101	5364	3,027.80	2,009
MOABU	ACTUALS	2201	101	5364	3,190.62	2,009
MOABU	ACTUALS	3201	101	5364	2,314.16	2,009
MOABU	ACTUALS	3302	101	5364	1,884.81	2,009
MOABU	ACTUALS	3304	101	5364	0.00	2,009
MOABU	ACTUALS	3501	101	5364	202.99	2,009
MOABU	ACTUALS	3601	101	5364	5,769.17	2,009
MOABU	ACTUALS	3702	101	5364	358.00	2,009
MOABU	ACTUALS	3808	101	5364	49,712.09	2,009
MOABU	ACTUALS	3822	101	5364	2,011.15	2,009
MOABU	ACTUALS	3825	101	5364	0.00	2,009
MOABU	ACTUALS	3838	101	5364	0.00	2,009
MOABU	ACTUALS	3901	101	5364	33,911.48	2,009
MOABU	ACTUALS	5401	101	5364	1,130.00	2,009
MOABU	ACTUALS	6022	101	5364	0.00	2,009
MOABU	ACTUALS	6026	101	5364	1,719.31	2,009
MOABU	ACTUALS	6029	101	5364	0.07	2,009
MOABU	ACTUALS	6031	101	5364	4,294.24	2,009
MOABU	ACTUALS	6037	101	5364	5,267.96	2,009
MOABU	ACTUALS	6048	101	5364	1,883.54	2,009
MOABU	ACTUALS	6061	101	5364	2,542.48	2,009
MOABU	ACTUALS	6064	101	5364	6,588.43	2,009

2009 Expend - ICP Units  
All Expend and Revenues

Unit	Ledger	Acct	Fund	DeptID	Sum Total Amt	Year
MOABU	ACTUALS	6080	101	5364	10,506.66	2,009
MOABU	ACTUALS	6081	101	5364	1,454.41	2,009
MOABU	ACTUALS	6085	101	5364	546.75	2,009
MOABU	ACTUALS	6088	101	5364	13,830.50	2,009
MOABU	ACTUALS	6089	101	5364	19,942.69	2,009
MOABU	ACTUALS	6091	101	5364	2,838.75	2,009
MOABU	ACTUALS	6094	101	5364	6,546.53	2,009
MOABU	ACTUALS	6095	101	5364	6,653.38	2,009
MOABU	ACTUALS	6104	101	5364	4,544.19	2,009
MOABU	ACTUALS	6105	101	5364	1,004.82	2,009
MOABU	ACTUALS	6109	101	5364	24,676.41	2,009
MOABU	ACTUALS	6110	101	5364	9,085.32	2,009
MOABU	ACTUALS	6145	101	5364	21,495.33	2,009
MOABU	ACTUALS	6147	101	5364	18,619.63	2,009
MOABU	ACTUALS	6181	101	5364	5,065.25	2,009
MOABU	ACTUALS	6198	101	5364	10,819.11	2,009
MOABU	ACTUALS	6666	101	5364	82,232.94	2,009
MOABU	ACTUALS	6668	101	5364	498,809.79	2,009
MOABU	ACTUALS	6971	101	5364	2,956.63	2,009
MOABU	ACTUALS	6972	101	5364	3,294.59	2,009
MOABU	ACTUALS	6973	101	5364	4,619.09	2,009
MOABU	ACTUALS	6975	101	5364	43,523.80	2,009
MOABU	ACTUALS	9213	101	5364	-64,487.51	2,009
MOABU	ACTUALS	9445	101	5364	-60.00	2,009
MOABU	ACTUALS	9494	101	5364	-5,162.22	2,009
MOABU	ACTUALS	9672	101	5364	-2,113.44	2,009
MOABU	ACTUALS	9742	101	5364	-787.47	2,009
MOABU	ACTUALS	9782	101	5364	-6,220.39	2,009
MOABU	ACTUALS	9791	101	5364	-18.96	2,009
MOABU	ACTUALS	1101	101	5371	825,458.33	2,009
MOABU	ACTUALS	1201	101	5371	720.21	2,009
MOABU	ACTUALS	1301	101	5371	106,234.09	2,009
MOABU	ACTUALS	1401	101	5371	502,319.99	2,009
MOABU	ACTUALS	1501	101	5371	348.72	2,009
MOABU	ACTUALS	2101	101	5371	4,095.25	2,009
MOABU	ACTUALS	2201	101	5371	2,403.45	2,009
MOABU	ACTUALS	3105	101	5371	79.25	2,009
MOABU	ACTUALS	3201	101	5371	65.92	2,009
MOABU	ACTUALS	3302	101	5371	22.70	2,009
MOABU	ACTUALS	3334	101	5371	30.00	2,009
MOABU	ACTUALS	3337	101	5371	333.91	2,009
MOABU	ACTUALS	3601	101	5371	7,550.56	2,009
MOABU	ACTUALS	3802	101	5371	421.65	2,009
MOABU	ACTUALS	5401	101	5371	0.00	2,009
MOABU	ACTUALS	5609	101	5371	3,812.00	2,009
MOABU	ACTUALS	6022	101	5371	0.00	2,009
MOABU	ACTUALS	6026	101	5371	1,460.54	2,009
MOABU	ACTUALS	6029	101	5371	0.07	2,009
MOABU	ACTUALS	6031	101	5371	3,647.87	2,009
MOABU	ACTUALS	6037	101	5371	4,487.20	2,009
MOABU	ACTUALS	6048	101	5371	1,412.67	2,009
MOABU	ACTUALS	6061	101	5371	1,906.85	2,009

2009 Expend - ICP Units  
All Expend and Revenues

Unit	Ledger	Acct	Fund	DeptID	Sum Total Amt	Year
MOABU	ACTUALS	6064	101	5371	4,941.30	2,009
MOABU	ACTUALS	6080	101	5371	8,944.69	2,009
MOABU	ACTUALS	6081	101	5371	1,235.47	2,009
MOABU	ACTUALS	6085	101	5371	3,914.46	2,009
MOABU	ACTUALS	6088	101	5371	10,372.90	2,009
MOABU	ACTUALS	6089	101	5371	14,957.00	2,009
MOABU	ACTUALS	6091	101	5371	2,418.01	2,009
MOABU	ACTUALS	6094	101	5371	4,909.90	2,009
MOABU	ACTUALS	6095	101	5371	2,809.43	2,009
MOABU	ACTUALS	6104	101	5371	3,690.71	2,009
MOABU	ACTUALS	6105	101	5371	601.64	2,009
MOABU	ACTUALS	6110	101	5371	4,086.04	2,009
MOABU	ACTUALS	6145	101	5371	20,050.90	2,009
MOABU	ACTUALS	6147	101	5371	17,137.68	2,009
MOABU	ACTUALS	6181	101	5371	3,798.98	2,009
MOABU	ACTUALS	6198	101	5371	8,114.34	2,009
MOABU	ACTUALS	6971	101	5371	2,518.43	2,009
MOABU	ACTUALS	6972	101	5371	2,470.95	2,009
MOABU	ACTUALS	6973	101	5371	3,934.47	2,009
MOABU	ACTUALS	9448	101	5371	-2,661.00	2,009
MOABU	ACTUALS	9494	101	5371	-18,040.10	2,009
MOABU	ACTUALS	9672	101	5371	-20.95	2,009
MOABU	ACTUALS	1101	101	5372	596,319.48	2,009
MOABU	ACTUALS	1201	101	5372	403.98	2,009
MOABU	ACTUALS	1301	101	5372	64,543.14	2,009
MOABU	ACTUALS	1401	101	5372	473,963.80	2,009
MOABU	ACTUALS	1501	101	5372	585.43	2,009
MOABU	ACTUALS	2101	101	5372	1,189.78	2,009
MOABU	ACTUALS	2201	101	5372	8,215.54	2,009
MOABU	ACTUALS	2202	101	5372	21.40	2,009
MOABU	ACTUALS	3101	101	5372	125.00	2,009
MOABU	ACTUALS	3201	101	5372	11.11	2,009
MOABU	ACTUALS	3202	101	5372	500.00	2,009
MOABU	ACTUALS	3302	101	5372	4.15	2,009
MOABU	ACTUALS	3303	101	5372	250.00	2,009
MOABU	ACTUALS	3712	101	5372	375.00	2,009
MOABU	ACTUALS	3808	101	5372	4,084.70	2,009
MOABU	ACTUALS	3814	101	5372	141.90	2,009
MOABU	ACTUALS	3822	101	5372	3,430.44	2,009
MOABU	ACTUALS	3828	101	5372	0.00	2,009
MOABU	ACTUALS	3838	101	5372	1,423.95	2,009
MOABU	ACTUALS	5401	101	5372	1,563.98	2,009
MOABU	ACTUALS	6022	101	5372	0.00	2,009
MOABU	ACTUALS	6026	101	5372	1,130.45	2,009
MOABU	ACTUALS	6029	101	5372	0.08	2,009
MOABU	ACTUALS	6031	101	5372	2,823.47	2,009
MOABU	ACTUALS	6037	101	5372	3,528.13	2,009
MOABU	ACTUALS	6048	101	5372	1,749.01	2,009
MOABU	ACTUALS	6061	101	5372	2,360.86	2,009
MOABU	ACTUALS	6064	101	5372	6,117.86	2,009
MOABU	ACTUALS	6080	101	5372	15,014.63	2,009
MOABU	ACTUALS	6081	101	5372	956.28	2,009

2009 Expend - ICP Units  
All Expend and Revenues

Unit	Ledger	Acct	Fund	DeptID	Sum Total Amt	Year
MOABU	ACTUALS	6085	101	5372	8,550.06	2,009
MOABU	ACTUALS	6088	101	5372	12,842.62	2,009
MOABU	ACTUALS	6089	101	5372	18,518.21	2,009
MOABU	ACTUALS	6091	101	5372	1,901.19	2,009
MOABU	ACTUALS	6094	101	5372	6,078.91	2,009
MOABU	ACTUALS	6095	101	5372	3,692.10	2,009
MOABU	ACTUALS	6104	101	5372	4,427.49	2,009
MOABU	ACTUALS	6105	101	5372	1,433.63	2,009
MOABU	ACTUALS	6109	101	5372	14,220.32	2,009
MOABU	ACTUALS	6110	101	5372	8,558.69	2,009
MOABU	ACTUALS	6145	101	5372	14,364.67	2,009
MOABU	ACTUALS	6147	101	5372	12,349.93	2,009
MOABU	ACTUALS	6181	101	5372	4,703.44	2,009
MOABU	ACTUALS	6198	101	5372	10,046.33	2,009
MOABU	ACTUALS	6971	101	5372	1,980.16	2,009
MOABU	ACTUALS	6972	101	5372	3,059.24	2,009
MOABU	ACTUALS	6973	101	5372	3,093.53	2,009
MOABU	ACTUALS	9213	101	5372	-120,953.76	2,009
MOABU	ACTUALS	9445	101	5372	-1,720.00	2,009
MOABU	ACTUALS	9782	101	5372	-41,633.25	2,009
MOABU	ACTUALS	9791	101	5372	10.00	2,009
MOABU	ACTUALS	1101	101	5373	328,039.14	2,009
MOABU	ACTUALS	1201	101	5373	406.89	2,009
MOABU	ACTUALS	1301	101	5373	42,734.97	2,009
MOABU	ACTUALS	1401	101	5373	205,654.91	2,009
MOABU	ACTUALS	1501	101	5373	404.90	2,009
MOABU	ACTUALS	2101	101	5373	813.99	2,009
MOABU	ACTUALS	2201	101	5373	616.15	2,009
MOABU	ACTUALS	3101	101	5373	0.00	2,009
MOABU	ACTUALS	3201	101	5373	44.72	2,009
MOABU	ACTUALS	3202	101	5373	63.02	2,009
MOABU	ACTUALS	3302	101	5373	116.85	2,009
MOABU	ACTUALS	3303	101	5373	350.54	2,009
MOABU	ACTUALS	3335	101	5373	2.00	2,009
MOABU	ACTUALS	3601	101	5373	3,031.97	2,009
MOABU	ACTUALS	3701	101	5373	303.00	2,009
MOABU	ACTUALS	3802	101	5373	904.50	2,009
MOABU	ACTUALS	3808	101	5373	427.13	2,009
MOABU	ACTUALS	3828	101	5373	200.00	2,009
MOABU	ACTUALS	3838	101	5373	11.00	2,009
MOABU	ACTUALS	5411	101	5373	587.39	2,009
MOABU	ACTUALS	5603	101	5373	643.53	2,009
MOABU	ACTUALS	5609	101	5373	594.42	2,009
MOABU	ACTUALS	6022	101	5373	0.00	2,009
MOABU	ACTUALS	6026	101	5373	602.31	2,009
MOABU	ACTUALS	6029	101	5373	0.01	2,009
MOABU	ACTUALS	6031	101	5373	1,504.34	2,009
MOABU	ACTUALS	6037	101	5373	1,728.66	2,009
MOABU	ACTUALS	6048	101	5373	605.44	2,009
MOABU	ACTUALS	6061	101	5373	817.22	2,009
MOABU	ACTUALS	6064	101	5373	2,117.68	2,009
MOABU	ACTUALS	6080	101	5373	3,306.81	2,009

2009 Expend - ICP Units  
All Expend and Revenues

Unit	Ledger	Acct	Fund	DeptID	Sum Total Amt	Year
MOABU	ACTUALS	6081	101	5373	509.48	2,009
MOABU	ACTUALS	6085	101	5373	22,075.15	2,009
MOABU	ACTUALS	6088	101	5373	4,445.50	2,009
MOABU	ACTUALS	6089	101	5373	6,410.15	2,009
MOABU	ACTUALS	6091	101	5373	931.55	2,009
MOABU	ACTUALS	6094	101	5373	2,104.26	2,009
MOABU	ACTUALS	6095	101	5373	2,391.80	2,009
MOABU	ACTUALS	6104	101	5373	1,570.32	2,009
MOABU	ACTUALS	6105	101	5373	102.39	2,009
MOABU	ACTUALS	6110	101	5373	1,716.42	2,009
MOABU	ACTUALS	6145	101	5373	8,071.74	2,009
MOABU	ACTUALS	6147	101	5373	6,860.12	2,009
MOABU	ACTUALS	6181	101	5373	1,628.11	2,009
MOABU	ACTUALS	6198	101	5373	3,477.56	2,009
MOABU	ACTUALS	6971	101	5373	970.21	2,009
MOABU	ACTUALS	6972	101	5373	1,058.99	2,009
MOABU	ACTUALS	6973	101	5373	1,515.75	2,009
MOABU	ACTUALS	1101	101	5381	238,917.68	2,009
MOABU	ACTUALS	1301	101	5381	27,672.47	2,009
MOABU	ACTUALS	1401	101	5381	173,922.99	2,009
MOABU	ACTUALS	2101	101	5381	664.99	2,009
MOABU	ACTUALS	2201	101	5381	14,838.36	2,009
MOABU	ACTUALS	3201	101	5381	48.46	2,009
MOABU	ACTUALS	3202	101	5381	9.35	2,009
MOABU	ACTUALS	3302	101	5381	29.84	2,009
MOABU	ACTUALS	3601	101	5381	873.00	2,009
MOABU	ACTUALS	3803	101	5381	217.01	2,009
MOABU	ACTUALS	3808	101	5381	53,690.46	2,009
MOABU	ACTUALS	3838	101	5381	92,107.50	2,009
MOABU	ACTUALS	6022	101	5381	0.00	2,009
MOABU	ACTUALS	6026	101	5381	1,667.83	2,009
MOABU	ACTUALS	6029	101	5381	0.02	2,009
MOABU	ACTUALS	6031	101	5381	4,165.65	2,009
MOABU	ACTUALS	6037	101	5381	5,600.51	2,009
MOABU	ACTUALS	6048	101	5381	403.60	2,009
MOABU	ACTUALS	6061	101	5381	544.84	2,009
MOABU	ACTUALS	6064	101	5381	1,411.80	2,009
MOABU	ACTUALS	6080	101	5381	9,130.33	2,009
MOABU	ACTUALS	6081	101	5381	1,410.82	2,009
MOABU	ACTUALS	6085	101	5381	92.60	2,009
MOABU	ACTUALS	6088	101	5381	2,963.69	2,009
MOABU	ACTUALS	6089	101	5381	4,273.42	2,009
MOABU	ACTUALS	6091	101	5381	3,017.92	2,009
MOABU	ACTUALS	6094	101	5381	1,402.84	2,009
MOABU	ACTUALS	6095	101	5381	24,791.24	2,009
MOABU	ACTUALS	6104	101	5381	1,616.97	2,009
MOABU	ACTUALS	6105	101	5381	10,899.39	2,009
MOABU	ACTUALS	6110	101	5381	13,434.65	2,009
MOABU	ACTUALS	6145	101	5381	5,815.84	2,009
MOABU	ACTUALS	6147	101	5381	4,891.29	2,009
MOABU	ACTUALS	6181	101	5381	1,085.42	2,009
MOABU	ACTUALS	6198	101	5381	2,318.38	2,009

2009 Expend - ICP Units  
All Expend and Revenues

Unit	Ledger	Acct	Fund	DeptID	Sum Total Amt	Year
MOABU	ACTUALS	6971	101	5381	3,143.30	2,009
MOABU	ACTUALS	6972	101	5381	705.99	2,009
MOABU	ACTUALS	6973	101	5381	4,910.60	2,009
MOABU	ACTUALS	1101	101	5382	60,972.96	2,009
MOABU	ACTUALS	1201	101	5382	379.02	2,009
MOABU	ACTUALS	1301	101	5382	9,397.96	2,009
MOABU	ACTUALS	1401	101	5382	35,916.02	2,009
MOABU	ACTUALS	1501	101	5382	41.22	2,009
MOABU	ACTUALS	2211	101	5382	17,161.61	2,009
MOABU	ACTUALS	2301	101	5382	316.50	2,009
MOABU	ACTUALS	3101	101	5382	23,203.16	2,009
MOABU	ACTUALS	3201	101	5382	20,898.42	2,009
MOABU	ACTUALS	3203	101	5382	144.98	2,009
MOABU	ACTUALS	3601	101	5382	13,049.04	2,009
MOABU	ACTUALS	3611	101	5382	3,138.04	2,009
MOABU	ACTUALS	3612	101	5382	72,911.56	2,009
MOABU	ACTUALS	3712	101	5382	6,955.93	2,009
MOABU	ACTUALS	3713	101	5382	300.00	2,009
MOABU	ACTUALS	3802	101	5382	1,731.35	2,009
MOABU	ACTUALS	3808	101	5382	8,296.00	2,009
MOABU	ACTUALS	3838	101	5382	2,206.75	2,009
MOABU	ACTUALS	5411	101	5382	30,202.46	2,009
MOABU	ACTUALS	5412	101	5382	1,761.15	2,009
MOABU	ACTUALS	5603	101	5382	1,265.99	2,009
MOABU	ACTUALS	5604	101	5382	25,419.48	2,009
MOABU	ACTUALS	5605	101	5382	1,603.44	2,009
MOABU	ACTUALS	6022	101	5382	0.00	2,009
MOABU	ACTUALS	6026	101	5382	309.40	2,009
MOABU	ACTUALS	6029	101	5382	0.96	2,009
MOABU	ACTUALS	6031	101	5382	772.77	2,009
MOABU	ACTUALS	6037	101	5382	652.88	2,009
MOABU	ACTUALS	6048	101	5382	67.26	2,009
MOABU	ACTUALS	6061	101	5382	90.78	2,009
MOABU	ACTUALS	6064	101	5382	235.32	2,009
MOABU	ACTUALS	6080	101	5382	1,934.03	2,009
MOABU	ACTUALS	6081	101	5382	261.74	2,009
MOABU	ACTUALS	6088	101	5382	493.95	2,009
MOABU	ACTUALS	6089	101	5382	712.25	2,009
MOABU	ACTUALS	6091	101	5382	351.85	2,009
MOABU	ACTUALS	6094	101	5382	233.81	2,009
MOABU	ACTUALS	6095	101	5382	3,350.43	2,009
MOABU	ACTUALS	6104	101	5382	243.38	2,009
MOABU	ACTUALS	6105	101	5382	294.39	2,009
MOABU	ACTUALS	6110	101	5382	3,176.18	2,009
MOABU	ACTUALS	6145	101	5382	1,532.92	2,009
MOABU	ACTUALS	6147	101	5382	1,285.12	2,009
MOABU	ACTUALS	6181	101	5382	180.92	2,009
MOABU	ACTUALS	6198	101	5382	386.40	2,009
MOABU	ACTUALS	6971	101	5382	366.42	2,009
MOABU	ACTUALS	6972	101	5382	117.65	2,009
MOABU	ACTUALS	6973	101	5382	572.49	2,009
MOABU	ACTUALS	9672	101	5382	-723.24	2,009

2009 Expend - ICP Units  
All Expend and Revenues

Unit	Ledger	Acct	Fund	DeptID	Sum Total Amt	Year
MOABU	ACTUALS	9798	101	5382	-22,441.00	2,009
MOABU	ACTUALS	1101	101	5383	162,828.03	2,009
MOABU	ACTUALS	1301	101	5383	11,744.10	2,009
MOABU	ACTUALS	1401	101	5383	113,777.49	2,009
MOABU	ACTUALS	2101	101	5383	100.00	2,009
MOABU	ACTUALS	2201	101	5383	2,674.66	2,009
MOABU	ACTUALS	3302	101	5383	33.76	2,009
MOABU	ACTUALS	3808	101	5383	12,358.50	2,009
MOABU	ACTUALS	3838	101	5383	805,556.83	2,009
MOABU	ACTUALS	3901	101	5383	35,000.00	2,009
MOABU	ACTUALS	6048	101	5383	269.10	2,009
MOABU	ACTUALS	6061	101	5383	363.24	2,009
MOABU	ACTUALS	6064	101	5383	941.20	2,009
MOABU	ACTUALS	6088	101	5383	1,975.77	2,009
MOABU	ACTUALS	6089	101	5383	2,848.95	2,009
MOABU	ACTUALS	6094	101	5383	935.21	2,009
MOABU	ACTUALS	6145	101	5383	3,842.15	2,009
MOABU	ACTUALS	6147	101	5383	3,209.09	2,009
MOABU	ACTUALS	6181	101	5383	723.62	2,009
MOABU	ACTUALS	6198	101	5383	1,545.58	2,009
MOABU	ACTUALS	6972	101	5383	470.65	2,009
MOABU	ACTUALS	2201	231	53918G	861.96	2,009
MOABU	ACTUALS	3101	231	53918G	387.89	2,009
MOABU	ACTUALS	3332	231	53918G	13.98	2,009
MOABU	ACTUALS	3334	231	53918G	5,224.70	2,009
MOABU	ACTUALS	3335	231	53918G	99.75	2,009
MOABU	ACTUALS	3336	231	53918G	2,054.06	2,009
MOABU	ACTUALS	3337	231	53918G	1,418.09	2,009
MOABU	ACTUALS	3338	231	53918G	4,295.00	2,009
MOABU	ACTUALS	3339	231	53918G	-53.30	2,009
MOABU	ACTUALS	3828	231	53918G	1,698.00	2,009
MOABU	ACTUALS	3838	231	53918G	38,673.08	2,009
MOABU	ACTUALS	5411	231	53918G	9,967.00	2,009
MOABU	ACTUALS	5609	231	53918G	481.19	2,009
MOABU	ACTUALS	9825	231	53918G	-30,706.40	2,009
MOABU	ACTUALS	3334	231	53919G	0.00	2,009
MOABU	ACTUALS	3335	231	53919G	15.00	2,009
MOABU	ACTUALS	3336	231	53919G	2,941.04	2,009
MOABU	ACTUALS	3338	231	53919G	0.00	2,009
MOABU	ACTUALS	3828	231	53919G	119.00	2,009
MOABU	ACTUALS	6022	231	53919G	8.00	2,009
MOABU	ACTUALS	6061	231	53919G	8.00	2,009
MOABU	ACTUALS	6091	231	53919G	58.00	2,009
MOABU	ACTUALS	6095	231	53919G	182.00	2,009
MOABU	ACTUALS	6103	231	53919G	626.00	2,009
MOABU	ACTUALS	6105	231	53919G	92.00	2,009
MOABU	ACTUALS	6109	231	53919G	4.00	2,009
MOABU	ACTUALS	6110	231	53919G	192.00	2,009
MOABU	ACTUALS	9601	231	53919G	-35,000.00	2,009
MOABU	ACTUALS	9825	231	53919G	-3,075.04	2,009
MOABU	ACTUALS	1101	231	53938G	14,080.57	2,009
MOABU	ACTUALS	1301	231	53938G	1,860.70	2,009

2009 Expend - ICP Units  
All Expend and Revenues

Unit	Ledger	Acct	Fund	DeptID	Sum Total Amt	Year
MOABU	ACTUALS	1401	231	53938G	12,872.35	2,009
MOABU	ACTUALS	2201	231	53938G	1,340.21	2,009
MOABU	ACTUALS	3601	231	53938G	454.80	2,009
MOABU	ACTUALS	6145	231	53938G	300.67	2,009
MOABU	ACTUALS	6147	231	53938G	340.87	2,009
MOABU	ACTUALS	9398	231	53938G	-31,250.17	2,009
MOABU	ACTUALS	1101	231	53939G	12,893.64	2,009
MOABU	ACTUALS	1301	231	53939G	1,613.00	2,009
MOABU	ACTUALS	1401	231	53939G	9,419.02	2,009
MOABU	ACTUALS	6022	231	53939G	22.00	2,009
MOABU	ACTUALS	6061	231	53939G	24.00	2,009
MOABU	ACTUALS	6091	231	53939G	150.00	2,009
MOABU	ACTUALS	6095	231	53939G	484.00	2,009
MOABU	ACTUALS	6103	231	53939G	1,660.00	2,009
MOABU	ACTUALS	6104	231	53939G	248.00	2,009
MOABU	ACTUALS	6105	231	53939G	248.00	2,009
MOABU	ACTUALS	6109	231	53939G	14.00	2,009
MOABU	ACTUALS	6110	231	53939G	504.00	2,009
MOABU	ACTUALS	6145	231	53939G	303.71	2,009
MOABU	ACTUALS	6147	231	53939G	216.42	2,009
MOABU	ACTUALS	6181	231	53939G	376.00	2,009
MOABU	ACTUALS	6198	231	53939G	540.00	2,009
MOABU	ACTUALS	9825	231	53939G	-28,715.79	2,009
MOABU	ACTUALS	9398	231	53947G	0.00	2,009
MOABU	ACTUALS	1101	231	53948G	14,744.46	2,009
MOABU	ACTUALS	1301	231	53948G	1,302.51	2,009
MOABU	ACTUALS	1401	231	53948G	12,475.49	2,009
MOABU	ACTUALS	2101	231	53948G	521.67	2,009
MOABU	ACTUALS	2201	231	53948G	61.12	2,009
MOABU	ACTUALS	3101	231	53948G	600.00	2,009
MOABU	ACTUALS	3302	231	53948G	133.98	2,009
MOABU	ACTUALS	3334	231	53948G	689.00	2,009
MOABU	ACTUALS	3335	231	53948G	50.00	2,009
MOABU	ACTUALS	3336	231	53948G	636.80	2,009
MOABU	ACTUALS	3337	231	53948G	408.00	2,009
MOABU	ACTUALS	3338	231	53948G	740.70	2,009
MOABU	ACTUALS	3339	231	53948G	36.00	2,009
MOABU	ACTUALS	3802	231	53948G	175.00	2,009
MOABU	ACTUALS	3814	231	53948G	24.60	2,009
MOABU	ACTUALS	3828	231	53948G	120.00	2,009
MOABU	ACTUALS	3838	231	53948G	321.25	2,009
MOABU	ACTUALS	5411	231	53948G	849.73	2,009
MOABU	ACTUALS	5605	231	53948G	88.75	2,009
MOABU	ACTUALS	6145	231	53948G	333.29	2,009
MOABU	ACTUALS	6147	231	53948G	329.15	2,009
MOABU	ACTUALS	9398	231	53948G	-34,641.50	2,009
MOABU	ACTUALS	1101	231	53949G	14,662.32	2,009
MOABU	ACTUALS	1301	231	53949G	1,490.68	2,009
MOABU	ACTUALS	1401	231	53949G	12,450.31	2,009
MOABU	ACTUALS	2101	231	53949G	38.15	2,009
MOABU	ACTUALS	3101	231	53949G	4,380.00	2,009
MOABU	ACTUALS	3202	231	53949G	504.92	2,009

2009 Expend - ICP Units  
All Expend and Revenues

Unit	Ledger	Acct	Fund	DeptID	Sum Total Amt	Year
MOABU	ACTUALS	3302	231	53949G	94.00	2,009
MOABU	ACTUALS	3802	231	53949G	50.00	2,009
MOABU	ACTUALS	3828	231	53949G	175.00	2,009
MOABU	ACTUALS	6022	231	53949G	8.00	2,009
MOABU	ACTUALS	6061	231	53949G	10.00	2,009
MOABU	ACTUALS	6085	231	53949G	300.00	2,009
MOABU	ACTUALS	6091	231	53949G	63.00	2,009
MOABU	ACTUALS	6095	231	53949G	204.00	2,009
MOABU	ACTUALS	6103	231	53949G	702.00	2,009
MOABU	ACTUALS	6104	231	53949G	124.00	2,009
MOABU	ACTUALS	6105	231	53949G	105.00	2,009
MOABU	ACTUALS	6109	231	53949G	6.00	2,009
MOABU	ACTUALS	6110	231	53949G	214.00	2,009
MOABU	ACTUALS	6145	231	53949G	349.56	2,009
MOABU	ACTUALS	6147	231	53949G	249.01	2,009
MOABU	ACTUALS	6181	231	53949G	188.00	2,009
MOABU	ACTUALS	6198	231	53949G	270.00	2,009
MOABU	ACTUALS	9825	231	53949G	-36,637.95	2,009
MOABU	ACTUALS	6103	231	53958G	0.60	2,009
MOABU	ACTUALS	9825	231	53958G	-0.60	2,009
MOABU	ACTUALS	3838	231	53959G	12,970.00	2,009
MOABU	ACTUALS	6022	231	53959G	2.00	2,009
MOABU	ACTUALS	6061	231	53959G	2.00	2,009
MOABU	ACTUALS	6091	231	53959G	12.00	2,009
MOABU	ACTUALS	6095	231	53959G	38.00	2,009
MOABU	ACTUALS	6103	231	53959G	130.00	2,009
MOABU	ACTUALS	6105	231	53959G	19.00	2,009
MOABU	ACTUALS	6109	231	53959G	1.00	2,009
MOABU	ACTUALS	6110	231	53959G	38.00	2,009
MOABU	ACTUALS	9825	231	53959G	-13,212.00	2,009
MOABU	ACTUALS	3838	261	539710G	2,671.97	2,009
MOABU	ACTUALS	6022	261	539710G	1.00	2,009
MOABU	ACTUALS	6091	261	539710G	21.00	2,009
MOABU	ACTUALS	6095	261	539710G	133.00	2,009
MOABU	ACTUALS	6103	261	539710G	482.00	2,009
MOABU	ACTUALS	6104	261	539710G	24.00	2,009
MOABU	ACTUALS	6105	261	539710G	57.00	2,009
MOABU	ACTUALS	6109	261	539710G	3.00	2,009
MOABU	ACTUALS	6110	261	539710G	155.00	2,009
MOABU	ACTUALS	9609	261	539710G	-20,000.00	2,009
MOABU	ACTUALS	3838	231	53978G	-2,320.78	2,009
MOABU	ACTUALS	2201	261	53979G	1,957.12	2,009
MOABU	ACTUALS	3101	261	53979G	10,850.00	2,009
MOABU	ACTUALS	3332	261	53979G	18.99	2,009
MOABU	ACTUALS	3334	261	53979G	2,020.51	2,009
MOABU	ACTUALS	3336	261	53979G	1,034.41	2,009
MOABU	ACTUALS	3337	261	53979G	384.00	2,009
MOABU	ACTUALS	3802	261	53979G	3,120.00	2,009
MOABU	ACTUALS	3803	261	53979G	2,481.10	2,009
MOABU	ACTUALS	3808	261	53979G	1,750.00	2,009
MOABU	ACTUALS	3838	261	53979G	1,785.60	2,009
MOABU	ACTUALS	5603	261	53979G	832.26	2,009

2009 Expend - ICP Units  
All Expend and Revenues

Unit	Ledger	Acct	Fund	DeptID	Sum Total Amt	Year
MOABU	ACTUALS	6085	261	53979G	105.00	2,009
MOABU	ACTUALS	9609	261	53979G	-6,000.00	2,009
MOABU	ACTUALS	1101	231	53988G	265.78	2,009
MOABU	ACTUALS	1301	231	53988G	23.93	2,009
MOABU	ACTUALS	1401	231	53988G	164.38	2,009
MOABU	ACTUALS	2101	231	53988G	191.32	2,009
MOABU	ACTUALS	3101	231	53988G	987.11	2,009
MOABU	ACTUALS	3334	231	53988G	526.51	2,009
MOABU	ACTUALS	3335	231	53988G	306.25	2,009
MOABU	ACTUALS	3336	231	53988G	172.22	2,009
MOABU	ACTUALS	3337	231	53988G	90.26	2,009
MOABU	ACTUALS	3338	231	53988G	985.00	2,009
MOABU	ACTUALS	3339	231	53988G	49.95	2,009
MOABU	ACTUALS	6145	231	53988G	5.82	2,009
MOABU	ACTUALS	6147	231	53988G	4.14	2,009
MOABU	ACTUALS	9398	231	53988G	-1,985.00	2,009
MOABU	ACTUALS	9825	231	53988G	-1,000.00	2,009
MOABU	ACTUALS	3101	231	53999G	1,800.00	2,009
MOABU	ACTUALS	6091	231	53999G	2.00	2,009
MOABU	ACTUALS	6095	231	53999G	5.00	2,009
MOABU	ACTUALS	6103	231	53999G	19.00	2,009
MOABU	ACTUALS	6105	231	53999G	2.00	2,009
MOABU	ACTUALS	6110	231	53999G	5.00	2,009
MOABU	ACTUALS	9398	231	53999G	-1,833.00	2,009
MOABU	ACTUALS	1101	261	54630G	321,141.06	2,009
MOABU	ACTUALS	1201	261	54630G	265.63	2,009
MOABU	ACTUALS	1301	261	54630G	5,306.87	2,009
MOABU	ACTUALS	1401	261	54630G	41,801.31	2,009
MOABU	ACTUALS	3101	261	54630G	24,000.00	2,009
MOABU	ACTUALS	6145	261	54630G	463.59	2,009
MOABU	ACTUALS	6147	261	54630G	330.26	2,009
MOABU	ACTUALS	1101	162	5470	439,298.39	2,009
MOABU	ACTUALS	1201	162	5470	7,222.50	2,009
MOABU	ACTUALS	1301	162	5470	32,666.11	2,009
MOABU	ACTUALS	1401	162	5470	203,093.75	2,009
MOABU	ACTUALS	1501	162	5470	456.55	2,009
MOABU	ACTUALS	2101	162	5470	619.84	2,009
MOABU	ACTUALS	2201	162	5470	5,631.38	2,009
MOABU	ACTUALS	2205	162	5470	425.00	2,009
MOABU	ACTUALS	2208	162	5470	10,111.61	2,009
MOABU	ACTUALS	2209	162	5470	8,903.23	2,009
MOABU	ACTUALS	2301	162	5470	21,967.55	2,009
MOABU	ACTUALS	3101	162	5470	13,013.39	2,009
MOABU	ACTUALS	3102	162	5470	170.00	2,009
MOABU	ACTUALS	3105	162	5470	819.00	2,009
MOABU	ACTUALS	3201	162	5470	4,688.61	2,009
MOABU	ACTUALS	3202	162	5470	50.85	2,009
MOABU	ACTUALS	3203	162	5470	478.06	2,009
MOABU	ACTUALS	3302	162	5470	283.16	2,009
MOABU	ACTUALS	3303	162	5470	197.57	2,009
MOABU	ACTUALS	3501	162	5470	16,711.94	2,009
MOABU	ACTUALS	3601	162	5470	99,816.37	2,009

2009 Expend - ICP Units  
All Expend and Revenues

Unit	Ledger	Acct	Fund	DeptID	Sum Total Amt	Year
MOABU	ACTUALS	3701	162	5470	7,636.26	2,009
MOABU	ACTUALS	3702	162	5470	121,775.00	2,009
MOABU	ACTUALS	3801	162	5470	194.04	2,009
MOABU	ACTUALS	3802	162	5470	3,856.83	2,009
MOABU	ACTUALS	3805	162	5470	235.00	2,009
MOABU	ACTUALS	3807	162	5470	163.00	2,009
MOABU	ACTUALS	3814	162	5470	4,765.46	2,009
MOABU	ACTUALS	3815	162	5470	29,500.00	2,009
MOABU	ACTUALS	3822	162	5470	1,455.47	2,009
MOABU	ACTUALS	5411	162	5470	1,206.88	2,009
MOABU	ACTUALS	5603	162	5470	912.05	2,009
MOABU	ACTUALS	5604	162	5470	23.20	2,009
MOABU	ACTUALS	5605	162	5470	399.29	2,009
MOABU	ACTUALS	6022	162	5470	65.00	2,009
MOABU	ACTUALS	6026	162	5470	1,135.75	2,009
MOABU	ACTUALS	6029	162	5470	0.16	2,009
MOABU	ACTUALS	6031	162	5470	2,836.75	2,009
MOABU	ACTUALS	6037	162	5470	3,468.35	2,009
MOABU	ACTUALS	6048	162	5470	2,018.08	2,009
MOABU	ACTUALS	6049	162	5470	12,772.47	2,009
MOABU	ACTUALS	6061	162	5470	2,724.09	2,009
MOABU	ACTUALS	6064	162	5470	7,059.02	2,009
MOABU	ACTUALS	6080	162	5470	14,280.58	2,009
MOABU	ACTUALS	6081	162	5470	960.76	2,009
MOABU	ACTUALS	6085	162	5470	945.03	2,009
MOABU	ACTUALS	6086	162	5470	259.46	2,009
MOABU	ACTUALS	6088	162	5470	14,818.38	2,009
MOABU	ACTUALS	6089	162	5470	21,367.15	2,009
MOABU	ACTUALS	6091	162	5470	1,868.99	2,009
MOABU	ACTUALS	6094	162	5470	7,014.16	2,009
MOABU	ACTUALS	6095	162	5470	7,460.17	2,009
MOABU	ACTUALS	6103	162	5470	7,911.73	2,009
MOABU	ACTUALS	6104	162	5470	2,327.10	2,009
MOABU	ACTUALS	6105	162	5470	3,040.05	2,009
MOABU	ACTUALS	6109	162	5470	5,437.18	2,009
MOABU	ACTUALS	6110	162	5470	9,475.25	2,009
MOABU	ACTUALS	6145	162	5470	10,299.44	2,009
MOABU	ACTUALS	6147	162	5470	8,376.05	2,009
MOABU	ACTUALS	6181	162	5470	5,427.04	2,009
MOABU	ACTUALS	6198	162	5470	11,591.90	2,009
MOABU	ACTUALS	6354	162	5470	16,500.00	2,009
MOABU	ACTUALS	6500	162	5470	16,620.35	2,009
MOABU	ACTUALS	6562	162	5470	15,719.00	2,009
MOABU	ACTUALS	6666	162	5470	44,240.33	2,009
MOABU	ACTUALS	6668	162	5470	16,634.19	2,009
MOABU	ACTUALS	6971	162	5470	1,946.61	2,009
MOABU	ACTUALS	6972	162	5470	3,529.91	2,009
MOABU	ACTUALS	6973	162	5470	3,041.11	2,009
MOABU	ACTUALS	6975	162	5470	3,330.42	2,009
MOABU	ACTUALS	9441	162	5470	-108,082.39	2,009
MOABU	ACTUALS	9442	162	5470	-32,541.35	2,009
MOABU	ACTUALS	9499	162	5470	-27,329.08	2,009

2009 Expend - ICP Units  
All Expend and Revenues

Unit	Ledger	Acct	Fund	DeptID	Sum Total Amt	Year
MOABU	ACTUALS	9731	162	5470	-9,900.00	2,009
MOABU	ACTUALS	9798	162	5470	-7,265.10	2,009
MOABU	ACTUALS	4101	162	5471	202,492.31	2,009
MOABU	ACTUALS	4102	162	5471	159,322.99	2,009
MOABU	ACTUALS	4103	162	5471	1,847.65	2,009
MOABU	ACTUALS	6022	162	5471	0.00	2,009
MOABU	ACTUALS	6037	162	5471	1,112.40	2,009
MOABU	ACTUALS	6091	162	5471	599.43	2,009
MOABU	ACTUALS	6971	162	5471	624.31	2,009
MOABU	ACTUALS	6973	162	5471	975.36	2,009
MOABU	ACTUALS	1101	162	5473	202,570.64	2,009
MOABU	ACTUALS	1201	162	5473	523.70	2,009
MOABU	ACTUALS	1301	162	5473	17,226.57	2,009
MOABU	ACTUALS	1401	162	5473	101,198.26	2,009
MOABU	ACTUALS	1501	162	5473	2,350.73	2,009
MOABU	ACTUALS	2101	162	5473	767.43	2,009
MOABU	ACTUALS	2201	162	5473	10,736.67	2,009
MOABU	ACTUALS	2208	162	5473	382.78	2,009
MOABU	ACTUALS	2301	162	5473	2,405.91	2,009
MOABU	ACTUALS	3101	162	5473	1,160.00	2,009
MOABU	ACTUALS	3105	162	5473	514.75	2,009
MOABU	ACTUALS	3201	162	5473	3,232.75	2,009
MOABU	ACTUALS	3302	162	5473	117.15	2,009
MOABU	ACTUALS	3303	162	5473	126.47	2,009
MOABU	ACTUALS	3501	162	5473	46,005.86	2,009
MOABU	ACTUALS	3702	162	5473	4,116.00	2,009
MOABU	ACTUALS	3802	162	5473	2,207.60	2,009
MOABU	ACTUALS	3807	162	5473	1,036.00	2,009
MOABU	ACTUALS	3822	162	5473	1,047.95	2,009
MOABU	ACTUALS	6022	162	5473	0.00	2,009
MOABU	ACTUALS	6026	162	5473	480.51	2,009
MOABU	ACTUALS	6029	162	5473	0.03	2,009
MOABU	ACTUALS	6031	162	5473	1,200.16	2,009
MOABU	ACTUALS	6037	162	5473	1,317.87	2,009
MOABU	ACTUALS	6048	162	5473	1,076.32	2,009
MOABU	ACTUALS	6061	162	5473	1,452.85	2,009
MOABU	ACTUALS	6064	162	5473	3,764.84	2,009
MOABU	ACTUALS	6081	162	5473	406.46	2,009
MOABU	ACTUALS	6085	162	5473	241.81	2,009
MOABU	ACTUALS	6088	162	5473	7,903.18	2,009
MOABU	ACTUALS	6089	162	5473	11,395.83	2,009
MOABU	ACTUALS	6091	162	5473	710.17	2,009
MOABU	ACTUALS	6094	162	5473	3,740.86	2,009
MOABU	ACTUALS	6104	162	5473	2,337.11	2,009
MOABU	ACTUALS	6105	162	5473	512.02	2,009
MOABU	ACTUALS	6109	162	5473	10,456.13	2,009
MOABU	ACTUALS	6110	162	5473	4,575.95	2,009
MOABU	ACTUALS	6145	162	5473	4,814.20	2,009
MOABU	ACTUALS	6147	162	5473	4,214.15	2,009
MOABU	ACTUALS	6181	162	5473	2,894.45	2,009
MOABU	ACTUALS	6198	162	5473	6,182.35	2,009
MOABU	ACTUALS	6668	162	5473	104,944.17	2,009

2009 Expend - ICP Units  
All Expend and Revenues

Unit	Ledger	Acct	Fund	DeptID	Sum Total Amt	Year
MOABU	ACTUALS	6971	162	5473	739.69	2,009
MOABU	ACTUALS	6972	162	5473	1,882.61	2,009
MOABU	ACTUALS	6973	162	5473	1,155.56	2,009
MOABU	ACTUALS	6975	162	5473	22,351.36	2,009
MOABU	ACTUALS	9443	162	5473	-159,133.75	2,009
MOABU	ACTUALS	9791	162	5473	-1.00	2,009
MOABU	ACTUALS	3901	162	5474	1,422,471.94	2,009
MOABU	ACTUALS	6022	162	5474	0.00	2,009
MOABU	ACTUALS	6037	162	5474	5,037.31	2,009
MOABU	ACTUALS	6091	162	5474	2,714.46	2,009
MOABU	ACTUALS	6971	162	5474	2,827.16	2,009
MOABU	ACTUALS	6973	162	5474	4,416.83	2,009
MOABU	ACTUALS	3601	462	5478	0.00	2,009
MOABU	ACTUALS	5302	462	5478	2,632.84	2,009
MOABU	ACTUALS	7999	462	5478	-2,632.84	2,009
MOABU	ACTUALS	3101	462	5479	0.01	2,009
MOABU	ACTUALS	5302	462	5479	4,820.00	2,009
MOABU	ACTUALS	7999	462	5479	-4,820.01	2,009
MOABU	ACTUALS	9825	462	5479	-4,820.01	2,009
MOABU	ACTUALS	3101	231	54826G	44,725.00	2,009
MOABU	ACTUALS	3814	231	54826G	975.00	2,009
MOABU	ACTUALS	3828	231	54826G	150.00	2,009
MOABU	ACTUALS	5607	231	54826G	29,879.50	2,009
MOABU	ACTUALS	9398	231	54826G	-75,729.50	2,009
MOABU	ACTUALS	3601	462	5624	20,915.74	2,009
MOABU	ACTUALS	7999	462	5624	-20,915.74	2,009
MOABU	ACTUALS	2301	462	5625	2,312.55	2,009
MOABU	ACTUALS	3101	462	5625	0.00	2,009
MOABU	ACTUALS	3808	462	5625	63,936.81	2,009
MOABU	ACTUALS	5302	462	5625	15,119.57	2,009
MOABU	ACTUALS	7999	462	5625	-81,368.93	2,009
MOABU	ACTUALS	9601	462	5625	0.00	2,009
MOABU	ACTUALS	2201	462	5626	645.00	2,009
MOABU	ACTUALS	2301	462	5626	1,443.45	2,009
MOABU	ACTUALS	3101	462	5626	13,494.99	2,009
MOABU	ACTUALS	3303	462	5626	265.00	2,009
MOABU	ACTUALS	3601	462	5626	218,918.53	2,009
MOABU	ACTUALS	3808	462	5626	895.00	2,009
MOABU	ACTUALS	5202	462	5626	0.00	2,009
MOABU	ACTUALS	5301	462	5626	8,085.79	2,009
MOABU	ACTUALS	5302	462	5626	70,286.18	2,009
MOABU	ACTUALS	5609	462	5626	5,000.00	2,009
MOABU	ACTUALS	6001	462	5626	2,882.89	2,009
MOABU	ACTUALS	7999	462	5626	-321,916.83	2,009
MOABU	ACTUALS	9601	462	5626	0.00	2,009
MOABU	ACTUALS	3101	462	5627	480.00	2,009
MOABU	ACTUALS	3303	462	5627	0.00	2,009
MOABU	ACTUALS	5301	462	5627	26,644.10	2,009
MOABU	ACTUALS	5302	462	5627	7,395.12	2,009
MOABU	ACTUALS	5401	462	5627	195,093.00	2,009
MOABU	ACTUALS	7999	462	5627	-229,612.22	2,009
MOABU	ACTUALS	9601	462	5627	0.00	2,009

2009 Expend - ICP Units  
All Expend and Revenues

Unit	Ledger	Acct	Fund	DeptID	Sum Total Amt	Year
MOABU	ACTUALS	2301	462	5628	5,100.00	2,009
MOABU	ACTUALS	3101	462	5628	39,260.29	2,009
MOABU	ACTUALS	3601	462	5628	0.00	2,009
MOABU	ACTUALS	3802	462	5628	212.48	2,009
MOABU	ACTUALS	3808	462	5628	210.00	2,009
MOABU	ACTUALS	3814	462	5628	675.00	2,009
MOABU	ACTUALS	5202	462	5628	0.00	2,009
MOABU	ACTUALS	5609	462	5628	8,318.80	2,009
MOABU	ACTUALS	7999	462	5628	-53,776.57	2,009
MOABU	ACTUALS	9601	462	5628	0.00	2,009
MOABU	ACTUALS	9601	462	5629	-1,416,880.00	2,009

2009 CSP IGC's All Units

Unit	Ledger	Acct	Fund	DeptID	Sum Total Amt	Year
MOABU	ACTUALS	6500	401	1615	10,227.94	2,009
MOABU	ACTUALS	6500	401	1622	6,392.43	2,009
MOABU	ACTUALS	6500	401	1623	26,848.27	2,009
MOABU	ACTUALS	6500	461	1625	23,012.81	2,009
MOABU	ACTUALS	6500	401	1628	20,455.83	2,009
MOABU	ACTUALS	6022	101	5105	1,013.86	2,009
MOABU	ACTUALS	6023	101	5105	1,563.34	2,009
MOABU	ACTUALS	6026	101	5105	1,357.72	2,009
MOABU	ACTUALS	6029	101	5105	0.85	2,009
MOABU	ACTUALS	6031	101	5105	3,391.09	2,009
MOABU	ACTUALS	6037	101	5105	4,300.55	2,009
MOABU	ACTUALS	6048	101	5105	74,257.56	2,009
MOABU	ACTUALS	6049	101	5105	12,772.50	2,009
MOABU	ACTUALS	6061	101	5105	635.66	2,009
MOABU	ACTUALS	6064	101	5105	1,647.10	2,009
MOABU	ACTUALS	6073	101	5105	42,823.76	2,009
MOABU	ACTUALS	6076	101	5105	0.00	2,009
MOABU	ACTUALS	6079	101	5105	93,563.79	2,009
MOABU	ACTUALS	6080	101	5105	6,321.38	2,009
MOABU	ACTUALS	6081	101	5105	1,148.47	2,009
MOABU	ACTUALS	6085	101	5105	20,454.68	2,009
MOABU	ACTUALS	6088	101	5105	3,457.63	2,009
MOABU	ACTUALS	6089	101	5105	4,985.68	2,009
MOABU	ACTUALS	6091	101	5105	2,317.44	2,009
MOABU	ACTUALS	6094	101	5105	1,636.64	2,009
MOABU	ACTUALS	6095	101	5105	2,828.41	2,009
MOABU	ACTUALS	6103	101	5105	22,605.00	2,009
MOABU	ACTUALS	6104	101	5105	1,226.90	2,009
MOABU	ACTUALS	6105	101	5105	1,292.84	2,009
MOABU	ACTUALS	6110	101	5105	4,585.98	2,009
MOABU	ACTUALS	6145	101	5105	9,701.12	2,009
MOABU	ACTUALS	6147	101	5105	8,385.66	2,009
MOABU	ACTUALS	6181	101	5105	1,266.33	2,009
MOABU	ACTUALS	6198	101	5105	2,704.77	2,009
MOABU	ACTUALS	6500	101	5105	0.00	2,009
MOABU	ACTUALS	6666	101	5105	74,452.21	2,009
MOABU	ACTUALS	6668	101	5105	58,745.56	2,009
MOABU	ACTUALS	6971	101	5105	2,413.68	2,009
MOABU	ACTUALS	6972	101	5105	823.65	2,009
MOABU	ACTUALS	6973	101	5105	3,770.82	2,009
MOABU	ACTUALS	6974	101	5105	35,461.58	2,009
MOABU	ACTUALS	6975	101	5105	11,236.50	2,009
MOABU	ACTUALS	6022	101	5107	0.00	2,009
MOABU	ACTUALS	6026	101	5107	1,037.47	2,009
MOABU	ACTUALS	6031	101	5107	2,591.30	2,009
MOABU	ACTUALS	6037	101	5107	3,527.93	2,009
MOABU	ACTUALS	6081	101	5107	877.62	2,009
MOABU	ACTUALS	6091	101	5107	1,901.10	2,009
MOABU	ACTUALS	6105	101	5107	64.00	2,009
MOABU	ACTUALS	6110	101	5107	79.98	2,009
MOABU	ACTUALS	6971	101	5107	1,980.06	2,009
MOABU	ACTUALS	6973	101	5107	3,093.35	2,009

2009 CSP IGC's All Units

Unit	Ledger	Acct	Fund	DeptID	Sum Total Amt	Year
MOABU	ACTUALS	6022	101	5108	0.00	2,009
MOABU	ACTUALS	6026	101	5108	2,278.03	2,009
MOABU	ACTUALS	6031	101	5108	5,689.63	2,009
MOABU	ACTUALS	6037	101	5108	6,210.39	2,009
MOABU	ACTUALS	6081	101	5108	1,927.00	2,009
MOABU	ACTUALS	6091	101	5108	3,346.57	2,009
MOABU	ACTUALS	6105	101	5108	121.59	2,009
MOABU	ACTUALS	6110	101	5108	416.61	2,009
MOABU	ACTUALS	6971	101	5108	3,485.55	2,009
MOABU	ACTUALS	6973	101	5108	5,445.40	2,009
MOABU	ACTUALS	6022	101	5109	0.00	2,009
MOABU	ACTUALS	6026	101	5109	474.18	2,009
MOABU	ACTUALS	6031	101	5109	1,184.38	2,009
MOABU	ACTUALS	6037	101	5109	1,796.53	2,009
MOABU	ACTUALS	6081	101	5109	401.14	2,009
MOABU	ACTUALS	6091	101	5109	968.13	2,009
MOABU	ACTUALS	6105	101	5109	435.22	2,009
MOABU	ACTUALS	6110	101	5109	1,116.50	2,009
MOABU	ACTUALS	6971	101	5109	1,008.32	2,009
MOABU	ACTUALS	6973	101	5109	1,575.25	2,009
MOABU	ACTUALS	6110	101	5112	9,885.14	2,009
MOABU	ACTUALS	6500	101	5112	6,392.38	2,009
MOABU	ACTUALS	6668	101	5112	250,202.40	2,009
MOABU	ACTUALS	6975	101	5112	116,185.57	2,009
MOABU	ACTUALS	6110	101	5113	696.59	2,009
MOABU	ACTUALS	6342	101	5113	375.00	2,009
MOABU	ACTUALS	6500	101	5113	26,848.30	2,009
MOABU	ACTUALS	6668	101	5113	169,281.06	2,009
MOABU	ACTUALS	6975	101	5113	78,608.45	2,009
MOABU	ACTUALS	6080	161	5114	125.13	2,009
MOABU	ACTUALS	6103	161	5114	16,953.74	2,009
MOABU	ACTUALS	6110	161	5114	743.20	2,009
MOABU	ACTUALS	6500	161	5114	23,012.76	2,009
MOABU	ACTUALS	6668	161	5114	169,688.75	2,009
MOABU	ACTUALS	6975	161	5114	78,797.72	2,009
MOABU	ACTUALS	6022	162	5115	0.00	2,009
MOABU	ACTUALS	6026	162	5115	45.14	2,009
MOABU	ACTUALS	6031	162	5115	112.77	2,009
MOABU	ACTUALS	6037	162	5115	153.58	2,009
MOABU	ACTUALS	6080	162	5115	60.77	2,009
MOABU	ACTUALS	6081	162	5115	38.21	2,009
MOABU	ACTUALS	6091	162	5115	82.76	2,009
MOABU	ACTUALS	6095	162	5115	47.45	2,009
MOABU	ACTUALS	6110	162	5115	706.54	2,009
MOABU	ACTUALS	6500	162	5115	3,835.47	2,009
MOABU	ACTUALS	6668	162	5115	3,128.99	2,009
MOABU	ACTUALS	6971	162	5115	86.20	2,009
MOABU	ACTUALS	6973	162	5115	134.67	2,009
MOABU	ACTUALS	6975	162	5115	1,453.03	2,009
MOABU	ACTUALS	6080	101	5116	489.76	2,009
MOABU	ACTUALS	6095	101	5116	142.36	2,009
MOABU	ACTUALS	6110	101	5116	1,299.80	2,009

2009 CSP IGC's All Units

Unit	Ledger	Acct	Fund	DeptID	Sum Total Amt	Year
MOABU	ACTUALS	6342	101	5116	2,042.00	2,009
MOABU	ACTUALS	6462	101	5116	372,746.00	2,009
MOABU	ACTUALS	6500	101	5116	20,455.81	2,009
MOABU	ACTUALS	6668	101	5116	214,879.73	2,009
MOABU	ACTUALS	6975	101	5116	99,782.89	2,009
MOABU	ACTUALS	6110	101	5117	259.95	2,009
MOABU	ACTUALS	6500	101	5117	10,227.98	2,009
MOABU	ACTUALS	6668	101	5117	12,742.65	2,009
MOABU	ACTUALS	6975	101	5117	5,917.28	2,009
MOABU	ACTUALS	6022	101	5118	0.00	2,009
MOABU	ACTUALS	6026	101	5118	292.82	2,009
MOABU	ACTUALS	6031	101	5118	731.31	2,009
MOABU	ACTUALS	6037	101	5118	867.97	2,009
MOABU	ACTUALS	6048	101	5118	201.80	2,009
MOABU	ACTUALS	6061	101	5118	272.36	2,009
MOABU	ACTUALS	6064	101	5118	705.91	2,009
MOABU	ACTUALS	6081	101	5118	247.69	2,009
MOABU	ACTUALS	6085	101	5118	2,520.43	2,009
MOABU	ACTUALS	6088	101	5118	1,481.82	2,009
MOABU	ACTUALS	6089	101	5118	2,136.70	2,009
MOABU	ACTUALS	6091	101	5118	467.70	2,009
MOABU	ACTUALS	6094	101	5118	701.41	2,009
MOABU	ACTUALS	6104	101	5118	450.10	2,009
MOABU	ACTUALS	6105	101	5118	236.82	2,009
MOABU	ACTUALS	6145	101	5118	890.60	2,009
MOABU	ACTUALS	6147	101	5118	905.29	2,009
MOABU	ACTUALS	6181	101	5118	542.68	2,009
MOABU	ACTUALS	6198	101	5118	1,159.19	2,009
MOABU	ACTUALS	6971	101	5118	487.14	2,009
MOABU	ACTUALS	6972	101	5118	352.98	2,009
MOABU	ACTUALS	6973	101	5118	761.05	2,009
MOABU	ACTUALS	6026	162	5119	24.68	2,009
MOABU	ACTUALS	6031	162	5119	61.54	2,009
MOABU	ACTUALS	6048	162	5119	134.54	2,009
MOABU	ACTUALS	6061	162	5119	181.59	2,009
MOABU	ACTUALS	6064	162	5119	470.61	2,009
MOABU	ACTUALS	6081	162	5119	20.84	2,009
MOABU	ACTUALS	6088	162	5119	987.90	2,009
MOABU	ACTUALS	6089	162	5119	1,424.48	2,009
MOABU	ACTUALS	6094	162	5119	467.62	2,009
MOABU	ACTUALS	6145	162	5119	268.89	2,009
MOABU	ACTUALS	6147	162	5119	273.19	2,009
MOABU	ACTUALS	6181	162	5119	361.83	2,009
MOABU	ACTUALS	6198	162	5119	772.76	2,009
MOABU	ACTUALS	6972	162	5119	235.34	2,009
MOABU	ACTUALS	6022	301	5120	0.00	2,009
MOABU	ACTUALS	6026	301	5120	0.00	2,009
MOABU	ACTUALS	6031	301	5120	0.00	2,009
MOABU	ACTUALS	6037	301	5120	0.00	2,009
MOABU	ACTUALS	6081	301	5120	0.00	2,009
MOABU	ACTUALS	6091	301	5120	0.00	2,009
MOABU	ACTUALS	6971	301	5120	0.00	2,009

2009 CSP IGC's All Units

Unit	Ledger	Acct	Fund	DeptID	Sum Total Amt	Year
MOABU	ACTUALS	6973	301	5120	0.00	2,009
MOABU	ACTUALS	6022	161	5121	0.00	2,009
MOABU	ACTUALS	6037	161	5121	7,544.34	2,009
MOABU	ACTUALS	6091	161	5121	4,065.42	2,009
MOABU	ACTUALS	6971	161	5121	4,234.24	2,009
MOABU	ACTUALS	6973	161	5121	6,615.02	2,009
MOABU	ACTUALS	6022	101	5122	0.00	2,009
MOABU	ACTUALS	6037	101	5122	332.03	2,009
MOABU	ACTUALS	6091	101	5122	178.93	2,009
MOABU	ACTUALS	6971	101	5122	186.36	2,009
MOABU	ACTUALS	6973	101	5122	291.12	2,009
MOABU	ACTUALS	6022	101	5123	0.00	2,009
MOABU	ACTUALS	6026	101	5123	213.78	2,009
MOABU	ACTUALS	6031	101	5123	533.98	2,009
MOABU	ACTUALS	6037	101	5123	726.34	2,009
MOABU	ACTUALS	6080	101	5123	228.81	2,009
MOABU	ACTUALS	6081	101	5123	180.84	2,009
MOABU	ACTUALS	6091	101	5123	391.40	2,009
MOABU	ACTUALS	6095	101	5123	332.19	2,009
MOABU	ACTUALS	6105	101	5123	19.18	2,009
MOABU	ACTUALS	6110	101	5123	303.29	2,009
MOABU	ACTUALS	6971	101	5123	407.63	2,009
MOABU	ACTUALS	6973	101	5123	636.87	2,009
MOABU	ACTUALS	6048	101	5210	0.00	2,009
MOABU	ACTUALS	6145	101	5210	0.00	2,009
MOABU	ACTUALS	6147	101	5210	0.00	2,009
MOABU	ACTUALS	6022	261	5317G	1.00	2,009
MOABU	ACTUALS	6061	261	5317G	1.00	2,009
MOABU	ACTUALS	6091	261	5317G	14.00	2,009
MOABU	ACTUALS	6095	261	5317G	75.00	2,009
MOABU	ACTUALS	6103	261	5317G	267.00	2,009
MOABU	ACTUALS	6104	261	5317G	8.00	2,009
MOABU	ACTUALS	6105	261	5317G	35.00	2,009
MOABU	ACTUALS	6109	261	5317G	1.00	2,009
MOABU	ACTUALS	6110	261	5317G	84.00	2,009
MOABU	ACTUALS	6022	101	5355	0.00	2,009
MOABU	ACTUALS	6026	101	5355	709.05	2,009
MOABU	ACTUALS	6029	101	5355	0.05	2,009
MOABU	ACTUALS	6031	101	5355	1,770.96	2,009
MOABU	ACTUALS	6037	101	5355	2,121.97	2,009
MOABU	ACTUALS	6048	101	5355	59,170.04	2,009
MOABU	ACTUALS	6049	101	5355	12,772.48	2,009
MOABU	ACTUALS	6061	101	5355	726.42	2,009
MOABU	ACTUALS	6064	101	5355	1,882.42	2,009
MOABU	ACTUALS	6073	101	5355	3,132.70	2,009
MOABU	ACTUALS	6080	101	5355	9,446.12	2,009
MOABU	ACTUALS	6081	101	5355	599.78	2,009
MOABU	ACTUALS	6085	101	5355	45,444.73	2,009
MOABU	ACTUALS	6086	101	5355	570.80	2,009
MOABU	ACTUALS	6088	101	5355	3,951.59	2,009
MOABU	ACTUALS	6089	101	5355	5,697.90	2,009
MOABU	ACTUALS	6091	101	5355	1,143.46	2,009

2009 CSP IGC's All Units

Unit	Ledger	Acct	Fund	DeptID	Sum Total Amt	Year
MOABU	ACTUALS	6094	101	5355	1,870.45	2,009
MOABU	ACTUALS	6095	101	5355	2,818.92	2,009
MOABU	ACTUALS	6103	101	5355	13,939.78	2,009
MOABU	ACTUALS	6104	101	5355	1,203.56	2,009
MOABU	ACTUALS	6105	101	5355	614.40	2,009
MOABU	ACTUALS	6110	101	5355	7,755.49	2,009
MOABU	ACTUALS	6145	101	5355	8,522.56	2,009
MOABU	ACTUALS	6147	101	5355	7,197.07	2,009
MOABU	ACTUALS	6181	101	5355	1,447.23	2,009
MOABU	ACTUALS	6198	101	5355	3,091.19	2,009
MOABU	ACTUALS	6500	101	5355	99,722.19	2,009
MOABU	ACTUALS	6562	101	5355	102,543.35	2,009
MOABU	ACTUALS	6666	101	5355	251,250.28	2,009
MOABU	ACTUALS	6668	101	5355	1,182,076.38	2,009
MOABU	ACTUALS	6774	101	5355	3,136.55	2,009
MOABU	ACTUALS	6971	101	5355	1,190.98	2,009
MOABU	ACTUALS	6972	101	5355	941.30	2,009
MOABU	ACTUALS	6973	101	5355	1,860.58	2,009
MOABU	ACTUALS	6974	101	5355	2,594.13	2,009
MOABU	ACTUALS	6975	101	5355	85,000.67	2,009
MOABU	ACTUALS	6022	101	5364	0.00	2,009
MOABU	ACTUALS	6026	101	5364	1,719.31	2,009
MOABU	ACTUALS	6029	101	5364	0.07	2,009
MOABU	ACTUALS	6031	101	5364	4,294.24	2,009
MOABU	ACTUALS	6037	101	5364	5,267.96	2,009
MOABU	ACTUALS	6048	101	5364	1,883.54	2,009
MOABU	ACTUALS	6061	101	5364	2,542.48	2,009
MOABU	ACTUALS	6064	101	5364	6,588.43	2,009
MOABU	ACTUALS	6080	101	5364	10,506.66	2,009
MOABU	ACTUALS	6081	101	5364	1,454.41	2,009
MOABU	ACTUALS	6085	101	5364	546.75	2,009
MOABU	ACTUALS	6088	101	5364	13,830.50	2,009
MOABU	ACTUALS	6089	101	5364	19,942.69	2,009
MOABU	ACTUALS	6091	101	5364	2,838.75	2,009
MOABU	ACTUALS	6094	101	5364	6,546.53	2,009
MOABU	ACTUALS	6095	101	5364	6,653.38	2,009
MOABU	ACTUALS	6104	101	5364	4,544.19	2,009
MOABU	ACTUALS	6105	101	5364	1,004.82	2,009
MOABU	ACTUALS	6109	101	5364	24,676.41	2,009
MOABU	ACTUALS	6110	101	5364	9,085.32	2,009
MOABU	ACTUALS	6145	101	5364	21,495.33	2,009
MOABU	ACTUALS	6147	101	5364	18,619.63	2,009
MOABU	ACTUALS	6181	101	5364	5,065.25	2,009
MOABU	ACTUALS	6198	101	5364	10,819.11	2,009
MOABU	ACTUALS	6666	101	5364	82,232.94	2,009
MOABU	ACTUALS	6668	101	5364	498,809.79	2,009
MOABU	ACTUALS	6971	101	5364	2,956.63	2,009
MOABU	ACTUALS	6972	101	5364	3,294.59	2,009
MOABU	ACTUALS	6973	101	5364	4,619.09	2,009
MOABU	ACTUALS	6975	101	5364	43,523.80	2,009
MOABU	ACTUALS	6022	101	5371	0.00	2,009
MOABU	ACTUALS	6026	101	5371	1,460.54	2,009

2009 CSP IGC's All Units

Unit	Ledger	Acct	Fund	DeptID	Sum Total Amt	Year
MOABU	ACTUALS	6029	101	5371	0.07	2,009
MOABU	ACTUALS	6031	101	5371	3,647.87	2,009
MOABU	ACTUALS	6037	101	5371	4,487.20	2,009
MOABU	ACTUALS	6048	101	5371	1,412.67	2,009
MOABU	ACTUALS	6061	101	5371	1,906.85	2,009
MOABU	ACTUALS	6064	101	5371	4,941.30	2,009
MOABU	ACTUALS	6080	101	5371	8,944.69	2,009
MOABU	ACTUALS	6081	101	5371	1,235.47	2,009
MOABU	ACTUALS	6085	101	5371	3,914.46	2,009
MOABU	ACTUALS	6088	101	5371	10,372.90	2,009
MOABU	ACTUALS	6089	101	5371	14,957.00	2,009
MOABU	ACTUALS	6091	101	5371	2,418.01	2,009
MOABU	ACTUALS	6094	101	5371	4,909.90	2,009
MOABU	ACTUALS	6095	101	5371	2,809.43	2,009
MOABU	ACTUALS	6104	101	5371	3,690.71	2,009
MOABU	ACTUALS	6105	101	5371	601.64	2,009
MOABU	ACTUALS	6110	101	5371	4,086.04	2,009
MOABU	ACTUALS	6145	101	5371	20,050.90	2,009
MOABU	ACTUALS	6147	101	5371	17,137.68	2,009
MOABU	ACTUALS	6181	101	5371	3,798.98	2,009
MOABU	ACTUALS	6198	101	5371	8,114.34	2,009
MOABU	ACTUALS	6971	101	5371	2,518.43	2,009
MOABU	ACTUALS	6972	101	5371	2,470.95	2,009
MOABU	ACTUALS	6973	101	5371	3,934.47	2,009
MOABU	ACTUALS	6022	101	5372	0.00	2,009
MOABU	ACTUALS	6026	101	5372	1,130.45	2,009
MOABU	ACTUALS	6029	101	5372	0.08	2,009
MOABU	ACTUALS	6031	101	5372	2,823.47	2,009
MOABU	ACTUALS	6037	101	5372	3,528.13	2,009
MOABU	ACTUALS	6048	101	5372	1,749.01	2,009
MOABU	ACTUALS	6061	101	5372	2,360.86	2,009
MOABU	ACTUALS	6064	101	5372	6,117.86	2,009
MOABU	ACTUALS	6080	101	5372	15,014.63	2,009
MOABU	ACTUALS	6081	101	5372	956.28	2,009
MOABU	ACTUALS	6085	101	5372	8,550.06	2,009
MOABU	ACTUALS	6088	101	5372	12,842.62	2,009
MOABU	ACTUALS	6089	101	5372	18,518.21	2,009
MOABU	ACTUALS	6091	101	5372	1,901.19	2,009
MOABU	ACTUALS	6094	101	5372	6,078.91	2,009
MOABU	ACTUALS	6095	101	5372	3,692.10	2,009
MOABU	ACTUALS	6104	101	5372	4,427.49	2,009
MOABU	ACTUALS	6105	101	5372	1,433.63	2,009
MOABU	ACTUALS	6109	101	5372	14,220.32	2,009
MOABU	ACTUALS	6110	101	5372	8,558.69	2,009
MOABU	ACTUALS	6145	101	5372	14,364.67	2,009
MOABU	ACTUALS	6147	101	5372	12,349.93	2,009
MOABU	ACTUALS	6181	101	5372	4,703.44	2,009
MOABU	ACTUALS	6198	101	5372	10,046.33	2,009
MOABU	ACTUALS	6971	101	5372	1,980.16	2,009
MOABU	ACTUALS	6972	101	5372	3,059.24	2,009
MOABU	ACTUALS	6973	101	5372	3,093.53	2,009
MOABU	ACTUALS	6022	101	5373	0.00	2,009

2009 CSP IGC's All Units

Unit	Ledger	Acct	Fund	DeptID	Sum Total Amt	Year
MOABU	ACTUALS	6026	101	5373	602.31	2,009
MOABU	ACTUALS	6029	101	5373	0.01	2,009
MOABU	ACTUALS	6031	101	5373	1,504.34	2,009
MOABU	ACTUALS	6037	101	5373	1,728.66	2,009
MOABU	ACTUALS	6048	101	5373	605.44	2,009
MOABU	ACTUALS	6061	101	5373	817.22	2,009
MOABU	ACTUALS	6064	101	5373	2,117.68	2,009
MOABU	ACTUALS	6080	101	5373	3,306.81	2,009
MOABU	ACTUALS	6081	101	5373	509.48	2,009
MOABU	ACTUALS	6085	101	5373	22,075.15	2,009
MOABU	ACTUALS	6088	101	5373	4,445.50	2,009
MOABU	ACTUALS	6089	101	5373	6,410.15	2,009
MOABU	ACTUALS	6091	101	5373	931.55	2,009
MOABU	ACTUALS	6094	101	5373	2,104.26	2,009
MOABU	ACTUALS	6095	101	5373	2,391.80	2,009
MOABU	ACTUALS	6104	101	5373	1,570.32	2,009
MOABU	ACTUALS	6105	101	5373	102.39	2,009
MOABU	ACTUALS	6110	101	5373	1,716.42	2,009
MOABU	ACTUALS	6145	101	5373	8,071.74	2,009
MOABU	ACTUALS	6147	101	5373	6,860.12	2,009
MOABU	ACTUALS	6181	101	5373	1,628.11	2,009
MOABU	ACTUALS	6198	101	5373	3,477.56	2,009
MOABU	ACTUALS	6971	101	5373	970.21	2,009
MOABU	ACTUALS	6972	101	5373	1,058.99	2,009
MOABU	ACTUALS	6973	101	5373	1,515.75	2,009
MOABU	ACTUALS	6022	101	5381	0.00	2,009
MOABU	ACTUALS	6026	101	5381	1,667.83	2,009
MOABU	ACTUALS	6029	101	5381	0.02	2,009
MOABU	ACTUALS	6031	101	5381	4,165.65	2,009
MOABU	ACTUALS	6037	101	5381	5,600.51	2,009
MOABU	ACTUALS	6048	101	5381	403.60	2,009
MOABU	ACTUALS	6061	101	5381	544.84	2,009
MOABU	ACTUALS	6064	101	5381	1,411.80	2,009
MOABU	ACTUALS	6080	101	5381	9,130.33	2,009
MOABU	ACTUALS	6081	101	5381	1,410.82	2,009
MOABU	ACTUALS	6085	101	5381	92.60	2,009
MOABU	ACTUALS	6088	101	5381	2,963.69	2,009
MOABU	ACTUALS	6089	101	5381	4,273.42	2,009
MOABU	ACTUALS	6091	101	5381	3,017.92	2,009
MOABU	ACTUALS	6094	101	5381	1,402.84	2,009
MOABU	ACTUALS	6095	101	5381	24,791.24	2,009
MOABU	ACTUALS	6104	101	5381	1,616.97	2,009
MOABU	ACTUALS	6105	101	5381	10,899.39	2,009
MOABU	ACTUALS	6110	101	5381	13,434.65	2,009
MOABU	ACTUALS	6145	101	5381	5,815.84	2,009
MOABU	ACTUALS	6147	101	5381	4,891.29	2,009
MOABU	ACTUALS	6181	101	5381	1,085.42	2,009
MOABU	ACTUALS	6198	101	5381	2,318.38	2,009
MOABU	ACTUALS	6971	101	5381	3,143.30	2,009
MOABU	ACTUALS	6972	101	5381	705.99	2,009
MOABU	ACTUALS	6973	101	5381	4,910.60	2,009
MOABU	ACTUALS	6022	101	5382	0.00	2,009

2009 CSP IGC's All Units

Unit	Ledger	Acct	Fund	DeptID	Sum Total Amt	Year
MOABU	ACTUALS	6026	101	5382	309.40	2,009
MOABU	ACTUALS	6029	101	5382	0.96	2,009
MOABU	ACTUALS	6031	101	5382	772.77	2,009
MOABU	ACTUALS	6037	101	5382	652.88	2,009
MOABU	ACTUALS	6048	101	5382	67.26	2,009
MOABU	ACTUALS	6061	101	5382	90.78	2,009
MOABU	ACTUALS	6064	101	5382	235.32	2,009
MOABU	ACTUALS	6080	101	5382	1,934.03	2,009
MOABU	ACTUALS	6081	101	5382	261.74	2,009
MOABU	ACTUALS	6088	101	5382	493.95	2,009
MOABU	ACTUALS	6089	101	5382	712.25	2,009
MOABU	ACTUALS	6091	101	5382	351.85	2,009
MOABU	ACTUALS	6094	101	5382	233.81	2,009
MOABU	ACTUALS	6095	101	5382	3,350.43	2,009
MOABU	ACTUALS	6104	101	5382	243.38	2,009
MOABU	ACTUALS	6105	101	5382	294.39	2,009
MOABU	ACTUALS	6110	101	5382	3,176.18	2,009
MOABU	ACTUALS	6145	101	5382	1,532.92	2,009
MOABU	ACTUALS	6147	101	5382	1,285.12	2,009
MOABU	ACTUALS	6181	101	5382	180.92	2,009
MOABU	ACTUALS	6198	101	5382	386.40	2,009
MOABU	ACTUALS	6971	101	5382	366.42	2,009
MOABU	ACTUALS	6972	101	5382	117.65	2,009
MOABU	ACTUALS	6973	101	5382	572.49	2,009
MOABU	ACTUALS	6048	101	5383	269.10	2,009
MOABU	ACTUALS	6061	101	5383	363.24	2,009
MOABU	ACTUALS	6064	101	5383	941.20	2,009
MOABU	ACTUALS	6088	101	5383	1,975.77	2,009
MOABU	ACTUALS	6089	101	5383	2,848.95	2,009
MOABU	ACTUALS	6094	101	5383	935.21	2,009
MOABU	ACTUALS	6145	101	5383	3,842.15	2,009
MOABU	ACTUALS	6147	101	5383	3,209.09	2,009
MOABU	ACTUALS	6181	101	5383	723.62	2,009
MOABU	ACTUALS	6198	101	5383	1,545.58	2,009
MOABU	ACTUALS	6972	101	5383	470.65	2,009
MOABU	ACTUALS	6022	231	53919G	8.00	2,009
MOABU	ACTUALS	6061	231	53919G	8.00	2,009
MOABU	ACTUALS	6091	231	53919G	58.00	2,009
MOABU	ACTUALS	6095	231	53919G	182.00	2,009
MOABU	ACTUALS	6103	231	53919G	626.00	2,009
MOABU	ACTUALS	6105	231	53919G	92.00	2,009
MOABU	ACTUALS	6109	231	53919G	4.00	2,009
MOABU	ACTUALS	6110	231	53919G	192.00	2,009
MOABU	ACTUALS	6145	231	53938G	300.67	2,009
MOABU	ACTUALS	6147	231	53938G	340.87	2,009
MOABU	ACTUALS	6022	231	53939G	22.00	2,009
MOABU	ACTUALS	6061	231	53939G	24.00	2,009
MOABU	ACTUALS	6091	231	53939G	150.00	2,009
MOABU	ACTUALS	6095	231	53939G	484.00	2,009
MOABU	ACTUALS	6103	231	53939G	1,660.00	2,009
MOABU	ACTUALS	6104	231	53939G	248.00	2,009
MOABU	ACTUALS	6105	231	53939G	248.00	2,009

## 2009 CSP IGC's All Units

Unit	Ledger	Acct	Fund	DeptID	Sum Total Amt	Year
MOABU	ACTUALS	6109	231	53939G	14.00	2,009
MOABU	ACTUALS	6110	231	53939G	504.00	2,009
MOABU	ACTUALS	6145	231	53939G	303.71	2,009
MOABU	ACTUALS	6147	231	53939G	216.42	2,009
MOABU	ACTUALS	6181	231	53939G	376.00	2,009
MOABU	ACTUALS	6198	231	53939G	540.00	2,009
MOABU	ACTUALS	6145	231	53948G	333.29	2,009
MOABU	ACTUALS	6147	231	53948G	329.15	2,009
MOABU	ACTUALS	6022	231	53949G	8.00	2,009
MOABU	ACTUALS	6061	231	53949G	10.00	2,009
MOABU	ACTUALS	6085	231	53949G	300.00	2,009
MOABU	ACTUALS	6091	231	53949G	63.00	2,009
MOABU	ACTUALS	6095	231	53949G	204.00	2,009
MOABU	ACTUALS	6103	231	53949G	702.00	2,009
MOABU	ACTUALS	6104	231	53949G	124.00	2,009
MOABU	ACTUALS	6105	231	53949G	105.00	2,009
MOABU	ACTUALS	6109	231	53949G	6.00	2,009
MOABU	ACTUALS	6110	231	53949G	214.00	2,009
MOABU	ACTUALS	6145	231	53949G	349.56	2,009
MOABU	ACTUALS	6147	231	53949G	249.01	2,009
MOABU	ACTUALS	6181	231	53949G	188.00	2,009
MOABU	ACTUALS	6198	231	53949G	270.00	2,009
MOABU	ACTUALS	6103	231	53958G	0.60	2,009
MOABU	ACTUALS	6022	231	53959G	2.00	2,009
MOABU	ACTUALS	6061	231	53959G	2.00	2,009
MOABU	ACTUALS	6091	231	53959G	12.00	2,009
MOABU	ACTUALS	6095	231	53959G	38.00	2,009
MOABU	ACTUALS	6103	231	53959G	130.00	2,009
MOABU	ACTUALS	6105	231	53959G	19.00	2,009
MOABU	ACTUALS	6109	231	53959G	1.00	2,009
MOABU	ACTUALS	6110	231	53959G	38.00	2,009
MOABU	ACTUALS	6022	261	539710G	1.00	2,009
MOABU	ACTUALS	6091	261	539710G	21.00	2,009
MOABU	ACTUALS	6095	261	539710G	133.00	2,009
MOABU	ACTUALS	6103	261	539710G	482.00	2,009
MOABU	ACTUALS	6104	261	539710G	24.00	2,009
MOABU	ACTUALS	6105	261	539710G	57.00	2,009
MOABU	ACTUALS	6109	261	539710G	3.00	2,009
MOABU	ACTUALS	6110	261	539710G	155.00	2,009
MOABU	ACTUALS	6085	261	53979G	105.00	2,009
MOABU	ACTUALS	6145	231	53988G	5.82	2,009
MOABU	ACTUALS	6147	231	53988G	4.14	2,009
MOABU	ACTUALS	6091	231	53999G	2.00	2,009
MOABU	ACTUALS	6095	231	53999G	5.00	2,009
MOABU	ACTUALS	6103	231	53999G	19.00	2,009
MOABU	ACTUALS	6105	231	53999G	2.00	2,009
MOABU	ACTUALS	6110	231	53999G	5.00	2,009
MOABU	ACTUALS	6145	261	54630G	463.59	2,009
MOABU	ACTUALS	6147	261	54630G	330.26	2,009
MOABU	ACTUALS	6022	162	5470	65.00	2,009
MOABU	ACTUALS	6026	162	5470	1,135.75	2,009
MOABU	ACTUALS	6029	162	5470	0.16	2,009

2009 CSP IGC's All Units

Unit	Ledger	Acct	Fund	DeptID	Sum Total Amt	Year
MOABU	ACTUALS	6031	162	5470	2,836.75	2,009
MOABU	ACTUALS	6037	162	5470	3,468.35	2,009
MOABU	ACTUALS	6048	162	5470	2,018.08	2,009
MOABU	ACTUALS	6049	162	5470	12,772.47	2,009
MOABU	ACTUALS	6061	162	5470	2,724.09	2,009
MOABU	ACTUALS	6064	162	5470	7,059.02	2,009
MOABU	ACTUALS	6080	162	5470	14,280.58	2,009
MOABU	ACTUALS	6081	162	5470	960.76	2,009
MOABU	ACTUALS	6085	162	5470	945.03	2,009
MOABU	ACTUALS	6086	162	5470	259.46	2,009
MOABU	ACTUALS	6088	162	5470	14,818.38	2,009
MOABU	ACTUALS	6089	162	5470	21,367.15	2,009
MOABU	ACTUALS	6091	162	5470	1,868.99	2,009
MOABU	ACTUALS	6094	162	5470	7,014.16	2,009
MOABU	ACTUALS	6095	162	5470	7,460.17	2,009
MOABU	ACTUALS	6103	162	5470	7,911.73	2,009
MOABU	ACTUALS	6104	162	5470	2,327.10	2,009
MOABU	ACTUALS	6105	162	5470	3,040.05	2,009
MOABU	ACTUALS	6109	162	5470	5,437.18	2,009
MOABU	ACTUALS	6110	162	5470	9,475.25	2,009
MOABU	ACTUALS	6145	162	5470	10,299.44	2,009
MOABU	ACTUALS	6147	162	5470	8,376.05	2,009
MOABU	ACTUALS	6181	162	5470	5,427.04	2,009
MOABU	ACTUALS	6198	162	5470	11,591.90	2,009
MOABU	ACTUALS	6354	162	5470	16,500.00	2,009
MOABU	ACTUALS	6500	162	5470	16,620.35	2,009
MOABU	ACTUALS	6562	162	5470	15,719.00	2,009
MOABU	ACTUALS	6666	162	5470	44,240.33	2,009
MOABU	ACTUALS	6668	162	5470	16,634.19	2,009
MOABU	ACTUALS	6971	162	5470	1,946.61	2,009
MOABU	ACTUALS	6972	162	5470	3,529.91	2,009
MOABU	ACTUALS	6973	162	5470	3,041.11	2,009
MOABU	ACTUALS	6975	162	5470	3,330.42	2,009
MOABU	ACTUALS	6022	162	5471	0.00	2,009
MOABU	ACTUALS	6037	162	5471	1,112.40	2,009
MOABU	ACTUALS	6091	162	5471	599.43	2,009
MOABU	ACTUALS	6971	162	5471	624.31	2,009
MOABU	ACTUALS	6973	162	5471	975.36	2,009
MOABU	ACTUALS	6022	162	5473	0.00	2,009
MOABU	ACTUALS	6026	162	5473	480.51	2,009
MOABU	ACTUALS	6029	162	5473	0.03	2,009
MOABU	ACTUALS	6031	162	5473	1,200.16	2,009
MOABU	ACTUALS	6037	162	5473	1,317.87	2,009
MOABU	ACTUALS	6048	162	5473	1,076.32	2,009
MOABU	ACTUALS	6061	162	5473	1,452.85	2,009
MOABU	ACTUALS	6064	162	5473	3,764.84	2,009
MOABU	ACTUALS	6081	162	5473	406.46	2,009
MOABU	ACTUALS	6085	162	5473	241.81	2,009
MOABU	ACTUALS	6088	162	5473	7,903.18	2,009
MOABU	ACTUALS	6089	162	5473	11,395.83	2,009
MOABU	ACTUALS	6091	162	5473	710.17	2,009
MOABU	ACTUALS	6094	162	5473	3,740.86	2,009

2009 CSP IGC's All Units

Unit	Ledger	Acct	Fund	DeptID	Sum Total Amt	Year
MOABU	ACTUALS	6104	162	5473	2,337.11	2,009
MOABU	ACTUALS	6105	162	5473	512.02	2,009
MOABU	ACTUALS	6109	162	5473	10,456.13	2,009
MOABU	ACTUALS	6110	162	5473	4,575.95	2,009
MOABU	ACTUALS	6145	162	5473	4,814.20	2,009
MOABU	ACTUALS	6147	162	5473	4,214.15	2,009
MOABU	ACTUALS	6181	162	5473	2,894.45	2,009
MOABU	ACTUALS	6198	162	5473	6,182.35	2,009
MOABU	ACTUALS	6668	162	5473	104,944.17	2,009
MOABU	ACTUALS	6971	162	5473	739.69	2,009
MOABU	ACTUALS	6972	162	5473	1,882.61	2,009
MOABU	ACTUALS	6973	162	5473	1,155.56	2,009
MOABU	ACTUALS	6975	162	5473	22,351.36	2,009
MOABU	ACTUALS	6022	162	5474	0.00	2,009
MOABU	ACTUALS	6037	162	5474	5,037.31	2,009
MOABU	ACTUALS	6091	162	5474	2,714.46	2,009
MOABU	ACTUALS	6971	162	5474	2,827.16	2,009
MOABU	ACTUALS	6973	162	5474	4,416.83	2,009
MOABU	ACTUALS	6001	462	5626	2,882.89	2,009

IGC Expenditures Treated As Direct Costs

Unit	Ledger	Acct	Fund	DeptID	Sum Total	
					Amt	Year
MOABU	ACTUALS	6145	241	15223G	0.26	2,009
MOABU	ACTUALS	6147	241	15223G	0.42	2,009
MOABU	ACTUALS	6145	241	15233G	8.20	2,009
MOABU	ACTUALS	6147	241	15233G	16.74	2,009
MOABU	ACTUALS	6145	241	15234G	3.50	2,009
MOABU	ACTUALS	6147	241	15234G	7.42	2,009
MOABU	ACTUALS	6145	241	15235G	7.34	2,009
MOABU	ACTUALS	6147	241	15235G	14.55	2,009
MOABU	ACTUALS	6145	241	15236G	12.64	2,009
MOABU	ACTUALS	6147	241	15236G	25.27	2,009
MOABU	ACTUALS	6085	241	15237G	58.50	2,009
MOABU	ACTUALS	6145	241	15237G	45.36	2,009
MOABU	ACTUALS	6147	241	15237G	89.43	2,009
MOABU	ACTUALS	6085	241	15238G	1,909.47	2,009
MOABU	ACTUALS	6145	241	15238G	211.31	2,009
MOABU	ACTUALS	6147	241	15238G	422.16	2,009
MOABU	ACTUALS	6145	241	15239G	74.93	2,009
MOABU	ACTUALS	6147	241	15239G	145.65	2,009
MOABU	ACTUALS	6145	241	152408GA	7.01	2,009
MOABU	ACTUALS	6147	241	152408GA	11.91	2,009
MOABU	ACTUALS	6145	241	152409GA	4.12	2,009
MOABU	ACTUALS	6147	241	152409GA	9.50	2,009
MOABU	ACTUALS	6145	241	15244G	0.38	2,009
MOABU	ACTUALS	6147	241	15244G	0.76	2,009
MOABU	ACTUALS	6145	241	15246G	9.30	2,009
MOABU	ACTUALS	6147	241	15246G	18.72	2,009
MOABU	ACTUALS	6145	241	15247G	12.08	2,009
MOABU	ACTUALS	6147	241	15247G	23.70	2,009
MOABU	ACTUALS	6145	241	15248G	42.05	2,009
MOABU	ACTUALS	6147	241	15248G	84.70	2,009
MOABU	ACTUALS	6145	241	15253G	3.28	2,009
MOABU	ACTUALS	6147	241	15253G	6.59	2,009
MOABU	ACTUALS	6145	231	15267G	0.00	2,009
MOABU	ACTUALS	6147	231	15267G	0.00	2,009
MOABU	ACTUALS	6085	231	15268G	5,339.98	2,009
MOABU	ACTUALS	6145	231	15268G	1,587.73	2,009
MOABU	ACTUALS	6147	231	15268G	3,167.10	2,009
MOABU	ACTUALS	6085	231	15278G	98.00	2,009
MOABU	ACTUALS	6145	231	15278G	238.84	2,009
MOABU	ACTUALS	6147	231	15278G	492.10	2,009
MOABU	ACTUALS	6145	241	15296G	0.54	2,009
MOABU	ACTUALS	6147	241	15296G	1.16	2,009
MOABU	ACTUALS	6145	231	15308G	1.97	2,009
MOABU	ACTUALS	6147	231	15308G	3.98	2,009
MOABU	ACTUALS	6085	101	5105	20,454.68	2,009
MOABU	ACTUALS	6145	101	5105	9,701.12	2,009
MOABU	ACTUALS	6147	101	5105	8,385.66	2,009
MOABU	ACTUALS	6085	101	5118	2,520.43	2,009
MOABU	ACTUALS	6145	101	5118	890.60	2,009
MOABU	ACTUALS	6147	101	5118	905.29	2,009
MOABU	ACTUALS	6145	162	5119	268.89	2,009
MOABU	ACTUALS	6147	162	5119	273.19	2,009
MOABU	ACTUALS	6145	101	5210	0.00	2,009

IGC Expenditures Treated As Direct Costs

Unit	Ledger	Acct	Fund	DeptID	Sum Total	Year
					Amt	
MOABU	ACTUALS	6147	101	5210	0.00	2,009
MOABU	ACTUALS	6085	101	5355	45,444.73	2,009
MOABU	ACTUALS	6086	101	5355	570.80	2,009
MOABU	ACTUALS	6145	101	5355	8,522.56	2,009
MOABU	ACTUALS	6147	101	5355	7,197.07	2,009
MOABU	ACTUALS	6085	101	5364	546.75	2,009
MOABU	ACTUALS	6145	101	5364	21,495.33	2,009
MOABU	ACTUALS	6147	101	5364	18,619.63	2,009
MOABU	ACTUALS	6085	101	5371	3,914.46	2,009
MOABU	ACTUALS	6145	101	5371	20,050.90	2,009
MOABU	ACTUALS	6147	101	5371	17,137.68	2,009
MOABU	ACTUALS	6085	101	5372	8,550.06	2,009
MOABU	ACTUALS	6145	101	5372	14,364.67	2,009
MOABU	ACTUALS	6147	101	5372	12,349.93	2,009
MOABU	ACTUALS	6085	101	5373	22,075.15	2,009
MOABU	ACTUALS	6145	101	5373	8,071.74	2,009
MOABU	ACTUALS	6147	101	5373	6,860.12	2,009
MOABU	ACTUALS	6085	101	5381	92.60	2,009
MOABU	ACTUALS	6145	101	5381	5,815.84	2,009
MOABU	ACTUALS	6147	101	5381	4,891.29	2,009
MOABU	ACTUALS	6145	101	5382	1,532.92	2,009
MOABU	ACTUALS	6147	101	5382	1,285.12	2,009
MOABU	ACTUALS	6145	231	53938G	300.67	2,009
MOABU	ACTUALS	6147	231	53938G	340.87	2,009
MOABU	ACTUALS	6145	231	53948G	333.29	2,009
MOABU	ACTUALS	6147	231	53948G	329.15	2,009
MOABU	ACTUALS	6085	261	53979G	105.00	2,009
MOABU	ACTUALS	6145	231	53988G	5.82	2,009
MOABU	ACTUALS	6147	231	53988G	4.14	2,009
MOABU	ACTUALS	6001	461	5402	12,355.29	2,009
MOABU	ACTUALS	6001	401	5417	4,766.89	2,009
MOABU	ACTUALS	6001	461	5424	2,769.32	2,009
MOABU	ACTUALS	6001	461	5430	120.00	2,009
MOABU	ACTUALS	6001	461	5431	2,990.82	2,009
MOABU	ACTUALS	6145	261	54630G	463.59	2,009
MOABU	ACTUALS	6147	261	54630G	330.26	2,009
MOABU	ACTUALS	6085	162	5470	945.03	2,009
MOABU	ACTUALS	6086	162	5470	259.46	2,009
MOABU	ACTUALS	6145	162	5470	10,299.44	2,009
MOABU	ACTUALS	6147	162	5470	8,376.05	2,009
MOABU	ACTUALS	6085	162	5473	241.81	2,009
MOABU	ACTUALS	6145	162	5473	4,814.20	2,009
MOABU	ACTUALS	6147	162	5473	4,214.15	2,009
MOABU	ACTUALS	6085	106	5480	330.73	2,009
MOABU	ACTUALS	6145	106	5480	175.93	2,009
MOABU	ACTUALS	6147	106	5480	741.74	2,009
MOABU	ACTUALS	6001	461	5481	10,878.30	2,009
MOABU	ACTUALS	6001	461	5492	0.02	2,009
MOABU	ACTUALS	6001	461	5496	514.02	2,009
MOABU	ACTUALS	6001	461	5497	10,403.35	2,009
MOABU	ACTUALS	6001	461	5498	295,993.30	2,009
MOABU	ACTUALS	6085	161	5501	24,333.06	2,009
MOABU	ACTUALS	6086	161	5501	1,582.69	2,009

IGC Expenditures Treated As Direct Costs

Unit	Ledger	Acct	Fund	DeptID	Sum Total	Year
					Amt	
MOABU	ACTUALS	6145	161	5501	3,405.56	2,009
MOABU	ACTUALS	6147	161	5501	13,529.52	2,009
MOABU	ACTUALS	6085	161	5502	1,055.60	2,009
MOABU	ACTUALS	6145	161	5502	9,846.03	2,009
MOABU	ACTUALS	6147	161	5502	41,539.27	2,009
MOABU	ACTUALS	6001	161	5504	3,527.41	2,009
MOABU	ACTUALS	6085	161	5504	72.92	2,009
MOABU	ACTUALS	6086	161	5504	5,448.60	2,009
MOABU	ACTUALS	6145	161	5504	2,676.35	2,009
MOABU	ACTUALS	6147	161	5504	11,331.38	2,009
MOABU	ACTUALS	6001	161	5506	148.68	2,009
MOABU	ACTUALS	6085	161	5506	235.77	2,009
MOABU	ACTUALS	6145	161	5506	7,381.98	2,009
MOABU	ACTUALS	6147	161	5506	30,945.99	2,009
MOABU	ACTUALS	6085	161	5507	1,644.56	2,009
MOABU	ACTUALS	6145	161	5507	1,394.05	2,009
MOABU	ACTUALS	6147	161	5507	5,893.14	2,009
MOABU	ACTUALS	6085	161	5508	157.08	2,009
MOABU	ACTUALS	6145	161	5508	2,384.04	2,009
MOABU	ACTUALS	6147	181	5508	10,022.03	2,009
MOABU	ACTUALS	6085	161	5602	10,323.66	2,009
MOABU	ACTUALS	6145	161	5602	6,076.05	2,009
MOABU	ACTUALS	6147	161	5602	25,741.51	2,009
MOABU	ACTUALS	6085	161	5603	7,975.17	2,009
MOABU	ACTUALS	6145	161	5603	6,725.68	2,009
MOABU	ACTUALS	6147	161	5603	28,573.03	2,009
MOABU	ACTUALS	6085	161	5604	721.45	2,009
MOABU	ACTUALS	6145	161	5604	6,394.45	2,009
MOABU	ACTUALS	6147	161	5604	27,146.86	2,009
MOABU	ACTUALS	6001	462	5626	2,882.89	2,009

2009 Expend - GAAP - ICP Units  
Unallowable Costs

Unit	Ledger	Acct	Fund	DeptID	Sum Total Amt	Year
MOABU	ACTUALS	3815	241	1508G	12,879.10	2,009
MOABU	ACTUALS	3815	241	15232G	10,000.00	2,009
MOABU	ACTUALS	3815	241	15233G	6,976.13	2,009
MOABU	ACTUALS	3815	241	15235G	8,280.12	2,009
MOABU	ACTUALS	5201	241	15235G	145,902.00	2,009
MOABU	ACTUALS	3815	241	15237G	7,536.09	2,009
MOABU	ACTUALS	5201	241	15237G	165,822.00	2,009
MOABU	ACTUALS	5302	241	15237G	0.53	2,009
MOABU	ACTUALS	5605	241	15237G	244.43	2,009
MOABU	ACTUALS	3815	241	15238G	343,040.54	2,009
MOABU	ACTUALS	5605	241	15238G	116.40	2,009
MOABU	ACTUALS	5609	241	15238G	34.79	2,009
MOABU	ACTUALS	3111	241	15239G	273.00	2,009
MOABU	ACTUALS	3815	241	15239G	384,009.71	2,009
MOABU	ACTUALS	5604	241	15239G	597.13	2,009
MOABU	ACTUALS	3815	241	15241G	7,926.39	2,009
MOABU	ACTUALS	3815	241	15242G	0.00	2,009
MOABU	ACTUALS	3815	241	15243G	103,151.26	2,009
MOABU	ACTUALS	3815	241	15245G	0.00	2,009
MOABU	ACTUALS	3815	241	15246G	715,938.00	2,009
MOABU	ACTUALS	3815	241	15247G	47,674.00	2,009
MOABU	ACTUALS	3815	241	15248G	152,084.52	2,009
MOABU	ACTUALS	3815	241	15249G	382,700.66	2,009
MOABU	ACTUALS	5401	231	15268G	0.00	2,009
MOABU	ACTUALS	5402	231	15268G	12,983.73	2,009
MOABU	ACTUALS	5403	231	15268G	338,543.00	2,009
MOABU	ACTUALS	5411	231	15268G	14,411.02	2,009
MOABU	ACTUALS	5602	231	15268G	6,975.00	2,009
MOABU	ACTUALS	5603	231	15268G	23,309.95	2,009
MOABU	ACTUALS	5604	231	15268G	2,506.81	2,009
MOABU	ACTUALS	5605	231	15268G	116.40	2,009
MOABU	ACTUALS	5609	231	15268G	45,250.82	2,009
MOABU	ACTUALS	4105	241	15295G	70,000.00	2,009
MOABU	ACTUALS	4111	241	15295G	104,088.70	2,009
MOABU	ACTUALS	3815	241	1591G	92,862.21	2,009
MOABU	ACTUALS	5202	401	1619	2,064,877.79	2,009
MOABU	ACTUALS	5411	401	1619	20,713.42	2,009
MOABU	ACTUALS	5602	401	1619	5,225.66	2,009
MOABU	ACTUALS	5201	401	1620	645,396.37	2,009
MOABU	ACTUALS	5202	401	1620	487,000.00	2,009
MOABU	ACTUALS	5404	401	1620	0.00	2,009
MOABU	ACTUALS	5201	401	1621	0.00	2,009
MOABU	ACTUALS	5202	401	1621	979,963.00	2,009
MOABU	ACTUALS	5202	401	1622	124,960.00	2,009
MOABU	ACTUALS	5601	401	1622	16,893.00	2,009
MOABU	ACTUALS	5202	401	1623	340.00	2,009
MOABU	ACTUALS	5601	401	1623	0.00	2,009
MOABU	ACTUALS	5202	401	1633	5,552.59	2,009
MOABU	ACTUALS	5401	401	1633	11,804.02	2,009
MOABU	ACTUALS	5404	401	1633	10,096.74	2,009
MOABU	ACTUALS	5502	401	1633	12,250.00	2,009
MOABU	ACTUALS	3111	101	5105	1,069.02	2,009
MOABU	ACTUALS	3815	101	5105	19,376.65	2,009

2009 Expend - GAAP - ICP Units  
Unallowable Costs

Unit	Ledger	Acct	Fund	DeptID	Sum Total Amt	Year
MOABU	ACTUALS	5411	101	5105	26,373.47	2,009
MOABU	ACTUALS	5604	101	5105	1,087.59	2,009
MOABU	ACTUALS	5609	101	5105	1,752.80	2,009
MOABU	ACTUALS	6073	101	5105	42,823.76	2,009
MOABU	ACTUALS	6076	101	5105	0.00	2,009
MOABU	ACTUALS	3815	101	5107	1,173,500.00	2,009
MOABU	ACTUALS	3901	101	5108	500,000.00	2,009
MOABU	ACTUALS	3815	101	5109	510,300.54	2,009
MOABU	ACTUALS	3815	101	5118	6,000.00	2,009
MOABU	ACTUALS	4101	301	5120	105,000.00	2,009
MOABU	ACTUALS	4102	301	5120	232,812.50	2,009
MOABU	ACTUALS	4101	161	5121	1,490,809.39	2,009
MOABU	ACTUALS	4102	161	5121	1,089,077.36	2,009
MOABU	ACTUALS	4103	161	5121	826.78	2,009
MOABU	ACTUALS	4112	161	5121	4,999.00	2,009
MOABU	ACTUALS	4113	161	5121	2,466.07	2,009
MOABU	ACTUALS	4101	101	5122	116,125.00	2,009
MOABU	ACTUALS	4102	101	5122	55,523.60	2,009
MOABU	ACTUALS	4103	101	5122	45.03	2,009
MOABU	ACTUALS	3815	101	5123	224,503.81	2,009
MOABU	ACTUALS	3901	740	5142	22,057.00	2,009
MOABU	ACTUALS	5413	101	5355	0.00	2,009
MOABU	ACTUALS	5603	101	5355	3,005.56	2,009
MOABU	ACTUALS	5609	101	5355	0.00	2,009
MOABU	ACTUALS	6073	101	5355	3,132.70	2,009
MOABU	ACTUALS	3901	101	5364	33,911.48	2,009
MOABU	ACTUALS	5401	101	5364	1,130.00	2,009
MOABU	ACTUALS	5401	101	5371	0.00	2,009
MOABU	ACTUALS	5609	101	5371	3,812.00	2,009
MOABU	ACTUALS	5401	101	5372	1,563.98	2,009
MOABU	ACTUALS	5411	101	5373	587.39	2,009
MOABU	ACTUALS	5603	101	5373	643.53	2,009
MOABU	ACTUALS	5609	101	5373	594.42	2,009
MOABU	ACTUALS	5411	101	5382	30,202.46	2,009
MOABU	ACTUALS	5412	101	5382	1,761.15	2,009
MOABU	ACTUALS	5603	101	5382	1,265.99	2,009
MOABU	ACTUALS	5604	101	5382	25,419.48	2,009
MOABU	ACTUALS	5605	101	5382	1,603.44	2,009
MOABU	ACTUALS	3901	101	5383	35,000.00	2,009
MOABU	ACTUALS	5411	231	53918G	9,967.00	2,009
MOABU	ACTUALS	5609	231	53918G	481.19	2,009
MOABU	ACTUALS	5411	231	53948G	849.73	2,009
MOABU	ACTUALS	5605	231	53948G	88.75	2,009
MOABU	ACTUALS	5603	261	53979G	832.26	2,009
MOABU	ACTUALS	5301	461	5402	39,706.80	2,009
MOABU	ACTUALS	5302	461	5402	247,134.94	2,009
MOABU	ACTUALS	5401	461	5402	-865.11	2,009
MOABU	ACTUALS	5603	461	5402	30,134.00	2,009
MOABU	ACTUALS	5302	461	5424	38,884.35	2,009
MOABU	ACTUALS	5302	461	5430	37,686.54	2,009
MOABU	ACTUALS	3815	461	5431	456,000.00	2,009
MOABU	ACTUALS	5607	461	5435	18,104.50	2,009
MOABU	ACTUALS	5202	461	5436	72,200.23	2,009

2009 Expend - GAAP - ICP Units  
Unallowable Costs

Unit	Ledger	Acct	Fund	DeptID	Sum Total Amt	Year
MOABU	ACTUALS	5302	461	5436	49,720.03	2,009
MOABU	ACTUALS	5401	461	5436	81,168.00	2,009
MOABU	ACTUALS	5603	461	5436	32,629.45	2,009
MOABU	ACTUALS	5607	461	5436	3,399.05	2,009
MOABU	ACTUALS	3815	162	5470	29,500.00	2,009
MOABU	ACTUALS	5411	162	5470	1,206.88	2,009
MOABU	ACTUALS	5603	162	5470	912.05	2,009
MOABU	ACTUALS	5604	162	5470	23.20	2,009
MOABU	ACTUALS	5605	162	5470	399.29	2,009
MOABU	ACTUALS	4101	162	5471	202,492.31	2,009
MOABU	ACTUALS	4102	162	5471	159,322.99	2,009
MOABU	ACTUALS	4103	162	5471	1,847.65	2,009
MOABU	ACTUALS	3901	162	5474	1,422,471.94	2,009
MOABU	ACTUALS	5302	462	5478	2,632.84	2,009
MOABU	ACTUALS	5302	462	5479	4,820.00	2,009
MOABU	ACTUALS	3815	106	5480	92,728.00	2,009
MOABU	ACTUALS	3901	106	5480	200,337.00	2,009
MOABU	ACTUALS	5604	106	5480	195.50	2,009
MOABU	ACTUALS	5302	461	5481	35,000.00	2,009
MOABU	ACTUALS	5401	461	5481	865.11	2,009
MOABU	ACTUALS	5607	231	54826G	29,879.50	2,009
MOABU	ACTUALS	3815	241	54858G	5,000.00	2,009
MOABU	ACTUALS	3815	241	54869G	27,000.00	2,009
MOABU	ACTUALS	3901	461	5490	0.38	2,009
MOABU	ACTUALS	5302	461	5492	-36,989.51	2,009
MOABU	ACTUALS	5302	461	5497	185,990.38	2,009
MOABU	ACTUALS	3111	461	5498	45,424.03	2,009
MOABU	ACTUALS	5202	461	5498	3,614.77	2,009
MOABU	ACTUALS	5302	461	5498	-158,755.81	2,009
MOABU	ACTUALS	5603	461	5498	139,269.31	2,009
MOABU	ACTUALS	5607	461	5498	-3,399.05	2,009
MOABU	ACTUALS	5412	161	5501	2,520.75	2,009
MOABU	ACTUALS	6073	161	5501	3,957.37	2,009
MOABU	ACTUALS	5401	161	5502	11,650.00	2,009
MOABU	ACTUALS	5411	161	5502	3,416.10	2,009
MOABU	ACTUALS	5603	161	5502	22,806.97	2,009
MOABU	ACTUALS	3111	161	5504	1,040.00	2,009
MOABU	ACTUALS	5603	161	5504	231.95	2,009
MOABU	ACTUALS	5604	161	5504	1,275.35	2,009
MOABU	ACTUALS	5609	161	5504	0.00	2,009
MOABU	ACTUALS	6073	161	5504	3,814.56	2,009
MOABU	ACTUALS	5401	161	5506	30,701.00	2,009
MOABU	ACTUALS	5411	161	5506	1,372.15	2,009
MOABU	ACTUALS	5603	161	5506	13,974.63	2,009
MOABU	ACTUALS	5608	161	5506	36,539.00	2,009
MOABU	ACTUALS	5609	161	5506	139.99	2,009
MOABU	ACTUALS	5603	161	5508	534.00	2,009
MOABU	ACTUALS	6073	161	5508	2,526.17	2,009
MOABU	ACTUALS	5603	161	5602	758.95	2,009
MOABU	ACTUALS	5609	161	5602	140.00	2,009
MOABU	ACTUALS	6073	161	5602	333.69	2,009
MOABU	ACTUALS	5401	161	5603	0.00	2,009
MOABU	ACTUALS	5603	161	5603	373.27	2,009

2009 Expend - GAAP - ICP Units  
 Unallowable Costs

Unit	Ledger	Acct	Fund	DeptID	Sum Total Amt	Year
MOABU	ACTUALS	3901	161	5604	100,000.00	2,009
MOABU	ACTUALS	5603	161	5604	174.99	2,009
MOABU	ACTUALS	5604	161	5604	1,023.97	2,009
MOABU	ACTUALS	5605	161	5604	399.29	2,009
MOABU	ACTUALS	3815	101	5611	98,000.00	2,009
MOABU	ACTUALS	3818	101	5611	0.00	2,009
MOABU	ACTUALS	3815	161	5613	561,680.00	2,009
MOABU	ACTUALS	5302	462	5625	15,119.57	2,009
MOABU	ACTUALS	5202	462	5626	0.00	2,009
MOABU	ACTUALS	5301	462	5626	8,085.79	2,009
MOABU	ACTUALS	5302	462	5626	70,286.18	2,009
MOABU	ACTUALS	5609	462	5626	5,000.00	2,009
MOABU	ACTUALS	5301	462	5627	26,644.10	2,009
MOABU	ACTUALS	5302	462	5627	7,395.12	2,009
MOABU	ACTUALS	5401	462	5627	195,093.00	2,009
MOABU	ACTUALS	5202	462	5628	0.00	2,009
MOABU	ACTUALS	5609	462	5628	8,318.80	2,009

**INTRAGOVERNMENTAL CHARGES METHODOLOGIES**

**DEPARTMENT NAME:** Economic & Community Development

**CONTACT:** Linda Brooks

**DIVISION NAME:** Administration

**TELEPHONE:** 343-4359

**BUDGET UNIT (DEPTID NUMBER AND NAME):** 5105 OECD Administration

**APPROVED BY:** \_\_\_\_\_

(Signature of Department Director)

**SERVICES PROVIDED:**

Provides policy direction, administrative services, and overall management of departments, divisions, grants, contracts, and Municipal-owned facilities that are under the Office of Economic & Community Development so that policies, goals, and objectives of the Mayor and the Assembly are achieved.

**BUDGET PREPARATION METHODOLOGY:**

**Major functions:**

(1) Oversee operations of the Planning Department, Heritage Land Bank (HLB), Community Development, Port, Library, Museum, and Parks & Recreation (2) oversee contractors who manage major Municipal-owned facilities such as Sullivan Arena, Egan Convention Center, and Performing Arts Center (3) manage Municipal grants that are made to a variety of community, recreational, and arts non-profit groups (4) take the lead on a variety of economic development projects such as a new convention center, "E" Street corridor project, Mt. View Redevelopment, Glacier Winner Creek development in Girdwood, etc.

IGCs were calculated by estimating the amount of OECD staff time spent working in each of the four major functional areas. Staff costs associated with work done in function area one (1), overseeing various MOA departments and divisions, are to be allocated out to those departments and divisions. Costs are allocated out to the departments/divisions proportionately based on the size of each department/division's personnel budget.

Staff costs associated with work done in function area two (2), overseeing major facility contracts, are allocated out to the reserve funds and facility budgets for those facilities. Each facility's reserve fund revenues is the variable used to scale IGCs to each facility to the facility's ability to pay (i.e. Sullivan Arena should pay more in IGCs than McDonald Arena.)

No IGCs are charged for staff costs associated with work done in function area three (3).

Staff costs incurred in area four (4) are mostly absorbed by the Areawide General Fund, but 8.4% of staff costs are charged to the Capital Overhead reflecting upon work done by the office to advance the Municipality's capital projects.

**CHARGE-OUT METHODOLOGY:**

Allocating

Non-allocating

Combination

43.7% of Dept. ID 5105's costs will be allocated out per the above methodology. The remaining 56.3% is not to be allocated out and thus remain in the Areawide General Fund.

**REVISION DATE:** \_\_\_\_\_

**OMB DIRECTOR SIGNATURE:** \_\_\_\_\_

2006

**INTRAGOVERNMENTAL CHARGES METHODOLOGIES**

**DEPARTMENT NAME:** Economic & Community Development

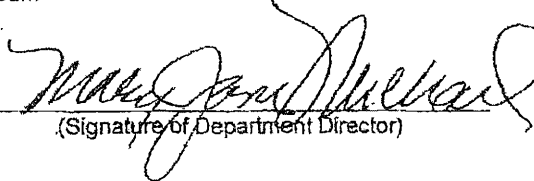
**CONTACT:** Lynette Kuykendall

**DIVISION NAME:** Museum of History and Art

**TELEPHONE:** 343-6177

**BUDGET UNIT (DEPTID NUMBER AND NAME):** 5210 Museum

**APPROVED BY:**

  
(Signature of Department Director)

**SERVICES PROVIDED:**

The Museum 1) coordinates the Art in Public Places projects for the Municipality and the Anchorage School District and 2) rents parking space in the Museum garage.

**BUDGET PREPARATION METHODOLOGY:**

Budgeted amounts are based on the following:

- 1) For Art in Public Places, the estimates are developed using prior year timesheets (by project) and construction schedules. This estimate is budgeted to the state grant reserve account as it is not known what level of effort will be expended for each project or what projects will be active during the year.
- 2) For the parking garage, costs are developed based on established fee schedules and number of spaces required. These costs are entered into the budget preparation allocation table as a "flat rate" charge.

**CHARGE-OUT METHODOLOGY:**

Allocating

Non-allocating

Combination

- 1) For Art in Public Places, records are kept on the time spent on each project. Actual costs are billed to each project utilizing journal entries for Municipality projects.
- 2) For garage parking, using departments are billed for required parking spaces utilizing a journal entry. Billing is computed at the established fee schedule for each vehicle.

**REVISION DATE:** \_\_\_\_\_

**OMB DIRECTOR SIGNATURE:** \_\_\_\_\_



**INTRAGOVERNMENTAL CHARGES METHODOLOGIES**

**DEPARTMENT NAME:** Anchorage Parks and Recreation

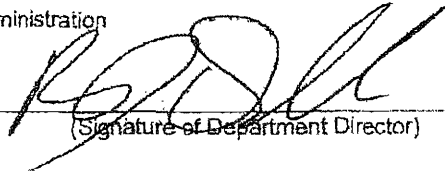
**CONTACT:** Elizabeth Stanley

**DIVISION NAME:** Administration

**TELEPHONE:** 343-4501

**BUDGET UNIT (DEPTID NUMBER AND NAME):** 5501 Administration

**APPROVED BY:**



(Signature of Department Director)

**SERVICES PROVIDED:**

Administrative services, such as personnel, payroll, budgeting, and financial reporting, are provided for Girdwood and Eagle River parks & recreation programs.

**BUDGET PREPARATION METHODOLOGY:**

Budgeted amounts are based on prior year actual costs, adjusted for any known changes in levels of service or cost of service. These estimates are entered into the budget preparation allocation table as a flat rate charge.

**CHARGE-OUT METHODOLOGY:**

Allocating

Non-allocating

Combination

Actual charges are accumulated as the job progresses. Costs are then charged to the requesting budget unit through a journal entry.

**REVISION DATE:** \_\_\_\_\_

**OMB DIRECTOR SIGNATURE:** \_\_\_\_\_

2006

**INTRAGOVERNMENTAL CHARGES METHODOLOGIES**

**DEPARTMENT NAME:** Anchorage Parks and Recreation

**CONTACT:** Elizabeth Stanley

**DIVISION NAME:** Parks

**TELEPHONE:** 343-4501

**BUDGET UNIT (DEPTID NUMBER AND NAME):** 5504 Park Planning

**APPROVED BY:** \_\_\_\_\_



(Signature of Department Director)

**SERVICES PROVIDED:**

Park planning services are provided to Girdwood and Eagle River parks and recreation programs.

Management services are provided for projects funded by grants and contributions.

**BUDGET PREPARATION METHODOLOGY:**

Budgeted amounts are based on estimated costs to provide services. These estimates are entered into the budget preparation allocation table as a flat rate charge.

**CHARGE-OUT METHODOLOGY:**     Allocating     Non-allocating     Combination

Actual charges are accumulated as the job progresses. Costs are then charged to the requesting budget unit through a journal entry.

**REVISION DATE:** \_\_\_\_\_

**OMB DIRECTOR SIGNATURE:** \_\_\_\_\_

1/2  
2006

**INTRAGOVERNMENTAL CHARGES METHODOLOGIES**

**DEPARTMENT NAME:** Anchorage Parks and Recreation

**CONTACT:** Elizabeth Stanley

**DIVISION NAME:** Parks

**TELEPHONE:** 343-4501

**BUDGET UNIT (DEPTID NUMBER AND NAME):** 5504 Park Planning

**APPROVED BY:** \_\_\_\_\_

(Signature of Department Director)

**SERVICES PROVIDED:**

Park planning services are provided to Capital Improvement Plan

Management services are provided for projects funded by State and Federal legislative grants, Municipal bonds and contributions.

**BUDGET PREPARATION METHODOLOGY:**

Budgeted amounts are based on estimated costs to provide services. These estimates are entered into the budget preparation allocation table as a flat rate charge.

**CHARGE-OUT METHODOLOGY:**

Allocating

Non-allocating

Combination

Actual charges are accumulated as the job progresses. Costs are then charged to the requesting budget unit through a journal entry.

**REVISION DATE:** \_\_\_\_\_

**OMB DIRECTOR SIGNATURE:** \_\_\_\_\_

2/2

2005

**INTRAGOVERNMENTAL CHARGES METHODOLOGIES**

**DEPARTMENT NAME:** Anchorage Parks and Recreation

**CONTACT:** Elizabeth Stanley

**DIVISION NAME:** Parks

**TELEPHONE:** 343-4501

**BUDGET UNIT (DEPTID NUMBER AND NAME):** 5508 Horticulture

**APPROVED BY:** \_\_\_\_\_



(Signature of Department Director)

**SERVICES PROVIDED:**

Landscaping services are provided to municipal agencies outside of Anchorage Parks & Recreation Service Area.

**BUDGET PREPARATION METHODOLOGY:**

Budgeted amounts are based on estimated costs, using prior year actual costs, and adjusting for any known changes in level of services or cost of service. These estimates are entered into the budget preparation allocation table as a flat rate charge.

**CHARGE-OUT METHODOLOGY:**

Allocating       Non-allocating       Combination

A "per unit" charge is computed for various horticulture services (acre of turf, tree maintenance, flower production, flower maintenance, hanging basket). Each requesting budget unit is charged by journal entry at year end for services received during year.

**REVISION DATE:** \_\_\_\_\_

**OMB DIRECTOR SIGNATURE:** \_\_\_\_\_

2006

**INTRAGOVERNMENTAL CHARGES METHODOLOGIES**

**DEPARTMENT NAME:** Office of Economic and Community Development

**CONTACT:** Carolyn Bloom

**DIVISION NAME:** Parks & Recreation

**TELEPHONE:** 343-4501

**BUDGET UNIT (DEPTID NUMBER AND NAME):** 5507 Volunteer Program

**APPROVED BY:**

*[Handwritten Signature]*

(Signature of Department Director)

**SERVICES PROVIDED:**

Volunteer Programs staff members assist Girdwood and Eagle River Parks and Recreation Service areas with their beautification and other volunteer programs.

**BUDGET PREPARATION METHODOLOGY:**

Budgeted amounts are based on prior year actual costs, adjusted for any known changes in levels of service or cost of service. These estimates are entered into the budget preparation allocation table as a flat rate charge.

**CHARGE-OUT METHODOLOGY:**

Allocating

Non-allocating

Combination

Actual charges are accumulated as the job progresses. Costs are then charged to the requesting budget unit through a journal entry.

**REVISION DATE:** \_\_\_\_\_

**OMB DIRECTOR SIGNATURE:** \_\_\_\_\_

*2004*

**INTRAGOVERNMENTAL CHARGES METHODOLOGIES**

**DEPARTMENT NAME:** Anchorage Parks and Recreation

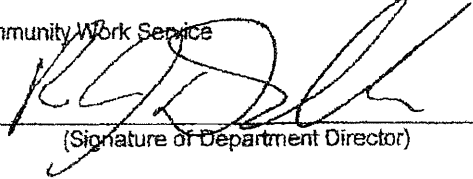
**CONTACT:** Elizabeth Stanley

**DIVISION NAME:** Parks

**TELEPHONE:** 343-4501

**BUDGET UNIT (DEPTID NUMBER AND NAME):** 5508 Community Work Service

**APPROVED BY:** \_\_\_\_\_



(Signature of Department Director)

**SERVICES PROVIDED:**

Community Work Service crews, with supervisors, are provided to municipal agencies outside of Anchorage Parks & Recreation Service Area.

**BUDGET PREPARATION METHODOLOGY:**

Budgeted amounts are based on estimated costs, using prior year actual costs, and adjusting for any known changes in level of services or cost of service. These estimates are entered into the budget preparation allocation table as a flat rate charge.

**CHARGE-OUT METHODOLOGY:**

Allocating

Non-allocating

Combination

Actual charges are accumulated as each job progresses. Costs are then charged to the requesting budget unit through a journal entry.

**REVISION DATE:** \_\_\_\_\_

**OMB DIRECTOR SIGNATURE:** \_\_\_\_\_

*2006*

**INTRAGOVERNMENTAL CHARGES METHODOLOGIES**

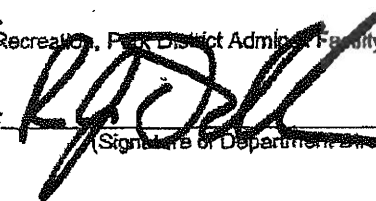
**DEPARTMENT NAME:** Anchorage Parks and Recreation

**CONTACT:** Elizabeth Stanley

**DIVISION NAME:** Recreation

**TELEPHONE:** 343-4501

**BUDGET UNIT (DEPTID NUMBER AND NAME):** <sup>5602</sup> 5602 Recreation, Park District Admin, Family Operaton

**APPROVED BY:**   
(Signature of Department Director)

**SERVICES PROVIDED:**

Park and Facility Rentals within the Anchorage Parks & Recreation Service Area.

**BUDGET PREPARATION METHODOLOGY:**

Budgeted amounts are based on estimated costs, using prior year actual costs, and adjusting for any known changes in level of services or cost of service. These estimates are entered into the budget preparation allocation table as a flat rate charge.

**CHARGE-OUT METHODOLOGY:**  Allocating  Non-allocating  Combination

Park and Facility Rental Rate per hour or day use.

**REVISION DATE:** \_\_\_\_\_

**OMB DIRECTOR SIGNATURE:** \_\_\_\_\_

*2006*

**INTRAGOVERNMENTAL CHARGES METHODOLOGIES**

**DEPARTMENT NAME:** Office of Economic and Community Development      **CONTACT:** Cindy Liggett

**DIVISION NAME:** Parks and Recreation      **TELEPHONE:** 343-4599

**BUDGET UNIT (DEPTID NUMBER AND NAME):** 5603 Recreation Facilities

**APPROVED BY:** *M. J. [Signature]*  
(Signature of Department Director)

**SERVICES PROVIDED:**

Responsible for the operation of recreation facilities and parks which include renting facilities and equipment to other Municipal agencies.

**BUDGET PREPARATION METHODOLOGY:**

Budgeted amounts are based on prior year actual costs, adjusted for any known changes in levels of service or cost of service. These estimates are entered into the budget preparation allocation table as a flat rate charge.

**CHARGE-OUT METHODOLOGY:**       Allocating       Non-allocating       Combination

Charges for scheduled uses are computed according to the current fee schedule, recorded on use permits and charged to the appropriate budget unit using a journal entry.

**REVISION DATE:** \_\_\_\_\_

**OMB DIRECTOR SIGNATURE:** \_\_\_\_\_

2504

**INTRAGOVERNMENTAL CHARGES METHODOLOGIES**

**DEPARTMENT NAME:** Anchorage Parks & Recreational

**CONTACT:** Elizabeth Stanley

**DIVISION NAME:** Recreation

**TELEPHONE:** 343-4501

**BUDGET UNIT (DEPTID NUMBER AND NAME):** 5604 Aquatics

**APPROVED BY:**



(Signature of Department Director)

**SERVICES PROVIDED:**

Aquatic services are provided to the Anchorage Fire Department to allowed AFD dive and emergency water rescue teams to conduct regular training in the swimming pools.

**BUDGET PREPARATION METHODOLOGY:**

Budgeted amounts are based on estimated costs, using prior year actual costs, and adjusting for any known changes in level of services or cost of service. These estimates are entered into the budget preparation allocation table as a flat rate charge.

Pool Rental Rate is \$100.00 per hour.  
AFD projected use is 10 hours for 2008

**CHARGE-OUT METHODOLOGY:**     Allocating     Non-allocating     Combination

A "per hour" charge is computed for swimming pool rentals. Each requesting budget unit is charged by journal entry at year end for services received during year.

**REVISION DATE:** \_\_\_\_\_

**OMB DIRECTOR SIGNATURE:** \_\_\_\_\_

*2006*