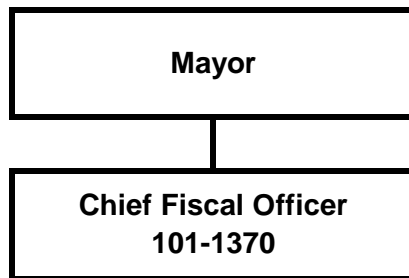


# Chief Fiscal Officer



# Chief Fiscal Officer

---

Lucinda Mahoney, Chief Fiscal Officer

343-6619

## Department Mission

---

Manage the financial activity of the Municipality of Anchorage to provide accurate and timely financial information for strategic planning, management, and decision making in support of the Mayor, elected officials, and the public

## Strategies: How the department meets its mission

---

- Providing supervision and guidance to the following Departments:
  - Finance
  - Information Technology
  - Purchasing
- Coordinating major financial transactions and initiatives between Municipal agencies and with outside agencies
- Providing financial information and analysis to support decision making by the Administration
- Responding to requests for financial information from the press, public, government agencies, and elected officials

## Divisions

---

- None, single department/function

# Chief Fiscal Officer

## Resource Plan

Divisions	2008 Actuals	2009 Revised	2010 Proposed	FY 10 v 09 % Chg
<b>Expenditures</b>				
Administration	\$ 642,419	\$ 493,044	\$ 480,737	-2.5%
<b>Total Direct Cost</b>	<b>\$ 642,419</b>	<b>\$ 493,044</b>	<b>\$ 480,737</b>	<b>-2.5%</b>
<b>Revenues</b>				
Administration	\$ (16,584)	\$ -	\$ -	
<b>Total Revenue</b>	<b>\$ (16,584)</b>	<b>\$ -</b>	<b>\$ -</b>	
<b>Cost of Services Provided:</b>				
By Other Departments	\$ 324,886	\$ 229,443	\$ 214,565	-6.5%
To Other Departments	(839,796)	(722,484)	(695,300)	-3.8%
<b>Total Cost</b>	<b>\$ (514,910)</b>	<b>\$ (493,041)</b>	<b>\$ (480,735)</b>	<b>-2.5%</b>
<b>Net Cost</b>	<b>\$ 110,925</b>	<b>\$ 3</b>	<b>\$ 2</b>	<b>-33.3%</b>

Expenditure by Category	2008 Actuals	2009 Revised	2010 Proposed	FY 10 v 09 % Chg
Salaries and Benefits	\$ 345,971	\$ 262,964	\$ 280,245	6.6%
Supplies	255,811	3,000	3,000	0.0%
Travel	5,847	5,000	5,000	0.0%
Contractual/Other Services	34,790	222,080	192,492	-13.3%
Equipment, Furnishings				
Debt Service/Depreciation				
<b>Total Direct Cost</b>	<b>\$ 642,419</b>	<b>\$ 493,044</b>	<b>\$ 480,737</b>	<b>-2.5%</b>

Positions	2008 Revised	2009 Revised	2010 Proposed
Full-Time	2	2	2
Part-Time	1		
Temporary/Seasonal			
<b>Total Positions</b>	<b>3</b>	<b>2</b>	<b>2</b>

## Chief Fiscal Officer

### Reconciliation from 2009 Revised Budget to 2010 Proposed Budget

	Direct Costs	Positions		
		FT	PT	T
<b>2009 Revised Budget</b>	\$ 493,044	2		
<b>2009 One-Time Requirements</b>				
- None	-			
<b>Transfers (to)/from Other Agencies</b>				
- None	-			
<b>Debt Service Changes</b>				
<b>Changes in Existing Programs/Funding for 2009</b>				
- Salary and benefits adjustments	17,304			
<b>2010 Continuation Level</b>	<b>\$ 510,348</b>	<b>2</b>	<b>-</b>	<b>-</b>
<b>Transfers (to)/from Other Agencies</b>				
- None	-			
<b>Debt Service Changes</b>				
<b>2010 Budget Changes</b>				
- Salary and benefits adjustments	(23)			
- Reduce professional service budget	(29,588)			
<b>2010 Proposed Budget</b>	<b>\$ 480,737</b>	<b>2</b>	<b>-</b>	<b>-</b>

# Chief Fiscal Officer

## Administration Division

---

**Division's Purpose**

- Manage the financial activity of the Municipality of Anchorage to provide accurate and timely financial information for strategic planning, management, and decision making in support of the Mayor, elected officials, and the public

Programs	Goals	FY 2009 Revised	FY 2010 Proposed
<b>Administration</b>			
<b>Division Direct Cost Total</b>		<b>\$ 493,044</b>	<b>\$ 480,737</b>

# Chief Fiscal Officer

## Chief Fiscal Officer

<b>Division Expenditures by Category</b>	<b>2008 Actuals</b>	<b>2009 Revised</b>	<b>2010 Proposed</b>	<b>FY 10 v 09 % Chg</b>
Salaries and Benefits	\$ 345,969	\$ 262,964	\$ 280,245	6.6%
Supplies	8,091	3,000	3,000	0.0%
Travel	5,887	5,000	5,000	0.0%
Contractual/Other Services	247,682	222,080	192,492	-13.3%
Equipment, Furnishings	34,790	-	-	0.0%
Debt Service/Depreciation				
<b>Total Direct Cost</b>	<b>\$ 642,419</b>	<b>\$ 493,044</b>	<b>480,737</b>	<b>-2.5%</b>

<b>Division Personnel Summary</b>	<b>2008 Revised</b>			<b>2008 Revised</b>			<b>2010 Proposed</b>		
	<b>FT</b>	<b>PT</b>	<b>T</b>	<b>FT</b>	<b>PT</b>	<b>T</b>	<b>FT</b>	<b>PT</b>	<b>T</b>
Administration	2	1		2			2		
<b>Total Personnel</b>	<b>2</b>	<b>1</b>		<b>2</b>			<b>2</b>		