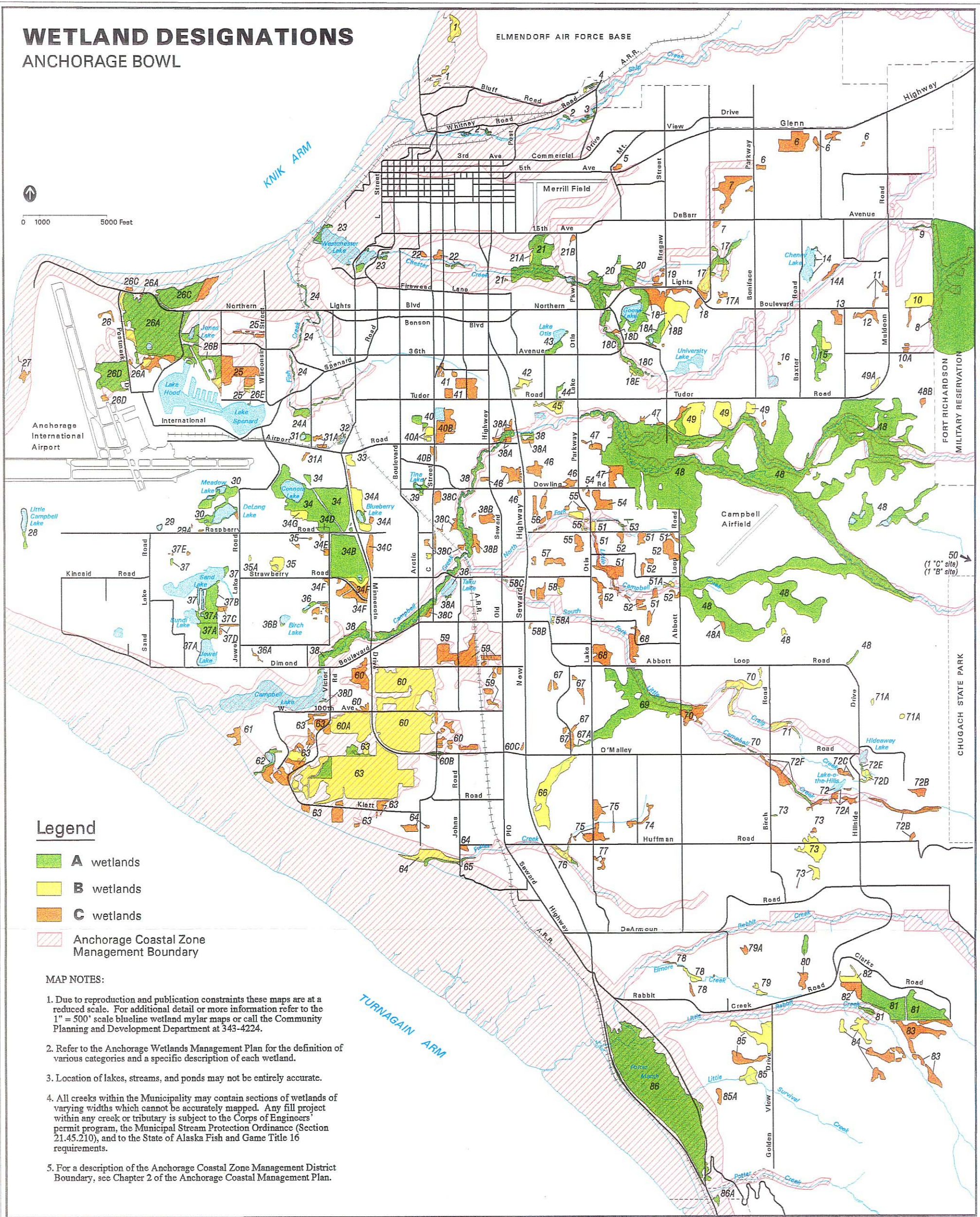


WETLAND DESIGNATIONS

ANCHORAGE BOWL

0 1000 5000 Feet



Legend

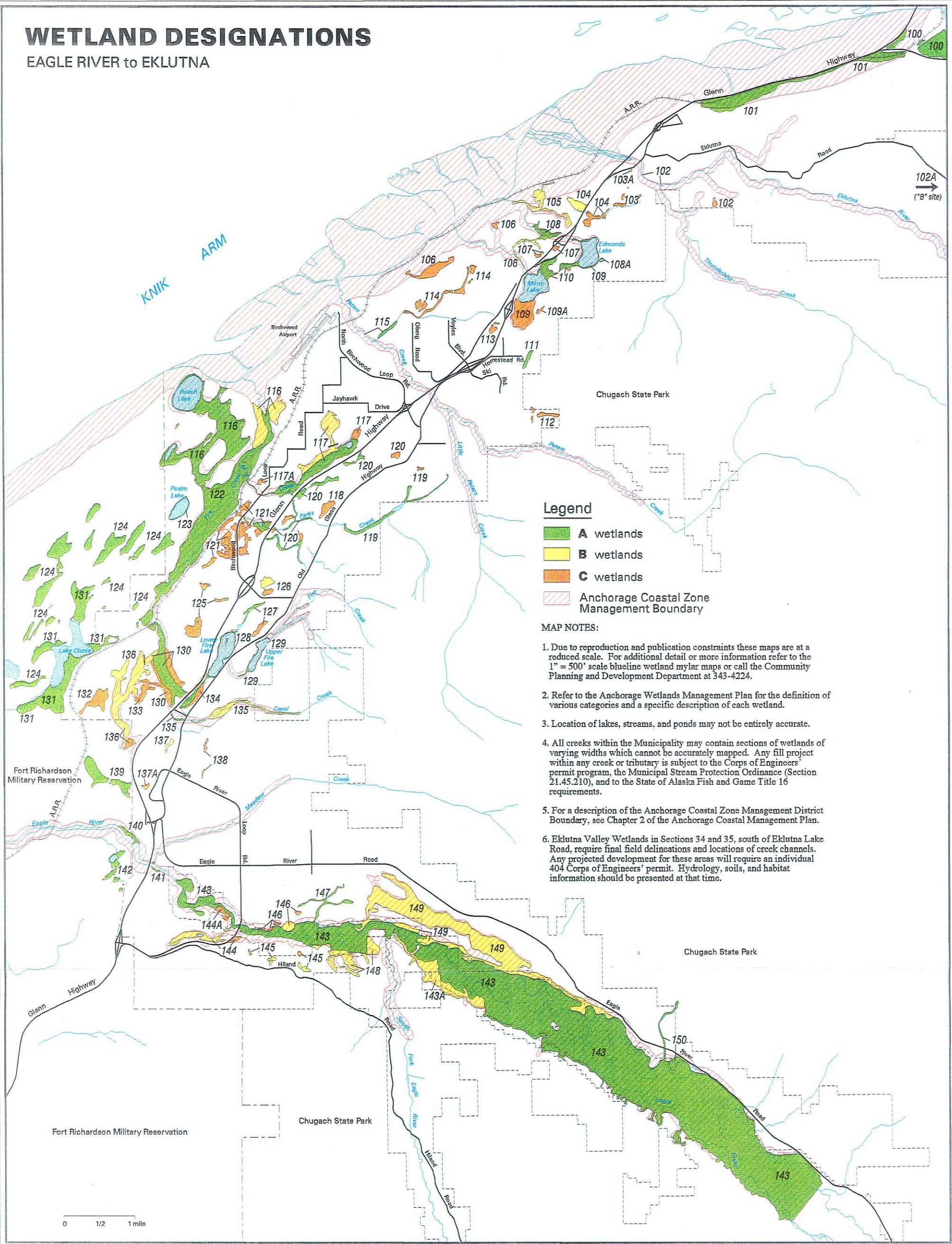
- A** wetlands
- B** wetlands
- C** wetlands
- Anchorage Coastal Zone Management Boundary

MAP NOTES:

1. Due to reproduction and publication constraints these maps are at a reduced scale. For additional detail or more information refer to the 1" = 500' scale blue-line wetland mylar maps or call the Community Planning and Development Department at 343-4224.
2. Refer to the Anchorage Wetlands Management Plan for the definition of various categories and a specific description of each wetland.
3. Location of lakes, streams, and ponds may not be entirely accurate.
4. All creeks within the Municipality may contain sections of wetlands of varying widths which cannot be accurately mapped. Any fill project within any creek or tributary is subject to the Corps of Engineers' permit program, the Municipal Stream Protection Ordinance (Section 21.45.210), and to the State of Alaska Fish and Game Title 16 requirements.
5. For a description of the Anchorage Coastal Zone Management District Boundary, see Chapter 2 of the Anchorage Coastal Management Plan.

WETLAND DESIGNATIONS

EAGLE RIVER to EKLUTNA



Legend

- A wetlands
- B wetlands
- C wetlands
- Anchorage Coastal Zone Management Boundary

MAP NOTES:

1. Due to reproduction and publication constraints these maps are at a reduced scale. For additional detail or more information refer to the 1" = 500' scale blue-line wetland mylar maps or call the Community Planning and Development Department at 343-4224.
2. Refer to the Anchorage Wetlands Management Plan for the definition of various categories and a specific description of each wetland.
3. Location of lakes, streams, and ponds may not be entirely accurate.
4. All creeks within the Municipality may contain sections of wetlands of varying widths which cannot be accurately mapped. Any fill project within any creek or tributary is subject to the Corps of Engineers' permit program, the Municipal Stream Protection Ordinance (Section 21.45.210), and to the State of Alaska Fish and Game Title 16 requirements.
5. For a description of the Anchorage Coastal Zone Management District Boundary, see Chapter 2 of the Anchorage Coastal Management Plan.
6. Eklutna Valley Wetlands in Sections 34 and 35, south of Eklutna Lake Road, require final field delineations and locations of creek channels. Any projected development for these areas will require an individual 404 Corps of Engineers' permit. Hydrology, soils, and habitat information should be presented at that time.

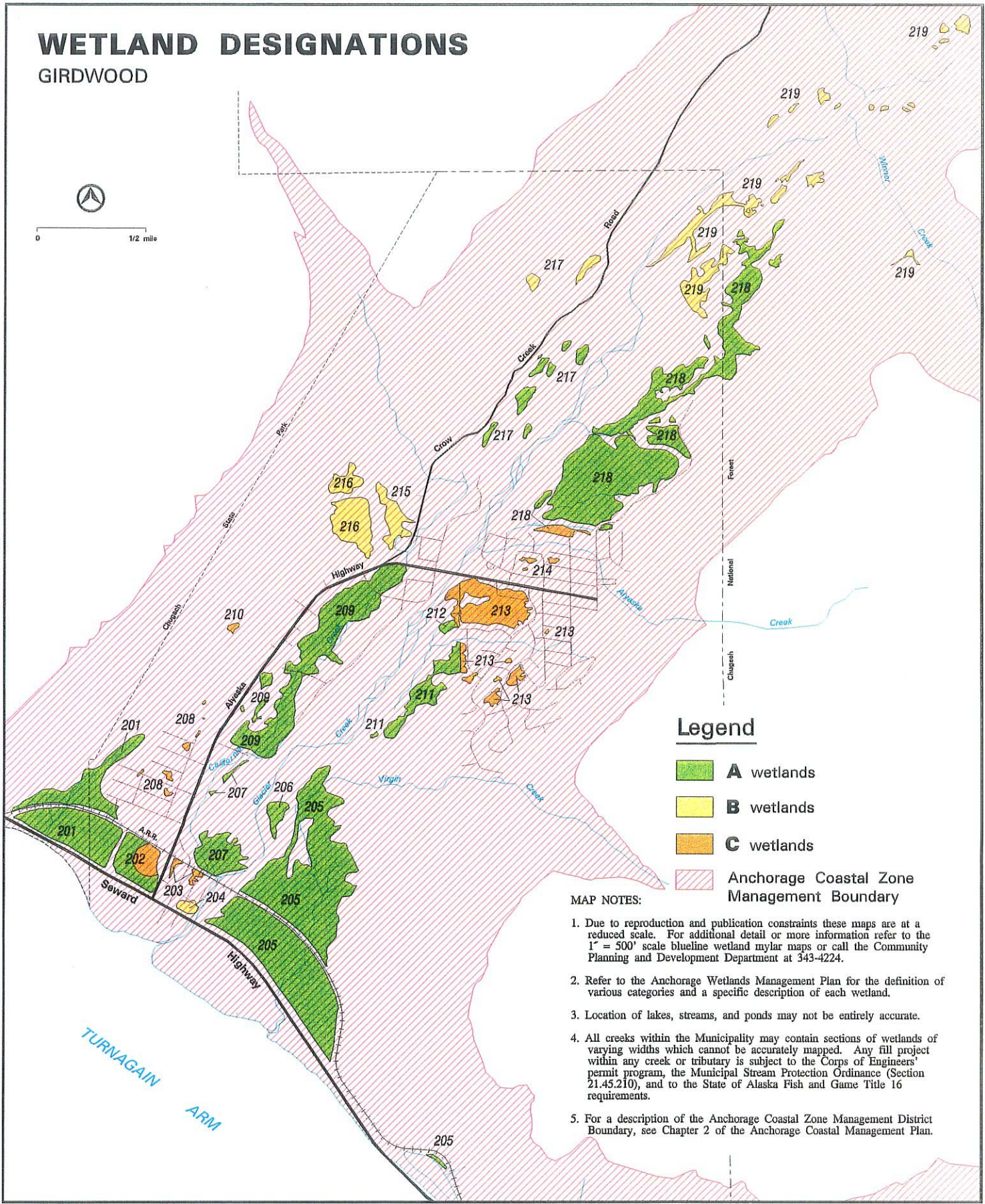
0 1/2 1 mile

WETLAND DESIGNATIONS

GIRDWOOD



0 1/2 mile



Legend

- A** wetlands
- B** wetlands
- C** wetlands
- Anchorage Coastal Zone Management Boundary

MAP NOTES:


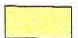


1. Due to reproduction and publication constraints these maps are at a reduced scale. For additional detail or more information refer to the 1" = 500' scale blue-line wetland mylar maps or call the Community Planning and Development Department at 343-4224.
2. Refer to the Anchorage Wetlands Management Plan for the definition of various categories and a specific description of each wetland.
3. Location of lakes, streams, and ponds may not be entirely accurate.
4. All creeks within the Municipality may contain sections of wetlands of varying widths which cannot be accurately mapped. Any fill project within any creek or tributary is subject to the Corps of Engineers' permit program, the Municipal Stream Protection Ordinance (Section 21.45.210), and to the State of Alaska Fish and Game Title 16 requirements.
5. For a description of the Anchorage Coastal Zone Management District Boundary, see Chapter 2 of the Anchorage Coastal Management Plan.

WETLAND DESIGNATIONS

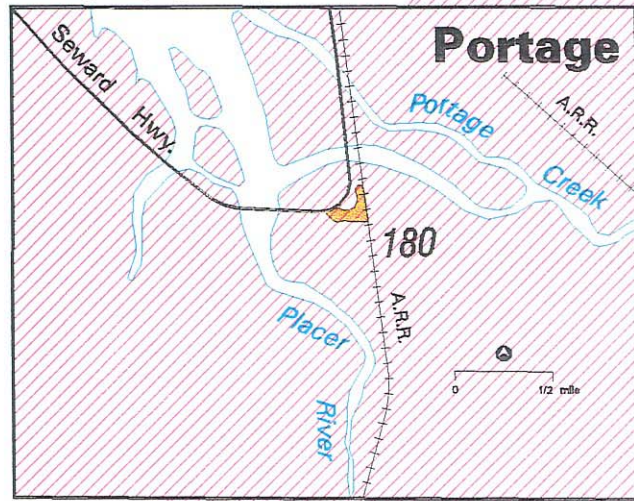
INDIAN, BIRD CREEK, and PORTAGE

MAP NOTE:
Most of Portage Valley within the Chugach National Forest boundary is wetlands. The lower third of Portage Valley is predominantly coastal wetlands.

Legend

-  **A** wetlands
-  **B** wetlands
-  **C** wetlands
-  Anchorage Coastal Zone Management Boundary

Chugach State Park



Indian

Indian Creek

160

161

170

Bird Creek

Bird Creek

Chugach State Park

A.R.R.

Seward

Highway

171

171

171

172-174

171

TURNAGAIN ARM

MAP NOTES:

1. Due to reproduction and publication constraints these maps are at a reduced scale. For additional detail or more information refer to the 1" = 500' scale blue-line wetland mylar maps or call the Community Planning and Development Department at 343-4224.
2. Refer to the Anchorage Wetlands Management Plan for the definition of various categories and a specific description of each wetland.
3. Location of lakes, streams, and ponds may not be entirely accurate.
4. All creeks within the Municipality may contain sections of wetlands of varying widths which cannot be accurately mapped. Any fill project within any creek or tributary is subject to the Corps of Engineers' permit program, the Municipal Stream Protection Ordinance (Section 21.45.210), and to the State of Alaska Fish and Game Title 16 requirements.
5. For a description of the Anchorage Coastal Zone Management District Boundary, see Chapter 2 of the Anchorage Coastal Management Plan.
6. These wetlands are not drawn to scale. Accurate wetlands boundaries can be identified on the 1" = 500' scale Wetland Maps. Additional wetland sites exist along the Seward Highway south of Bird Creek.

0 1/2 mile