

# Anchorage Government



**Table of Contents:**

General Government Revenues, Anchorage, 2002-2011 (Table) ..... 150

General Government Revenues, Anchorage, 2002-2011 (Graph) ..... 150

General Government Revenues, Municipality of Anchorage, 2002, 2006 & 2011 ..... 151

Total Government Expenditures, Municipality of Anchorage, 2002-2011 ..... 152

Total Per Capita Government Expenditures, Anchorage, 2002-2011 ..... 153

General Government Expenditures, Municipality of Anchorage, 2002, 2006 & 2011 ..... 153

Anchorage Municipal Per Capita Expenditures, 2002-2011 ..... 154

General Government Operating Budget & Personnel by Dept., Municipality of Anchorage, 2011 ..... 155

General Municipal Budget by Expense, Anchorage, 2011 ..... 156

General Municipal Budget by Department, Anchorage, 2011 ..... 156

General Obligation Bond Proposals, by Type, Municipality of Anchorage, 2005-2012 ..... 157

General Obligation Bond Proposals, Municipality of Anchorage, 2005-2012 ..... 157

Personnel by Department (FT, PT, Seasonal & Temp), Anchorage Municipality, 2011 ..... 158

Municipality of Anchorage, Full Time Equivalency Employees, 2003-2011 ..... 159

Municipality of Anchorage Employees by Bargaining Unit, 2012 (Chart) ..... 160

Municipality of Anchorage Employees by Bargaining Unit, 2012 (Graph) ..... 160

Average Annual Government Employment, Anchorage 2001-2011 ..... 161

% of Anchorage Total Employment That Is Government Employment, by Type, 2001-2011 ..... 161

% Government of Total Employment Anchorage, AK, King County, WA & U.S., 2011 ..... 162

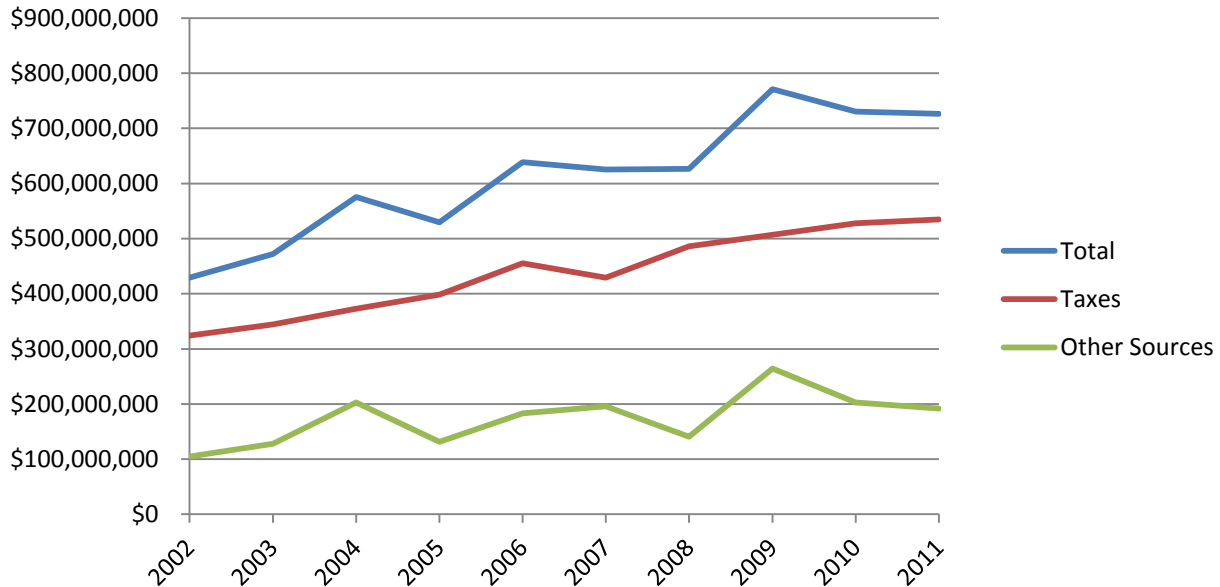
Average Monthly Wage for Government & Private Sectors, Anchorage 2011 .....	162
Anchorage State Government Employment by Agency, Anchorage & Other Cities, 2011 .....	163
State University & Government Employment, Anchorage vs. Other AK Cities, 2011 .....	164
Alaska State Government Employment, Anchorage & Other Cities by Agency, 2011 .....	165
Alaska Federal Employment Totals, Dec. 2011 .....	166
Assessed Value of Taxable Property, Anchorage, 1996-2011 .....	167
Area Wide Property Tax Rate (Excluding Service Area Taxes) Anchorage, 1996-2011 .....	167
Top Ten Anchorage Taxpayers Assessed Valuation, 2011 .....	168
Senior Citizen & Disabled Veteran Property Tax Exemption Summary, Anchorage, 2000-2011 .....	168
Alaska Property Tax Mill Rates, Major communities, 2012 .....	169
Alaska Sales Tax Rates, Major Communities, 2012 .....	170
Estimated Burden of Major Taxes for a Family of Three, Anchorage & U.S., 2010 .....	171
Est. State & Local taxes for a Family of Three w/\$50,000 Annual Income, Selected Cities, 2010 .....	172
Est. Burden of Major Taxes for a Family of 3 w/\$50,000 Annual H.H. Inc., Selected Cities 2010 .....	173
2010 Tax Comparison, Anchorage, AK vs. Los Angeles, CA, Family of 3 w/ \$75,000 H.H. Income .....	174
Est. State & Local Taxes for a Family of Three w/\$75,000 Annual Income, Selected Cities, 2010 .....	175
Federal Funds for State Government Alaska, 2001-2011 .....	175
Alaska Permanent Fund Dividend Annual Per Capita Payment, 1982-2011 .....	176
Historical Summary of Alaska Permanent Fund Dividend Applications and Payments, 1982-2011 .....	177
Permanent Fund Dividend Payments in Alaska, 1982-2011 .....	178
% of Registered Alaskan Voters Who Voted in the 2010 Alaska General Election, by Age.....	178
Alaskan Registered Voters by Age, March 2012.....	179
Alaska Voters by Gender & Party, 2010 General Election.....	179
Alaska 2010 General Election Voters by Ages & Party.....	180
Anchorage Registered Voters by Districts, Aug. 5, 2012 .....	181
April 2012 Registered Voters by Party & Election District.....	182
Highest & Lowest Voter Turnout by Precincts, Anchorage April 2012 Regular Election .....	183
Municipality of Anchorage Election Statistics, 2001-2011 (Table).....	184
Municipality of Anchorage Election Statistics, 2001-2011 (Chart).....	185

## General Government Revenues, Anchorage (In Millions of \$), 2002-2011

	Total	Taxes	Other Sources	State & Federal
2002	\$429,165,454	\$324,217,752	\$104,947,702	\$69,971,256
2003	\$472,058,886	\$344,146,857	\$127,912,029	\$56,013,938
2004	\$575,333,349	\$372,606,202	\$202,727,147	\$37,433,876
2005	\$529,686,478	\$398,135,665	\$131,550,813	\$49,406,608
2006	\$638,417,060	\$455,172,329	\$183,244,731	\$82,592,145
2007	\$625,345,689	\$429,372,924	\$195,972,765	\$102,611,734
2008	\$626,778,032	\$486,293,914	\$140,484,118	\$124,425,213
2009	\$771,152,338	\$506,700,676	\$264,451,662	\$172,943,841
2010	\$730,395,055	\$527,757,094	\$202,637,961	\$121,565,389
2011	\$726,283,136	\$534,724,811	\$191,558,325	\$119,711,543

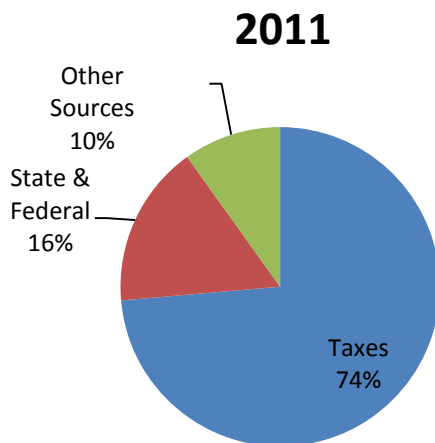
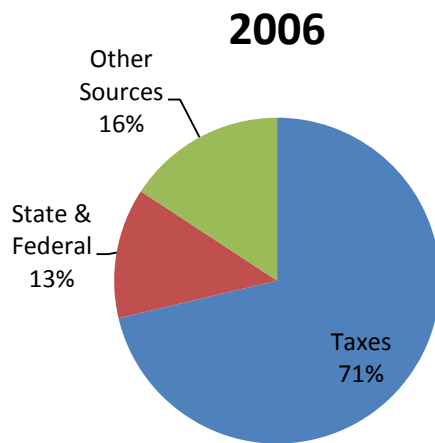
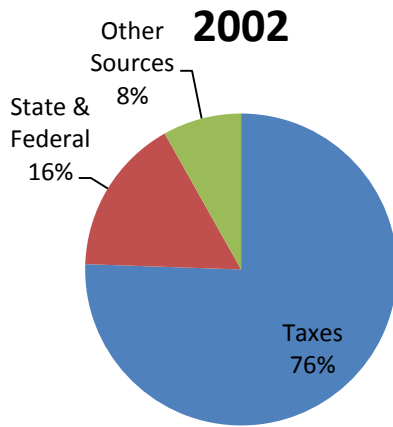
Source: Municipality of Anchorage, Department of Finance, Controller Division

## General Government Revenues Anchorage, 2002-2011



Source: Municipality of Anchorage, Department of Finance, Controller Division

# General Government Revenues, Municipality of Anchorage, 2002, 2006 & 2011



Source: Municipality of Anchorage, Department of Finance, Controller Division

## Total Government Expenditures, Municipality of Anchorage, 2002-2011

		Governmental Activities											
		General Government	Public Safety (Fire, Police, H&HS)	Public Services (E&CD, Trans, Works)	Education	Maint. & Op.	Interest						
2002		\$39,515,000	\$157,213,000	\$74,039,000	\$142,420,000	\$25,221,000	\$19,411,000						
2003		\$32,474,000	\$139,769,000	\$235,549,000	\$144,095,000	\$27,313,000	\$20,075,000						
2004		\$28,637,000	\$148,893,000	\$104,230,000	\$154,280,000	\$26,663,000	\$19,944,000						
2005		\$33,150,000	\$212,343,000	\$129,249,000	\$170,393,000	\$27,658,000	\$21,569,000						
2006		\$44,414,000	\$117,155,000	\$178,817,000	\$184,567,000	\$32,036,000	\$29,723,000						
2007		\$37,913,000	\$187,991,000	\$178,006,000	\$200,029,000	\$30,326,000	\$29,613,000						
2008		\$34,056,000	\$210,887,000	\$156,554,000	\$212,267,000	\$35,405,000	\$29,822,000						
2009		\$28,324,000	\$211,933,000	\$213,652,000	\$231,379,000	\$33,750,000	\$29,600,000						
2010		\$22,467,000	\$223,148,000	\$165,310,000	\$235,125,000	\$35,241,000	\$28,201,000						
2011		\$22,115,000	\$239,131,000	\$198,349,000	\$240,835,000	\$36,317,000	\$29,133,000						
		Business-type Activities											
		Water	Wastewater	Electric	Port	Muni. Airport	Solid Waste	Refuse	CSA	ACDA	ACPA	Parking Authority	
2002		\$27,145,000	\$20,128,000	\$77,972,000	\$6,940,000	\$2,191,000	\$14,096,000	\$5,711,000			\$1,705,000	\$4,243,000	
2003		\$27,353,000	\$21,223,000	\$83,462,000	\$7,395,000	\$2,040,000	\$12,884,000	\$5,669,000			\$1,793,000	\$4,620,000	
2004		\$31,739,000	\$24,453,000	\$93,048,000	\$8,166,000	\$2,152,000	\$13,087,000	\$5,902,000		\$4,731,000	\$1,726,000		
2005		\$35,841,000	\$26,703,000	\$101,351,000	\$9,676,000	\$2,570,000	\$13,614,000	\$5,939,000		\$5,304,000	\$1,935,000		
2006		\$37,216,000	\$28,188,000	\$96,915,000	\$10,076,000	\$2,984,000	\$14,251,000	\$6,304,000		\$6,533,000	\$1,987,000		
2007		\$41,529,000	\$32,326,000	\$82,572,000	\$10,793,000	\$3,005,000	\$17,927,000	\$6,584,000	\$1,255,000				
2008		\$39,389,000	\$31,804,000	\$90,760,000	\$11,533,000	\$3,230,000	\$15,556,000	\$7,368,000	\$1,315,000				
2009		\$38,485,000	\$30,491,000	\$105,532,000	\$11,105,000	\$3,279,000	\$16,326,000	\$7,816,000					
2010		\$38,759,000	\$32,916,000	\$122,332,000	\$10,518,000	\$3,326,000	\$16,177,000	\$8,176,000					
2011		\$39,755,000	\$33,988,000	\$126,041,000	\$10,491,000	\$4,094,000	\$17,233,000	\$8,262,000					
		Year				Total Expenditures				Year		Total Expenditures	
		2002				\$617,952,002				2007		\$859,871,007	
		2003				\$765,716,003				2008		\$879,948,008	
		2004				\$667,653,004				2009		\$961,674,009	
		2005				\$797,297,005				2010		\$941,698,010	
		2006				\$791,168,006				2011		\$1,005,746,011	

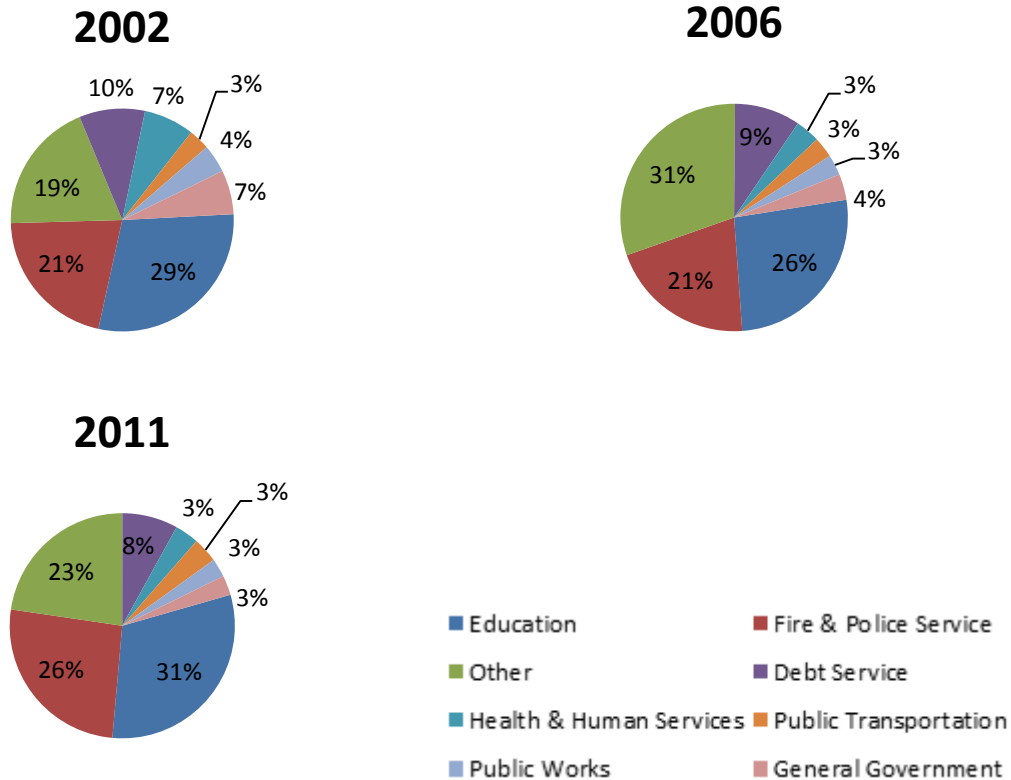
Source: Municipality of Anchorage, Department of Finance, Controller Division

## Total Per Capita Government Expenditures Anchorage, 2002-2011

	Total Expenditures	Population	Per Capita Expenditures	
			Actual	Inflation Adjusted in 2011 Dollars
2002	\$617,952,002	269,070	\$2,297	\$2,924
2003	\$765,716,003	274,003	\$2,795	\$3,464
2004	\$667,653,004	277,498	\$2,406	\$2,907
2005	\$797,297,005	278,241	\$2,865	\$3,360
2006	\$791,168,006	282,813	\$2,797	\$3,178
2007	\$859,871,007	283,823	\$3,030	\$3,367
2008	\$879,948,008	284,994	\$3,088	\$3,282
2009	\$961,674,009	290,588	\$3,309	\$3,477
2010	\$941,698,010	291,826	\$3,227	\$3,331
2011	\$1,005,746,011	296,197	\$3,396	\$3,396

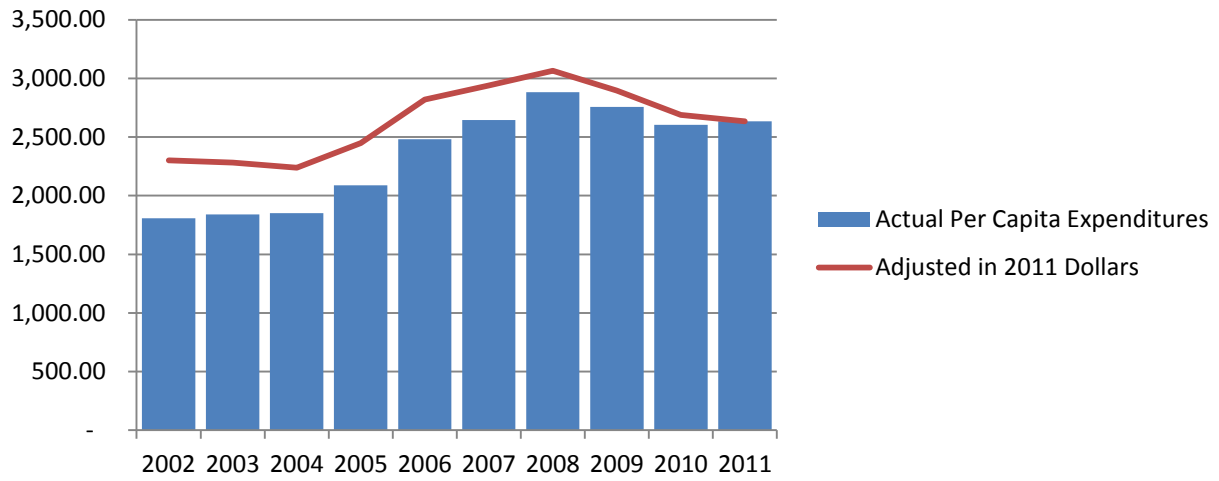
Source: Municipality of Anchorage, Department of Finance, Controller Division

## General Government Expenditures Municipality of Anchorage, 2002, 2006 & 2011



Source: Municipality of Anchorage, Department of Finance, Controller Division

## Anchorage Municipal Per Capita Expenditures 2002-2011



Source: Municipality of Anchorage, Department of Finance, Controller Division

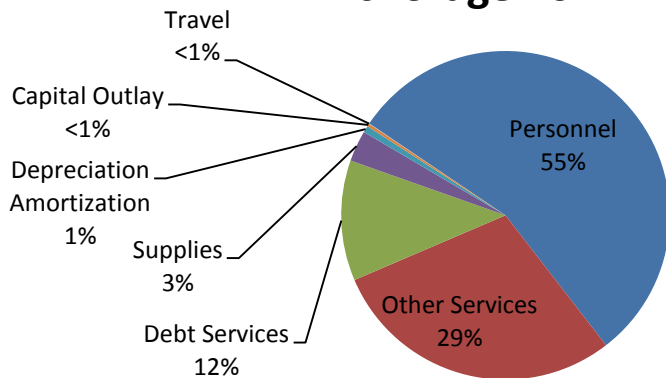
## General Government Operating Budget & Personnel, By Department Municipality of Anchorage, 2011 Approved Budget

Department	Operating Budget								Personnel				
	Personnel Services	Supplies	Travel	Other Services	Debt Service	Depreciation Amortization	Capital Outlay	Total Direct Costs	FT	PT	Seasonal	Temp	Total
Assembly	\$1,736,689	\$12,670	\$20,490	\$830,792	\$ -	\$ -	\$ -	\$2,600,641	23	-	-	-	23
Chief Fiscal Officer	\$294,874	\$3,000	\$5,000	\$182,492	-	-	-	\$485,366	2	-	-	-	2
Community Development	\$13,036,739	\$142,918	\$4,500	\$949,334	\$147,800	-	\$53,710	\$14,335,001	103	2	-	-	105
Employee Relations	\$1,971,320	\$7,350	\$10,230	\$250,475	-	-	\$17,400	\$2,256,775	16	4	-	-	20
Equal Rights Commission	\$663,821	\$1,800	\$1,900	\$8,810	-	-	-	\$676,331	5	2	-	-	7
Finance	\$10,136,817	\$65,985	\$15,100	\$1,446,576	\$759,114	-	\$21,500	\$12,445,092	84	16	-	-	100
Fire	\$57,469,155	\$2,232,700	\$20,000	\$17,199,466	\$4,494,741	-	\$362,700	\$81,778,762	389	2	-	-	391
Health and Human Services	\$5,839,448	\$218,470	\$25,660	\$6,091,582	\$313,327	-	\$48,004	\$12,536,491	54	7	1	-	62
Information Technology	\$8,641,744	\$99,124	\$4,314	\$3,165,523	\$522,950	\$2,890,240	\$26,600	\$15,350,495	58	17	-	-	75
Internal Audit	\$526,656	\$1,200	\$1,500	\$6,406	-	-	-	\$535,762	4	1	-	-	5
Library	\$6,381,584	\$60,556	\$500	\$1,235,030	-	-	\$65,095	\$7,742,765	64	29	-	-	93
Management and Budget	\$849,525	\$2,805	-	\$60,169	-	-	-	\$912,499	6	1	-	-	7
Office of the Mayor	\$993,634	\$6,500	\$17,000	\$1,165,405	-	-	-	\$2,182,539	7	1	-	-	8
Municipal Attorney	\$5,849,517	\$27,470	\$10,000	\$1,455,496	-	-	-	\$7,342,483	53	5	-	-	58
Municipal Manager	\$1,883,261	\$27,721	\$11,778	\$18,208,531	\$1,881,229	-	\$12,500	\$22,025,020	16	2	-	-	18
Parks and Recreation	\$9,982,202	\$715,081	-	\$6,132,427	\$2,912,225	-	\$179,980	\$19,921,915	69	50	162	33	314
Police	\$69,968,519	\$2,209,080	\$17,000	\$20,062,911	\$477,521	-	\$367,910	\$93,102,941	553	-	-	-	553
Public Transportation	\$14,019,910	\$3,428,746	\$4,670	\$3,315,017	\$482,766	-	-	\$21,251,109	145	-	-	-	145
Public Works	\$30,232,314	\$4,674,554	\$22,010	\$29,971,365	\$39,641,017	-	\$72,620	\$104,613,880	245	2	16	3	266
Purchasing	\$1,465,679	\$10,060	\$3,700	\$101,720	-	-	-	\$1,581,159	13	1	-	-	14
Real Estate	\$922,528	\$5,200	\$1,000	\$6,894,027	-	-	\$11,500	\$7,834,255	8	-	-	-	8
Convention Center Reserve	-	-	-	\$11,700,574	-	-	-	\$11,700,574					
<b>General Government Total</b>	<b>\$242,865,936</b>	<b>\$13,952,990</b>	<b>\$196,352</b>	<b>\$130,434,128</b>	<b>\$51,632,690</b>	<b>\$2,890,240</b>	<b>\$1,239,519</b>	<b>\$443,211,855</b>	<b>1,917</b>	<b>142</b>	<b>179</b>	<b>36</b>	<b>2,274</b>

Source: Municipality of Anchorage, Department of Finance, Controller Division



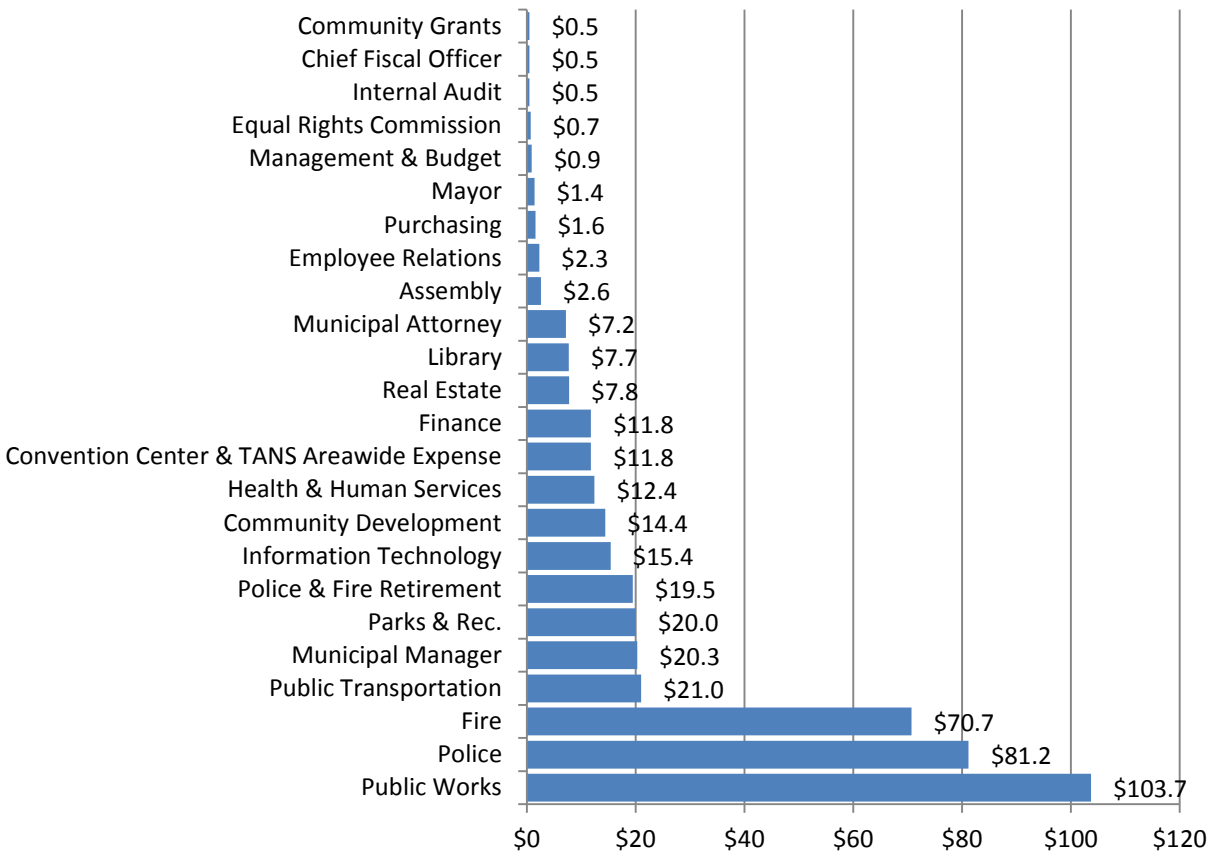
## General Municipal Budget by Expense Anchorage 2011



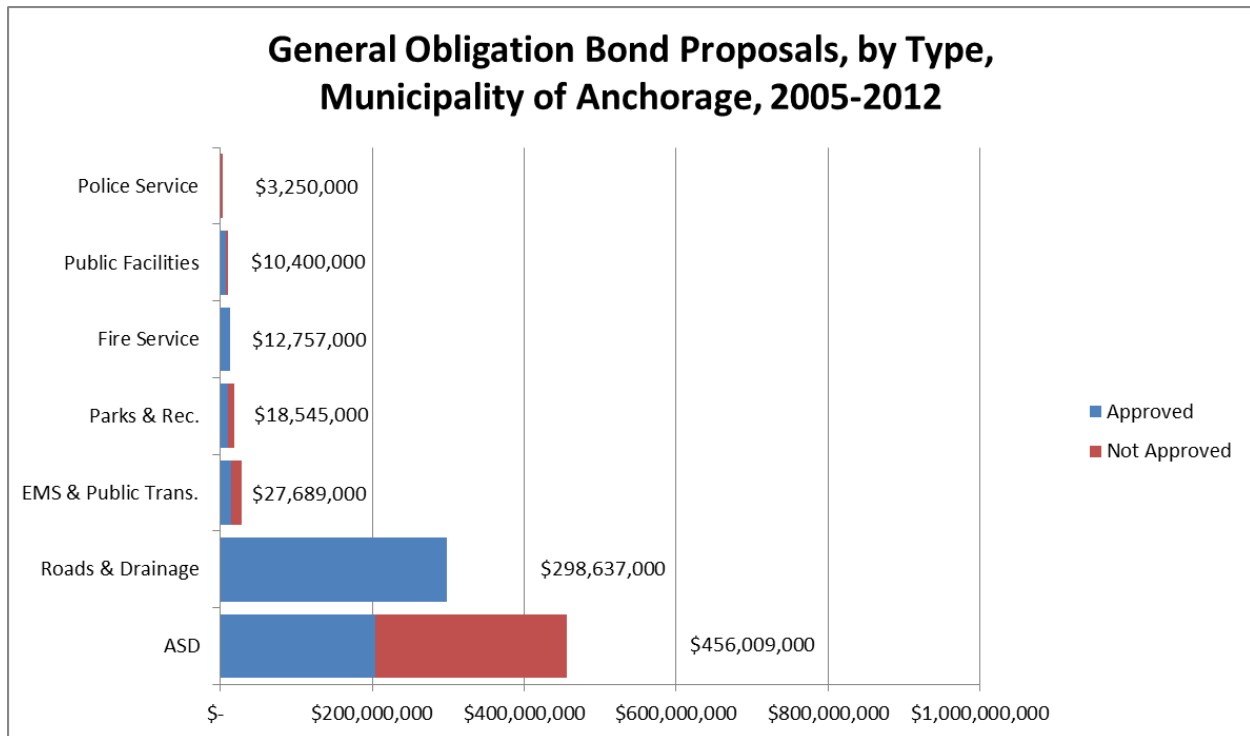
**Total Budget: \$435.7 Million**

Source: Municipality of Anchorage, Department of Finance, Controller Division

## General Municipal Budget by Department Anchorage, 2011 (in Millions of \$)

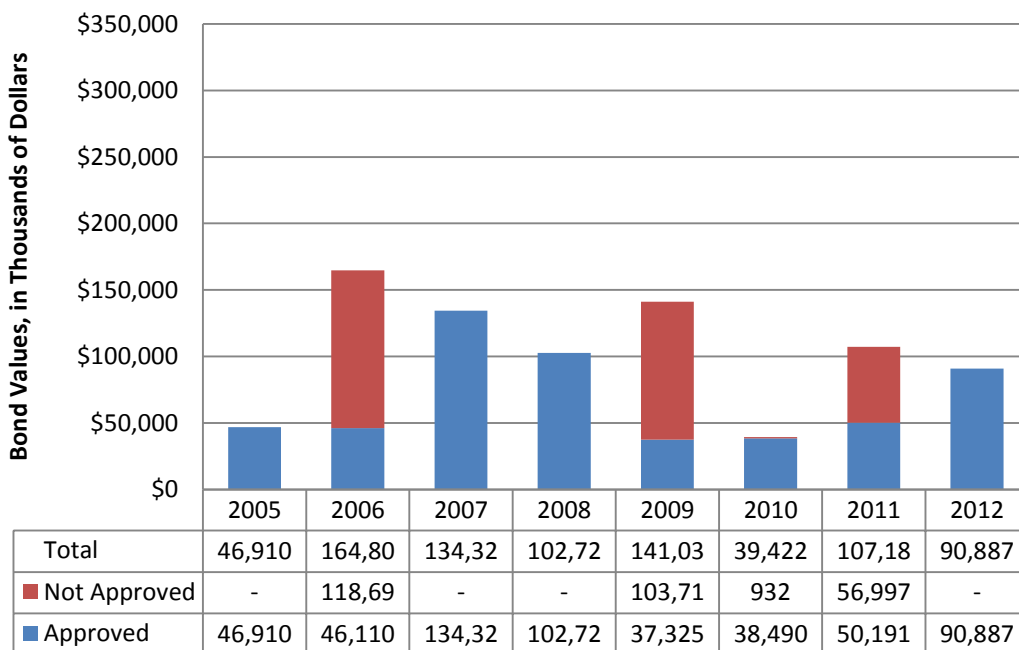


Source: Municipality of Anchorage, Department of Finance, Controller Division



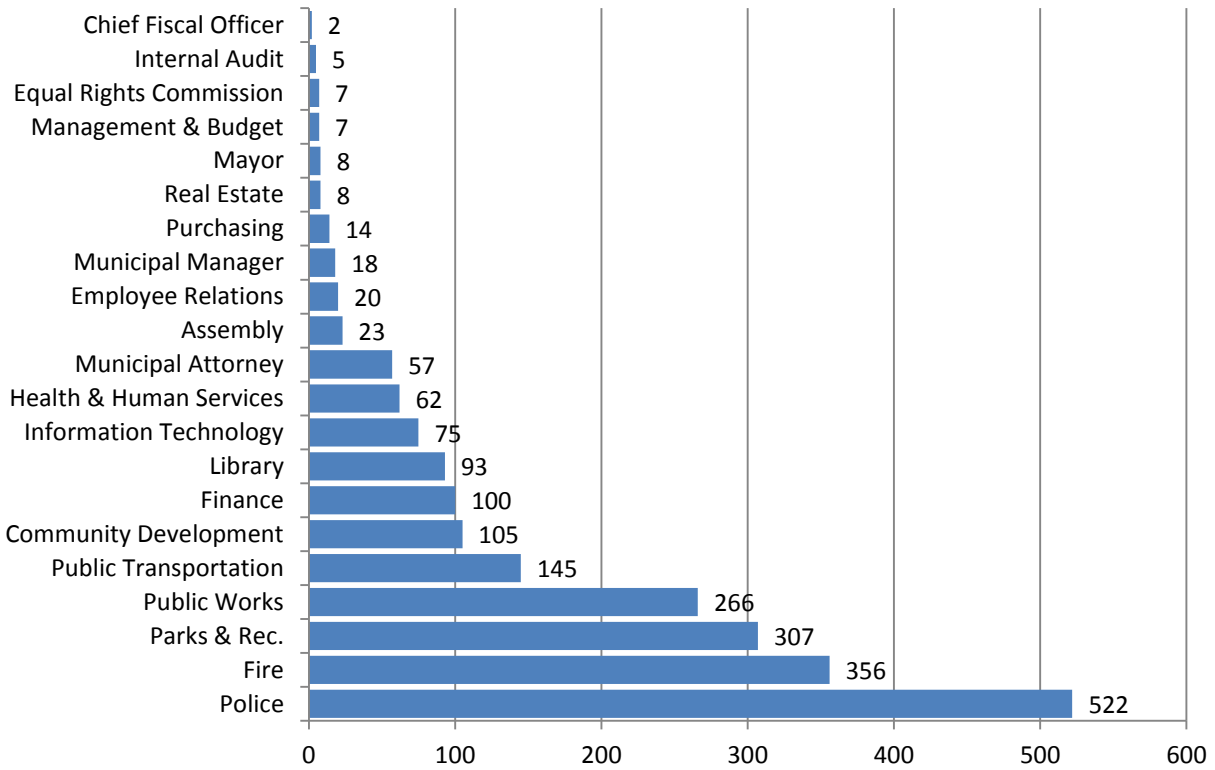
Source: Municipality of Anchorage Election Results

### General Obligation Bond Proposals, Municipality of Anchorage, 2005-2012 (In Thousands of Dollars)



Source: Municipality of Anchorage Election Results

## Personnel By Department (FT, PT, Seasonal & Temp) Anchorage Municipality, 2011



Source: Municipality of Anchorage, Department of Finance, Controller Division

### Municipality of Anchorage, Full Time Equivalency Employees, 2003-2011

<b>General Government</b>	2011	2010	2009	2008	2007	2006	2005	2004	2003
Fire Services	355	377	385	403	401	385	363	352	350
Police Services	522	537	572	552	532	521	517	484	475
Subtotal-Public Safety	877	914	967	955	933	906	880	836	825
General Government	299	324	365	345	369	337	331	328	341
Health & Human Services	128	141	148	141	166	145	159	157	161
Economic & Community Dev.	200	219	230	202	259	215	192	194	225
Public Transportation	152	158	158	159	158	156	153	141	140
Public Works	358	379	412	405	430	408	386	380	390
Subtotal-Other	1,137	1,221	1,313	1,252	1,382	1,261	1,221	1,200	1,257
Total General Government	2,014	2,135	2,280	2,207	2,315	2,167	2,101	2,036	2,082
<b>Enterprise Funds</b>									
Water	131	129	138	133	129	126	129	128	125
Wastewater	131	129	139	134	129	125	128	127	125
Electric	236	245	244	240	240	235	227	224	218
Port	21	22	22	21	25	21	20	21	19
Municipal Airport	9	8	9	9	10	10	10	10	10
Solid Waste	73	75	72	72	76	68	60	64	61
Refuse	21	21	20	20	20	21	20	19	19
Total-Enterprise Funds	622	629	644	629	629	606	594	593	577
Total	2,636	2,764	2,924	2,836	2,944	2,773	2,695	2,629	2,659

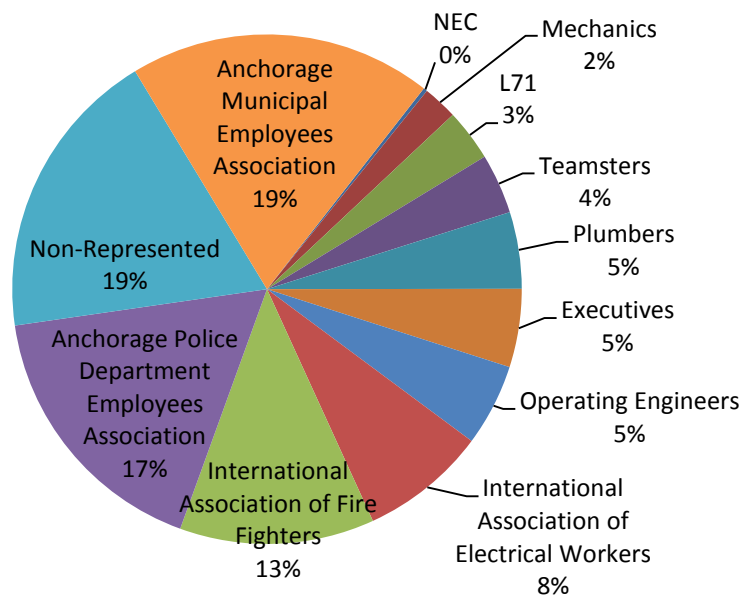
Source: Municipality of Anchorage, Department of Finance, Controller Division

## Municipality of Anchorage Employees by Bargaining Unit, 2012

Union	Total # by Union	Type of Status		
		Regular	Temp	Seasonal
Anchorage Municipal Employees Association	549	485	3	61
Anchorage Police Department Employees Association	491	491	0	0
Operating Engineers	149	140	0	9
Executives	142	140	2	0
International Association of Fire Fighters	353	353	0	0
International Association of Electrical Workers	229	214	15	0
Mechanics	63	63	0	0
L71	94	26	0	68
NEC	7	0	7	0
Non-Represented	532	460	72	0
Plumbers	139	137	2	0
Teamsters	109	109	0	0
<b>Totals:</b>	<b>2,857</b>	<b>2,618</b>	<b>101</b>	<b>138</b>

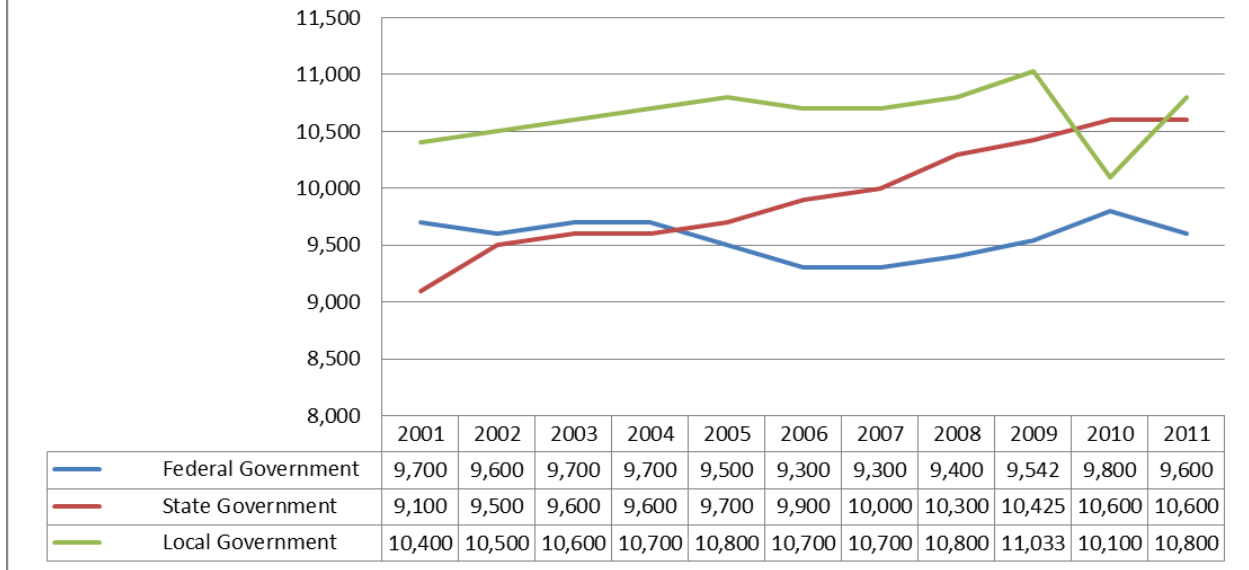
Source: Municipality of Anchorage, Employee Relations Department

## Municipality of Anchorage Employees by Bargaining Unit, 2012



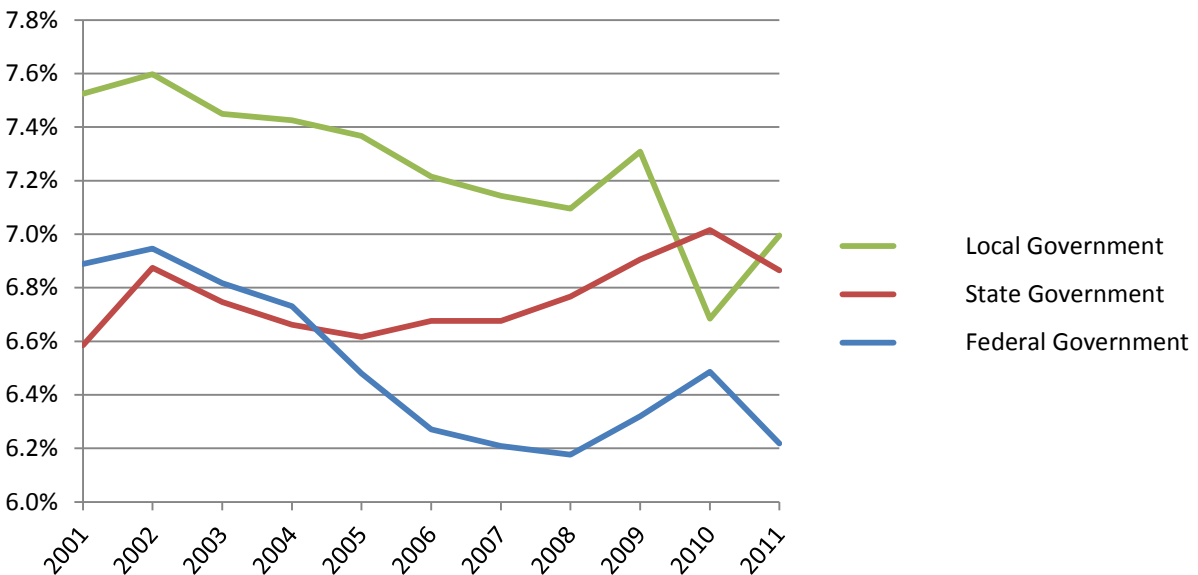
Source: Municipality of Anchorage, Employee Relations Department

## Average Annual Government Employment Anchorage 2001-2011



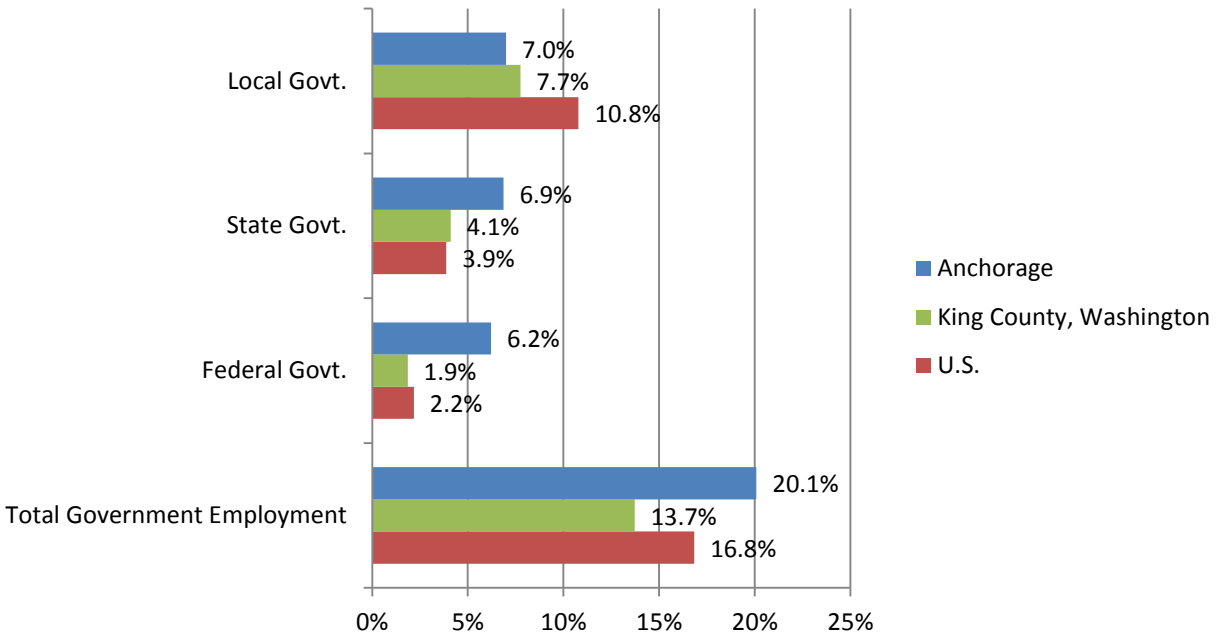
Source: Alaska Department of Labor, Research & Analysis

## % of Anchorage Total Employment That Is Government Employment, by Type, 2001-2011



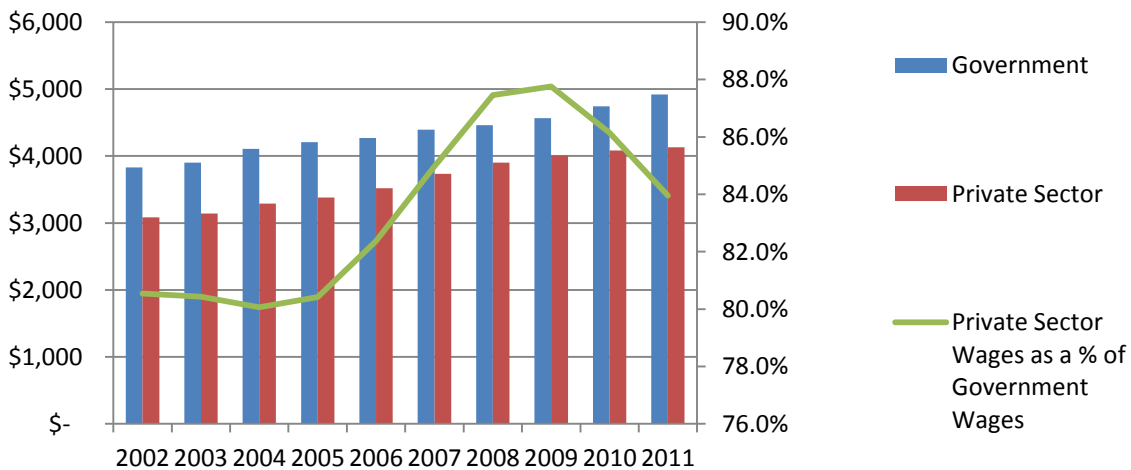
Source: Alaska Department of Labor, Research & Analysis

## % Government of Total Employment Anchorage, AK, King County, WA & U.S., 2011



Source: U.S. Bureau of Labor Statistics

## Average Monthly Wage for Government & Private Sectors Anchorage 2011



Source: U.S. Bureau of Labor Statistics

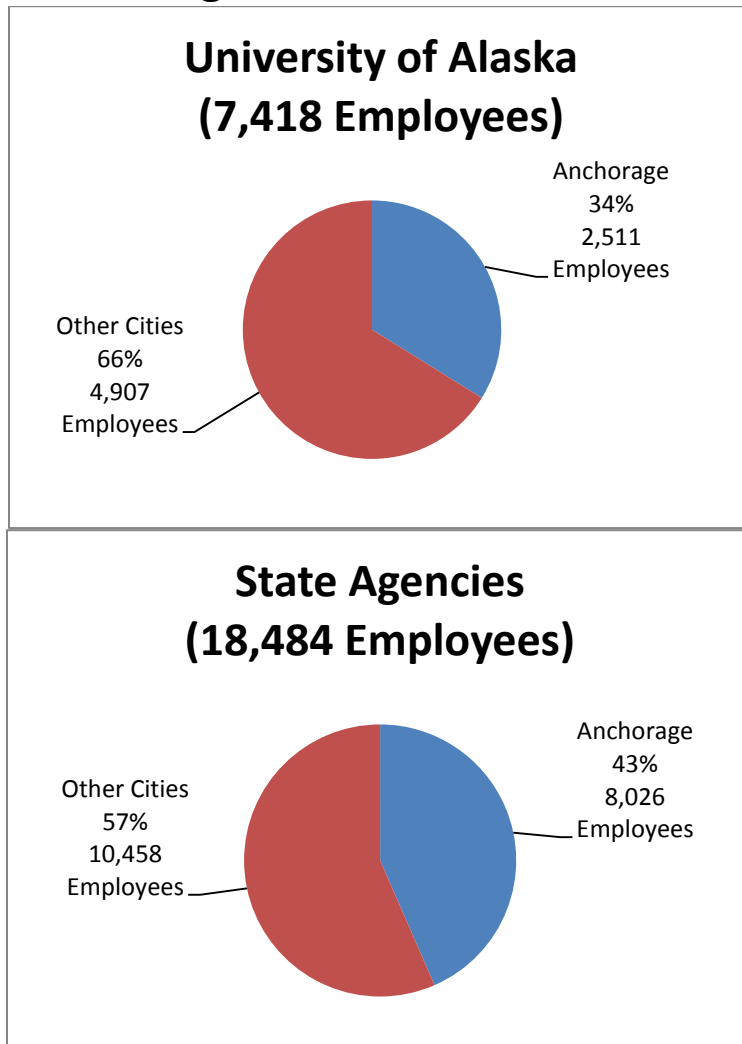
## Alaska State Government Employment by Agency Anchorage & Other Cities, 2011

	Alaska	Anchorage	Other Cities	% in Anchorage
LEGISLATIVE AUDIT	38	11	27	28.9%
TERMINATED EMPLOYEES	75	26	49	34.7%
OFFICE OF THE GOVERNOR	132	49	83	37.1%
MILITARY & VETERANS AFFAIR	282	234	48	83.0%
AK HOUSING FINANCE CORP	303	236	67	77.9%
EDUCATION	336	36	300	10.7%
LEGISLATIVE AFFAIRS AGENCY	377	62	315	16.4%
COMMUNITY & ECONOMIC DEVELOPMENT	455	249	206	54.7%
REVENUE	492	322	170	65.4%
ENVIRONMENTAL CONSERVATION	512	254	258	49.6%
LAW	529	303	226	57.3%
STATE OF ALASKA, NON-CLASSIFIED	583	209	374	35.8%
COURT SYSTEM	658	362	296	55.0%
AK RAILROAD CORPORATION	733	733	0	100.0%
PUBLIC SAFETY	865	295	570	34.1%
LABOR & WORKFORCE DEVELOPMENT	895	325	570	36.3%
NATURAL RESOURCES	917	467	450	50.9%
ADMINISTRATION	1,019	384	635	37.7%
FISH & GAME	1,190	290	900	24.4%
CORRECTIONS	1,440	546	894	37.9%
UNIVERSITY OF ALASKA, NON-CLASSIFIED	1,668	534	1,134	32.0%
TRANSPORTATION & PUBLIC FACILITIES	3,261	964	2,297	29.6%
HEALTH & SOCIAL SERVICES	3,402	1,679	1,723	49.4%
UNIVERSITY OF ALASKA	5,750	1,977	3,773	34.4%
<b>TOTAL</b>	<b>25,912</b>	<b>10,547</b>	<b>15,365</b>	<b>40.7%</b>

Source: Alaska Department of Labor, Research & Analysis

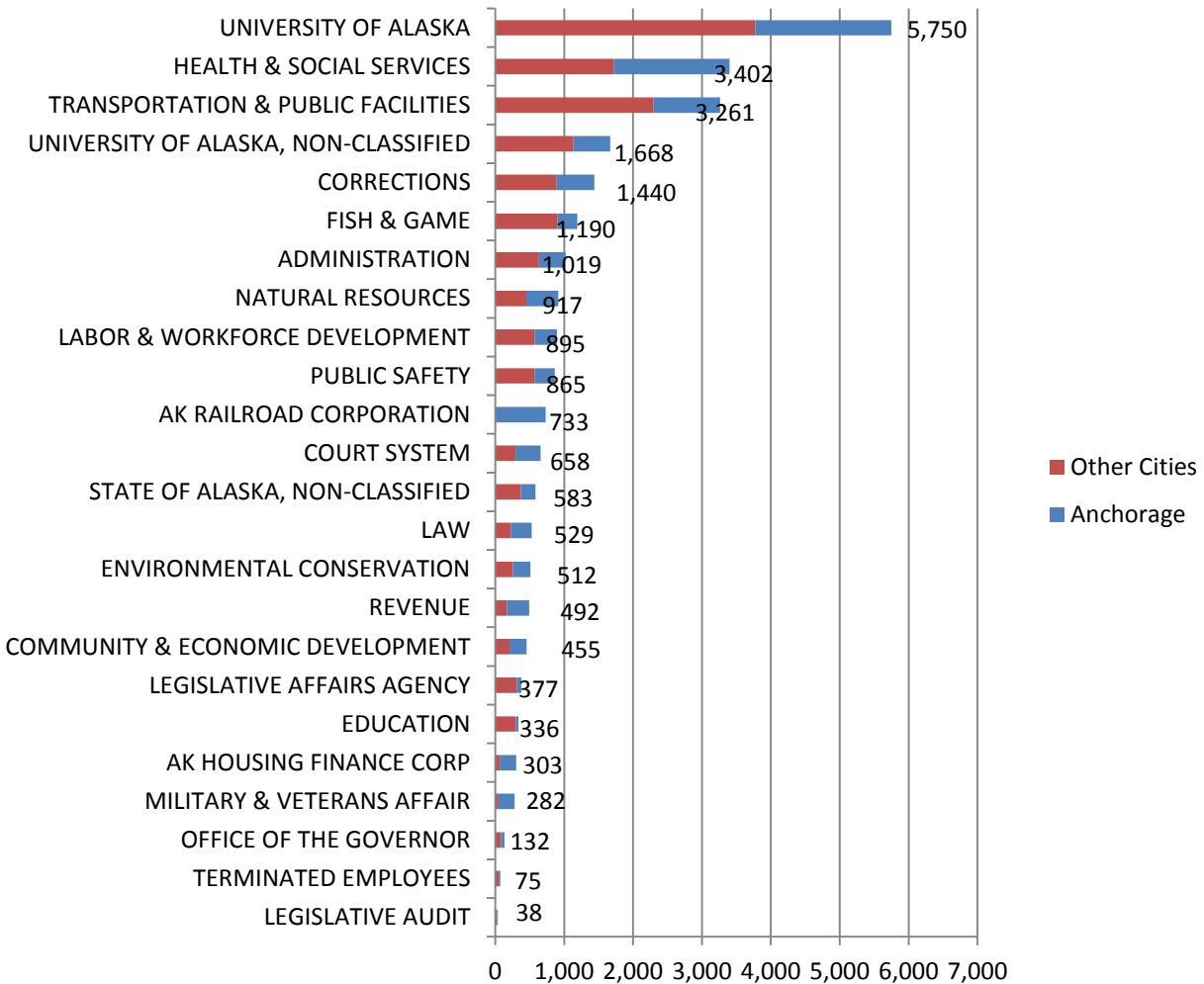


## State University & Government Employment Anchorage vs Other AK Cities, 2011



Source: Alaska Department of Labor, Research & Analysis

## Alaska State Government Employment Anchorage & Other Cities by Agency, 2011



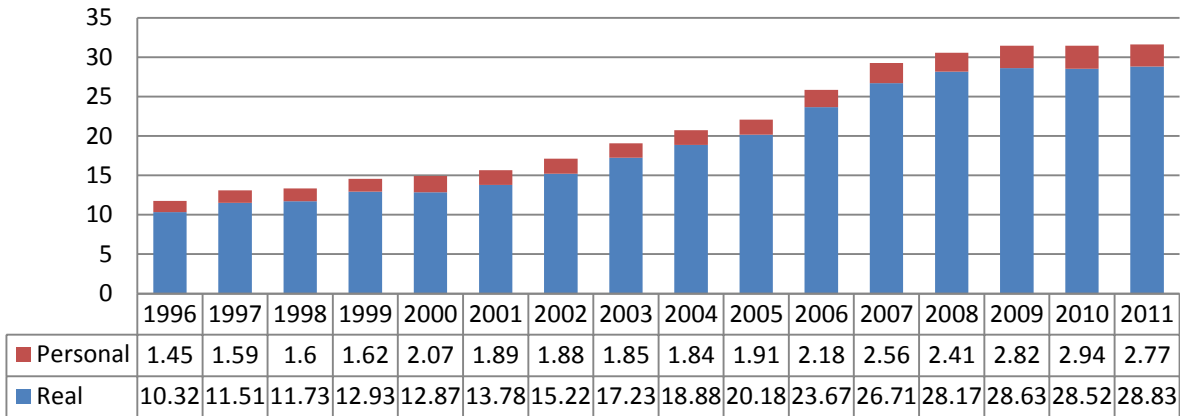
Source: Alaska Department of Labor, Research & Analysis

# Alaska Federal Employment Totals, Dec. 2011

Agency	Total Employment
DEPARTMENT OF THE AIR FORCE	2,358
DEPARTMENT OF AGRICULTURE	869
DEPARTMENT OF THE ARMY	2,622
DEPARTMENT OF COMMERCE	583
DEPARTMENT OF DEFENSE	354
DEPARTMENT OF JUSTICE	75
DEPARTMENT OF LABOR	20
DEPARTMENT OF HEALTH AND HUMAN SERVICES	308
DEPARTMENT OF HOMELAND SECURITY	1,003
DEPARTMENT OF HOUSING AND URBAN DEVELOPMENT	37
DEPARTMENT OF THE INTERIOR	2,415
DEPARTMENT OF THE NAVY	29
DEPARTMENT OF STATE	1
DEPARTMENT OF TRANSPORTATION	1,295
DEPARTMENT OF THE TREASURY	82
DEPARTMENT OF VETERANS AFFAIRS	638
<b>Cabinet Level Agencies Total</b>	<b>12,689</b>
ENVIRONMENTAL PROTECTION AGENCY	39
FEDERAL COMMUNICATIONS COMMISSION	2
GENERAL SERVICES ADMINISTRATION	37
NATIONAL LABOR RELATIONS BOARD	2
NATIONAL ARCHIVES AND RECORDS ADMINISTRATION	5
OFFICE OF PERSONNEL MANAGEMENT	19
SMALL BUSINESS ADMINISTRATION	14
SMITHSONIAN INSTITUTION	1
SOCIAL SECURITY ADMINISTRATION	65
<b>Large Independent Agencies (1000 or more employees) Total</b>	<b>184</b>
Selected Service System	1
National Transportation Safety Board	4
<b>Medium Independent Agencies (100-999 employees) Total</b>	<b>5</b>
Arctic Research Commission	2
Office of the Federal Coordinator for AK Natural Gas Transportation Project	4
Denali Commission	18
Marine Mammal Commission	1
<b>Small Independent Agencies (&lt;100 Employees) Total</b>	<b>25</b>
<b>All Federal Agencies Total</b>	<b>12,903</b>

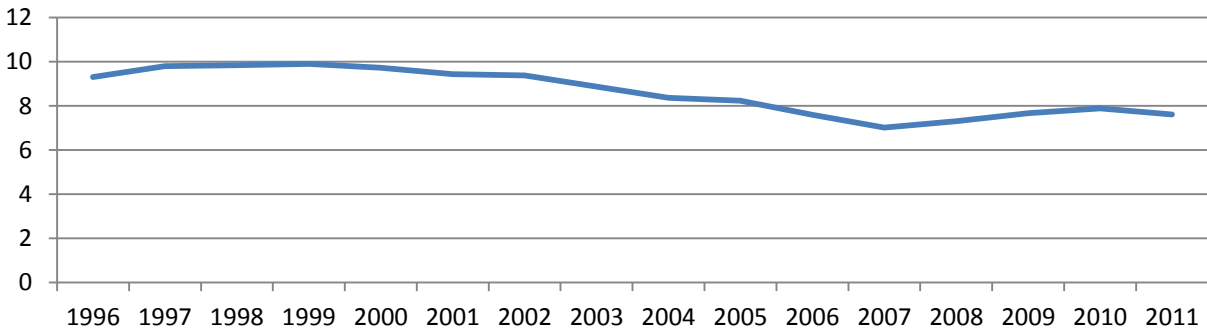
Source: U.S. Office of Personnel Management

## Assessed Value (in Billions \$) of Taxable Property Anchorage 1996-2011



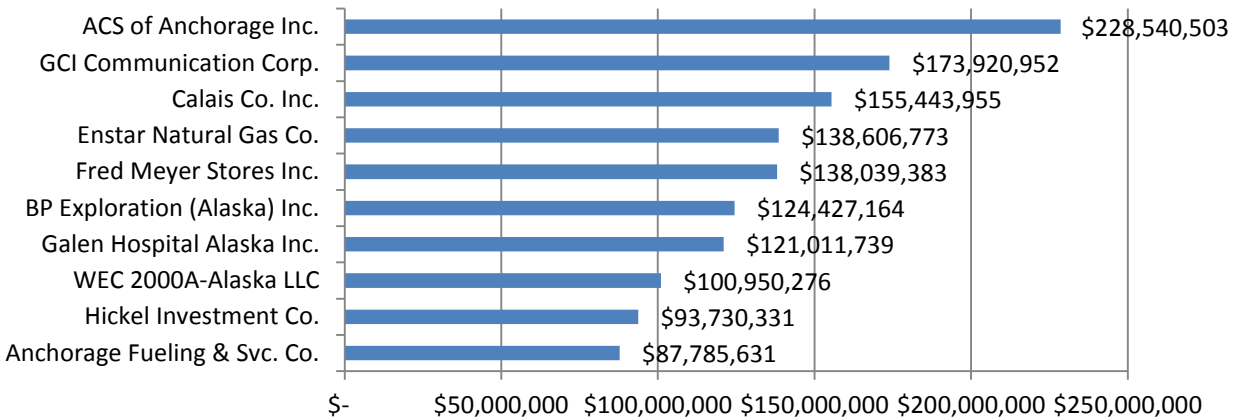
Source: Municipality of Anchorage, Department of Finance, Controller Division

## Areawide Property Tax Rate (Excluding Service Area Taxes) Anchorage 1996-2011



Source: Municipality of Anchorage, Department of Finance, Controller Division

## Top Ten Anchorage Taxpayers Assessed Valuation, 2011



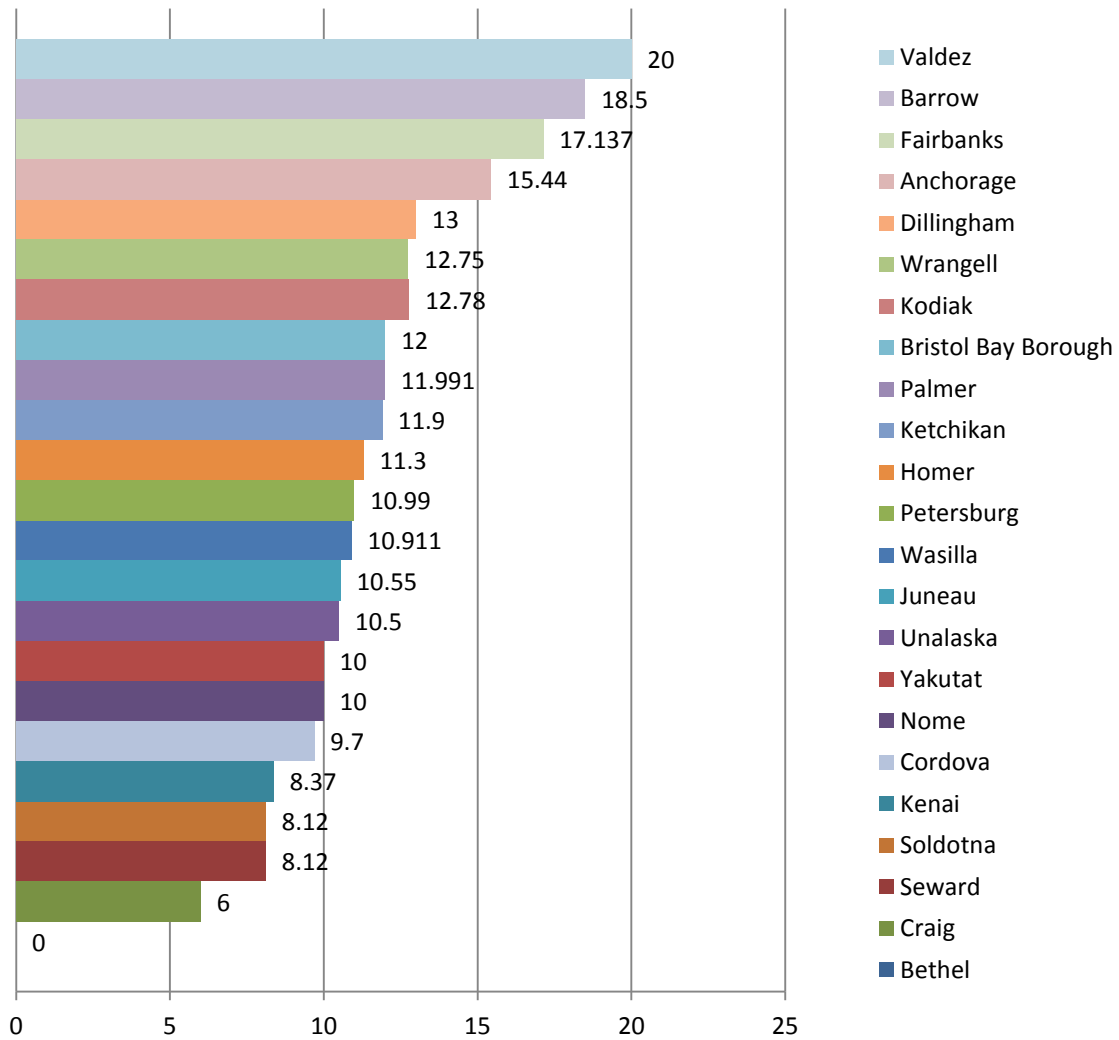
Source: Municipality of Anchorage, Department of Finance, Controller Division

### Senior Citizen & Disabled Veteran Property Tax Exemption Summary, Anchorage, 2000-2011

Year	# of Applicants Approved	Total Assessed Value Exempt	% Value Yearly Change	Total Tax Amount Exempt	% Tax Yearly Change	Average Value per Applicant	Average Tax Per Applicant
2000	7,673	\$871,037,134	7.25%	\$15,407,274	5.86%	\$113,520	\$2,008
2001	8,011	\$950,056,746	9.07%	\$16,924,430	9.85%	\$118,594	\$2,113
2002	8,313	\$1,040,735,615	9.54%	\$17,757,048	4.92%	\$125,194	\$2,136
2003	8,611	\$1,114,226,279	7.06%	\$18,382,917	3.52%	\$129,396	\$2,135
2004	8,847	\$1,172,960,066	5.27%	\$18,930,169	2.98%	\$132,583	\$2,140
2005	9,073	\$1,218,256,812	3.86%	\$19,874,412	4.99%	\$134,273	\$2,191
2006	9,350	\$1,295,637,696	6.35%	\$19,782,258	-0.46%	\$138,571	\$2,116
2007	9,657	\$1,360,941,246	5.04%	\$19,773,233	-0.05%	\$140,928	\$2,048
2008	10,211	\$1,464,729,337	7.63%	\$21,441,081	8.43%	\$143,446	\$2,100
2009	10,753	\$1,543,616,846	5.39%	\$23,476,935	9.50%	\$143,552	\$2,183
2010	11,246	\$1,612,119,218	4.44%	\$24,235,008	3.23%	\$143,350	\$2,155
2011	11,904	\$1,711,452,597	6.16%	\$26,044,862	7.47%	\$143,771	\$2,188

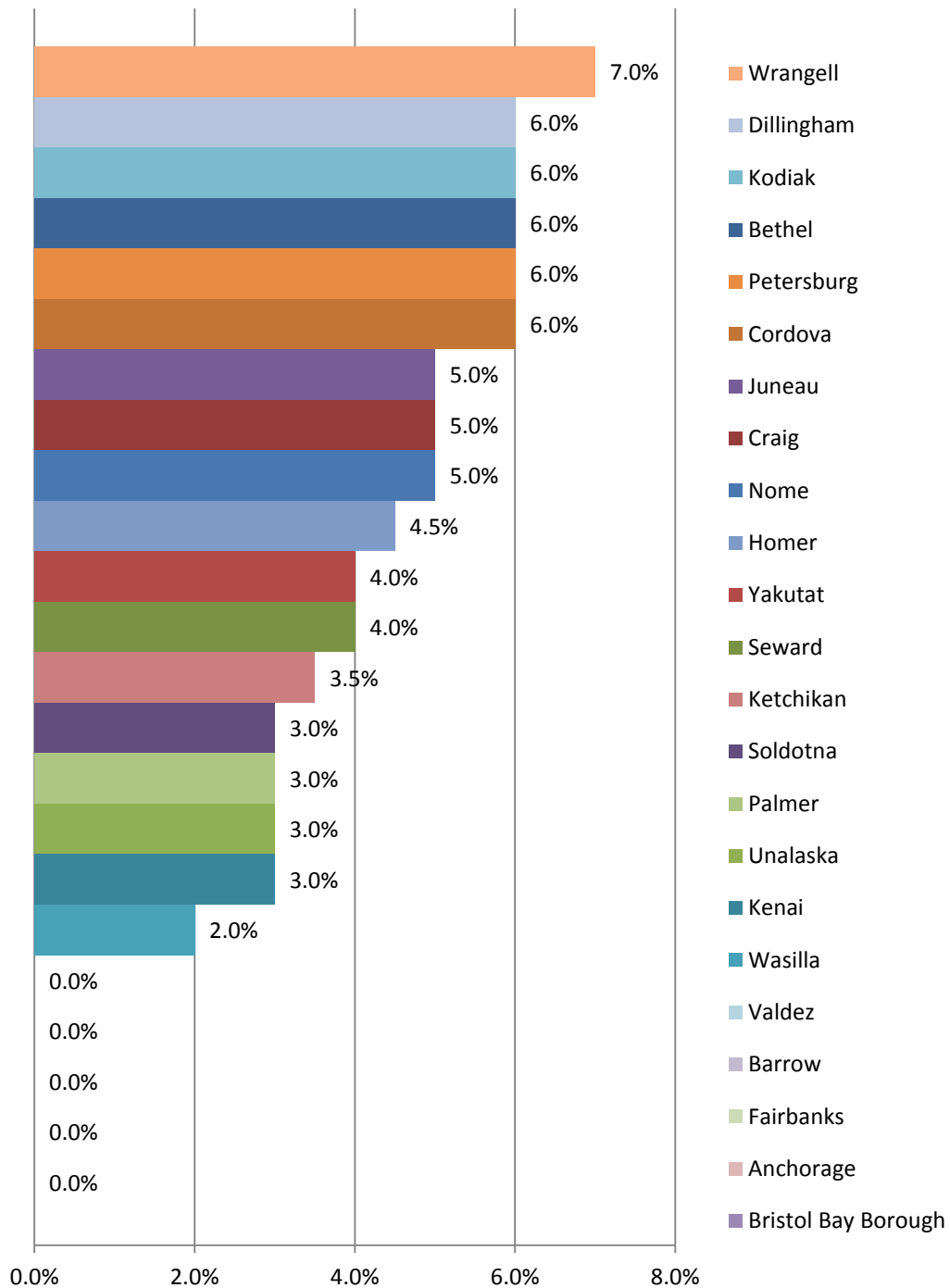
Source: State of Alaska Department of Commerce, Community & Economic Development, Division of Community & Regional Affairs

## Alaska Property Tax Mill Rates Major Communities, 2012



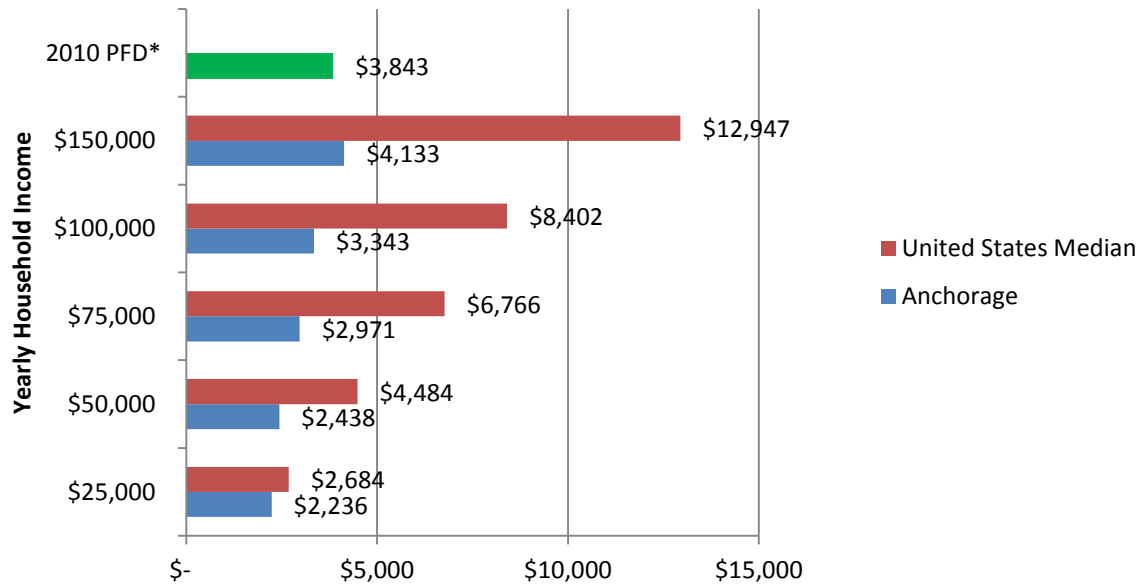
Source: State of Alaska Department of Commerce, Community & Economic Development, Division of Community & Regional Affairs

## Alaska Sales Tax Rates Major Communities, 2012



Source: State of Alaska Department of Commerce, Community & Economic Development, Division of Community & Regional Affairs

## Estimated Burden of Major Taxes For a Family of Three Anchorage & U.S., 2010

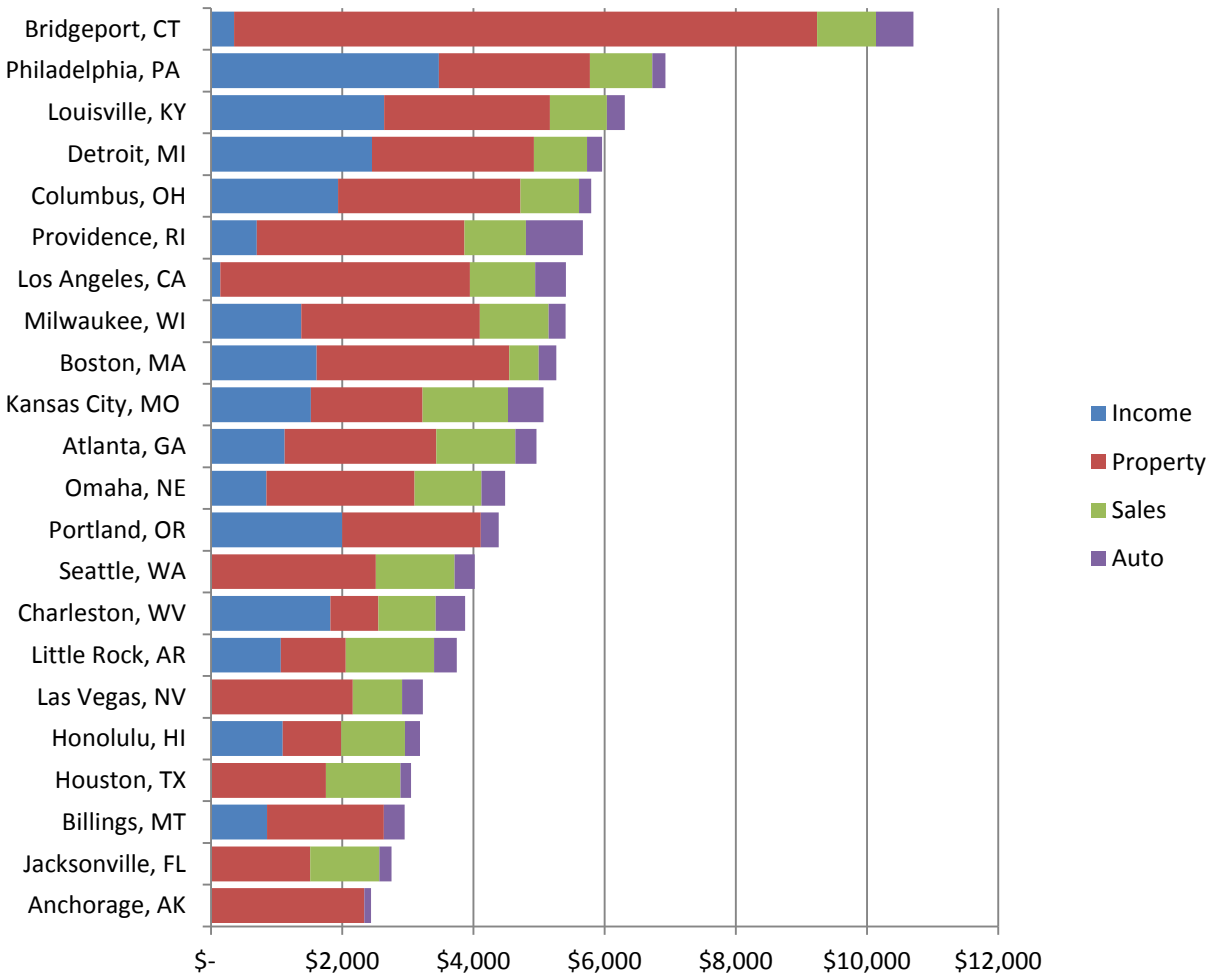


\*PFD total for 3 people (\$1,281 x 3)

Source: Washington D.C. Office of Finance & Revenue



## Estimated State & Local Taxes For a Family of Three w/\$50,000 Annual Income, Selected Cities, 2010



Source: Washington D.C. Office of Finance & Revenue

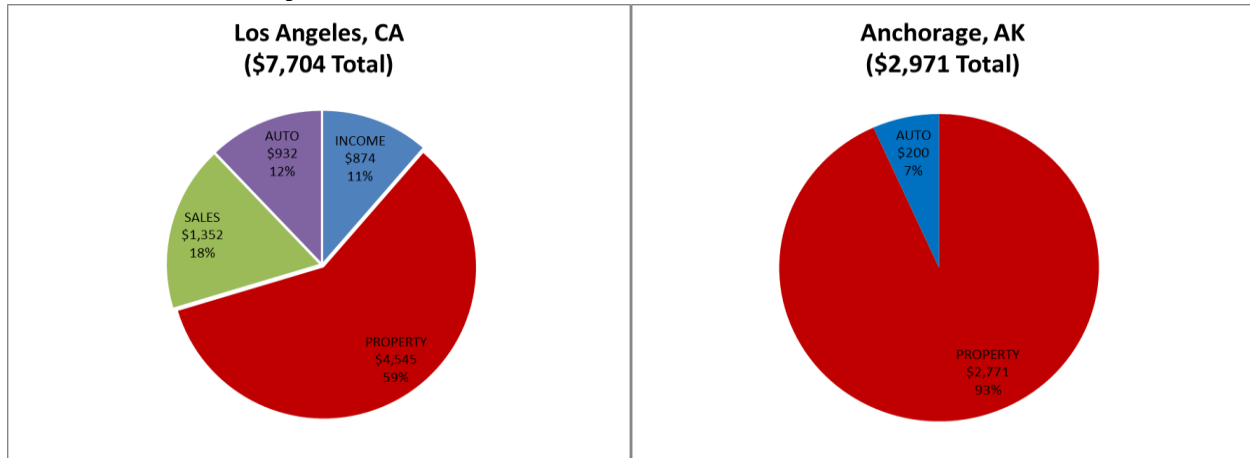
## Estimated Burden of Major Taxes for a Family of Three

### \$50,000 Annual Household Income, 2010

RANK	City	INCOME	Taxes				AMOUNT	PERCENT
			PROPERTY	SALES	AUTO			
1	Bridgeport, CT	\$349	\$8,892	\$896	\$571	\$10,708	21.40%	
2	Philadelphia, PA	\$3,471	\$2,303	\$953	\$200	\$6,928	13.90%	
3	Louisville, KY	\$2,641	\$2,527	\$867	\$273	\$6,308	12.60%	
4	Detroit, MI	\$2,454	\$2,467	\$811	\$229	\$5,960	11.90%	
5	Newark, NJ	\$565	\$4,311	\$964	\$118	\$5,957	11.90%	
6	Columbus, OH	\$1,938	\$2,781	\$893	\$182	\$5,793	11.60%	
7	Providence, RI	\$697	\$3,168	\$933	\$871	\$5,669	11.30%	
8	Los Angeles, CA	\$139	\$3,809	\$996	\$465	\$5,409	10.80%	
9	Milwaukee, WI	\$1,375	\$2,723	\$1,051	\$258	\$5,407	10.80%	
10	Boston, MA	\$1,608	\$2,939	\$449	\$270	\$5,266	10.50%	
11	Chicago, IL	\$1,199	\$2,413	\$1,176	\$279	\$5,068	10.10%	
12	Kansas City, MO	\$1,523	\$1,702	\$1,301	\$541	\$5,067	10.10%	
13	Atlanta, GA	\$1,123	\$2,312	\$1,206	\$321	\$4,962	9.90%	
14	Salt Lake City, UT	\$1,339	\$2,235	\$1,104	\$263	\$4,941	9.90%	
15	Portland, ME	\$801	\$3,147	\$611	\$370	\$4,929	9.90%	
16	Baltimore, MD	\$1,930	\$1,965	\$808	\$188	\$4,890	9.80%	
17	Minneapolis, MN	\$1,132	\$2,518	\$844	\$395	\$4,889	9.80%	
18	New York City, NY	\$1,573	\$1,945	\$1,176	\$163	\$4,857	9.70%	
19	Birmingham, AL	\$2,033	\$459	\$2,108	\$178	\$4,777	9.60%	
20	Charlotte, NC	\$1,586	\$1,624	\$1,223	\$335	\$4,767	9.50%	
21	Indianapolis, IN	\$2,283	\$1,179	\$1,181	\$107	\$4,749	9.50%	
22	Des Moines, IA	\$1,305	\$1,927	\$1,168	\$310	\$4,709	9.40%	
23	Burlington, VT	\$765	\$2,912	\$785	\$164	\$4,626	9.30%	
24	Wilmington, DE	\$1,426	\$2,958	\$0	\$142	\$4,526	9.10%	
25	Jackson, MS	\$738	\$1,925	\$1,223	\$617	\$4,504	9.00%	
26	Omaha, NE	\$844	\$2,258	\$1,019	\$362	\$4,484	9.00%	
27	Portland, OR	\$1,998	\$2,115	\$0	\$272	\$4,385	8.80%	
28	Albuquerque, NM	\$648	\$1,861	\$1,437	\$145	\$4,090	8.20%	
29	Seattle, WA	\$0	\$2,514	\$1,200	\$306	\$4,020	8.00%	
30	Manchester, NH	\$0	\$3,734	\$0	\$235	\$3,968	7.90%	
31	Charleston, WV	\$1,817	\$735	\$874	\$449	\$3,876	7.80%	
32	Little Rock, AR	\$1,063	\$988	\$1,348	\$349	\$3,748	7.50%	
33	Oklahoma City, OK	\$1,303	\$1,010	\$1,228	\$180	\$3,722	7.40%	
34	Columbia, SC	\$1,192	\$1,133	\$856	\$531	\$3,712	7.40%	
35	Virginia Beach, VA	\$1,326	\$1,304	\$696	\$358	\$3,684	7.40%	
36	Phoenix, AZ	\$573	\$883	\$1,942	\$285	\$3,683	7.40%	
37	Washington, D.C.	\$1,269	\$1,258	\$881	\$239	\$3,647	7.30%	
38	Denver, CO	\$1,021	\$1,154	\$1,039	\$389	\$3,603	7.20%	
39	Wichita, KS	\$1,070	\$938	\$1,270	\$317	\$3,595	7.20%	
40	Boise, ID	\$1,180	\$1,267	\$855	\$223	\$3,524	7.00%	
41	New Orleans, LA	\$1,085	\$748	\$1,297	\$141	\$3,272	6.50%	
42	Las Vegas, NV	\$0	\$2,160	\$752	\$318	\$3,229	6.50%	
43	Honolulu, HI	\$1,090	\$897	\$970	\$227	\$3,184	6.40%	
44	Memphis, TN	\$0	\$1,445	\$1,481	\$129	\$3,054	6.10%	
45	Houston, TX	\$0	\$1,753	\$1,133	\$165	\$3,051	6.10%	
46	Billings, MT	\$852	\$1,780	\$0	\$319	\$2,951	5.90%	
47	Fargo, ND	\$467	\$1,407	\$862	\$194	\$2,931	5.90%	
48	Sioux Falls, SD	\$0	\$1,273	\$1,326	\$174	\$2,773	5.50%	
49	Jacksonville, FL	\$0	\$1,511	\$1,053	\$187	\$2,751	5.50%	
<b>50</b>	<b>Anchorage, AK</b>	<b>\$0</b>	<b>\$2,338</b>	<b>\$0</b>	<b>\$100</b>	<b>\$2,438</b>	<b>4.90%</b>	
51	Cheyenne, WY	\$0	\$812	\$956	\$316	\$2,085	4.20%	
	<b>U.S. Median</b>	<b>\$1,090</b>	<b>\$1,927</b>	<b>\$970</b>	<b>\$270</b>	<b>\$4,484</b>	<b>9.00%</b>	

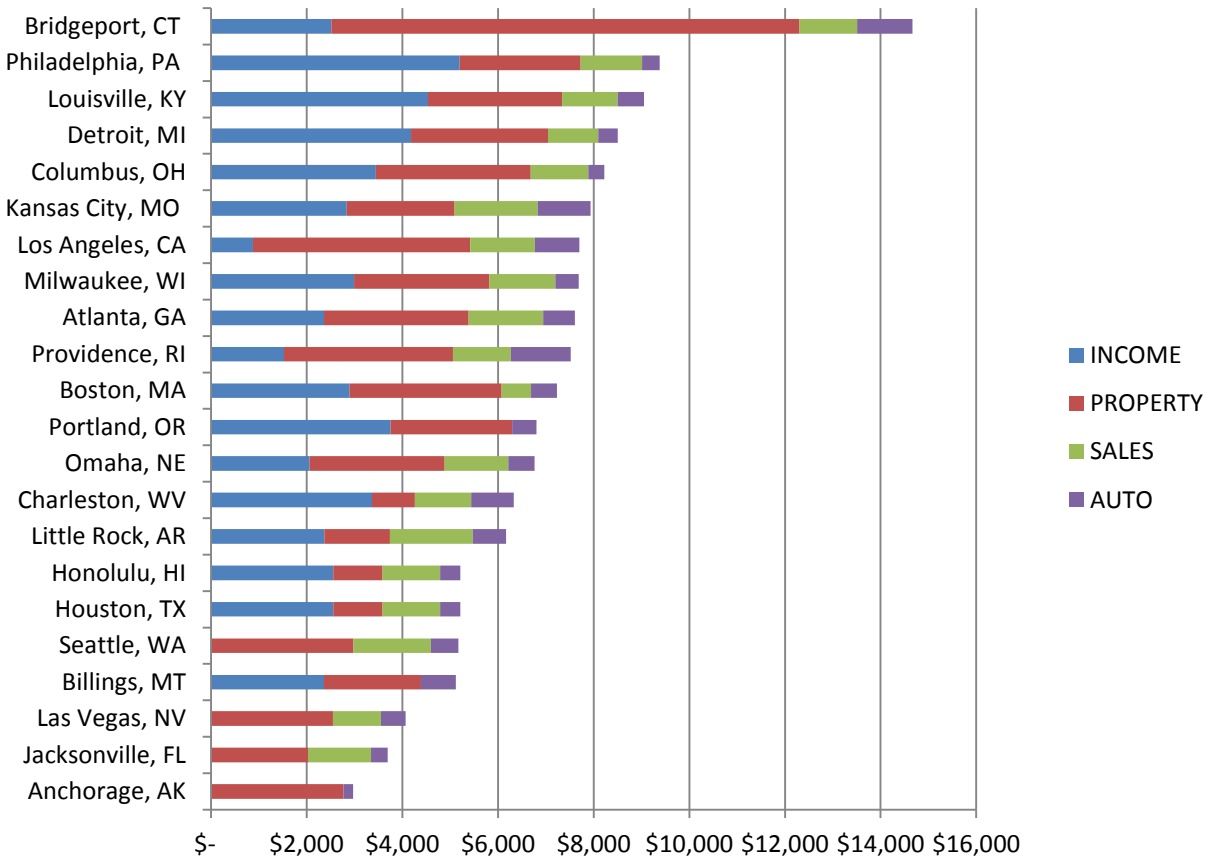
Source: Washington D.C. Office of Finance & Revenue

## State & Local Tax Comparison Anchorage, AK vs. Los Angeles, CA, 2010 Family of Three w/\$75,000 Household Income



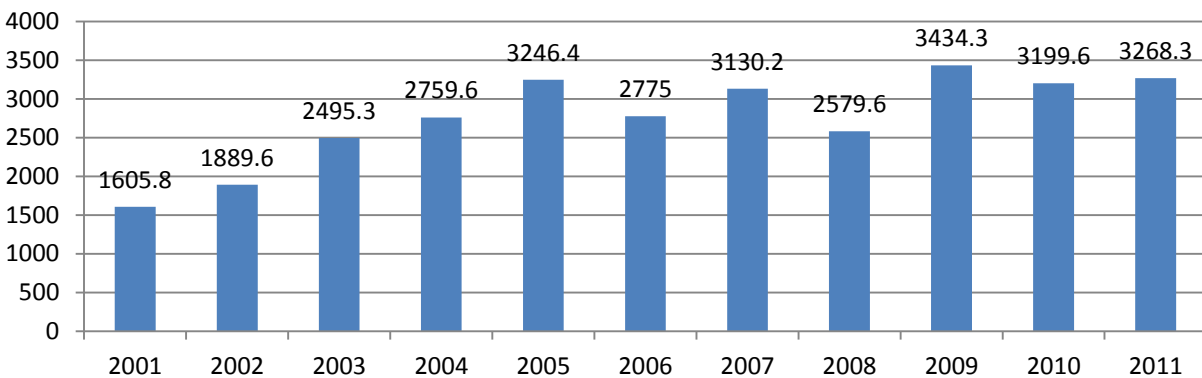
Source: Washington D.C. Office of Finance & Revenue

## Estimated State & Local Taxes For a Family of Three w/\$75,000 Annual Income, Selected Cities, 2010



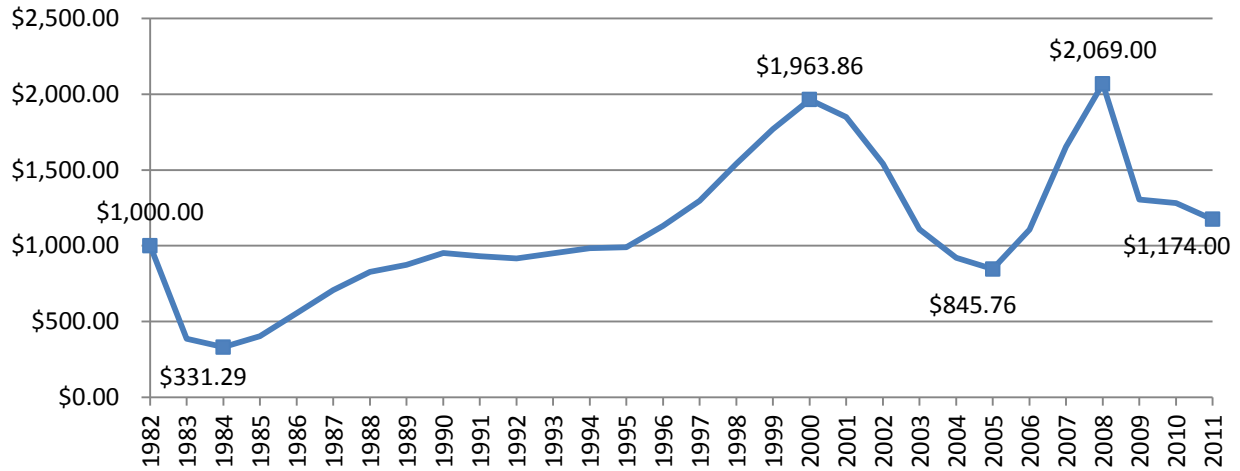
Source: Washington D.C. Office of Finance & Revenue

## Federal Funds for State Government Alaska (in \$ Millions) 2001-2011



Source: State of Alaska, Office of Management & Budget

## Alaska Permanent Fund Dividend Annual Per Capita Payment, 1982-2011



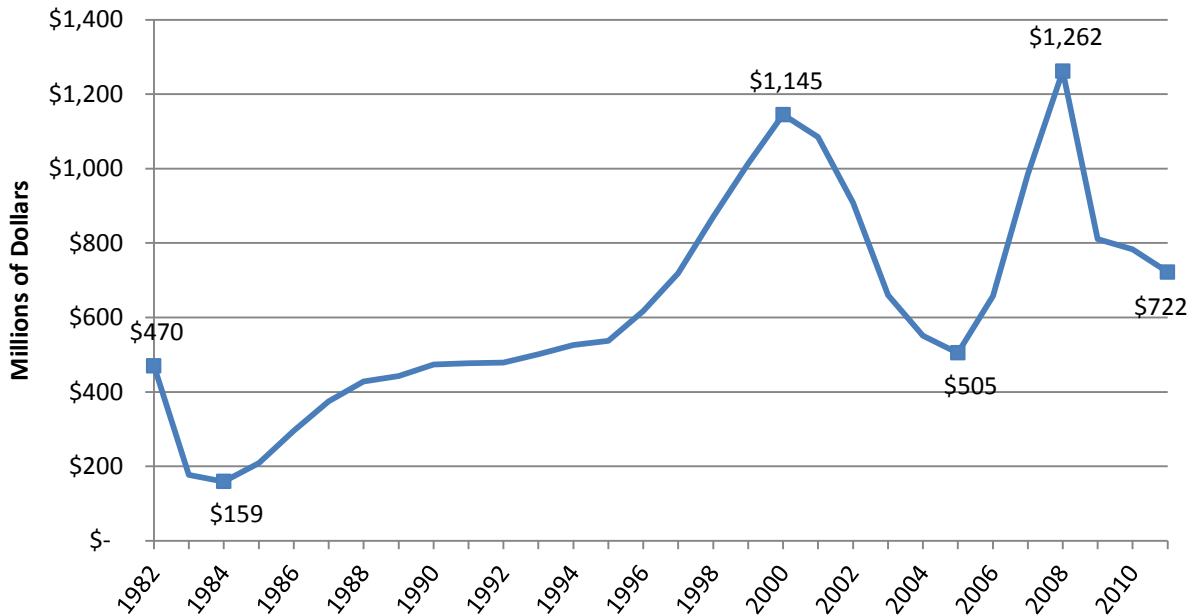
Source: Alaska Permanent Fund Corporation

## Historical Summary of Alaska Permanent Fund Dividend Applications and Payments, 1982-2011

Year	State Population	Dividend Applications		% Of Population Receiving Dividends	Dividend Amount	% Change From Last Year	Amount Disbursed
		Received	Paid				
1982	464,300	484,344	469,741	101.2%	\$1,000.00		\$469,741,000.00
1983	499,100	465,567	457,209	91.6%	\$386.15	-61%	\$176,551,255.35
1984	524,000	490,413	481,349	91.9%	\$331.29	-14%	\$159,466,110.21
1985	543,900	525,145	518,479	95.3%	\$404.00	22%	\$209,465,516.00
1986	550,700	540,202	532,294	96.7%	\$556.26	38%	\$296,093,860.44
1987	541,300	535,578	529,478	97.8%	\$708.19	27%	\$374,971,024.82
1988	535,000	532,227	518,150	96.9%	\$826.93	17%	\$428,473,779.50
1989	538,900	524,272	507,547	94.2%	\$873.16	6%	\$443,169,738.52
1990	553,171	531,494	497,608	90.0%	\$952.63	9%	\$474,036,309.04
1991	569,054	533,692	512,098	90.0%	\$931.34	-2%	\$476,937,351.32
1992	586,722	542,263	522,636	89.1%	\$915.84	-2%	\$478,650,954.24
1993	596,906	549,066	527,946	88.4%	\$949.46	4%	\$501,263,609.16
1994	600,622	557,836	534,599	89.0%	\$983.90	4%	\$525,991,956.10
1995	601,581	563,020	541,842	90.1%	\$990.30	1%	\$536,586,132.60
1996	605,212	564,362	546,045	90.2%	\$1,130.68	14%	\$617,402,160.60
1997	609,655	573,057	554,769	91.0%	\$1,296.54	15%	\$719,280,199.26
1998	617,082	581,803	565,256	91.6%	\$1,540.88	19%	\$870,991,665.28
1999	622,000	589,738	572,877	92.1%	\$1,769.84	15%	\$1,013,900,629.68
2000	627,533	607,910	583,098	92.9%	\$1,963.86	11%	\$1,145,122,838.28
2001	632,241	608,600	586,230	92.7%	\$1,850.28	-6%	\$1,084,689,644.40
2002	640,544	612,377	589,420	92.0%	\$1,540.76	-17%	\$908,154,759.20
2003	647,747	619,552	595,571	91.9%	\$1,107.56	-28%	\$659,630,616.76
2004	656,834	625,535	599,243	91.2%	\$919.84	-17%	\$551,207,681.12
2005	663,253	627,595	596,936	90.0%	\$845.76	-8%	\$504,864,591.36
2006	670,053	623,792	594,029	88.7%	\$1,106.96	31%	\$657,566,341.84
2007	676,987	628,895	595,237	87.9%	\$1,654.00	49%	\$984,521,998.00
2008	679,720	641,291	610,096	89.8%	\$2,069.00	25%	\$1,262,288,624.00
2009	692,314	654,462	621,146	89.7%	\$1,305.00	-37%	\$810,595,530.00
2010	710,231	663,938	611,522	86.1%	\$1,281.00	-2%	\$783,359,682.00
2011	722,190	672,237	615,122	85.2%	\$1,174.00	-8%	\$722,153,228.00
Totals	17,217,475	16,587,899		96.3%	\$33,365.41		\$18,847,410,514.89

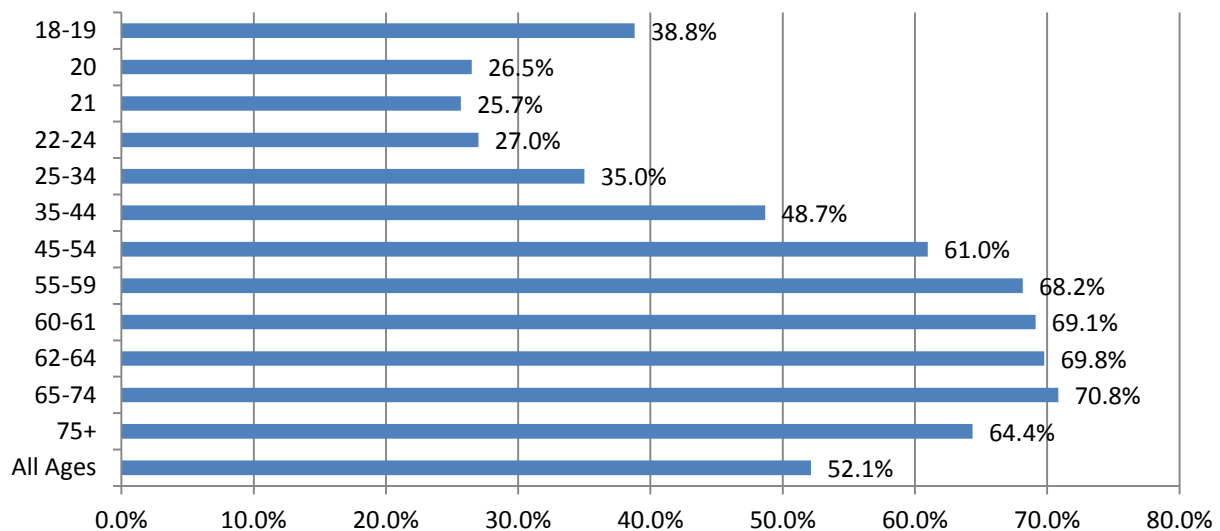
Source: Alaska Permanent Fund Corporation

## Permanent Fund Dividend Payments in Alaska, 1982-2011 (in Millions of \$)



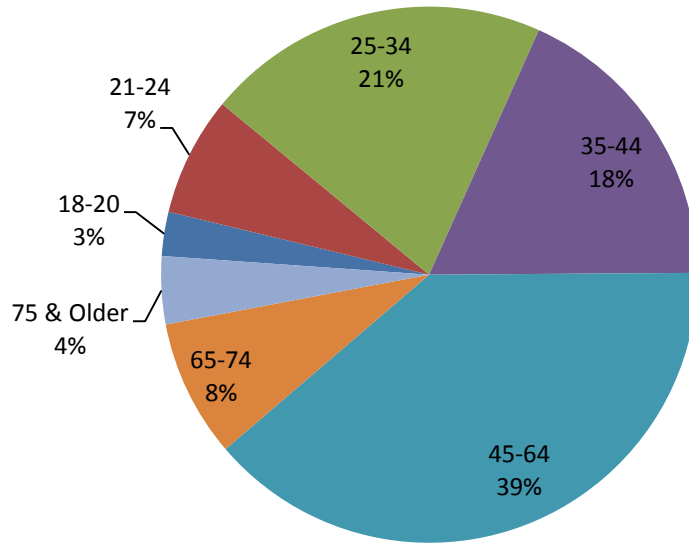
Source: Alaska Permanent Fund Corporation

## % of Registered Alaskan Voters Who Voted In the 2010 Alaska General Election, By Age



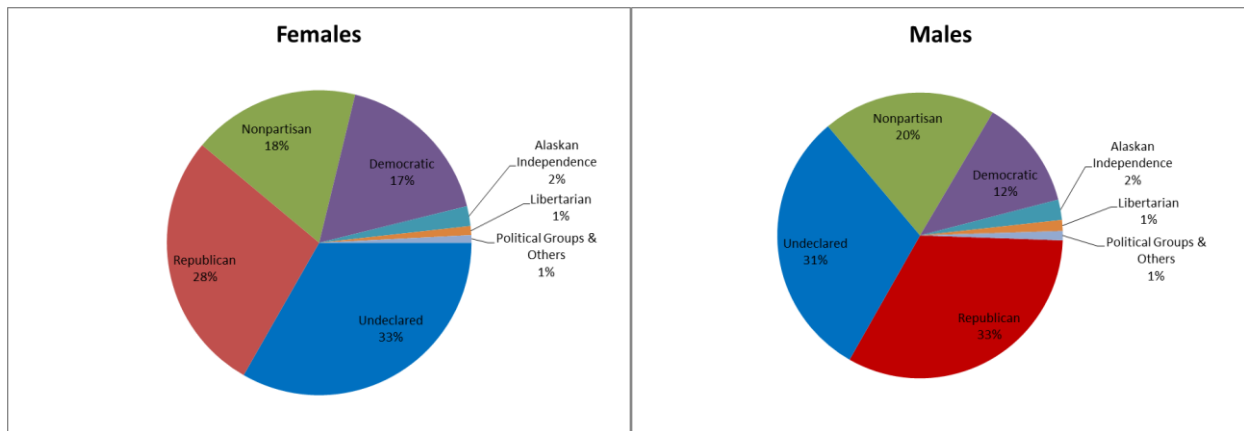
Source: State of Alaska, Division of Elections

## Alaskan Registered Voters By Age March 2012



Source: State of Alaska, Division of Elections

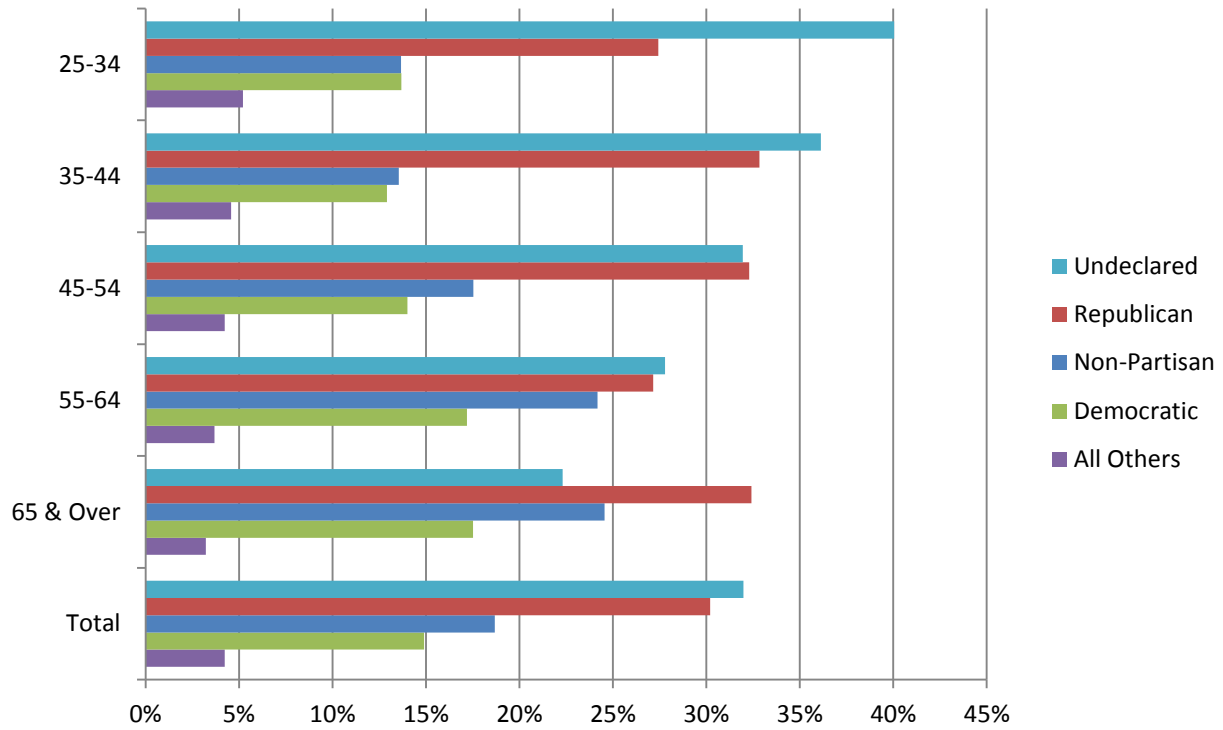
## Alaska Voters by Gender & Party 2010 General Election



Source: State of Alaska, Division of Elections



## Alaska 2010 General Election Voters by Age & Party



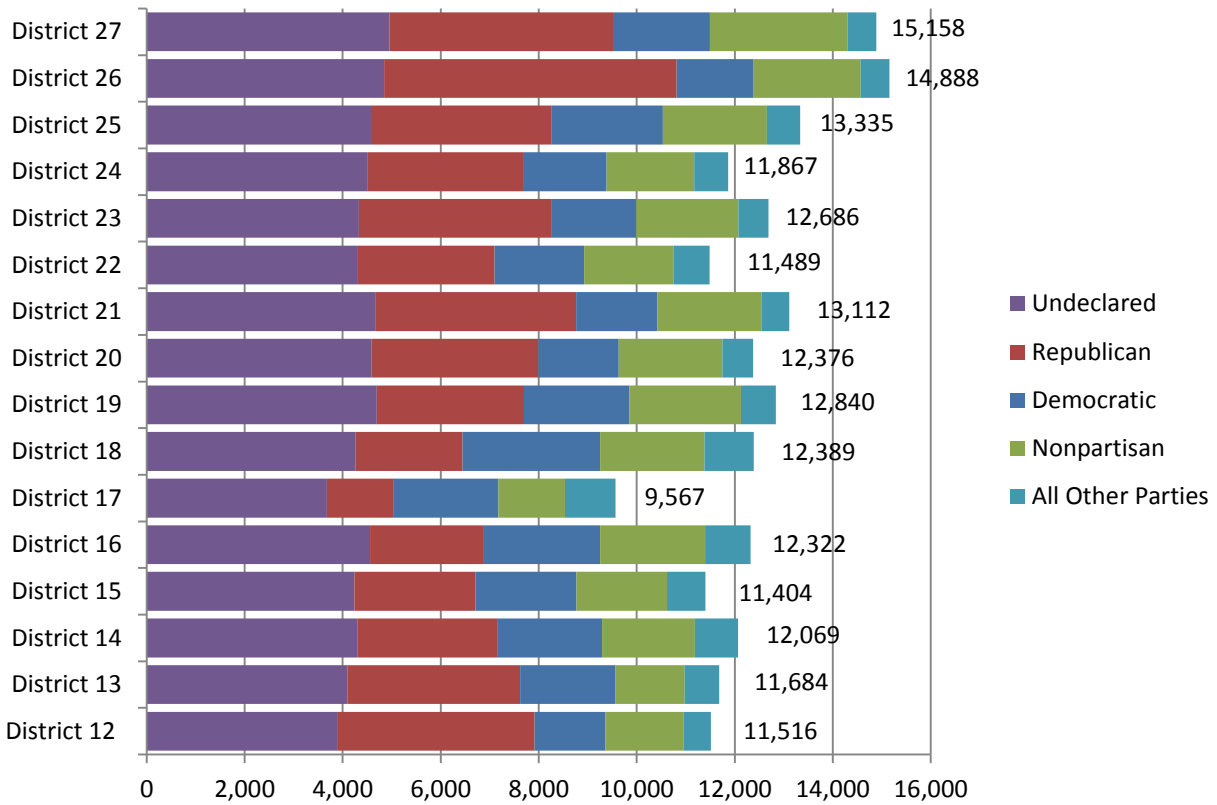
Source: State of Alaska, Division of Elections

## Registered Voters by Districts, Aug. 5, 2012

	TOTAL	Recognized Political Parties				Other		Political Groups		
		Alaskan Independence	Democratic	Libertarian	Republican	Nonpartisan	Undeclared	Alaska Constitution Party	Green Party of Alaska	Veterans Party of Alaska
District 11	12,657	367	993	163	4,552	2,078	4,439	0	34	31
District 12	11,516	283	1,438	183	4,034	1,602	3,884	1	20	71
District 13	11,684	288	1,940	306	3,529	1,415	4,092	3	22	89
District 14	12,069	295	2,139	450	2,855	1,897	4,297	1	41	94
District 15	11,404	285	2,065	403	2,464	1,850	4,242	3	43	49
District 16	12,322	355	2,388	455	2,307	2,140	4,559	1	66	51
District 17	9,567	288	2,152	538	1,352	1,354	3,675	0	47	161
District 18	12,389	374	2,805	494	2,183	2,130	4,263	0	74	66
District 19	12,840	308	2,153	323	2,999	2,276	4,699	1	49	32
District 20	12,376	292	1,635	268	3,402	2,118	4,594	0	41	26
District 21	13,112	283	1,660	240	4,096	2,120	4,666	1	31	15
District 22	11,489	332	1,824	335	2,793	1,820	4,309	5	38	33
District 23	12,686	277	1,727	268	3,934	2,080	4,333	1	38	28
District 24	11,867	321	1,706	306	3,178	1,792	4,499	0	33	32
District 25	13,335	308	2,276	287	3,658	2,122	4,598	1	23	62
District 26	15,158	333	1,561	184	5,970	2,194	4,843	1	18	54
District 27	14,888	255	1,957	233	4,581	2,806	4,954	0	86	16

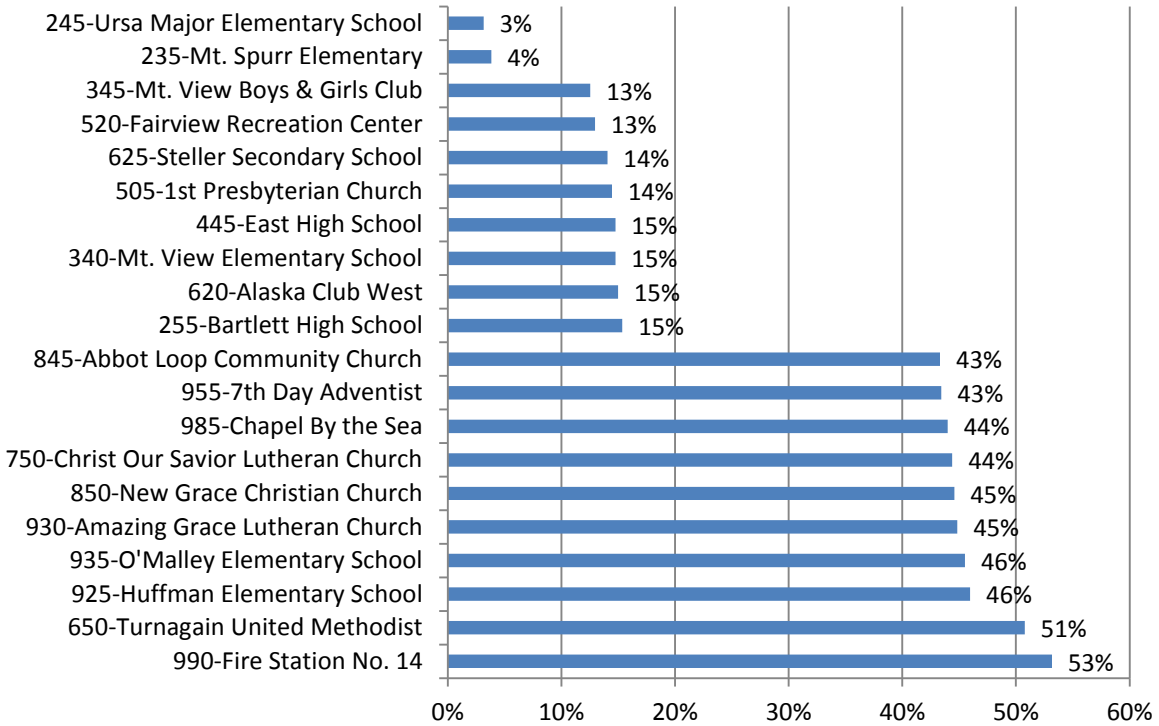
Source: State of Alaska, Division of Elections

## April 2012 Registered Voters by Party & Election District



Source: State of Alaska, Division of Elections

## Highest & Lowest Voter Turnout by Precincts, Anchorage April 2012 Regular Election



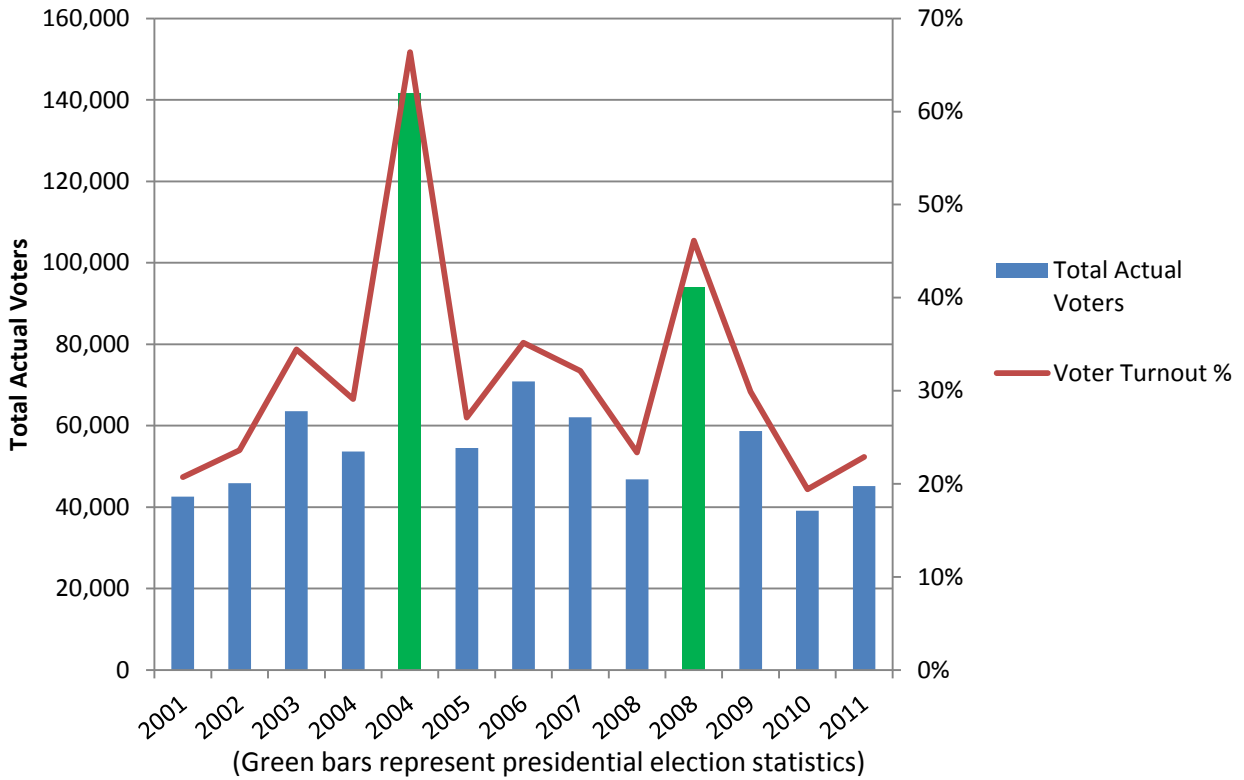
Source: Municipality of Anchorage, Municipal Clerk, Election Records

## Municipality of Anchorage Election Statistics, 2001-2011

Year	MOA Election Date	Resident Population	Registered Voters	Total Actual Voters	% Voter Turnout	Election	Total Mayoral Votes	Candidate	Votes	%	Candidate	Votes	%
2001	4/3/2011	260,283	205,733	42,618	21%								
2002	4/2/2002	264,600	194,218	45,866	24%	Assem & Sch Bd							
2003	4/1/2003	267,339	184,419	63,524	34%	Mayor & Sch Bd	63,524	Begich	28,604	45.0%	Wuerch	23,615	37.2%
2004	4/20/2004	272,304	184,162	53,633	29%	Assem & Sch Bd							
2004	11/3/2004	276,865	472,160	245,812	52%	President, Vice President, Senate & House							
2005	4/16/2005	277,157	201,007	54,532	27%	Assem & Sch Bd							
2006	4/15/2006	281,831	201,440	70,859	35%	Mayor & Sch Bd	70,859	Begich	39,468	55.7%	Frost	28,760	40.6%
2007	4/3/2007	281,151	193,197	62,071	32%	Assem & Sch Bd							
2008	4/12/2008	282,871	200,533	46,850	23%	Assem & Sch Bd							
2009	4/18/2009	289,230	196,248	58,714	30%	Mayor & Sch Bd	58,714	Sullivan	25,262	43.0%	Croft	11,432	19.5%
2010	4/16/2010	291,826	201,368	39,096	19%	Assem & Sch Bd							
2011	4/15/2011	296,197	197,420	45,200	23%	Assem & Sch Bd							

Source: Municipality of Anchorage, Municipal Clerk, Election Records

## Municipality of Anchorage Election Statistics, 2001-2011



Source: Municipality of Anchorage, Municipal Clerk, Election Records & State of Alaska, Division of Elections