

Cost of Living in Anchorage



Table of Contents:

Anchorage Consumer Price Index for All Urban Consumers, 1983-2011	83
Anchorage Consumer Price Index, Percent Change From Prior Year, 1983-2011	84
Anchorage Consumer Price Index, Annual Change for All Items for All Urban Consumers.....	85
Consumer Price Index, Anchorage, 1983-2011	85
Detailed Anchorage Consumer Price Index, All Urban Consumers, 2002-2011.....	86
Consumer Price Index Major Categories, Anchorage Annual % Change, 2010-2011	87
Consumer Price Index for Selected Items, Anchorage % Change, 2010-2011	87
Anchorage Consumer Price Index Semi-Annual % Change from Prior Year, 1999-2012.....	88
Anchorage Consumer Price Index Semi-Annual & Annual Averages, 1984-2012	89
U.S. City Average Consumer Price Index for All Urban consumers Index, 1983-2011.....	90
Consumer Price Index for All Items, Average Annual % Change for U.S. & Anchorage, 1999-2011	91
Relative Importance of CPI Components, U.S. All Urban Consumers, 2010	91
Cost of Living Index for Select Alaskan Cities, 2007-2011	92

Anchorage Consumer Price Index for All Urban Consumers (CPI-U), 1983 to 2011 (1982-84 = 100)

Year	All Items		Housing	Transportation	Food & Beverages	Medical Care	Clothing	Energy
	All Items	Minus Housing						
1983	99.2	99.9	99	98.5	99.7	99.7	101.6	99.4
1984	103.3	103.8	102.7	104.6	103.2	105.5	101.7	100.5
1985	105.8	107.5	103	108.2	106.2	110.9	105.8	103.4
1986	107.8	111.2	102.6	107.8	110.8	127.8	109	96.6
1987	108.2	115.1	97.5	111.3	113.1	137	116.6	94.6
1988	108.6	117.8	95.4	113	113.8	145.8	119.1	98.2
1989	111.7	122.3	96.3	116.7	117.2	154.4	125	105.2
1990	118.6	128	103.9	120.7	123.7	161.2	127.7	114.5
1991	124	131.9	111.2	121.7	127.7	173.5	126.6	112.2
1992	128.2	134.6	116.6	123.3	130.3	183	130.2	112.7
1993	132.2	137.9	121.1	128.8	131.2	189.6	131.2	114.7
1994	135	140.3	122.9	136.9	131.9	197.8	128.9	114.4
1995	138.9	144.6	124.9	143.8	138.5	211.6	130	114.4
1996	142.7	148.4	127.9	147.2	143.4	231.1	128.7	119.1
1997	144.8	150.6	129.4	147	145.8	248.9	127	123.5
1998	146.9	152.6	131	144.9	147.3	255.7	125.6	118.3
1999	148.4	153.5	132.7	143.7	148.4	260.8	125.8	116.2
2000	150.9	156.1	134.2	150.5	151.7	272.1	124.5	131
2001	155.2	160.6	139	153	156.4	282.9	131.1	143.2
2002	158.2	162.2	143.5	151.5	157.9	-	126.7	140.1
2003	162.5	166.5	146.8	158.3	161.8	-	123.2	149.9
2004	166.7	171.7	149.1	162.7	168.9	-	123.9	164.4
2005	171.8	177.5	153.1	171.7	173.1	344.2	121.3	185.4
2006	177.3	182.9	159.2	178.6	176.2	356.1	126.9	211.2
2007	181.2	187.7	163.5	180.7	184.2	367	123.4	232.2
2008	189.5	198	167.6	199.7	192.3	380.6	130.9	272.9
2009	191.7	199.2	173.7	190.2	191.8	397	135.6	251.5
2010	195.1	202.2	175.2	198.6	191.4	419.7	139.7	260.3
2011	201.4	209.2	180.4	207.9	198.3	442	142.8	288.5

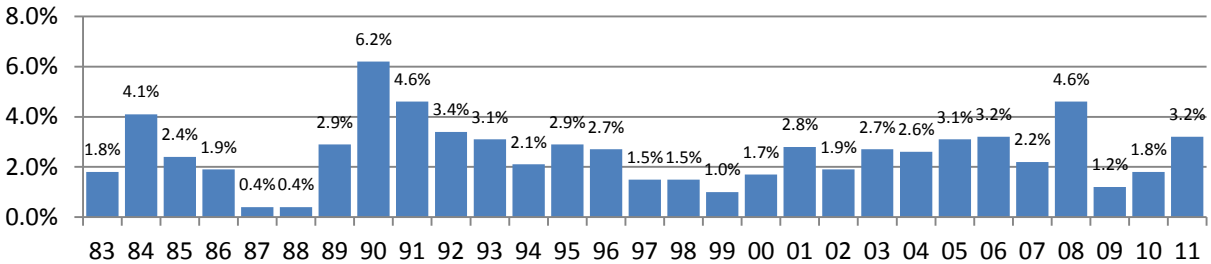
Source: U.S. Department of Labor, Bureau of Labor Statistics

Anchorage Consumer Price Index (CPI-U) Percent Change From Prior Year, 1983-2011

Year	All Items	All Items			Food & Beverages	Medical Care	Clothing	Energy
		Minus Housing	Housing	Transportation				
1983	1.8%	3.70%	0.80%	1.80%	2.60%	5.20%	5.20%	-0.10%
1984	4.1%	3.90%	3.70%	6.20%	3.50%	5.80%	0.10%	1.10%
1985	2.4%	3.60%	0.30%	3.40%	2.90%	5.10%	4.00%	2.90%
1986	1.9%	3.40%	-0.40%	-0.40%	4.30%	15.20%	3.00%	-6.60%
1987	0.4%	3.50%	-5.00%	3.20%	2.10%	7.20%	7.00%	-2.10%
1988	0.4%	2.30%	-2.20%	1.50%	0.60%	6.40%	2.10%	3.80%
1989	2.9%	3.80%	0.90%	3.30%	3.00%	5.90%	5.00%	7.10%
1990	6.2%	4.70%	7.90%	3.40%	5.50%	4.40%	2.20%	8.80%
1991	4.6%	3.00%	7.00%	0.80%	3.20%	7.60%	-0.90%	-2.00%
1992	3.4%	2.00%	4.90%	1.30%	2.00%	5.50%	2.80%	0.40%
1993	3.1%	2.50%	3.90%	4.50%	0.70%	3.60%	0.80%	1.80%
1994	2.1%	1.70%	1.50%	6.30%	0.50%	4.30%	-1.80%	-0.30%
1995	2.9%	3.10%	1.60%	5.00%	5.00%	7.00%	0.90%	0.00%
1996	2.7%	2.60%	2.40%	2.40%	3.50%	9.20%	-1.00%	4.10%
1997	1.5%	1.50%	1.20%	-0.10%	1.70%	7.70%	-1.30%	3.70%
1998	1.5%	1.30%	1.20%	-1.40%	1.00%	2.70%	-1.10%	-4.20%
1999	1.0%	0.60%	1.30%	-0.80%	0.70%	2.00%	0.20%	-1.80%
2000	1.7%	1.70%	1.10%	4.70%	2.20%	4.30%	-1.00%	12.70%
2001	2.8%	2.90%	3.60%	1.70%	3.10%	4.00%	5.30%	9.30%
2002	1.9%	1.00%	3.20%	-1.00%	1.00%	—	-3.40%	-2.20%
2003	2.7%	2.70%	2.30%	4.50%	2.50%	—	-2.80%	7.00%
2004	2.6%	3.10%	1.60%	2.80%	4.40%	—	0.60%	9.70%
2005	3.1%	3.40%	2.70%	5.50%	2.50%	—	-2.10%	12.80%
2006	3.2%	3.00%	4.00%	4.00%	1.80%	3.50%	4.60%	13.90%
2007	2.2%	2.60%	2.70%	1.20%	4.60%	3.00%	-2.80%	9.90%
2008	4.6%	5.50%	2.50%	10.50%	4.40%	3.70%	6.10%	17.50%
2009	1.2%	0.60%	3.70%	-4.80%	-0.20%	4.30%	3.60%	-7.80%
2010	1.8%	1.50%	0.90%	4.40%	-0.20%	5.70%	3.00%	3.50%
2011	3.2%	3.40%	2.90%	4.70%	3.60%	5.30%	2.20%	10.80%

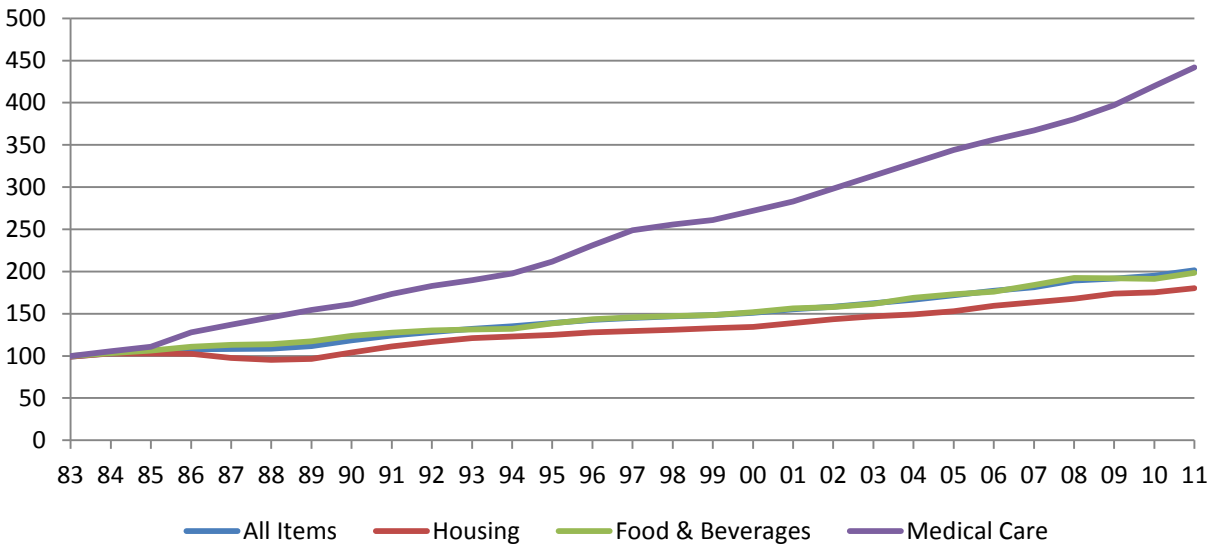
Source: U.S. Department of Labor, Bureau of Labor Statistics

Anchorage Consumer Price Index Annual Change for All Items for All Urban Consumers



Source: U.S. Department of Labor, Bureau of Labor Statistics

Consumer Price Index, Anchorage, 1983-2011



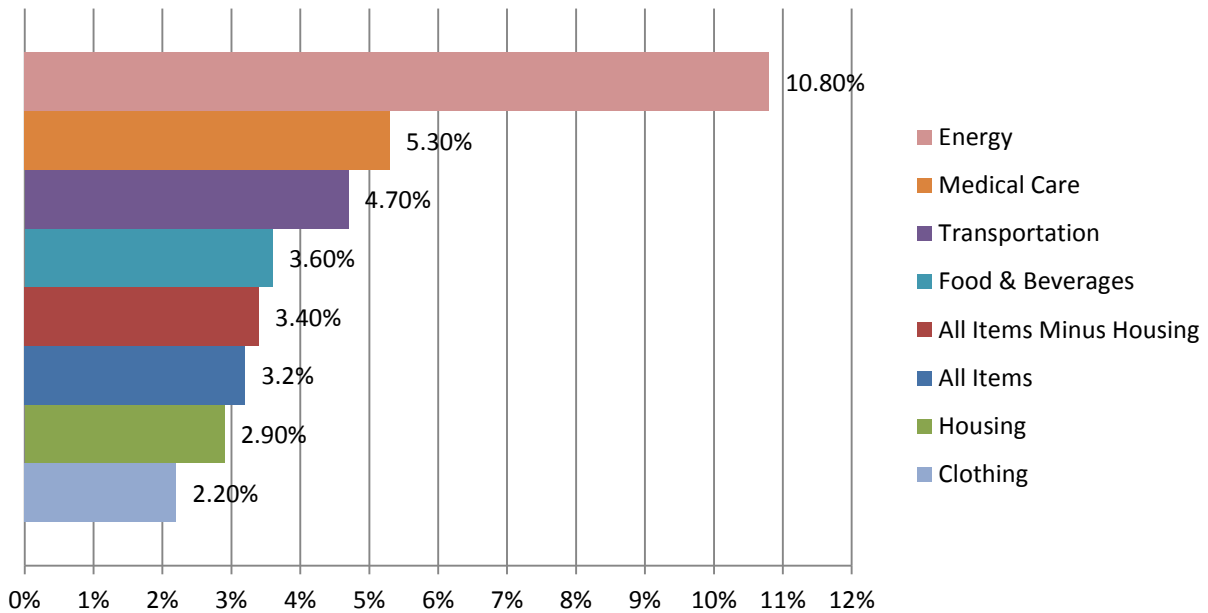
Source: U.S. Department of Labor, Bureau of Labor Statistics

Detailed Anchorage Consumer Price Index, All Urban Consumers

Base Period:	1982-84=100	*Dec. 1997=100	**Dec. 2009=100	*** Nov. 1982=100	**** Dec. 1993=100	% Change					
Expenditure Category	2002	2003	2004	2005	2006	2007	2008	2009	2010	2011	2010-2011
Consumer Price Index - All Urban Consumers, Not Seasonally Adjusted	158.2	162.5	166.7	171.8	177.3	181.237	189.497	191.744	195.144	201.427	3.2%
Energy	140.1	149.9	164.4	185.4	211.2	232.191	272.857	251.548	260.346	288.457	10.8%
All Items less food & energy	160.2	164.3	167.1	171.2	175.3	177.346	182.92	187.424	190.889	195.167	2.2%
All items less shelter	162.2	166.5	171.7	177.5	182.9	187.644	198.032	199.231	202.216	209.185	3.4%
All items less medical care	152.7	156.6	160.3	165.1	170.3	174.056	182.085	183.882	186.663	192.404	3.1%
All items less energy	160	164	167.4	171.6	175.6	178.471	184.425	188.351	191.302	196.114	2.5%
Apparel	126.7	123.2	123.9	121.3	126.9	123.356	130.852	135.621	139.702	142.841	2.2%
Commodities	143.8	145.2	148	153	156.6	158.903	169.581	165.31	169.639	176.985	4.3%
Commodities less food	136.8	137.3	138	143.1	146.9	146.972	158.294	152.206	158.227	165.217	4.4%
Commodities less food and beverages	135.7	135.9	136.7	142	145.7	145.769	157.49	151.57	157.983	165.406	4.7%
Durables	127.1	125.1	122.2	124.7	124.8	122.126	123.952	123.062	123.55	123.632	0.1%
Education and communication*	96.2	102.4	103.3	104.2	106.6	107.321	109.298	110.759	111.548	110.961	-0.5%
Education and communication commodities**									96.617	83.054	-14.0%
Education and communication services**									99.9	100.9	1.0%
Food and beverages	157.9	161.8	168.9	173.1	176.2	184.224	192.283	191.809	191.373	198.347	3.6%
Food	158.3	161.6	169.3	173.9	177	185.567	194.347	194.845	194.731	202.795	4.1%
Food at home	161.8	164	172.5	176.1	177.6	187.131	198.195	198.62	196.747	205.59	4.5%
Alcoholic beverages	154.3	163.6	163.4	161.7	164.3	166.068	166.268	156.662	153.291	151.503	-1.2%
Other goods and services	224	225.9	235.1	250.8	254	264.234	284.307	300.094	305.266	320.062	4.8%
Other goods**									99.163	107.521	8.4%
Other personal services**									100.839	102.039	1.2%
Housing	143.5	146.8	149.1	153.1	159.2	163.467	167.564	173.712	175.241	180.396	2.9%
Shelter	146.5	150.8	153	157	162.3	164.54	169.058	173.162	177.166	182.197	2.8%
Fuels and utilities	162.5	160.4	175.1	189.4	211.9	238.72	241.659	271.269	247.739	256.23	3.4%
Household energy	163.5	160.9	177.2	193.6	220.2	250.802	253.094	289.19	255.303	264.401	3.6%
Household furnishings and operations	111.5	113.1	110	109.9	110.8	112.098	115.741	120.403	121.464	126.15	3.9%
Household furnishings and supplies									98.445	102.436	4.1%
Medical care	344.2				356.1	366.953	380.591	397.03	419.731	442.044	5.3%
Nondurables	151.5	154.7	160.7	167.2	173.3	179.253	195.53	189.277	195.748	207.118	5.8%
Nondurables less food	145.6	148.6	153.3	161.5	170	173.904	196.246	184.523	196.255	210.085	7.0%
Nondurables less food and beverages	144.4	146.9	152	160.8	169.7	173.697	197.831	185.983	199.098	214.49	7.7%
Recreation*	110.1	112.2	114.9	117.5	116.9	116.744	118.981	119.298	119.611	120.814	1.0%
Services	170.2	176.9	182.1	187.4	194.3	199.55	205.825	213.848	216.4	221.663	2.4%
Services less rent of shelter***	206.7	217.7	228.1	236	245.1	255.186	264.956	279.747	279.284	285.091	2.1%
Services less medical care services	161	167.1	171.6	176.4	183	187.897	193.626	200.996	202.58	206.977	2.2%
Transportation	151.5	158.3	162.7	171.7	178.6	180.744	199.673	190.166	198.614	207.909	4.7%
Private transportation	149.2	155.8	161	170.6	175.8	177.545	195.539	183.632	195.763	207.305	5.9%
Transportation commodities less motor fuel**									99.382	99.131	-0.3%
Food away from home	153.1	158.4	164.6	171.4	176.4	182.8	187.486	188.895	190.962	198.299	3.8%
Rent of primary residence	137.1	142	143.9	146.6	151.4	156.066	161.824	167.662	172.379	178.164	3.4%
Owners' equivalent rent of residences***	146.9	151.6	154.2	156	160.6	164.008	168.695	173.18	177.842	182.941	2.9%
Energy services	182.3	178.9	196.7	214.2	243.4	277.59	278.2	326.23	281.732	286.995	1.9%
Electricity	174.7	170.9	185.2	191.3	209.6	210.108	213.899	243.79	215.4	228.11	5.9%
Utility (piped) gas service	190.8	188.4	211.5	247.4	293	379.151	372.111	451.134	383.75	376.01	-2.0%
Motor fuel	127.9	147.4	161	186.4	212.5	226.117	296.838	235.287	274.832	318.298	15.8%
Gasoline (all types)	128.2	147.8	161.4	186.9	212.9	226.663	295.777	233.583	276.055	319.346	15.7%
Gasoline, unleaded regular	123.5	142.5	156.1	181.1	206.7	220.11	287.967	226.759	268.459	310.881	15.8%
Gasoline, unleaded midgrade****	123.7	141.8	153.8	177.5	202.1	214.968	278.988	221.516	260.641	300.651	15.4%
Gasoline, unleaded premium	135.2	152.5	163.5	186.6	210.6	223.818	288.775	230.291	269.301	309.605	15.0%

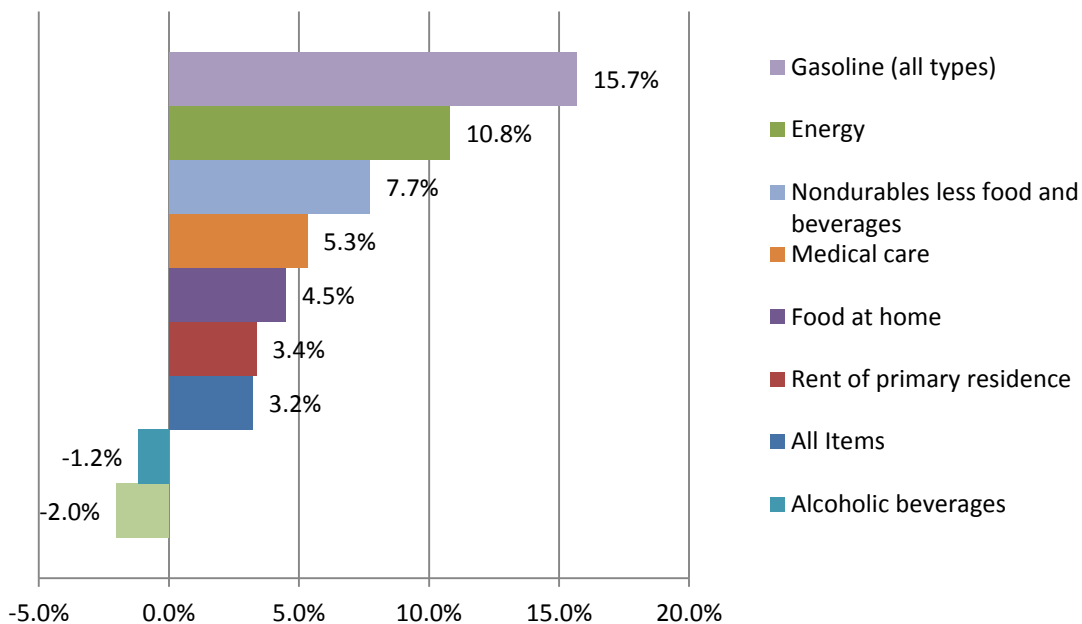
Source: U.S. Department of Labor, Bureau of Labor Statistics

Consumer Price Index Major Categories Anchorage Annual % Change, 2010-2011



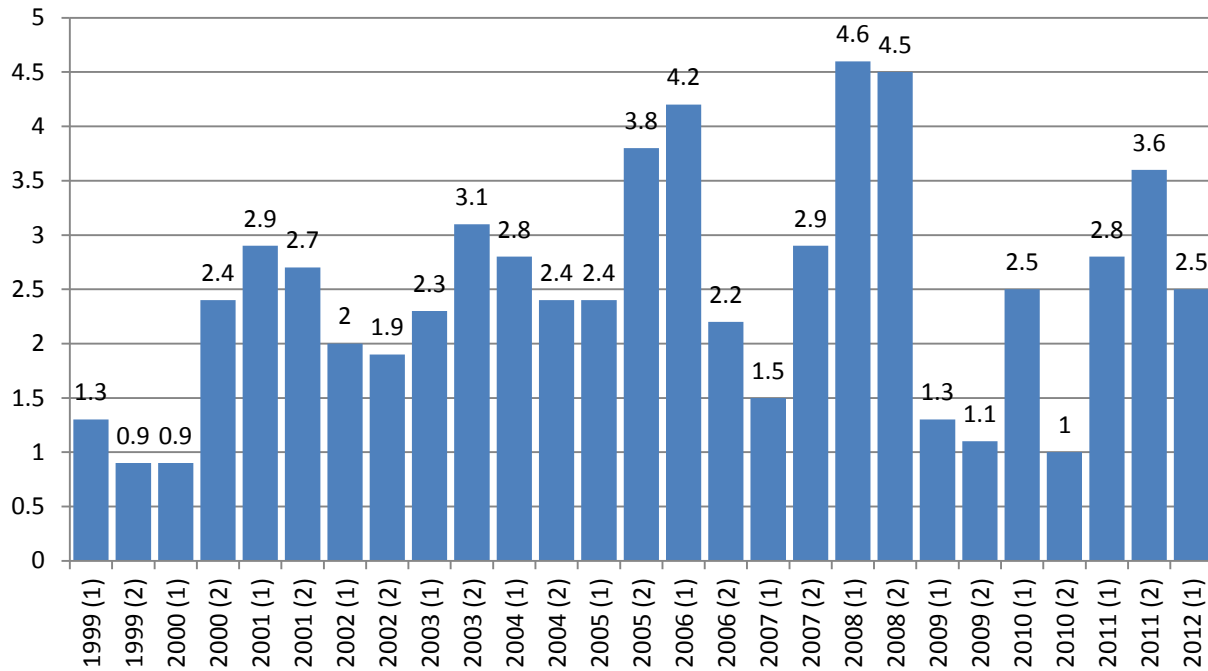
Source: U.S. Department of Labor, Bureau of Labor Statistics

Consumer Price Index for Selected Items, Anchorage Annual % Change, 2010-2011



Source: U.S. Department of Labor, Bureau of Labor Statistics

Anchorage Consumer Price Index Semi-Annual % Change From Prior Year, 1999-2012



Source: U.S. Department of Labor, Bureau of Labor Statistics

Anchorage Consumer Price Index for All Urban Consumers (CPI-U)

Semi-Annual & Annual Averages, 1984-2012

Year	CPI-U Averages, Index: 1982-84= 100			% Change From Prior Year		
	1st Half	2nd Half	Annual	1st Half	2nd Half	Annual
1984	102.7	103.9	103.3			4.1
1985	104.7	106.9	105.8	1.9	2.9	2.4
1986	108.3	107.4	107.8	3.4	0.5	1.9
1987	108.3	108.1	108.2	0	0.7	0.4
1988	108.4	108.9	108.6	0.1	0.7	0.4
1989	110.9	112.5	111.7	2.3	3.3	2.9
1990	116.9	120.4	118.6	5.4	7	6.2
1991	123.3	124.7	124	5.5	3.6	4.6
1992	127.3	129.1	128.2	3.2	3.5	3.4
1993	131.5	132.8	132.2	3.3	2.9	3.1
1994	134.3	135.8	135	2.1	2.3	2.1
1995	138.2	139.5	138.9	2.9	2.7	2.9
1996	141.8	143.7	142.7	2.6	3	2.7
1997	144.1	145.4	144.8	1.6	1.2	1.5
1998	146.7	147	146.9	1.8	1.1	1.5
1999	148.6	148.3	148.4	1.3	0.9	1
2000	150	151.9	150.9	0.9	2.4	1.7
2001	154.4	156	155.2	2.9	2.7	2.8
2002	157.5	159	158.2	2	1.9	1.9
2003	161.1	163.9	162.5	2.3	3.1	2.7
2004	165.6	167.8	166.7	2.8	2.4	2.6
2005	169.6	174.1	171.8	2.4	3.8	3.1
2006	176.7	177.9	177.3	4.2	2.2	3.2
2007	179.394	183.08	181.237	1.5	2.9	2.2
2008	187.659	191.335	189.497	4.6	4.5	4.6
2009	190.032	193.456	191.744	1.3	1.1	1.2
2010	194.834	195.455	195.144	2.5	1	1.8
2011	200.278	202.576	201.427	2.8	3.6	3.2
2012	205.215			2.5		

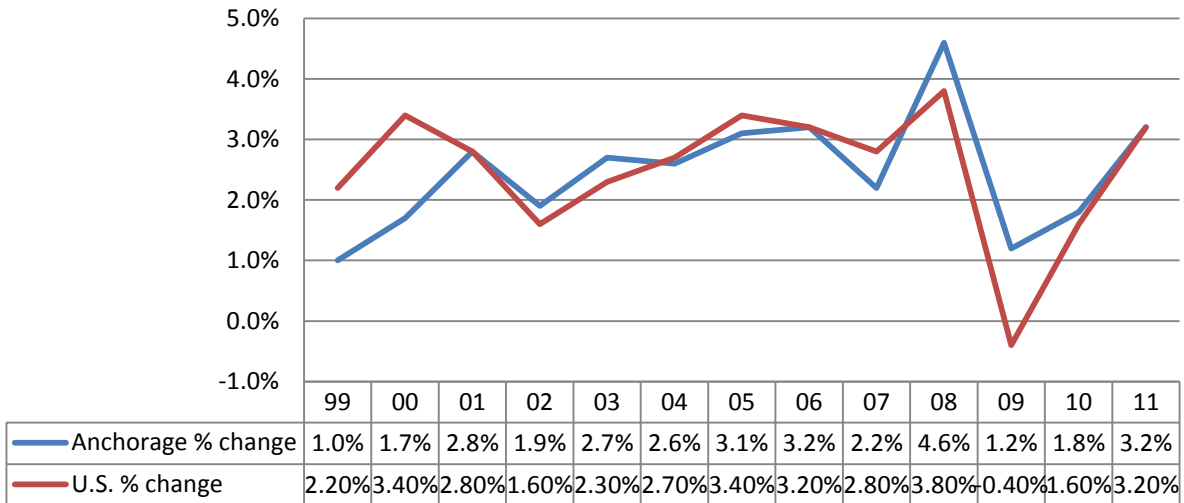
Source: U.S. Department of Labor, Bureau of Labor Statistics

U.S. City Average Consumer Price Index for All Urban Consumers (CPI-U) Index: 1982-84 = 100

Year	All Items		All Items Minus Housing		Housing		Transportation		Food & Beverages		Medical Care		Clothing		Energy	
	Average	% Change	Average	% Change	Average	% Change	Average	% Change	Average	% Change	Average	% Change	Average	% Change	Average	% Change
1983	99.6	3.20%	99.8	3.70%	99.5	2.70%	99.3	2.40%	99.5	2.30%	100.6	8.80%	100.2	2.50%	99.9	0.70%
1984	103.9	4.30%	103.9	4.10%	103.6	4.10%	103.7	4.40%	103.2	3.70%	106.8	6.20%	102.1	1.90%	100.9	1.00%
1985	107.6	3.60%	107	3.00%	107.7	4.00%	106.4	2.60%	105.6	2.30%	113.5	6.30%	105	2.80%	101.6	0.70%
1986	109.6	1.90%	108	0.90%	110.9	3.00%	102.3	-3.90%	109.1	3.30%	122	7.50%	105.9	0.90%	88.2	-13.20%
1987	113.6	3.60%	111.6	3.30%	114.2	3.00%	105.4	3.00%	113.5	4.00%	130.1	6.60%	110.6	4.40%	88.6	0.50%
1988	118.3	4.10%	115.9	3.90%	118.5	3.80%	108.7	3.10%	118.2	4.10%	138.6	6.50%	115.4	4.30%	89.3	0.80%
1989	124	4.80%	121.6	4.90%	123	3.80%	114.1	5.00%	124.9	5.70%	149.3	7.70%	118.6	2.80%	94.3	5.60%
1990	130.7	5.40%	128.2	5.40%	128.5	4.50%	120.5	5.60%	132.1	5.80%	162.8	9.00%	124.1	4.60%	102.1	8.30%
1991	136.2	4.20%	133.5	4.10%	133.6	4.00%	123.8	2.70%	136.8	3.60%	177	8.70%	128.7	3.70%	102.5	0.40%
1992	140.3	3.00%	137.3	2.80%	137.5	2.90%	126.5	2.20%	138.7	1.40%	190.1	7.40%	131.9	2.50%	103	0.50%
1993	144.5	3.00%	141.4	3.00%	141.2	2.70%	130.4	3.10%	141.6	2.10%	201.4	5.90%	133.7	1.40%	104.2	1.20%
1994	148.2	2.60%	144.8	2.40%	144.8	2.50%	134.3	3.00%	144.9	2.30%	211	4.80%	133.4	-0.20%	104.6	0.40%
1995	152.4	2.80%	148.6	2.60%	148.5	2.60%	139.1	3.60%	148.9	2.80%	220.5	4.50%	132	-1.00%	105.2	0.60%
1996	156.9	3.00%	152.8	2.80%	152.8	2.90%	143	2.80%	153.7	3.20%	228.2	3.50%	131.7	-0.20%	110.1	4.70%
1997	160.5	2.30%	155.9	2.00%	156.8	2.60%	144.3	0.90%	157.7	2.60%	234.6	2.80%	132.9	0.90%	111.5	1.30%
1998	163	1.60%	157.2	0.80%	160.4	2.30%	141.6	-1.90%	161.1	2.20%	242.1	3.20%	133	0.10%	102.9	-7.70%
1999	166.6	2.20%	160.2	1.90%	163.9	2.20%	144.4	2.00%	164.6	2.20%	250.6	3.50%	131.3	-1.30%	106.6	3.60%
2000	172.2	3.40%	165.7	3.40%	169.6	3.50%	153.3	6.20%	168.4	2.30%	260.8	4.10%	129.6	-1.30%	124.6	16.90%
2001	177.1	2.80%	169.7	2.40%	176.4	4.00%	154.3	0.70%	173.6	3.10%	272.8	4.60%	127.3	-1.80%	129.3	3.80%
2002	179.9	1.60%	170.8	0.60%	180.3	2.20%	152.9	-1.00%	176.8	1.80%	285.6	4.70%	124	-2.60%	121.7	-5.90%
2003	184	2.30%	174.6	2.20%	184.8	2.50%	157.6	3.10%	180.5	2.10%	297.1	4.00%	120.9	-2.50%	136.5	12.20%
2004	188.9	2.70%	179.3	2.70%	189.5	2.50%	163.1	3.50%	186.6	3.40%	310.1	4.40%	120.4	-0.40%	151.4	10.90%
2005	195.3	3.40%	186.1	3.80%	195.7	3.30%	173.9	6.60%	191.2	2.50%	323.2	4.20%	119.5	-0.10%	177.1	17.00%
2006	201.6	3.20%	191.9	3.10%	203.2	3.80%	180.9	4.00%	195.7	2.40%	336.2	4.00%	119.5	0.00%	196.9	11.20%
2007	207.3	2.80%	196.6	2.50%	209.6	3.10%	184.7	2.10%	203.3	3.90%	351.1	4.40%	119	-0.40%	207.7	5.50%
2008	215.3	3.80%	205.5	4.50%	216.3	2.20%	195.5	5.90%	214.2	5.40%	364.1	3.70%	118.9	-0.10%	236.7	13.90%
2009	214.5	-0.40%	203.3	-1.00%	217.1	0.40%	179.3	-8.30%	218.2	1.90%	375.6	3.20%	120.1	1.00%	193.1	-18.40%
2010	218.1	1.60%	208.6	2.60%	216.3	-0.40%	193.4	7.90%	220	0.80%	388.4	3.40%	119.5	-0.50%	211.4	9.50%
2011	224.9	3.20%	217	4.00%	219.1	1.30%	212.4	9.80%	227.9	3.60%	400.3	3.00%	122.1	2.20%	243.9	15.40%

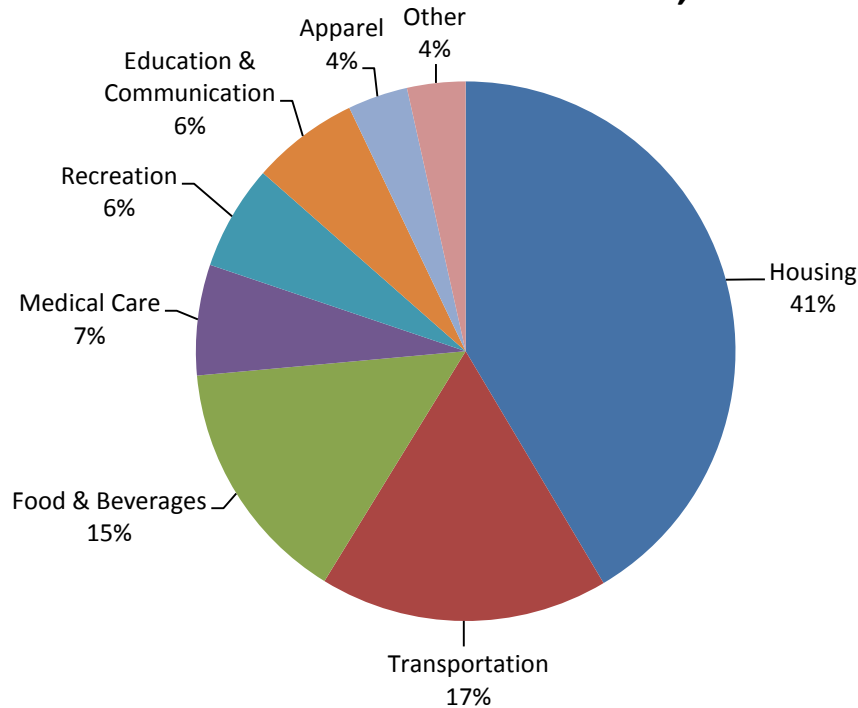
Source: U.S. Department of Labor, Bureau of Labor Statistics

Consumer Price Index for All Items Average Annual % Change for U.S. & Anchorage, 1999-2011



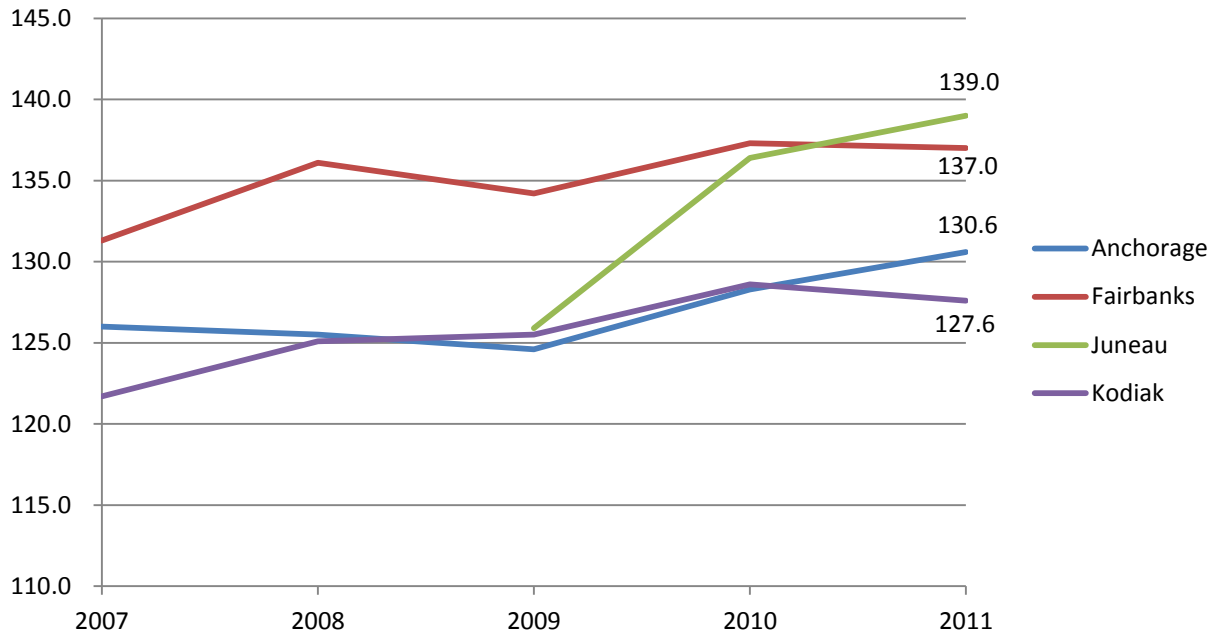
Source: U.S. Department of Labor, Bureau of Labor Statistics

Relative Importance of CPI Components U.S. All Urban Consumers, 2010



Source: U.S. Department of Labor, Bureau of Labor Statistics

Cost of Living Index for Select Alaskan Cities, 2007-2011 (U.S. Average = 100)



Source: The Council for Community and Economic Research