

# Anchorage Birth & Mortality Data



**Table of Contents:**

Anchorage Resident Births, 2000-09 .....57

U.S. & Anchorage Birth Rates, 2000-09 .....57

Birth Statistics for Anchorage, 2000-2009.....58

Births by Race of Mother, Anchorage Municipality, 2010 .....59

% of Anchorage Births by Age of Mother, 2000-09.....60

% of Anchorage Births by Mother’s Educational Attainment, 2000-2009.....60

Births by Facility, Anchorage Municipality, 2010.....61

Total Adoptions, Anchorage, 1990-2010.....62

Adoptions by Parental Status, Anchorage Municipality, 2010 .....62

Adoptions in the Anchorage Municipality by Age of Child, 2010.....63

Adoptions by Race of Child’s Mother, Anchorage Municipality, 2010.....64

Total Anchorage Deaths, 2000-2009.....65

Anchorage Resident Deaths by Age, 2000-2010 .....65

Anchorage & U.S. Crude Death Rates, 2000-2009 .....66

Anchorage Resident Total Deaths by Sex, 2000-2009.....66

% of Total Deaths, Anchorage Persons 65 & Older, 2000-2010.....67

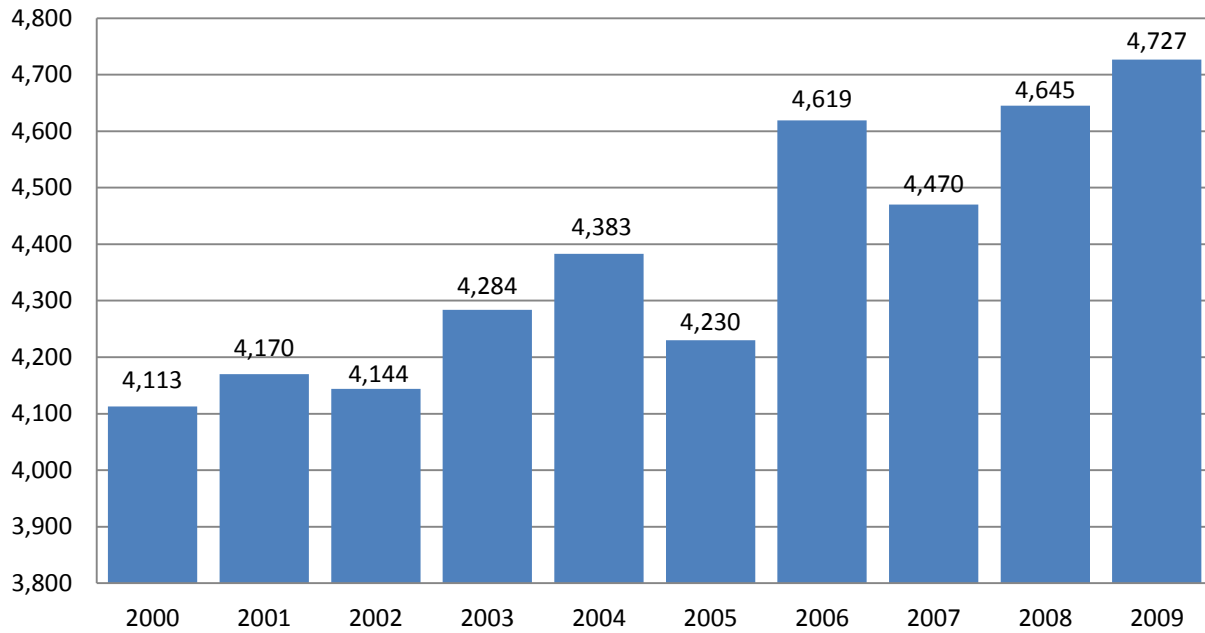
Top Five Causes of Death, Anchorage, 2009 .....67

Accidental Deaths by Race, Anchorage, 2010 .....68

Homicide Deaths by Race, Anchorage, 2010 .....68

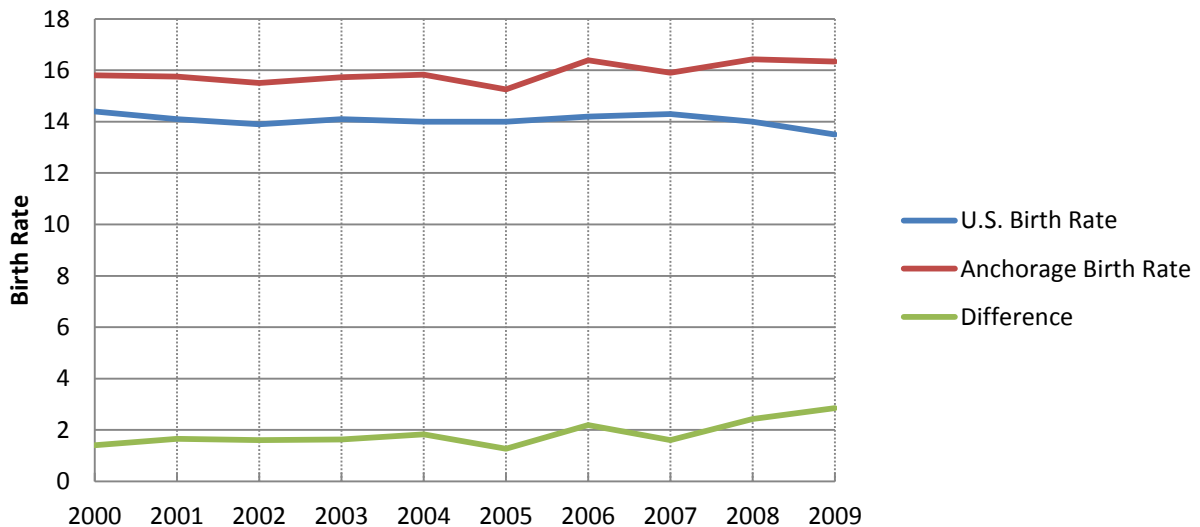
Suicide Deaths by Race, Anchorage, 2010 .....69

## Anchorage Resident Births, 2000-09



Source: Alaska Department of Health & Social Services, Division of Public Health, Bureau of Vital Statistics

## U.S. & Anchorage Birth Rates, 2000-09 (Births per 1,000 Residents)



Source: Alaska Department of Health & Social Services, Division of Public Health, Bureau of Vital Statistics

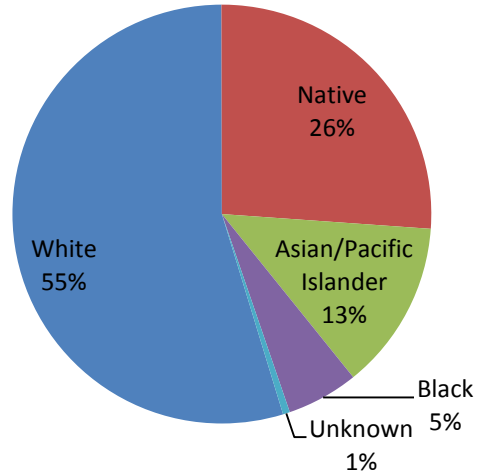
## Birth Statistics for Anchorage, 2000-2009

Year	Anchorage Resident Births	Birth Rates (# per 1,000 people)		Birth by Race			Births By Age Of Mother							
		U.S.	Anchorage	White	Native	Other	<15	15-19	20-24	25-29	30-34	35-39	40-44	45+
2009	4727	13.5	16.3	2,930	721	1,076	3	396	1,296	1,393	1,018	496	113	9
2008	4645	14	16.4	2,943	721	981	2	399	1,259	1,375	957	506	132	10
2007	4470	14.3	15.9	2,797	698	975	3	425	1,278	1,292	882	482	100	8
2006	4619	14.2	16.4	2,913	698	1,008	4	445	1,325	1,300	898	519	117	11
2005	4230	14	15.3	2,701	648	881	3	401	1,203	1,130	911	450	123	7
2004	4383	14	15.8	2,924	624	835	4	392	1,216	1,183	959	498	120	8
2003	4284	14.1	15.7	2,798	672	814	4	400	1,260	1,103	921	461	119	14
2002	4144	13.9	15.5	2,762	558	824	5	421	1,148	1,032	958	444	124	5
2001	4170	14.1	15.8	2,833	579	758	5	405	1,115	1,106	930	485	111	10
2000	4113	14.4	15.8	2,775	574	764	6	469	1,066	1,127	886	439	114	3

Year	Mother's Educational Attainment				Births By Facility					Risk Factors		
	<12 Years	12 Years	12+ Years	Unknown	Birthing		Home Birth	Other Facility	Outside AK	Reported	Reported	Unwed
					Hospital	Center				Drinking	Smoking	
2009	504	1,545	2,493	185	4,500	100	63	36	28	3.9%	10.8%	35.4%
2008	593	2,019	1,930	103	4,457	86	52	23	27	3.1%	11.5%	34.9%
2007	565	1,656	2,176	73	4,310	73	58	4	25	2.4%	11.2%	35.2%
2006	617	1,720	2,228	54	4,445	79	78	3	14	2.5%	12.0%	34.1%
2005	604	1,502	2,058	66	4,058	89	60	10	13	2.3%	12.5%	34.8%
2004	516	1,537	1,894	436	4,214	79	71	0	19	1.6%	11.7%	32.5%
2003	545	1,513	2,090	136	4,143	64	58	0	19	1.8%	15.1%	33.2%
2002	553	1,645	1,738	208	4,006	66	54	0	18	2.5%	13.9%	33.0%
2001	513	1,695	1,887	75	4,025	79	43	0	23	2.3%	14.1%	30.6%
2000	517	1,475	2,034	87	3,962	80	45	3	23	2.2%	14.5%	31.8%

Source: Alaska Department of Health & Social Services, Division of Public Health, Bureau of Vital Statistics

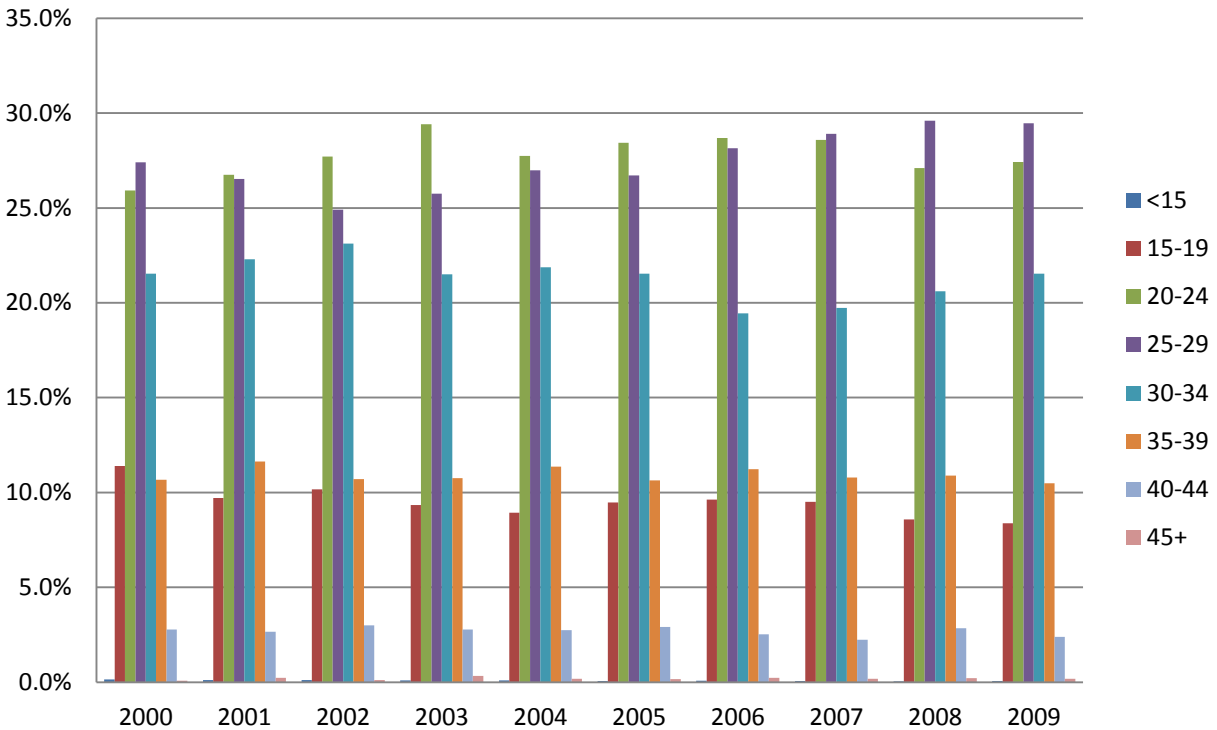
## Births by Race of Mother, Anchorage Municipality, 2010



<b>Mother's Race</b>	<b># of Births</b>	<b>Total Births</b>	<b>Percentage</b>
White	3,272	5,983	54.7%
Native	1,565	5,983	26.2%
Asian/Pacific Islander	783	5,983	13.4%
Black	331	5,983	5.5%
Unknown	32	5,983	0.5%

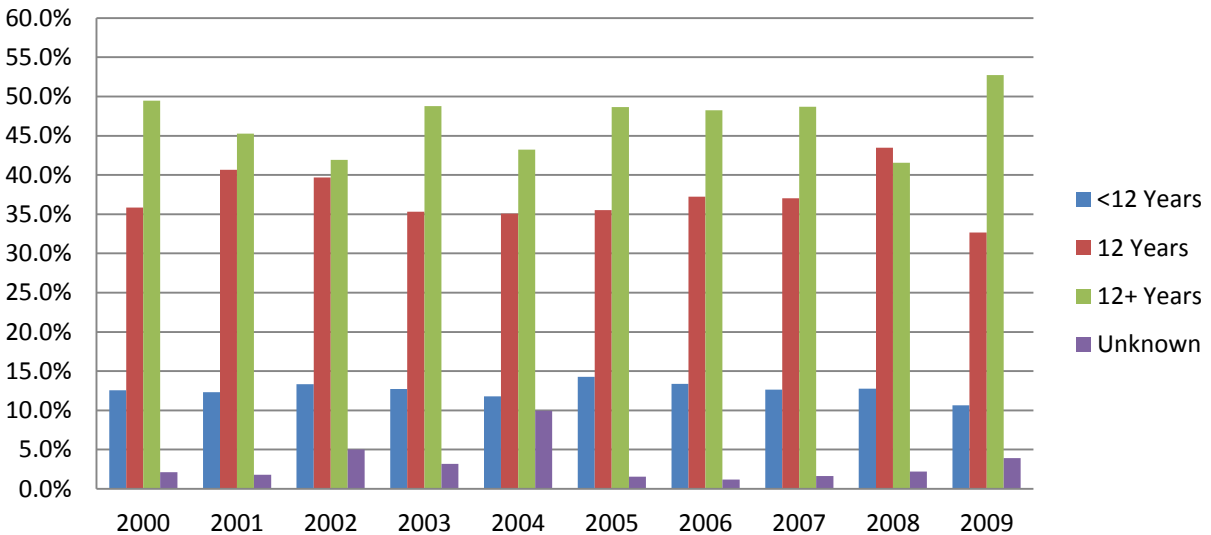
Source: Alaska Department of Health & Social Services, Division of Public Health, Bureau of Vital Statistics

## % of Anchorage Births By Age of Mother, 2000-09



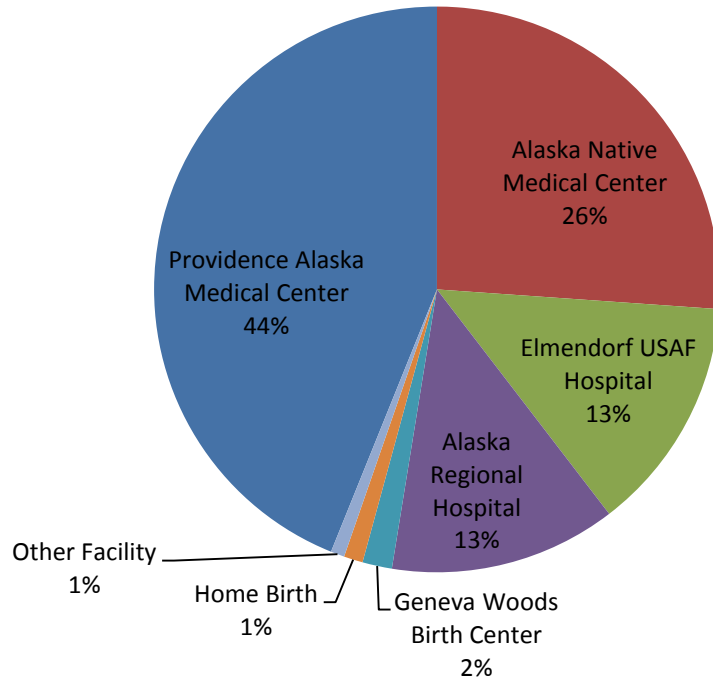
Source: Alaska Department of Health & Social Services, Division of Public Health, Bureau of Vital Statistics

## % of Anchorage Births by Mother's Educational Attainment, 2000-2009



Source: Alaska Department of Health & Social Services, Division of Public Health, Bureau of Vital Statistics

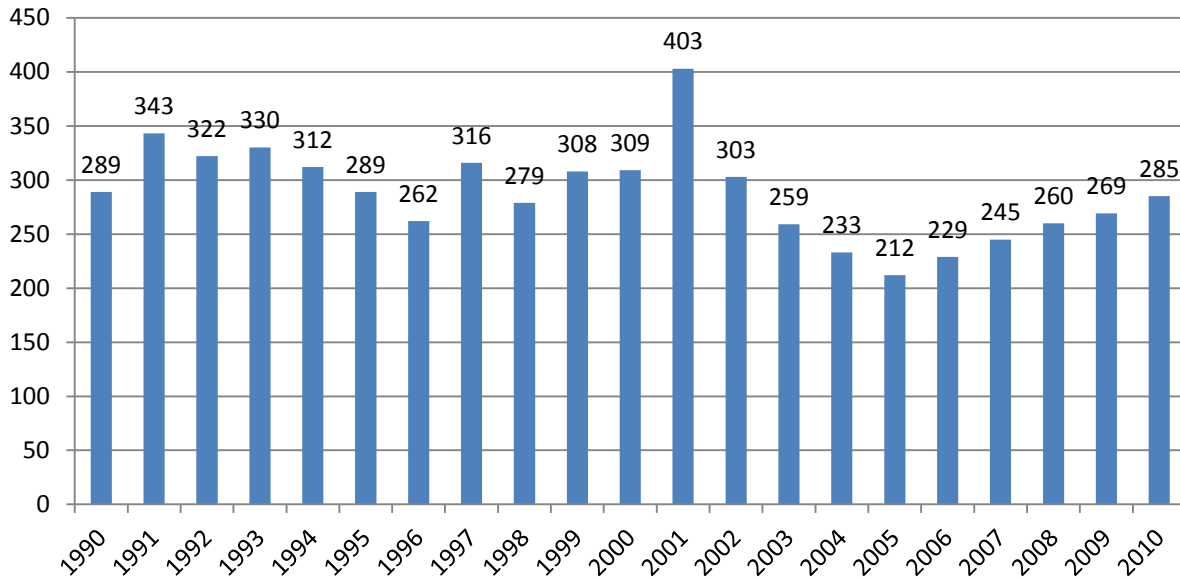
## Births by Facility, Anchorage Municipality, 2010



<b>Facility Name</b>	<b># of Births</b>	<b>Total Births</b>	<b>Percentage</b>
Providence Alaska Medical Center	2,626	5,983	43.9%
Alaska Native Medical Center	1,562	5,983	26.1%
Elmendorf USAF Hospital	806	5,983	13.5%
Alaska Regional Hospital	776	5,983	13.0%
Geneva Woods Birth Center	101	5,983	1.7%
Home Birth	65	5,983	1.1%
Other Facility	47	5,983	0.8%

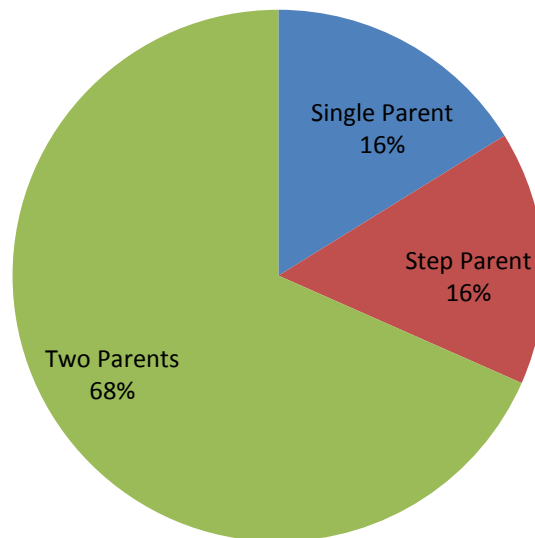
Source: Alaska Department of Health & Social Services, Division of Public Health, Bureau of Vital Statistics

## Total Adoptions Anchorage, 1990-2010



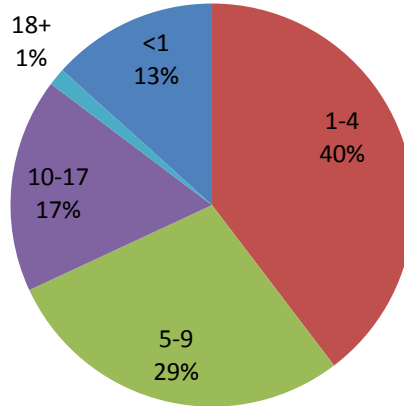
Source: Alaska Department of Health & Social Services, Division of Public Health, Bureau of Vital Statistics

## Adoptions by Parental Status, Anchorage Municipality, 2010



Source: Alaska Department of Health & Social Services, Division of Public Health, Bureau of Vital Statistics

## Adoptions in the Anchorage Municipality by Age of Child, 2010

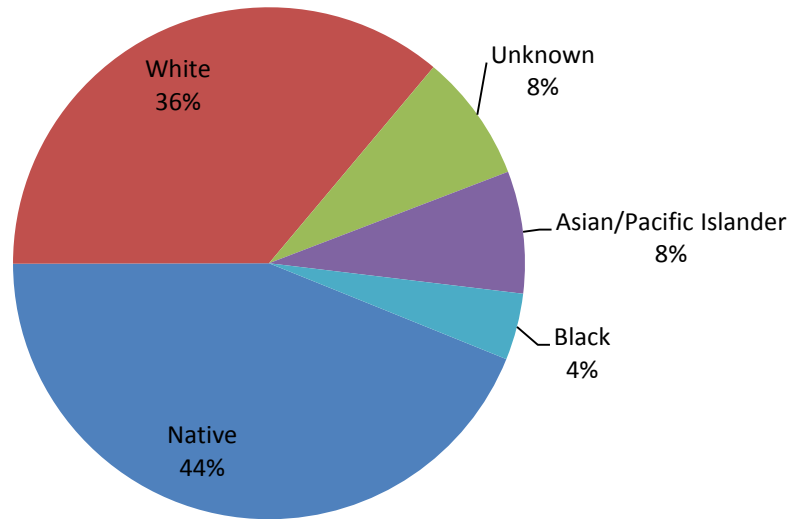


Age Group	Adoptions	Total Adoptions	Percentage
<1	38	285	13.3%
1-4	113	285	39.6%
5-9	81	285	28.4%
10-17	49	285	17.2%
18+	4	285	1.4%

Source: Alaska Department of Health & Social Services, Division of Public Health, Bureau of Vital Statistics



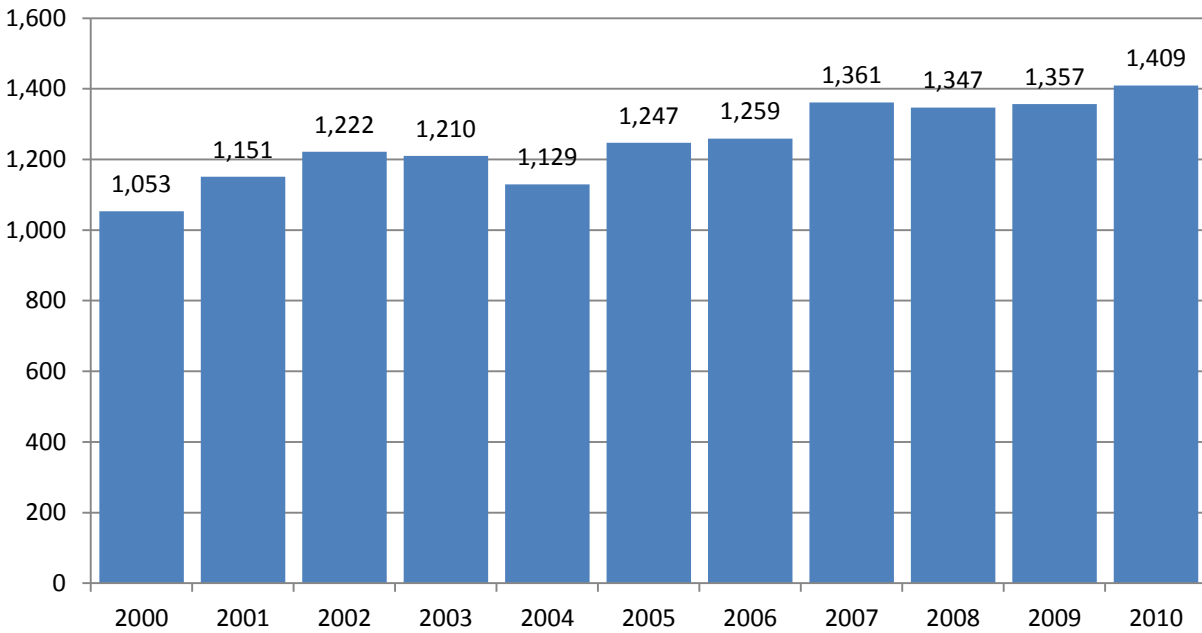
## Adoptions by Race of Child's Mother, Anchorage Municipality, 2010



<b>Natural Mother's Race</b>	<b># of Adoptions</b>	<b>Total Area Adoptions</b>	<b>Percentage</b>
Native	125	285	43.9%
White	103	285	36.1%
Unknown	23	285	8.1%
Asian/Pacific Islander	22	285	7.7%
Black	12	285	4.2%

Source: Alaska Department of Health & Social Services, Division of Public Health, Bureau of Vital Statistics

## Anchorage Deaths, 2000-2010



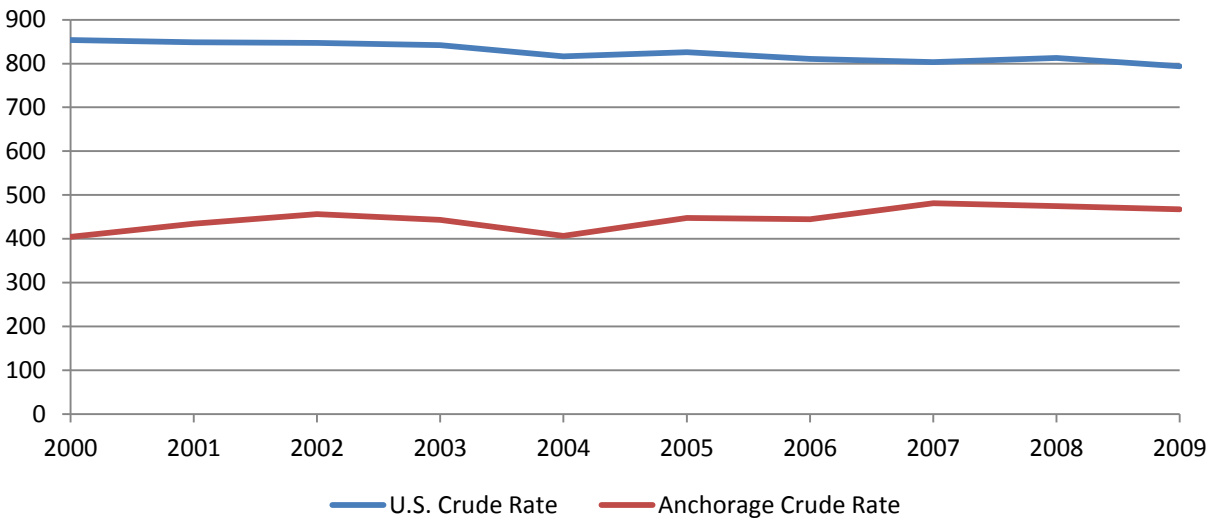
Source: Alaska Department of Health & Social Services, Division of Public Health, Bureau of Vital Statistics

## Anchorage Resident Deaths by Age, 2000-2010

Age	2000	2001	2002	2003	2004	2005	2006	2007	2008	2009	2010
00-04	23	40	22	22	31	31	35	26	30	31	24
05-14	6	10	10	15	10	9	8	7	6	4	2
15-24	28	29	27	38	49	39	45	48	28	30	41
25-34	50	54	46	48	45	44	46	49	49	60	58
35-44	85	103	129	86	83	86	80	84	84	73	72
45-54	139	165	183	148	156	151	160	200	176	205	177
55-64	166	170	194	213	174	213	192	216	242	209	229
65-74	171	204	192	195	190	216	228	217	249	244	247
75-84	248	237	270	281	236	275	258	301	268	281	273
85+	137	139	149	164	155	183	207	214	215	220	285
Unknown	0	0	0	0	0	0	0	0	0	0	1

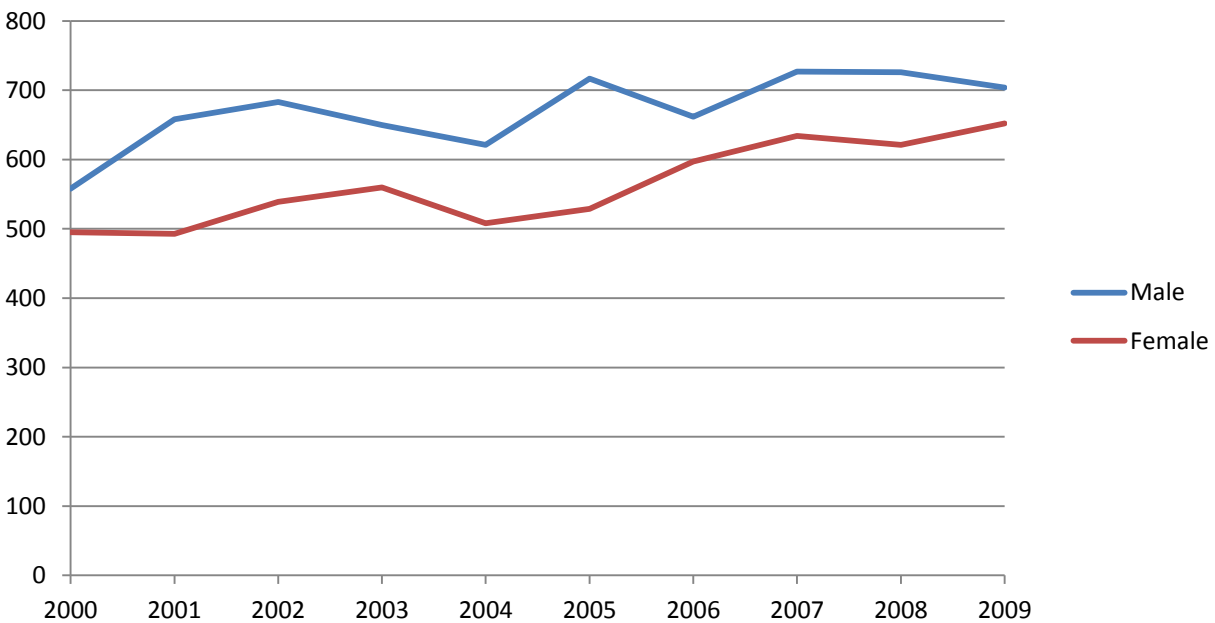
Source: Alaska Department of Health & Social Services, Division of Public Health, Bureau of Vital Statistics

## Anchorage & U.S. Crude Death Rates, 2000-2009 (CDR= Deaths per 100,000 People)



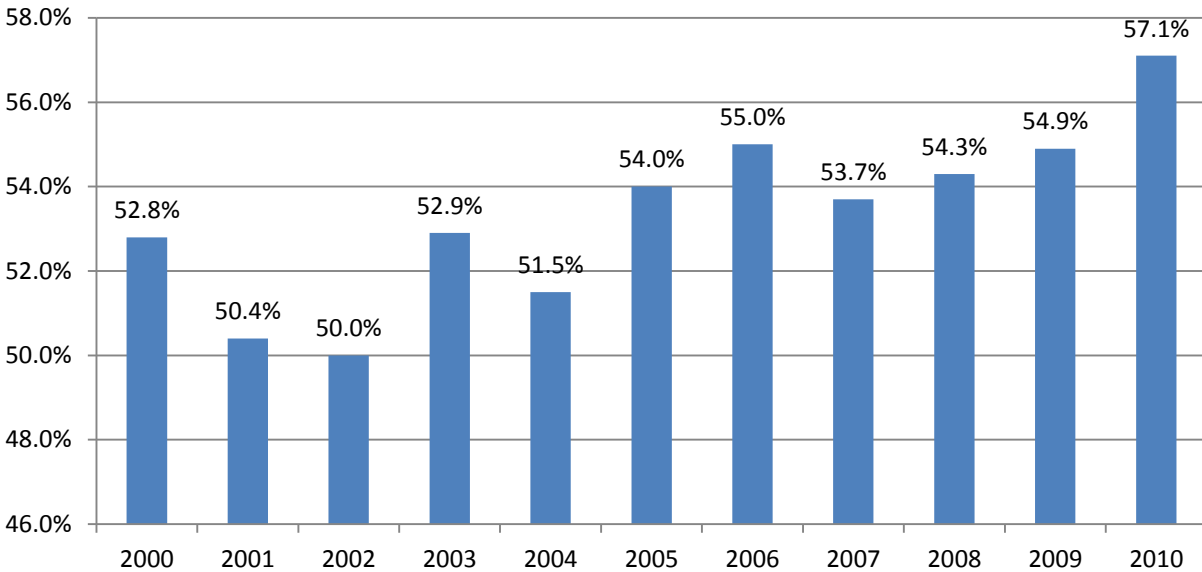
Sources: Alaska Department of Health & Social Services, Division of Public Health, Bureau of Vital Statistics, Centers for Disease Control and Prevention, National Center for Health Statistics

## Anchorage Resident Total Deaths by Sex, 2000-2009



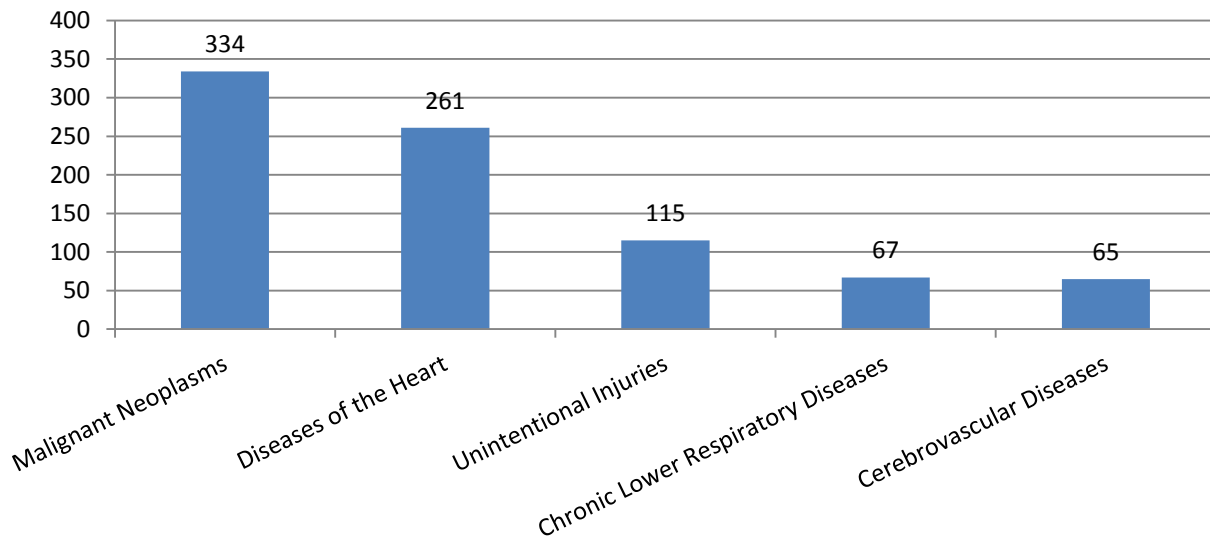
Source: Alaska Department of Health & Social Services, Division of Public Health, Bureau of Vital Statistics

## % of Total Deaths, Anchorage Persons 65 & Older, 2000-2010



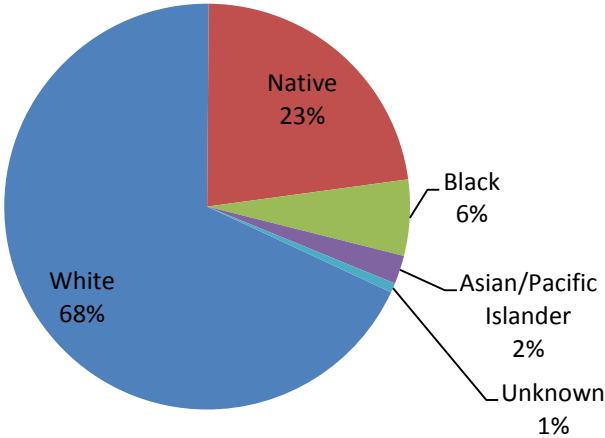
Source: Alaska Department of Health & Social Services, Division of Public Health, Bureau of Vital Statistics

## Top Five Causes of Death Anchorage, 2009 (64% of 1,357 Total Deaths)



Source: Alaska Department of Health & Social Services, Division of Public Health, Bureau of Vital Statistics

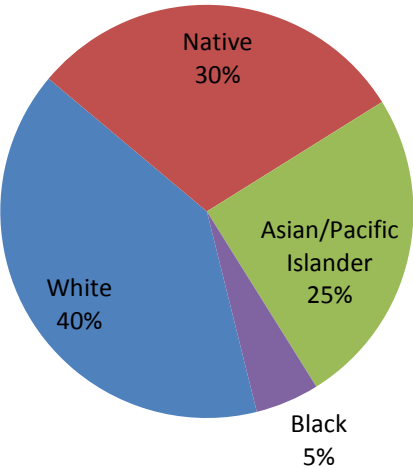
# Accidental Deaths by Race, Anchorage, 2010



**132 Total**

Source: Alaska Department of Health & Social Services, Division of Public Health, Bureau of Vital Statistics

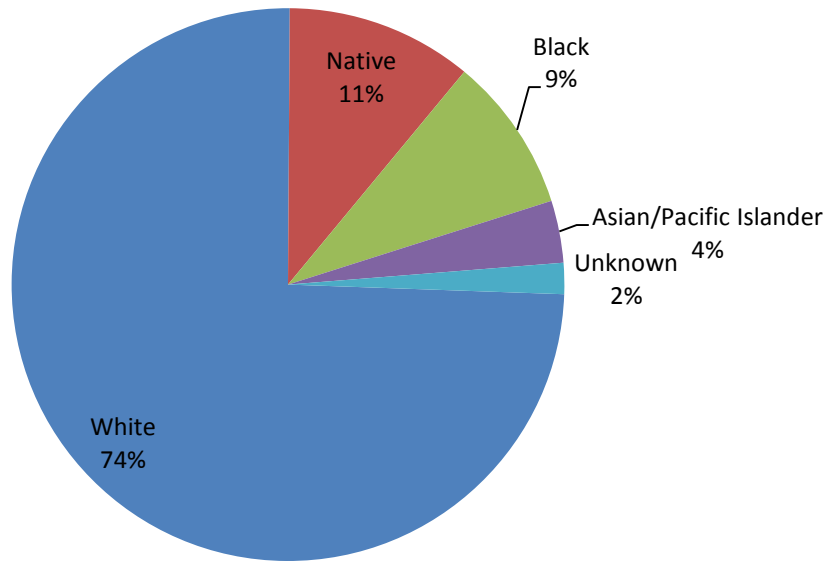
# Homicide Deaths by Race, Anchorage, 2010



**20 Total**

Source: Alaska Department of Health & Social Services, Division of Public Health, Bureau of Vital Statistics

## Suicide Deaths by Race, Anchorage, 2010



**55 Total**

Source: Alaska Department of Health & Social Services, Division of Public Health, Bureau of Vital Statistics