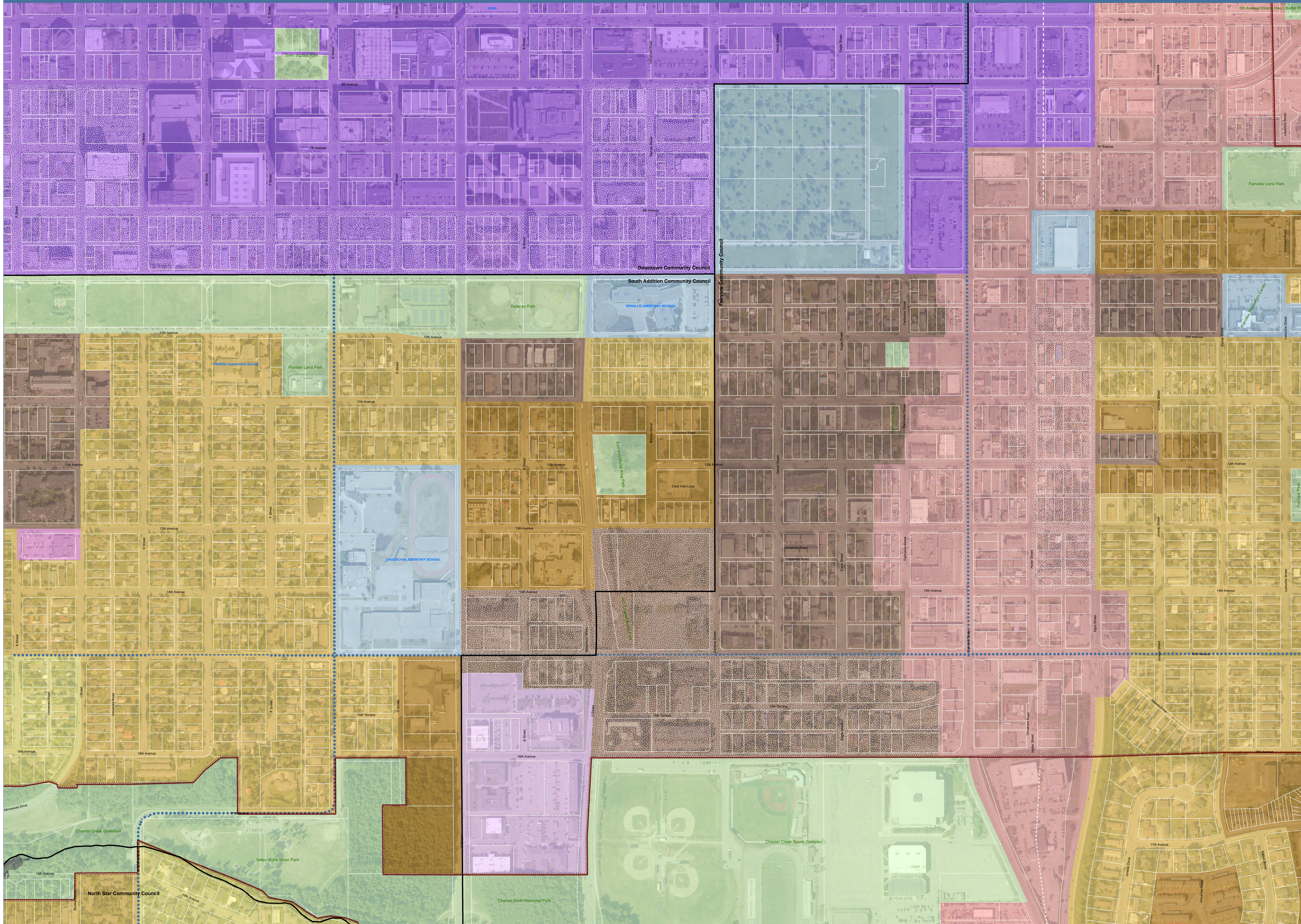
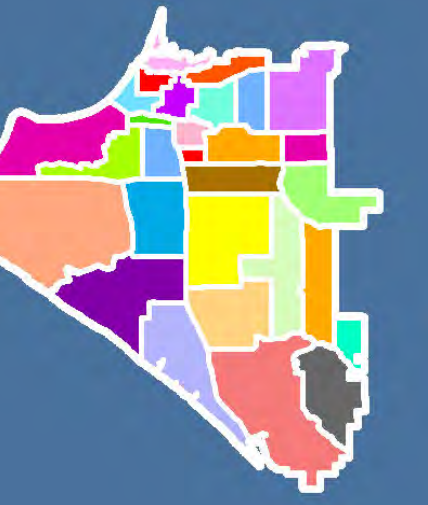


Regional Workshop - Focus Area 1: Downtown, Fairview, South Addition

March 15th, 2016

Anchorage Bowl Land Use Plan Map



Neighborhoods

- Large Lot Residential**
0 - 1 dwellings per acre;
1 - 3 dwellings per acre in areas specified in Hillside District Plan
- Single Family and Two Family**
3 - 5 dwellings per acre
5 - 8 dwellings per acre in areas that allow attached dwellings
- Compact Mixed Housing**
8 - 15 dwellings per acre
- Multifamily**
15 - 35 dwellings per acre
- High Intensity Urban**
> 35 dwellings per acre

Centers

Residential Housing Units Allowed

- Neighborhood Center
- Town Center
- Regional Commercial Center
- City Center

Corridors

Residential Housing Units Allowed

- Commercial Corridor
- Main Street Corridor
- Office - Low Intensity

Open Spaces

- Park or Natural Area
- Other Open Space
- Public Facility / Natural Area

Community Facilities

- Community Facility or Institution
- School
- Utility / Facility

Anchor Institutions and Facilities

- University or Medical Center
- Airport, Railroad or Port Facility
- Commuter Rail Station

Industrial Employment Areas

- Light Industrial / Commercial
- Industrial

Growth Supporting Features

- Transit Supportive Development Corridor
- Greenway Supported Development
- Residential Mixed-use Development
(White dots over base land use color)
- Traditional Neighborhood Design