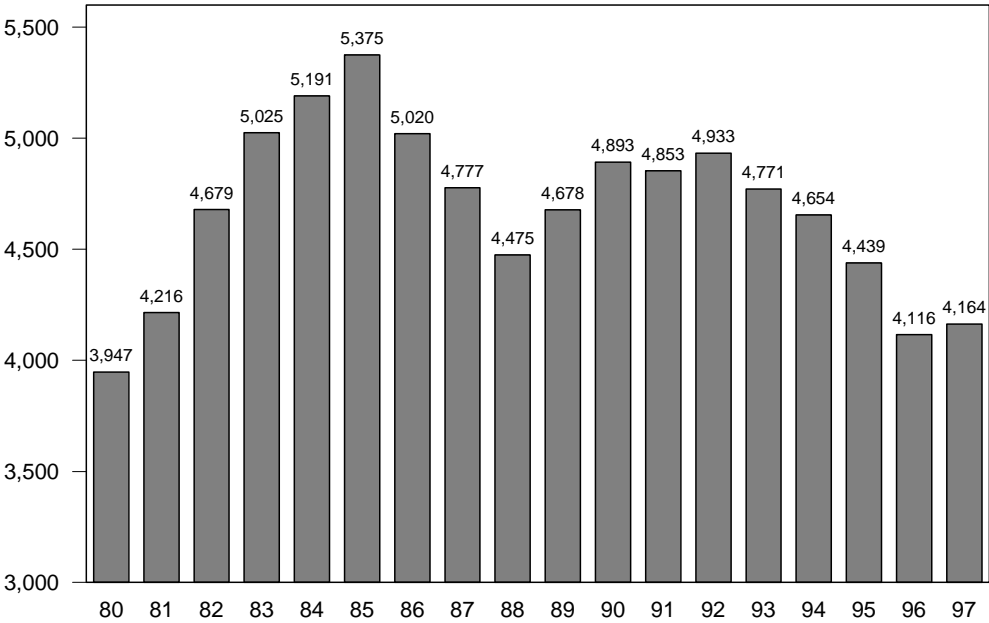


Anchorage Resident Births

1980 to 1997

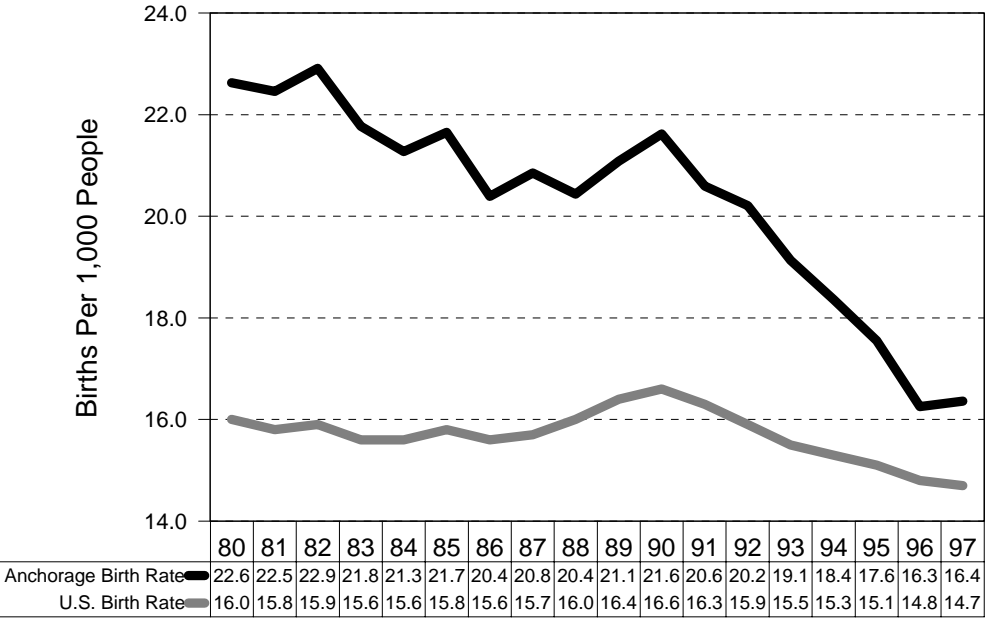


Source: Alaska Department of Health & Social Services, Division of Public Health, Bureau of Vital Statistics. (Updated 3/9/99)

Population Vital Stats #3

Anchorage & U.S. Birth Rates*

1980 to 1997



Sources: Alaska Department of Health & Social Services, Division of Public Health, Bureau of Vital Statistics; National Center for Health Statistics. *Birth Rate = Number of births per 1,000 people. (Updated 3/9/99)

Population Vital Stats #4

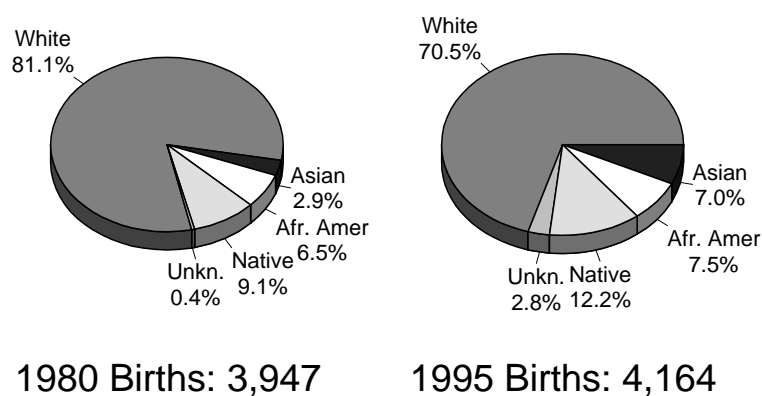
**Births by Race, Ethnicity & Sex
Anchorage 1980-1997**

| Year | Births by Race | | | | | Births by Hispanic Origin | | | Births by Sex | | |
|------|----------------|--------------------|---------------------|-----------------------|------|------------------------------|-------|------|---------------|--------|-------|
| | White | Native American | African American | Asian/ Pacific Is. | Unk | Yes | No | Unk | Male | Female | Total |
| 1980 | 3,200 | 360 | 258 | 113 | 16 | N/A | N/A | N/A | 1,999 | 1,948 | 3,947 |
| 1981 | 3,501 | 331 | 235 | 133 | 16 | N/A | N/A | N/A | 2,237 | 1,979 | 4,216 |
| 1982 | 3,855 | 354 | 279 | 153 | 38 | N/A | N/A | N/A | 2,424 | 2,255 | 4,679 |
| 1983 | 4,060 | 413 | 295 | 180 | 77 | N/A | N/A | N/A | 2,534 | 2,491 | 5,025 |
| 1984 | 4,269 | 416 | 285 | 192 | 29 | N/A | N/A | N/A | 2,692 | 2,499 | 5,191 |
| 1985 | 4,391 | 392 | 326 | 237 | 29 | N/A | N/A | N/A | 2,733 | 2,642 | 5,375 |
| 1986 | 4,063 | 383 | 330 | 235 | 9 | N/A | N/A | N/A | 2,578 | 2,442 | 5,020 |
| 1987 | 3,764 | 451 | 306 | 249 | 7 | N/A | N/A | N/A | 2,415 | 2,362 | 4,777 |
| 1988 | 3,441 | 477 | 311 | 244 | 2 | N/A | N/A | N/A | 2,274 | 2,201 | 4,475 |
| 1989 | 3,564 | 514 | 347 | 249 | 4 | 158 | 4,514 | 6 | 2,396 | 2,282 | 4,678 |
| 1990 | 3,762 | 538 | 352 | 234 | 7 | 183 | 4,710 | - | 2,454 | 2,439 | 4,893 |
| 1991 | 3,667 | 572 | 331 | 277 | 6 | 194 | 4,658 | 1 | 2,506 | 2,347 | 4,853 |
| 1992 | 3,707 | 540 | 359 | 322 | 5 | 205 | 4,726 | 2 | 2,569 | 2,364 | 4,933 |
| 1993 | 3,575 | 517 | 379 | 297 | 3 | 257 | 4,511 | 3 | 2,400 | 2,371 | 4,771 |
| 1994 | 3,478 | 515 | 323 | 268 | 70 | 317 | 4,316 | 21 | 2,379 | 2,275 | 4,654 |
| 1995 | 3,292 | 537 | 313 | 289 | 8 | N/A | N/A | N/A | 2,253 | 2,186 | 4,439 |
| 1996 | 3,025 | 516 | 285 | 281 | 9 | N/A | N/A | N/A | 2,078 | 2,038 | 4,116 |
| 1997 | 2,937 | 508 | 311 | 290 | 118 | N/A | N/A | N/A | 2,106 | 2,058 | 4,164 |
| 1980 | 81.1% | 9.1% | 6.5% | 2.9% | 0.4% | N/A | N/A | N/A | 50.6% | 49.4% | 100% |
| 1981 | 83.0% | 7.9% | 5.6% | 3.2% | 0.4% | N/A | N/A | N/A | 53.1% | 46.9% | 100% |
| 1982 | 82.4% | 7.6% | 6.0% | 3.3% | 0.8% | N/A | N/A | N/A | 51.8% | 48.2% | 100% |
| 1983 | 80.8% | 8.2% | 5.9% | 3.6% | 1.5% | N/A | N/A | N/A | 50.4% | 49.6% | 100% |
| 1984 | 82.2% | 8.0% | 5.5% | 3.7% | 0.6% | N/A | N/A | N/A | 51.9% | 48.1% | 100% |
| 1985 | 81.7% | 7.3% | 6.1% | 4.4% | 0.5% | N/A | N/A | N/A | 50.8% | 49.2% | 100% |
| 1986 | 80.9% | 7.6% | 6.6% | 4.7% | 0.2% | N/A | N/A | N/A | 51.4% | 48.6% | 100% |
| 1987 | 78.8% | 9.4% | 6.4% | 5.2% | 0.1% | N/A | N/A | N/A | 50.6% | 49.4% | 100% |
| 1988 | 76.9% | 10.7% | 6.9% | 5.5% | 0.0% | N/A | N/A | N/A | 50.8% | 49.2% | 100% |
| 1989 | 76.2% | 11.0% | 7.4% | 5.3% | 0.1% | 3.4% | 96.5% | 0.1% | 51.2% | 48.8% | 100% |
| 1990 | 76.9% | 11.0% | 7.2% | 4.8% | 0.1% | 3.7% | 96.3% | 0.0% | 50.2% | 49.8% | 100% |
| 1991 | 75.6% | 11.8% | 6.8% | 5.7% | 0.1% | 4.0% | 96.0% | 0.0% | 51.6% | 48.4% | 100% |
| 1992 | 75.1% | 10.9% | 7.3% | 6.5% | 0.1% | 4.2% | 95.8% | 0.0% | 52.1% | 47.9% | 100% |
| 1993 | 74.9% | 10.8% | 7.9% | 6.2% | 0.1% | 5.4% | 94.6% | 0.1% | 50.3% | 49.7% | 100% |
| 1994 | 74.7% | 11.1% | 6.9% | 5.8% | 1.5% | 6.8% | 92.7% | 0.5% | 51.1% | 48.9% | 100% |
| 1995 | 74.2% | 12.1% | 7.1% | 6.5% | 0.2% | N/A | N/A | N/A | 50.8% | 49.2% | 100% |
| 1996 | 73.5% | 12.5% | 6.9% | 6.8% | 0.2% | N/A | N/A | N/A | 50.5% | 49.5% | 100% |
| 1997 | 70.5% | 12.2% | 7.5% | 7.0% | 2.8% | N/A | N/A | N/A | 50.6% | 49.4% | 100% |

Source: Alaska Dept. of Health & Social Service, Div. of Public Health, Bureau of Vital Statistics. (Revised 3/10/99)

Births by Race of the Mother

Anchorage - 1980 & 1997 Comparison

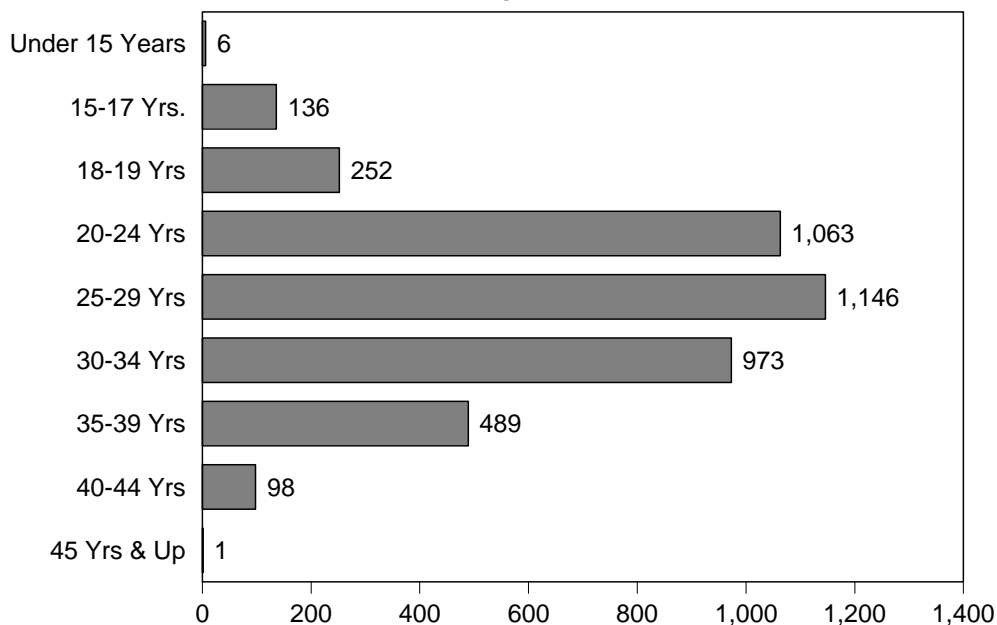


Source: Alaska Department of Health & Social Services, Division of Public Health, Bureau of Vital Statistics. (Updated 3/9/99)

Population Vital Stats #11

Births by Age of the Mother

Anchorage - 1997

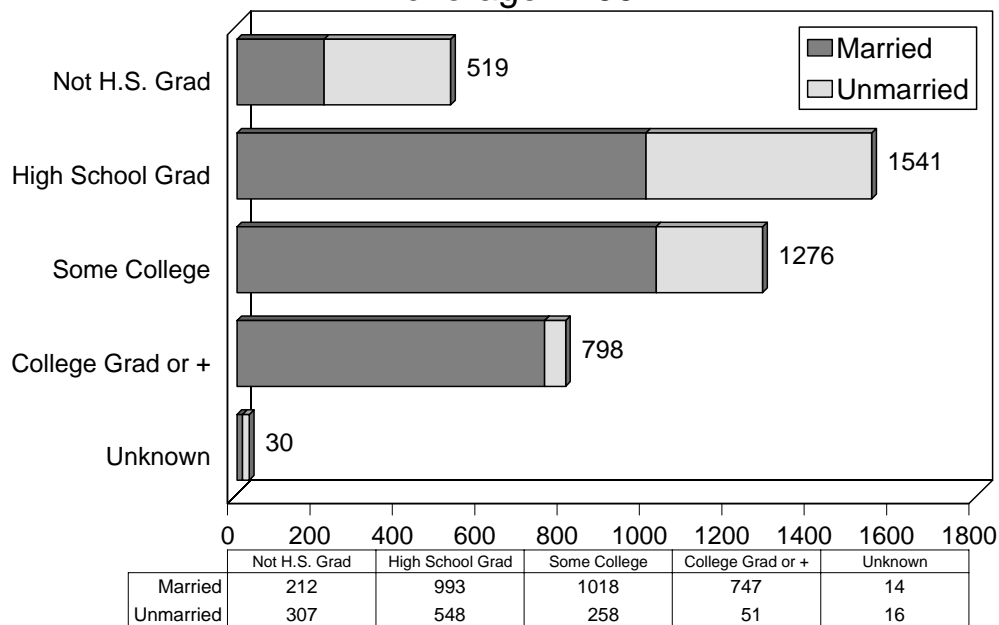


Source: "Alaska Bureau of Vital Statistics, 1994 Annual Report," Alaska Department of Health & Social Services.

Population Vital Stats #12

Births by Education of the Mother

Anchorage - 1997

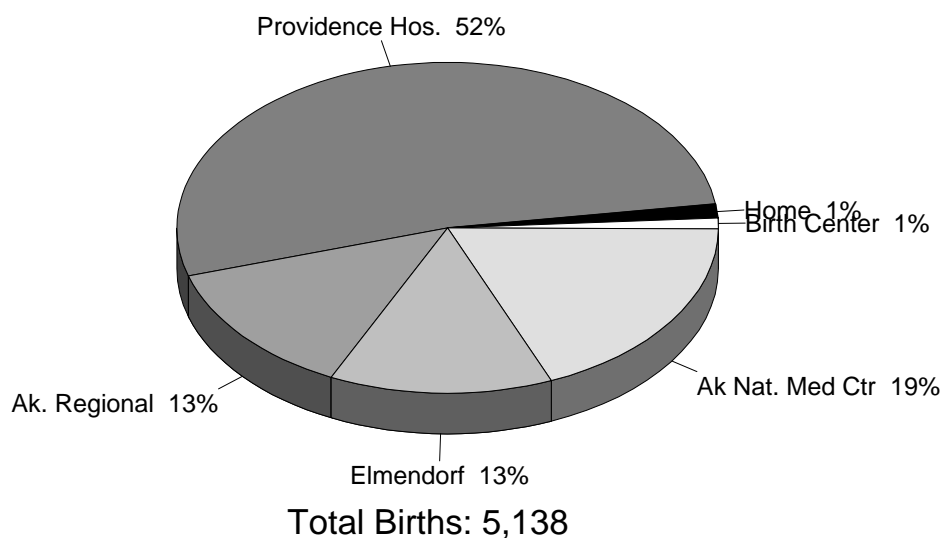


Source: "Alaska Bureau of Vital Statistics, 1994 Annual Report," Alaska Department of Health & Social Services. (Updated 3/9/99)

Population Vital Stats #19

Births by Facility

Anchorage* - 1990

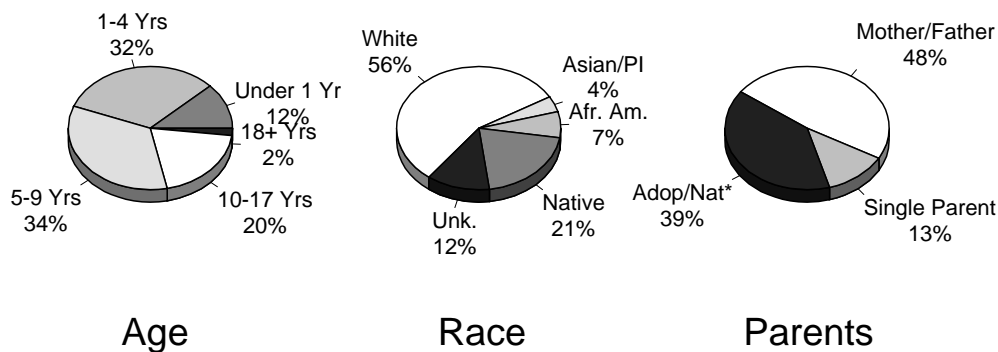


Source: U.S. Bureau of the Census. *Note: includes 974 births of Alaska residents who live in other areas of the state.

Population Vital Stats #2

Adoption Summary

Anchorage - 1997



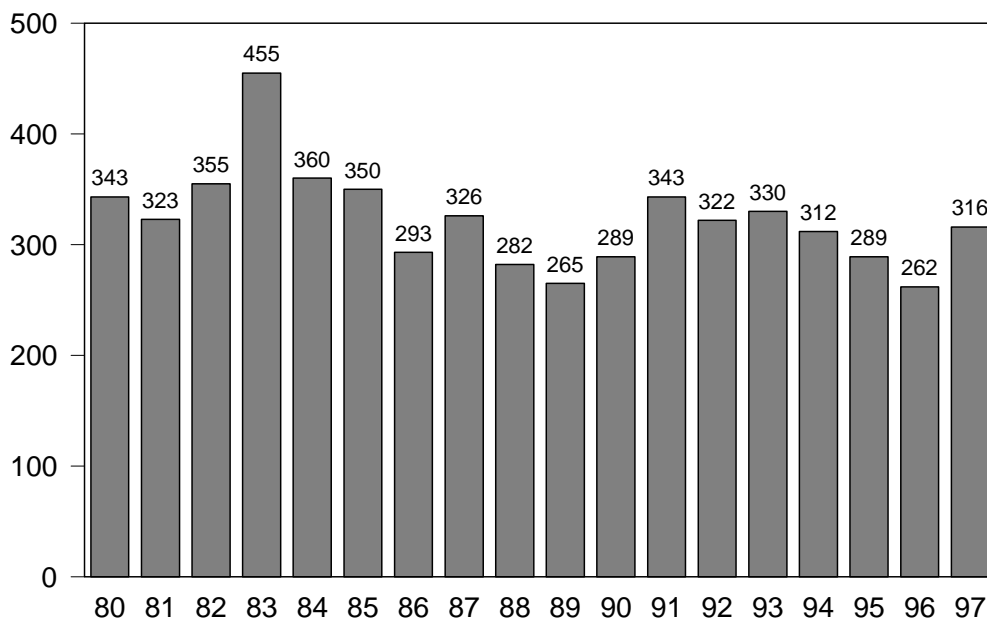
Total 1997 Adoptions: 316

Source: "Alaska Bureau of Vital Statistics, 1997 Annual Report," Alaska Department of Health & Social Services. *Adop/Nat = Adopting parent married to child's natural parent. (Updated 3/9/99)

Population Vital Stats #31

Total Adoptions

Anchorage 1980-1997

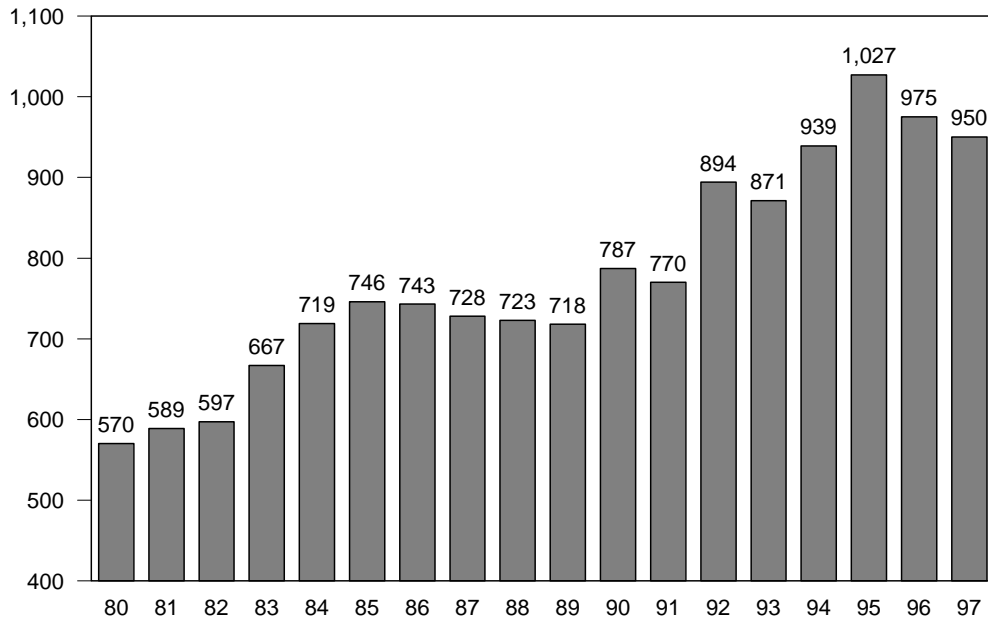


Source: Alaska Department of Health & Social Services, Division of Public Health, Bureau of Vital Statistics. (Updated 3/9/99)

Population Vital Stats #22

Anchorage Deaths

1980 to 1997

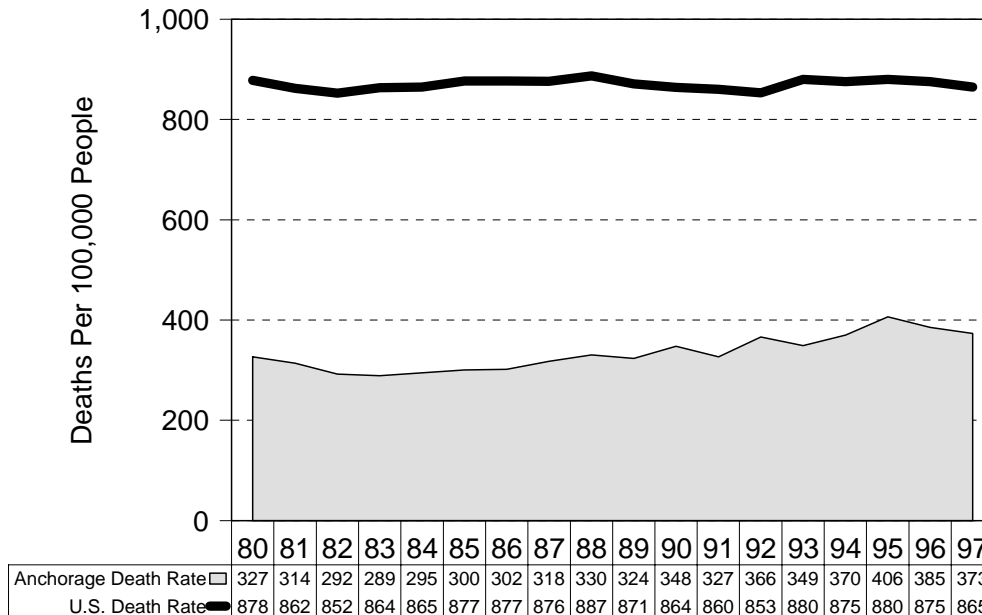


Source: Alaska Department of Health & Social Services, Division of Public Health, Bureau of Vital Statistics. (Updated 3/9/99)

Population Vital Stats #6

Anchorage & U.S. Crude Death Rates*

1980 to 1997

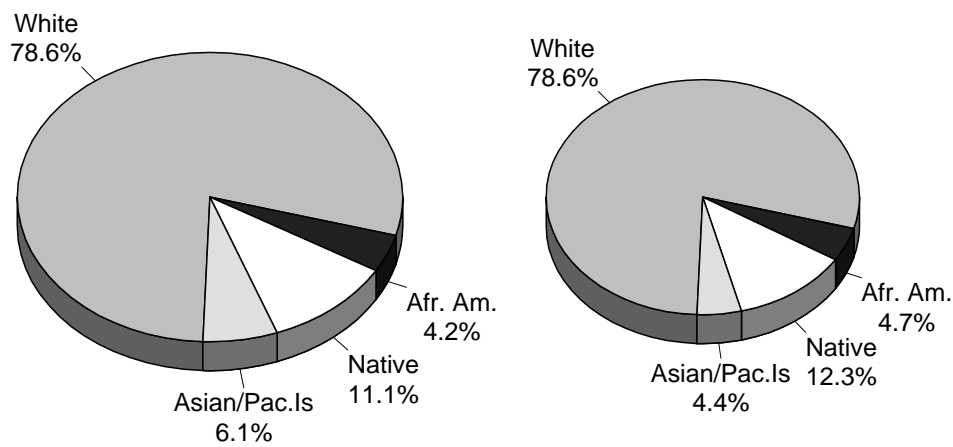


Sources: Alaska Department of Health & Social Services, Division of Public Health, Bureau of Vital Statistics; National Center for Health Statistics. *Crude Death Rate=Number of deaths per 100,000 people. They are not age-adjusted. (Updated 3/9/99)

Population Vital Stats #7

Resident Deaths by Sex & Race

Anchorage - 1997



Males: 542 Deaths

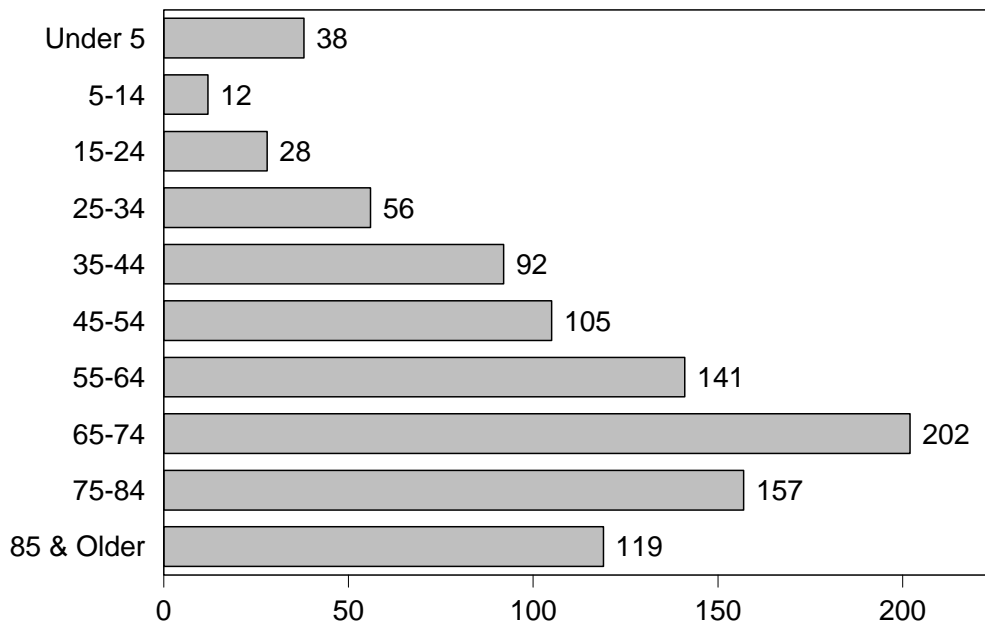
Females: 407 Deaths

Source: "Alaska Bureau of Vital Statistics, 1997 Annual Report," Alaska Department of Health & Social Services. (Revised 9/2/99)

Population Vital Stats #17

Resident Deaths by Age

Anchorage - 1997

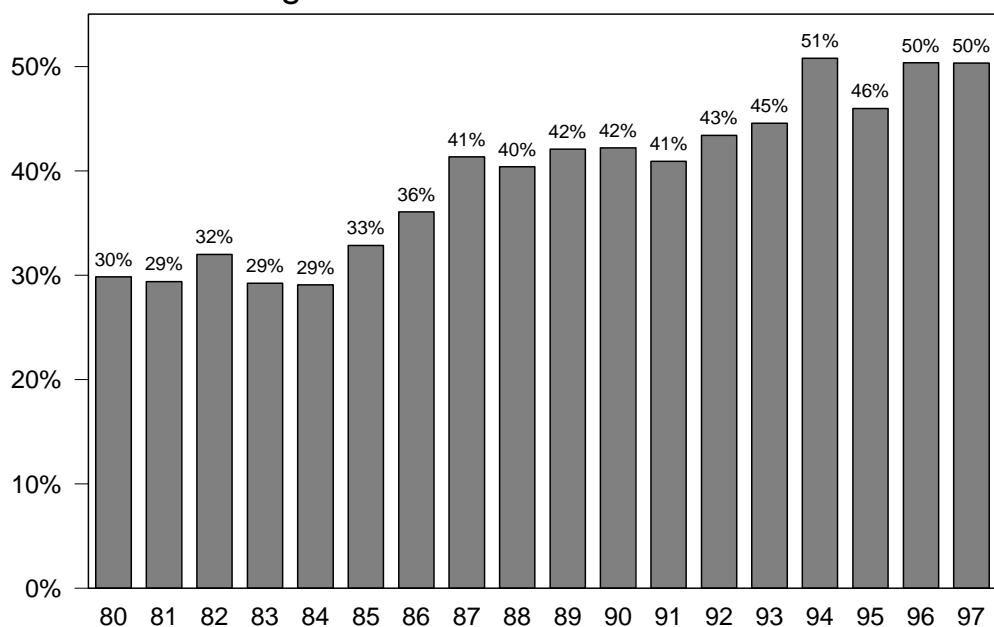


Source: "Alaska Bureau of Vital Statistics, 1997 Annual Report," Alaska Department of Health & Social Services. (Updated 3/9/99)

Population Vital Stats #19

% of Total Deaths

Anchorage Persons 65 & Older - 1980-1996



Source: Alaska Department of Health & Social Services, Division of Public Health, Bureau of Vital Statistics. (Revised 9/10/98)

Population Vital Stats #36

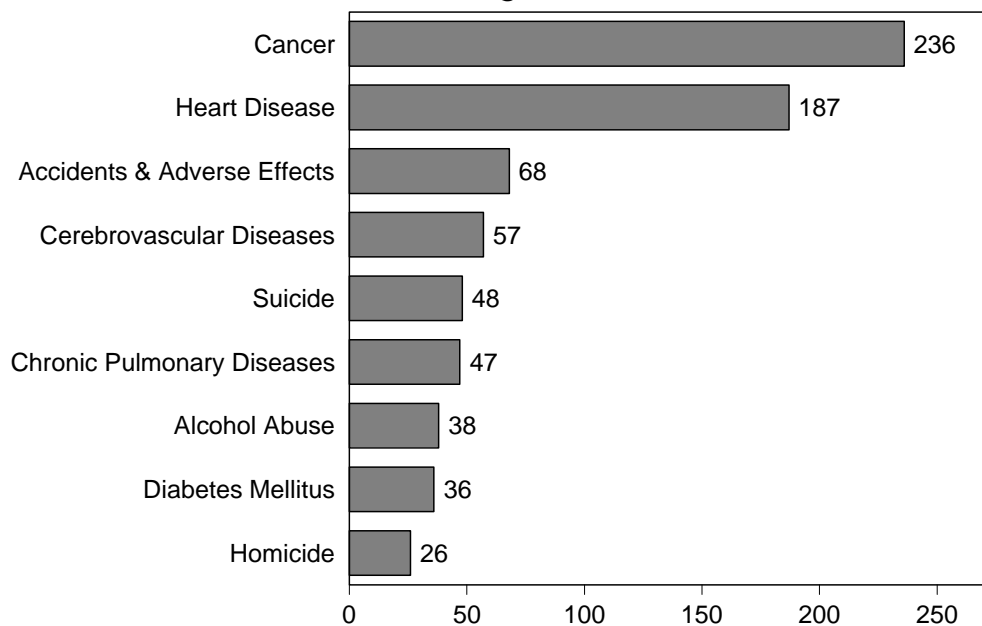
Resident Deaths by Age - Anchorage 1980-1997

| Year | Age at Death | | | | | | | | | | Unk | Total |
|------|--------------|------|-------|-------|-------|-------|-------|-------|-------|---------|-----|-------|
| | Under 5 | 5-14 | 15-24 | 25-34 | 35-44 | 45-54 | 55-64 | 65-74 | 75-84 | 85 & Up | | |
| 1980 | 46 | 6 | 49 | 64 | 54 | 61 | 119 | 90 | 54 | 26 | 1 | 570 |
| 1981 | 61 | 14 | 56 | 67 | 52 | 71 | 94 | 84 | 58 | 31 | 1 | 589 |
| 1982 | 48 | 8 | 43 | 60 | 53 | 80 | 114 | 91 | 74 | 26 | - | 597 |
| 1983 | 54 | 11 | 48 | 73 | 66 | 95 | 125 | 104 | 66 | 25 | - | 667 |
| 1984 | 64 | 13 | 60 | 82 | 88 | 90 | 113 | 107 | 78 | 24 | - | 719 |
| 1985 | 60 | 9 | 53 | 67 | 78 | 94 | 140 | 121 | 72 | 52 | - | 746 |
| 1986 | 57 | 9 | 46 | 70 | 72 | 88 | 133 | 134 | 88 | 46 | - | 743 |
| 1987 | 63 | 6 | 38 | 65 | 59 | 80 | 116 | 145 | 111 | 45 | - | 728 |
| 1988 | 58 | 11 | 37 | 59 | 78 | 73 | 115 | 152 | 100 | 40 | - | 723 |
| 1989 | 42 | 12 | 29 | 66 | 78 | 69 | 120 | 140 | 115 | 47 | - | 718 |
| 1990 | 55 | 5 | 37 | 61 | 70 | 85 | 142 | 162 | 114 | 56 | - | 787 |
| 1991 | 44 | 11 | 40 | 69 | 79 | 84 | 128 | 147 | 126 | 42 | - | 770 |
| 1992 | 52 | 3 | 44 | 74 | 86 | 106 | 141 | 190 | 126 | 72 | - | 894 |
| 1993 | 49 | 12 | 34 | 63 | 102 | 94 | 129 | 179 | 131 | 78 | - | 871 |
| 1994 | 40 | 6 | 45 | 49 | 84 | 111 | 127 | 195 | 174 | 108 | - | 939 |
| 1995 | 44 | 9 | 43 | 82 | 109 | 113 | 155 | 203 | 172 | 97 | - | 1,027 |
| 1996 | 32 | 5 | 39 | 49 | 100 | 117 | 142 | 190 | 187 | 114 | - | 975 |
| 1996 | 38 | 12 | 28 | 56 | 92 | 105 | 141 | 202 | 157 | 119 | - | 950 |

Source: Alaska Department of Health and Social Service, Division of Public Health, Bureau of Vital Statistics. (Revised 9/10/99)

Major Causes of Death

Anchorage - 1997

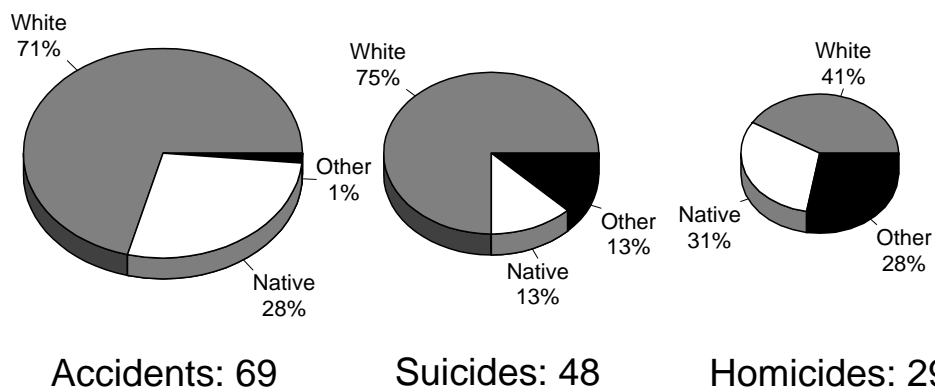


Source: "Alaska Bureau of Vital Statistics, 1997 Annual Report," Alaska Department of Health & Social Services. (Updated 3/9/99)

Population Vital Stats #42

Accidental, Suicide & Homicide Deaths by Race

Anchorage - 1997



Source: "Alaska Bureau of Vital Statistics, 1997 Annual Report," Alaska Department of Health & Social Services. Note: These deaths are reported where they occurred and some persons who died are residents of other places in Alaska. (Updated 3/9/99)

Population Vital Stats #6