

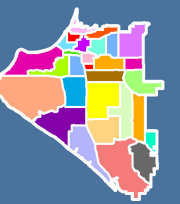


# Anchorage 2040 Land Use Plan Map

A supplement to the Anchorage 2020 Comprehensive Plan

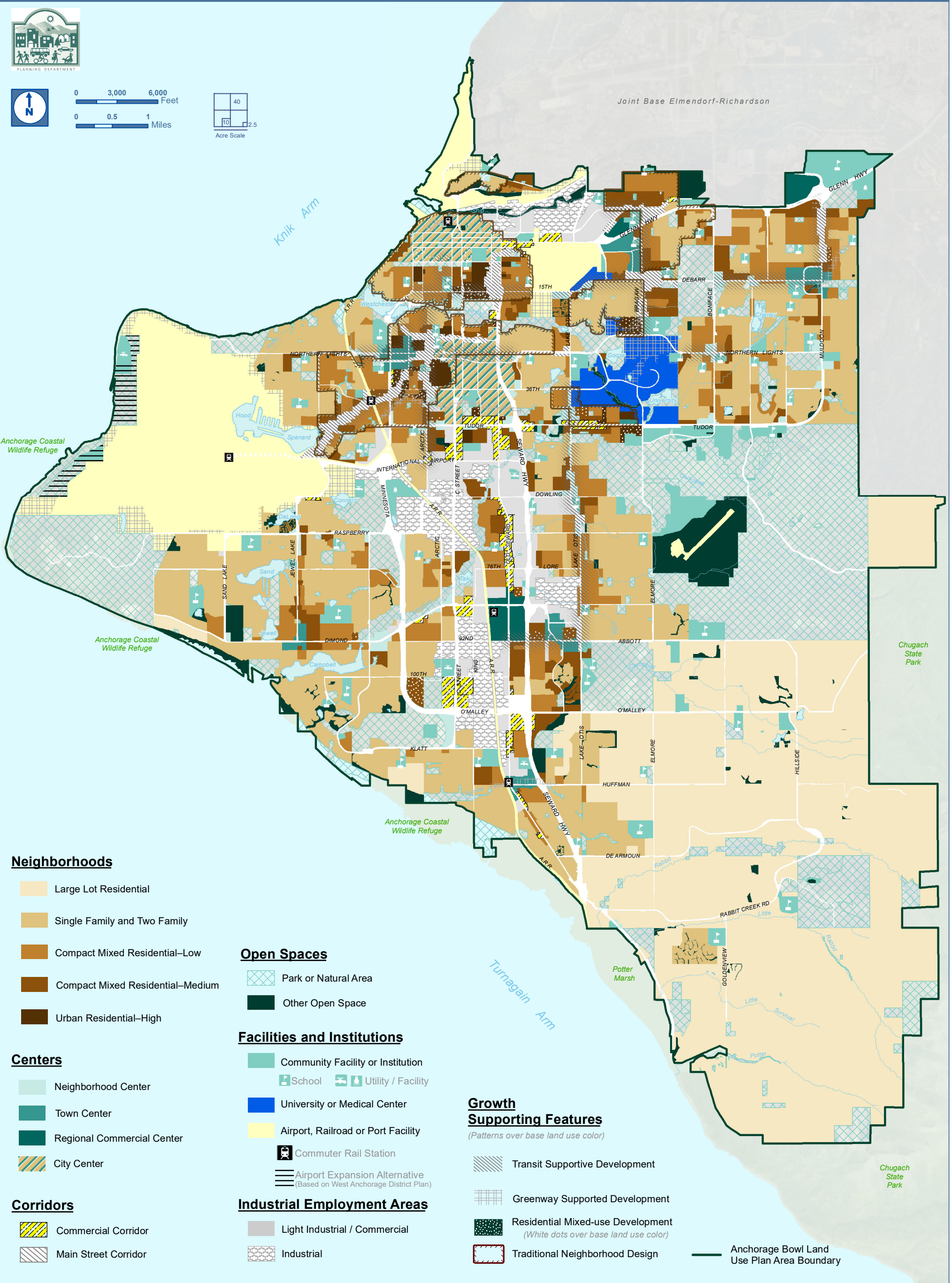
Public Hearing Draft 9/25/2016

## Color Blind Friendly Version



0 3,000 6,000 Feet  
0 0.5 1 Miles

40  
10 2.5  
Acre Scale



### Neighborhoods

- Large Lot Residential
- Single Family and Two Family
- Compact Mixed Residential—Low
- Compact Mixed Residential—Medium
- Urban Residential—High

### Centers

- Neighborhood Center
- Town Center
- Regional Commercial Center
- City Center

### Corridors

- Commercial Corridor
- Main Street Corridor

### Open Spaces

- Park or Natural Area
- Other Open Space

### Facilities and Institutions

- Community Facility or Institution
- School
- Utility / Facility
- University or Medical Center
- Airport, Railroad or Port Facility
- Commuter Rail Station
- Airport Expansion Alternative (Based on West Anchorage District Plan)

### Industrial Employment Areas

- Light Industrial / Commercial
- Industrial

### Growth Supporting Features

(Patterns over base land use color)

- Transit Supportive Development
- Greenway Supported Development
- Residential Mixed-use Development (White dots over base land use color)
- Traditional Neighborhood Design

Anchorage Bowl Land Use Plan Area Boundary

WHERE WE ARE

▼ You Are Here

February 29, 2016  
Community Discussion Draft

September 25, 2016  
Public Hearing Draft

October 17 – November, 2016  
PZC Public Hearing and Recommendation

Assembly Public Hearing and Adoption