

# Marijuana Permitting Flowchart

Concept Meeting with Municipality –  
Site Info Required  
(meeting not required but recommended)

State Application Deemed Complete

Prior to the submittal of the Special Land Use Permit application, a community meeting must be conducted in accordance with AMC 21.03.020

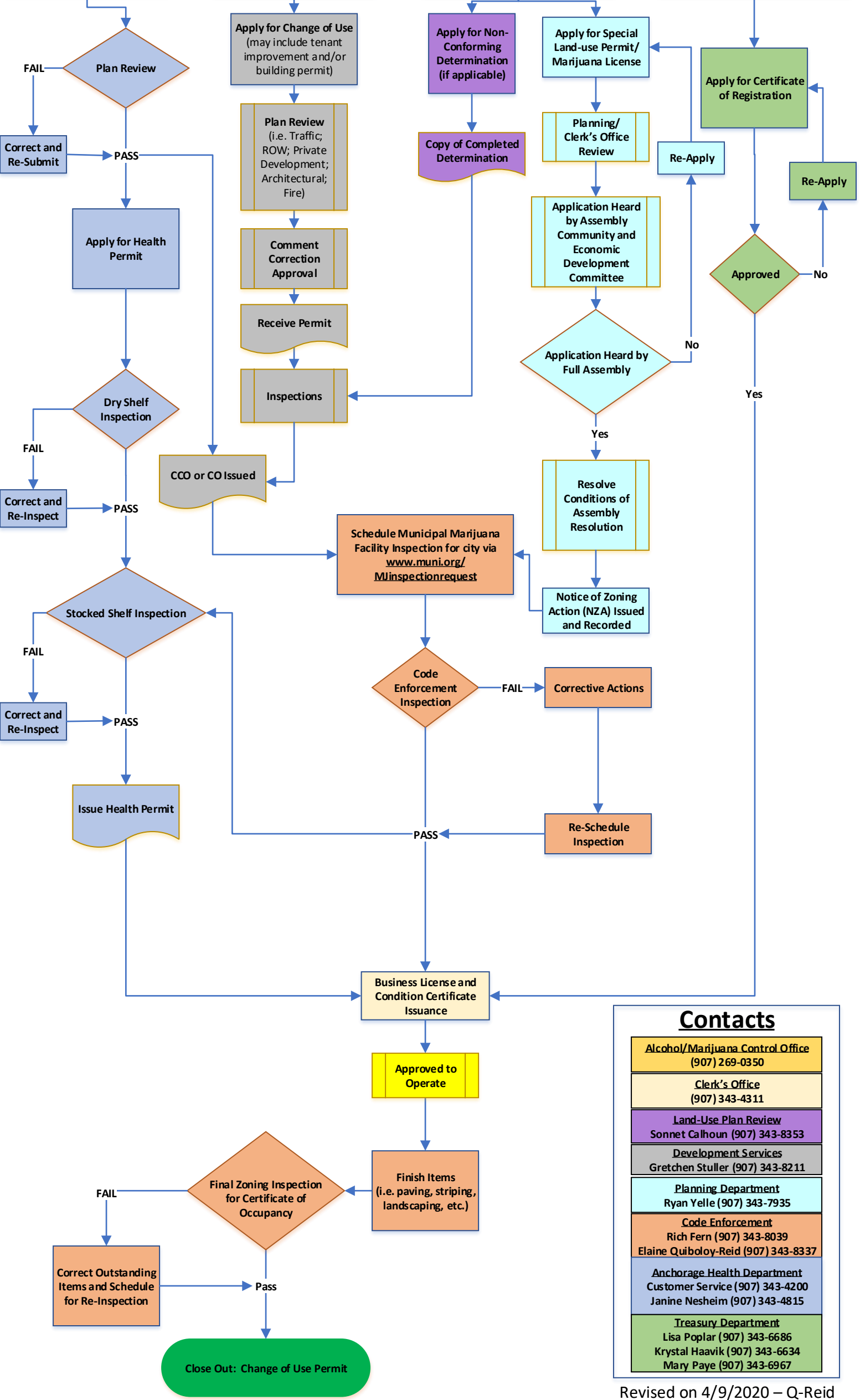
SUBMIT THE FOLLOWING MUNICIPAL APPLICATION

**Anchorage Health Department (Retail Only)**

**Building Safety Development Services**

**Planning Department**

**Treasury Department (Retail Only)**



<b>Contacts</b>
<b>Alcohol/Marijuana Control Office</b> (907) 269-0350
<b>Clerk's Office</b> (907) 343-4311
<b>Land-Use Plan Review</b> Sonnet Calhoun (907) 343-8353
<b>Development Services</b> Gretchen Stuller (907) 343-8211
<b>Planning Department</b> Ryan Yelle (907) 343-7935
<b>Code Enforcement</b> Rich Fern (907) 343-8039 Elaine Quiboloy-Reid (907) 343-8337
<b>Anchorage Health Department</b> Customer Service (907) 343-4200 Janine Nesheim (907) 343-4815
<b>Treasury Department</b> Lisa Poplar (907) 343-6686 Krystal Haavik (907) 343-6634 Mary Paye (907) 343-6967