
Merrill Field Airport

Anchorage: Performance. Value. Results.

Mission

Safely operate and maintain Merrill Field Airport to meet the aviation and business needs of our customers.

Core Services

- Maintain runways, taxiways, and aircraft parking aprons in a safe and secure condition.
- Provide space to operate and park aircraft.
- Provide lease space for private enterprises to support air transportation.

Accomplishment Goals

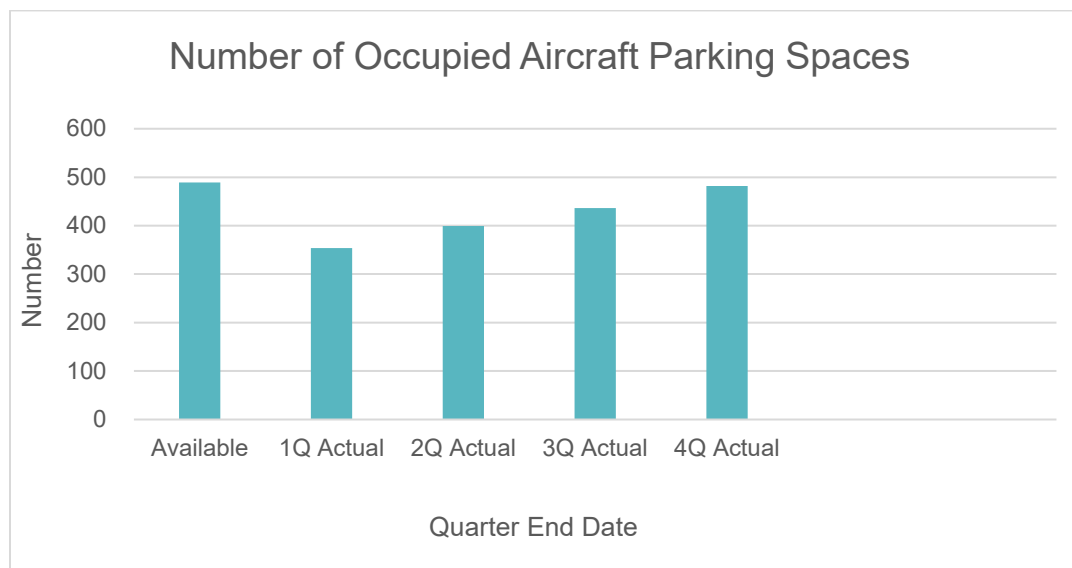
- Reduce the number of vehicle-pedestrian deviations (VPDs) - unauthorized entry into restricted areas.
- Provide sufficient aircraft parking area and business lease space to meet public demand.
- Repair and improve surface conditions on all Runway operating surfaces with a Pavement Condition Index (PCI) below 70 and all Taxiway, Apron & Roadway operating surfaces with a PCI below 60 (on a scale of 1 – 100 with 100 being the best condition).

Performance Measures

Progress in achieving goals will be measured by:

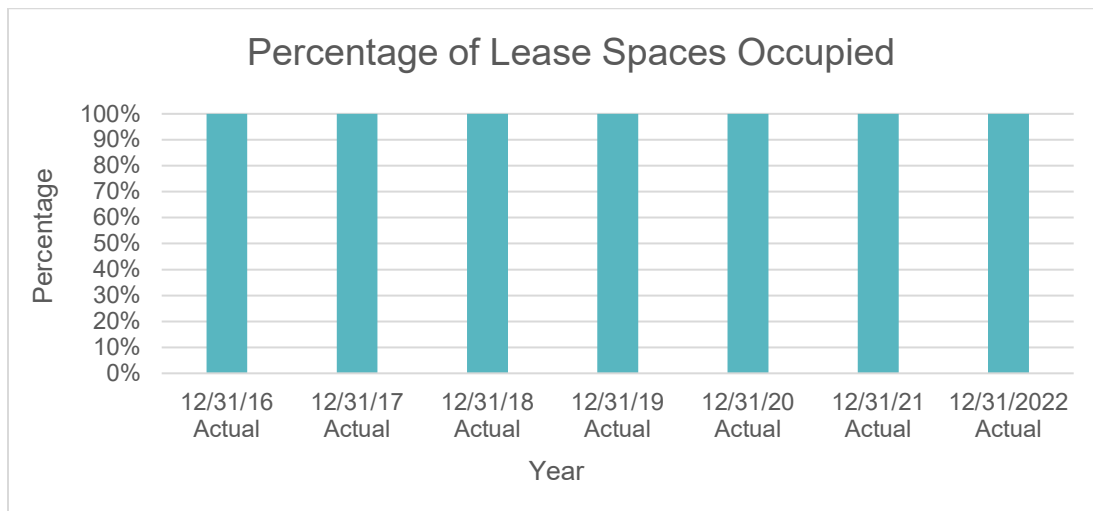
Measure #1: Number of Occupied Aircraft Parking Spaces owned by Merrill Field
--

Spaces Available	3Q Actual	4Q Actual
489	436	482



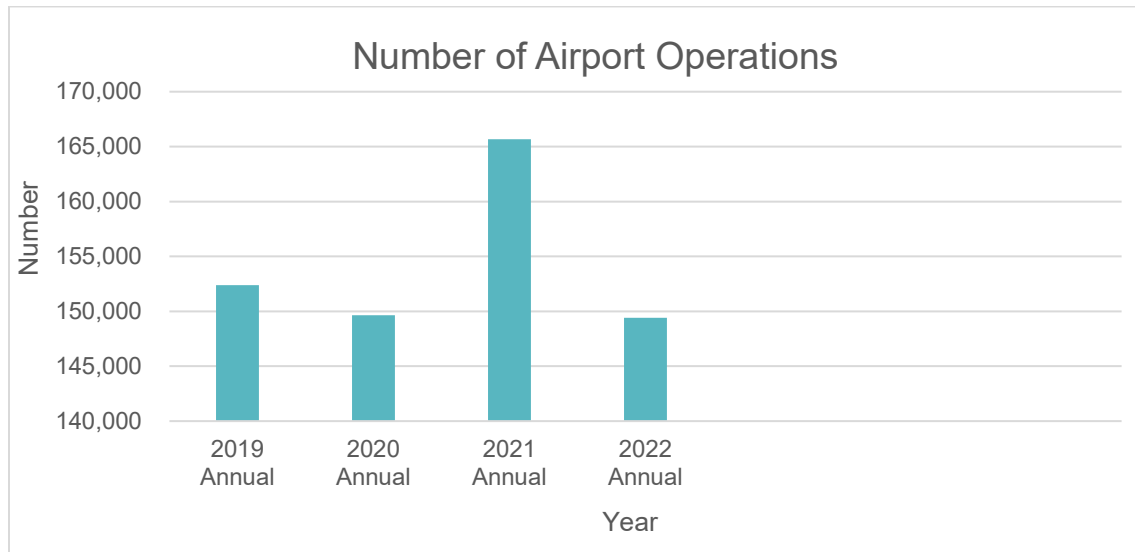
Measure #2: Percentage of Lease Spaces, on Merrill Field Land, Currently Leased

2020 Actual	2021 Actual	2022 Actual
(54/54)	(55/55)	(55/55)
100%	100%	100%



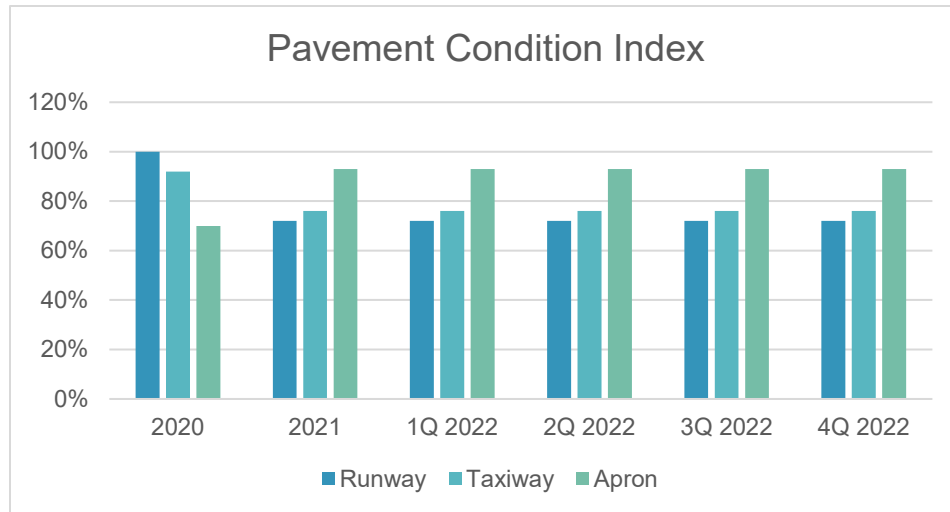
Measure #3: Number of Airport Operations (Takeoffs, landings, touch-n-go operations, instrument approaches and airport overflights)

2020 Actual	2021 Actual	2022 Actual
149,639	165,671	149,399



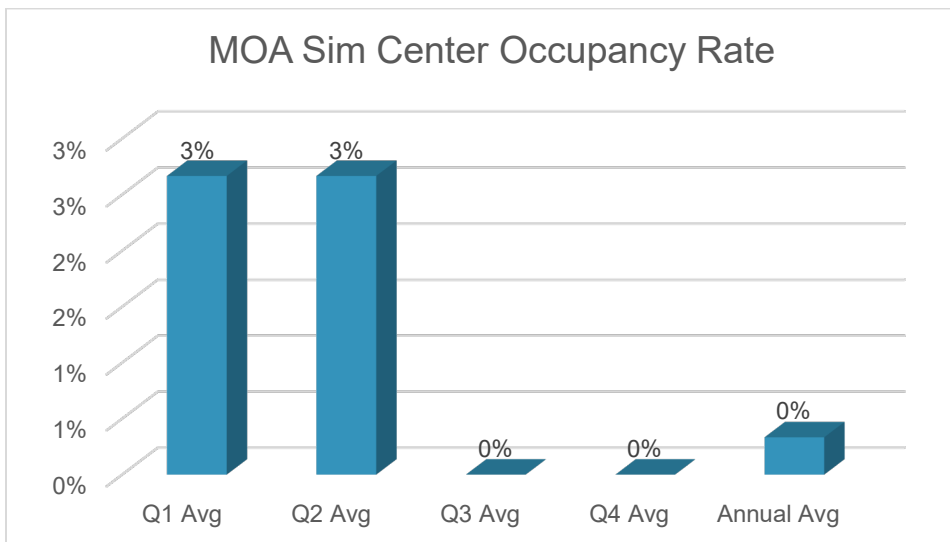
Measure #4: Percentage of operating surfaces above the minimum Pavement Condition Index (PCI) value

12/31/22 Actual	12/31/22 Actual	12/31/22 Actual
Runway	Taxiway	Apron
72%	76%	93%



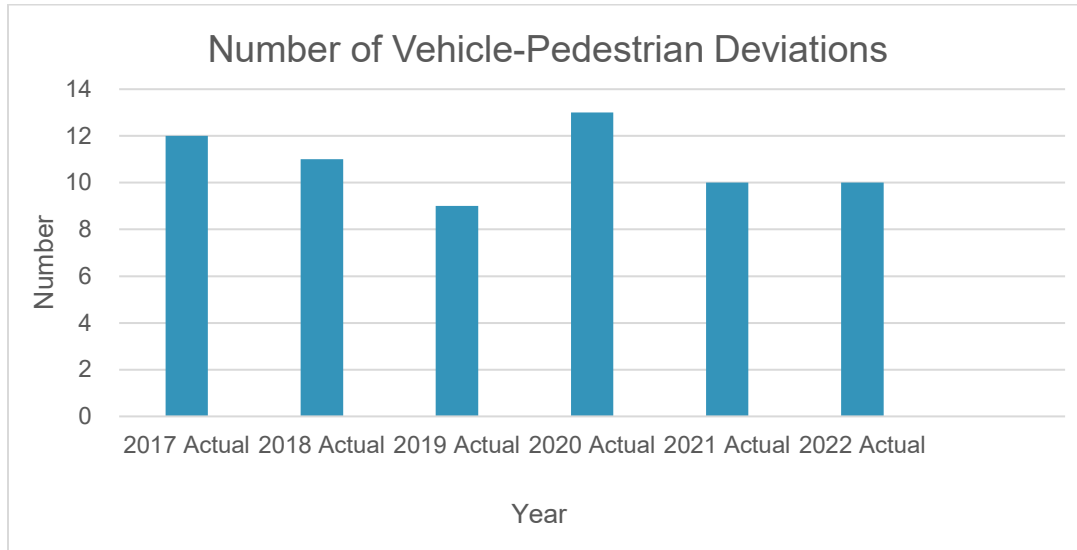
Measure #5: Simulator Center Usage (new program)

2021 Goal Avg	2021 Actual Avg	2022 Actual Avg
40%	20%	0%



Measure #6: Number of Vehicle-Pedestrian Deviations (VPDs)

2020 Actual	2021 Actual	2022 Actual
13	10	10



PVR Measure WC: Managing Workers' Compensation Claims

Reducing job-related injuries is a priority for the Administration by ensuring safe work conditions and safe practices. By instilling safe work practices, we ensure not only the safety of our employees but reduce the potential for injuries and property damage to the public. The Municipality is self-insured and every injury poses a financial burden on the public and the injured worker's family. It just makes good sense to WORK SAFE.

Results are tracked by monitoring monthly reports issued by the Risk Management Division.

