



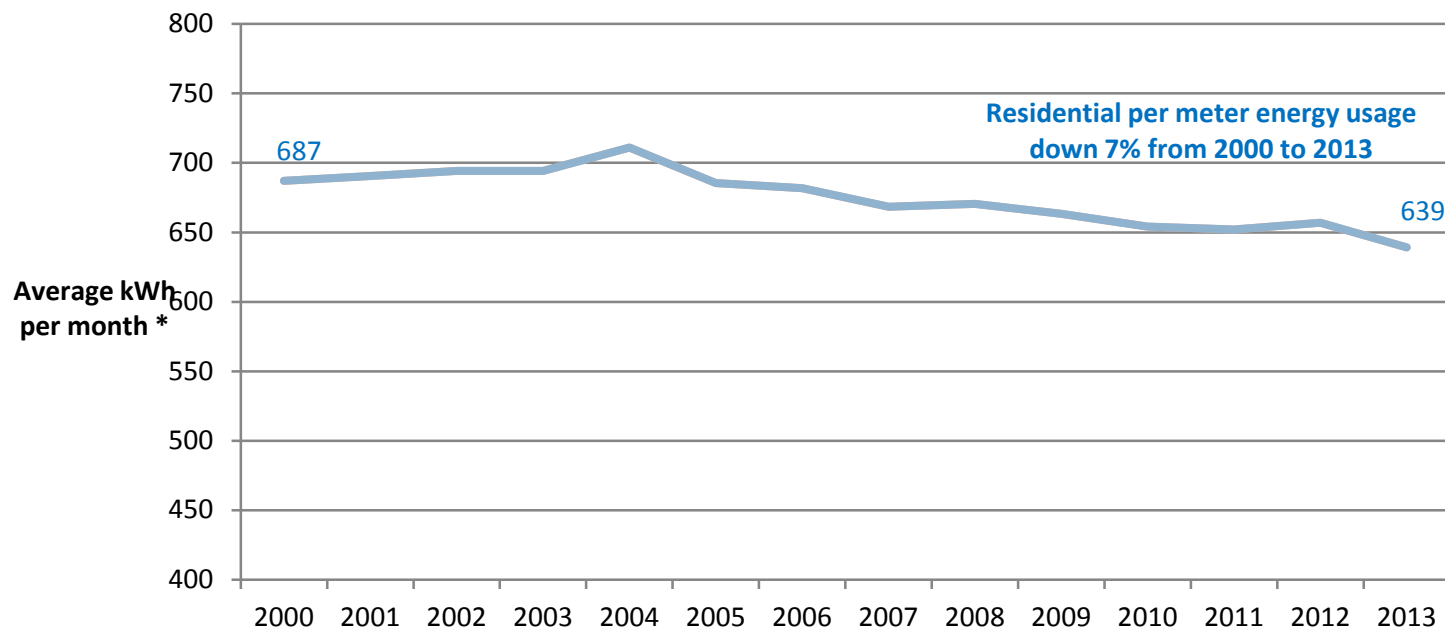
# Chugach Electric Association, Inc. Fall Energy Update

Mayor's Energy Task Force  
October 21, 2014

# Agenda

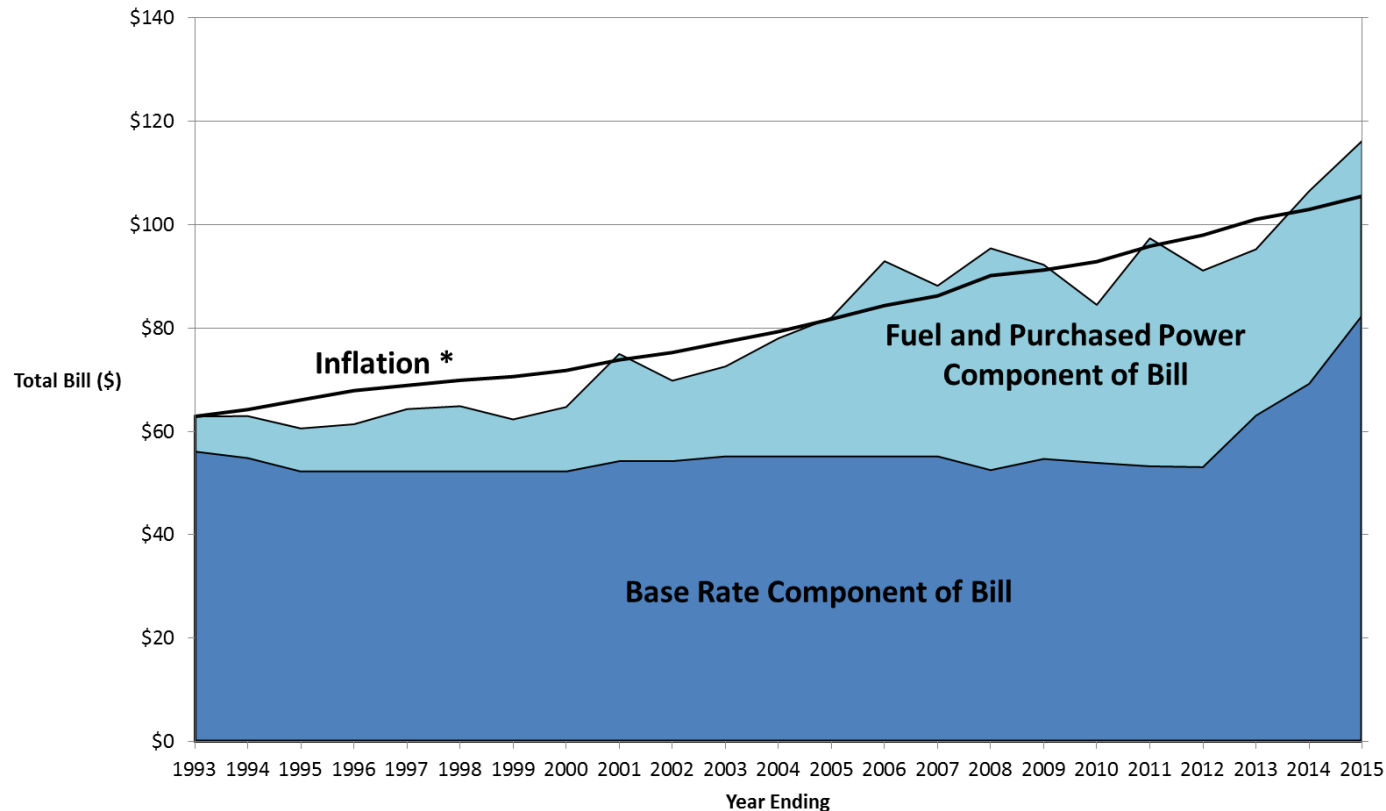
1. Electric Rates
2. Economic Dispatch
3. Energy Watch – Gas Supply
4. MEA Interim Power Sales Agreement
5. Energy Issues to Watch

# Average Monthly Residential Consumption



# Monthly Residential Bill Trend

Based on 650 kWh Consumption

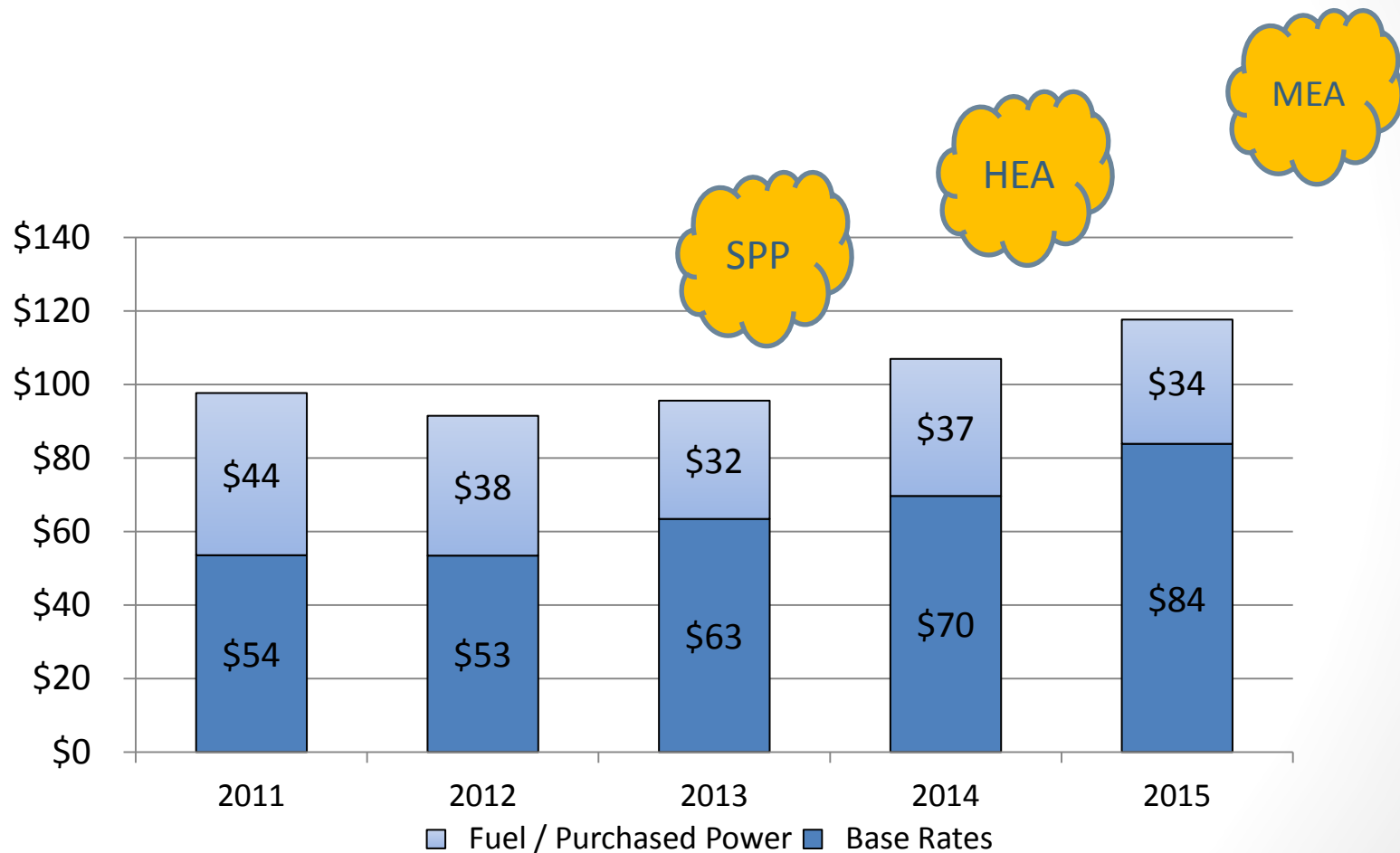


\* 1993 Residential Bill, adjusted for inflation.

Note: 2015 projected.

# Residential Service - 650 kWh

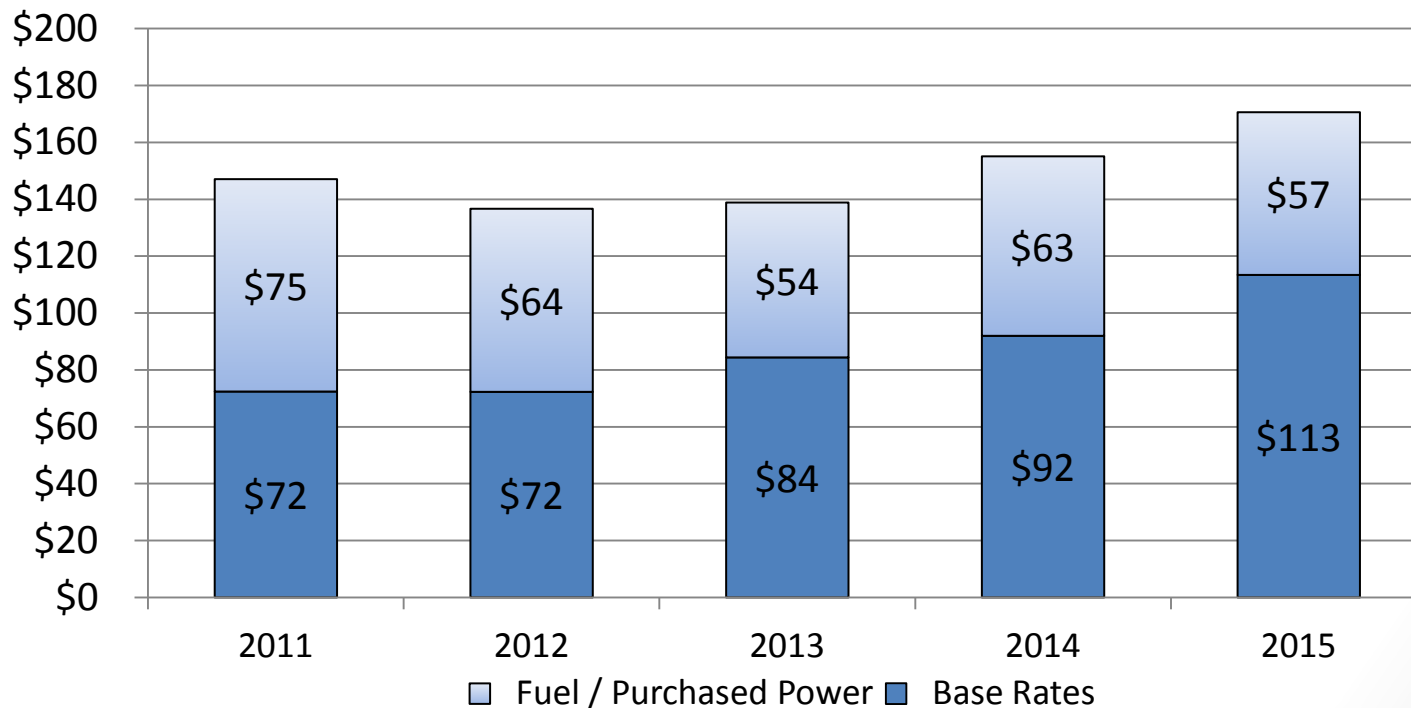
## Base Rate and Fuel and Purchased Power Components



Bill totals based on rates effective fourth quarter of each year; 2015 projected.

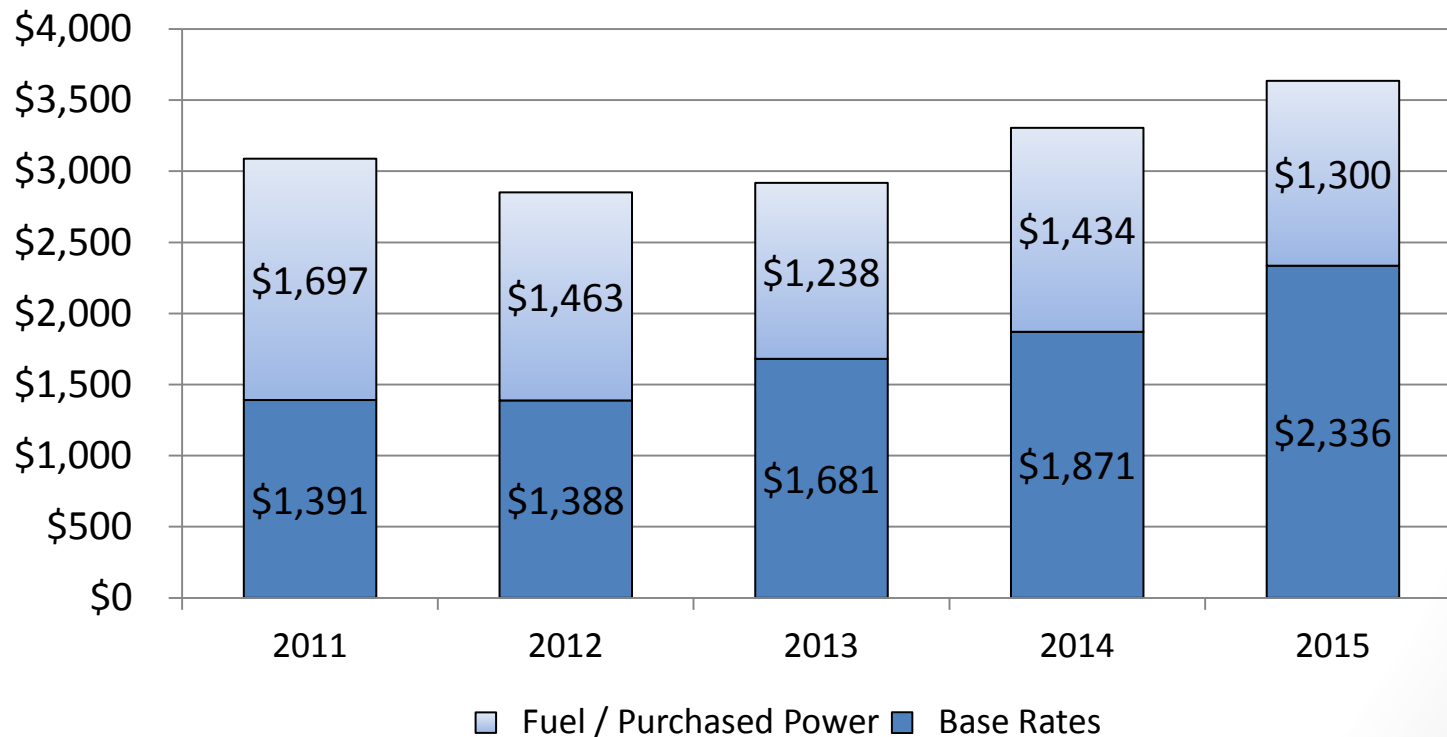
# Small General Service - 1,100 kWh

## Base Rate and Fuel and Purchased Power Components



Bill totals based on rates effective fourth quarter of each year; 2015 projected.

# Large General Service Secondary - 25,000 kWh; 63 kW Base Rate and Fuel and Purchased Power Components



Bill totals based on rates effective fourth quarter of each year; 2015 projected. Bill totals based on 53% load factor.

# Economic Dispatch Savings

Savings – 100's of millions annually

- (\$146 to \$241 million per 2013 AEA study)

\$.03 to \$.05 reduction in electric rates?

- \$19.50 to \$32.50 per month for residential customer (based on energy use of 650 kWh/mo.)

Requires joint effort

- All utilities must participate to effect change

Chugach taking close look at the numbers

- Complex long-term analysis – depends on fuel costs and transmission improvements

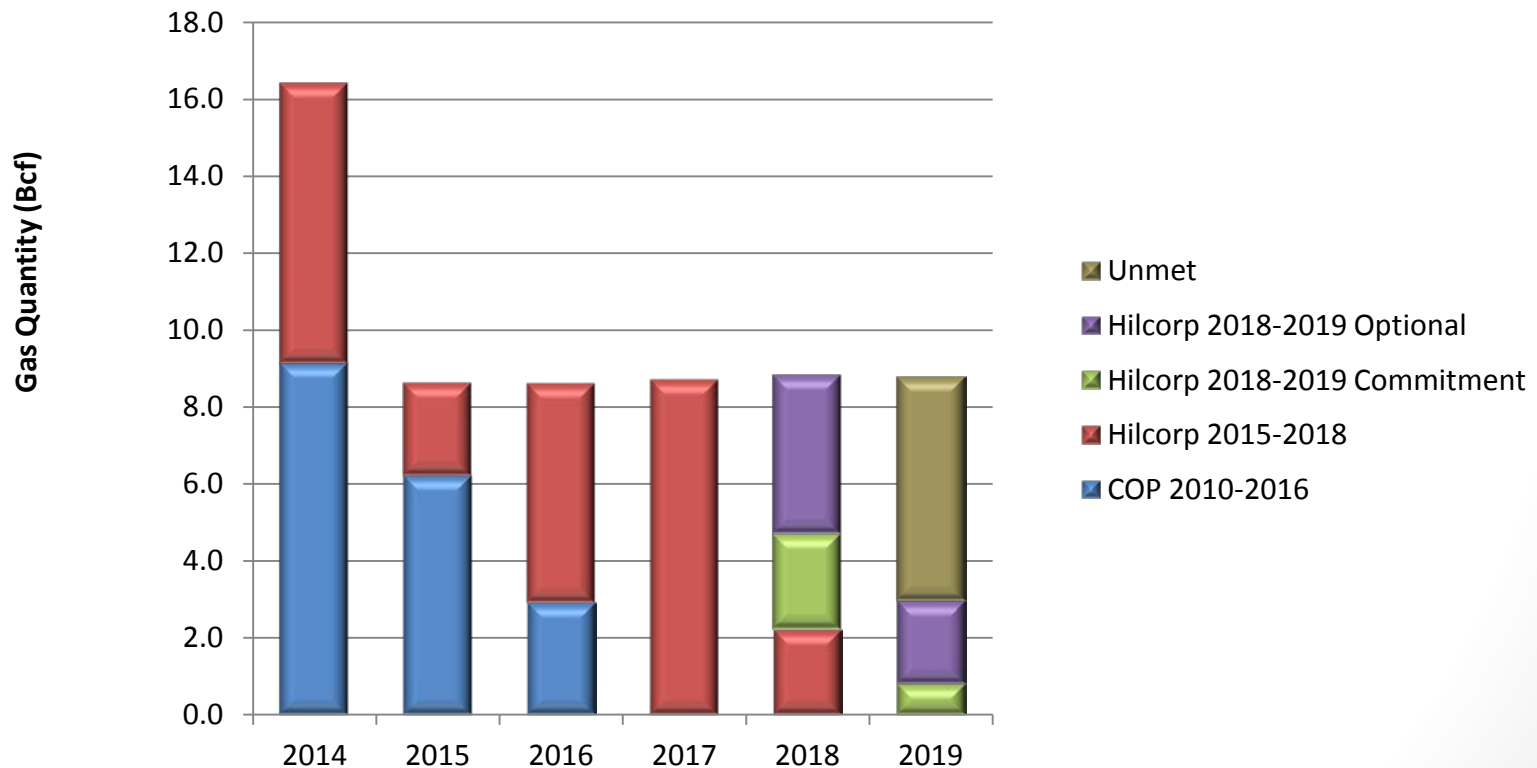
Reach out to colleagues and other stakeholders to reach solution

- Reversing current trend of rising prices requires action now!



# Energy Watch – Chugach Gas Supply

Chugach Gas Supply Requirements



# Energy Watch – Cook Inlet Gas Supply

et Natl  
AG  
Ala

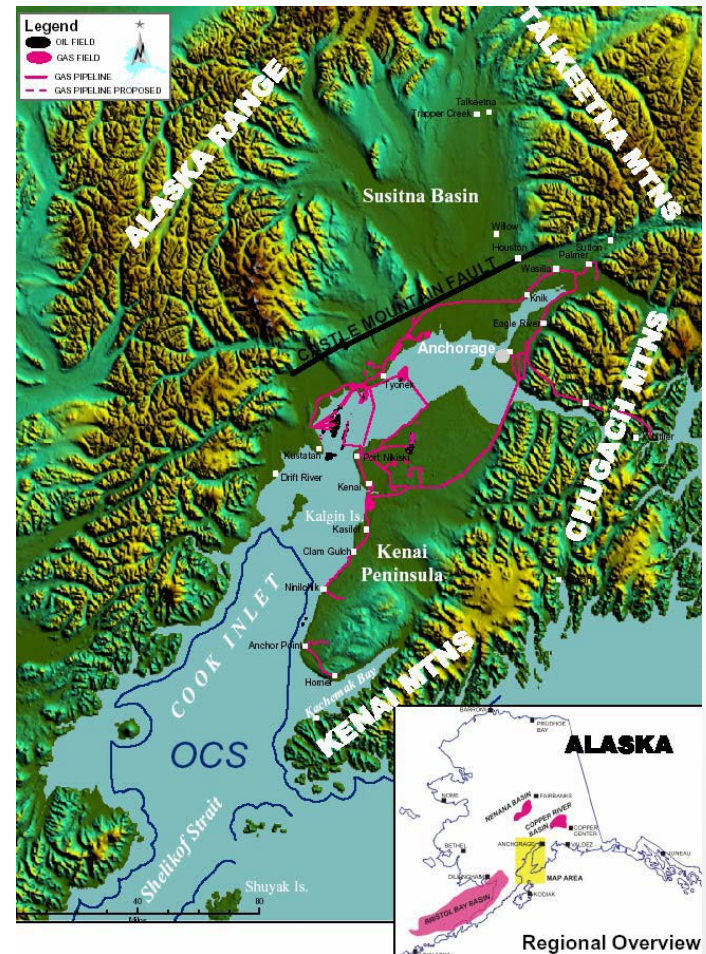
CINGSA

Hilcorp Pipeline  
Consolidation

[Hilcorp]



Backup  
Compression



# 2015 Interim Power Sales Agreement



## Full Requirements Backup Supply

- Continue tariff pricing
- Period – First quarter w/extension option



## Pool EGS units if available

- MEA provides all gas to meet MEA loads
- 4 EGS units anticipated to be available

# Energy Issues to Watch

RCA Investigation  
(Unified Grid  
Operation)

Proposed IPP  
Legislation

EPA's Proposed  
Clean Power Plan

Susitna-Watana  
Project

Battle Creek  
Project

# Questions & Answers