

2011 Wildfire Mitigation Project *Kobuk Park*



Municipality of Anchorage
Anchorage Fire Department • Wildfire Mitigation Office
Parks & Recreation Department



To mitigate the risk and hazard of wildfire to the adjacent homes and neighborhood, the Anchorage Fire Department has partnered with the MOA Parks & Recreation Department for a fuel mitigation project this spring at Kobuk Park. The area designated for treatment will incorporate the entire park.

The project will treat the dead standing and fallen trees; thin / prune dense spruce and buck and chip the green wood to reduce the fuels for a potential fire. By removing dead woody material and pruning the live residual trees, less fuel (wood) is available to burn and will help protect homes adjacent to park property from potential fires. Also, the increased visibility into the forest dissuades fire use and other illegal activities. The creek will maintain a 50 foot buffer in accordance with the AMC 21.45.210.

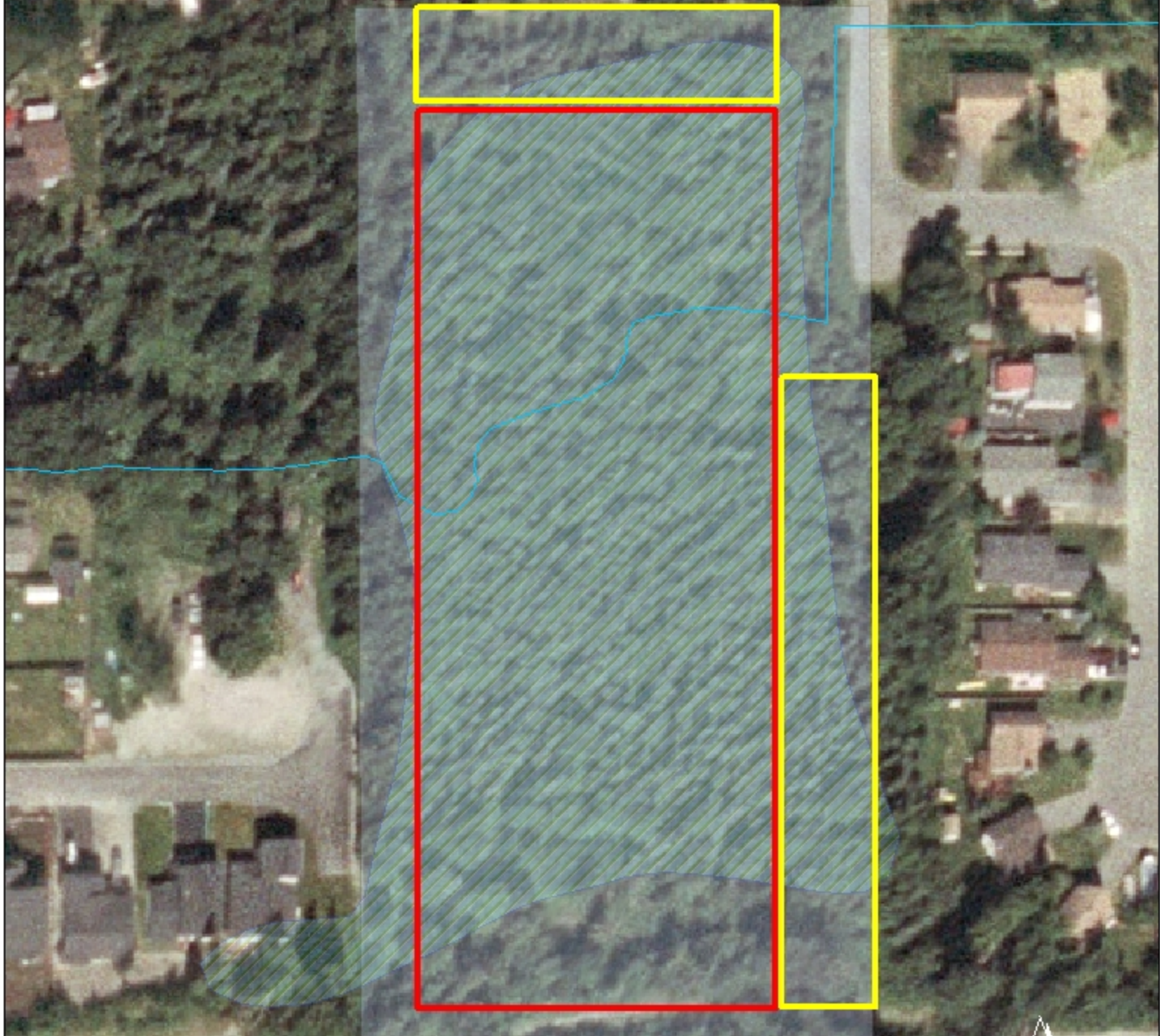
Tree work is scheduled to begin in 2011 with professional fuel reduction specialists thinning and pruning trees along the perimeter. The area outlined in red will have the dead standing and down wood removed with thinning in very dense stands. The sections outlined in yellow will be pruned to reduce the ladder fuel potential and create a safer perimeter adjacent to homes.

Dense black spruce trees will be thinned into small clumps. Residual trees will be pruned, removing the lower branches near the ground. This treatment removes "fuel" for fires between trees and improves visibility through the forest near the trail for safety.

- Please watch for signs indicating that the crew and chipper are working. Give them plenty of space while using the park
- Nesting birds use both trees and the forest floor during the spring to raise their young. The crews have been instructed to be watchful for nests and leave those trees and areas alone.

<http://www.muni.org/fire> - <http://www.muni.org/parks>

Kobuk Park



Legend

- Stream
- Wetland
- Kobuk Park
- Pruning Area
- Thinning Area

