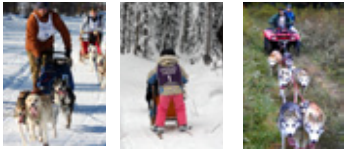


Beach Lake Park Uses

DOG MUSHING



Mushing trails are formally dedicated and protected as the major trail use north of the railroad tracks. Exclusive mushing trail use is August 1st - April 15th to be adjusted at the discretion of the department. Mushing trails are open for multi-use May - July, with improvements and/or blockages to limit trail damage in sensitive wet areas. Measures are needed to keep other users and loose dogs off of trails during the mushing season. Water/extreme wet conditions/poor soils limit some trails to winter use.

- Existing Trail
- - - Proposed Future Trail
- Trail Relocation
- Winter Trail Only
- ◇ Grade-Separated Trail
Safety and spectator viewing separation

Mushing Facilities

Seasonal use, with public rental options

- Existing Facility
- Existing Parking
- Expansion Reserve Area
(as needed facility and/or parking expansion)
- ✱ Unauthorized, unsecured trails crossing private land
(relocate or gain easements)

NORDIC SKI



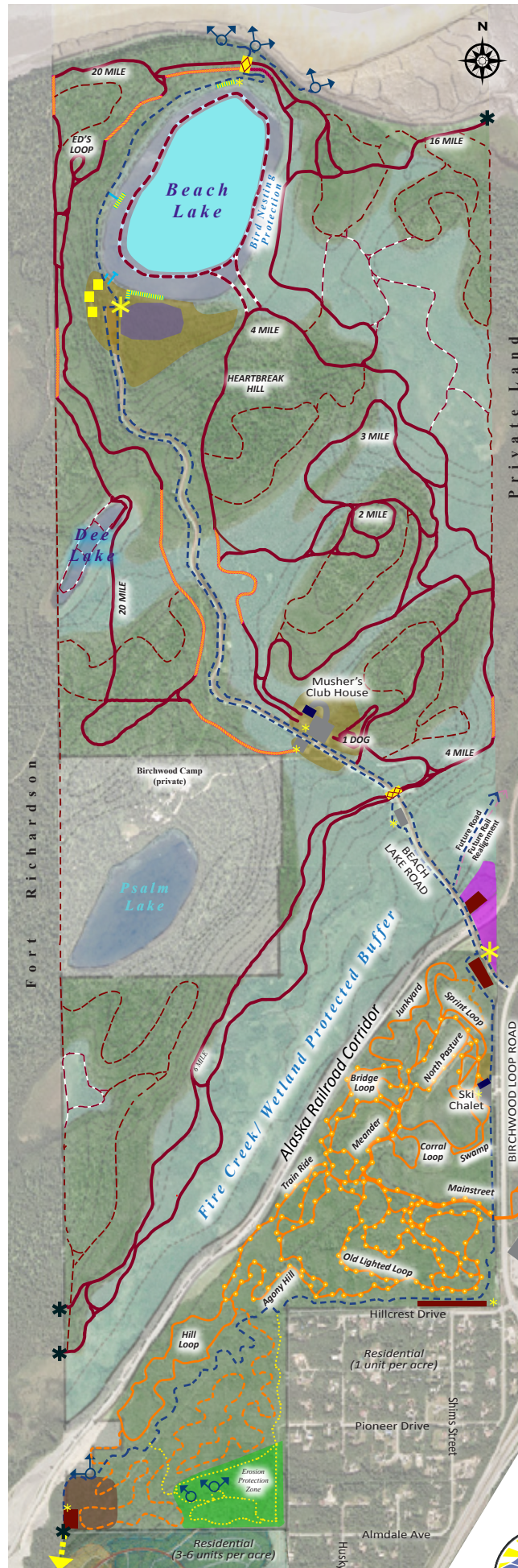
Nordic Ski trails are formally dedicated and protected as the major trail use south of the railroad tracks, up to the designated multi-use trail crossing. Skiers have exclusive use of these trails during the winter maintenance season. Ski trail expansions south of the multi use trail are unlit and unmaintained, and are not exclusive use for Nordic ski. The rest of the year, trails are open for multi-use with improvements and/or blockages to limit trail damage in sensitive wet areas.

- Existing Ski Trails
- Existing Ski Trail Lightpoles
- - - Unlit/Unmaintained Ski Trail Expansion

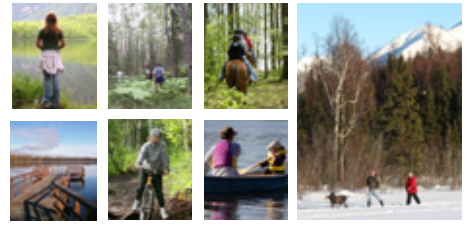
Nordic Ski Facilities

Seasonal use, with public rental options

- Existing Facility
- Existing Parking
- Expansion Reserve Area
(as needed facility and/or parking expansion)



MULTI USE



Non-motorized multi-use corridors and public areas are phased into the park as the population grows to focus and direct public use, with the intent of maintaining the natural character. No multi-use facility is to be installed until: 1) there is demonstrated demand; 2) maintenance resources and responsibilities are clearly set out; and 3) measures are in place to separate incompatible uses, including signage.

Multi-Use Trails:

Beach Lake Road: Non-paved, one side of the road. Construct second side only if/when conflicts demonstrate clear need for additional capacity.

Beach Lake Vicinity: Emphasize ADA accessibility, and protection of lake edge habitat.

NW1/4 Section: Initially along powerline until re-designed as a winding forest setting trail with width capacity for 2-way horses & bikes to safely pass.

NW1/4 Section Footpath:

Minimal clearing, except in select scenic view areas. Revegetate disturbed areas, protect slope from erosion.

Public Use Area

- Winter - Multi-use ice fish, cross-country ski, skijor, ice skate, etc. Closure or trail priority for mushing events.
- Summer - Small craft boating, fishing, swimming, etc

Beach Lake Day Use Area w/ Restrooms

- + Existing Dock (fishing, canoe launch)
- Future Dock (exact siting/size may vary)
- ▲ Interpretive Station/Gateway elements with maps & user education/safety rules
- Day Use Area Expansion Reserve
- ADA Public Use Lodge/Cabins, or other "Gateway Lakeside Facility"
- ⊕ Scenic View Areas

"Gem" Forest Preserve
Maintain natural forest condition with retention of vegetation.

Future Park Reserve
Potential community play-park area, to be installed during build-out of Powder Reserve Development.

Fenced Off-Leash Dog Park
Phased implementation into existing cleared area north of the railroad, with expansion/shift after ARRC realignment.

Potential Parking Site
Potential area for phased development of parking, if and when existing lots become saturated. Construct only as needed where needed. Impacted roads must be upgraded to handle park traffic, and park oversight be expanded to deter illegal activities.

Legend

- Uplands
- Class A Wetlands
- 10 foot Elevation Contours
- Park Boundary

Figure 7. Beach Lake Park Conceptual Development Plan

