

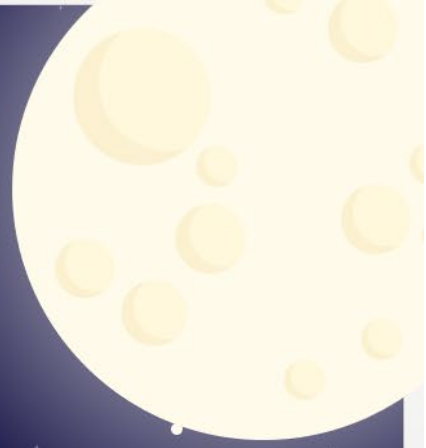


# Consolidated Service Areas: When a City isn't a City

Mike Edgington  
Nerdwood AK



CITY  
NERD  
NITE



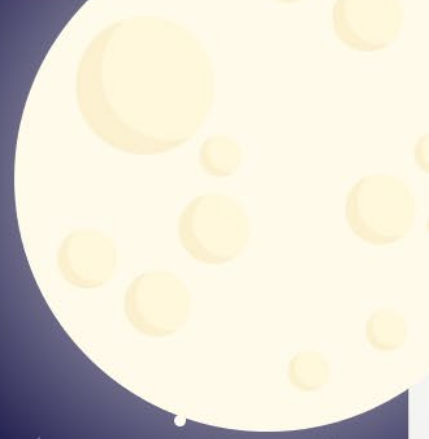


MUNI

~~CITY~~

NERD

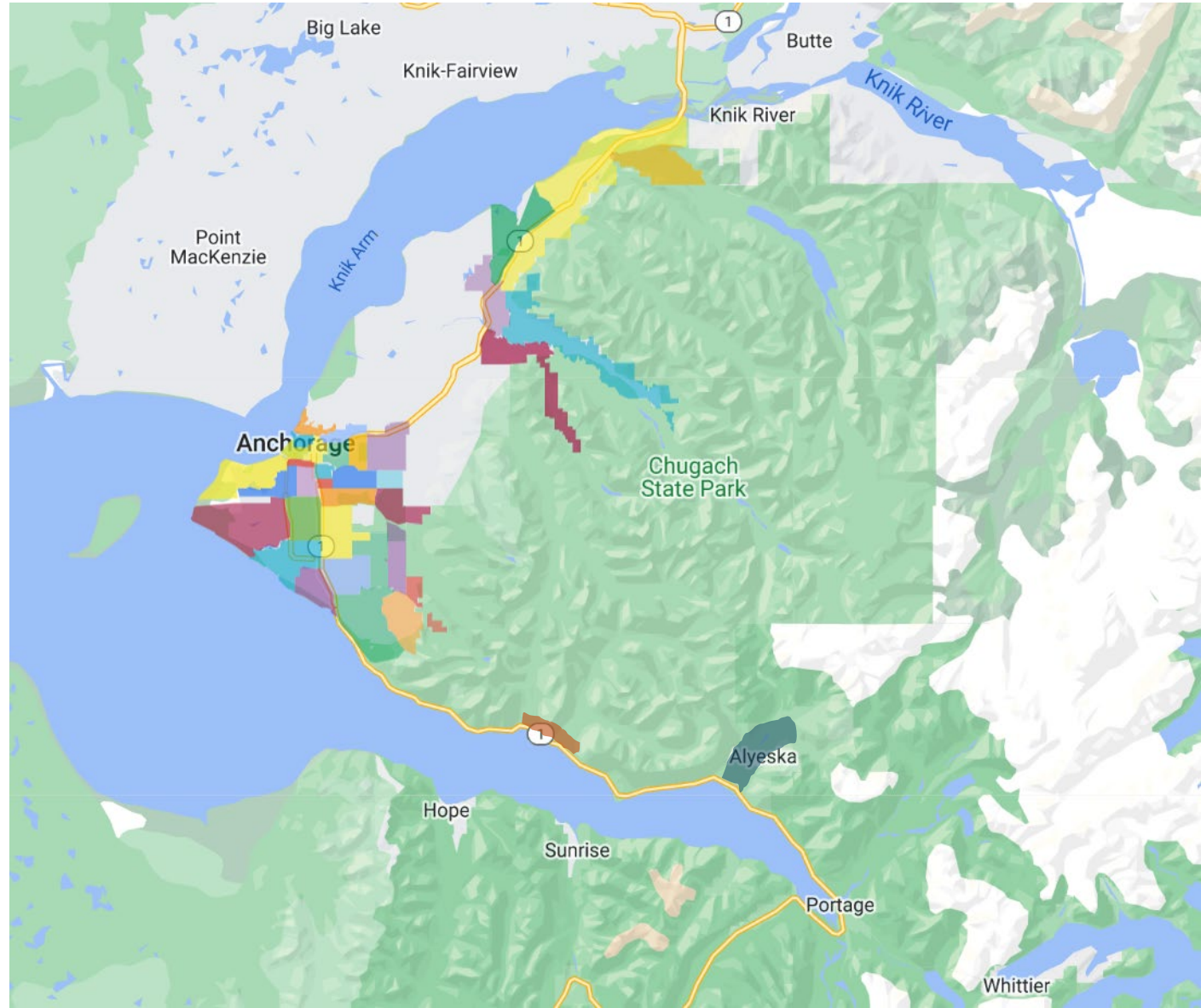
NITE





**WHAT HAS THE MUNI EVER DONE FOR US?**

Borough,  
city,  
cities or  
neighborhoods?



Based on Google My Maps by [greatalaskanhomes.com](http://greatalaskanhomes.com)



# Local services in a unified Municipality?

## Local funding options

### Assessment District – services to “property”

- “Special assessment” paid by beneficiaries in proportion to benefit
- Vote by all property owners, proportion to benefit
- Ideally, services to “property”
- e.g. Utilities, Downtown Business District

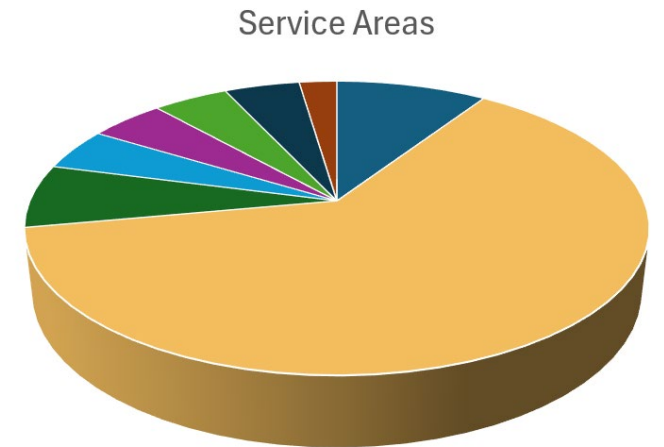
### Service Areas – services to “community”

- Property tax levy
- Services provided strictly within that service area
- New services or “higher level” than areawide
- Vote by registered voters
- May have a Board, either appointed or elected

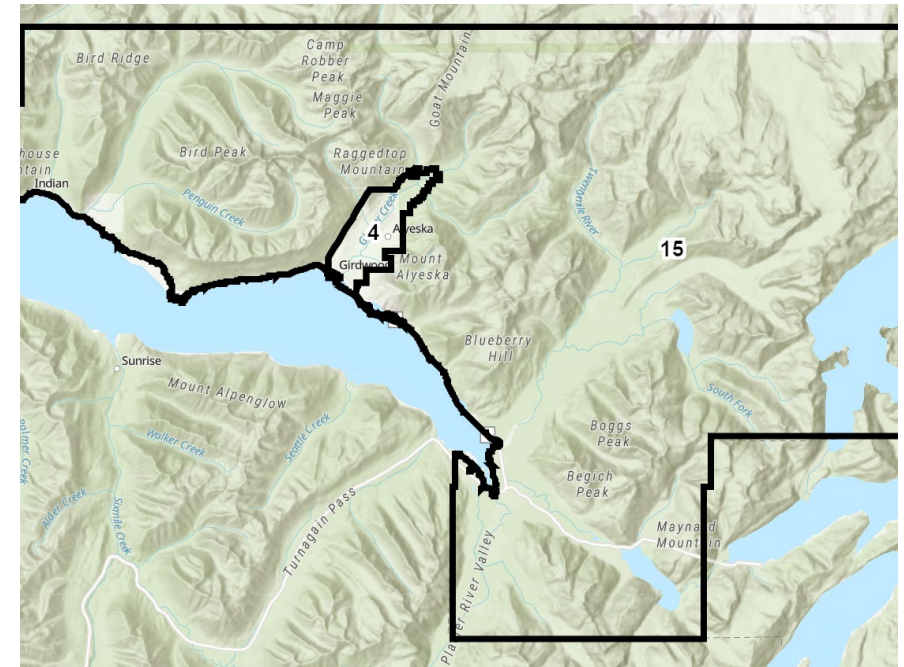
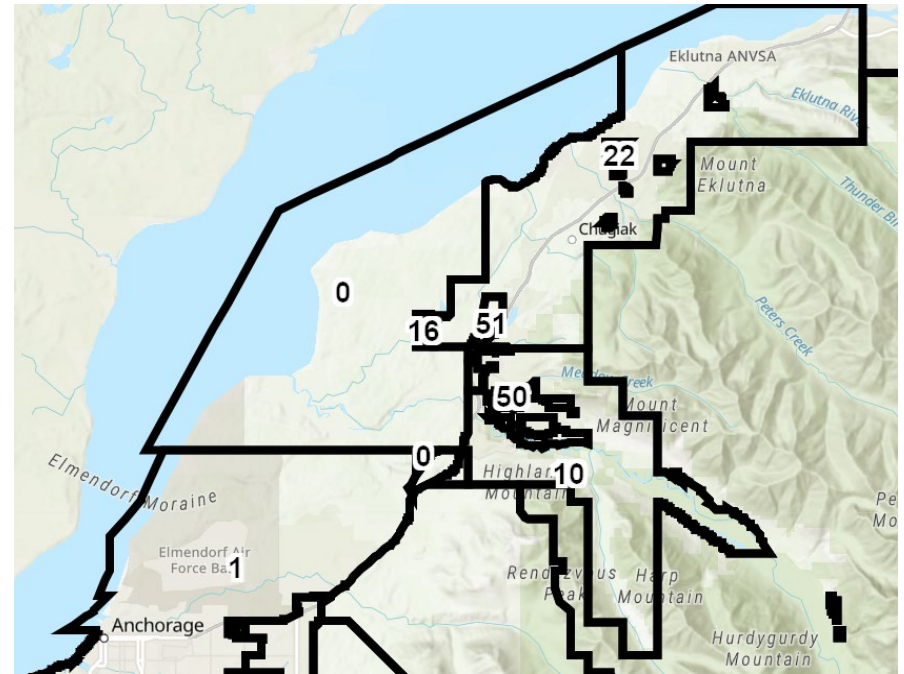
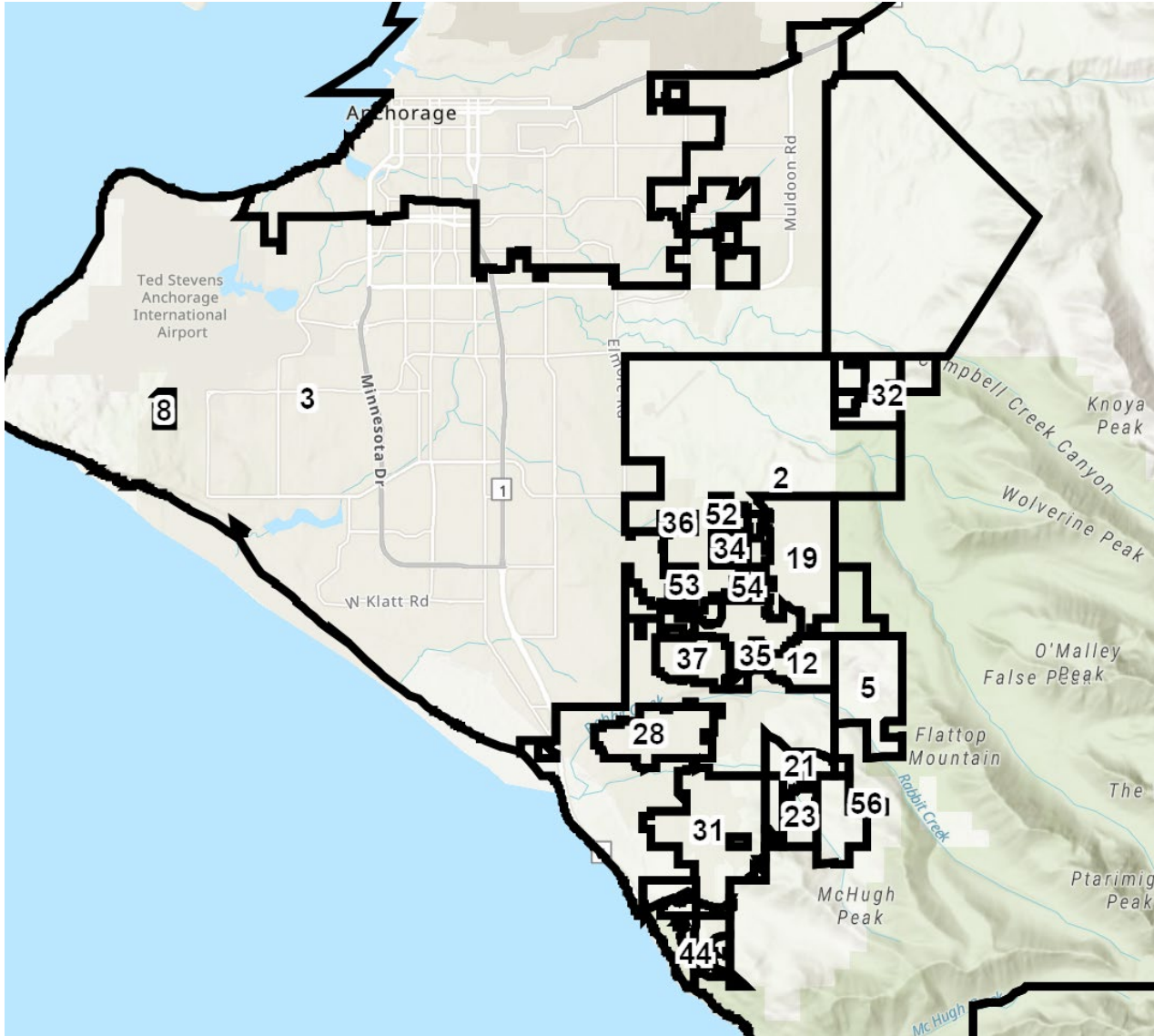
# MOA Service Areas

## MOA Code lists 71 Service Areas

- 43 active, 28 expired or repealed
- 4 are “historic”, pre-MOA cities or old bonds
- 27 for roads service only
  - 19 Limited
  - 3 Rural
  - 5 other roads and/or drainage
- 3 fire service
- 2 police service
- 2 parks & rec
- 2 solid waste services
- 2 special purpose (street lights, building safety)
- 1 consolidated local services (6-7 services)



# 46 Tax Districts







# Government Cheese?

---

« Comment voulez-vous gouverner un pays qui a 246 variétés de fromage? »

“How can you govern a country that has 246 varieties of cheese?”

- Charles de Gaulle

# Girdwood – a consolidated service area

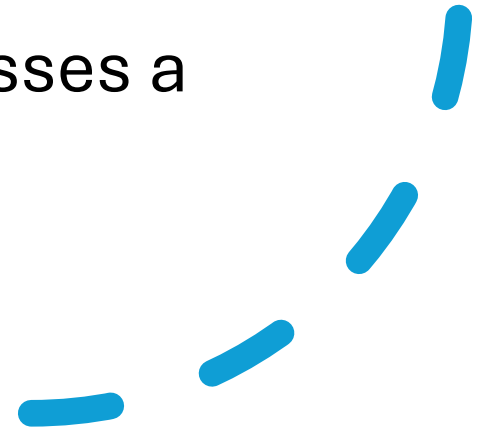
## Girdwood Valley Service Area

- Roads and Drainage
- Parks and Recreation
- Fire Service
- Cemetery Service
  - since 2015 – future?
- Police Service
  - since 2016
- Housing and Economic Stability
  - since 2023
- Solid Waste Service (???)
- Elected Board of Supervisors



# What works well?

- Closer connection to services
  - Very high local engagement
  - 15-20% of population at meetings
    - Equivalent to 50,000 to 60,000 at Assembly!
- Local staff
- Right sizing of local services
  - so far at lower cost
  - new services
- Roads and Drainage encompasses a single watershed



# Challenges

- Political
  - Locally elected officials advise
  - “distant” elected officials decide
  - Amplified by high local engagement
- Structural
  - Anchorage Bowl has a vast shadow
- Financial
  - Non-property taxes
  - Access to capital
    - Local Bonds always\* fail



# Next steps?

- Finances
  - Revenue by geography
  - MOA capital reserves
- Political
  - The -exit movement
  - Subsidiarity
    - Issues are dealt with at the most local level consistent with their resolution
- Where else?

