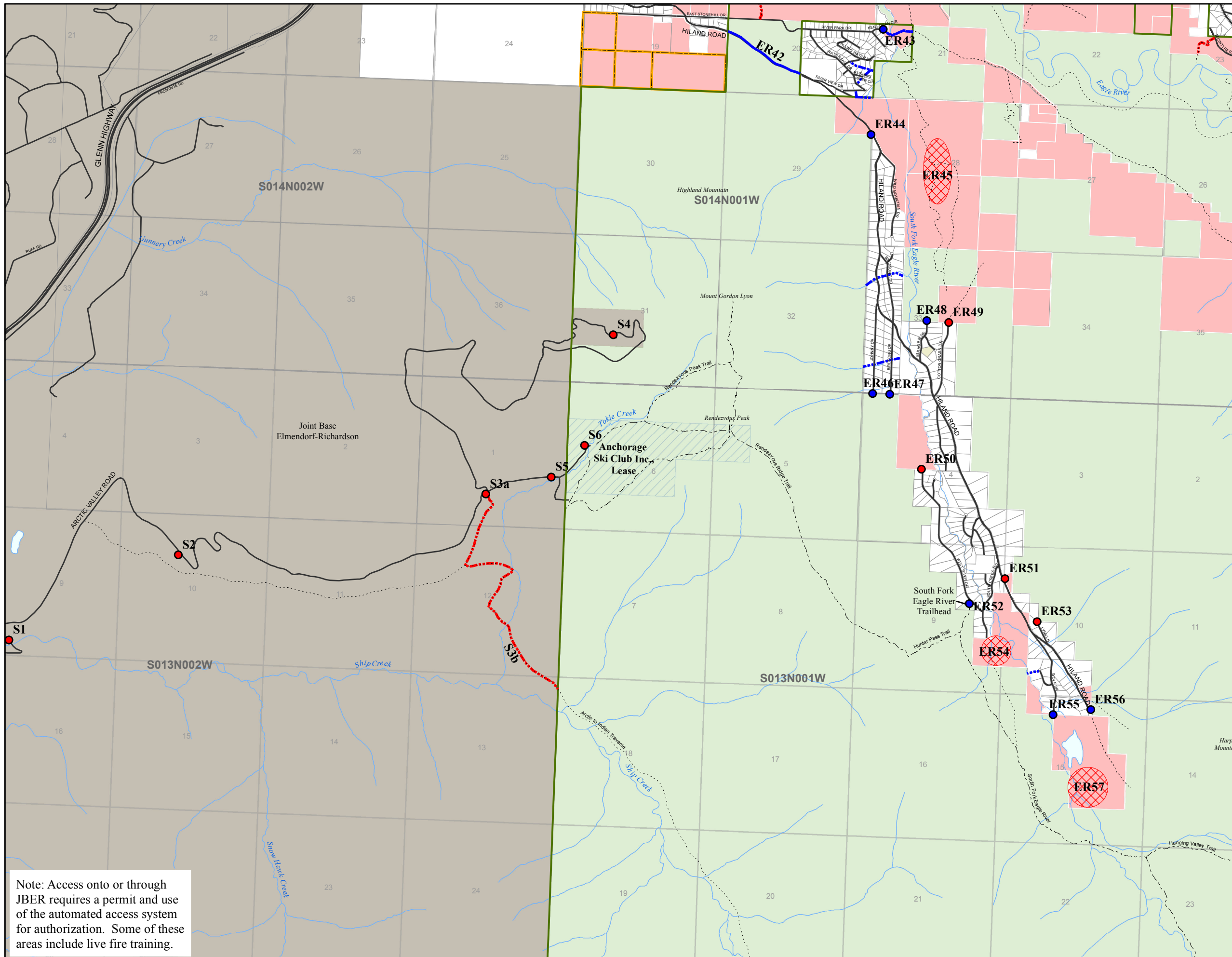


# CHUGACH STATE PARK

## Access Plan Eagle River & Ship Creek Units

### Map 6.5



**Access Point**

- Secured
- Unsecured

**Pedestrian Access Corridor**

- Secured
- Unsecured

**Road Access Corridor**

- Secured
- Unsecured

- ▨ Area of High Suitability
- ▨ Parcels of Opportunity
- ▭ CSP Legal Boundary (AS41.21.121)
- ▭ CSP Management Area
- ▭ NALA Land
- ▭ MOA HLB Land
- ▭ State Land
- ▭ Private Parcels
- ▭ MOA Park Land
- ▭ Military Land
- Trailway
- Route or Trail Outside of CSP
- Road

PZC DISCUSSION MAP FEB 2013



Note: Access onto or through JBER requires a permit and use of the automated access system for authorization. Some of these areas include live fire training.

This map is for graphic representation only and is intended to be used only for planning purposes. The Chugach State Park boundary and access as depicted on this map should not be construed as legally definitive boundaries and locations. Land status is generalized and the park boundary has not been surveyed. Source documents remain the official record.

Not all access represented on this map is reserved public access; many routes depicted herein are on private land.

Projected Coordinate System:  
NAD 1983, UTM Zone 6 North

